

2017 UNDERGRADUATE PSYCHOLOGY

Geelong | Melbourne | Warrnambool | Cloud Campus



PSYCHOLOGY AT DEAKIN

Psychology is a scientific discipline that studies the mind and its processes, behaviour and mental states. There is increasing emphasis on mental health in the modern world and employment prospects in the area continue to grow accordingly.

Studying psychology as an undergraduate enables you to take two distinct paths. You can go on to further study in pursuit of full registration as a psychologist or you can go straight into employment options that don't require registration as a psychologist.

Qualified psychologists can work in a variety of settings, including clinical, forensic, organisational, educational, health, rehabilitation, sport and many other specialist areas. The contexts in which you can work are just as varied, including private practice, hospitals, business organisations, schools, universities, government agencies, community sport and various research groups.

You don't have to go on to full registration to enjoy the benefits of studying psychology. Your understanding of human behaviour and the skills that you develop throughout your course will open up opportunities in industries such as community services, counselling, education, health services and protective services.

Excited about a career in psychology?
Keep reading to start your journey at Deakin.



IN THIS GUIDE

- 2 Why Deakin?
- 4 Getting into Deakin
- 6 Courses
- 16 Courses to careers
- 17 Find out more

DEAKIN HALLMARKS

Deakin Hallmarks are awards that recognise students' outstanding achievement of Graduate Learning Outcomes, which are highly valued in the workplace.



Communication



Digital literacy



Teamwork



Critical thinking



Problem solving



Self-management



Global citizenship

WHY DEAKIN?

Learn more about the science of human behaviour at Deakin – the largest School of Psychology in Australia.

Our students are work-ready

Work readiness is a key feature of psychology at Deakin. To give you every success upon graduation, you will undertake relevant work experience in psychology and participate in transition-to-work activities, such as developing a professional portfolio, writing a résumé and honing your interview skills.

Valuable links with industry

Deakin's partnerships with industry involve collaborative activities with government agencies, public and private organisations, hospitals and other universities. These partnerships ensure that our courses are relevant to industry and workforce needs.

Some partnership organisations include:

- FBG Group
- National Australia Bank
- People Measures
- PeopleScape
- Richmond Football Club.

Peer mentoring

The Faculty of Health offers a Peer Mentoring Program as part of its commitment to providing new students with the best possible transition into university life. By joining the program, first-year students receive support and guidance from more senior students in their course, helping them to become familiar with the support services and facilities available, while gaining useful tips about studying at Deakin.

deakin.edu.au/health/peer-mentoring

Innovative learning methods

The School of Psychology is exploring a new and innovative way of learning, such as 'flipping the classroom.' This enables you to listen to classes at home and come in to university for seminars, giving you even more flexibility in the way you learn.

Fast-track your degree

Deakin splits the year into three trimesters, and undergraduate psychology is taught across each of them. By taking advantage of the subjects offered in Trimester 3, you can fast-track your studies to complete a three-year psychology degree in just two years of full-time study, meaning you can start your career or postgraduate studies in psychology sooner.



YOUR DIGITAL LEARNING TOOLS

DeakinSync is a personal online hub giving Deakin students, staff and alumni easy access to relevant University resources, customised to their specific needs. You can access everything from unit sites to enrolment details, study tools to your calendar, as well as IBM Watson – a question and answer tool.

Visit deakin.edu.au/deakinsync or ibmwatson.deakin.edu.au for more information.

IBM Watson is a trademark of International Business Machines Corporation, registered in many jurisdictions worldwide.





OUR COURSES ARE PROFESSIONALLY ACCREDITED

All of the psychology courses offered at Deakin meet the requirements of the Psychology Board of Australia and the Australian Psychological Society (APS), translating into excellent job and career opportunities for Deakin psychology graduates.



‘What sets Deakin students apart for us is their level of preparedness to enter the workforce and their alignment to Deakin’s core competency skill sets. They appear to be well versed and knowledgeable and demonstrate strong problem-solving skills. In addition, we have found they demonstrate excellent work ethic and have proven to be valuable members of our trainee internship team and overall staff’

NITHA PRAKASH

Deakin psychology advisory board member

Study where you want to live

Deakin offers psychology courses across all campuses – the Melbourne Burwood Campus, the Geelong Waterfront Campus, the Geelong Warrnambool Campus, the Warrnambool Campus and the Cloud Campus – enabling you to study where it suits you.

You can also study the Bachelor of Psychological Science in a supported community environment – at Deakin’s learning centres in Craigieburn, Dandenong and Werribee.

Diverse career outcomes

Deakin’s psychology graduates embark on varied careers, and have gone on to work with organisations that include:

- Alzheimer’s Australia
- Australian Unity
- Barwon Health
- Bellarine Psychology
- Box Hill Hospital
- Cancer Council
- Centre for Behavioural Research in Cancer
- Centrelink
- Corrections Victoria
- CRS Australia
- Department of Education
- Department of Human Services
- Department of Justice
- Geelong Football Club
- Inner East Mental Health Services Association
- Monash IVF
- Olympic Park Sports Medicine Centre
- People @ Work
- Private schools
- Specialised children’s services
- Youth Substance Abuse Service.

deakin.edu.au/psychology/work-in-psychology/careers

GETTING INTO DEAKIN

Life doesn't always follow a straight line – and your path to Deakin doesn't have to either.



Finishing Year 12?

You can apply for most of Deakin's undergraduate courses commencing in Trimester 1 (March) through the Victorian Tertiary Admissions Centre (VTAC) at vtac.edu.au. For courses commencing in Trimester 2 (July) or Trimester 3 (November), apply directly to Deakin at deakin.edu.au/apply.

Finished Year 12 a few years ago?

If you're returning to study after a break, you can apply for most of Deakin's undergraduate courses (bachelor's degrees) commencing in Trimester 1 (March) through the Victorian Tertiary Admissions Centre (VTAC), or you may be able to apply directly to Deakin. For courses beginning in Trimester 2 (July) or Trimester 3 (November), apply directly to Deakin at deakin.edu.au/apply.

All Faculty of Health courses require a Special Tertiary Admissions Test Multiple Choice (STAT MC) where the applicant has not completed Year 12 (or equivalent) or any tertiary study (minimum Certificate IV) within the last 10 years (from commencement date of the course applied for).

What are pathways?

Pathways provide alternative options for entry into university if you currently do not meet the requirements. You can choose pathways through TAFE, other tertiary institutions or private providers, through the workforce or even through other Deakin courses or campuses.

Pathways through Deakin

You can take many different pathways through Deakin to get into your dream course, including transferring between Deakin courses or campuses, or undertaking a single unit of study, which can be used as credit towards a degree.

Pathways through Deakin learning centres

Deakin has learning centres in Dandenong, Craigieburn and Werribee, giving students greater access to higher education by providing the opportunity to study close to home. You can also study some Deakin courses at a number of TAFE partners in regional locations.

Pathways through Deakin College

Deakin College offers an excellent pathway to Deakin for students who do not meet the admission requirements. The first year of a Deakin College diploma is equivalent to the first year of the relevant Deakin degree. Upon satisfactory completion of a Deakin College diploma, and subject to meeting University entrance criteria, domestic graduates are eligible to apply for a Commonwealth Supported Place in the second year of the relevant Deakin undergraduate degree.

Deakin College is located at Deakin's Melbourne Burwood Campus, Geelong Waterfront Campus and Geelong Waurn Ponds Campus, giving you access to Deakin's facilities and services and allowing you to get involved in uni life while at Deakin College.

Pathways through TAFE

If you undertake an eligible TAFE course in a field similar to the Deakin course of your choice, you may be able to gain a guaranteed place at Deakin and credit for prior learning towards your Deakin degree.

Complete a guaranteed entry pathway

Guaranteed entry pathways enable you to progress seamlessly from selected TAFE courses to Deakin degrees. Deakin offers guaranteed entry pathways from a number of TAFE partners to university in a growing range of disciplines.

If you are taking a guaranteed entry pathway, as long as your study performance meets the required standard, you will be guaranteed a place at Deakin following successful completion of your TAFE course and benefit from up to 18 months' credit towards your Deakin degree.

Currently, guaranteed entry pathways are available at Bendigo TAFE, Box Hill Institute, Chisholm, The Gordon, Kangan Institute, Melbourne Polytechnic, South West Institute of TAFE and TAFE NSW – Riverina Institute. For the most up-to-date list of guaranteed pathways, visit deakin.edu.au/pathways.

Complete a relevant TAFE course

If you undertake an eligible TAFE or Registered Training Organisation (RTO) course in a field similar to the Deakin course of your choice, you may gain credit towards your Deakin degree. A wide range of courses lead to credit transfer and recognition, and all TAFE qualifications are considered for application to Deakin.

Pathways through other educational institutions

If you're currently studying at another university and wish to transfer to Deakin to finish your degree, you can apply for credit for prior learning. All university and private education provider qualifications are considered for application, even if the qualification is unrelated to what you want to study at Deakin.

Pathways through the workforce

You may be able to gain entry to Deakin, or credit towards a Deakin course, based on your work experience or prior industry training.



For more information on getting into Deakin, visit deakin.edu.au/pathways.



FIND OUT WHAT CREDIT YOU'RE ELIGIBLE FOR

Your previous studies and experience can lead to credit towards your chosen course. This not only saves you time and money, but also increases your educational options. To find out what credit you may be eligible for, search our Credit for Prior Learning database at deakin.edu.au/courses/credit/search.php.



'I must say that I have really enjoyed my experience at Deakin and, having been both a student and employee at Deakin, I feel like I have quite a unique perspective. At Deakin we really care about our students and this shows with Deakin achieving the highest level of overall student satisfaction amongst Victorian universities for the last six years.'

DR JACLYN BROADBENT

Psychology senior lecturer

COURSES


Course duration in years **3**
 Melbourne Burwood Campus **B**
 Geelong Waterfront Campus **WF**
 Geelong Warrnambool Campus **WP**
 Warrnambool Campus **WB**
 Cloud Campus **C**

Learning centre – Craigieburn **CR**
 Learning centre – Dandenong **DA**
 Learning centre – Werribee **WE**

	Campus or learning centre	Trimester intake options	Duration	Fees [#]	Page
<i>Bachelor of ...</i>					
Psychological Science H344	B WP WB C CR DA WE	T1, T2*, T3*	3	\$7066	8
Psychology (Honours) H345	B WP WB C	T1, T2*, T3*	4	\$6976	9
Arts (Psychology) A301	B WP WB C	T1, T2, T3	3	\$6452	10
Health Sciences H300 <i>With a major sequence in psychology</i>	B WP WB	T1, T2, T3*	3	\$8371	11
Combined courses					
<i>Bachelor of ... / Bachelor of ...</i>					
Criminology/Psychological Science D390	B WP C	T1, T2, T3	4	\$6762	12
Nursing/Psychological Science D387	B WF WB	T1	4	\$6717	14
Health Sciences/Arts D391	B	T1, T2, T3	4	\$7735	15
Related course					
Bachelor of Management M325 <i>With a major sequence in organisational psychology</i>	B WF C	T1, T2	3	\$9722	15

2016 indicative Commonwealth Supported Place (CSP) fee. Fees quoted are for Australian domestic students and are based on a typical enrolment in one year of full-time study. They should be used as a guide only and are subject to change.

* Not available at Warrnambool Campus.

 Please refer to deakin.edu.au/courses for the most up-to-date information on courses.

'One of my favourite units in psychology has been psychopathology, which taught me concepts of mental disorders, their clinical presentations, characteristics and understanding the diagnostic criteria. An interesting assignment involved the analysis of a film that highlighted a mental disorder (schizophrenia).'

DINISHA PARMAR

Psychology (honours) student





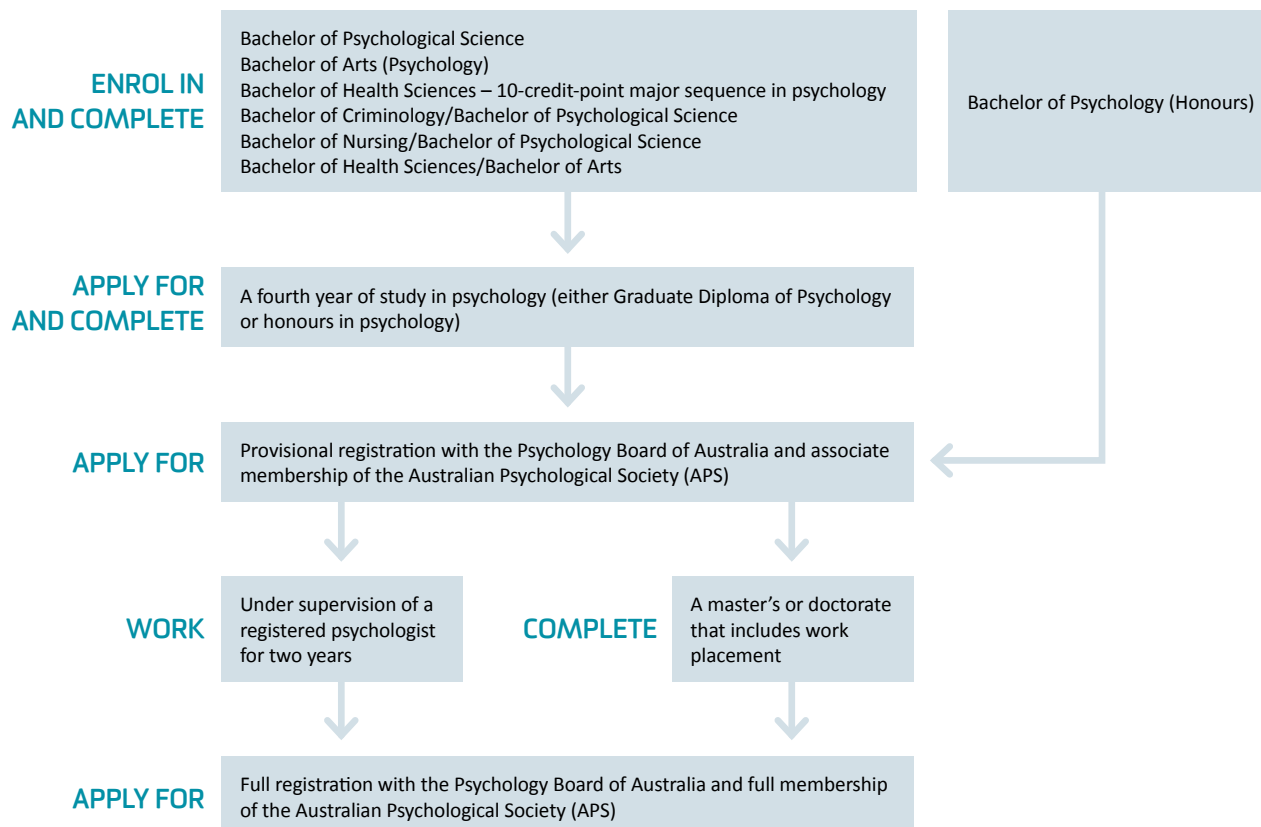
PATHWAYS TO FULL REGISTRATION

To obtain registration as a provisional psychologist, you need to complete four years of academic study in psychology that is recognised by the Psychology Board of Australia. This usually consists of an approved three-year undergraduate psychology sequence followed by an approved fourth year of study. You may then apply for provisional registration with the Psychology Board of Australia and associate membership of the Australian Psychological Society (APS).

To gain full registration, provisional psychologists must then complete either two years of supervised practice or a minimum two years of further study (with supervised practice completed outside the degree). It is at this stage that you can specialise in a particular area of psychology that appeals to your interests and career aspirations.



CHOOSE YOUR CAREER PATHWAY



COURSES

BACHELOR OF PSYCHOLOGICAL SCIENCE

B WP WB C CR DA WE

DEAKIN CODE	DURATION	2016 CLEARLY-IN ATAR
H344	3	<div><div>B</div>61.10</div> <div><div>WP</div>57.25</div> <div><div>WB</div>Unpublished~</div> <div><div>C</div>Unpublished~</div>
YEAR 12 PREREQUISITES	NON-YEAR 12 REQUIREMENTS	
VCE units 3 and 4 – a study score of at least 30 in English (EAL) or 25 in English other than EAL.	VTAC Personal Statement. Some applicants only: STAT Multiple Choice.	
STUDY AT A LEARNING CENTRE		
Minimum clearly-in ATAR 50.00. Year 12s and non-Year 12s must complete an application form and personal statement. Applications are made directly to Deakin.		

Psychology is concerned with understanding human personality, behaviour, emotion, underlying mental processes and the factors that lead people to differ in the way they think and behave. Offering an integrated approach to psychology, this course covers areas including behavioural and clinical neuroscience, child and adolescent psychology, relationships and the psychology of groups, personality, cognitive psychology, forensic psychology and psychopathology. This course also gives you the opportunity to develop your counselling skills through a suite of elective units.

Following successful completion of this degree, graduates may apply for a fourth year of psychology study (including Deakin's Graduate Diploma of Psychology or honours in psychology).

Professional recognition

Deakin's Bachelor of Psychological Science is recognised for registration purposes by the Psychology Board of Australia, accredited by the Australian Psychology Accreditation Council (APAC) and enables you to undertake additional study in pursuit of professional registration.

Registration

See pathways to full registration information on page 7.

Career opportunities

Many psychology graduates work in schools and education settings, or in a variety of businesses, delivering employee assistance programs or training. Increasingly, opportunities are available in commerce and in areas such as human resources, business and management.

Work-integrated learning

You have the opportunity to consolidate your employment prospects and knowledge by electing to undertake a psychology internship unit in your second year of study.

Course structure

24 credit points – at least 13 psychology units.

~ Unpublished means that the course is available at that campus, but the clearly-in ATAR isn't available.

'Teaching is genuinely valued at Deakin. Our student-centred focus means staying on the cutting edge of teaching practice, as student needs and society change. That's always exciting.'

CHRISTIAN HYDE

Psychology senior lecturer





Course duration in years	3	Learning centre – Craigieburn	CR
Melbourne Burwood Campus	B	Learning centre – Dandenong	DA
Geelong Waterfront Campus	WF	Learning centre – Werribee	WE
Geelong Waurn Ponds Campus	WP		
Warrnambool Campus	WB		
Cloud Campus	C		



BACHELOR OF PSYCHOLOGY (HONOURS)

B WP WB C

DEAKIN CODE	DURATION	2016 CLEARLY-IN ATAR
H345	4	<p>B 80.75</p> <p>WP 73.84</p> <p>WB Unpublished~</p> <p>C Unpublished~</p>
YEAR 12 PREREQUISITES		NON-YEAR 12 REQUIREMENTS
VCE units 3 and 4 – a study score of at least 30 in English (EAL) or 25 in English other than EAL.		VTAC Personal Statement. Some applicants only: STAT Multiple Choice.

This four-year course differs from the Bachelor of Psychological Science or Bachelor of Arts (Psychology) by providing selected students with the opportunity to complete honours in psychology as part of the final year of this degree. Selection into honours is subject to academic achievement in the first three years of study.

Professional recognition

Deakin's Bachelor of Psychology (Honours) is recognised for registration purposes by the Psychology Board of Australia and is accredited by the Australian Psychology Accreditation Council (APAC).

Registration

See pathways to full registration information on page 7.

Career opportunities

After successfully completing the Bachelor of Psychology (Honours) you are well prepared for employment in a wide range of areas relevant to human wellbeing, such as youth work, careers counselling, work/life counselling, developmental psychology, research psychology or mental health rehabilitation.

Depending on your chosen area and level of further study, you may work in a variety of settings, including specialist areas of psychology practice, such as clinical, forensic, organisational, educational, health, sport and many others. The contexts in which you work may include hospitals, business organisations, schools, universities, government agencies, community sporting groups, various research groups or in private practice.

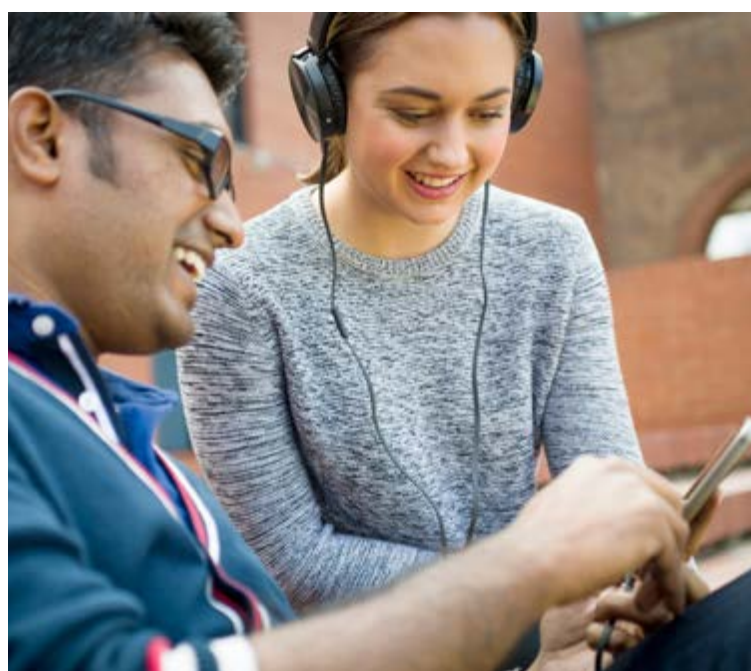
Work-integrated learning


You have the opportunity to consolidate your employment prospects and knowledge by electing to undertake a psychology internship unit in your second year of study.

Course structure

32 credit points – 21 credit points of psychology units plus elective units.

~ Unpublished means that the course is available at that campus, but the clearly-in ATAR isn't available.



 [deakin.edu.au/study-at-deakin/
find-a-course/psychology](https://deakin.edu.au/study-at-deakin/find-a-course/psychology)

COURSES

BACHELOR OF ARTS (PSYCHOLOGY) B WP WB C

DEAKIN CODE	DURATION	2016 CLEARLY-IN ATAR
A301	3	B 60.20 WP 58.10 WB Unpublished~ C Unpublished~
YEAR 12 PREREQUISITES		NON-YEAR 12 REQUIREMENTS
VCE units 3 and 4 – a study score of at least 25 in English (EAL) or 20 in English other than EAL.		Educational history including GPA.

The Bachelor of Arts (Psychology) combines research-based and professional studies in psychology with broad studies in the liberal and creative arts. It provides you with opportunities to develop skills of critical and systematic thinking; an imaginative understanding and appreciation of the theory and practice of the social sciences, the humanities or the arts; and enhanced cultural sensitivity and understanding through genuine reciprocity of values.

Following successful completion of this degree, graduates may apply for a fourth year of psychology study (including Deakin's Graduate Diploma of Psychology or honours in psychology).

Professional recognition

Deakin's Bachelor of Arts (Psychology) with a 10-credit-point major sequence in psychology is accredited by the Australian Psychology Accreditation Council (APAC) and enables you to undertake additional study in pursuit of professional registration.

Registration

See pathways to full registration information on page 7.

Career opportunities

You can enter a variety of employment fields, including creative-arts industries, human resources, education, law enforcement, media and communication, politics and government organisations, historical and cultural heritage organisations, and social-service agencies.

Course structure

24 credit points – 10 psychology units, 10 arts units, including an approved arts major sequence of at least 8 credit points, and four elective units.

Major sequences

- Animation B
- Anthropology B WP C
- Arabic B WP C
- Australian studies B WP WB C
- Children's literature B WP C
- Chinese B WP
- Criminology B WP C
- Dance B
- Drama B
- Education^ B C
- Film and television B
- Gender studies (minor only) B WP C
- Geography (minor only) B
- History B WP C
- Indonesian B WP C
- International relations B WP C
- Journalism B WP C
- Language and culture studies B WP C*
- Literary studies B WP C
- Media studies B WP C
- Middle East studies B WP C
- Motion capture B
- Philosophy B WP C
- Photography B WF
- Politics and policy studies B WP C
- Professional and creative writing B WP C
- Public relations B WP C
- Sociology B WP C
- Spanish B WP C
- Sport and society (minor only) B WP C
- Studies of religions B WP C
- Sustainability and society (minor only) B
- Visual arts B WF
- Visual communication design B WF

^ A sequence of four education units in levels 2 and 3.

* A full major sequence in Chinese is not available at this campus.

~ Unpublished means that the course is available at that campus, but the clearly-in ATAR isn't available.



[deakin.edu.au/study-at-deakin/
find-a-course/psychology](https://deakin.edu.au/study-at-deakin/find-a-course/psychology)

BACHELOR OF HEALTH SCIENCES – MAJOR SEQUENCE IN PSYCHOLOGY **B WP WB**

DEAKIN CODE	DURATION	2016 CLEARLY-IN ATAR
H300	3	B 60.40 WP 55.00 WB Unpublished~
YEAR 12 PREREQUISITES		NON-YEAR 12 REQUIREMENTS
VCE units 3 and 4 – a study score of at least 30 in English (EAL) or 25 in English other than EAL.		VTAC Personal Statement. Some applicants only: STAT Multiple Choice.

This flexible degree is an excellent option for those looking to discover their passion in the health sector. It equips you with the specialist knowledge and transferable skills that will make you highly sought-after for employment in a variety of valuable settings within the health sector.

Professional recognition

Deakin's Bachelor of Health Sciences with a 10-credit-point major sequence in psychology is accredited by the Australian Psychology Accreditation Council (APAC) and enables you to undertake additional study in pursuit of professional registration.

Registration

See pathways to full registration information on page 7.

Career opportunities

Depending on the major sequences you take and your choice of electives, you could be qualified to work in areas such as health promotion, health education, community health, family and community support, health marketing, health and sport public relations, health policy development, nutrition and research in health areas.

Work-integrated learning

Enhance your employment prospects and consolidate your knowledge and skills through an industry placement unit in the final year of your course.

Course structure

24 credit points – at least 16 credit points from the Faculty of Health, including HBS107 Understanding Health and HBS108 Health Information and Data, plus at least two major sequences chosen from the list below.

Major sequences

- Environmental health **B WP**
- Exercise science **B WP C**
- Family, society and health **B C**
- Food studies **B**
- Health and sustainability **B**
- Health promotion **B WP WB C**
- Medical biotechnology **B WP**
- Nutrition **B WP WB**
- People, society and disability **B C**
- Physical activity and health **B WP WB**
- Psychology **B WP WB C**
- Sport coaching **B**

Psychology major sequences

6 credit points

The 6-credit-point major sequence is designed to complement other studies within the Bachelor of Health Sciences. It does not meet the requirements for entry into fourth-year studies in psychology, nor does it lead to a professional qualification in psychology.

10 credit points

If you wish to pursue registration as a psychologist you can meet your undergraduate study requirements by taking the 10-credit-point major sequence. Following successful completion of this major sequence, you may be eligible to apply for a fourth year of study in psychology (either honours in psychology or a Graduate Diploma of Psychology).

~ Unpublished means that the course is available at that campus, but the clearly-in ATAR isn't available.

Deakin's Cloud Campus allows you to study in your own time and in any location.



COURSES

Course duration in years **3**
 Melbourne Burwood Campus **B**
 Geelong Waterfront Campus **WF**
 Geelong Waurn Ponds Campus **WP**
 Warrnambool Campus **WB**
 Cloud Campus **C**

COMBINED COURSES

BACHELOR OF CRIMINOLOGY/ BACHELOR OF PSYCHOLOGICAL SCIENCE

B WP C

DEAKIN CODE	DURATION	2016 CLEARLY-IN ATAR
D390	4	B 78.15 WP 60.00 C Unpublished~
YEAR 12 PREREQUISITES		NON-YEAR 12 REQUIREMENTS
VCE units 3 and 4 – a study score of at least 30 in English (EAL) or 25 in English other than EAL.		Educational history including GPA, and VTAC Personal Statement. Some applicants only: STAT Multiple Choice.

Deakin's Bachelor of Criminology/Bachelor of Psychological Science provides an accredited undergraduate sequence in psychology and includes complementary studies in individual and group counselling, health and behavioural change.

Combining psychology with criminology provides you with broad theoretical and applied knowledge and skills concerning the meaning of crime; the forms, causes and consequences of crime; and the different institutions and processes involved in preventing and controlling crime.

A Criminology Practicum in your final year of study brings the professions to the classroom (including via online learning) with practitioner-driven seminars, activities bridging theory and practice, and the development of an e-portfolio that can be used for employment or career development.

Professional recognition

This course is recognised for registration purposes by the Psychology Board of Australia, accredited by the Australian Psychology Accreditation Council (APAC) and enables you to undertake additional study in pursuit of professional registration.

~ Unpublished means that the course is available at that campus, but the clearly-in ATAR isn't available.

 [deakin.edu.au/study-at-deakin/
find-a-course/psychology](https://deakin.edu.au/study-at-deakin/find-a-course/psychology)



GRADUATE WITH TWO DEGREES

Combined courses allow you to complete two courses in as little as four or five years, which is quicker than completing one degree followed by the other. They are also structured in such a way that you will normally study four units (subjects) per trimester, just the same as you would if you were completing a full-time single degree.



'I love how something so theoretically based is taught in such a practical way at Deakin. There are so many different ways we are taught the material, from case studies and case analysis, and coding people's behaviour in seminars, to having panel discussions with psychologists and the opportunity to ask them about their experiences in their field.'

ASHLYN VAN DEN BROEK

Psychology (honours) student

RESEARCH THAT MAKES A DIFFERENCE

Academic research is a fascinating pursuit that has real-world applications. Working in Deakin's School of Psychology, Associate Professor Peter Miller researches alcohol-related violence in the night-time economy. He is the lead investigator of the project POINTED, a national study into nightlife, pre-drinking, drug use and energy-drink use. It is the largest nightlife project conducted to date.

Associate Professor Miller was also the lead investigator of the Dealing with Alcohol and the Night Time Economy (DANTE) study. The DANTE study focused on licensed premises in Geelong and Newcastle and investigates innovative policing and community-based interventions into alcohol-related violence, such as ID scanners, safe taxi ranks and buses, reduced trading hours and drinks restrictions. Both projects were funded by the National Drug Law Enforcement Research Fund (NDLERF).

COURSES

BACHELOR OF NURSING/BACHELOR OF PSYCHOLOGICAL SCIENCE B WF WB

DEAKIN CODE	DURATION	2016 CLEARLY-IN ATAR
D387	4	B 77.05 WF 65.80 WB Unpublished~
YEAR 12 PREREQUISITES	NON-YEAR 12 REQUIREMENTS	
VCE units 3 and 4 – a study score of at least 30 in English (EAL) or 25 in English other than EAL.	VTAC Personal Statement. Some applicants only: STAT Multiple Choice.^	

This course is well suited to those interested in the growing field of mental health nursing. It gives you a strong understanding of research methods in psychology, human behaviour and mental processes, as well as providing you with the knowledge and skills to comprehensively care for patients.

The Clinical Simulation Centre provides facilities and equipment designed to develop practical skills, which are further enhanced throughout clinical work placements. A wide range of units provide the scientific knowledge base for mental health practice, such as psychology as a behavioural science, statistics, psychological testing and measurement, mental health promotion and research.

Professional recognition

This course meets the registration requirements for registered nurse of the Nursing and Midwifery Board of Australia (NMBA), as well as providing you with a three-year sequence in psychology that is recognised by the Psychology Board of Australia.

Career opportunities

Graduates work in areas such as mental health rehabilitation, youth work, careers counselling, community development and work/life counselling, as well as pursuing roles as a registered nurse in a range of work areas.

Registration

See pathways to registration information on page 7.

Work-integrated learning

As part of the Bachelor of Nursing component of this course, work placements are conducted throughout your course beginning in Trimester 1 of your first year. This early exposure to the clinical environment gives you extensive opportunities to develop clinical skills under the supervision of registered nurses and enables you to experience being part of a multidisciplinary health care team. You gain clinical experience in a variety of settings, including acute/sub-acute care, medical and surgical care, aged care, rehabilitation, paediatrics, community nursing and mental health nursing, spending approximately 21 weeks in various health care settings, including hospitals and community health centres in metropolitan, rural and regional areas.

Clinical placement requirements

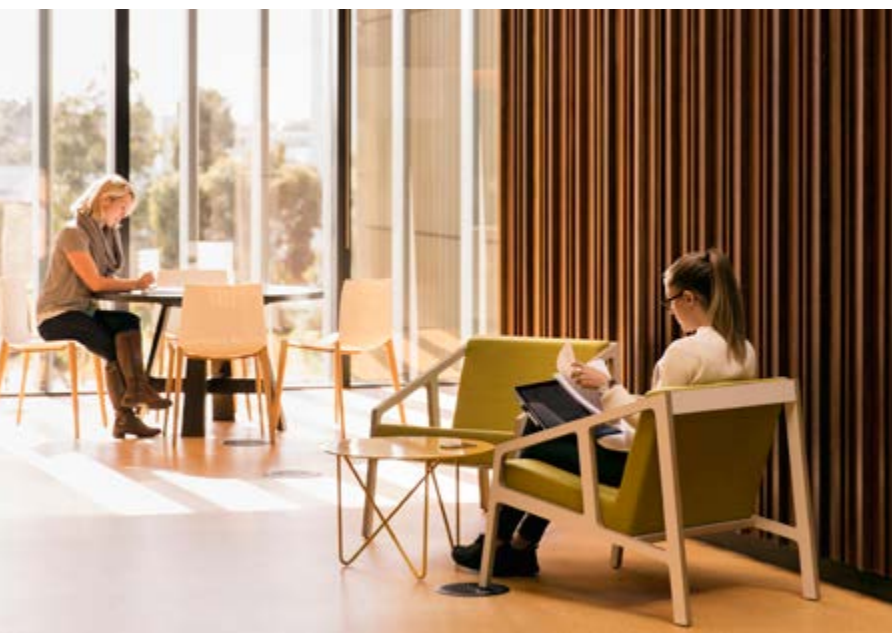
In accordance with Department of Human Services policy¹, nursing students are required to undertake a Police Record Check prior to work placements in each calendar year of their course. In accordance with the *Working with Children Act 2005*², all students are required to undertake a Working with Children Check at commencement of the course. If you fail to obtain a Police Record Check and/or a Working with Children Check by the date specified each year by the School of Nursing and Midwifery, you will not be able to undertake the required related work placement. You may also be required to declare your immunisation status to satisfy the requirements of health organisations where you will be undertaking your work placement. All expenses associated with the work placement are your responsibility.

1 Department of Human Services Policy on Working with Children Check and Police Record Check can be found at: www.dhs.vic.gov.au/facs/bdb/fmu/service-agreement/4.departmental-policies-procedures-and-initiatives/4.6-safety-screening-for-funded-organisations.

2 Department of Justice 2007, *Working with Children Act 2005*, Victoria, Australia, retrieved 16 June 2008.

^ All nursing and midwifery courses require a Special Tertiary Admissions Test Multiple Choice (STAT MC) where the applicant has not completed Year 12 (or equivalent) or any tertiary study (minimum Certificate IV) within the last 10 years (from commencement date of the course applied for). Enrolled nurses applying for nursing courses are not required to sit the STAT MC.

~ Unpublished means that the course is available at that campus, but the clearly-in ATAR isn't available.



[deakin.edu.au/study-at-deakin/
find-a-course/psychology](http://deakin.edu.au/study-at-deakin/find-a-course/psychology)



BACHELOR OF HEALTH SCIENCES/ BACHELOR OF ARTS **B**

DEAKIN CODE	DURATION	2016 CLEARLY-IN ATAR
D391	4	B 63.60
YEAR 12 PREREQUISITES	NON-YEAR 12 REQUIREMENTS	
VCE units 3 and 4 – a study score of at least 25 in English (EAL) or 20 in English other than EAL.	Educational history including GPA, VTAC Personal Statement (some) and STAT (some).	

The Bachelor of Health Sciences/Bachelor of Arts provides you with the opportunity to structure your own course by combining subjects from a wide range of health and arts-related units. Study areas in environmental health; exercise science; family society and health; food studies; health promotion; health and sustainability; medical biotechnology; nutrition; people society and disability; physical activity and health; psychology; and sport coaching are available, combined with politics and policy, public relations and journalism, for example. With more than 20 arts major sequences available, you can elect to study a major that complements your health focus or alternatively provides additional career prospects.

RELATED COURSE

BACHELOR OF MANAGEMENT – MAJOR SEQUENCE IN ORGANISATIONAL PSYCHOLOGY+ **3 B WF C**

Organisational psychology provides a contemporary integrative approach to psychology and human relationships, recognising the importance of, and interrelationships between, personality, culture and cognition, as well as the psychological functions and dysfunctions that shape behaviour in the real world. It provides a foundation in psychology for today's managers seeking knowledge and skills in understanding, developing and managing the human aspects of their role.

See also *2017 Undergraduate Business* booklet or visit deakin.edu.au/business.

+ The organisational psychology major sequence is designed to complement other studies within the Bachelor of Management. It does not meet the requirements for entry into fourth-year studies in psychology, nor does it lead to a professional qualification in psychology.

'I'm interested in understanding why people think, feel and behave the way they do. The Deakin Academic Scholarship I received covered 100 per cent of my tuition fees, which allowed me to really focus on my studies and spend less time working. I've also been fortunate to gain some really valuable experiences through volunteer work.'

HOLLY JOHNSON

Psychology (honours) student



COURSES TO CAREERS

At Deakin, we're about careers and experience, not just courses. Here are just a few of your future career opportunities.



EXPLORE
KICKSTART YOUR COURSE AND CAREER EXPLORATION

Visit explore.deakin.edu.au to kickstart your course and career exploration at Deakin. With more than 600 paired courses and careers, it's the perfect destination for you to explore your future career.

COURSE

POSSIBLE CAREERS

AREAS YOU COULD WORK IN

- Community organisations
- Coaching and counselling
- Policy making
- Justice system
- Human resources
- Marketing
- Social research
- Health and human services
- Research

WHAT EMPLOYERS WANT IN THEIR EMPLOYEES

- Interpersonal communication skills
- Passion
- Logic and technical skills
- Good academic results
- Work experience
- A good cultural fit
- Emotional intelligence
- Teamwork skills
- Leadership skills

Source: Graduate Outlook Survey, Graduate Careers Australia

Bachelor of Psychology (Honours)



- Organisational psychologist
- Clinical psychologist
- Educational and development psychologist

Bachelor of Psychological Science



- Organisational psychologist
- Human resources manager

Bachelor of Arts (Psychology)



- Child protection officer
- Clinical psychologist
- Human and health services manager

Bachelor of Health Sciences –
10-credit-point major sequence
in psychology



- Community development officer
- Education and development psychologist
- Counsellor



FEATURE CAREER

Organisational psychologist

Work with employees to achieve a productive work environment. Counsel groups and individuals to help them understand themselves and each other in order to maintain a healthy workplace.

Attributes

Analytical and problem-solving skills; interpersonal communication skills; emotional intelligence.

Indicative average salary

\$78 000

FEATURE INDUSTRY

Coaching and counselling

Work with people to help them to identify and define their emotional issues through therapies such as cognitive behaviour therapy, interpersonal therapy and other communication therapies.

Attributes

High degree of empathy; good listening skills; high level organisational skills; ability to be self-motivated and proactive.

Indicative average salary

\$66 000

A wide-angle photograph of a paved path in a park-like setting. Several students are walking along the path, some in groups and some alone. The path is flanked by green grass and trees, with sunlight filtering through the leaves.

FIND OUT MORE

GO ONLINE

Visit us online at deakin.edu.au for detailed information on everything at Deakin. See also deakin.edu.au/psychology and deakin.edu.au/health.

TALK TO US

For more information and all general enquiries, please phone 1800 MYFUTURE (1800 693 888). You can also contact us via email at myfuture@deakin.edu.au.

VISIT US

There are many opportunities throughout the year to visit Deakin, experience a campus tour and talk with representatives in person.

To organise a campus tour and presentation for an individual or group, please phone 1800 MYFUTURE (1800 693 888), email myfuture@deakin.edu.au or visit deakin.edu.au.

For our 2016 Open Day dates, see the back cover of this booklet.

For more information on event dates, visit deakin.edu.au or phone 1800 MYFUTURE (1800 693 888).

Social media at Deakin

Connect with Deakin University on Facebook, Twitter, Instagram and LinkedIn. Gain an insight into life and study at Deakin and talk with other future and current students.

 facebook.com/DeakinUniversity

 twitter.com/Deakin

 twitter.com/DeakinHealth

 instagram.com/DeakinUniversity

 Search Deakin University

Other useful websites

Victorian Tertiary Admissions Centre.
vtac.edu.au

Australian Government site detailing higher-education options in Australia.
studyassist.gov.au

Online career exploration and information service.
www.myfuture.edu.au

Australian Government site providing advice for young people thinking about their future and looking for work.
www.youth.gov.au

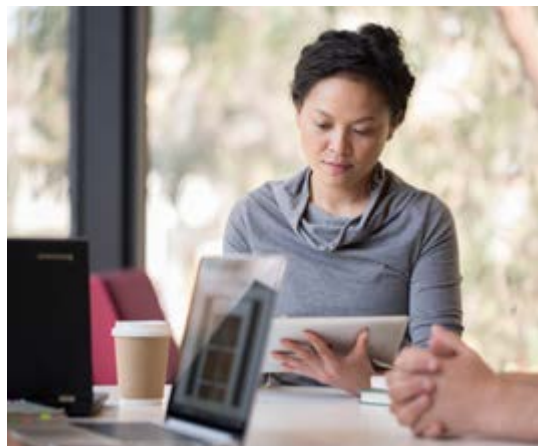
Victorian Government site with information about jobs and careers.
www.youthcentral.vic.gov.au

Further reading

Deakin University produces a range of booklets to help you choose the right course.

You can download copies of these brochures at deakin.edu.au/course-guides, or to request copies email myfuture@deakin.edu.au or phone 1800 MYFUTURE (1800 693 888).

Deakin University also produces course guides specifically for international students. To request a copy, phone Deakin International on +61 3 9627 4877 or email deakin-international@deakin.edu.au.



Health – Student and Academic Services

For more information on psychology at Deakin, please phone 03 9251 7777 or email health-enquire@deakin.edu.au.

2016 DEAKIN UNIVERSITY OPEN DAYS

07.08.16

9 AM–3 PM

**WARRNAMBOOL
CAMPUS**

Princes Highway
Warrnambool Victoria

21.08.16

9 AM–3 PM

**GEELONG
WAURN PONDS CAMPUS**

75 Pigdons Road
Waurnd Ponds Victoria

GEELONG

WATERFRONT CAMPUS

1 Gheringhap Street
Geelong Victoria

28.08.16

9 AM–4 PM

**MELBOURNE
BURWOOD CAMPUS**

221 Burwood Highway
Burwood Victoria

1800 MYFUTURE (1800 693 888)
deakin.edu.au

Published by Deakin University in April 2016. While the information published in this guide was accurate at the time of publication, Deakin University reserves the right to alter, amend or delete details of course offerings and other information published here. For the most up-to-date course information please view our website at deakin.edu.au.

Deakin University CRICOS Provider Code: 00113B 1601

