

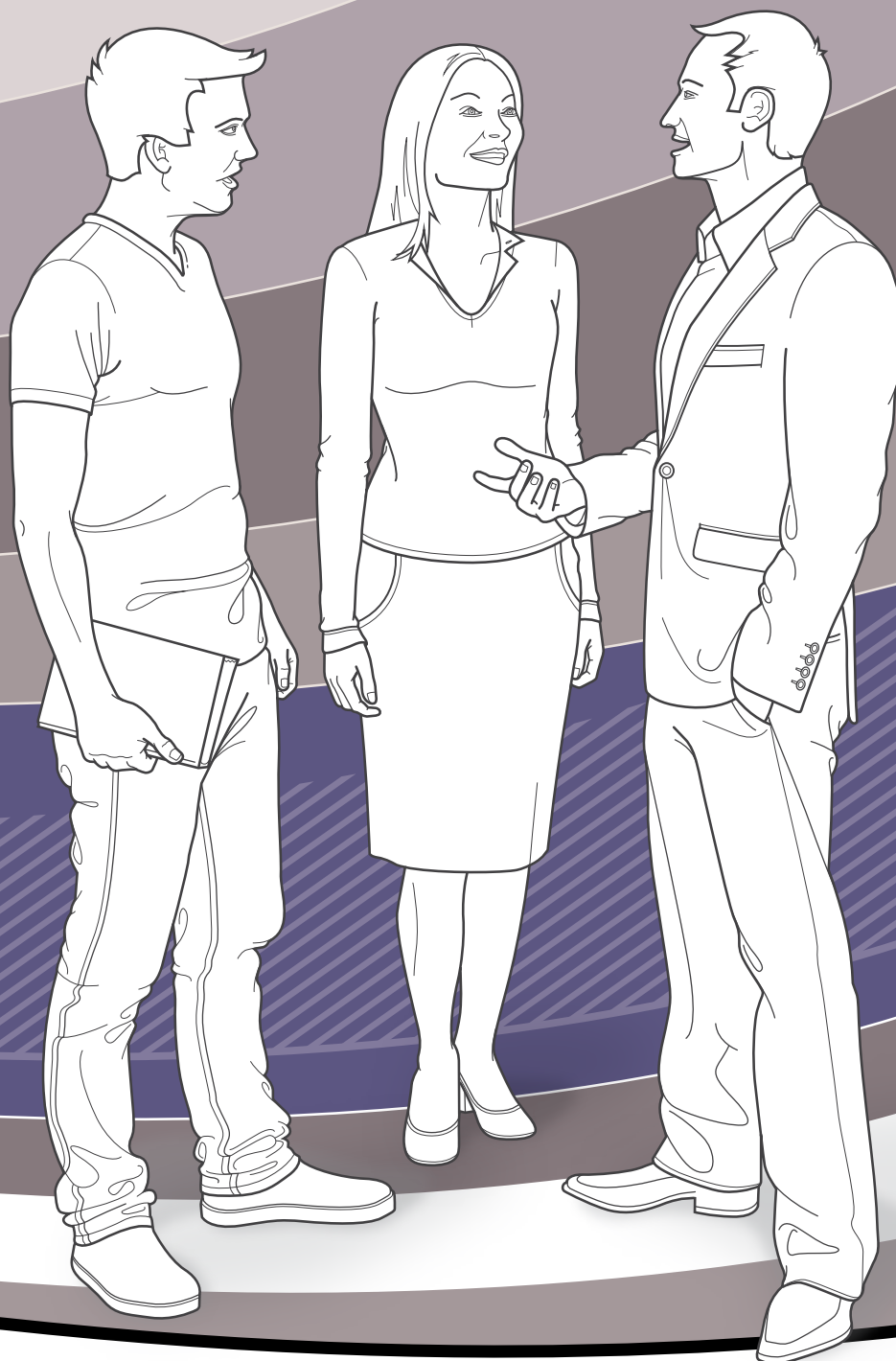


DEAKIN
UNIVERSITY AUSTRALIA

**POSTGRADUATE
COURSE GUIDE**

| MELBOURNE | GEELONG | WARRNAMBOOL | OFF CAMPUS

2013



**POSTGRADUATE
COURSE GUIDE**

Welcome to Deakin University



I am delighted to welcome you to Deakin University's *2013 Postgraduate Course Guide*.

The choice to undertake postgraduate study is a significant one and I know that many important considerations surround your decision to return to study. I hope it is with Deakin.

Deakin University offers a diverse range of flexible, high-quality postgraduate programs that are designed to complement your work, lifestyle and family commitments.

The University operates from four campuses – one in metropolitan Melbourne, two in Geelong and one on Victoria's south-west coast in Warrnambool – as well as off-campus. Each campus offers access to excellent teaching, research, ICT and library facilities.

Deakin also partners with government bodies, industry experts and some of the world's leading research institutions to produce research of distinction and relevance – an important add on to postgraduate study at Deakin.

With accredited qualifications and leading research, Deakin aims to produce well-rounded and valued graduates. Supportive staff work hard to ensure that your course meets your individual career objectives. Deakin has twice won the prestigious Australian University of the Year award and is a member of Universities Australia and the Association of Commonwealth Universities.

I invite you to read on to see what makes Deakin University such a vibrant and supportive place to study. I look forward to welcoming you to one of our campuses soon.

Professor Jane den Hollander
Vice-Chancellor

Finding more information

2013 Postgraduate Course Guide	Postgraduate study area booklets	Visit us online	Talk to us	Visit us
This guide provides a list of the postgraduate courses Deakin offers, information about types of postgraduate study, how to apply, and study options.	These booklets provide more information about each course, including course structures, career opportunities and unit descriptions. To order a copy, visit deakin.edu.au/postgrad , complete the form on the back of this book or phone 1300 DEGREE (1300 334 733).	Visit our website for more comprehensive information deakin.edu.au . To search for courses and view unit descriptions visit deakin.edu.au/courses . You can also follow Deakin through Facebook, Twitter and YouTube. www.facebook.com/discoverdeakin www.twitter.com/discoverdeakin www.youtube.com/discoverdeakin	Call 1300 DEGREE (1300 334 733) and ask to speak with a student adviser. You can also contact us via email: enquire@deakin.edu.au .	There are other opportunities to talk face-to-face to Deakin staff at events such as Open Day and Postgraduate Information Nights. See the back cover of this guide for details.

Contents

- 2 We let the results speak for themselves
- 3 Postgraduate study at Deakin
- 4 Types of postgraduate study
- 6 Choose how you study
- 7 Off-campus study
- 8 Campuses
- 10 How to apply
- 12 Student services
- 14 Fees and scholarships
- 16 Postgraduate coursework degrees**
- 38 Research that makes a difference
- 39 Research degrees**
- 45 Our Alumni Community
- 46 Key terms
- 47 Find out more
- 49 Important dates

Postgraduate coursework degrees

- 17 Architecture and built environment
- 18 Arts, humanities and social sciences
- 19 Business and law
- 24 Communication, media and creative arts
- 26 Education
- 28 Engineering
- 29 Health
- 30 Information technology
- 31 Medicine
- 32 Nursing and midwifery
- 33 Nutrition and dietetics
- 34 Optometry
- 35 Psychology
- 36 Science and environment

Research degrees

- 39 Faculty of Arts and Education
- 40 Faculty of Business and Law
- 42 Faculty of Health
- 44 Faculty of Science and Technology

Using this guide

This guide provides an introduction to Deakin University – the range of courses it offers, the support services available and an insight into life as a Deakin postgraduate student.

It is designed to be read in conjunction with our postgraduate study area booklets and Deakin website, which contain detailed course information.

You can apply online for a Deakin course, track the progress of your application and accept your offer at deakin.edu.au/apply.

Deakin University also produces course guides specifically for international students. To request a copy phone Deakin International on 03 9244 5095, visit deakin.edu.au/international or email deakin-international@deakin.edu.au.

We let the results speak for themselves

Anything is possible with a postgraduate degree from Deakin University. Like our graduates, you too could achieve greater success in your career.

No matter what stage of your career, there are many reasons to consider further studies. A postgraduate qualification will not only increase your knowledge in a specialised field of study, it will also help you to stand out in the marketplace and expand your career opportunities.

Increased income and job satisfaction

Our research tells us that, among students who complete a Deakin postgraduate degree, the proportion with salaries above \$100 000 per year increases by 61 per cent within 12 months of graduating, and 93 per cent of graduates experience greater job satisfaction.*

Career advancement

If you are keen to boost your career, a postgraduate degree can give you an edge in the competitive job market. A recent survey of Deakin graduates found that 42 per cent attained a more senior position within a year of completing their postgraduate studies.*

Many employers recognise and reward higher qualifications in acknowledgement of the professional skills and strategic thinking required to attain a postgraduate degree. And, if you need to gain a professional accreditation, a postgraduate degree is often the fastest way to gain the qualification you require.

Expand your networks

Postgraduate studies at Deakin enable you to expand your professional and social networks, and study with like-minded people who share similar interests. Once you graduate, you can also continue to build on your University networks through Deakin University's Alumni Community. Visit deakin.edu.au/alumni for more information.

* Research conducted by First Point Research and Consulting, 2010.



GRADUATE SNAPSHOT



Shane Bilsborough
Master of Human Nutrition, 2000
Campus: Off campus
Career: Former Founding Director, Global Corporate Challenge

'Deakin was a clear standout – the quality of lecturers did it for me. I wanted to study nutrition because it has always interested me and, like most people, I had many questions but very few answers. Given that everyone is concerned about various aspects of nutrition, which includes fad dieting, fat metabolism and how these relate to heart disease and diabetes, I thought seeking a knowledge of this complex interaction was worthwhile.'

Postgraduate study at Deakin

What is postgraduate study?

Postgraduate courses are for students who have completed an undergraduate degree or for those with relevant work experience. You can start postgraduate studies to advance your career or switch to a completely new field. It can also enable you to follow a personal interest. You can also pursue your own theories or ideas at a high level, through postgraduate research studies.

Study how, when, and where you want

At Deakin it's your choice. Multiple course entry and exit points, deferment, off-campus study, residential programs, and full-time and part-time study options all allow you to structure your study to suit your work, family and lifestyle commitments.

150+ postgraduate courses

With more than 150 postgraduate courses to choose from, Deakin offers you a broad range of options. In addition to providing high-quality traditional programs, Deakin continually adapts and develops new courses to meet the ongoing demands of the Australian and international labour markets.

Choose your study environment

With campuses located in Melbourne at Burwood, and Geelong and Warrnambool on Victoria's south-west coast, Deakin allows you to choose between metropolitan or regional study environments. You can also choose to study from your home or office by studying off campus.

Relevant and responsive courses

Deakin responds to community and industry needs. Each course is designed and regularly reviewed by Course Advisory Boards, comprised of academic and industry experts. These experts provide advice on all aspects of a course (including the skills sought by industry employers), and share industry knowledge, connections and placements.

Real world experience

Deakin provides opportunities to gain valuable, hands-on experience. Workplace skills are taught by industry professionals and practical experience is gained through placements, internships and overseas study programs. In some courses, Deakin offers opportunities to study overseas as part of your degree, bringing a different perspective to your studies and helping you to consolidate your learning in an international context.

Self-paced online learning

We are proud of our innovative, flexible online study options for postgraduate students. The following online resources are used by both off-campus students and on-campus students taking an online subject:

- » Desire2Learn – the core learning management system used to deliver web-based course material and assessment tasks; it also facilitates communication and collaboration between students and staff, and contains an ePortfolio.
- » iLecture – an automated media capture system that can provide online access to video, audio and lecture recordings via streamed Quicktime files, podcasts and MP3 downloads.
- » eLive – a communication tool that allows students and staff to talk online in real time and share video presentations.

Fast-track your degree

With three intakes a year, Deakin's trimester system gives you the potential to fast-track your degree, allowing you to progress your career by graduating sooner. The trimester system may also mean you can commence your postgraduate qualification when it suits you.

Staff and environment

Students tell us that Deakin's supportive staff and friendly environment make it a great place to meet different people with new ideas. Our welcoming atmosphere also ensures that we continue to treat our students as individuals with freedom of thought and action.

Achievements

Deakin's recent achievements have been recognised through many awards, including nine Citations for Outstanding Contributions to Student Learning in the 2011 Australian Learning and Teaching Council Awards.

In the recent Excellence in Research for Australia (ERA) rankings, Deakin received the top ranking of 5 – defined as well above world standards – in materials engineering, medical physiology, human movement and of sports sciences, and zoology. The University also received a ranking of 4 – defined as above world standards – in the engineering and medical and health sciences clusters. The 2010 Australian Graduate Survey of 2009 Postgraduates showed Deakin University students had the highest overall satisfaction rating in Victoria.

Residential study program

Deakin University's award-winning residential study programs give professionals the opportunity to complete a unit in five consecutive days of intensive study. Participants immerse themselves in the unit content, undertake innovative and experiential learning activities, and build their professional networks. Residential programs are conducted at the Deakin Management Centre – a purpose-built, world-class, residential executive leadership centre at the Geelong Waurn Ponds Campus.



FOR MORE INFORMATION VISIT
deakin.edu.au/postgrad

Types of postgraduate study

Whether you are a recent graduate wanting to differentiate yourself in the marketplace or an experienced professional seeking a career change or advancement, there is a Deakin postgraduate course to suit your needs.

Coursework or research?

You may undertake postgraduate study by coursework or research. The best option for you will depend on your reasons for studying.

A postgraduate degree by coursework typically involves a series of units, with specific coursework and assessments. A research degree involves completing an approved program of research under the guidance of one or more supervisors within a prescribed time period.

If you are interested in undertaking postgraduate study as a way of changing career, advancing your existing career, or meeting the professional requirements to pursue your chosen career, a coursework program may be the right choice for you.

Research degrees encourage you to develop independent research skills, and are for those of you who want to pursue their own theories and ideas at a high level. Skills developed as part of a research degree include the ability to formulate a significant research problem, and relate the research to the broader framework of knowledge in the chosen area, and the mastery of appropriate skills to tackle the problem. Research results are usually incorporated into a thesis, which is submitted for assessment. The thesis must be a self-contained, integrated and coherent body of work which constitutes a substantial original contribution to knowledge as judged by independent experts.

Traditionally, research-level study has been viewed as a pathway to a research or academic career. However, employers now recognise that the varied skills gained through a research degree program are also highly applicable in the workplace.

For more information on the type of postgraduate study that best suits you and your career aspirations, please visit deakin.edu.au/postgrad.

DID YOU KNOW?

The Deakin University Postgraduate Survey* found that students who completed Deakin postgraduate programs:

- » increased their job satisfaction by 93 per cent within 12 months
- » increased their salary – the number of graduates with \$100K+ salaries increased by 61 per cent in the first 12 months after completion of their degree.

Pathways to postgraduate study

At Deakin there are many pathways to postgraduate studies and in some instances you can use your relevant work experience as the basis for admission into programs at a graduate certificate level. Once completed, you can then articulate into a graduate diploma or masters course. If you have already completed an undergraduate degree you can usually choose whether to embark on a masters degree, graduate diploma or graduate certificate. If you choose to undertake a graduate certificate or graduate diploma and then wish to progress to a masters degree, you will usually receive Credit for Prior Learning.

To enrol in a research degree you usually need to have completed an undergraduate degree with honours or a masters degree with a substantial research component. Other qualifications may be accepted if the relevant Faculty considers them equivalent and you can demonstrate evidence of your research ability.

Honours

For many students, honours is the first opportunity to undertake their own research. Honours is a specialised year of undergraduate study that allows you to draw together the theory and practical skills gained in previous undergraduate studies and develop an in-depth knowledge of your particular discipline through research and additional coursework.

At Deakin you can apply to undertake honours in one of two ways:

On-course honours award

Choose a course that has honours embedded within the course, e.g. Bachelor of Engineering and Bachelor of Psychology. This type of honours award recognises outstanding achievement in a bachelors degree program of four or more years which has an embedded honours component.

Research-based honours award

Choose a course that allows you to undertake an additional year of study, e.g. Bachelor of Arts or Bachelor of Health Sciences. This type of honours award allows you to undertake specialised research and research training.

* Research conducted by First Point Research and Consulting, 2010.



FOR MORE INFORMATION VISIT
deakin.edu.au/courses

Coursework degrees

Graduate certificate

These courses enable you to develop skills in a specialised area that may or may not directly relate to your undergraduate degree. Some graduate certificates are designed for those who have not completed an undergraduate degree and, once completed, the award can be used as a pathway to further postgraduate studies.

A graduate certificate can usually be completed in six months of full-time study or the part-time equivalent.

Graduate diploma

Graduate diplomas are more specialised and are usually vocationally focused. Entry is usually based on completing a bachelors degree or equivalent; however, alternative entry may be possible, based on professional or industry experience, or other relevant approved qualifications. A graduate diploma can usually be completed in one year of full-time study or the part-time equivalent.

In most cases the graduate certificate and graduate diploma can be used as stepping stones towards the completion of a masters degree.

Masters by coursework

These courses are usually designed with the professional in mind. They are courses in which the qualification is directly relevant to a career area, and have the added benefit of providing an environment for networking with like-minded people. A masters by coursework can often be completed in 12 to 18 months of full-time study or the part-time equivalent.

Doctor of Business Administration (DBA)

The DBA qualification represents the highest level of educational achievement for professionals who want to develop research capability which may be directly applied to business practice. The program provides an opportunity to extend your business knowledge and your ability to communicate professionally as well as to undertake independent research in an area of specialist interest, and consists of coursework plus a major research project, completed in three years of full-time study or the part-time equivalent.

Contact hours

The contact hours for a coursework degree can vary depending on the type of course and your mode of study. For example, off-campus students are advised to spend approximately 10 hours of study per week per unit. If you are enrolled as an on-campus student, most units require three contact hours per week, plus up to seven hours per week of independent study time.

For more details, please visit deakin.edu.au/courses.



FOR MORE INFORMATION VISIT
deakin.edu.au/research

Research degrees

Deakin provides research degree programs to match a variety of career plans and personal circumstances. Part-time or full-time study is available on campus and some programs may also be available off campus.

Masters by research

A masters by research degree is awarded for an original contribution to knowledge achieved in up to two years of full-time candidature (or two to four years of part-time candidature). Usually, a thesis of not more than 50 000 words is submitted for assessment.

Doctor of Philosophy (PhD)

Doctoral degrees are awarded for a substantial original contribution to knowledge achieved in two to four years of full-time (or four to eight years part-time) candidature. Usually a thesis of not more than 100 000 words is submitted.

In the case of both masters by research and PhD degrees, the program may include some coursework but the focus of the degree is on research.

Doctor of Psychology (PhD)

A Doctor of Psychology combines a research project, coursework and structured research tasks that are specifically related to professional practice and are often carried out in the workplace. Deakin offers Doctor of Psychology degrees in the areas of clinical, health and forensic psychology. At least two-thirds of these programs are based on research.

Deakin Research

Deakin Research provides a central administration service for all students undertaking a research degree at Deakin University. It is one of the main points of contact for you and your supervisor on all matters relating to research degrees. These include applications, scholarships, enrolments, changes of candidature, supervision matters, ethics in relation to research, biosafety in relation to research, as well as the examination process.

For more information, please contact:

Deakin Research

Phone: +61 3 9251 7124
research-hdr@deakin.edu.au
deakin.edu.au/research

Support from the Faculty

As a research degree student you are supported within your Faculty and School. Each Faculty determines its own management structure for research degrees, and you are encouraged to consult the relevant Faculty about the staff responsibilities and contacts in this area.

For contact details, see the research page of your Faculty of interest, pages 39 to 44, or visit deakin.edu.au/faculties.

Contact hours

Undertaking a research degree requires a significant commitment of time – at least 36 hours per week for 48 weeks of the year, for a full-time student.

Choose how you study

At Deakin you can choose from a variety of teaching delivery methods including traditional on-campus lectures, podcasts, iLectures, online tutorials and residential programs. Flexible course entry and exit points, and full-time and part-time study options allow you to choose the pace of your study. Also, by tailoring a course to match your career goal, you can specialise in one area or opt for a breadth of topics. There is no limit to your options.

On-campus study*

On-campus coursework students usually receive a combination of lectures and tutorials.

Lecture sizes vary from 20 to 100 students, while tutorial classes are generally smaller, more informal and allow for open discussion of issues raised in lectures. Assessment may take a variety of forms, including written work and tests undertaken in class, group assignments, participation in class or laboratory sessions, and may include final examinations each trimester.

Fieldwork or practical experience can also form a large part of the content and assessment of some units.

Off-campus study*

Off-campus units, or units offered by distance education, are similar to on-campus units; the only difference is that rather than attend classes in person, you study away from a campus using a variety of other methods, including online technologies, study guides, reading lists and audiovisual materials. Deakin offers a variety of coursework and research programs in off-campus study mode.

For more information about off-campus study see page 7 or visit deakin.edu.au/future-students/mature-age/study-online.

Combine on and off-campus study*

Another aspect of the flexibility available to Deakin students is the option to combine on and off-campus study during your course (provided the units offered in your chosen course are available in both study modes).

Online learning

All courses have an online component. Access to online education adds another dimension to your degree and prepares you for further success in your career. Online learning aims to complement traditional teaching. Delivering units online creates an opportunity for you to learn in a variety of ways and gives you more control over your learning. You can access your online units 24/7, giving you the flexibility to study when and where it suits you. Online learning provides you with valuable experience in a world that is increasingly dependent on information technology.

Trimesters

Deakin operates a trimester system, meaning there are three study periods during the teaching year. Deakin's trimesters run from March to June, July to October and November to February.

Our trimester system gives you greater flexibility and creates options for you to commence your degree sooner or at a more convenient time of year. It enables you to speed up or slow down your study, or even fast-track the completion of your degree by taking extra units throughout the calendar year. You may even choose to take a trimester off to fit your study around work, travel or family commitments.

Studying in Trimester 3 is not compulsory. For more information, please visit deakin.edu.au/trimesters.

Study full time or part time

You can study full time or part time depending on the number of credit points/units you take in each trimester, and you can also switch from full time to part time and vice versa throughout your degree. Every unit (subject) you enrol in has a credit point rating and most postgraduate units are equivalent to 1 credit point. If you are enrolled in 3 or more credit points in a trimester, you are considered a full-time student for that trimester. A small number of courses are only available full time, and some are only available part time.

International study tour

Some courses offer study tours that enable you to gain credit towards your degree without extending the length of your studies. It's not every day that you can have breakfast in China with a lecturer in international business, wander around the Taj Mahal discussing the Mughal Empire with an expert in Indian commercial law or discuss potential investing opportunities with an international business manager. Study tours integrate educational, cultural and practical experiences, placing your studies in an international context.

Single-subject (non-award) study

You can pursue your personal or professional interests with a Deakin single-subject (non-award) unit.

Most units offered by Deakin are available for non-award study; however, some have prerequisites or special requirements. Enrolling in a single-subject allows you to test the waters before enrolling in a full program. If successfully completed, the unit may be counted as credit towards your chosen course at Deakin, subject to admission to a course and approval by the Faculty.

Practical programs

Some postgraduate programs allow you to take up a practical component during your studies. This gives you the opportunity to put theory into practice, make contacts and build networks that will serve you well beyond graduation. A practical learning experience teaches skills that can't be learnt in the classroom and develops personal qualities that make Deakin graduates stand out from the crowd. For example, the Deakin Graduate School of Business offers two units aimed at giving you real-world business experience while earning credit toward your degree. These are the Business Practicum and the Postgraduate Internship.

* Please check whether your course or units are available both through on-campus study and off-campus study.

Off-campus study

Off-campus study – or distance education – is fast becoming the preferred way to combine postgraduate study with work, family or lifestyle commitments.

For many, it's simply not possible to attend university on-campus. As an off-campus student your study parallels that of an on-campus student – the only difference is that you determine when, how and where you study. With a comprehensive range of online units, study materials and Deakin's teaching and learning support, postgraduate study has never been more accessible.

Deakin – a distance education leader

Deakin has a proud history in distance education. Founded on a commitment to off-campus teaching in the 1970s, Deakin has been a flagship university for its delivery of accessible and flexible higher education.

It is now one of only four Australian universities to receive international accreditation from the Accrediting Commission of the US Distance Education and Training Council (DETC), and the DETC accredits Deakin's full range of off-campus courses – up to and including masters.

More courses, more choices

Deakin offers most of its postgraduate courses in off-campus study mode which means you have a wide range of programs to choose from. These range from graduate certificates through to masters degrees.

Study support

As an off-campus student you are provided with a strong network of support including study guides, reading lists, CDs and DVDs and Deakin's 'Software Essentials'. You also have access to the resources of Deakin's Library as well as interactive study methods such as iLectures and podcasts.

Other off-campus support includes:

- » online conferencing for peer support and group and individual communication between our staff members and students
- » tutorial and tele-tutorial groups which give you the opportunity to discuss unit requirements with your tutor and make contact with other students
- » optional weekend classes – usually held once each trimester, these classes enable you to meet your peers and academic staff members
- » specialist off-campus career advisers and language and learning advisers who can help you with course direction and the development of your study skills and techniques
- » online workshops to improve your study skills
- » online bookshops at www.dusabookshop.com.au.

Library services for off-campus students

As an off-campus student you will be well-supported by Deakin's award-winning library services. You can access quality online resources anywhere and at any time, visit the library and borrow from our extensive collection, or request books and other study materials to be sent to you.

Connected ... and in control

As an off-campus student you will have a direct link to all your enrolment and fee records through StudentConnect which is your personal information gateway at studentconnect.deakin.edu.au/connect/webconnect.

StudentConnect allows you to:

- » access course completion details
- » access eCAF (electronic Commonwealth Assistance Form) and eCAN (electronic Commonwealth Assistance Notice)
- » access exam timetables
- » access fees information and make payments
- » access results
- » find and print assignment cover sheets
- » find Credit for Prior Learning information
- » re-enrol
- » receive confirmation of enrolment
- » track your assignments
- » update your address details
- » vary your enrolment.

Need to know more?

deakin.edu.au/future-students/mature-age/study-online or deakin.edu.au/future-students/online-offcampus-studies

GRADUATE SNAPSHOT



Nishad Shah
Master of Information Technology (Professional), 2008
Melbourne Burwood Campus
Now: IT Transformation Project Architecture (Coles Group)

As an international student, Nishad Shah researched options world-wide for an information technology degree.

'I found that Deakin provided the best academic exposure with a great opportunity to work in corporate industry ... it is also IT-accredited at the highest level by the Australian Computer Society and Deakin's IT degree is well recognised internationally.'

He says it was an industry-based-learning (IBL) opportunity in his final semester that secured his employment pathway.

'Deakin gave me the opportunity to work in a six-month IBL placement ... after completing this, I was confident enough to start applying for graduate positions and I am now working in IT for one of the largest Australian retailers.'

Nishad says Deakin gave him a solid foundation for his career.

'Study at Deakin is very interactive, rather than just one-way communication ... Deakin gave me the platform to stand with confidence in the real world.'



Campuses

Deakin University has four campuses in the state of Victoria – one in Melbourne, two in Geelong and one in Warrnambool.

Each of our campuses offers a unique atmosphere – from the inspiring architecture and seaside appeal of our Geelong Waterfront Campus, to the café culture of our Melbourne Burwood Campus, the spectacular coastal location of our Warrnambool Campus or the mix of activity and open space at our Geelong Waurn Ponds Campus.

Every Deakin course adheres to the same high standards, regardless of where you study. So a Graduate Diploma of Psychological Studies at the Warrnambool Campus is the same as a Graduate Diploma of Psychological Studies at the Geelong campuses.*

* A particular course may not be offered at every campus.



Geelong Waterfront Campus

The Geelong Waterfront Campus is located on Corio Bay, in the central business district of Geelong, and currently has approximately 2300 students. Originally built as woolstores in 1893, the buildings have been extensively renovated to create a modern and impressive campus. Services and facilities include:

- » Computer-Aided Design (CAD) laboratories
- » design studios
- » the Alfred Deakin Prime Ministerial Library and the Alfred Deakin Research Institute – an interdisciplinary teaching and research centre covering political science, public policy and governance, international relations, globalisation, journalism and communications.



Geelong Waurn Ponds Campus

On the western edge of Geelong, the central hub of this campus is being transformed to provide a contemporary learning environment, refurbished student amenities and improved IT access in informal spaces.

The campus hosts more than 4700 students and is also home to the Geelong Technology Precinct (GTP), which provides research and development capabilities and opportunities for university–industry partnerships.

The medical precinct at this campus will be significantly upgraded, with Epworth HealthCare committing to build a 250-bed private hospital by 2013. In addition, the State Government has committed \$85 million for a 32-bed public hospital. The campus is also home to the soon-to-be-completed Deakin Regional Community Health Hub (REACH), which will include a 200-seat lecture theatre and specially designed teaching and laboratory spaces for exercise and sport science and optometry students.



FOR MORE INFORMATION VISIT
deakin.edu.au/campuses



Melbourne Burwood Campus

This thriving campus, approximately 15 km from the CBD, is Deakin's largest, with almost 20 000 students. It boasts open and inviting spaces, innovative architecture, spacious new buildings, wireless locations, the Deakin University Art Gallery and the Deakin Motion.Lab – motion capture facility.



Warrnambool Campus

Located three and a half hours' travel west of Melbourne, Deakin's Warrnambool Campus features excellent teaching and learning spaces, purpose-built for niche courses, such as the freshwater and marine biology courses.

Transport

Deakin's campuses are all accessible by public transport or car. There is limited on-campus car parking. For public transport information for all campuses, please visit www.victrip.com.au. For information about how to travel to Deakin campuses in an environmentally friendly way, such as cycling, public transport or car pooling, please visit deakin.edu.au/travelsmart.

Campus maps and more information can be found at deakin.edu.au/campuses. To book a tour, please email enquire@deakin.edu.au.



How to apply

Applying for postgraduate programs at Deakin is easy – you can even track the progress of your application online.

Coursework applications

Most students applying for a postgraduate coursework degree will need to have previously completed an undergraduate degree; however, there are other pathways. If you have considerable work or life experience you may be able to use this to obtain admission into a graduate certificate or graduate diploma course. You may then progress to a masters degree.

A postgraduate qualification can advance your career or you may use it to help change direction and move to a completely new industry.

Application process

Step 1 – Choose your program

You can select up to three course preferences.

Step 2 – Register

Register as a user deakin.edu.au/apply.

Step 3 – Apply online

Start your online application.

Step 4 – Documentation

Provide supporting documentation including:

- » certified copies of your undergraduate and/or postgraduate qualification/s
- » curriculum vitae detailing work experience applicable to your course application
- » certified copy of name change documentation if you have previously studied at Deakin under a different name.

You may also be asked to provide a personal statement outlining what you hope to obtain from your qualification.

Step 5 – Submit

Submit the completed online application.

Step 6 – Verification

Once the application has been submitted you will receive an email to confirm the successful submission of the application including an application number.

You can track the progress of your application by logging into deakin.edu.au/apply where the status of your application will appear.

Step 7 – Accept your offer

If you are offered a place, you will need to accept it online within a specified timeframe.

Step 8 – Enrolment

If you have been offered and accept a place you will be emailed enrolment information with further details.

Application dates

Applications for enrolment in Trimester 3, 2012 and Trimester 1, 2013 open in August 2012. Applications for Trimester 2, 2013 open in April 2013.

We encourage you to submit your application early because some courses have limited places or quotas. Applications received after the quotas have been filled for Trimester 1 commencement will be considered for a place in Trimester 2.

Some postgraduate courses, such as the Master of Teaching have alternative application processes and closing dates.

For the most up-to-date information, please visit our website deakin.edu.au/postgrad or phone our customer service team on 1300 DEGREE (1300 334 733) to request a postgraduate study area booklet.



FOR MORE INFORMATION VISIT
deakin.edu.au/apply

Research applications

Deakin offers three types of research degrees: Masters by Research, Doctor of Philosophy (PhD) and Doctor of Psychology (DPsych).

A research degree requires the candidate to complete an approved program of research under the guidance of one or more supervisors within a time period. The supervisors will be experienced and active researchers with expertise in the field of study.

Application process

Step 1 – Entry pathways

Demonstrated capacity to undertake significant research in your proposed field is needed. This includes:

- » completion of an honours degree
- » completion of a research or coursework masters degree
- » comparable qualifications from international universities
- » relevant postgraduate research experience
- » independently peer-reviewed journal articles, publications, or conference papers
- » professional reporting or prior learning
- » research related awards or prizes
- » other evidence of research ability.

Step 2 – Find our research strengths

Search our websites and publications to confirm that Deakin has the expertise to supervise your project.

Step 3 – Research proposal

Write a 750-word proposal (or 300 words if applying to the Faculty of Science and Technology or the Institutes) to demonstrate a clear vision of what you want to study, why this is a topic of personal interest, and how you will approach the research question.

Step 4 – Further documents

Other documents you are required to submit include:

- » any published research – including the name of the publication and a copy of the contents and abstract pages.

Post a certified copy of:

- » proof of Australian citizenship or permanent residency, or New Zealand citizenship (e.g. birth certificate, passport, citizenship certificate or visa)
- » transcripts of all of your tertiary education studies except those undertaken at Deakin University
- » proof of your start date and evidence of any intermissions or changes of candidature (e.g. from full time to part time) if you are applying to transfer a research degree from another institution
- » proof of any name changes (e.g. marriage certificate).

Step 5 – Academic referees' reports

Confidential reports from two academic referees are required. Request reports from current or former lecturers, or academic or employment supervisors who are able to comment on your research expertise and potential.

Step 6 – Apply now

Once you have the relevant information register your application online. Visit deakin.edu.au/research/admin/hdradmin/online-forms/hdr-application.

Step 7 – Enrolment

If you have been offered a place you will receive enrolment information with further details via email.

English language requirements

If your first language is not English, Deakin University reserves the right to seek further documentary evidence of English proficiency. For more information, please visit deakin.edu.au/future-students/research/english-language-requirements.

For more information, contact your relevant Faculty via the Faculty contact details on pages 39 to 44.

Application dates

Applications for candidature without scholarship may be made at any time. Applications for scholarships have deadlines. For domestic applicants (citizens and permanent residents of Australia, and citizens of New Zealand) the scholarship round closes at the end of October.

For more information visit deakin.edu.au/future-students/research/scholarships/index.

For more information

If you are interested in a research degree, please contact:
Deakin Research
Phone +61 3 9251 7124
research-hdr@deakin.edu.au
deakin.edu.au/future-students/research.

DID YOU KNOW?

Postgraduate studies at Deakin enable you to expand your professional and social networks, and study with like-minded people who share similar interests.

Student services

Deakin University offers a complete range of services and programs – from career advice to IT support and health services.

Study advice

Throughout your time at Deakin, study advice is available in areas including time management, reading and note-taking, developing your academic English, avoiding plagiarism, critical thinking, writing essays and reports, class presentations, exam preparation, as well as advice designed specifically for research students.

For more information, visit deakin.edu.au/study-skills.

Career development and employment

Our careers and employment service has been recognised nationally by graduate employers and other universities for its support to students, and its innovative careers programs. We offer career guidance, job search assistance, and interview and resume skills training.

Deakin University can help with your career options upon completion of your postgraduate course, including providing individual consultations with a careers counsellor.

Please visit the careers service at deakin.edu.au/future-students/services-facilities/careers.

Counselling and personal support

Professional and experienced counsellors provide free, confidential counselling where personal concerns or stresses are affecting your studies, as well as a range of programs and strategies to help you achieve success at university.

For more information, visit deakin.edu.au/counselling.

Library

Many of the resources you'll need to successfully complete your studies are online and easily accessible wherever you are – any day, any time. You can access a comprehensive collection of course readings, academic journals, e-books and subject databases. The mobile-friendly catalogue and other key resources are great when you're on the go, please visit m.library.deakin.edu.au.

Visit the library in person for more great resources and access to our expert staff, as well as comfortable, contemporary study spaces, bookable group rooms, wi-fi and computers.

For more information, including opening hours, please visit deakin.edu.au/library.

Financial support

The University offers financial assistance to students, including interest-free loans, grants, food vouchers and rental assistance.

For more information, please visit deakin.edu.au/financial-assistance.

Medical centre

Deakin University offers medical and nursing healthcare, including GP consultations, to students across all campuses.

Campus nurse consultations are free and all services are strictly confidential.

For more information, please visit deakin.edu.au/current-students/services/health.

IT at Deakin

All students can access 24-hour computer laboratories on each campus, and email and internet access for study purposes.

The laboratories include Apple Macintosh and IBM computers and provide a range of software and facilities, including Microsoft Office, internet access, multimedia tools, statistic and specialist teaching software and laser printing.

When you commence your studies at Deakin you will receive a CD-ROM (Software Essentials) containing software, information and support programs and the necessary links to communicate electronically with University staff.

Disability services

Students with a health condition or a disability (long term or temporary) that affects access or ability to study should contact the Disability Resource Centre soon after enrolment.

The staff will develop a plan with you that may include:

- » alternative assessment arrangements, such as extra writing time and/or rest breaks in exams
- » academic support workers, such as note-takers and sign interpreters
- » study materials in accessible formats
- » help with assistive technology and training
- » information about extended library services, scholarships, and other services.

For more information, please visit deakin.edu.au/disability.

Getting help

The University encourages all students to report any incidents of discrimination by contracting a Harassment and Discrimination Contact Officer: deakin.edu.au/equity-diversity/info-students.





FOR MORE INFORMATION VISIT
deakin.edu.au/studentlife

Childcare

There are childcare centres at Deakin's Burwood, Waurin Ponds and Warrnambool campuses. Places are limited and in high demand so enquiries should be made as early as possible.

More information about our childcare services can be found at deakin.edu.au/studentlife.

Deakin University Student Association (DUSA)

DUSA is independent from the University and dedicated to enriching your university experience. DUSA membership gives you discounts on trips, entertainment and short courses, as well as access to clubs, sporting activities, and student representation and advocacy. DUSA also manages campus bookshops where you can purchase academic and general books.

Find out more at www.dusa.org.au.

An Elite Athlete Friendly University

Deakin is dedicated to supporting elite athletes in their quest to achieve academic success alongside the demands of training and competition. That's why Deakin is a member of the Elite Athlete Friendly University (EAFU) network.

For information about Deakin's support for elite athlete students, please visit deakin.edu.au/future-students/why-deakin/eaflu.



GRADUATE SNAPSHOT



Stephen Monahan
Bachelor of Design (Architecture)/
Bachelor of Construction Management (Honours), 2009
Master of Architecture (Design), 2010
Geelong Waterfront Campus
Employed: Sinclair Knight Merz

'Whilst at the basic level of providing shelter, buildings can be works of art. They can affect our attitudes and emotions, and for better or worse, they leave our mark as humans on the earth. Whilst there was a strong emphasis on design at Deakin, there was also recognition of the equal importance of construction technology, environmental sustainability and professional practice. I had the opportunity to study alongside fantastic people, forge networks within the built environment industry and enter a number of architectural competitions.'

Fees and scholarships

Postgraduate coursework degree fees

Tuition fees are assessed based on the unit(s) in which you are enrolled. This means you pay fees for the units you choose in your course, rather than paying a fixed course price. Different units have different costs, based on how much it costs the University to provide the particular unit.

Course and unit details and associated fees can be found by using the course search tool deakin.edu.au/future-students/courses.

Please confirm fees when you are applying by visiting deakin.edu.au/future-students/fees or phoning 1300 DEGREE (1300 334 733).

FEE-HELP loan program

FEE-HELP is a loan program that assists eligible fee-paying students to defer the payment of their tuition fees. FEE-HELP can cover all or part of your tuition fees. The Australian Government pays the amount of the loan direct to your higher education provider.

Over your lifetime you can borrow up to a maximum FEE-HELP limit which is indexed annually. For all courses, except medicine, the maximum limit is \$89 706 (2012). For medicine, the maximum limit is \$112 134 (2012).

For postgraduate courses, there is no real interest charged on your debt. Your accumulated HELP debt is indexed annually to maintain its real value, by adjusting it in line with changes in the cost of living (as measured by the Consumer Price Index).

Am I eligible for FEE-HELP?

You are eligible for FEE-HELP assistance if you:

- » are enrolled in a fee-paying postgraduate coursework program (not research)
- » are not a Commonwealth supported student
- » are an Australian citizen or a holder of an Australian permanent humanitarian visa (who meets eligibility requirements)
- » meet the Tax File Number (TFN) requirements
- » have not exceeded the maximum indexed FEE-HELP limit.

If you obtained a loan under HECS, PELS, BOTPLS or OLDPS prior to 2005, the amount you borrowed does not affect your eligibility for FEE-HELP. Only the amount borrowed to pay tuition fees using FEE-HELP after 1 January 2005 is counted towards the FEE-HELP limit.

Holders of other permanent visas are not eligible for FEE-HELP unless they are undertaking a bridging course for overseas trained professionals.

When do I start repaying my FEE-HELP loan?

FEE-HELP debts are added to any existing HECS or HECS-HELP debts to form a single HELP debt.

Students repay their loans through the Australian taxation system once their income is above the minimum threshold for compulsory repayment. For more information you can download the Australian Government's *FEE-HELP information for 2012* brochure. Alternatively, you can visit the Government's *Study Assist* website at www.studyassist.gov.au or phone the new student funding measures enquiry line on 1800 020 108.

Student income support

If you are undertaking a professionally oriented coursework masters degree that is required for entry to a profession or is the fastest pathway to professional entry (see deakin.edu.au/future-students/fees/local/income-support-pg.php), you may be eligible for student income support.

To be eligible for student income support through Centrelink Youth Allowance and Austudy, you will need to be studying full time and to satisfy all other program requirements, including personal, parental or partner income tests. Please contact Centrelink on 13 2490 for more information about masters courses income support entitlements.

A guide to course fees

The following table is a guide for 2012 domestic postgraduate tuition fees for each of the various disciplines. Fees are per year, for an Equivalent Full Time Study Load (EFTSL), normally 8 credit points. That means, these are annual fees for a full-time student (studying 8 credit points per year). So, if you are a part-time student, studying 4 credit points per year, your annual fees would be approximately half the figure quoted here. These costs are for 2012.

Funding cluster description	\$ per EFTSL
Law	\$22 712
Accounting, Administration, Economics, Commerce	\$21 400
Public Relations	\$16 552
Humanities	\$13 816
Mathematics, Statistics	\$19 568
Computing	\$20 744
Built Environment	\$22 280
Other Health	\$18 840
Social Studies	\$16 224
Behavioural Sciences excluding Clinical Psychology	\$20 376
Education	\$14 976
Clinical Psychology	\$20 960
Foreign Languages, Visual and Performing Arts	\$18 856
Allied Health	\$21 968
Nursing	\$17 968
Engineering, Surveying	\$25 224
Science	\$25 224
Dentistry, Medicine, Veterinary Science	\$49 320
Agriculture	\$31 848

Commonwealth Supported Place (CSP) students

Some postgraduate courses at Deakin offer Commonwealth Supported Places, for which the government pays a proportion of tuition costs. Depending on the course, an Australian Commonwealth supported student at Deakin in 2012 can expect to pay between \$4355 and \$9080 per year of study. These fees may change for 2013.

Eligible students may obtain loans via the Higher Education Contribution Scheme-Higher Education Loan Program (HECS-HELP). Repayments are made through the Australian taxation system once annual income exceeds the minimum threshold for repayment. Alternatively, eligible students can pay their contribution upfront and receive a discount.

To find out whether a course has CSPs available refer to the course table; if a course offers a CSP, a CSP fee will be listed in the table (for example, see Master of Architecture on page 17). Please note, CSPs are usually limited so please apply early.

Student services and amenities fee

In addition to course fees, students also pay a student services and amenities fee. A summary of the student services and amenities fee for 2012 is detailed in the table below.

Student type	Enrolment	Amount
Domestic on-campus undergraduate and postgraduate students	Full time (three units or more)	\$87 per trimester
Domestic on-campus undergraduate and postgraduate students	Part time (one–two units)	\$55 per trimester
Domestic off-campus undergraduate and postgraduate students	Full time and part time	\$42 per trimester

Scholarship opportunities

Deakin offers a variety of scholarships to help support you financially during your studies.

General information about scholarships at Deakin is available at deakin.edu.au/scholarships. More detail on scholarships for students enrolling in postgraduate research degrees at Deakin University is available at deakin.edu.au/research/admin/scholarships.

You can also visit the Commonwealth scholarships information website for links to a range of scholarships relevant to postgraduate study, including Australian postgraduate awards www.studyassist.gov.au. Many industry and community scholarships are also available.

International students

For information about fees and courses available to international students, please contact Deakin International for a copy of the *Postgraduate Course Guide* for International Students via email, deakin-international@deakin.edu.au, phone +61 3 9244 5095, or online, deakin.edu.au/international.

Course fees and tax benefits

When you enrol in a postgraduate course you may be entitled to an income tax deduction for your course fees and study-related expenses. You may be able to claim for your course fees, textbooks, stationery, student association fees, depreciation on equipment (for example your computer), or some of your travel expenses between home and the University or between work and the University. There is a threshold below which your expenses may not be claimable.

For the Australian Taxation Office (ATO) to allow self-education expenses to be tax deductible a direct connection must exist between your course and your existing work. If you are studying the course in order to maintain or improve a skill or specific knowledge that is required in your existing work, your course expenses might be tax deductible.

To clearly demonstrate to the ATO that a direct connection exists, you might have to provide a supporting statement from your employer.

Please note that this information is provided as a guide only. For more information about study and tax arrangements, please speak with your accountant or tax adviser or visit the ATO website www.ato.gov.au.

Cost-sharing with employers

Some employers provide financial and other support, such as study leave, for staff members who are completing study that is directly related to their employment and the employer's core business. At Deakin, many people are studying a postgraduate course with their employer's help.

Study support policies benefit both the employer and the employee.

For employers, when they support relevant study programs, they can help attract and retain well-qualified and experienced staff members. Before you approach your employer for study assistance, you should check to see whether a support policy is in place.

Try to give your employer every reason to agree to your application. It can help if you provide your employer with a written submission outlining the benefits and the direct and indirect costs involved.

The submission could include information about:

- » the course you wish to study
- » any tax deductible aspects of the program
- » a summary of the short and long-term benefits that would flow to you and your employer
- » an estimate of the total course costs of fees, textbooks and other materials
- » an estimate of the time you would be required to be away from work in order to attend classes and exams, prepare reports and so on
- » what assistance you are requesting for aspects such as sharing of costs and granting of time off work.

Many employers are willing to share the course costs. They might either reimburse you after you have successfully completed the course or pay a percentage of the individual unit fees at the end of each trimester.

If your employer is reluctant to support your study application, consider suggesting you form an agreement to cover contingencies. For example, propose that if you withdraw from or fail a subject or leave your job within a year of finishing the course, you will offer to pay back some of the fees your employer has paid.

Research degree fees

Australian citizens, Australian permanent residents and New Zealand citizens are not required to pay tuition fees for the normal duration of their research degree candidature, i.e. up to a maximum of four years of full-time equivalent study for a doctoral candidate and two years of full-time equivalent study for a masters candidate.

Postgraduate coursework degrees

The following pages provide a snapshot of our different postgraduate study areas, as well as listing all our postgraduate coursework degrees. Footnotes for all tables are listed below. For more information about courses refer to the postgraduate study area booklets or visit our website, deakin.edu.au.



Postgraduate coursework degree table footnotes

Information correct at April 2012, Deakin University reserves the right to alter, amend or delete course offerings and other information listed.

- 1 Fees quoted are for Australian domestic students and should be used as a guide only. Fees are based on a typical enrolment in one year of full-time study. All fees quoted are for Fee-Paying Places, unless indicated CSP (Commonwealth Supported Place). Actual tuition fee charged may depend on the units studied and is subject to change. Master program students please note: where the length of the master program is 12 units or 1.5 years of full-time study equivalent, the indicative fee may not be a full fee for the course. For more fee information, including information about the FEE-HELP loan program and how you can defer your payments, see page 14 or visit deakin.edu.au/fees.
- 2 Most courses start in Trimester 1. This column indicates whether you have the option of commencing your studies in Trimester 2 or Trimester 3. Not all units are offered in every trimester.
- 3 Entry into the Master of IT (Professional) is via articulation from and on completion of S778 Master of IT or S781 Master of Networking and Security only.
- 4 Graduate entry preservice teaching qualification.
- 5 Off-campus course, however, attendance required on campus for a core unit intensive workshop.
- 6 Also offered through the Institute of Koorie Education, which uses community-based delivery.
- 7 The Bachelor of Medicine Bachelor of Surgery is taught across two semesters.
- 8 Students have the opportunity to exit with a Graduate Certificate of Engineering after completion of 4 credit points.
- 9 Trimester 2 intake may be available subject to sufficient enrolments and is at the discretion of the Head of School.
- 10 Availability of units may be limited in Trimester 3.
- 11 Exit options are available at the graduate certificate (4 credit points) and graduate diploma (8 credit points) levels.

PT = Part time

FT = Full time

N/A = Not available at time of printing, please visit deakin.edu.au.

CSP = Commonwealth Supported Place

FPP = Fee-Paying Place

T1 = Trimester 1

T2 = Trimester 2

T3 = Trimester 3

S1 = Semester 1

KEY

- 3** Course duration in years
- PT** Part time
- B** Melbourne Burwood Campus
- F** Geelong Waterfront Campus
- G** Geelong Waurin Ponds Campus
- W** Warrnambool Campus
- X** Off campus

Architecture and built environment

Architecture

Deakin University's postgraduate architecture courses have been designed to respond to global changes in architecture education. The Master of Architecture is available to students who have completed an accredited three-year program in architecture. The Master of Architecture (Design) is available to students who have completed an accredited four-year program in architecture, or to qualified practising architects or architecture academics who may wish to upgrade their qualifications.

You will gain highly developed skills and knowledge in design computing technologies, information transfer, complex project design, addressing practice in different cultural conditions and employing performance-measured sustainable design, all of which are expected in modern professional practice.

Construction management

Deakin's postgraduate construction management courses open the door to construction management education and professional careers for students, either with or without a construction management undergraduate degree. It offers the opportunity for a conversion program to graduates from a built environment and civil engineering background. It also offers a pathway for graduates working in the industry who have completed an undergraduate degree from an unrelated discipline.

Facilities management

Facilities management is concerned with the management, use and performance of buildings and their support services. The scope of work ranges from asset and property management, effective planning and design of space, productivity enhancing practices and information management to service operational efficiency, sustainable practices, security, maintenance and adaptation.

Deakin's Master of Facilities Management will equip you to work across traditional professional boundaries, from property investment and development through to space management and workplace logistics, using key project management skills to ensure optimum value for money is attained at all stages of the property life cycle.

Landscape architecture

Deakin's Master of Landscape Architecture has been developed for people wishing to practise as landscape architects who have a passion to improve the quality and development of our towns, cityscapes and regional landscapes by creating ecologically responsive places of renewal, stimulation, healing and respect.

Focused upon sustainability, the course addresses the creation of quality places in response to current and future environmental and lifestyle challenges. It provides opportunities to specialise in project management, public art curatorship and management, cultural heritage, urban design and change management planning.

The Master of Landscape Architecture is accredited by the Australian Institute of Landscape Architects (AILA, www.aila.org.au). Graduates satisfy the educational requirements for AILA graduate membership as the first step towards applying for professional recognition as an AILA Registered Landscape Architect.

Planning

Deakin's planning program provides an innovative and flexible career pathway that meets and addresses the challenges of an ever-changing urban, regional and rural environment to enable you to actively participate in planning and guiding these challenges. The Master of Planning (Professional) has been designed to produce professionally qualified graduates who are analytical, informed and committed to improving the quality of the urban environment. The Master of Planning (Professional) has interim accreditation from the Planning Institute of Australia (PIA).

Urban design

If you are looking to build your skill and knowledge base and take a pathway to influence sustainable urban renewal, Deakin's postgraduate program in urban design can give you a competitive advantage.

Deakin's Master of Urban Design will give you the knowledge and skills to develop innovative, sustainable design solutions for the urban environment. You will learn to think strategically and implement effective change management practice.

The course will increase your professional skills in place-making, advanced integrated design, sustainable urban ecologies, and change-management practices.

For more information about these courses, please refer to the *2013 Postgraduate Architecture and Built Environment Study Area Booklet* or visit deakin.edu.au/postgrad.

Course name	Course code	Years full time	Campus	Trimester intake options ²	Indicative 2012 annual fee FT ¹
Architecture and built environment					
Master of Architecture	S700	2	F	T1,T2	\$22 280 (FPP) \$8060 (CSP)
Master of Architecture (Design)	S701	1	F	T1	\$22 280 (FPP) \$8050 (CSP)
Master of Construction Management ¹¹	S791	1.5	X	T1, T2, T3	\$22 090
Master of Construction Management (Professional)	S792	2	X	T1, T2, T3	\$22 020
Master of Facilities Management ¹¹	S795	1.5	X	T1, T2	\$25 740
Master of Landscape Architecture ¹¹	S703	2	F	T1, T2	\$21 320
Master of Planning (Professional) ¹¹	S764	2	B X	T1, T2, T3	\$20 790
Master of Urban Design ¹¹	S702	1.5	F	T1, T2, T3	\$22 280

Postgraduate coursework degrees

Arts, humanities and social sciences

Applied social research

Deakin's Master of Applied Social Research responds to the needs of government and industry for specialist researchers with the capability to engage meaningfully and effectively with the communities they serve. It provides relevant training relating to the demand for high quality information in changing environments, including social policy, community settings, consultancies and private organisations.

Cultural heritage and museum studies

Our cultural heritage and museum studies courses encourage a holistic approach, aimed at developing skills in protecting and making the significant elements of cultural heritage accessible. There is a strong focus on historic places, intangible heritage and museums and their collections.

The courses are designed for students wanting to work in the museum and built heritage sectors.

International and community development

Deakin's international and community development program is one of the longest established in Australia, giving you the assurance of many years of experience in teaching this highly developed course.

Development programs and project work for poverty reduction are major areas of professional employment. Deakin's international and community development courses have been developed for professionals seeking to advance their careers by gaining relevant, skills-based and theoretically sound professional qualifications.

International relations

Deakin's international relations courses are professional development programs providing relevant and respected postgraduate qualifications for those who work, or aspire to work, in the public service, private business organisations, humanitarian organisations and non-government organisations.

Through these courses you will develop a systematic understanding of the international forces that shape our environment and the skills to analyse and interpret international events.

Politics and policy

Deakin's politics and policy courses focus on the development, implementation and politics of public policy. They explore the close relations between government, the private sector and community organisations, and the links between different levels of government (local, state, national, and international). Particular attention is paid to the challenges of making governance consistent with the norms of accountability and democracy.

For more information about these courses, please refer to the *2013 Postgraduate Arts, Humanities and Social Sciences Study Area Booklet* or visit deakin.edu.au/postgrad.

Course name	Course code	Years full time	Campus	Trimester intake options ²	Indicative 2012 annual fee FT ¹
Arts, humanities and social sciences					
Master of Applied Social Research	A719	1	X ⁵	T1,T2	\$16 490
Graduate Certificate of Cultural Heritage	A585	1PT	B X	T1, T2, T3	\$8115
Graduate Diploma of Cultural Heritage	A685	1	B X	T1, T2, T3	\$16 230
Master of Cultural Heritage	A785	1.5	B X	T1, T2, T3	\$16 230
Master of Cultural Heritage (Honours)	A786	2	B X	T1, T2, T3	\$16 230
Graduate Certificate of International and Community Development	A511	0.5	X	T1, T3	\$8115
Graduate Diploma of International and Community Development	A611	1	X	T1, T3	\$16 230
Master of International and Community Development	A727	1.5	X	T1, T3	\$16 290
Graduate Certificate of International Relations	A513	0.5	B X	T1, T3	\$8115
Graduate Diploma of International Relations	A613	1	B X	T1, T3	\$15 980
Master of Arts (International Relations)	A726	1.5	B X	T1, T3	\$16 240
Graduate Certificate of Museum Studies	A529	1PT	B X	T1, T2, T3	\$8115
Graduate Diploma of Museum Studies	A629	1	B X	T1, T2, T3	\$16 230
Graduate Certificate of Politics and Policy	A516	1PT	X	T1, T2	\$ 8115
Graduate Diploma of Politics and Policy	A616	1	X	T1	\$16 230
Master of Politics and Policy	A716	1.5	X	T1	\$16 330
Combined course					
Master of Politics and Policy/ Master of Business Administration	D720	2	■	T1, T2, T3	\$17 330

KEY**3** Course duration in years**PT** Part time**B** Melbourne Burwood Campus**F** Geelong Waterfront Campus**G** Geelong Waurin Ponds Campus**W** Warrnambool Campus**X** Off campus

Business and law

Accounting

A Deakin professional accounting qualification gives you access to an extraordinary range of opportunities in Australia, and throughout the world. Our professionally-accredited units can put you on the path to well-recognised industry programs such as the Institute of Chartered Accountants in Australia (ICAA), the Association of Chartered Certified Accountants (ACCA), the CPA Program of CPA Australia and the Institute of Public Accountants.

Arts and entertainment management

Arts and entertainment courses emphasise management, marketing and finance, with a series of industry-specific projects ideal for those working in the cultural industry. On successful completion of the Master of Arts and Entertainment Management you will be eligible to apply for membership of the Australian Institute of Arts Management (AIAM).

Business administration and MBA

The MBA heads the suite of Deakin's postgraduate courses in business administration, and is one of the most highly regarded MBA programs on offer. Deakin's MBA integrates a case-based teaching approach with the reality of business and professional practice. A Deakin MBA offers practical learning and real experience through study tours, intensive residential units and innovative experiential units.

Commerce

Deakin's commerce program is designed for people with non-business qualifications who are looking to gain more knowledge and expertise in the business arena. However, those with an undergraduate degree in business also find the Master of Commerce effective for developing professional skills in other areas of business competence. Our commerce courses are flexible with a range of specialist areas covering accounting, commercial law, financial planning, marketing and international trade and business, to name a few.

↗ Continued on next page ...

GRADUATE SNAPSHOT



Amy Hickman
 Master of Business Administration, 2011
 Melbourne Burwood Campus
 Currently: Director of 'Serve It Up' Hospitality
 Registered Training Organisation (RTO) and
 Sole Proprietor PHD Hospitality Consulting

'I loved (studying) on campus. I studied two trimesters full-time and the rest part-time, conducting hospitality consulting and training work around the hours at uni. The lecturers were directly from industry, bringing a wealth of practical knowledge and real life experiences to the classroom. The MBA has provided me with the skills and knowledge required to undertake these activities effectively. I have a much better understanding of the financial aspects of running a company. I also see running a company in a more holistic sense. Every decision you make affects every aspect of the business.'



Postgraduate coursework degrees

Financial planning

Deakin's financial planning courses are aimed at those aspiring to join the financial planning industry, as well as those currently employed in the industry. The courses are recognised for entry into the Certified Financial Planner (CFP) program, which is offered by the Financial Planning Association of Australia. Deakin's postgraduate financial planning units are recognised by the Australian Securities and Investment Commission as meeting the training requirements as specified under RG146.

Human resource management

Deakin's HR management courses offer specialist units in change management, employment relations, business strategy and analysis, together with elective study options from the key business disciplines of marketing, management, accounting, economics, finance and information systems. The Australian Human Resources Institute (AHRI) accredits Deakin's full suite of HR management courses.

Information systems

An expansive view of information systems and electronic business has been taken to include the associated strategies, processes, technologies and human aspects for its application in a business and social context.

Deakin's information systems courses offer specialist, advanced studies in the business-oriented principles and practices of information systems, electronic business and supply chain management.

Insurance and risk management

The Master of Insurance and Risk Management provides specific education and professional accreditation for those employed in the general insurance sectors of the insurance industry.

Depending upon unit choice, on completion of this course you may meet the educational requirements of the Australian and New Zealand Institute of Insurance and Finance's Fellowship award. Similarly, depending upon unit choice, you may meet the Australian Securities and Investment Commission's (ASIC) core and specialist competencies at Tier 1 under RG146.

International business

As business increasingly operates on a global scale there is a pressing need for enhanced management skills and knowledge appropriate to the internationalised environment. Our international business courses provide an integrated perspective by combining units on economic and financial management with those dealing with strategy, marketing, law and international relations.

International finance

Specialist studies in international finance develop a professional capability in finance, with a particular emphasis on international trade and associated financial markets. Graduates already working in the finance industry will enhance their professional capabilities in a range of finance domains. Graduates without a background in finance will gain advanced knowledge in financial markets and appropriate research methodologies.

Depending on unit choice, graduates of the Master of International Finance may gain membership of the Finance and Treasury Association (FTA), Financial Planning Association (FPA) and the Financial Services Institute of Australia (FINSIA).

Law

The Deakin's postgraduate law courses are designed for both those working in the legal profession and for those with a business background looking to gain knowledge in commercial law.

The Master of Commercial Law introduces legal research and writing, and the opportunity to engage in independent research. Commercial law units cover key areas such as corporation law, income tax, international commercial law, internet law, corporate governance and trade practices.

The Graduate Certificate of Commercial Law (Financial Crime Control) is designed for current prospective regulators and corporate officers who wish to deepen their understanding of the complexities of financial crime and the key legal and other strategies employed to combat these offences.

GRADUATE SNAPSHOT



Marc Walker
Master of Commercial Law, 2011
Off campus
Currently: Program Commercial Systems Manager, AECOM

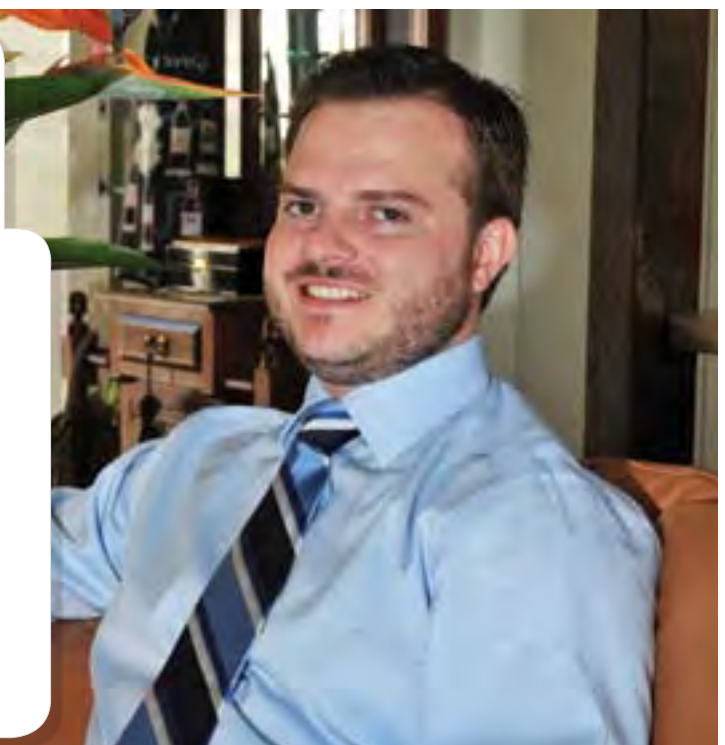
'This degree propelled me into an international role', says Marc who was offered an eight-month assignment in the United Arab Emirates even before completing his studies.

Now preparing for another overseas stint, Marc says Deakin's flexible learning options provided a solution to the study/work balancing act.

'I was working full time and I didn't have time to go to lectures during the day. I shopped around and saw that Deakin had the things that I was looking for.'

Marc adds that Deakin's choice of electives also played a deciding factor.

'Looking at all the universities, I could see the elective list would enable me to tailor my degree for my intended career path. It's like completing a specialised law degree with very specific subject matter. I really enjoyed the ability to customise my learning. The trimester system also enabled me to complete subjects without needing to take a break and complete the degree at my own pace.'



Leadership

Leadership is important at every level of human organisation and may become more important than technical skills as you rise up the chain of command. The Master of Contemporary Leadership is designed with the learning needs of mid-career adults in mind. There is emphasis on learning from experience, through work-based projects and through intensive residential courses that provide a 'hot-house' learning environment.

Marketing

Deakin's postgraduate marketing courses comprise specialist, professional study for graduates who have not previously studied marketing. Students gain an understanding of the theoretical, practical and research frameworks that underpin marketing, and develop the research, strategy and communication skills crucial in each of the key areas of marketing.

Personal injury management

Deakin's personal injury management courses have been designed to meet the academic needs of a commercial partner – the Personal Injury Education Foundation (PIEF) and its constituent members.

The personal injury management courses are administered by DeakinPrime, the University's corporate education arm.

For more information, please phone 03 9918 9106 or email pimhelpdesk@deakinprime.com.

Property

The Graduate Diploma of Property has been designed for professionals such as architects, surveyors and construction managers looking to broaden their careers in the built environment and graduates with degrees in commerce, management or law disciplines wishing to move into property. Study areas include statutory valuation, sustainable construction, property investment, property law and practice, property development and advanced property valuation.

The Graduate Diploma of Property has been designed to satisfy the academic requirements for registration as a Certified Practising Valuer with the Australian Property Institute (API).

Retail management

The Graduate Certificate of Retail Management is aimed at people working in the retail sector who wish to develop specialist skills and knowledge to enhance their professional experience. The course covers all core aspects of retailing, marketing, and merchandise management.

The course aims to broaden knowledge and understanding of retail management by considering it in a number of contexts, including the Australian retail sector and international retail markets, while exploring global issues such as economic and environmental sustainability, along with social and cultural matters.

Sport management

The principle focus of sport management is to prepare managers with the skills to provide leadership and direction for sporting organisations. Deakin's sport management courses are offered within the framework of a business education, emphasising management, marketing and finance. A number of disciplines are drawn on, including sociology and psychology, to contribute to an understanding of sport in its broader social context and incorporating theories of leadership motivation and consumer behaviour.

For more information about these courses, please refer to the *2013 Postgraduate Business and Law Study Area Booklet* or visit deakin.edu.au/postgrad.

➔ Continued on next page ...

GRADUATE SNAPSHOT



Kasia Maruszak
Master of Marketing, 2010
Melbourne Burwood Campus and off campus
Currently: Marketing Specialist, ANZ Private
and ANZ Trustees

When a career in physiotherapy wasn't exactly what she hoped for, Kasia Maruszak took a sideways step into corporate health and safety – an opportunity that soon opened up other career possibilities.

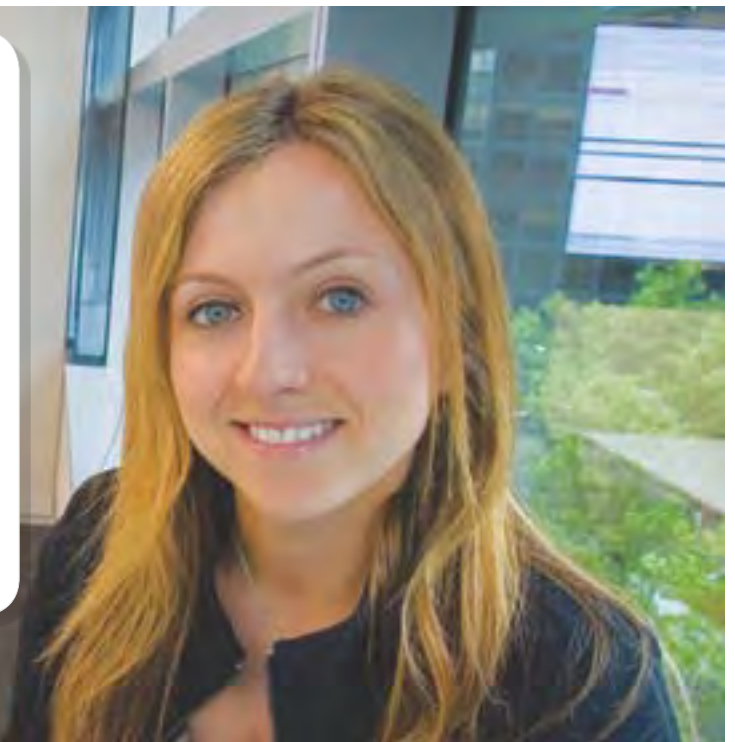
'The move enabled me to collaborate with a corporate marketing team and it really gave me a buzz. I knew then that marketing was what I wanted to do,' she says.

Deciding to undertake postgraduate study while working full time, Kasia needed flexible study options and says Deakin's online facilities and quality lecturers made her postgraduate study a rewarding experience.

'I can really see the difference when I hear people from other universities complaining about their lecturers. I feel quite lucky.'

Kasia is now a marketing specialist for ANZ Private – a sub branch of ANZ that looks after high net worth clients.

'I manage our client email communication program which showcases our thought-leadership and investment/advisory capability and provides clients with the information they need to better manage their wealth.'



Postgraduate coursework degrees

Course name	Course code	Years full time	Campus	Trimester intake options ²	Indicative 2012 annual fee FT ¹
Business and law					
Accounting					
Graduate Certificate of Accounting	M506	0.5	B X	T1, T2, T3 ¹⁰	\$21 590
Graduate Diploma of Accounting	M696	1	B X	T1, T2, T3 ¹⁰	\$21 510
Master of Professional Accounting	M720	1.5	B X	T1, T2, T3 ¹⁰	\$21 550
Graduate Certificate of Chartered Accounting Foundations	M537	1 PT	X	T1, T2, T3	\$10 860
Arts and entertainment management					
Graduate Certificate of Arts and Entertainment Management	M519	0.5 (FTT1 only)	X	T1, T2	\$10 705
Master of Arts and Entertainment Management	M735	1	X	T1, T2	\$21 010
Business administration					
Graduate Certificate of Business Administration	M501	0.5	B X	T1, T2, T3	\$10 695
Graduate Diploma of Business Administration	M601	1	B X	T1, T2, T3	\$21 300
Master of Business Administration	M701	1.5	B X	T1, T2, T3	\$21 350
Graduate Diploma of Business Administration (International)	M631	1	B	T1, T2, T3	\$21 320
Master of Business Administration (International)	M731	1.5	B X	T1, T2, T3	\$21 410
Doctor of Business Administration	M901	3	B X	T1, T2, T3	\$21 400
Graduate Certificate of Corporate Management	M507	0.5	B X	T1, T2, T3	\$10 700
Graduate Diploma of Management	M607	1	B X	T1, T2, T3	\$21 620
Commerce					
Graduate Certificate of Commerce	M516	0.5	B X	T1, T2, T3	\$10 735
Graduate Diploma of Commerce	M616	1	B	T1, T2, T3	\$21 490
Master of Commerce	M705	1.5	B X	T1, T2, T3	\$21 420
Contemporary leadership					
Graduate Certificate of Contemporary Leadership	M538	1 PT	B X	T1, T2	\$10 700
Graduate Diploma of Contemporary Leadership	M638	1	B X	T1, T2	\$21 400
Master of Contemporary Leadership	M738	1.5	B X	T1, T2	\$21 400
Financial planning					
Graduate Certificate of Financial Planning	M540	0.5	B X	T1, T2	\$10 700
Graduate Diploma of Financial Planning	M640	1	B X	T1, T2	\$21 530
Master of Financial Planning	M740	1.5	B X	T1, T2	\$21 500
Human resource management					
Graduate Certificate of Human Resource Management	M515	1 PT	X	T1	\$10 700
Graduate Diploma of Human Resource Management	M615	2 PT	X	T1	\$21 400
Master of Human Resource Management	M782	3 PT	X	T1, T2, T3	\$21 400
Information systems					
Graduate Certificate of Information Systems	M522	0.5 (FTT2 only)	B X	T1, T2	\$10 375
Graduate Diploma of Information Systems	M622	1	B X	T1, T2, T3	\$20 750
Master of Information Systems	M722	1.5	B X	T1, T2, T3	\$20 790
Insurance and risk management					
Graduate Certificate of Insurance and Risk Management	M573	1 PT	X	T1, T2, T3	\$10 700
Master of Insurance and Risk Management	M773	1	X	T1, T2, T3	\$21 440

KEY

3 Course duration in years

PT Part time

B Melbourne Burwood Campus

F Geelong Waterfront Campus

G Geelong Waurin Ponds Campus

W Warrnambool Campus

X Off campus

Course name	Course code	Years full time	Campus	Trimester intake options ²	Indicative 2012 annual fee FT ¹
International business					
Graduate Certificate of International Business	M572	0.5 (FT T1 only)	B X	T1, T2, T3	\$10 700
Graduate Diploma of International Business	M651	1	B X	T1, T2, T3	\$21 490
Master of International Business	M723	1.5	B X	T1, T2, T3	\$21 130
International finance					
Graduate Certificate of Finance	M530	0.5	B X	T1, T2, T3 ¹⁰	\$10 700
Graduate Diploma of International Finance	M630	1	B X	T1, T2, T3 ¹⁰	\$21 400
Master of International Finance	M730	1.5	B X	T1, T2, T3 ¹⁰	\$21 410
Law					
Graduate Certificate of Commercial Law	M525	0.5	B X	T1, T3	\$10 985
Graduate Certificate of Commercial Law (Financial Crime Control)	M584	1 PT	X	T1, T3	\$11 095
Master of Commercial Law	M725	1	B X	T1, T2, T3	\$22 220
Marketing					
Graduate Certificate of Marketing	M528	0.5	B X	T1, T3	\$10 710
Master of Marketing	M728	1	B X	T1, T2, T3	\$21 290
Personal injury management					
Graduate Certificate of Management (Personal Injury)	M534	1 PT	X	T1, T2, T3	\$10 610
Graduate Diploma of Management (Personal Injury)	M634	2 PT	X	T1, T2, T3	\$21 400
Master of Management (Personal Injury)	M734	3 PT	X	T1, T2, T3	\$21 190
Property					
Graduate Diploma of Property	M633	2 PT	X	T1	\$21 500
Retail management					
Graduate Certificate of Retail Management	M544	1	B X	T1	\$10 695
Sport management					
Graduate Certificate of Business (Sport Management)	M518	1 PT	B X	T1, T2	\$10 700
Master of Business (Sport Management)	M718	2	B X	T1, T2	\$21 600
Combined courses					
Master of Business Administration (International)/ Master of Commerce	D708	2	B X	T1, T2, T3	\$21 400
Master of Business Administration (International)/ Master of Information Systems	D711	2	B X	T1, T2, T3	\$21 200
Master of Business Administration (International)/ Master of International Finance	D712	2	B X	T1, T2, T3 ¹⁰	\$21 410
Master of Business Administration (International)/ Master of Professional Accounting	D709	2	B X	T1, T2, T3 ¹⁰	\$21 400
Master of Information Technology/Master of Commerce	D750	2	B X	T1, T2	\$21 400
Master of Information Technology/ Master of Information Systems	D751	2	B X	T1, T2	\$20 750
Master of Information Technology/ Master of Business Administration (International)	D754	2	B X	T1, T2	\$21 130
Master of International Finance/ Master of Professional Accounting	D707	2	B X	T1, T2, T3 ¹⁰	\$21 360
Master of Politics and Policy/ Master of Business Administration	D720	2	X	T1	\$17 330
Master of Professional Accounting/Master of Commerce	D706	2	B X	T1, T2, T3 ¹⁰	\$21 590

Postgraduate coursework degrees

Communication, media and creative arts

Advertising

Deakin offers postgraduate studies in advertising through a Master of Communication with a specialisation in advertising. This specialisation will provide you with a theoretical background along with the practical skills to ensure you can successfully engage in many roles available in the advertising industry. Through coursework you will develop individual responsibility, creative processes, critical analysis and the capacity to undertake advertising projects and campaigns. This course is unique in that it combines creative arts development with advertising communication strategies.

Children's literature

Children's literature is central to childhood development beyond the traditional notions of literacy and learning. Children engage with stories in the form of books, films and new media, and from these texts they learn ways to interpret their world and develop models for participating in their culture. Understanding the messages and agendas in texts for children is essential if we are to help children navigate the complexities of the contemporary world.

Communication

Our communication courses offer specialisations in advertising, journalism, media and communication, professional writing or publications. You can then add a range of complementary elective studies to your speciality.

Journalism

Deakin's journalism courses develop the analytical skills necessary for reporting events in context, with the aim to prepare journalists for the challenges of the twenty-first century.

The courses enable graduates to move across professional fields by building upon student knowledge bases. They are also designed for people working in the journalism industry who wish to upgrade their qualifications or to refresh or advance their professional skills.

Literary studies

These courses provide the opportunity to study, at an advanced level, a number of topics related to English or literary studies.

The courses are designed for professionals working in fields requiring high-level analytical and writing skills, such as teaching, the public service and fields related to the publishing industry where flexibility and multi-skilling enhance employment opportunities.

Media and communication

Deakin's media and communication program is distinctive because of its cross-disciplinary perspective, underpinning a broad mix of subjects. You can choose from a wide range of units that suit your particular interests.

Professional writing

Deakin's professional writing courses have been created specifically for graduates of other disciplines, with an emphasis on helping you develop the skills required to prepare work for publication.

The courses encompass studies in creative non-fiction, fiction, poetry, editing and scriptwriting.

You will be given practical experience in the process of writing and revision, and will develop an understanding of the requirements of writing and editing for different readerships.

Public relations

Deakin University's public relations courses aim to provide you with the ability to design and implement public relations campaigns, contribute to the management of organisations, conduct appropriate research, understand the role of public relations in contemporary society, and appreciate the social, administrative, cultural and ethical implications of public relations activity.

These courses are designed as an initial professional qualification for those practitioners working in public relations who wish to update their tertiary qualifications. They are also designed to equip graduates, with limited experience in the workplace, with the knowledge, skills and understanding to obtain challenging positions in the expanding field of public relations. The Graduate Diploma of Public Relations is accredited by the Public Relations Institute of Australia (PRIA).

Writing and literature

Deakin's writing and literature courses allow you to specialise in children's literature, literary studies, or professional writing, or select studies from across the professional communication area.

For more information about these courses, please refer to the *2013 Postgraduate Communication, Media and Creative Arts Study Area Booklet* or visit deakin.edu.au/postgrad.

KEY

- 3** Course duration in years
- PT** Part time
- B** Melbourne Burwood Campus
- F** Geelong Waterfront Campus
- G** Geelong Waurin Ponds Campus
- W** Warrnambool Campus
- X** Off campus

Course name	Course code	Years full time	Campus	Trimester intake options ²	Indicative 2012 annual fee FT ¹
Communication, media and creative arts					
Graduate Certificate of Children’s Literature	A562	1PT	X	T1	\$6910
Graduate Diploma of Children’s Literature	A641	1	X	T1	\$13 820
Graduate Certificate of Journalism	A549	1PT	B X	T1	\$9430
Graduate Diploma of Journalism	A649	1	B X	T1	\$18 530
Graduate Certificate of Literary Studies	A535	1PT	X	T1, T3	\$7995
Graduate Diploma of Literary Studies	A635	1	X	T1	\$15 330
Graduate Certificate of Media and Communication	A539	1PT	B X	T1	\$9340
Graduate Diploma of Media and Communication	A639	1	B X	T1	\$18 310
Graduate Certificate of Professional Writing	A561	1PT	B X	T1	\$9420
Graduate Diploma of Professional Writing	A661	1	B X	T1	\$18 430
Graduate Certificate of Public Relations	A543	0.5	B X	T1	\$8280
Graduate Diploma of Public Relations	A643	1	B X	T1	\$16 820
Master of Arts (Writing and Literature)	A748	1.5	B X	T1, T3	\$17 170
Master of Communication	A747	1.5	B X	T1	\$17 880



GRADUATE SNAPSHOT



Sharon Green
 Master of Communication (Journalism), 2010
 Melbourne Burwood Campus
 Employed: Journalist

Deakin gave me flexibility . . . and taught me to take initiative. During my final year I had to develop a small business idea and write a business and marketing plan. This allowed me to more clearly define what I wanted to achieve from my freelance career. I followed through with my plans and set up a website and social media applications to market myself and my skills. I am now based in London where I have been working on a number of freelance projects for clients and publications in Australia and the UK. I am also now deputy editor for a new health title. My idea in coming to the UK was to accumulate international experience and work in one of the top media industries in the world.

Postgraduate coursework degrees

Education

Applied learning

This innovative program prepares creative teachers and educators to work with young people in secondary schools, TAFE and Adult and Community Education agencies (ACE).

The program responds to the challenge to adequately provide young people with the knowledge, skills and values for a range of further study and employment pathways.

Educational leadership and administration

The management of learning is becoming a feature of many complex organisations that see themselves as 'learning organisations'. Courses in these areas explore what might constitute the responsibilities of those involved in managing such organisations and the learning processes within them. While schools are a focus of much of the work in this program, the basic ideas are equally applicable to other learning organisations.

Early childhood education

As Australia is on the cusp of significant growth in the early childhood education sector, this course has been developed as a new teacher education program to address the potential shortage of four-year trained kindergarten and childcare centre teachers. Deakin's course focuses on experiential learning in workplace settings and communities. This dedicated stream of study can be undertaken as part of the Master of Teaching or Bachelor of Early Childhood Education*.

Education

With several specialised areas available, we offer you an understanding of contemporary education issues and discourses; high-level critical and evaluation skills; and enable you to demonstrate the ability to undertake educational research projects.

Higher education

Our studies in higher education are designed to meet the requirements for credentialed tertiary teaching for academic staff.

Professional education and training

These courses are suitable for professional educators and trainers working or intending to work in learning and development, education and training and human resource development roles. They attract people engaged in business, government, the training sector, flexible delivery, distance education, higher education, VET in schools, TAFE teaching or in an area combining these.

* For more information about the Bachelor of Early Childhood Education, please visit deakin.edu.au/arts-ed/education/courses/grad-entry.

Special educational needs

The special educational needs courses are designed to address the needs of teachers and other professionals involved in the education of students with special educational needs. The courses address the fundamental philosophy of inclusion for people with disabilities and impairments within school education systems.

Teaching English to Speakers of Other Languages (TESOL)

We have several courses designed to address the wide diversity of educational backgrounds of students who are interested in teaching English. They are designed for experienced TESOL professionals wishing to develop their understanding of current practices as well as those seeking to obtain a teaching qualification in this area.

Teaching Languages Other Than English (TLOTE)

This course is designed for qualified and experienced TLOTE professionals who wish to reflect on, evaluate and critique their practice, and who wish to develop their understanding of contemporary second language teaching in order to take on leadership roles in their workplace.

For more information about these courses, please refer to the *2013 Postgraduate Education Study Area Booklet* or visit deakin.edu.au/postgrad.

Training and registration

It is important to check with each relevant state organisation regarding training and registration requirements. Teachers in all Victorian schools (government and independent) need to be registered by the Victorian Institute of Teaching (VIT). For more information visit the VIT web site: www.vit.vic.edu.au. Refer to the VIT specialist area guidelines for further information regarding the level of study necessary in order to teach in Victorian government schools.

Postgraduate courses offered by Deakin that meet the four-year tertiary educational requirement stipulated by VIT include:

- » Graduate Diploma of Education (Applied Learning)
- » Graduate Diploma of Teaching (Primary)
- » Master of Teaching.

KEY

- 3** Course duration in years
- PT** Part time
- B** Melbourne Burwood Campus
- F** Geelong Waterfront Campus
- G** Geelong Waurin Ponds Campus
- W** Warrnambool Campus
- X** Off campus

Course name	Course code	Years full time	Campus	Trimester intake options ²	Indicative 2012 annual fee FT ¹
Education					
Master of Education	E700 general	1	B X	T1, T2	\$14 990 (FPP) \$5650 (CSP)
Master of Education – Educational Leadership and Administration	E746	1	X	T1, T2	\$15 000 (FPP) \$5650 (CSP)
Master of Education – Special Educational Needs	E744SP	1	X	T1, T2	\$14 980 (FPP) \$5650 (CSP)
Graduate Certificate of Education – TESOL	E552	0.5	B X	T1, T2	\$7490
Master of Education – TESOL	E752	1	B X	T1, T2	\$14 980 (FPP) \$5650 (CSP)
Master of Education – TLOTE	E754	1	B X	T1, T2	\$14 980
Graduate Certificate of Higher Education	E570	0.5	X	T1, T2, T3	\$7490
Master of Teaching ^{4,6}	E760	1.5 2	B G X	T1	\$14 980 (FPP) \$5650 (CSP)
Master of Teaching English to Speakers of Other Languages	E780	1.5	B X	T1, T2	\$14 750 (FPP) \$5650 (CSP)
Master of Professional Education and Training (PET)	E792	1	X	T1, T2	\$15 080 (FPP) \$5700 (CSP)
Graduate Certificate of Education (Professional Development)	E540	0.5	B X	T1, T2	\$7490
Graduate Diploma of Teaching (Primary) ^{4,6}	E665	1	G	T3	\$14 980 (FPP) \$5650 (CSP)
Graduate Diploma of Education (Applied Learning) ⁴	E690	1	G	T1	\$14 980 (FPP) \$5650 (CSP)

GRADUATE SNAPSHOT


Margie McCormick
 Master of Professional Education and Training, 2011
 Off campus
 Employed: Midwifery educator, a large Melbourne maternity unit

'The knowledge and skills I gained have enhanced my ability to deliver high quality teaching and learning programs. I chose Deakin for postgraduate study because of the flexibility in the online and off campus approach. I work full time so the ability to complete online units was very appealing as I could study at my own pace. A highlight of my study was completing a research paper in an area specific and relevant to my practice as an educator. My research experience at Deakin was so positive and encouraging it has given me the confidence to pursue further research studies.'



Postgraduate coursework degrees

Engineering

Our postgraduate engineering program aims to strengthen, build on and extend your understanding of engineering principles required for successful engineering careers in Australia and overseas.

You will gain technical skills, a positive approach to problem solving and the ability to work as part of a team – to enable you to work on complex projects immediately.

You can choose from specialisms in mechanical engineering, electronics engineering or civil engineering. Each specialism will provide you with expertise in areas of high demand for graduates.

The program's focus on practical experience and a supervised research project or industry project provides you with advanced project management skills, which will enable you to apply your skills and knowledge to practical, industrially-focused problems.

Specialisms

Mechanical engineering

- » Product design and development

Electronics engineering

- » Automation and control systems

Civil engineering

- » Water engineering

For more information about these courses, please refer to the *2013 Postgraduate Engineering Study Area Booklet* or visit deakin.edu.au/postgrad.



Course name	Course code	Years full time	Campus	Trimester intake options ²	Indicative 2012 annual fee FT ¹
Engineering					
Master of Engineering [®]	S750	1	G	T1, T2	\$24 530
Master of Engineering (Professional)	S751	2	G	T1, T2	\$24 840

GRADUATE SNAPSHOT



Komal Dalal
Master of Engineering (Professional) –
Water Environment, 2007
Geelong Waurn Ponds Campus
Employed: Project manager, Barwon
Region Water Corporation

'Deakin has an energetic group of professors and industrial partners committed to delivering excellence in postgraduate learning. The University's association with various industries provides students with hands-on experience creating professional engineers who have a full package of workplace skills. The perfect blend of academic studies and professional experience with various industrial projects played a significant part in making me work-ready before I graduated. What I enjoy most about my job is the combination of engineering and project management.'



KEY

- 3** Course duration in years
- PT** Part time
- B** Melbourne Burwood Campus
- F** Geelong Waterfront Campus
- G** Geelong Waurin Ponds Campus
- W** Warrnambool Campus
- X** Off campus

Health

Agricultural health and medicine

The Graduate Certificate of Agricultural Health and Medicine is an interdisciplinary and applied course that delivers specialist knowledge and skills to students currently employed, or wishing to gain employment, in rural and remote health-related professions. The course focuses on improving health outcomes on the 'other side of the fence' and provides you with the necessary tools to improve the social, physical and mental health of agricultural workforces across Australia. You will learn about how poor health impacts agribusiness, agricultural production and sustainability, in addition to community stressors that impact on the wellbeing of rural and remote communities.

Clinical exercise physiology

Clinical exercise physiologists are trained to work with patients with chronic disease where exercise training has been shown to be of therapeutic benefit, including but not limited to cardiovascular disease, pulmonary disease, and metabolic disorders.

Health promotion

Increasingly, people in a wide range of professions are being asked to incorporate health promotion activities within their workplace. Deakin's postgraduate courses in health promotion provide students from varying backgrounds with the opportunity to acquire the knowledge and skills to develop appropriate approaches to health promotion practice. These courses are suited to those wishing to gain employment in the health sector, as well as those working in the health sector who wish to upgrade their knowledge and qualifications to pursue management roles.

Public health

Public health is a growing profession focused on preventing disease, prolonging life and promoting health through the organised efforts of society. Public health professionals are skilled in measuring health at population levels and understanding the broad range of social, behavioural and environmental factors that impact on health. They take action to change these factors so as to improve the health of individuals, communities and whole populations.

Public health incorporates interdisciplinary approaches to health improvement, building on a solid base of epidemiology and biostatistics with studies in a range of areas including health policy, health economics, health promotion, program development and evaluation, human rights, community participation, health sociology and research methods.

Health and human services management

Studies in health and human services management develop your leadership and management skills, and are ideal for those seeking or holding senior positions in the health sector. Throughout this course you will build on the knowledge gained in your undergraduate degree in a health-related field, such as nursing, medicine, dentistry, psychology, health promotion or social work.

Deakin's Master of Health and Human Services Management offers a unique combination of units from the Master of Public Health and the Master of Business Administration.

Social work

The Master of Social Work emphasises rural and regional communities; race and gender issues; equity, power and diversity issues; social and community development; and anti-oppressive and empowerment approaches to social work practice and social policy.

The program has a strong emphasis on practical experience and skills gained through practicum placements.

For more information about these courses, please refer to the [2013 Postgraduate Health Study Area Booklet](#) or visit deakin.edu.au/postgrad.

Course name	Course code	Years full time	Campus	Trimester intake options ²	Indicative 2012 annual fee FT ¹
Health					
Graduate Certificate of Agricultural Health and Medicine	H522	1 PT	X	T1	New course, fee unavailable
Graduate Certificate of Diabetes Education	H520	1 PT	X ⁶	T2	\$8985 (FPP) \$2825 (CSP)
Graduate Certificate of Health Promotion	H515	1 PT	B X ⁶	T1	\$9420
Graduate Diploma of Health Promotion	H615	1	B X ⁶	T1	\$19 010
Master of Health Promotion	H749	1.5	B X	T1	\$19 090 (FPP) \$8050 (CSP)
Master of Public Health	H747	1.5	B ⁶	T1, T2	\$19 020 (FPP) \$7830 (CSP)
Master of Health and Human Services Management	H746	1.5	B	T1, T2	\$19 950 (FPP)
Master of Social Work	H703	2	X	T1	\$16 410 (FPP) \$5820 (CSP)
Master of Clinical Exercise Physiology	H743	1.5	B	T1	\$16 230 (FPP) \$5650 (CSP)

Postgraduate coursework degrees

Information technology

Information technology

Deakin's postgraduate information technology courses provide a combination of leading-edge theory and technical knowledge plus hands-on practical experience to prepare you for a successful career as an IT professional in Australia and around the world.

Continual consultation with industry ensures the courses are relevant and up-to-date with workplace demand and that our program is designed to meet future industry requirements.

The program offers the flexibility to specialise in IT security, IT services, network computing, software development, in addition to obtaining a broad grounding in IT.

Networking and security

The Master of Networking and Security is an interdisciplinary course that covers the fields of network computing, information systems, cryptography, ubiquitous computing, digital forensics and law.

The course teaches the skills needed to design, maintain and manage network infrastructure and applications; to effectively secure the infrastructure, information systems and assets; and to investigate any network and information security breaches through digital forensic techniques.

For more information about these courses, please refer to the *2013 Postgraduate Information Technology Study Area Booklet* or visit deakin.edu.au/postgrad.

Course name	Course code	Years full time	Campus	Trimester intake options ²	Indicative 2012 annual fee FT ¹
Information technology					
Information technology					
Graduate Certificate of Information Technology	S578	0.5	B X	T1, T2	\$10 375
Graduate Diploma of Information Technology	S678	1	B X	T1, T2	\$20 750
Master of Information Technology	S778	1	B X	T1, T2	\$20 750
Master of Information Technology (Professional) ³	S779	1	B	T1, T2	\$20 750
Master of Networking and Security	S781	1	B	T1, T2	\$21 020
Graduate Certificate of Information Systems	M522	0.5 (FT T2 only)	B X	T1, T2	\$10 375
Graduate Diploma of Information Systems	M622	1	B X	T1, T2, T3	\$20 750
Master of Information Systems	M722	1.5	B X	T1, T2, T3	\$20 790
Information technology combined courses					
Master of Information Technology/ Master of Business Administration (International)	D754	2	B X	T1, T2	\$21 130
Master of Information Technology/Master of Commerce	D750	2	B X	T1, T2	\$21 400
Master of Information Technology/ Master of Information Systems	D751	2	B X	T1, T2	\$20 750

KEY

- 3** Course duration in years
- PT** Part time
- B** Melbourne Burwood Campus
- F** Geelong Waterfront Campus
- G** Geelong Waurin Ponds Campus
- W** Warrnambool Campus
- X** Off campus

Medicine

As a Deakin medical student you will gain a comprehensive understanding of the practice of medicine, with an emphasis on the early development of clinical, communication and procedural skills; diagnosis and management of chronic diseases; and multidisciplinary teamwork.

The innovative Bachelor of Medicine Bachelor of Surgery is a unique, four-year, graduate-entry program. The course aims to improve the health and wellbeing of rural and regional Australians by training doctors who are skilled and motivated to pursue a career in medicine in rural and regional areas either as specialists or general practitioners.

Industry accreditation and professional recognition

Deakin's Bachelor of Medicine Bachelor of Surgery is accredited by the Australian Medical Council (AMC). Graduates who satisfactorily complete an accredited intern year following successful completion of this course will qualify as registered medical practitioners in Australia and New Zealand.

Meeting workforce demands

There is currently a significant medical workforce shortage throughout Australia, particularly in rural, regional and outer metropolitan locations. Our graduates are in high demand for internships in Victoria and other states, and well prepared to enter specialty training programs in all areas of medicine, as well as work in a wide range of hospital or ambulatory settings in Australia or overseas.

Pathways to medicine

Several undergraduate programs at Deakin provide pathways into Deakin's graduate-entry medicine program. Deakin offers a full range of health disciplines including nursing, optometry, public health and health promotion, health sciences, dietetics, occupational therapy, psychology, exercise science and biomedical science.

For more information about these courses, please refer to the *2013 Medicine Study Area Booklet* or visit deakin.edu.au/postgrad.

Course name	Course code	Years full time	Campus	Trimester intake options ²	Indicative 2012 annual fee FT ¹
Medicine					
Bachelor of Medicine Bachelor of Surgery	H311	4	G	S1 ⁷	\$9430

GRADUATE SNAPSHOT



Patrick Renshaw
Bachelor of Medicine Bachelor of Surgery
Geelong Waurin Ponds Campus

'Before studying medicine, I was working as a physiotherapist. Although this career was enjoyable and challenging, I always wanted to be a doctor. I commenced my medicine course at the age of 27. The challenge of medicine is that it has so many differing fields and is constantly evolving. The course has a rural practice focus and a very practical approach, and the School's facilities are excellent. There is a good spread of sciences and social sciences with a focus on both rural and indigenous medicine, and the Faculty staff are very helpful, enthusiastic and flexible.'



Postgraduate coursework degrees

Nursing and midwifery

Diabetes education

The incidence of diabetes is rising in Australia and is likely to remain a major threat to public health. Deakin University's Graduate Certificate of Diabetes Education prepares health professionals for specialty practice in diabetes education.

Nursing

Deakin's postgraduate nursing courses are designed to prepare registered nurses to meet contemporary challenges in advanced practice and specialist fields of nursing. The Master of Nursing Practice is designed to allow you to choose from a range of study pathways that support your career aspirations in nursing management and leadership, advanced clinical practice and the specialty practice areas of cardiac care, critical care, emergency care, intensive care and perioperative nursing.

The Master of Nursing Practice (Nurse Practitioner) course aims to extend the scope of practice of registered nurses, as well as broaden and deepen theoretical knowledge as it relates to specialty practice settings. This course contains core units of study to support application for endorsement as a nurse practitioner by the Nursing and Midwifery Board of Australia.

These courses respond to the demands of industry and partnership/ collaborating hospitals for nurses with sophisticated specialty skills and knowledge, and have a strong focus on leadership, quality and risk management.

Midwifery

The Master of Midwifery (equivalent to 12 credit points of study) is designed to prepare you to meet contemporary challenges within the discipline of midwifery and equip you with the knowledge and skills for expanded practice roles. This course is available for registered nurses and provides opportunities to develop midwifery practice skills through integration of theory and clinical competencies in supervised placements in maternity services.

Following successful completion of both academic and practice requirements for 8 credit points of study, individuals are eligible to apply to Australian Health Practitioners Regulations Agency through the Nursing and Midwifery Board of Australia, for registration as a 'midwife'. For a further 4 credit points of study midwives can complete the Master of Midwifery through either course work or project work (minor thesis) equivalent to 20 000 words. This course is also available for midwives wishing to upgrade their midwifery qualification from a hospital certificate course. A program of study (equivalent to 4 credit points of study) is contained within the Master of Midwifery for those who wish to return to midwifery practice.

For more information about these courses, please refer to the [2013 Postgraduate Nursing and Midwifery Study Area Booklet](#) or visit deakin.edu.au/postgrad.

Course name	Course code	Years full time	Campus	Trimester intake options ²	Indicative 2012 annual fee FT ¹
Nursing and midwifery					
Graduate Certificate of Diabetes Education	H520	1 PT	X ⁶	T1	\$8985 (FPP)
Master of Midwifery	H776	1.5	X	T1 ⁹	\$17 970
Master of Nursing Practice	H771	1.5	X	T1	\$17 850 (FPP) \$5710 (CSP)
Master of Nursing Practice (Nurse Practitioner)	H773	1.5	X	T1 ⁹	\$17 970 FPP

GRADUATE SNAPSHOT



Debra Daniels
Master of Nursing Practice
(Nurse Practitioner)
Off campus

'I currently work in a rural emergency department and I feel this is the appropriate path for me to advance my career further and provide me with greater fulfillment. The School of Nursing and Midwifery staff have been extremely helpful. They provided me with direction and assisted me with my return to study. It has been many years since I have undertaken any study at this level and the staff have been more than happy to assist me in whatever way they could.'



KEY**3** Course duration in years**PT** Part time**B** Melbourne Burwood Campus**F** Geelong Waterfront Campus**G** Geelong Warrnambool Campus**W** Warrnambool Campus**X** Off campus

Nutrition and dietetics

Nutrition

Deakin's nutrition courses provide opportunities to learn about nutrition in a broad context, ranging from metabolic studies and food science to social and behavioural nutrition. Throughout these courses you will develop an understanding of the role of nutrition and diet in the health of individuals and groups.

You may be interested in Deakin's nutrition courses if you are working in areas as diverse as agriculture, biological and health sciences, food science and technology, exercise and sport sciences, mass communication, physiotherapy, naturopathy, dentistry, medicine, nursing or pharmacy; or if you are teaching subjects such as home economics, biology or physical education.

Dietetics

Deakin was the first university to offer a course in dietetics in Australia and has been proudly offering Dietitians Association of Australia (DAA) accredited courses for more than 30 years.

Deakin's Master of Dietetics is a three-trimester professional training program that builds on your undergraduate knowledge in nutrition, physiology and biochemistry, to develop skills in dietary management in both health and disease. Professional practice placements provide you with hands-on experience in clinical, community and food service settings. You will also develop research and communication skills through industry-based group electives and projects.

Public health nutrition

A career in public health nutrition addresses factors affecting the protection and promotion of public health and nutritional health today, and into the future. Deakin's Graduate Certificate of Public Health Nutrition introduces you to public health nutrition and covers material from related disciplines such as epidemiology, politics and policy, nutrition promotion and communication to provide you with core competencies to tackle these relevant public health and nutrition issues.

For more information about these courses, please refer to the *2013 Postgraduate Nutrition and Dietetics Study Area Booklet* or visit deakin.edu.au/postgrad.

Course name	Course code	Years full time	Campus	Trimester intake options ²	Indicative 2012 annual fee FT ¹
Nutrition and dietetics					
Graduate Certificate of Human Nutrition	H511	1 PT	X	T1, T2	\$11 025
Graduate Diploma of Human Nutrition	H616	1	X	T1, T2	\$22 070
Master of Human Nutrition	H714	1.5	X	T1, T2	\$22 010
Graduate Certificate of Public Health Nutrition	H517	0.5	X	T1, T2	\$10 985
Master of Dietetics	H718	1.5	B	T1	\$21 990



GRADUATE SNAPSHOT



Hannah Grant
Master of Human Nutrition, Deakin University, 2010
Off campus
Employed: Early Childcare and Development Facilitator (Nutrition), World Vision Australia

'Deakin offered a versatile learning environment, high-quality lecturers, and broad and adaptable units that allowed me to learn what was relevant to my future career. I was able to study full time whilst working and I had access to professors who were top of their field and contributing to current research in nutrition. I now work in three communities in far north-west Western Australia where I help facilitate community development based around the health and wellbeing of 0–4 year-old children.'

Postgraduate coursework degrees

Optometry

Based at the Geelong Waurn Ponds Campus, Deakin's optometry program is the only program of its kind in Victoria. Offered as two sequential degrees, the Bachelor of Vision Science and Master of Optometry, this program can be completed in three-and-a-half years of full-time study and leads to registration as an optometrist – the primary healthcare professional involved in detection and management of eye disease, dispensing corrective lenses, and rehabilitation of conditions of the visual system.

Optometry at Deakin provides you with a comprehensive understanding of the practise of optometry, with strong foundations in science, interprofessional health practice, practice management and commercial awareness, so that graduates are well equipped for a variety of employment opportunities. The course has an emphasis on patient-centred, problem-based learning approaches that enable you to develop the knowledge and practical skills to confidently practise as a professional optometrist.

The holistic approach to the course design ensures the curriculum offered throughout these sequential degrees is aligned to the competencies defined by the Optometry Council of Australia and New Zealand (OCANZ) – the accrediting body for optometry courses in Australia and New Zealand. Subject to accreditation, which will be sought when the first cohort of students graduate in mid-2015, graduates will be eligible to apply for registration with the Australian Health Practitioner Regulation Agency (AHPRA), and as Medicare service providers, and will be able to embrace employment opportunities throughout Australia and New Zealand.

For more information about these courses, please refer to the [2013 Optometry Study Area Booklet](#). or visit deakin.edu.au/postgrad.

Course name	Course code	Years full time	Campus	Trimester intake options ²	Indicative 2012 annual fee FT ¹
Optometry					
Bachelor of Vision Science	H310	2	G	T1	\$7110 (CSP)
Master of Optometry*	H710	1.5	G	T1	New course, fee unavailable

* Planned to commence in 2014.



ACADEMIC SNAPSHOT



Associate Professor Craig Woods
 Director of Optometric Clinical Studies
 Geelong Waurn Ponds Campus

Craig Woods is the Director of Optometric Clinical Studies and an Associate Professor of Optometry at Deakin. He is also Adjunct Associate Professor, School of Optometry, University of Waterloo (Canada); Secretary of the International Society for Contact Lens Research; and a member of the editorial boards for the journals Contact Lens and Anterior Eye, and Eye and Contact Lens. He graduated in optometry from City University (London, UK) and was awarded his PhD while at Eurolens Research at the University of Manchester Institute of Science and Technology. He has authored more than 90 refereed and professional papers, 11 textbook chapters and presented nearly 300 presentations at conferences worldwide.

KEY

- 3** Course duration in years
- PT** Part time
- B** Melbourne Burwood Campus
- F** Geelong Waterfront Campus
- G** Geelong Waurin Ponds Campus
- W** Warrnambool Campus
- X** Off campus

Psychology

Deakin’s School of Psychology is one of the largest in Victoria, offering courses from undergraduate through to doctoral levels.

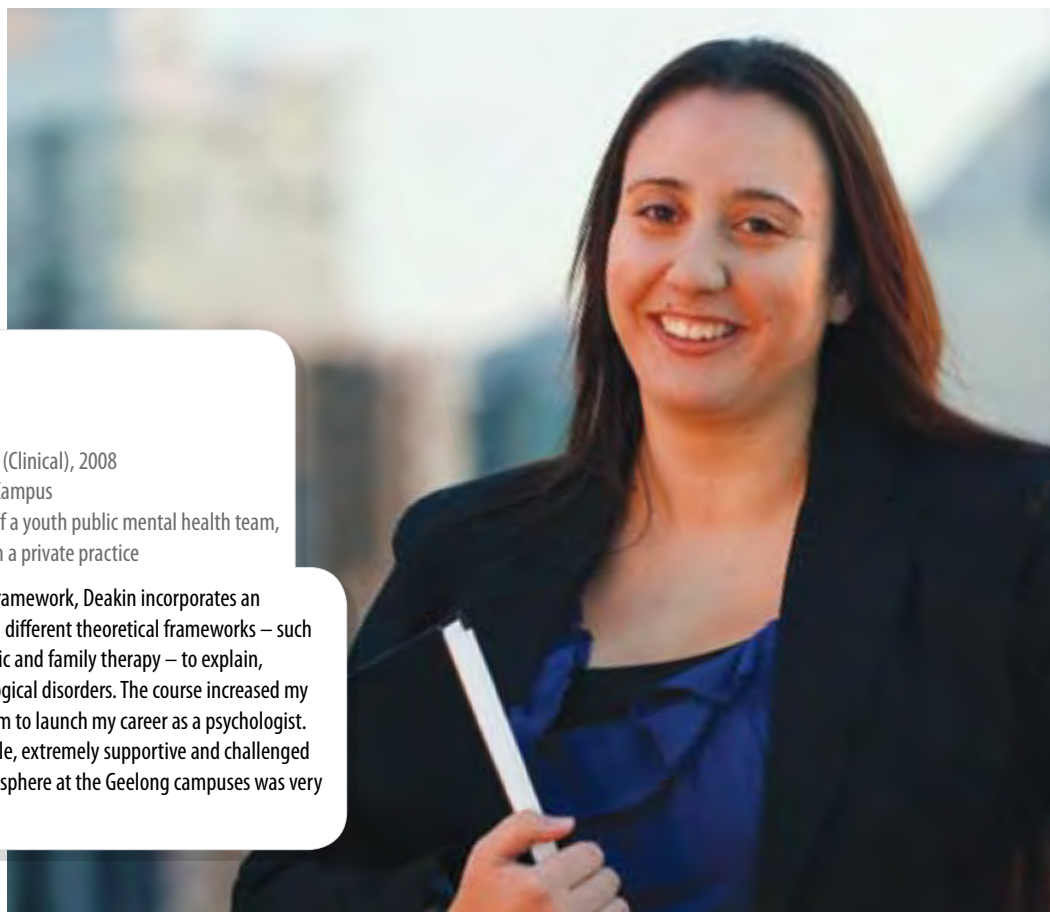
The current requirements for registration as a provisional psychologist include the completion of four years of academic study of psychology in a course recognised by the Psychology Board of Australia (PBA). The academic program usually consists of an approved three-year undergraduate psychology sequence, followed by an approved ‘fourth year’ of study, such as Deakin’s Graduate Diploma of Psychology or honours in psychology.

Deakin’s Graduate Diploma of Psychological Studies provides the equivalent of an undergraduate sequence in psychology that is modified for delivery at postgraduate level. Following successful completion of the course plus either the Graduate Diploma of Psychology or honours in psychology, you may apply for provisional registration with the Psychology Board of Australia (PBA) and associate membership of the Australian Psychological Society.

In order to gain full registration, provisional psychologists must then complete either two years of supervised practice, or a minimum of two years of further study, which may include a Master of Psychology, Doctor of Psychology or a Doctor of Philosophy (PhD).

For more information about these courses, please refer to the *2013 Postgraduate Psychology Study Area Booklet* or visit deakin.edu.au/postgrad.

Course name	Course code	Years full time	Campus	Trimester intake options ²	Indicative 2012 annual fee FT ¹
Psychology					
Graduate Diploma of Psychological Studies	H653	1	B G W X	T1, T2, T3	\$20 380
Graduate Diploma of Psychology	H650	1	B F	T1	\$20 380
Master of Psychology (Clinical)	H750	2	F	T1	\$20 960 (FPP) \$5650 (CSP)
Master of Psychology (Industrial and Organisational)	H752	2	B	T1	\$20 380



GRADUATE SNAPSHOT



Michelle Zarafa
 Master of Psychology (Clinical), 2008
 Geelong Waterfront Campus
 Employed: Member of a youth public mental health team, Barwon Health and in a private practice

‘Unlike focusing upon one theoretical framework, Deakin incorporates an integrative approach which draws upon different theoretical frameworks – such as cognitive behavioural, psychodynamic and family therapy – to explain, understand and treat different psychological disorders. The course increased my confidence and gave me a great platform to launch my career as a psychologist. The lecturers were highly knowledgeable, extremely supportive and challenged me to give my best efforts . . . the atmosphere at the Geelong campuses was very conducive to learning.’

Postgraduate coursework degrees

Science and environment



Biotechnology

Biotechnology covers molecular biology, human and animal health, pharmaceuticals environment, agriculture, medical devices, nanotechnology and related sciences and manufacturing, together with the associated business, regulatory, and intellectual property skills.

Deakin's postgraduate biotechnology program responds to the demand for multi-skilled biotechnologists in Australia and overseas, equipping you with a thorough understanding of the very latest techniques and developments biotechnology.

You will benefit from the state-of-the-art facilities and cutting-edge research at the Geelong Technology Precinct. You will undertake broad studies that cover biopharmaceuticals, drug development and clinical trials, medical devices, medical biotechnology, stem cells, regenerative medicine, applied agricultural biotechnology, food biotechnology, bio-processing, industrial biotechnology, environmental biotechnology, nanotechnology, frontier techniques in biotechnology including RNAi and Microarray, global and Australian regulatory schemes, intellectual property laws and commercialisation, venture capital and capital raising.

The program's distinctive blend of applied science and management-focused units ensures graduates are highly employable, and able to work in industrial, innovative, regulatory, emerging and commercial biotechnology sectors.

Environmental management

Offered as a specialisation within the Master of Applied Science, environmental management involves a multi-disciplinary approach to examining why impacts on the environment occur and developing appropriate solutions to managing these impacts. Approaches to environmental management today tend to be based on the concept of the 'triple bottom line', being the management of the environmental, social and economic issues.

Balancing resources and employment against environmental impacts requires specialist skills and knowledge. Environmental managers need to be able to understand government policy direction, legislative compliance issues and to analyse risk to the environment.

Occupational hygiene

Offered as a specialisation within the Master of Applied Science, occupational hygiene is concerned with the recognition, evaluation and control of workplace factors that may result in illness, impaired health and wellbeing, or significant discomfort and inefficiency amongst workers.

These factors include toxic chemicals, ionising and non-ionising radiation, noise and vibration, heat and cold stress, as well as ergonomic and psychological factors.

Sustainable water management

Managing our water resources and working effectively as a sustainable water management professional requires an understanding of the complex, interdisciplinary aspects of the field.

This program addresses the complex, interdisciplinary aspects of managing water resources by helping you to integrate the biological and physical sciences with engineering. You'll gain an understanding of cutting-edge developments in water and wastewater treatment processes, water supply and sewerage infrastructure, and water recovery and re-use.

KEY

- 3** Course duration in years
- PT** Part time
- B** Melbourne Burwood Campus
- F** Geelong Waterfront Campus
- G** Geelong Waurm Ponds Campus
- W** Warrnambool Campus
- X** Off campus

Natural and cultural resource management

The Graduate Diploma of Natural and Cultural Resource Management provides the knowledge and skills for Aboriginal and Torres Strait Islander specialists who work in, or intend to work in the areas of: Aboriginal and Torres Strait Islander land management, cultural heritage protection and management, research, project management, caring for country policy, environmental policy analysis and issues of sustainability. The course is designed to increase knowledge and skills in interpreting significance, cultural mapping, developing techniques for collaboration in the natural and cultural resource management arena, analysing policy, researching for land management and creating frameworks for sustainability.

The course is taught through Deakin University's Institute of Koorie Education located at the Geelong Waurm Ponds Campus. The Institute of Koorie Education offers the course under the community-based mode of delivery whereby you attend three one-week long intensives per trimester and stay at the Kitjarra Residences. During that time, lectures, workshops and field trips are delivered. You also study in your own community with online and telephone support.

For more information about these courses, please refer to the [2013 Postgraduate Science and Environment Study Area Booklet](#) or visit deakin.edu.au/postgrad.

GRADUATE SNAPSHOT



Vengamanaidu Modepalli
 Master of Biotechnology (Honours), 2010
 Currently studying: PhD
 Geelong Waurm Ponds Campus

'I joined Deakin to pursue a masters degree in biotechnology. While I was doing my research I decided to extend my knowledge by undertaking a PhD. There are many reasons why I chose Deakin. It has a strong spotlight on research and development and provides great opportunities for research degree students by providing scholarships. Deakin is also performing its research in broad areas and extending with great progress. It also has the best library with wide access to a number of books and e-journals. Deakin is the place to fulfil your aim in research and it is the best place to be a research student.'



Course name	Course code	Years full time	Campus	Trimester intake options ²	Indicative 2012 annual fee FT ¹
Science and environment					
Graduate Certificate of Applied Science specialisms in environmental management, occupational hygiene, and sustainable water management	S505	0.5	G X	T1, T2	\$11 790
Master of Applied Science specialisms in environmental management, occupational hygiene, and sustainable water management	S705	1.5	G X	T1, T2	\$24 000
Graduate Diploma of Natural and Cultural Resource Management	S662	1	G X	T1, T2	\$6 890 (CSP) \$24 280 (FPP)
Graduate Certificate of Biotechnology	S572	0.5	G	T1, T2	\$12 615
Master of Biotechnology	S772	1	G	T1, T2	\$24 220
Master of Biotechnology (Honours)	S771	2	G	T1, T2	\$25 050

Research that makes a difference

Universities are all about knowledge – creating, discovering, analysing, sharing and dispersing knowledge. Research is at the core of these activities and helps to make Deakin University a vibrant place to study.

At Deakin we take pride in being relevant to students and to their communities, not just in the courses we teach, but in the research we undertake.

Whether you want to study engineering, law, politics, education, psychology, medicine, health or in another field, studying at a university that is committed to research that matters means that you have the opportunity to learn from people who are making a real difference in the world. This is important, regardless of whether or not you want to pursue a research career, because it means that you will graduate with the latest knowledge in your chosen field.

Deakin received the top ranking of 5 in the recent Excellence in Research for Australia (ERA) rankings, in materials engineering, medical physiology, human movement and sports sciences and zoology.

Deakin's research is partnership based, both locally, nationally and internationally. Our academic and research staff are highly regarded and are at the cutting edge in their fields. Research students are provided with excellent support and fantastic experiences. Most have opportunities to work with partner collaborators nationally and internationally, present at international conferences and use world-class facilities within Australia and abroad. The addition of a Medical School to Deakin University has broadened the scope of the University's research activities. In October 2011, Deakin received 12 National Health and Medical Research Council grants, the highest Deakin has ever received, with this number expected to grow in the future.

At the centre of Deakin's research strengths are its leading edge research facilities, institutes and centres:

- » Institute of Frontier Materials (IFM)
- » Centre for Intelligent Systems Research (CISR)
- » Alfred Deakin Research Institute (ADRI)
- » Centre for Comparative Social Research (CCSR)
- » Centre for Memory, Imagination and Invention (CMII)
- » Centre for Mental Health and Wellbeing Research (CMHWR)
- » Centre for Physical Activity and Nutrition Research (C-PAN)
- » Centre for Research in Educational Futures and Innovation (CrEFI)
- » Centre for Sustainable and Responsible Organisations (CSaRO)
- » Centre for Quality and Patient Safety Research (QPS)
- » Centre for Integrative Ecology (CIE)
- » Molecular and Medical Research (MMR)
- » Pattern Recognition and Data Analytics (PRaDA)
- » Population Health (DPH)
- » Centre for Biotechnology, Chemistry and Systems Biology (BCSB)
- » PRaDA, Pattern Recognition and Data Analytics.

Deakin researchers continue to inspire the community with recent discoveries in relevant areas such as:

- » obesity and its prevention in the 21st century
- » mental and population health
- » advanced materials and emerging fibres, particularly carbon fibre composites, that will play a role in providing an environmentally sustainable future, and lightweight metals.

The University's Medical School also plays an important role in enhancing Deakin's research reputation in public health. Another central component to Deakin's innovative work in health and wellbeing is the Clinical Research Facility. This is a multipurpose area capable of supporting both discrete discipline and multidisciplinary activity.

To discover more about Deakin's research strengths, please visit deakin.edu.au/research.

More information

Deakin Research

Phone: 03 9251 7124

research-hdr@deakin.edu.au

deakin.edu.au/future-students/research



Research degrees

Faculty of Arts and Education

Course name course code	Years full time and campus
Arts	
Master of Arts A800	2 B G W X
Doctor of Philosophy A900	3 - 4 B G W X
Education	
Master of Arts E850	1 - 2 B G X
Doctor of Philosophy E900	3 - 4 B G X

Research areas

Within the Faculty of Arts and Education, each School offers research opportunities in the following areas:

School of Communication and Creative Arts

Affect theory; children's literature; communication studies; contemporary arts theory, collaborative arts and professional practice; corporate citizenship; communication studies; cultural studies and policy; dance; drama; digital culture and interactive media; journalism; linguistics and applied linguistics; literary studies; media and communication; media arts; persona studies; post colonial literature studies; professional writing; public relations; visual arts; visual communication.

School of Humanities and Social Sciences

Anthropology; Arabic language and culture studies; Asian studies; Australian studies; Chinese language and culture studies; community development; criminology and police studies; cultural heritage and museum studies; gender studies; history; Indonesian language and culture studies; international development studies; international relations studies; Middle East studies; philosophy; politics and policy studies; psychoanalytic studies; sociology.

School of Education

Action research and program evaluation; governance and policy; literacy/ies; teacher education; pedagogy; curriculum; science and environmental education; technologies and futures; internationalisation and international schooling; wellbeing; identity/ies and gender; teacher professional learning; health, sport and physical education; mathematics education; applied learning; arts education; early childhood education; TESOL/LOTE.

More information

Research Degrees Administrative Officer

Phone: 03 5227 2226

artsed-research@deakin.edu.au

deakin.edu.au/arts-ed/research/programs

For more information about these courses, please refer to the *2013 Postgraduate Arts and Education Study Area Booklet* or visit deakin.edu.au/postgrad.

Note: Please refer to page 15 for information about fees for these courses.

KEY

- 3** Course duration in years
- PT** Part time
- B** Melbourne Burwood Campus
- F** Geelong Waterfront Campus
- G** Geelong Waurin Ponds Campus
- W** Warrnambool Campus
- X** Off campus

GRADUATE SNAPSHOT



Julie Rowlands
 Bachelor of Education
 Master of Education
 PhD candidate
 Warrnambool Campus
 Now: Lecturer, School of Education, Deakin University

'When I completed my Master of Education I found that having a postgraduate degree was a great help in my career in terms of the knowledge, skills and confidence I had gained ... also the formal qualification assisted me to obtain more senior positions. I very much feel part of a community of researchers and scholars and am extremely grateful for the encouragement and assistance I have received. I have been particularly fortunate to have been given many opportunities during the course of my candidature ... and I have learnt an enormous amount from these experiences. I feel very privileged to have had this opportunity.'



Research degrees



Faculty of Business and Law

Course name course code	Years full time and campus
Master of Commerce M800	2 G B X
Master of Economics M801	2 B G W X
Doctor of Philosophy M900	3 - 4 B W X
Master of Laws (Major Thesis) M810	1.5 B X

Research areas

Within the Faculty of Business and Law, each School offers research opportunities in the following areas:

Deakin Graduate School of Business

Auditing and assurance; brand value; business strategy; capital markets; corporate governance and ethics; customer behaviour; customer relationship management (CRM); economic development; electronic business; employment relations management; financial reporting; game theory; human resource management; industrial organisation; international economics; IT strategy and governance; labour hire; marketing research; occupational health and safety; organisational health; organisational theory; outsourcing and vendor-client relationships; regional development; small business; and trade and industrial organisation.

School of Accounting, Economics and Finance

Accounting education; banking; capital markets; control of international strategic alliances; corporate finance; finance event studies; financial markets; financial planning; financial reporting; management accounting; initial public offerings; political economy; social and environmental accounting; stock trading and analysis; risk management; economic development; corporate governance and ethics; quality and reform issues; environmental and resource economics; international economics; labour economics; macro-economics; and econometrics.

School of Law

Commercial law; company law; human rights and international law; law of health and medicine; and taxation law.

School of Management and Marketing

Arts and entertainment management; change management; sport management; human resource management; industrial and labour relations; marketing; and management.

School of Information Systems

Computer based training and multimedia; electronic business/internet commerce; information technology management and strategy; organisational impact of information systems; requirements engineering; systems development methodology; virtual communities and organisation; information security management; knowledge management; and supply chain management.

More information

Faculty of Business and Law
Phone: 03 5227 2442
research-buslaw@deakin.edu.au
deakin.edu.au/buslaw/research

For more information about these courses, please refer to the *2013 Postgraduate Business and Law Study Area Booklet* or visit deakin.edu.au/postgrad.

Note: Please refer to page 15 for information about fees for these courses.

KEY

- 3 Course duration in years
- PT Part time
- B Melbourne Burwood Campus
- F Geelong Waterfront Campus
- G Geelong Waurin Ponds Campus
- W Warrnambool Campus
- X Off campus

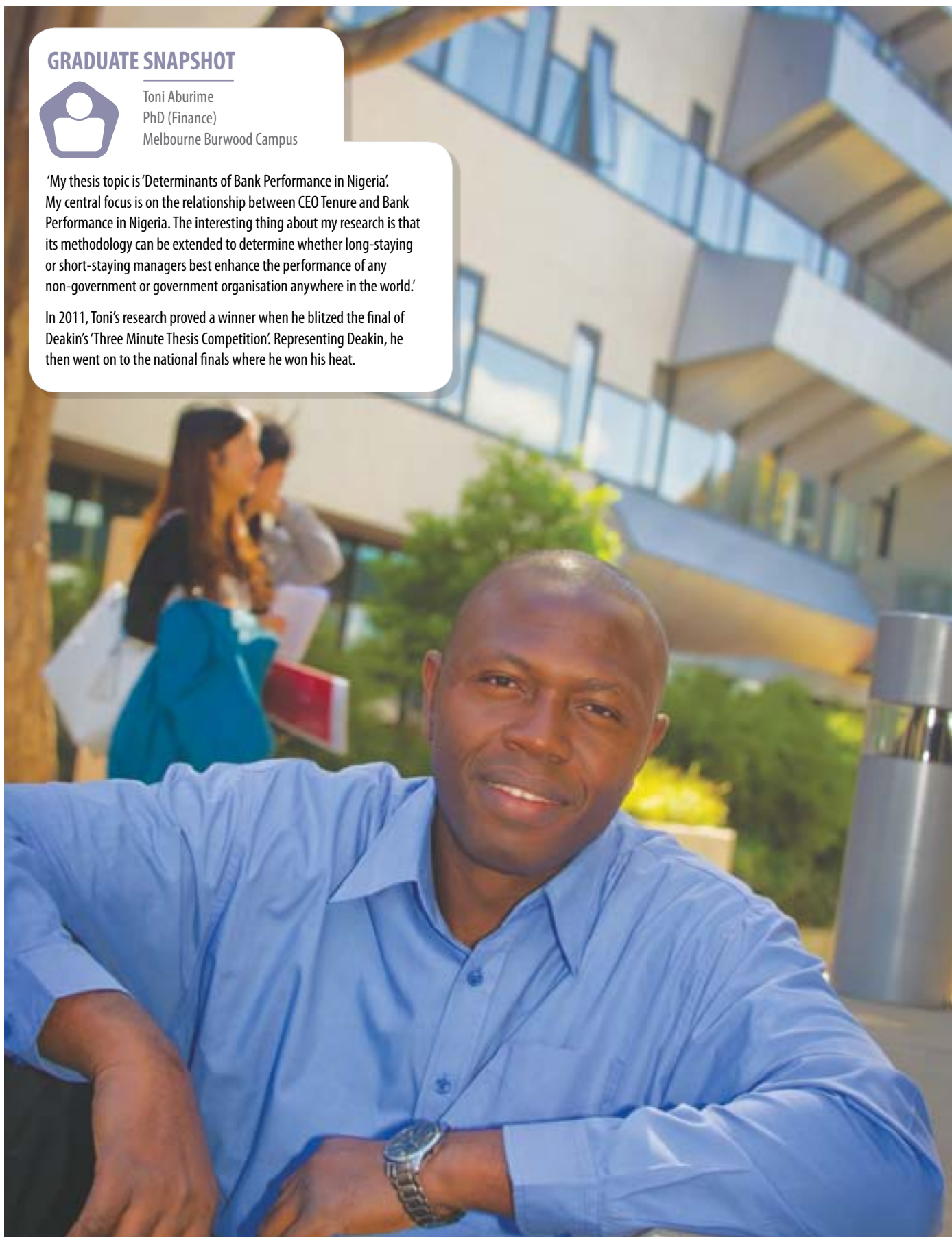
GRADUATE SNAPSHOT



Toni Aburime
PhD (Finance)
Melbourne Burwood Campus

'My thesis topic is 'Determinants of Bank Performance in Nigeria'. My central focus is on the relationship between CEO Tenure and Bank Performance in Nigeria. The interesting thing about my research is that its methodology can be extended to determine whether long-staying or short-staying managers best enhance the performance of any non-government or government organisation anywhere in the world.'

In 2011, Toni's research proved a winner when he blitzed the final of Deakin's 'Three Minute Thesis Competition'. Representing Deakin, he then went on to the national finals where he won his heat.



Research degrees

Faculty of Health

Course name course code	Years full time and campus
Exercise	
Master of Arts H816	1 – 2 B G F X
Master of Applied Science H817 population health (public health), epidemiology, dietetics and sport coaching	1 – 2 B F X
Master of Applied Science H842 human biology (physiology), biotechnology, food sciences and exercise sciences	2 B G F X
Doctor of Philosophy H910 H940	3 – 4 B G F X
Health	
Master of Arts H830 public health, health promotion, evaluation and health impact assessment, public health policy, rural health, health and the environment, social determinants of health, disability, social work, occupational therapy, community health	1 – 2 B G F X
Master of Applied Science H831 health and social development® H831	1 – 2 B F X
Master of Social Work H803	2 X
Doctor of Philosophy H930	3 – 4 B G X
Medicine	
Master of Applied Science H860	2 G X
Master of Applied Science H861	2 G X
Doctor of Philosophy H960	3 – 4 B G X
Doctor of Philosophy H961	3 – 4 G X
Nursing and midwifery	
Master of Applied Science H822	1 – 2 B F X
Master of Nursing H821	1 – 2 B F W X
Doctor of Philosophy H920	3 – 4 B F W X
Nutrition sciences	
Master of Arts H816 exercise science/sport, physical activity and nutrition	1 – 2 B G F X
Master of Applied Science H817 population health (public health), epidemiology, dietetics and sport coaching	1 – 2 B G F X
Master of Applied Science H842 human biology (physiology), biotechnology, food sciences and exercise sciences	1 – 2 B G F X
Doctor of Philosophy H910 H940	3 – 4 B G F X
Psychology	
Master of Applied Science H852	1 – 2 B F W X
Master of Arts H851 health psychology and quality of life, human sexuality and relationships, human factors such as auditory and visual perception, clinical and forensic psychology	1 – 2 B F W X
Master of Science H850	1 – 2 B F W
Doctor of Philosophy H950	3 – B W
Doctor of Psychology (Clinical) H951*	3
Doctor of Psychology (Forensic) H952*	3
Doctor of Psychology (Health) H953*	3

* Applications for these courses must be received by 31 October 2012.

@ Including public health, health promotion, disability, social work, occupational therapy and community health.

KEY

- 3** Course duration in years
- PT** Part time
- B** Melbourne Burwood Campus
- F** Geelong Waterfront Campus
- G** Geelong Waurin Ponds Campus
- W** Warrnambool Campus
- X** Off campus

Faculty of Health

Research areas

The Faculty of Health offers research opportunities in the following areas:

Disability

Equity and access issues and the nature of disability in the areas of employment, telecommunications and assistive technologies; the law; community living; and evaluation of services.

Exercise and sport science

Physical activity and health; exercise and behaviour; muscle and bone metabolism; movement analysis; neural control of muscle in health and disease; musculoskeletal rehabilitation; and athlete and sport performance; clinical exercise; occupational exercise science; health and sport coaching.

Food and nutrition science

Measurement and evaluation of food sources of nutrients; impact of nutrient intake on disease risk; sensory evaluation of taste and its influence on diet; nutritional assessment; epidemiology and population health; public health policy; diet and disease relationships throughout the lifespan (infant/child/elderly), including a specific interest in cancer, cardiovascular disease, lipidology, obesity, diabetes, osteoporosis, gut health; molecular nutrition; food formulation, chemical evaluation of food and substantiation of health benefits of functional foods.

Health

Health promotion; health economics; program evaluations; public health policy; community interventions; obesity prevention; diabetes; osteoporosis; rural health; health and the environment encompassing sustainability, decision-making and community involvement; social determinants of health in which the focus is on equity, gender, ethnicity and inequality.

Medicine

Rural and regional general practice; health and wellbeing; chronic disease.

Nursing and midwifery

Safety, quality and equity of health care; minimising clinical risks; symptom management; workforce development; and advancing evidence-based policy and practice in acute, aged and community settings.

Occupational science and therapy

Early childhood intervention, specific learning disabilities, developmental coordination disorders, and social adaptive behaviour.

Psychology

Clinical, health and forensic psychology; social and mental health; adolescent health; risk behaviours, body image and disordered eating; drugs and alcohol; eye-witness testimony; treatment of offenders; human sexuality; healthy ageing and depression among older people; disability; quality of life; relationships; human factors such as auditory and visual perception; and organisational psychology in health care settings.

Public health

Nutrition, physical activity and population health; public health and social/cultural aspects of health; health economics and program evaluation; international health; health and human services systems; epidemiology and population health; behavioural epidemiology.

Social work

Social work theory and practice; critical social work; evidence bases in social work; social work education; human services provision; child and family welfare; mental health; diversity and inclusivity; masculinities; religion and spirituality; gender relations and gender violence.

More information

Faculty of Health
 Phone: 03 9251 7174
hmnbs-research@deakin.edu.au
deakin.edu.au/hmnbs/research

Note: Please refer to page 15 for information about fees for these courses.

GRADUATE SNAPSHOT



Louise Phillips
 Currently: PhD – School of Health
 and Social Development
 Melbourne Burwood Campus

'My PhD is set in accommodation services for people with intellectual disability. I want to find out how support workers interpret and implement various policies and procedures relating to supporting residents who may exhibit challenging behaviour.'

I completed my undergraduate course at Deakin many years ago and I always valued the lecturers' underlying philosophy of valuing and respecting all people, including those with intellectual disability – I chose to undertake postgraduate studies at Deakin because of this kinship.'



Research degrees

Faculty of Science and Technology

Course name course code	Years full time and campus
Architecture and construction	
Master of Architecture (Research) S800	1-2 F X
Master of Construction Management (Research) S805	1-2 F X
Doctor of Philosophy S917	3-4 F X
Biological, biomedical and chemical science	
Master of Science S811	1-2 B G X
Doctor of Philosophy S911	3-4 B G X
Engineering	
Master of Engineering S825	2 G X
Doctor of Philosophy S915	3-4 G X
Environment	
Master of Science S810	1-2 B G W X
Doctor of Philosophy S910	3-4 B G W X
Information technology	
Master of Science S813	1-2 B G X
Doctor of Philosophy S913	3-4 B G X

Research areas

The Faculty of Science and Technology offers research opportunities in the following areas:

Architecture and building

Architectural sustainability; urban and regional ecologies; cultural ecologies; construction ecologies.

Engineering

Advanced materials and manufacturing; automotive engineering; biological micro electro mechanical systems; networked sensing and control; signals and systems; sustainable water management; structural engineering.

Information technology

Information security and forensics; network computing; optimisation, computational intelligence and learning from data; pervasive and service computing.

Life and environmental sciences

Biodiversity, bioinformatics, biomolecular sciences, biotechnology, cell biology; chemistry and forensic sciences; ecology; ecophysiology, sensory ecology and behaviour; zoology; plant sciences; environmental management and sustainability, evolutionary biology, marine and freshwater science; palaeobiology and global change; wildlife and landscape ecology.

More information

Faculty of Science and Technology
 Phone: 03 5227 2270 or 03 5227 2134
scitech-research@deakin.edu.au
deakin.edu.au/scitech/research

Note: Please refer to page 15 for information about fees for these courses.

KEY

- 3** Course duration in years
- PT** Part time
- B** Melbourne Burwood Campus
- F** Geelong Waterfront Campus
- G** Geelong Waurin Ponds Campus
- W** Warrnambool Campus
- X** Off campus

GRADUATE SNAPSHOT



Belinda Christie
 Bachelor of Environmental Science
 (Environmental Management), 2008
 Bachelor of Environmental Science (Honours), 2009
 Currently: PhD Melbourne Burwood Campus

'Deakin was the only place I could find with an emphasis on environmental management and sustainability. I wanted a macro view of the world. Deakin recognises the human dimensions of environmental science, allowing me to investigate sustainability and still undertake an environmental science degree.'

Research is a highly dynamic and engaging learning platform. It's the process of discovery that is most engaging. It's nice to feel like I'm making a contribution to environmental science and to my local and global community.'



Our Alumni Community

Deakin takes great pride in the achievements of its graduates throughout the world and aims to provide lifelong learning and networking opportunities for all its Alumni.

Once you complete your Deakin degree, you will be invited to become a member of our Deakin University Alumni Community to continue your relationship with the University and the networks you have developed while studying.

The Deakin University Alumni Community will enable you to keep or renew contact with your student and professional networks around the world and will help you grow your career after you leave the University. Members have access to many exclusive benefits including:

- » professional networking opportunities
- » discount library membership (free for the first year)
- » career development services
- » lifelong learning opportunities
- » online news services and social media
- » student mentoring
- » Alumni business directory
- » invitations to social events
- » company discounts.

You may even want to become involved with an Alumni chapter, based around the course you studied, the Faculty or School you studied or worked with, or your home country.

Alumni membership is free and joining is easy. For more information and to register as an alumnus, visit deakin.edu.au/alumni.



FOR MORE INFORMATION VISIT
deakin.edu.au/alumni

GRADUATE SNAPSHOT



David McAllister
Graduate Diploma of Arts and
Entertainment Management, 2000
Off campus
Employed: Artistic Director,
The Australian Ballet

'I studied at Deakin between 1999 and 2000 while I was still dancing full time with The Australian Ballet . . . I could do the study off campus while still working and touring both nationally and internationally.

After I graduated, I was appointed Artistic Director of The Australian Ballet, a position I felt more prepared to apply for having undertaken the study.

I was inspired by the wonderful facilities, especially for off-campus students like myself, and the ability to discover a deeper understanding of the arts industry from a completely different point of view.

Today I am motivated by my fellow workers in all areas of the organisation. In the future, I'd like to see the arts, and especially dance, as a central part of our Australian way of life.'



Key terms

Bachelors degree

An undergraduate award. Normally the first university qualification undertaken.

Combined courses

An approved combination of courses in complementary areas, undertaken simultaneously, leading to the conferral of two awards e.g. MBA (International)/Master of Professional Accounting. This means you will complete two degrees in a shorter timeframe than it would take to complete the degrees separately.

Commonwealth Supported Place (CSP)

A university place for which the government pays a proportion of the tuition costs. CSP students can pay up-front and receive a discount or use HECS-HELP to defer payment.

Credit for Prior Learning (CPL)

Credit granted towards your Deakin course for relevant approved study, experience or work satisfactorily completed at the University or elsewhere. There are two aspects to CPL:

- » credit may be transferred to your Deakin program from completed or partly completed studies you have undertaken at other accredited institutions; and
- » credit may be granted on the basis of knowledge and skills acquired through uncredentialed learning (such as professional experience).

Credit point

A measure of workload. Most postgraduate units are equivalent to 1 credit point.

Disability Resource Centre

The Disability Resource Centre provides a range of programs to ensure all students have the opportunity to access university education and succeed in education and employment.

EFTSL

Equivalent Full-Time Student Load is a measure of the workload a student undertakes in a full year of study. One EFTSL is equal to 8 credit points.

Faculty

An organisational division within a university; for example, the Faculty of Arts and Education is one of the four Faculties at Deakin University. Within each Faculty are several Schools, for example the School of Law is within the Faculty of Business and Law.

FEE-Higher Education Loan Program (FEE-HELP)

A loan scheme for Fee-Paying Place (FPP) students, repayable through the Australian taxation system once your annual income exceeds the minimum threshold for repayment.

Fee-Paying Place (FPP)

A place that is not subsidised by the government, so you pay the full cost of the course. As an FPP student you may be eligible to defer repayments through the Australian taxation system, through FEE-HELP. Your employer may also contribute to the cost of study if the course is related to your current position.

Graduate entry

A course that requires completion of a prior undergraduate degree for entry. Deakin's Bachelor of Medicine Bachelor of Surgery is a graduate-entry course.

Higher Education Contribution Scheme-Higher Education Loan Program (HECS-HELP)

HECS-HELP is a loan scheme to help CSP students pay for tuition costs. Repayments are made through the Australian taxation system once annual income exceeds the minimum threshold for repayment.

Off-campus study

Off-campus courses, or courses offered by distance education, are the same as on-campus courses; the only difference is that rather than attend classes in person, you study away from campus using online technologies, study guides, reading lists and audiovisual materials.

Postgraduate degree

Courses of study beyond bachelor level, including graduate certificates, graduate diplomas, masters and research degrees (also known as higher degrees by research or HDR).

Quarter

The enrolment periods for research degree students. At Deakin University there are four quarters. Quarter 1 runs from January to March, Quarter 2 from April to June, Quarter 3 from July to September and Quarter 4 from October to December.

Student Amenities Higher Education Loan Program (SA-HELP)

SA-HELP is a loan program which was introduced in 2012 for eligible students to defer all or part of the cost of the Student Services and Amenities Fee.

Student Services and Amenities Fee

A fee that higher education providers can charge their students for services and amenities of a non-academic nature, such as sporting and recreational activities, employment and career advice, childcare, financial advice and food services, from 2012.

School

An organisational division within a Faculty. For example, the School of Medicine is one of five Schools within the Faculty of Health.

Single-subject (non-award) study

A non-award unit is a unit of study from a degree course taken outside a degree program. If successfully completed, the unit may be counted as credit towards a degree course at Deakin, subject to admission to a degree course and approval by the Faculty.

Trimester

The method of organising the teaching year. At Deakin University there are three trimesters: Trimester 1 runs from March to June, Trimester 2 from July to October, and Trimester 3 from November to February.

Unit

A university subject or unit is normally one or two trimesters long and may have a value ranging from 1 to 4 credit points.

For a comprehensive list of common terms, please visit deakin.edu.au/glossary. You can also ask one of our course advisers to further explain your course structure or requirements.

Phone 1300 DEGREE (1300 334 733) and ask to speak with a course adviser.



FOR MORE INFORMATION VISIT
deakin.edu.au/glossary

Find out more

Where to get more information

Website

Deakin on the web, deakin.edu.au, contains detailed information on everything at Deakin, including:

- » courses
- » unit descriptions
- » student profiles
- » campuses
- » facilities and services
- » applications and scholarships
- » research.

To find detailed course information, including unit descriptions, you can go directly to the following sites:

- » Course search – deakin.edu.au/courses. Find the courses and units you are interested in.
- » *Deakin University Handbook* – the handbook provides a listing and description of all units and course structures deakin.edu.au/handbook.

You can also follow Deakin University through Facebook, Twitter and YouTube. Connect with other future students and ask current students and staff about life and study at Deakin.

www.facebook.com/discoverdeakin

www.twitter.com/discoverdeakin

www.youtube.com/discoverdeakin

Course enquiries

For additional course guides and brochures or more information about application, selection and enrolment, as well as fees and charges, please contact:

1300 DEGREE (1300 334 733)
enquire@deakin.edu.au
deakin.edu.au/courses.

Research degree enquiries

Research Services Division
Phone: 03 9251 7124
research-hdr@deakin.edu.au
deakin.edu.au/research

Disability services

For details, phone:

- » Geelong 03 5227 1221
 - » Melbourne 03 9244 6255
 - » Warrnambool 03 5563 3256
- or email drcentre@deakin.edu.au.

Open Days 2012

Warrnambool Campus

Sunday 12 August

Geelong Waurn Ponds Campus

Sunday 19 August

Geelong Waterfront Campus

Sunday 19 August

Melbourne Burwood Campus

Sunday 26 August

deakin.edu.au/openday

International student enquiries

Deakin University also produces course guides specifically for international students, to request a copy phone Deakin International on 03 9244 5095, email deakin-international@deakin.edu.au or visit deakin.edu.au/international.

Further reading

Study area booklets:

- » architecture and built environment
- » arts, humanities and social sciences
- » business and law
- » education
- » engineering
- » health
- » information technology
- » media, communication and creative arts
- » medicine
- » nursing and midwifery
- » nutrition and dietetics
- » optometry
- » psychology
- » science and environment.

There are a number of ways to request copies of the study area booklets. You can email enquire@deakin.edu.au, complete the form on the back of this book, phone 1300 DEGREE (1300 334 733) or visit deakin.edu.au/postgrad.

Our brochures are also available to view online at deakin.edu.au/future-students/brochures.



DID YOU KNOW?

A postgraduate qualification from Deakin will not only increase your knowledge in a specialised field of study but it will also help you to stand out in the marketplace and expand your career opportunities.

Postgraduate information nights

Melbourne Burwood Campus

Tuesday 15 May 2012, 5–7 pm

Deakin City Centre

550 Bourke St, Melbourne

Thursday 27 September

For details visit:

deakin.edu.au/pgevents

Melbourne Burwood Campus

Tuesday 9 October 2012, 5–7 pm

For more information please visit

deakin.edu.au/postgrad

or phone 1300 DEGREE (1300 334 733).

Useful internet addresses

Accommodation – on campus	deakin.edu.au/studentlife/residences du.residence@deakin.edu.au
Accommodation – off campus	deakin.edu.au/house-me housing-melbourne@deakin.edu.au housing-geelong@deakin.edu.au housing-warrnambool@deakin.edu.au
Bookshop	www.dusabookshop.com.au dusa-bookshop@deakin.edu.au
Study skills, career planning, Jobshop, financial assistance, personal support, childcare, chaplaincy, medical centres, international student support	deakin.edu.au/future-students/services-facilities studentlife@deakin.edu.au
Course enquiries	deakin.edu.au/courses enquire@deakin.edu.au
Disability Resource Centre	deakin.edu.au/disability drcentre@deakin.edu.au
Fees	deakin.edu.au/future-students/fees enquire@deakin.edu.au
International office	deakin.edu.au/international deakin-international@deakin.edu.au
Library	deakin.edu.au/library libinfo@deakin.edu.au
Research scholarships	deakin.edu.au/research/admin/scholarships research-scholarships@deakin.edu.au
Student administration	deakin.edu.au/dsa enquire@deakin.edu.au

For all phone enquiries please phone 1300 DEGREE (1300 334 733).



Important dates

2012

9 July

Trimester 2 begins

12 August

Open Day at Warrnambool Campus

19 August

Open Day at Geelong Wairn Ponds Campus

Open Day at Geelong Waterfront Campus

26 August

Open Day at Melbourne Burwood Campus

12 November

Trimester 3 begins

2013

Trimester 1

Teaching period 11 March–7 June

Easter holiday/intra-trimester break

29 March–7 April

Examination period 13–21 June

Trimester break 24 June–12 July

Trimester 2

Teaching period 15 July–11 October

Intra-trimester break 12–18 August

Examination period 17–25 October

Trimester break 28 October–8 November

Trimester 3

Teaching period

11 November–7 February 2014

Intra-trimester break

24 December–2 January 2014

Examination period 13–21 February 2014

Trimester break 24 February–7 March 2014

For details, please visit

deakin.edu.au/future-students.

Application closing dates

Coursework

Trimester 2 2012	Trimester 3 2012	
24 June Off campus	28 October Off campus	
1 July On campus	4 November On campus	
Trimester 1 2013	Trimester 2 2013	Trimester 3 2013
24 February Off campus	30 June Off campus	27 October Off campus
3 March On campus	7 July On campus	3 November On campus

Research

Research degree applications can be made at any time.

Research scholarships

Closing date for applications for research scholarships – Australian and New Zealand citizens and Australian permanent residents: 31 October 2012, to be taken up by 31 March 2013.



2012 DEAKIN UNIVERSITY OPEN DAYS

WARRNAMBOOL CAMPUS

Princes Highway
Warrnambool Victoria

**12
AUG**

GEELONG WAURN PONDS CAMPUS

Pigdons Road
Waurnd Ponds Victoria

**19
AUG**

GEELONG WATERFRONT CAMPUS

1 Gheringhap Street
Geelong Victoria

**19
AUG**

MELBOURNE BURWOOD CAMPUS

221 Burwood Highway
Burwood Victoria

**26
AUG**

2012 POSTGRADUATE INFORMATION EVENINGS

DEAKIN CITY CENTRE

550 Bourke Street
Melbourne Victoria

For details visit:
deakin.edu.au/pgevents

**27
SEP**

MELBOURNE BURWOOD CAMPUS

221 Burwood Highway
Burwood Victoria
5.00–7.00pm

**9
OCT**

deakin.edu.au

Published by Deakin University May 2012. While the information published in this guide was accurate at the time of publication, Deakin University reserves the right to alter, amend or delete details of course offerings and other information published here. For the most up-to-date course information please view our website at deakin.edu.au.

Deakin University CRICOS Provider Code: 00113B