

UNDERGRADUATE EDUCATION

2014

Melbourne | Geelong | Warrnambool | Off campus

APPLIED LEARNING

EARLY CHILDHOOD

HEALTH AND PHYSICAL EDUCATION

PRIMARY

SCIENCE

SECONDARY

BRENTON MURPHY

Bachelor of Health and Physical Education, see page 13.



EXPLORE THE WORLD OF EDUCATION AT DEAKIN



If you seek a creative, rewarding and challenging career that will help shape the learning experiences of children and adults alike, Deakin's specialist education courses will see you graduate with an in-demand qualification.

Deakin offers a broad range of education courses from early childhood, primary and secondary education, applied learning, health and physical education and science teaching. These courses provide extensive practical experience, preparing you for a career in the industry.

At Deakin you have several options. You can tailor your study mode to fit in with your work and other commitments and study overseas and gain credit towards your degree. You will finish your course with the knowledge to succeed in the career of your choice. You also have the option to go on to further study including research.

This booklet will outline the courses we offer in education, their key features and the career opportunities you can expect from successfully completing a degree at Deakin.

Choosing a university course is an important decision – and we are here to help. We encourage you to gather as much information as possible to help you make an informed decision about which course is best for you.

If you need more information, please contact us on 1300 DEGREE (1300 334 733), email enquire@deakin.edu.au or visit deakin.edu.au.

We look forward to seeing you at Deakin!

The Deakin team

CONTENTS

2	Education at Deakin
4	Where do our graduates go?
5	Courses and ATARs
6	Major study areas
7	Courses
24	Pathways
26	How to apply
28	Find out more
29	Important dates 2013



Using this booklet

This booklet provides you with detailed information about Deakin's undergraduate courses in education (for domestic students), including study areas, career opportunities, course overviews and course structures. It is designed to be read in conjunction with the *2014 Undergraduate Course Guide*, which gives an overview of all of Deakin's undergraduate courses, study options, support services and campuses.

Deakin University also produces course guides specifically for international students. To request a copy phone Deakin International on +61 3 9627 4877 or email deakin-international@deakin.edu.au.

Applying to Deakin is easy

You can apply for most of Deakin's undergraduate courses (bachelor's degrees) commencing in Trimester 1 through the Victorian Tertiary Admissions Centre (VTAC). We also offer courses commencing at other times of the year, for example Trimester 2 (commencing in August) and Trimester 3 (commencing in November), that require a direct application to Deakin. Whether you are a current Year 12, TAFE, private provider or mature-age student, currently studying at another university, in the workforce, taking a gap year or a graduate, visit www.vtac.edu.au or deakin.edu.au/study-at-deakin for details.

Find out more

If you need more information, please phone 1300 DEGREE (1300 334 733), email enquire@deakin.edu.au or visit deakin.edu.au.

You can also connect with us on social media, order other publications and visit us. Turn to page 28 for more information.

EDUCATION AT DEAKIN

Study in an area that makes a difference

Teaching is a career that can make a profound and lasting contribution to the future by positively educating and influencing the lives of students.

It is the largest profession in Australia, with more than 200 000 teachers working in 10 000 schools, teaching more than three million students. It is a rewarding career that offers creativity, flexibility and opportunity.

You will gain practical experience

With equal emphasis on professional knowledge and practical experience, we maintain strong links with regional communities and schools. Our school-based learning programs, teaching practicums and global teaching options ensure graduates are ready to teach today and into the future. As a Deakin teaching student, you will participate in a highly rewarding Professional Experience Program that allows you to spend time working with children in schools and alongside experienced teachers. This provides you with relevant practical knowledge and the ability to blend theory with practice. Professional experience is a significant and integral part of Deakin's teacher education programs. Sometimes referred to as 'the practicum', 'school experience', 'teaching rounds', 'teaching practice' or 'field experience', professional experience is designed to maximise your opportunities to develop the necessary knowledge, skills, attitudes and competencies required of a beginning teacher.

Professional experience is closely linked with the curriculum and professional teaching studies that you will undertake in your degree. In accordance with the requirements of the Victorian Institute of Teaching (VIT), the supervised professional experience must be satisfactorily completed in order to complete the degree.

Be exposed to vibrant research

The School of Education has a vibrant research culture with a critical mass of researchers in each major discipline of education. We have increased our research performance each year and maintain our leadership position in Australia, both in educational research and in the provision of innovative and flexible doctoral programs.

Our courses have industry input

Deakin's courses are developed with industry and professional input from specialised industry representatives. Through these professional links we ensure that our courses are relevant, practical and deliver the skills in demand in the workplace, resulting in excellent job and career opportunities for Deakin graduates. The professional studies sequence (a sequence of compulsory education units in all pre-service teaching courses) has been developed in consultation with principals, teachers and the Victorian Institute of Teaching. Deakin's strong partnerships with the education industry ensure that our courses remain relevant and students learn from lecturers with specialist skills developed from their work with outside agencies, their research and community involvement.

You can study the area of teaching that interests you

Deakin's School of Education offers a comprehensive range of undergraduate teaching courses, with disciplines in health and physical education, a wide choice of arts and science subjects, a comprehensive range of major and minor secondary curriculum areas, early childhood education, as well as programs addressing specific education needs, such as Koorie teacher education.

School education is the largest sector for which our courses are designed, with pre-service and in-service courses provided for primary and secondary teaching.

Our courses cover comprehensive curriculum areas

We offer a comprehensive range of major and minor secondary curriculum areas. School education is the main focus for initial teacher education, but at the graduate and in-service level we also offer professional development programs for those involved in TAFE and other VET provision, workplace learning and training, community and adult education, early childhood education, as well as higher education.

You will learn from the experts

Deakin's teaching and research staff are experts in their respective fields, with broad international links and connections with industry.

Benefit from a global perspective

Teachers of tomorrow need an understanding of international and intercultural education perspectives. As a Deakin education student, you will have the opportunity to enhance your skills and professional experience by participating in our Global Experience Program. The program is a teaching practicum for students enrolled in primary and secondary teaching courses. It offers you a diverse range of experiences in educational settings outside of Victoria and Australia.

The personal and professional benefits of engaging in an international experience are great. It challenges you to think about, deal with, and appreciate cultural and educational knowledge and/or practices and perspectives that are different from your own. As a result you will develop a more global approach to the teaching-learning process. Students who participate in the program often say the experience is the highlight of their pre-service course.

The program provides the opportunity to complete practical teaching experiences in overseas or remote locations such as Thailand, Vanuatu, China, Malaysia and the Northern Territory, and counts towards your Professional Experience Program.

Visit deakin.edu.au/gep for more information and to hear what students have to say about their global experience.

Global Experience Program for teaching students.

Visit deakin.yt/global-experience-program to watch a YouTube video.

We offer a number of scholarships

Deakin offers scholarships for academic excellence, access and equity, accommodation and Aboriginal and Torres Strait Islanders, ensuring higher education is accessible for all members of the community. For more information on scholarships, please visit deakin.edu.au/scholarships.

Study honours

Honours is a specialised year of study that allows you to draw together the theory and practical skills gained in previous undergraduate studies and develop an in-depth knowledge of your particular discipline through research and additional coursework and training in research techniques.

The Bachelor of Early Childhood Education (Honours) is a one year full-time or part-time equivalent course during which you undertake research and prepare a minor thesis on a topic related to the early childhood education field. You will work one-on-one with experienced supervisors to develop your proposal, undertake research and write your thesis.

The course is delivered in mixed mode (online and face-to-face) at the Melbourne Burwood Campus, Geelong Warn Ponds Campus and Warrnambool Campus.

Honours can offer you a competitive edge in the job market along with providing a pathway into a higher degree.

For more information on honours degrees, please visit deakin.edu.au/arts-ed/courses/honours.

International students and permanent residents

Graduates of teaching courses who are intending to apply for registration with the Victorian Institute of Teaching (VIT) are required to demonstrate an IELTS of an average band score of 7.5 across all four skill areas, where there is no score below 7 in any of the four skills areas and a score of no less than 8 in speaking and listening.

AN ELITE ATHLETE FRIENDLY UNIVERSITY

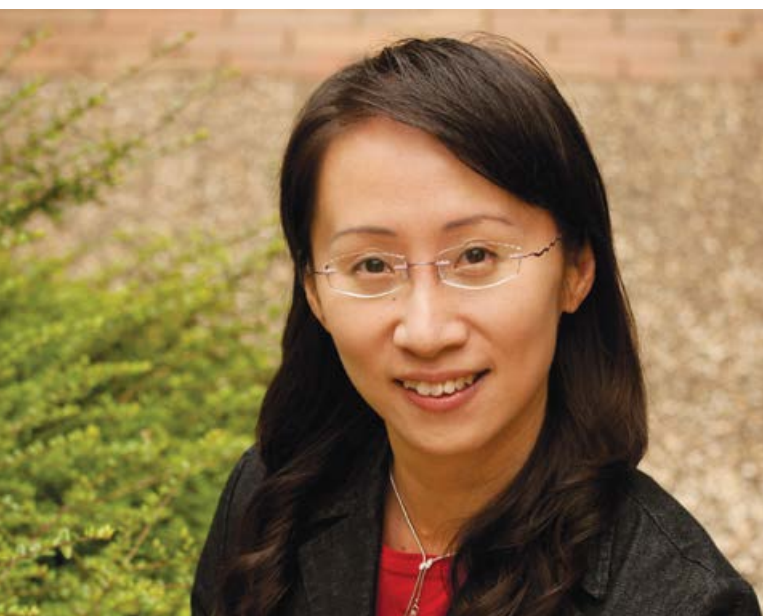
As a member of the Elite Athlete Friendly University (EAFU) Network, Deakin is dedicated to supporting elite athletes in their quest to achieve academic success alongside the demands of training and competition.

We enable recognised elite student athletes to negotiate assessment deadlines, lecture and tutorial attendance and study loads to integrate with sporting commitments. Student athletes may also be able to take several leaves of absence in order to meet sporting commitments and extend the length of time normally allowed to complete a course.

For more information, please visit deakin.edu.au/future-students/why-deakin/eafu.



WHERE DO OUR GRADUATES GO?



BONNIE YIM

SENIOR LECTURER IN EARLY CHILDHOOD EDUCATION
AND COURSE DIRECTOR OF BACHELOR OF EARLY
CHILDHOOD EDUCATION (BECE) AND BECE (HONOURS)
SCHOOL OF EDUCATION
GEELONG WAURN PONDS CAMPUS

'I enjoy interacting and working with my students and getting to know them. The most rewarding thing about my career is that I have been able to communicate with my students, support and guide them along their study path, overcome hurdles with them, and reach their goals together.

The learning environment for my students is collaborative. I am always there for them whenever they need me. I believe that my style of teaching enables my students to be independent learners but they are most welcome to approach me and share their joys or worries with me.

To ensure our teaching and learning is relevant to the changing needs of the industry and the community, we have recently rigorously evaluated our Bachelor of Early Childhood Education (BECE) course into a four-year program according to the current government policies and guidelines. This enables our graduates to register as teachers with the Victorian Institute of Teaching and the Australian Children's Education and Care Quality Authority.'

Deakin teaching graduates are equipped to pursue a range of career opportunities, in the classroom and beyond, both in Australia and overseas. In addition to early childhood education settings, primary schools and secondary schools, you may find employment in institutes of Technical and Further Education (TAFE)/Vocational Education and Training (VET), community education centres, private colleges, universities, government departments, private academies and agencies, hospitals or sports, recreation and fitness industries.

Recent Deakin teaching graduates have been employed by a broad range of organisations, including, but not limited to, the following:

Metropolitan

- Avila College, Mt Waverley
- Coatesville Primary School, East Bentleigh
- Good Shepherd Lutheran Primary School, Croydon Hills
- Haileybury College
- Hallam Valley Primary School, Narre Warren
- Knox Gardens Primary School, Wantirna South
- Laburnum Primary School, Blackburn
- Lowther Hall Anglican Girls Grammar, Essendon
- Melbourne Girls' College, Richmond
- Mont Albert Primary School, Mont Albert
- Mount View Primary School, Glen Waverley
- Oakleigh Greek Orthodox (Prep-12), Oakleigh
- Roberts McCubbin Primary School, Box Hill South
- Ruyton Girls' School, Kew
- Vermont Primary School, Vermont.

Regional

- Benalla College
- Bendigo South East Secondary College
- Cobram Secondary College
- Kardinia International College
- Koroit and District Primary School
- Launching Place Primary School
- Maguire College, Shepparton
- Rainbow Secondary College
- Stawell Secondary College
- Swan Hill Primary School
- Swifts Creek Primary School
- Traralgon College
- Warragul Regional College
- Warrnambool East Primary School.

Interstate

- Kormilda College, Darwin, Northern Territory
- Oombulgurri Rem Com School, Western Australia
- Pine Creek Primary School, Northern Territory
- Tennyson Woods College, Mt Gambier, South Australia.

Overseas

- Craigmount High School, Edinburgh
- Thurrock Primary School, UK
- Victoria International School of Sharjah (UAE – Dubai), Dubai.

COURSES AND ATARS

	Melbourne Burwood Campus Clearly-in ATAR 2013	Geelong campuses Clearly-in ATAR 2013	Warrnambool Campus Clearly-in ATAR 2013	Off campus Available	Page
<i>Bachelor of ...</i>					
Early Childhood Education E330	N/A	N/A	N/A		7
Education (Primary) E359	60.75	54.75	52.70		10
Health and Physical Education E377	72.70	63.80			12
Associate Degree of Arts, Business and Sciences A200		R/C	R/C		14
Education combined courses					
<i>Bachelor of ... / Bachelor of ...</i>					
Teaching (Science)/Science D351	62.10				15
Teaching (Secondary)/Arts D347	51.55				17
Graduate entry and pathway teaching degrees					
<i>Bachelor of ...</i>					
Early Childhood Education (Honours) E430	N/A	N/A	N/A		19
Graduate Diploma of Education (Applied Learning) E690		GE			20
Graduate Diploma of Teaching (Primary) E665		GE			21
Master of Teaching E760	GE	GE		Yes	21

Geelong campuses = Geelong Wairn Ponds Campus and Geelong Waterfront Campus.

GE = Graduate entry.

R/C = A range of criteria are used for selection.

N/A = ATAR not available or not applicable. The course is offered at this campus. Where no ATAR is available it may mean that other admission requirements apply. Please refer to the course entry for more information.

If a clearly-in ATAR is not listed it means that the course is not available at that campus.

For more information on ATARs please visit deakin.edu.au/future-students/year12.

Geelong Wairn Ponds Campus



MAJOR STUDY AREAS

Early childhood education **B G W**

As Australia is in the midst of significant growth in the early childhood education sector, this course has been developed as a new teacher education program to address the potential shortage of four-year trained early childhood teachers. The Bachelor of Early Childhood Education covers the education requirements of young children from birth to eight-year-olds, and will qualify you as a teacher in childcare centres, kindergartens, early learning centres and primary schools (subject to VIT approvals). The course has been adapted to meet new national and international standards in early childhood education, and includes a primary teaching component, allowing students to teach children up to age eight years. The course meets the requirements of the relevant accrediting authorities for working in early childhood and primary school settings (subject to VIT and ACECQA approvals).

Education (primary) **B G W**

Deakin's Bachelor of Education (Primary) is one of the School of Education's core teacher education programs and focuses on initial professional studies in primary education for school leavers and other entrants who do not already have a degree or diploma.

The course covers all areas of primary curriculum including English language, mathematics, science, arts, social education, health and physical education, and technology. It contains a strand of six elective units, providing the opportunity to build breadth of knowledge in areas of interest.

Health and physical education **B G**

Learn to teach health and physical education in secondary schools and gain a second teaching method from a range of discipline areas, including biology, chemistry (biological), dance, drama, mathematics or history.

Koorie teacher education **G**

Deakin offers teacher education streams specifically designed to meet the needs of Aboriginal and Torres Strait Islander students, with a focus on community and school-based studies. These streams are available in the Bachelor of Education (Primary), Bachelor of Early Childhood Education and the Bachelor of Teaching (Secondary)/Bachelor of Arts courses.

Teaching (science)/science **B**

Deakin's innovative Bachelor of Teaching (Science)/Bachelor of Science degree provides you with a full science degree, as well as a secondary teaching qualification. The course prepares you for a career in a wide range of science fields, including science education, and the flexible course structure gives you the opportunity to pursue two major study areas. Units are available in a variety of contemporary teaching fields, such as biology, biological chemistry, mathematical modelling and environmental science.

Teaching (secondary)/arts **B**

This unique course allows you to specialise in various arts areas and teach these subjects from junior secondary to VCE level. Subjects may include dance, drama, film, history, languages (LOTE – Arabic, Chinese and Indonesian), literary studies, mathematics, photography and many others.

Teaching of English as a Second Language (TESOL)

For those students wanting to undertake TESOL, the Victorian Institute of Teaching requirements for TESOL include a sub-major in one of linguistics or a second language (i.e. not the teacher's first language). For more information please visit www.vit.vic.edu.au.

Teaching Languages other than English (LOTE) **B G**

The Victorian Institute of Teaching for primary and secondary teachers of LOTE requires an advanced level major study in the language, requiring successful completion of Year 12 studies in the language for entry into the course. Native speakers of the language may seek a statement of equivalence from an Australian university, to verify that their knowledge and competence in the language meets the standard of a post-Year 12 advanced level major study in the language. LOTE major sequences offered in the Bachelor of Education (Primary) and Bachelor of Teaching (Secondary)/Bachelor of Arts at the Melbourne Burwood Campus are Arabic (Secondary), Indonesian and Chinese; and Indonesian at the Geelong Waurin Ponds Campus and off campus.

COURSES

Course duration in years **3**
 Melbourne Burwood Campus **B**
 Geelong Waterfront Campus **F**
 Geelong Warrn Ponds Campus **G**
 Warrnambool Campus **W**
 Off campus **X**

BACHELOR OF EARLY CHILDHOOD EDUCATION

4⁰ **B** **G** **W** **^**

DEAKIN CODE	ATAR	INDICATIVE FIRST YEAR FEE
E330	B N/A G N/A W N/A	\$5870 (CSP) ¹

YEAR 12 PREREQUISITES

VCE units 1 and 2 – two units (any study combination) of general mathematics or mathematical methods (CAS). VCE units 3 and 4 – a study score of at least 30 in English (ESL) or 25 in any other English. Year 12 school leavers with a Deakin University endorsed Senior VCAL Learning Program are eligible to apply for the course. Applicants will be required to submit supporting documentation and may be required to participate in an interview.

VET/TAFE DIPLOMA OF CHILDREN'S SERVICES HOLDERS PREREQUISITES

A graded two-year Diploma of Children's Services or equivalent early childhood qualification from a VET/TAFE institution or other approved registered training organisation and a current Level 2 First Aid Certificate.

NON-YEAR 12 (OR EQUIVALENT) REQUIREMENTS

Applications are assessed based on evidence indicating suitability for teaching, including any previous study and work-related experience that demonstrates literacy and numeracy. You may also be required to sit a test.

EARLY CHILDHOOD TEACHING QUALIFICATION UPGRADE (AVAILABLE FROM 2014) REQUIREMENTS

A three-year early childhood or teaching qualification, as listed on the ACECOA approved list of early childhood teaching qualifications.

- ° This course is offered in flexible study modes over four years or can be fast-tracked by studying in three trimesters per year, enabling completion in nine trimesters.
- ^ This course is offered at the Melbourne Burwood Campus, Geelong Warrn Ponds Campus, Geelong Waterfront Campus or Warrnambool Campus. The University also offers the course through its TAFE partners at their campuses in Dandenong, Mornington Peninsula, Portland and Swan Hill.

N/A Refer to page 5.

Enrolment in Deakin's Bachelor of Early Childhood Education is now available to Year 12 applicants and via the Associate Degree of Arts, Business and Sciences delivery mode (through our TAFE partners Chisholm in Dandenong and Mornington Peninsula, Sunraysia Institute of TAFE in Swan Hill and South West Institute of TAFE in Portland. Visit deakin.edu.au/doorstep for more information). The course has been adapted to meet new national and international standards in early childhood education, and includes a primary teaching component, allowing graduates to teach children up to eight years of age.

The course will teach you to apply an understanding of child development, curriculum theories and pedagogies to enable you to design and implement child-centred, play-based and developmentally appropriate programs in child care, preschool and school contexts. You will also learn to identify and respond positively to contemporary issues and the changing work context within early childhood and primary education.

This course is offered in flexible study modes over four years, or can be fast-tracked by studying under Deakin's trimester system, enabling completion in nine trimesters.

> Continued on next page ...



JASON TRIGGS

BACHELOR OF EARLY CHILDHOOD EDUCATION MELBOURNE BURWOOD CAMPUS

'I chose to study at Deakin because of the exceptional reputation it has with its education courses.

At uni I've had the opportunity to have one of my articles published in *Every Child*, a quarterly journal published by Early Childhood Australia. I have also been able to attend the Early Childhood Australia national conference in Perth, 'Consulting the Compass: Defining Directions'. There, I was awarded the Barbara Creaser Young Advocates Award.

I am currently a sessional teacher at Swinburne University of Technology (TAFE), where I teach both the Certificate III and Diploma of Children's Services (Early Childhood Education and Care). I love that while I learn here at Deakin I can pass that knowledge onto my students at TAFE. For me it means that the next generation of early childhood professionals are entering the profession wiser and more dedicated.

After graduating I plan to do further study at Deakin, ideally to one day complete my PhD.'

COURSES

The **Melbourne Burwood Campus** offering is in an on-campus, online e-learning mode of learning. Full-time Melbourne Burwood Campus students attend two or three days of on-campus, face-to-face classes per week. Some units may be arranged in intensive sessions at least three times each trimester. Students undertake one or two professional experiences per year.

The **Geelong Waurin Ponds** and **Warrnambool Campus** offerings are in a community-based, online e-learning and face-to-face mode of learning. Full-time Geelong Waurin Ponds and Warrnambool Campus students attend two days of on-campus face-to-face intensive sessions held at least three times each trimester. Students undertake one or two professional experiences per year.

The Bachelor of Early Childhood Education is also offered at the following TAFE campuses:

- Chisholm Institute of TAFE (Mornington Peninsula and Dandenong campuses)
- Sunraysia Institute of TAFE (Swan Hill campus)
- South West Institute of TAFE (Portland campus).

An honours year is available upon completion of this degree.

Professional recognition

The course is accredited by the Victorian Department of Education and Early Childhood Development upon recommendation from the Victorian branch of Early Childhood Australia (subject to VIT and ACECQA approvals), thereby meeting the requirements for working in kindergartens, early childhood and primary school settings.

Career opportunities

There is an increasing demand for qualified and accredited early childhood educators and teachers. Graduates of this course will have career opportunities in childcare facilities, kindergartens, early learning centres and as teachers in early primary school settings. Work in early childhood educational settings provides future career scope for positions such as centre director, coordinator, preschool field officer, adviser or senior adviser within early childhood facilities. Opportunities also exist for employment in government agencies, primary schools, community services or not-for-profit organisations.

Work-Integrated Learning

You will complete a minimum of 110 days of supervised professional experience.

Work placement requirements

Please refer to the work placement requirements under the Bachelor of Education (Primary) on page 11.

Major studies

Education (teacher education), literacy (literacy and numeracy programs), numeracy (education studies), professional experience practice (authentic practicum placements), teaching pedagogies (early childhood and primary), teacher education (early childhood and primary) and research.

Course structure

The course comprises 32 credit points of core units over the equivalent of four years of full-time study. A fast-track option is also available, studying in nine trimesters over three years.

Level 1 (Year 12 entry)

ECE110 Child Development I
ECE111 Curriculum I: Curriculum, Theory, Development and Evaluation
ECE112 Curriculum II: Planning and Assessment for Teaching and Learning
ECE113 Young Children's Mathematical Development
ECE114 Contexts for Learning in Early Childhood Education
ECE115 Foundations of Early Childhood Education: Past and Present
ECE116 Health, Safety, Wellbeing and Nutrition
ECP127 Professional Experience I (0–2 Years)

Level 2 (Student entering with approved TAFE qualification)

ECE210 Child Development II
ECE212 Curriculum III: Planning and Assessment for Teaching and Learning
ECE216 Children's Health, Wellbeing and Physical Education
ECE220 Science I: Science and Environmental Awareness for Young Children
ECE230 Language and Literacy Development in Early Childhood
ECE240 Creative Arts I: Visual Art and Media Arts
ECP227 Professional Experience II (3–5 Years)
ECP228 Professional Experience III (3–5 Years)

Level 3

ECE320 Science II: Science and Design Technology
ECE330 Multiliterate Learners in Early Years and School Environments
ECE370 Advanced Management of Children's Behaviour
ECE455 Effective Primary Mathematics Learning
ECE465 Ecological Perspectives for Learning and Teaching in Early Childhood
ECE475 Effective Partnerships for Learning
ECP327 Professional Experience IV (Primary School 1)
ECP427 Professional Experience V (Primary School 2)

Level 4

ECE350 Transition Case Study (2 credit points)
ECE360 Critical Issues in Safety and Child Protection
ECE390 Management and Leadership
ECE440 Creative Arts II: Music, Dance and Drama
ECP226 Professional Teaching Practice and Child Study (0–3 Years)
(2 credit points)
ESE499 Independent Project

Fast-track option

Level 1 (Year 12 entry)

ECE110 Child Development I
 ECE111 Curriculum I: Curriculum, Theory, Development and Evaluation
 ECE112 Curriculum II: Planning and Assessment for Teaching and Learning
 ECE113 Young Children's Mathematical Development
 ECE114 Contexts for Learning in Early Childhood Education
 ECE115 Foundations of Early Childhood Education: Past and Present
 ECE116 Health, Safety, Wellbeing and Nutrition
 ECP127 Professional Experience I (0–2 Years)
 ECP226 Professional Teaching Practice and Child Study (0–3 Years)
 (2 credit points)

Level 2 (Student entering with approved TAFE qualification)

ECE210 Child Development II
 ECE212 Curriculum III: Planning and Assessment for Teaching and Learning
 ECE216 Children's Health, Wellbeing and Physical Education
 ECE220 Science I: Science and Environmental Awareness for Young Children
 ECE230 Language and Literacy Development in Early Childhood
 ECE240 Creative Arts I: Visual Art and Media Arts
 ECE350 Transition Case Study (2 credit points)
 ECE360 Critical Issues in Safety and Child Protection
 ECP227 Professional Experience II (3–5 Years)
 ECP228 Professional Experience III (3–5 Years)

Levels 3 and 4

ECE320 Science II: Science and Design Technology
 ECE330 Multiliterate Learners in Early Years and School Environments
 ECE370 Advanced Management of Children's Behaviour
 ECE390 Management and Leadership
 ECE440 Creative Arts II: Music, Dance and Drama
 ECE455 Effective Primary Mathematics Learning
 ECE465 Ecological Perspectives for Learning and Teaching in Early Childhood
 ECE475 Effective Partnerships for Learning
 ECP327 Professional Experience IV (Primary School 1)
 ECP427 Professional Experience V (Primary School 2)
 ESE499 Independent Project

For more information and to click through to unit descriptions,
 please visit deakin.edu.au/courses.

As a Deakin teaching student you will participate in a highly rewarding Professional Experience Program, allowing you to spend time working with children in schools and alongside experienced teachers.



COURSES



HOLLY SMITH

BACHELOR OF EDUCATION (PRIMARY) MELBOURNE BURWOOD CAMPUS

'My course was appealing because we get hands-on experience with teaching rounds, as well as access to an interactive teaching room while in tutorials. It is such an amazing resource to have at our disposal. It helps me get a feel for the classroom setting and that will help me prepare for my career as a teacher.'

I like the fact that my tutors and lecturers are out in the teaching field, they know up-to-date details about the industry and tell us exactly what we need to know to be good teachers.

I would recommend my course to others because it really does prepare you for the real world of teaching.

I chose to study at Deakin because of the wonderful friendly atmosphere and the greenness of the campus at Burwood. I love to be able to go for a walk down by the creek'

BACHELOR OF EDUCATION (PRIMARY)

4 B G W

DEAKIN CODE	ATAR	INDICATIVE FIRST YEAR FEE
E359	B 60.75 G 54.75 W 52.70	\$6770 (CSP) ¹
YEAR 12 PREREQUISITES		NON-YEAR 12 REQUIREMENTS
VCE units 1 and 2 – two units (any study combination) from general mathematics or mathematical methods (CAS) or VCE units 3 and 4 – mathematics (any). VCE units 3 and 4 – a study score of at least 30 in English (ESL) or 25 in any other English.		VTAC Personal History online and STAT Multiple Choice.

Deakin's primary education course is a specialist professional qualification covering all areas of the primary curriculum, including English language, mathematics, science, arts, social education, health and physical education and technology.

The course incorporates a highly rewarding work placement program and contains a strand of six elective units, which provide the opportunity to build breadth of knowledge in areas of interest or in areas of contemporary focus in education.

Study towards a creative, rewarding and challenging career and develop your skills in communication, leadership, organisation, management and information technology.

Professional recognition

Graduates of the course will qualify for a degree in primary teaching, which will meet the registration requirements of the Victorian Institute of Teaching and other state teacher registration boards in Australia.

Career opportunities

Graduates of this course have found careers in Australian and overseas primary schools (where VIT registration is recognised) at all year levels, in government departments, public service, health and welfare organisations, the media, as well as in private academies and agencies.

Work-Integrated Learning

You will participate in a highly rewarding work placement program, spending at least 80 days working in schools with children and alongside experienced teachers. You will also have the opportunity to undertake a work placement in international or remote Northern Territory settings through our Global Experience Program.

Work placement requirements

The Working with Children Act 2005 (Vic.) requires a person who engages in child-related work, as defined in the Act, to obtain an assessment notice under the Act, known as a Working with Children Check (WWCC). The Act is administered by the Department of Justice: justice.vic.gov.au. School experience placements in schools in the course of a university degree are 'child-related work'. Under the Working with Children Act 2005 (Vic.) a student teacher must obtain a WWCC before commencing school experience placements. Should a student fail to obtain a WWCC, practical training in a school will not be provided, resulting in the student's inability to complete the degree.

Course structure

You must complete 32 credit points of study, including 26 core units (inclusive of a 7-unit professional studies sequence that includes supervised professional experience) and 6 elective units.

Level 1

Trimester 1

ALL153 Literature for Children and Young Adults

ETP101 Teacher-Learner Identities

SLE103 Ecology and the Environment

*Elective unit 1 (1 credit point)**

Trimester 2

AlA105 Visions of Australia – Time and Space From 1700 to 2010

ETP102 Social Contexts of Education

SIT106 Fundamental Concepts of Mathematics

*Elective unit 2 (1 credit point)**

Note: Students must pass at least five units at first-year level before progressing to second-year level.

Level 2

Trimester 1

ECL210 Multiliterate Learners in Early Years Environments

EEH216 Primary Physical Education

ETP201 Teacher-Learner Relationships

*Elective unit 3 (1 credit point)**

Trimester 2

ECA209 Arts Education in Primary Schools

EEH217 Student Health and Wellbeing

ESM210 Children and Mathematics: Developing Mathematical Concepts

*Elective unit 4 (1 credit point)**

Level 3

Trimester 1

EES345 Primary Science Education 1

ESJ357 Studies in LOTE Curriculum A[#]

ESM310 Teachers and Mathematics: Creating an Effective Classroom

ETP301 Pedagogy

*Elective unit 5 (1 credit point)**

Trimester 2

ECL310 Multiliterate Learners in Middle Years Environments

EE0311 Learners Living in Their World: Humanities Perspectives

ESJ358 Studies in LOTE Curriculum B[#]

ETP302 Curriculum Inquiry

*Elective unit 6 (1 credit point)**

Level 4

Trimester 1

EEA411 Primary Arts Education: Focussed Study

EEO410 Learners Inquiring in and About Their World: Human Disciplines

EST400 Primary Technology Education: Creativity and Design

ETP401 Assessment: Ways of Knowing Learners

Trimester 2

ECL410 Literacy Teacher – Researchers in New Times

EES440 Primary Science Education 2

ESM410 Professional Practice and Mathematics:

Designing an Inclusive Program

ETP402 University-To-Work Transition

For information on specialist sequences (including LOTE requirements), middle years (7–10) study options, discipline study units and recommended elective units, please visit deakin.edu.au/courses.

* Elective units may be taken from faculties other than Arts and Education and provide a great opportunity to develop breadth or depth in your studies. Choice of elective units should be based on personal interest, existing expertise, broadening your tertiary education or developing a subject sequence relevant to primary teaching. Use the elective sequence as an opportunity to broaden your content area of interest. Options for teaching, for example, include the humanities, SOSE, health and physical education, mathematics, science, English, visual arts or a Language other than English. More information is available from the Student Support Office.

[#] ESJ357 and ESJ358 are for students completing a LOTE sequence and are to be taken in place of the elective units 5 and 6.

Middle years option

Students undertaking the Bachelor of Education (Primary) may also complete a middle years option (years 7 to 10) in drama, English, mathematics, health, history, humanities/SOSE, LOTE, music, visual arts and general science, which will prepare you for teaching in a discipline area in years 7–10 of secondary school. Two options of study are available, depending on the discipline requirements established by the Victorian Institute of Teaching (VIT) – some disciplines require a major study or combination of sub majors to a total of 6 credit points, and others require a sub major sequence of 4 credit points. Visit deakin.edu.au/education for more information.

COURSES

BACHELOR OF HEALTH AND PHYSICAL EDUCATION 4 B G

DEAKIN CODE	ATAR	INDICATIVE FIRST YEAR FEE
E377	B 72.70 G 63.80	\$6870 (CSP) ¹
YEAR 12 PREREQUISITES	NON-YEAR 12 REQUIREMENTS	
VCE units 1 and 2 – two units (any study combination) from general mathematics or mathematical methods (CAS) or VCE units 3 and 4 – mathematics (any). Units 3 and 4 – a study score of at least 30 in English (ESL) or 25 in any other English.	Personal particulars form (deakin.edu.au/education/forms.php). STAT Multiple Choice test may be required.	

Deakin's health and physical education course prepares you for a career in secondary health and physical education. Additional teaching methods may be taken from a range of discipline areas including biology, chemistry, dance, drama, mathematics and history.

Professional recognition

Graduates of the course will qualify for a degree in secondary health and physical education teaching, which will meet the registration requirements for the Victorian Institute of Teaching and other state teacher registration boards in Australia. As well as qualifying to teach health and physical education, graduates may become qualified to teach in biology, chemistry, dance, drama, history or mathematics.

Career opportunities

Graduates of this program have found careers in Australian and overseas secondary schools, sports management, the recreation and fitness industries, government departments, professional coaching positions, as well as in private academies and agencies.

Work-Integrated Learning

You will participate in a highly rewarding Professional Experience Program, spending at least 80 days working in schools with children and alongside experienced teachers.

Work placement requirements

Please refer to the work placement requirements under the Bachelor of Education (Primary) on page 11.

Course structure

You must complete 32 credit points of study, including 18 credit points of education units and 14 credit points of discipline studies.

Level 1

EEH101 Health and Physical Education Studies
EEH102 The Art and Science of Movement
EPP101 Teacher–Learner Identity
EPP102 Learning–Teaching Communities
HBS109 Human Structure and Function
HSE010 Exercise and Sport Laboratory Safety (0 credit points)
HSE102 Functional Human Anatomy
plus second method discipline study one and two from any faculty

Level 2

EEH201 Health and Physical Education: Curriculum Study B
EPP203 Professional Experience in Health and Physical Education: Curriculum Study A
HSE201 Exercise Physiology
HSE202 Biomechanics
HSE203 Exercise Behaviour
HSE204 Motor Learning and Development
plus second method discipline study three and four from any faculty

Level 3

EEH315 Teaching Sexuality Education in the Middle Years
EEH405 Senior Physical Education: Curriculum Study
EPP304 Ways of Knowing Children and Adolescents
HSE311 Applied Sports Science 1
HSE314 Applied Sports Science 2
HSN201 Principles of Nutrition
plus curriculum study method units 2A and 2B

Level 4

EEH401 Professional Issues in Health and Physical Education
EEH404 Health: A Family and Community Focus
EEH455 Approaches to Teaching Health and Physical Education
EPP305 Policy, Schooling and Society
EPP406 Professional Identity and Curriculum Work
ESH403 Senior Health and Human Development: Curriculum Study
EXC425 Literacy and Numeracy Across the Curriculum
HSE301 Principles of Exercise Prescription

Secondary method discipline sequences

Select four units from each discipline.

BIOLOGY

SLE111 Cells and Genes
SLE132 Biology: Form and Function
SLE254 Genetics

Plus one unit from:

SLE203 Plant Biology
SLE234 Microbiology

CHEMISTRY

SLE155 Chemistry for the Professional Sciences*
SLE210 Chemistry – The Enabling Science

Plus two units from:

SLE213 Introduction to Spectroscopic Principles
SLE214 Organic Chemistry
SLE235 Chemical Systems

* Students without Year 12 Chemistry (or equivalent) may be encouraged to complete SLE133 prior to SLE155.

DANCE[^]

ACD101 Introduction to Contemporary Dance Practice A
ACD102 Introduction to Contemporary Dance Practice B
ACD203 Contemporary Dance Practice and History A
ACD204 Contemporary Dance Practice and History B

[^] Melbourne Burwood Campus students only.

Note: ACD203, ACD204 prerequisites apply.

DRAMA[^]

ACP101 Principles of Live Performance
ACP177 Modern and Postmodern Drama
ACP279 The Integrated Performer
ACP280 Performance, Text, Realisation

[^] Melbourne Burwood Campus students only.

Note: ACP279 is a prerequisite of ACP280.

HISTORY

Select two units from:

AIA105 Visions of Australia – Time and Space From 1700 to 2010
 AIA106 Populate or Perish: Australia's People
 AIH107 World History Between the Wars 1919–1939
 AIH108 The World After the War: 1945–1991

Plus two units from:

AIH205 Sex and Gender in History
 AIH238 Australia and the Two World Wars
 AIH265 Great Debates: Unfinished Business of the Past

Note: AIH265 is offered in the wholly online teaching mode only.

MATHEMATICS

SIT192 Discrete Mathematics
 SIT194 Introduction to Mathematical Modelling
 SIT291 Mathematical Methods for Information Modelling

Plus one unit from:

SIT281 Cryptography
 SIT292 Linear Algebra and Applications to Data Communications

Curriculum study method units

BIOLOGY

ESS444 Science: Curriculum Study
 ESS467 Senior Biology: Curriculum Study

CHEMISTRY

ESJ460 Studies in Curriculum (TESOL or Senior Chemistry)
 ESS444 Science: Curriculum Study

Note: ESJ460 students to select senior chemistry: curriculum study specialism.

DANCE

ECA431 Arts Education Discipline Study 1
 ECA432 Arts Education Discipline Study 2

Note: ECA431/ECA432 students to select dance specialism.

DRAMA

ECA431 Arts Education Discipline Study 1
 ECA432 Arts Education Discipline Study 2

Note: ECA431/ECA432 students to select drama specialism.

HISTORY

ECS471 History and Humanities: Curriculum Study A
 ECS472 History and Humanities: Curriculum Study B

MATHEMATICS

ESM424 Mathematics: Curriculum Study
 ESM425 Senior Mathematics: Curriculum Study

Professional experience units

Professional experience units are academic units that incorporate practicum. The number of practicum days required for each unit is indicated below.

Level 1

EPP101 Teacher–Learner Identity (4 days)
 EPP102 Learning–Teaching Communities (6 days)

Level 2

EPP203 Professional Experience in Health and Physical Education: Curriculum Study A (10 days)

Level 3

EPP304 Ways of Knowing Children and Adolescents (15 days)
 EPP305 Policy, Schooling and Society (10 days)

Level 4

EPP406 Professional Identity and Curriculum Work (35 days)



BRENTON MURPHY

BACHELOR OF HEALTH AND PHYSICAL EDUCATION
 MELBOURNE BURWOOD CAMPUS

'I have always lived an active lifestyle that has shaped who I am today. I want to use my experiences to inform and encourage future generations to live active and healthy lifestyles that will enhance their lives. I also have a strong passion for helping people to become the best they can be and it is for these reasons that I chose to become a health and physical education teacher.'

I chose to study at Deakin because it provided an environment and atmosphere that appealed to me most. Coming from a country town, I wanted a university that had a strong community feel and made me feel less daunted by the move to the city. The atmosphere at Deakin and the great reports that I heard from current and former students sold it to me.

I have recently begun working at a primary school in a before and after school program, which looks after and runs activities for students. My study helps me to develop teaching skills and techniques that I can then put into practice while working so that I am constantly improving my teaching.'

» Read more about Brenton's experience at deakin.is/brenton-murphy.

For more information and to click through to unit descriptions, please visit deakin.edu.au/courses.

COURSES

ASSOCIATE DEGREE OF ARTS, BUSINESS AND SCIENCES[^]

DEAKIN CODE	INDICATIVE FIRST YEAR FEE
A200	\$6590 (CSP) ¹

YEAR 12 PREREQUISITES AND NON-YEAR 12 REQUIREMENTS

There are no prerequisite studies for this course. You will need to complete an application form, including a detailed personal statement. You also need to attend an information session, including completion of a literacy exercise as part of an interview process.

The Associate Degree of Arts, Business and Sciences will help you develop skills in written communication, group presentations, critical thinking and learning technologies, which increase your chances of success at university.

The key advantage of the associate degree is that it provides a supported transition to tertiary study. It allows for entry into a range of target degrees (as approved by Deakin University) offered at the Warrnambool Campus, Geelong Waterfront Campus, Geelong Warrnambool Campus, or via off-campus study. Completion of the associate degree may give you up to 18 months credit towards one of these target degrees.

Career opportunities

The associate degree can open doors to employment in a range of fields, including administration, marketing, business, management, banking, finance, community work, health, natural resource management and science. You also have the option of continuing your studies to complete a bachelor's degree, which will provide access to a wide range of careers and employment opportunities.

Course structure

To graduate from the Associate Degree of Arts, Business and Sciences, you must complete a minimum of 16 credit points, comprising core units and elective units. If you are studying through a partner TAFE these credit points can also include credits gained through subjects studied as part of your TAFE diploma course.

The core units focus on the knowledge and skills you need to be a successful university student. They will provide you with an introduction to studying at university from the perspective of three different disciplines or subjects, and ensure that you become a more self-directed learner. They will also provide support for your study in other subject areas, particularly through the development of academic writing, critical thinking and information technology skills.

In addition to the core units, you will select four elective units in your first year and eight in your second year, from units offered by the Faculties of Arts and Education; Business and Law^{*}; Science, Engineering and Built Environment; and Health. Major sequences in arts, business, education, health and science are available.

You will be guided with your subject selection to ensure you choose units that will provide the maximum credit when using the associate degree as a pathway to a bachelor's degree or to optimise employment opportunities.

If you study this course through the Warrnambool Campus or Geelong Warrnambool Campus^{*} you will also have the option to complete a mentored work placement in your final trimester. This is a great way to gain real-life work experience and enhance your employment opportunities.

Core units – for course offered at the Warrnambool and Geelong Warrnambool Campuses^{*}

Level 1

EAD101 Learning for a Knowledge Society
EAD102 E-Literacy for Contemporary Learning
EAD104 Work and the Sustainable Society (2 credit points)
plus four elective units from the list below

Level 2

Select eight first or second year level units of a target bachelor's degree.

Elective units

You may choose from a range of units offered at levels 1 and 2 from the Warrnambool Campus, Geelong Warrnambool Campus^{*} (or off campus) as listed below, or the Work Placement unit, which is recommended for those intending to finish at the end of level 2.

ACV101 Studio Art: Painting A
ACV102 Studio Art: Painting B
AIA105 Visions of Australia – Time and Space From 1700 to 2010
AIA106 Populate or Perish: Australia's People
ALC101 Contemporary Communication: Making Sense of Text, Image and Meaning
ALC102 Contemporary Communication: Making Sense of New Media
ALW117 Writing for Professional Practice
ASC101 Introduction to Sociology A
ASC102 Introduction to Sociology B
EAD103 Independent Study (recommended)
EAD105 Applied Community Project (recommended)
HBS107 Understanding Health
HBS108 Health Information and Data
HBS110 Health Behaviour
MAA103 Accounting for Decision Making
MAE102 The Global Economy
MIS101 Business Information Systems
MMM132 Management
SLE102 Physical Geography
SLE103 Ecology and the Environment

Work placement unit

EAD201 Work Placement (2 credit points)

[^] As part of the Deakin at Your Doorstep Initiative, this course is offered at the Warrnambool Campus or Geelong Warrnambool Campus^{*}. The University also offers the course through its TAFE partners at their campuses in Bairnsdale, Craigieburn, Dandenong, Mornington Peninsula, Portland, Swan Hill and Wangaratta.

^{*} Faculty of Business and Law units are offered from the Geelong Waterfront Campus.

Deakin at Your Doorstep – Associate Degree of Arts, Business and Sciences.

Visit deakin.yt/associate-degree to watch a YouTube video.

COMBINED COURSES

BACHELOR OF TEACHING (SCIENCE)/ BACHELOR OF SCIENCE **4** **B**

DEAKIN CODE	ATAR	INDICATIVE FIRST YEAR FEE
D351	B 62.10	\$7710 (CSP) ¹
YEAR 12 PREREQUISITES		NON-YEAR 12 REQUIREMENTS
VCE units 1 and 2 – two units (any study combination) from general mathematics or mathematical methods (CAS). VCE units 3 and 4 – a study score of at least 30 in English (ESL) or 25 in any other English and a study score of at least 20 in any one of mathematics (any), biology, chemistry, environmental science.		VTAC Personal History online and GPA.

The Bachelor of Teaching (Science)/Bachelor of Science is designed to introduce you to contemporary science and its applications, as well as innovative teaching and learning situations, so that you will be able to introduce and sustain innovative practices in school science that engage students and support quality learning.

The course includes a professional practice sequence designed to introduce a broader and more contemporary view of science.

Professional recognition

Successful completion of this course will meet the registration requirements of the Victorian Institute of Teaching and other state teacher registration boards in Australia.

Career opportunities

Graduates from this program have found careers in Australian and overseas secondary schools, government departments, universities, the public service, TAFE and adult community educational institutions, health and welfare organisations, as well as in private academies and agencies.

Graduates will also have opportunities to work in science-related industries such as science writing and interpretation, government departments, teaching and university research, and in public sector positions such as conservation groups and other research positions in a variety of organisations.

Work-Integrated Learning

As part of the Bachelor of Science component of the course you are required to complete Professional Practice. This will allow you to gain valuable work experience, giving you the opportunity to apply and consolidate knowledge gained in your course, experience workplace culture and workplace practices, explore career options and develop a professional network. You may also have the opportunity to undertake industry-based learning, which can be credited towards your degree.

You will also undertake 80 days of supervised work placement organised by the Professional Experience Office as part of your completion of the course. Some of this experience will take place in non-school settings, consistent with current directions advocated by the Victorian Institute of Teaching.

Work placement requirements

Please refer to the teaching work placement requirements under the Bachelor of Education (Primary) on page 11.

Course structure

You must complete 32 credit points of study – 16 credit points from the Bachelor of Teaching (Science) and 16 credit points from the Bachelor of Science, including at least one major sequence and one minor sequence.

Level 1

EPP101 Teacher–Learner Identity
 EPP102 Learning–Teaching Communities
 SEP122 Physics for the Life Sciences
 SLE010 Laboratory and Fieldwork Safety Induction Program (0-credit-point compulsory safety unit)
 SLE111 Cells and Genes
 SLE133 Chemistry in our World*
 SLE155 Chemistry for the Professional Sciences*
plus up to two science major units and one science minor unit

* Note: Students who have not completed Year 12 Chemistry or equivalent may choose to undertake SLE133 Chemistry in our World in Trimester 1. Students who have completed Year 12 Chemistry or equivalent may choose to undertake SLE155 Chemistry for the Professional Sciences in Trimester 2.

Level 2

EES200 Communicating Science
 EPP207 Pedagogy
 SLE103 Ecology and the Environment#
 SLE352 Community Science Project

Plus one unit from:

SIT194 Introduction to Mathematical Modelling
 SLE251 Research Methods and Data Analysis#
plus two science major units and one science minor unit

Sequence of units may vary depending on your choice of major sequence. Please contact the Student Support Office for advice.

Level 3

EEH531 Promoting Student Wellbeing
 EPP304 Ways of Knowing Children and Adolescents
Secondary curriculum study 1A and 2A
plus three science major units and one science minor unit

Level 4

EPP305 Policy, Schooling and Society
 EPP406 Professional Identity and Curriculum Work
 ESM415 Problem Solving and Modelling in the Mathematics Classroom
 ESS415 Resources in the Contemporary Science Curriculum
 ESS439 Issues in Science and Environmental Education
 EXC425 Literacy and Numeracy Across the Curriculum
 EXC440 Teaching for Diversity
Secondary curriculum study 1B and 2B

Note: Students undertaking a mathematics major or sub-major may elect to enrol in ESM415 in lieu of ESS439.

> Continued on next page ...

COURSES

Melbourne Burwood Campus



Professional experience units

Professional experience units are academic units that incorporate practicum. The number of practicum days required for each unit is indicated below.

Level 1

EPP101 Teacher–Learner Identity (4 days)

EPP102 Learning–Teaching Communities (6 days)

Level 2

EPP207 Pedagogy (10 days)

Level 3

EPP304 Ways of Knowing Children and Adolescents (15 days)

EPP305 Policy, Schooling and Society (10 days)

Level 4

EPP406 Professional Identity and Curriculum Work (35 days)

Major/minor sequences

- Biological chemistry **B**
- Biology **B**
- Environmental science **B**
- Mathematical modelling **B** **X**

For more information on these major sequences, please see the *2014 Undergraduate Science Career Booklet*.

For more information and to click through to unit descriptions, please visit deakin.edu.au/courses.

BACHELOR OF TEACHING (SECONDARY)/ BACHELOR OF ARTS **4** **B**

DEAKIN CODE	ATAR	INDICATIVE FIRST YEAR FEE
D347	B 51.55	\$6000 (CSP) ¹
YEAR 12 PREREQUISITES		NON-YEAR 12 REQUIREMENTS
VCE units 1 and 2 – two units (any study combination) from general mathematics or mathematical methods (CAS) or VCE units 3 and 4 – mathematics (any). VCE units 3 and 4 – a study score of at least 30 in English (ESL) or 25 in any other English.		VTAC Personal History online.

This degree gives you a joint qualification in secondary teaching and arts, combining teaching studies with fields such as dance, drama, English, history, humanities, linguistics, literary studies, LOTE (Arabic, Mandarin Chinese and Indonesian), mathematics, media studies, music, social education, TESOL and visual arts.

Professional recognition

Successful completion of this course will meet the registration requirements for the Victorian Institute of Teaching and other state teacher registration boards in Australia.

Career opportunities

As a graduate you will be eligible for employment as a secondary teacher in Australia and overseas. You will be able to teach in secondary schools from junior secondary to VCE levels, as well as taking up positions in community and youth performance companies, TAFE and adult community educational institutions, private academies and agencies, community arts offices, government departments and private industries and services.

As a graduate of the Bachelor of Arts component of this course, you may also find employment in fields such as media and communication, photography, politics and policy studies, history, languages and visual arts.

Work-Integrated Learning

You are required to complete a minimum of 80 days supervised school experience over the duration of the course, providing invaluable hands-on experience in a classroom setting.

Work placement requirements

Please refer to the work placement requirements under the Bachelor of Education (Primary) on page 11.

Course structure

You must complete 32 credit points of study – 16 credit points from the Bachelor of Teaching (Secondary) and 16 credit points from the Bachelor of Arts, including a major sequence.

Level 1

EPP101 Teacher–Learner Identity

EPP102 Learning–Teaching Communities

plus 6 credit points of approved units from the Bachelor of Arts

Level 2

EEL201 Literacy Across the Curriculum

EPP207 Pedagogy

plus 6 credit points of approved units from the Bachelor of Arts

Level 3

EEH531 Promoting Student Wellbeing

EPP304 Ways of Knowing Children and Adolescents

Secondary curriculum study for second method area (two units)

plus 4 credit points of approved units from the Bachelor of Arts

Level 4

EEM401 Numeracy Across the Curriculum

EPP305 Policy, Schooling and Society

EPP406 Professional Identity and Curriculum Work

EXC440 Teaching for Diversity

Secondary curriculum study for first method area (two units)

plus two education elective units

You will select your major[^] and sub-major[^] studies in arts according to your chosen teaching method areas. The following teaching methods relate to the major sequences in the Bachelor of Arts and are available at the Melbourne Burwood Campus – two teaching methods are required for completion of the course.

- Dance
- Drama
- English (major sequence in children's literature or literary studies plus a part in linguistics (linguistics offered by School of Education))
- Humanities, societies and environments (SOSE) (major sequence in Australian studies, history, philosophy, politics and policy studies, sociology)
- LOTE (Languages other than English: major sequence in Arabic, Chinese, Indonesian)
- Mathematics
- Media (major sequence in film studies, media and communication, photography)
- Music (must have VCE music or Grade 6 AMEB equivalent)
- Psychology
- Teaching of English as a Second Language (TESOL)
- Visual arts

[^] For more information on these major sequences, refer to the 2014 Undergraduate Arts, Humanities and Social Sciences Career Booklet.

You can also undertake a double curriculum specialisation in one of the method areas listed below.

- Drama
- English
- Music
- Humanities, societies and environments (SOSE)
- Visual arts

Secondary curriculum studies units

DANCE

ECA431 Arts Education Discipline Study 1

ECA432 Arts Education Discipline Study 2

Note: ECA431/432 students to select dance specialism.

DRAMA

ECA431 Arts Education Discipline Study 1

ECA432 Arts Education Discipline Study 2

Note: ECA431/432 students to select drama specialism.

ENGLISH

ECL461 English Education A

ECL462 English Education B

HUMANITIES, SOCIETIES AND ENVIRONMENTS (SOSE)

ECS471 History and Humanities: Curriculum Study A

ECS472 History and Humanities: Curriculum Study B

> Continued on next page ...

COURSES

LANGUAGES OTHER THAN ENGLISH (LOTE)

ESJ457 Studies in Curriculum (LOTE A)

ESJ458 Studies in Curriculum (LOTE B)

Notes:

ESJ457 students to select the LOTE: curriculum study specialism.

ESJ458 students to select the LOTE: materials development specialism.

MATHEMATICS

ESM424 Mathematics: Curriculum Study

ESM425 Senior Mathematics: Curriculum Study

MEDIA

ECA435 Arts Education Discipline Study 5

ECA436 Arts Education Discipline Study 6

Note: ECA435/436 students to select media studies specialism.

MUSIC

ECA431 Arts Education Discipline Study 1

ECA432 Arts Education Discipline Study 2

Notes:

You must have VCE music or the equivalent of Grade 6 AMEB to undertake music method.

Students will enrol at Box Hill Institute as a cross-institution enrolment and undertake 6 credit points of study there, and then undertake the 4 credit point music specialism at Deakin.

ECA431/432 students to select music specialism.

PSYCHOLOGY

ESP202 Senior Psychology A: Curriculum Study

ESP203 Senior Psychology B: Curriculum Study

TEACHING OF ENGLISH AS A SECOND LANGUAGE (TESOL)

ESJ459 Studies in Curriculum (TESOL 7–10)

ESJ460 Studies in Curriculum (TESOL or senior chemistry)

Notes:

ESJ459 students to select the TESOL curriculum study A specialism.

ESJ460 students to select the TESOL curriculum study B specialism.

VISUAL ARTS

ECA431 Arts Education Discipline Study 1

ECA432 Arts Education Discipline Study 2

Note: ECA431/432 students to select visual arts specialism.

Double secondary curriculum studies units

DANCE

ECA433 Arts Education Discipline Study 3

ECA434 Arts Education Discipline Study 4

Note: ECA433/434 students to select dance specialism.

DRAMA

ECA433 Arts Education Discipline Study 3

ECA434 Arts Education Discipline Study 4

Note: ECA433/434 students to select drama specialism.

ENGLISH

ECL469 Language Development and New Technology

ECL470 Children's Literature in the Classroom

HUMANITIES, SOCIETIES AND ENVIRONMENTS (SOSE)

ECS420 Contemporary Global Issues in Social, Political and Environmental Learning

ECS421 Learning Beyond the Classroom: Local Communities

MUSIC

ECA433 Arts Education Discipline Study 3

ECA434 Arts Education Discipline Study 4

Note: ECA433/434 students to select music specialism.

VISUAL ARTS

ECA433 Arts Education Discipline Study 3

ECA434 Arts Education Discipline Study 4

Note: ECA433/434 students to select visual arts specialism.

Secondary elective units

ECA433 Arts Education Discipline Study 3

ECA434 Arts Education Discipline Study 4

ECL469 Language Development and New Technology

ECL470 Children's Literature in the Classroom

ECP303 Child Protection

ECS420 Contemporary Global Issues in Social, Political and Environmental Learning

ECS421 Learning Beyond the Classroom: Local Communities

EEG402 Teaching in a Global World

EET330 Teaching with New Technologies

ESH418 Issues in Health Education

ESH457 Youth and Recreation

ESM415 Problem Solving and Modelling in the Mathematics Classroom

ESM433 Exploring Space and Number

ESM438 Evaluating Children's Progress

ESP401 Student Behaviour Management and Welfare

ESP437 Teaching for Interpersonal Development

ESP485 Teaching Thinking Skills

ESS415 Resources in the Contemporary Science Curriculum

ESS439 Issues in Science and Environmental Education

EST430 Educational Software Tools 1

Professional experience units

Professional experience units are academic units that incorporate practicum.

The number of practicum days required for each unit is indicated below.

Level 1

EPP101 Teacher–Learner Identity (4 days)

EPP102 Learning–Teaching Communities (6 days)

Level 2

EPP207 Pedagogy (10 days)

Level 3

EPP304 Ways of Knowing Children and Adolescents (15 days)

EPP305 Policy, Schooling and Society (10 days)

Level 4

EPP406 Professional Identity and Curriculum Work (35 days)

For more information and to click through to unit descriptions, please visit deakin.edu.au/courses.

GRADUATE ENTRY AND PATHWAY TEACHING DEGREES

Graduate-entry degrees are suitable for graduates of other disciplines who want to gain a teaching qualification in applied learning, early childhood, primary or secondary education. Refer to course entries for specific details of selection and entry requirements.

For more information please visit deakin.edu.au/education.

BACHELOR OF EARLY CHILDHOOD EDUCATION (HONOURS) **1 B G W**

DEAKIN CODE	INDICATIVE FIRST YEAR FEE
E430	\$5870 (CSP) ¹

ADMISSION REQUIREMENTS

To be eligible for admission, applicants for the Bachelor of Early Childhood Education (Honours) will normally have achieved a distinction average or equivalent over the entire (four-year) undergraduate course. An individual interview will also be conducted with all honours applicants in order to clarify their research interest areas and to verify that supervision is feasible and the study area is relevant to early childhood education.

The Bachelor of Early Childhood Education (Honours) offers an opportunity for selected students, who have demonstrated academic merit and an ability to work independently, to undertake a year of honours study beyond the Bachelor of Early Childhood Education (or equivalent).

The honours year is a research-focused course, which extends the completed research work of the Bachelor of Early Childhood Education (or equivalent) and enables you to undertake research training that will equip you to plan, implement and evaluate a rigorous research study at honours level. You will be able to undertake a substantial and original research project, while being under the supervision of an academic with a proven research record. You will also develop skills and knowledge to identify contemporary issues in early childhood education and care. The honours research units are sequential and specifically designed to enable students to extend their research ability and understanding in the early childhood context, through the advanced research methodology units, literature review critiques and in the development and presentation of a minor thesis.

Professional recognition

This course is professionally accredited with the Australian Children's Education and Care Quality Authority (ACECOA) (subject to ACECOA approvals).

Career opportunities

There is an increasing demand for qualified and approved early childhood educators, teachers and researchers. Graduates of this course will have advanced knowledge and skills for professional research work and/or further learning in early childhood education. The skills and knowledge acquired will enhance students' future career prospects in a broad range of occupations in both private and public early childhood sectors. Opportunities also exist for employment in government agencies, preschool and school settings, community services or not-for-profit organisations. Following successful completion of this course, high-achieving students may be eligible to undertake PhD study.

Work-Integrated Learning

This course involves undertaking research in an early childhood setting.

Work placement requirements

Please refer to the work placement requirements under the Bachelor of Education (Primary) on page 11.

Course structure

You must complete 8 credit points of core units.

- EXR478 Theory in Education Research
- EXR479 Independent Reading Study
- EXR481 Education Research Methodology
- EXR491 Designing and Developing a Research Project
- EXR498 Minor Thesis Part A (2 credit points)
- EXR499 Minor Thesis Part B (2 credit points)

For more information please visit deakin.edu.au/education.



Hands-on learning is a key feature of many Deakin courses.

COURSES

GRADUATE DIPLOMA OF EDUCATION (APPLIED LEARNING)

DEAKIN CODE	INDICATIVE FIRST YEAR FEE
E690	\$5870 (CSP) ¹ \$15 560 (Fee) ²

ADMISSION REQUIREMENTS

You must have successfully completed a three-year bachelor's degree or an equivalent approved advanced diploma (combined with relevant work experience in your industry area). Professional or trade qualifications in one of the technology studies, vocational education and training (VET) or applied studies specialist teaching areas. A full list of admission requirements for this course is available at deakin.edu.au/study-at-deakin. Applications must be made directly to the University.

The Graduate Diploma of Education (Applied Learning) prepares teachers and other educators to work with young people in secondary schools, TAFE and Adult and Community Education (ACE) agencies, where the challenge is to adequately provide young people with knowledge, skills and values for a range of further study and employment pathways.

The program involves 10 weeks of intensive on-campus tutorials, which are delivered at the Geelong Wairn Ponds Campus. In between these tutorials, you will undertake a minimum of 45 days of professional experience placements in schools and other youth learning settings. You will use Deakin Studies Online (DSO) to continue your ongoing assignment work throughout the year.

Selection

Selection into the course will particularly target professionals and trade-qualified people considering teaching as a career change opportunity. People with broad qualifications considered to be relevant to the following specialist teaching areas are encouraged to apply for this course:

Technology studies

- Design and technology (includes wood, metal, plastics, fibres/yarns/fabrics, industrial ceramics)
- Food and technology
- Systems and technology (includes mechanical and electrical/electronic systems and subsystems).

Vocational Education and Training (VET)

- Agriculture, automotive, building and construction, business administration, small business practice, Cisco, community services, clothing products, dance, desktop publishing, electronics, engineering, equine industry, financial services, fitness, food processing (wine), food technology, furnishing, horticulture, hospitality (operations), information technology, laboratory skills, multimedia, the music industry, retail operations, the seafood industry, small business practice, sport and recreation.

Applied studies

- Arts, science, mathematics, English, careers, information technology, media, music, environmental studies, social studies, student welfare, visual communication.

The course is delivered through a mix of short intensive on-campus teaching blocks spread across summer, autumn and winter schools and intra-trimester weeks. Following each intensive teaching block you are located in a teaching work placement in a secondary school, TAFE institution or ACE agency. These off-campus work placements are between four to six weeks per trimester involving concentrated work-based learning forms of professional development and enquiry.

Professional recognition

Successful completion of this course will meet the registration requirements of the Victorian Institute of Teaching and other state teacher registration boards in Australia.

Career opportunities

As a graduate you may pursue a career in Australian and overseas secondary schools, TAFE institutions, adult community education, government departments, public service, health and welfare organisations, as well as in private academies and agencies.

Work-Integrated Learning

During the course you must complete at least 45 days of supervised teaching experience. Of these, 25 days must be completed in a secondary school setting. The remaining 20 days can be undertaken in secondary or alternative settings such as TAFE institutions and adult community educational institutions.

You are also required to complete 15 days of 'voluntary professional engagement', which may be undertaken without supervision but must demonstrate constructive contribution to the profession of teaching.

Work placement requirements

Please refer to the work placement requirements under the Bachelor of Education (Primary) on page 11.

Course structure

You must complete 8 credit points of study. In addition to successfully completing all of the course units and professional experience, students are required to have completed a Certificate IV in Training and Assessment (TAA) as a co-requisite to be eligible for graduation.

ECJ721 Introduction to Teaching in the Middle Years
ECJ722 Applied Learning in the Middle Years
ECJ723 Applied Learning in the Post-compulsory Education and Training Sector
EEE721 Youth Culture and Learning Pathways
EEE723 Partnership Development for Applied and Vocational Learning Programs
EEJ724 Teaching for Pathways into Tertiary Study
EEJ735 Teachers and Youth Literacy and Numeracy Engagement
EEY705 Secondary Placement (10 days)
EEY706 Applied Learning Placement (10 days)
EEY707 Applied Learning Placement (10 days)
EEY708 Secondary Placement (15 days)
EXE702 Becoming a Teacher in the 21st Century: The Personal, Professional and Political Challenges

For more information, please visit deakin.edu.au/education.

GRADUATE DIPLOMA OF TEACHING (PRIMARY) ¹ ^G

DEAKIN CODE	INDICATIVE FIRST YEAR FEE
E665	\$5870 (CSP) ¹ \$15 560 (Fee) ²

ADMISSION REQUIREMENTS

You must have successfully completed an approved degree or diploma (a minimum of three years duration) other than a Bachelor of Teaching. Priority for selection is based on Grade Point Average scores from the undergraduate degree. Applications must be made directly to the University.

This is an initial teacher education course to enable you to complete what is usually a one-year course of study in seven calendar months (full time from November to June).

It is a specialist qualification covering all areas of the primary curriculum, including English language, mathematics, science, arts, social education, health and physical education and technology.

The course is delivered on campus at the Geelong Warrn Ponds Campus, with one intake per year of full-time enrolment between November and June over two intensive trimesters. You will also participate in a highly rewarding professional experience program, spending a minimum of 45 days working in primary schools.

Professional recognition

Successful completion of this course will meet the registration requirements for the Victorian Institute of Teaching and other state teacher registration boards in Australia.

Career opportunities

As a graduate you will be eligible to teach in primary schools and you will also have transferable organisational, management, human resource management and training skills. Graduates of this program may find careers in Australia and overseas primary schools.

Work-Integrated Learning

You will participate in a highly rewarding Professional Experience Program, spending at least 45 days working in primary schools with children and alongside experienced teachers. You will have the opportunity to undertake professional experience overseas or in remote Northern Territory settings through our Global Experience Program.

Work placement requirements

Please refer to the work placement requirements under the Bachelor of Education (Primary) on page 11.

Course structure

You must complete 8 credit points of study.

Trimester 3 (commencing in November)

EEC710 Creating Challenging Learning Environments: Engaging Students
 EEH715 Effective Teaching and Learning: Health and Physical Education
 EEL745 Students' Learning of Language and Literacy
 EEM741 Planning and Assessing Effective Learning: Mathematics
 EEO731 Individuals and Social Contexts: The Humanities
Plus five days in schools (observation)

Trimester 1 (commencing in March)

EEA710 Individuals and Social Contexts: The Arts
 EEC711 The Teacher as Professional Educator
 EEP704 Professional Experience 1 (15 days)
 EEP705 Professional Experience 2 (15 days)
 EEP706 Professional Experience 3 (15 days)
 EES734 Planning and Assessing Effective Learning: Science and Technology

For more information, please visit deakin.edu.au/education.

[^] Intensive study.

MASTER OF TEACHING ² ^o ^B ^G ^X [◇]

DEAKIN CODE	INDICATIVE FIRST YEAR FEE
E760	\$5870 (CSP) ¹ \$15 560 (Fee) ²

ADMISSION REQUIREMENTS

Early childhood, primary and secondary strands: a bachelor's degree (or equivalent) in a discipline area other than education. The early childhood education strand is also available to applicants with a primary teaching degree. In addition, if you wish to teach in secondary schools you will require studies from disciplines that enable you to qualify for two single teaching methods.

The Master of Teaching has the flexibility of allowing you to gain a teaching qualification in early childhood, primary or secondary teaching, as well as the option of a dual qualification in early childhood and primary or primary and secondary. This option is only available if you study over two calendar years.

This course has been developed in response to the growing trend, nationally and internationally, of requiring postgraduate qualifications for entry into the teaching profession, and to offer a number of pathways into the profession. Students should note that they will need to complete at least 60 days of supervised professional experience in schools or other educational settings as part of this course. You will have the opportunity to exit the course after three trimesters with a Graduate Diploma of Teaching.

Professional recognition

Successful completion of this course will meet the registration requirements for the Victorian Institute of Teaching and other state teacher registration boards in Australia.

Career opportunities

As a graduate of the course you will be eligible to gain registration for teaching in primary or secondary school settings through the Victorian Institute of Teaching and/or become employed to teach in early childhood settings as listed as approved on the Victorian Government Gazette list.

You will also have transferable organisational, leadership, human resource management and training skills.

Work-Integrated Learning

During the course you must complete at least 60 days of supervised teaching experience in a school, early childhood setting or other educational settings.

Work placement requirements

Please refer to the work placement requirements under the Bachelor of Education (Primary) on page 11.

^o This course can be completed in 1.5 years if you undertake studies in Trimesters 1, 2, 3, and Trimester 1 in the following year, or in two years if you undertake studies in Trimesters 1 and 2 each year.

[◇] Off-campus students should note that this course is only available part time and that they are expected to take no more than two units per trimester. They should also note that the normal supervised school experience requirements apply.

> Continued on next page ...

COURSES

Course structure

You must complete 16 credit points of study, including six core units in education studies and professional experience, 6 credit points from one teaching strand and 4 credit points towards either a dual credential, internship, research pathway, applied learning or leadership of teaching program.

Level 1

EEE751 Teaching: Promoting Successful Learning
EEE752 Effective Planning and Assessment
EPR701 Planning for Learning in Professional Experience (5 days and 10 days)

Plus one of:

EPR702 Managing Teaching in Professional Experience (2 days per week x7 and a two-week block – 10 days)
EPR705 Managing Teaching in Professional Experience[^] (25 days)
plus four core strand units relating to strand choice, see below.

[^] EPR705 is only for students undertaking a dual credential with strands in early childhood education and primary education.

Note: After completion of Trimester 1 and Trimester 2 studies, you must nominate your additional trimester preferences and consult with enrolment officers regarding your next trimester enrolment.

Level 2

EEE753 Becoming a Professional Educator

Plus one of:

EPR703 Reflecting on Practice in Professional Experience (25 days)
EPR706 Reflecting on Practice in Professional Experience^{^^} (45 days)
EPR707 Reflecting on Practice in Professional Experience (31 days)
Plus two core strand units relating to strand choice, see below.

^{^^} EPR706 is only for students undertaking a dual credential with strands in early childhood education and primary education.

Core strand units

EARLY CHILDHOOD B G

ECE761 Early Childhood Pedagogy, Curricula and Programmes
ECE762 Language and Literacy
ECE763 Science and Environmental Awareness
ECE764 Young Children's Mathematics
ECP711 Creativity and the Arts in Early Childhood
ECP712 Social, Physical and Emotional Health and Wellbeing

PRIMARY B X

ECP711 Creativity and the Arts in Early Childhood
ECP712 Social, Physical and Emotional Health and Wellbeing
EPL746 Primary Literacy
EPM742 Primary Children's Mathematical Development
EPO701 Primary Humanities, Societies and Environments
EPS735 Primary Science and Technology Education

SECONDARY B X

Students enrolled in the secondary strand must complete:

EEH730 Promoting Student Wellbeing

Plus one of:

EXC735 Teachers and Youth Literacy and Numeracy Engagement
EXC725 Literacy and Numeracy Across the Curriculum

Plus two secondary curriculum studies units (teaching levels 7–10) and two secondary curriculum studies units (teaching levels 11–12) in two discipline areas (e.g. in history and geography; or science and maths; or English and drama etc.) from:

Burwood*

Biology, chemistry, commerce and business studies, dance, drama, English, ESL (TESOL), environmental science, geography, health, history, humanities, societies and environment (SOSE), LOTE, mathematics, media studies, music, science, visual arts.

Off campus*

Biology, chemistry, commerce and business studies, English, environmental science, geography, health, history, humanities, societies and environment (SOSE), mathematics, music, science, visual arts.

* Subject to availability and demand.

Secondary curriculum studies units

BIOLOGY B X

ESS744 Science: Curriculum Study
ESS767 Senior Biology: Curriculum Study

CHEMISTRY B X

ESJ760 Studies in Curriculum (TESOL or Senior Chemistry)
ESS744 Science: Curriculum Study

COMMERCE AND BUSINESS STUDIES B X

ECB704 Commerce and Business Studies: Curriculum Study B (Year 11–12)
ECS771 History and Humanities: Curriculum Study A

DANCE[#] B

ECA731 Arts Education Curriculum Study 1
ECA732 Arts Education Curriculum Study 2

Note: ECA731/ECA732 students to select dance specialism.

DRAMA[#] B

ECA731 Arts Education Curriculum Study 1
ECA732 Arts Education Curriculum Study 2

Note: ECA731/ECA732 students to select drama specialism.

ENGLISH B X

ECL761 English Education A
ECL762 English Education B

ENVIRONMENTAL SCIENCE B X

ESS741 Science and Environmental Sustainability: Curriculum Study (Years 7–10)
ESS742 Senior Environmental Science: Curriculum Study

HEALTH B

ESH702 Health Education: Curriculum Study
ESH703 Senior Health and Human Development: Curriculum Study

HUMANITIES, SOCIETIES AND ENVIRONMENTS (SOSE) B X

ECS771 History and Humanities: Curriculum Study A
ECS772 History and Humanities: Curriculum Study B

LANGUAGES OTHER THAN ENGLISH (LOTE)[#] B

ESJ757 Studies in Curriculum (LOTE A)
ESJ758 Studies in Curriculum (LOTE B)

For the latest information about new courses at Deakin University, please visit deakin.edu.au.

MATHEMATICS **B X**

ESM724 Mathematics: Curriculum Study
 ESM725 Senior Mathematics: Curriculum Study

MEDIA/FILM# **B**

ECA735 Arts Education Curriculum Study 5
 ECA736 Arts Education Curriculum Study 6

Note: ECA735/ECA736 students to select media/film specialism.

MUSIC **B X**

ECA731 Arts Education Curriculum Study 1
 ECA732 Arts Education Curriculum Study 2

Note: ECA731/ECA732 students to select music specialism.

SCIENCE **B X**

ESS744 Science: Curriculum Study
 ESS755 Resources in the Contemporary Science Curriculum

TEACHING OF ENGLISH AS A SECOND LANGUAGE (TESOL)# **B**

ESJ759 Studies in Curriculum (TESOL 7–10)
 ESJ760 Studies in Curriculum (TESOL or Senior Chemistry)

VISUAL ARTS **B X**

ECA731 Arts Education Curriculum Study 1
 ECA732 Arts Education Curriculum Study 2

Note: ECA731/ECA732 students to select visual arts specialism.

Only available on campus.

Double secondary curriculum studies units

HUMANITIES, SOCIETIES AND ENVIRONMENTS (SOSE) **B X**

ECS771 History and Humanities: Curriculum Study A
 ECS772 History and Humanities: Curriculum Study B
 ECS720 Contemporary Global Issues in Social, Political and Environmental Learning
 ECS721 Learning Beyond the Classroom: Local Communities

MUSIC **B**

ECA731 Arts Education Curriculum Study 1
 ECA732 Arts Education Curriculum Study 2
 ECA733 Arts Education Curriculum Study 3
 ECA734 Arts Education Curriculum Study 4

Note: ECA731/ECA732/ECA733/ECA734 students to select music specialism.

VISUAL ARTS **B X**

ECA731 Arts Education Curriculum Study 1
 ECA732 Arts Education Curriculum Study 2
 ECA733 Arts Education Curriculum Study 3
 ECA734 Arts Education Curriculum Study 4

Note: ECA731/ECA732/ECA733/ECA734 students to select visual arts specialism.

Level 2

You must undertake one of the following:

APPLIED LEARNING **X**

ECJ722 Applied Learning in the Middle Years
 ECJ723 Applied Learning in the Post-compulsory Education and Training Sector
 ECJ724 Teaching for Pathways into Tertiary Study
 EXE703 Partnership Development for Applied and Vocational Learning Programs

INTERNSHIP **B G X**

EPR704 Postgraduate Internship (4 credit points)

LEADERSHIP OF TEACHING **B G X**

ELT711 Theories and Models of Leadership: Introduction
 ELT712 Leading Learning Communities
 ELT713 Researching the Leadership of Teaching
 ELT714 Leadership of Teaching – Portfolio

RESEARCH PATHWAY **B X**

EXR781 Education Research Methodology
 EXR791 Designing and Developing a Research Project
 EXR796 Research Paper Part A
 EXR797 Research Paper Part B

Additional strand (dual credential)

Select four core units in a second strand.

Note: The strands in primary and secondary will be available on campus at the Melbourne Burwood Campus and in off-campus mode. The early childhood strand commences on campus at the Melbourne Burwood Campus, and Geelong Warrn Ponds Campus in community-based mode, i.e., a combination of intensive and online study. Not all secondary methods will be available at the Melbourne Burwood Campus or in off-campus mode.

- 1 The indicative first year fee is an approximate indication of the cost of this course in the first year of full-time study for a Commonwealth Supported Place (CSP). We can't specify the exact figure, because fees are charged per unit, not per course, so the actual fees may vary depending on what units you choose to study.

The fees quoted in this booklet are for Australian students in 2013, and may change for 2014 and later years. You can find more information about fees on our website at deakin.edu.au or at studyassist.gov.au. For information on fees for international students, please visit deakin.edu.au/international.

- 2 Full fee-paying courses require students to contribute the full cost of their course. A loan program, FEE-HELP, is available to assist eligible domestic fee-paying students to pay their tuition fees. For more information regarding fees, please phone 1300 DEGREE (1300 334 733). Undergraduate degrees have CSPs available for domestic students. Applicants for these courses need to apply through the applicant portal, <http://applicantportal.deakin.edu.au/connect/webconnect>.

For more information and to click through to unit descriptions, please visit deakin.edu.au/courses.

Continue your learning with postgrad at Deakin.

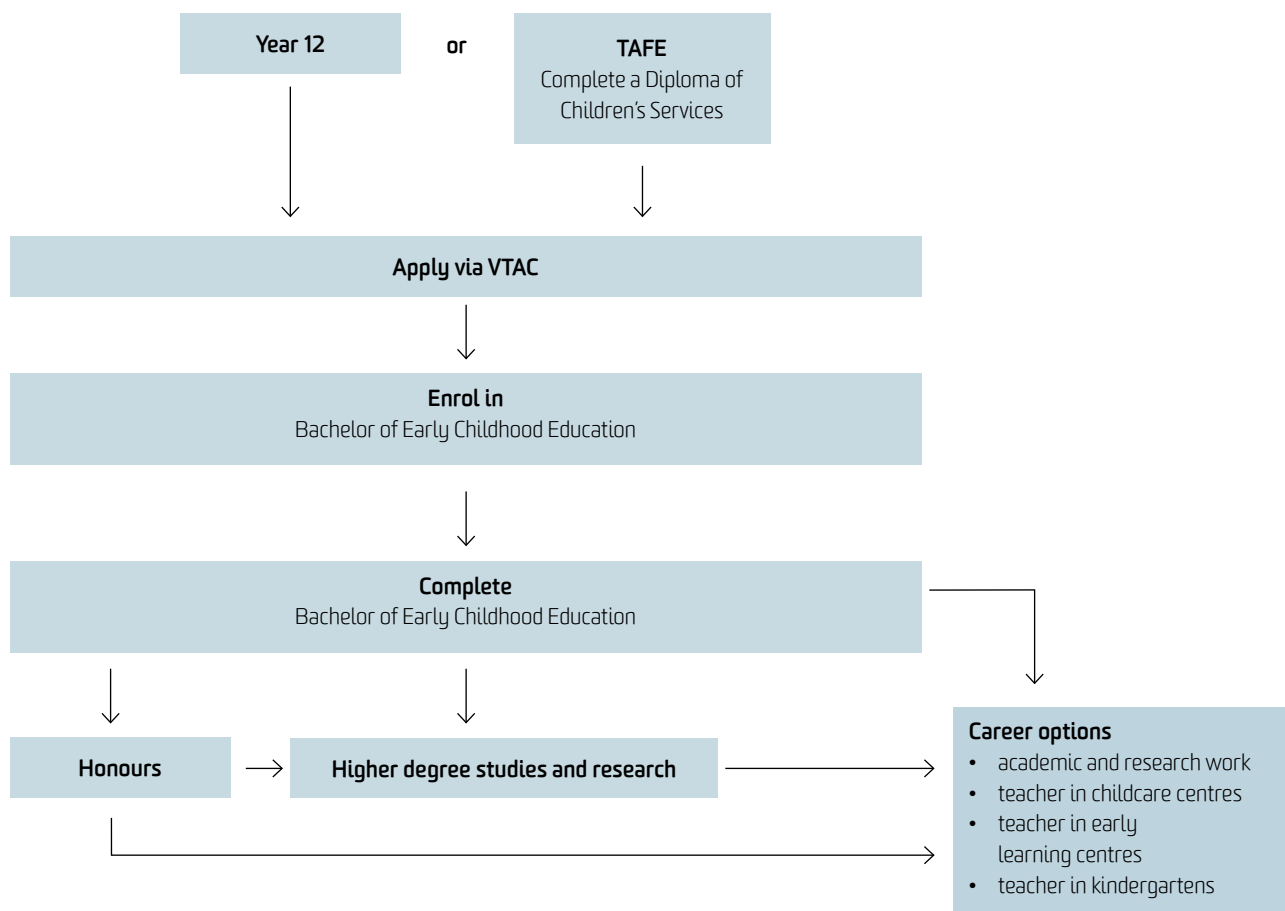
Visit deakin.yt/postgrad-at-deakin to watch a YouTube video.

PATHWAYS



Pathway programs provide alternative entry options that take into consideration previous qualifications or your time in the workforce. Deakin has pathway options for a range of applicants including current Year 12 students, International Baccalaureate (IB) students and non-school leavers.

The diagram below shows the pathway options for the Bachelor of Early Childhood Education. Please note the entry requirements for this course are different to other Deakin education courses.



Please note applicants are subject to entry requirements.
For more examples of pathways into Deakin University, please visit deakin.edu.au/pathways.



DID YOU KNOW?

Deakin offers a range of scholarships to support students in their studies. For more information, please visit deakin.edu.au/scholarships.

TAFE pathways

If you complete a diploma or advanced diploma at TAFE in a field similar to the Deakin course of your choice, you can then apply for the Deakin course and you may receive credit for your TAFE qualification. In most cases, this will reduce the number of units you need to complete to obtain your Deakin qualification. Plus, upon graduation, you'll have not one, but two qualifications.

Deakin has formal pathway programs and special credit arrangements with its four partner TAFEs (Box Hill Institute and Chisholm in Melbourne, South West TAFE in Warrnambool and The Gordon in Geelong) however all TAFE qualifications are considered for application to Deakin.

If you have completed a diploma or an advanced diploma, you may be eligible for block credit towards a related Deakin degree. Block credit is defined in the Australian Qualifications Framework as 'credit granted towards whole stages or components of a program of learning leading to a qualification'. This can be made up of specified credit (credit matched to individual units) and/or unspecified credit (credit that may be granted towards non-core or elective units). If you have undertaken a TAFE diploma or advanced diploma, you will generally be able to gain the following block credit (unspecified) towards your Deakin degree:

- diploma course: up to 8 credit points (equivalent to one [1] year of study at Deakin) into a bachelor's degree
- advanced diploma and associate degree courses: up to 12 credit points (equivalent to one and half [1.5] years of study at Deakin) into a bachelor's degree.

Specified credit will be considered on a case-by-case basis and should be discussed with your enrolment officer when you are enrolling. To find out more about the credit you may be entitled to, please visit deakin.edu.au/courses/credit.

For more information on pathways into Deakin University, please visit deakin.edu.au/pathways.

Deakin's Associate Degree of Arts, Business and Sciences

The Associate Degree of Arts, Business and Sciences (Deakin at Your Doorstep), is a two-year, full-time (or part-time equivalent), 16-credit-point program, specifically designed for students who would benefit from a supported entry to tertiary study.

The associate degree course structure provides flexible pathways into tertiary education and can be used as a guaranteed pathway into a range of Deakin degrees at the Warrnambool Campus, Geelong Waterfront Campus, Geelong Warrnambool Campus or off campus. The degree may also be taken as a stand-alone, two-year exit qualification.

Students studying the associate degree at one of our partner TAFE campuses – Advance in Bairnsdale, Chisholm in Dandenong and Rosebud, Kangan Institute at Hume Global Learning Centre in Craigieburn, Sunraysia in Swan Hill, GOTAFE in Wangaratta and South West TAFE in Portland – will study the course concurrently with a diploma qualification.

The Deakin at your Doorstep program also offers the Bachelor of Early Childhood Education. You can study this course at Dandenong, Portland, the Mornington Peninsula and Swan Hill.

For more information, please visit deakin.edu.au/doorstep.

Single unit (non-award) study

You may wish to undertake a single unit of study at Deakin (without being enrolled or accepted into a course). These units are subject to fees and do not lead to a degree, but may be credited towards a degree if you succeed in gaining entry to a course at a later stage.

For more information, please visit deakin.edu.au/study-at-deakin/apply/other-types-of-application/apply-for-a-single-subject.

Choice of campus

One of the great things about Deakin is that we have four campuses throughout Victoria. Many of our courses are offered at more than one campus and the ATAR required for each campus often differs, but the same high-quality degree is delivered no matter which campus you study at. This provides you with more entry options and enables you to transfer your studies from one campus to another.

HOW TO APPLY



JAMES KALLSTROM

BACHELOR OF EDUCATION (PRIMARY)
MELBOURNE BURWOOD CAMPUS

'I chose this field because teaching as a profession offers opportunities to work in different locations both around Australia and overseas. In particular I would like to teach in Japan to extend my knowledge of the language and culture.

I chose to study at Deakin because the education course felt most suited to my interests, which include history, environmental sciences, health and physical education. The diversity of subjects within the education course creates an interesting and challenging environment.

At uni I undertook a work placement that gave me the opportunity to experience teaching in a small rural school. This involved observing teaching and learning from prep to Grade 6, as well as participating in classroom activities in a teaching role. It provided a great insight into what is expected of teachers and was a very enjoyable time.

What I enjoy most about uni and my course is that the tutors have all been helpful and easy going, which creates a fun learning environment.'

Applying to study at Deakin University is easy. Whether you are a current Year 12 student, TAFE graduate, mature-age student, non-school leaver, or international student studying VCE in Australia, you can apply to study a Deakin undergraduate course through the Victorian Tertiary Admissions Centre (VTAC) (unless stated otherwise in the VTAC CourseSearch www.vtac.edu.au or under the individual course entries in this booklet).

When you are applying for a course, make sure you check all of the entry requirements carefully. Most courses have prerequisites and some have additional requirements that you will need to complete to be eligible for selection into that course. For prerequisite and extra requirement information, please visit the VTAC website www.vtac.edu.au.

For more information on how to apply, including special consideration and deferment, please visit deakin.edu.au/study-at-deakin/apply.

DID YOU KNOW?

If your application to study at Deakin is successful but it's not the right time for you to commence university, you can defer your studies in most Deakin courses for up to two years. This means you can postpone your studies to work, travel or volunteer and still retain your university place. For more information, please visit deakin.edu.au/study-at-deakin/apply/enrol-defer-withdraw-or-transfer.



FIND OUT MORE

Talk to us

For more information, phone 1300 DEGREE (1300 334 733) to speak with a course adviser. You can also contact us via email at enquire@deakin.edu.au.

Website

Deakin on the web, deakin.edu.au, contains detailed information on everything at Deakin, including:

- courses
- fees
- campuses
- facilities and services
- applications and scholarships
- events and activities for VCE, TAFE and non-school leavers
- student profiles.

To search for courses and click through to unit descriptions visit deakin.edu.au/courses or deakin.edu.au/handbook.

School of Education: deakin.edu.au/education.

Other useful websites

Future students

deakin.edu.au/study-at-deakin

Subject information

deakin.edu.au/handbook

Campuses

deakin.edu.au/campuses
deakin.edu.au/tour

Clubs and societies

dusa.org.au/pages/clubs

Scholarships

deakin.edu.au/scholarships

Services and facilities

deakin.edu.au/campus-life/services-and-facilities

VTAC

www.vtac.edu.au

Study Assist

studyassist.gov.au

Social media@Deakin

Connect with Deakin University on Facebook, Twitter and YouTube. Talk with other future students and ask current students and staff about life and study at Deakin.

facebook.com/DeakinUniversity

twitter.com/DiscoverDeakin

youtube.com/DeakinUniversity

Visit us

There are many opportunities throughout the year to visit Deakin, experience a campus tour and talk with representatives face-to-face.

To organise a campus tour and presentation for an individual or group, please phone:

Geelong 03 5227 8525

Melbourne 03 9246 8063

Warrnambool 03 5563 3444

or email future-students@deakin.edu.au.

For our 2013 Open Day dates, see the back cover of this booklet.

For more information on event dates visit deakin.edu.au or phone 1300 DEGREE (1300 334 733).

Victorian Tertiary Admissions Centre (VTAC)

Contact VTAC for information about:

- the application process
- VCE prerequisites
- extra requirements
- middle-band selection
- clearly-in ATARs
- fees
- Special Entry Access Schemes (SEAS).

www.vtac.edu.au

Further reading

Deakin University produces a range of booklets to help you choose the right course. These include:

- *2014 Undergraduate Course Guide*
- *Accommodation Guide 2014*
- *Introduction to University Guide*
- *Pathways to Deakin 2014*
- *Parents' magazine*
- *Off-Campus Course Guide 2014*
- *University handbook 2013*
deakin.edu.au/study-at-deakin/find-a-course/university-handbook (online only)
- *Deakin at Your Doorstep* (Associate Degree of Arts, Business and Sciences)
- 2014 undergraduate career booklets
- postgraduate course information.

You can download copies of these brochures at deakin.edu.au/course-guides or to request copies of any of the above, email enquire@deakin.edu.au or phone 1300 DEGREE (1300 334 733).

Deakin University also produces course guides specifically for international students. To request a copy phone Deakin International on +61 3 9627 4877 or email deakin-international@deakin.edu.au.

IMPORTANT DATES 2013

DEAKIN EVENTS

Sunday 4 August

Open Day
Warrnambool Campus

Sunday 11 August

Open Day
Geelong Warrn Ponds Campus and
Geelong Waterfront Campus

Sunday 25 August

Open Day
Melbourne Burwood Campus

Deakin will hold additional events for prospective students and parents. Please visit deakin.edu.au/study-at-deakin for updates.

APPLICATION DATES

Trimester 1

Early August*

VTAC applications open

Late September*

Timely VTAC applications close

Mid November*

Late VTAC applications close (late fee applies)

Mid December*

Very late VTAC applications close (very late fee applies)

December

Change of Preference

Please check the Deakin University Change of Preference website closer to the date for specific event details, deakin.edu.au/cop.

* Please check the VTAC website www.vtac.edu.au closer to the time for specific dates.

Trimester 2 and 3

Trimester 2 applications open in April and

Trimester 3 applications open in August.

Course availability and places may be limited.

Please visit deakin.edu.au/apply closer to the time for more information and specific dates.

CAREER EXPOS

Melbourne

Thursday 2–Sunday 5 May

The Age VCE Careers Expo

Saturday 1–Sunday 2 June

Melbourne – Reinvent Your Career Expo

Friday 16–Sunday 18 August

Herald Sun Careers Expo

Interstate

Saturday 23–Sunday 24 March

Brisbane – Reinvent Your Career Expo

Sunday 12–Monday 13 May

Adelaide – Tertiary Studies and Careers Expo

Thursday 16–Sunday 19 May

Perth – Careers, Education and Employment Expo

Saturday 20–Sunday 21 July

Brisbane – The Tertiary Studies Expo (TSXPO)

Saturday 21–Sunday 22 September

Sydney – Reinvent Your Career Expo

VTAC OFFERS

Late November*

Early round offers

Mid to late January 2014*

Round 1 offers

Mid to late January 2014*

Negotiated offers (irregular offers)

Early February 2014*

Round 2 offers

* Please check the VTAC website www.vtac.edu.au closer to the time for specific dates.

Box Hill Institute CRICOS Provider Code: 02411J
Chisholm Institute of TAFE CRICOS Provider Code: 00881F
Gordon Institute of TAFE CRICOS Provider Code: 00011G
Kangan Institute CRICOS Provider Code: 01218G
Melbourne Institute of Business and Technology (MIBT) CRICOS Provider Code: 01590J
South West Institute of TAFE CRICOS Provider Code: 01575G
Sunraysia Institute of TAFE CRICOS Provider Code: 01985A



MORE INFORMATION | EDUCATION

1300 DEGREE (1300 334 733) | enquire@deakin.edu.au | deakin.edu.au/education

2013 DEAKIN UNIVERSITY OPEN DAYS

04.08.13

WARRNAMBOOL CAMPUS

Princes Highway
Warrnambool Victoria

11.08.13

GEELONG WAURN PONDS CAMPUS

75 Pigdons Road
Waurm Ponds Victoria

GEELONG WATERFRONT CAMPUS

1 Gheringhap Street
Geelong Victoria

25.08.13

MELBOURNE BURWOOD CAMPUS

221 Burwood Highway
Burwood Victoria

deakin.edu.au

Published by Deakin University in March 2013. While the information published in this guide was accurate at the time of publication, Deakin University reserves the right to alter, amend or delete details of course offerings and other information published here. For the most up-to-date course information please view our website at deakin.edu.au.

Deakin University CRICOS Provider Code: 00113B