



DEAKIN
UNIVERSITY AUSTRALIA

PSYCHOLOGY

UNDERGRADUATE

| MELBOURNE | GEELONG | WARRNAMBOOL | OFF CAMPUS

2013



PSYCHOLOGY

Discover psychology at Deakin University

Psychology is a scientific discipline which studies the mind and its processes, behaviour and mental states.

There is a heightened emphasis on mental health in the modern world. A large area of research and research training in Deakin's School of Psychology is focused on mental health outcomes for the people outside the mainstream, targeting those less likely to access treatment and those at risk of chronic and severe mental ill health.

Our psychology courses are community-relevant, solution-focused and aim to contribute to the production of high-quality, professional practitioners, who are adequately equipped to work in a broad range of settings and contexts.

As a Deakin psychology student, you will have flexible study options and the ability to gain hands-on industry experience, preparing you for employment in the real world. Our courses are informed by advisory boards, which ensure the curriculum we deliver produces graduates who are suited to the jobs they will do.

Each of the psychology courses offered at Deakin meet the requirements of the Psychology Board of Australia (PBA) and the Australian Psychological Society (APS).

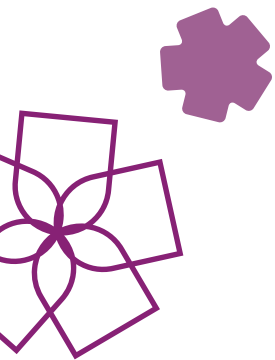
This booklet will tell you about the undergraduate courses we offer in psychology, their key features and the career opportunities you can expect from completing a psychology degree at Deakin.

Choosing a university course is an important decision – and we are here to help. We encourage you to gather as much information as possible to help you make an informed decision about which course is best for you.

If you need more information, please contact us on 1300 DEGREE (1300 334 733), email enquire@deakin.edu.au or visit deakin.edu.au.

We look forward to seeing you at Deakin!

The Deakin team



Finding more information

2013 Undergraduate Course Guide

This guide provides an overview of the undergraduate courses Deakin offers, and information about how to apply, our campuses, student services and study options, such as part time and off campus.

To order a copy of this or any other brochure, phone 1300 DEGREE (1300 334 733).

To view brochures online visit deakin.edu.au/future-students/brochures.

2013 undergraduate career booklets

Deakin has a range of undergraduate career booklets which provide more information on areas of study, career opportunities, course overviews and course structures. These career booklets are available in the following areas:

- » architecture and built environment
- » arts, humanities and social sciences
- » business
- » education
- » engineering
- » environment
- » health
- » information technology
- » law
- » nursing and midwifery
- » optometry
- » psychology (this booklet)
- » science
- » sport.

Undergraduate eBrochure

Find out more in our new interactive eBrochure available from deakin.edu.au/ebrochure/undergrad, the Apple App Store and Google play.



Social media @Deakin

Connect with other future students and ask current students and staff about life and study at Deakin.

[facebook.com/discoverdeakin](https://www.facebook.com/discoverdeakin)

twitter.com/discoverdeakin

[youtube.com/discoverdeakin](https://www.youtube.com/discoverdeakin)



Website

Deakin's website offers comprehensive course and fee information including details of new courses, campuses, facilities and support services. Visit deakin.edu.au.

To search for courses and click through to unit descriptions visit deakin.edu.au/courses.

Contact us

Phone 1300 DEGREE (1300 334 733) to speak with a student adviser. You can also contact us via email at enquire@deakin.edu.au.

There are many opportunities throughout the year to visit Deakin, experience a campus tour and talk with representatives face-to-face.

For more information on event dates visit deakin.edu.au. 2012 Open Day dates are listed on the back cover of this booklet.

Contents



Using this booklet

This booklet provides you with detailed information about Deakin's undergraduate courses in psychology (for domestic students), including study areas, career opportunities, course overviews and course structures. It is designed to be read in conjunction with the *2013 Undergraduate Course Guide*, which gives an overview of all of Deakin's undergraduate courses, study options, support services and campuses.

Deakin University also produces course guides specifically for international students. To request a copy phone Deakin International on 03 9244 5095.

2 Psychology at Deakin

- 3 Where do our graduates go?
- 4 Pathways to full registration
- 5 Courses and ATARs table
- 5 Major study areas

6 Courses

- 13 How to apply

14 Entry options

17 Find out more

- 17 Important dates 2012

Psychology at Deakin

Vast employment opportunities

Studying psychology at Deakin gives you entry into one of the fastest growing and most diverse professional fields in Australia and around the world. Whether you complete a basic degree in psychology or go on to postgraduate study, you will develop the knowledge and skills that make you highly employable across an array of stimulating employment settings. These include, but are not limited to, mental health, neuroscience, human services, public health, criminal justice, human resources management, organisational development, public relations, education and child development.

Flexible study options

In addition to traditional face-to-face teaching, all undergraduate psychology subjects are taught in online/off-campus mode, and can be taken as part of a full-time or part-time degree. You can take advantage of this flexibility to study psychology when, where, and how you like, and fit your study in with your work and personal commitments.

Fast-track your degree

Undergraduate psychology is taught across each of Deakin's trimesters. By taking advantage of the subjects offered in Trimester 3, you can fast-track your studies to complete a three-year degree in psychology in just two years of full-time study, meaning you can gain registration and start your career sooner.

Get ready for the workforce

Work readiness is a key feature of psychology at Deakin. As an undergraduate psychology student you have the opportunity to undertake relevant work experience in psychology and participate in transition-to-work activities such as developing a professional portfolio, writing a resume and interviewing skills.

Industry-relevant courses

Deakin's School of Psychology has strong partnerships with industry, involving collaborative activities with government agencies, public and private organisations, hospitals and other universities. These partnerships ensure that our courses remain relevant to industry and workforce needs.

Experienced and enthusiastic staff

Our lecturers are well qualified, enthusiastic teachers and researchers with broad local and international links and experiences. You will learn from academic staff who are internationally recognised researchers with specialist skills developed through their work with outside agencies, their research and community involvement. This experience reflects and informs our teaching programs.

Research that makes a difference

The School of Psychology's teaching is underpinned by excellence in research across a range of fields, including cognitive and behavioural neuroscience, social psychology, developmental psychology, forensic psychology, organisational psychology and clinical psychology. In particular, research reflects clinical, health and forensic issues; industrial and organisational psychology; human factors; and quality of life.

Professional recognition

All of Deakin's undergraduate and postgraduate psychology courses are accredited by the Australian Psychology Accreditation Council (APAC) and are recognised for the purposes of registration by the Psychology Board of Australia (PBA). This high level of accreditation translates into excellent job and career opportunities for Deakin psychology graduates.

Study where you want to live

The School of Psychology offers psychology courses across all campuses: the Melbourne Burwood Campus, the Geelong Waterfront Campus, the Geelong Warrn Ponds Campus and the Warrnambool Campus, as well as providing off-campus study options.

Scholarships

Deakin University offers scholarships for academic excellence, access and equity, accommodation and Aboriginal and Torres Strait Islanders, ensuring higher education is accessible for all members of the community. For more information on scholarships, please visit deakin.edu.au/scholarships.

Scholarships are also available through the Nursing and Allied Health Scholarship and Support Scheme (NAHSSS). For more information about this scheme please contact Services for Australian Rural and Remote Allied Health by email sarah@sarah.org.au or visit www.sarah.org.au.

Study abroad

Give your degree a competitive edge with a Deakin Study Abroad Program. The Study Abroad and Exchange Office offers various programs including exchange, study abroad, short-term study programs, study tours and international volunteering opportunities which allow you to study overseas for a few weeks, a trimester, or a year as part of your Deakin degree.

For more information on study abroad, please visit deakin.edu.au/future-students/student-exchange/exchange.

DID YOU KNOW?

First year graduate salaries in psychology or health-related disciplines range between \$45 000 and \$80 000 plus, depending on your experience and chosen work area.

Where do our graduates go?

After completing an undergraduate psychology degree you may seek employment or undertake further studies in the pursuit of full registration. Qualified psychologists can work in a variety of settings including clinical, forensic, organisational, educational, health, rehabilitation, sport, and many other specialist areas. The contexts in which you can work are just as varied, including private practice, hospitals, business organisations, schools, universities, government agencies, community sport and various research groups.

Recent Deakin psychology graduates have been employed by a range of organisations including, but not limited to, the following:

- » Alzheimer's Australia
- » Australian Unity
- » Barwon Health
- » Bellarine Psychology
- » Box Hill Hospital
- » Cancer Council
- » Centre for Behavioural Research in Cancer
- » Centrelink
- » Clinical Services, Office of Corrections
- » CRS Australia
- » Department of Education
- » Department of Human Services
- » Department of Justice
- » Geelong Football Club
- » Inner East Mental Health Services
- » Monash IVF Private Hospital
- » Olympic Park Sports Medicine Centre
- » People at Work
- » Private schools
- » Specialised children's services
- » Youth Substance Abuse Service.



Lecture theatre at the Melbourne Burwood Campus.

Pathways to full registration

The current requirements for registration as a provisional psychologist include the completion of four years of academic study of psychology that is recognised by the Psychology Board of Australia (PBA).

The academic program usually consists of an approved three-year undergraduate psychology sequence – such as Deakin's Bachelor of Applied Science (Psychology) or Bachelor of Health Sciences (major sequence in psychology) – followed by an approved fourth-year of study (such as Deakin's Graduate Diploma of Psychology or honours in psychology).

Following successful completion of an approved fourth-year of psychology study, you may apply for provisional registration with the Psychology Board of Australia (PBA) and associate membership of the Australian Psychological Society (APS). Deakin's Bachelor of Psychology can lead directly to provisional registration provided the honours year is completed within this four-year course.

In order to gain full registration, provisional psychologists must then complete either two years of supervised practice, or a minimum two years of further study, which may include a Master of Psychology, Doctor of Psychology or a Doctor of Philosophy (PhD) (with supervised practice completed outside the degree). It is at this stage that you can specialise in a particular area of psychology that appeals to your interests and career aspirations.

Deakin offers psychology courses for every stage of your pathway to registration.



STUDENT SNAPSHOT



Kate Dennis
Bachelor of Applied Science (Psychology)
and Bachelor of Criminology
Geelong Waurn Ponds Campus
DUSA Vice-President

'Deakin has inspired me not to limit my choices. The tutors and lecturers are so encouraging, and they have supported me and always been there to discuss my future plans and options.'

Through the Deakin University Student Association (DUSA) I've also had the opportunity to become involved in student life – I'm the Vice-President for 2012 and work across all of Deakin's campuses.'

Courses and ATARs table

	Melbourne Burwood Campus	Geelong campuses	Warrnambool Campus	Off campus	
	Clearly-in ATAR 2012	Clearly-in ATAR 2012	Clearly-in ATAR 2012	Available	Page
Bachelor of ...					
Applied Science (Psychology) H344	68.30	NEW*	NEW*	Yes	6
Psychology H345	80.30	74.20	63.80		8
Health Sciences H300	71.15	55.90	50.30		10
<i>Psychology major sequence</i>					
Combined courses					
Bachelor of ... / Bachelor of ...					
Nursing/Applied Science (Psychology) D387	80.70	71.75	54.85		11
Health Sciences/Arts D391	73.65				12

Geelong campuses = Geelong Waurn Ponds Campus and Geelong Waterfront Campus.

NEW = planned to commence in 2013.

* Subject to University approval.

If a clearly-in ATAR is not listed it means that the course is not available at that campus.

For more information on ATARs please visit deakin.edu.au/future-students/year12.

Major study areas

Psychology at Deakin will provide you with a strong foundation in areas such as: the assessment of personality and cognitive abilities; the factors that underpin successful interpersonal relationships and group processes; and the major determinants of individual and social mental health and wellbeing.

In order to study psychology at Deakin, you can enrol in the Bachelor of Applied Science (Psychology) at the Melbourne Burwood Campus or the Bachelor of Psychology at the Melbourne Burwood Campus, the Geelong Waurn Ponds Campus or the Warrnambool Campus. The Bachelor of Psychology offers an honours program in the fourth year of the course.

You can also complete an accredited major sequence in psychology as part of your Bachelor of Health Sciences degree.

For a list of the undergraduate psychology study options offered at Deakin, refer to the table above.

Courses

Bachelor of Applied Science (Psychology) 3 B G* W* X*

Deakin code	VTAC code	Indicative first year fee	ATAR
H344	14231 (CSP)	\$6380 (CSP) ¹	B 68.30 G NEW* W NEW* X NEW*
Year 12 prerequisites	VCE units 3 and 4 – a study score of at least 30 in English (ESL) or 25 in any other English.		
Non-Year 12 requirements	VTAC Pi form. Some applicants only: STAT Multiple Choice.		

Psychology is concerned with understanding human personality, behaviour, emotion, underlying mental processes and the factors which lead people to differ in the way they think and behave. Throughout this course you will be exposed to an integrated approach to psychology which covers areas including behavioural and clinical neuroscience, child and adolescent psychology, relationships and the psychology of groups, personality, cognitive psychology, forensic psychology and psychopathology. You will also be given the opportunity to undertake an internship in psychology as well as develop your counselling skills through a suite of elective units offered by the School of Psychology.

An honours year is available upon completion of this degree.

Professional recognition

Deakin's Bachelor of Applied Science (Psychology) is recognised for registration purposes by the Psychology Board of Australia (PBA), accredited by the Australian Psychology Accreditation Council (APAC) and enables you to undertake additional study in pursuit of professional registration.

Pathways to registration

Please refer to page 4 for information on pathways to full registration.

Career opportunities

As a graduate of this course you will have developed the knowledge and skills that make you highly employable across an array of stimulating employment settings.

Many psychologists work in schools and education settings, or in a variety of businesses, delivering employee assistance programs or training. Increasingly, opportunities are available in commerce and industry such as human resources, business and management.

Course structure

You must complete 24 credit points of study, including at least 12 psychology units.

Level 1

HBS107 Understanding Health
HBS108 Health Information and Data
HBS110 Health Behaviour
HPS111 Introduction to Psychology A
HPS121 Introduction to Psychology B
plus three elective units

Level 2

HPS201 Research Methods in Psychology A
HPS202 Child and Adolescent Development
HPS203 Cognitive Psychology A
HPS204 Introduction to Social Psychology
HPS205 Behavioural Neuroscience
plus three elective units

Level 3

HPS301 Research Methods in Psychology B
HPS307 Personality
HPS308 Psychopathology
plus five elective units

Elective units

Two of the 11 elective units must be chosen from the list below:
HPS302 Pathways Through Adulthood
HPS303 Cognitive Psychology B
HPS304 The Social Psychology of Relationships
HPS309 Psychological Testing and Measurement
HPS395 Clinical Neuroscience

The remaining nine elective units may include other psychology units such as:
HPS206 Psychology in the Criminal Justice System
HPY201 Psychology Internship
HPY210 Coaching and Counselling Individuals for Behaviour Change
HPY310 Coaching and Counselling Groups for Behaviour Change

NEW = planned to commence in 2013.

* Subject to University approval.

DID YOU KNOW?

Deakin's teaching and research staff are experts in their respective fields, with broad international links and connections with industry.

KEY

- 3** Course duration in years
- B** Melbourne Burwood Campus
- F** Geelong Waterfront Campus
- G** Geelong Waurn Ponds Campus
- W** Warrnambool Campus
- X** Off campus



ACADEMIC PROFILE



Associate Professor Alexander Mussap
Deputy Head of School (Director of Teaching
and Learning), School of Psychology
Melbourne Burwood Campus

Assoc. Prof. Mussap coordinates the Bachelor of Applied Science (Psychology) at undergraduate level, and the honours in psychology courses at fourth-year level. He also supervises numerous honours and postgraduate students (PhD and Doctor of Psychology). He conducts research primarily in the area of health psychology, on topics that include body image, culture, religion, and gender, and also works in the areas of visual and self perception.

Assoc. Prof. Mussap has been awarded four Australian Research Council Discovery Grants and in 2009, was part of a team that won an Australian Learning and Teaching Council Citation for Outstanding Contribution to Student Learning.

Assoc. Prof. Mussap says, 'Students of psychology are faced with the difficult task of integrating knowledge across diverse theoretical perspectives and research traditions. This can make it difficult to form a coherent understanding of what it means to be "evidence-based" in psychology. The primary motivation behind my efforts and innovations in teaching and learning is to develop in our students a professional identity, one that integrates knowledge and practice in psychology.'

Courses

Bachelor of Psychology 4 B G W

Deakin code	VTAC code	Indicative first year fee	ATAR
H345	B 14691 (CSP) G 15151 (CSP) W 18161 (CSP)	\$6590 (CSP) ¹	B 80.30 G 74.20 W 63.80
Year 12 prerequisites	VCE units 3 and 4 – a study score of at least 30 in English (ESL) or 25 in any other English.		
Non-Year 12 requirements	VTAC Pi form. Some applicants only: STAT Multiple Choice.		

Psychology is concerned with understanding human personality, behaviour, emotion, underlying mental processes and the factors which lead people to differ in the way they think and behave. Throughout this course you will be exposed to an integrated approach to psychology which covers areas including behavioural and clinical neuroscience, child and adolescent psychology, relationships and the psychology of groups, personality, cognitive psychology, forensic psychology and psychopathology. You will also be given the opportunity to undertake an internship in psychology as well as develop your counselling skills through a suite of elective units offered by the School of Psychology.

Unlike the Bachelor of Applied Science (Psychology), this four-year course provides selected students with the opportunity to complete honours in psychology as part of the final year of this degree. Selection into honours is subject to academic achievement in the first three years of study.

Professional recognition

Deakin's psychology sequence is recognised for registration purposes by the Psychology Board of Australia (PBA) and is accredited by the Australian Psychology Accreditation Council (APAC).

Pathways to registration

Please refer to page 4 for information on pathways to full registration.

Career opportunities

After successfully completing the Bachelor of Psychology you will be well prepared for employment in a wide range of areas relevant to human wellbeing, such as social work, youth work, careers counselling, work/life counselling, developmental psychology, research psychology, or mental health rehabilitation.

Depending on your chosen area and level of further study, you will be able to work in a variety of settings, including specialist areas of psychology practice, such as clinical, forensic, organisational, educational, health, sport and many others. The contexts in which you work may include hospitals, business organisations, schools, universities, government agencies, community sporting groups, various research groups or in private practice.

Course structure

You must complete 32 credit points of study, including a minimum of 20 credit points of psychology units.

Level 1

HBS107 Understanding Health
HBS108 Health Information and Data
HBS110 Health Behaviour
HPS111 Introduction to Psychology A
HPS121 Introduction to Psychology B
plus three elective units

Level 2

HPS201 Research Methods in Psychology A
HPS202 Child and Adolescent Development
HPS203 Cognitive Psychology A
HPS204 Introduction to Social Psychology
HPS205 Behavioural Neuroscience
plus three elective units

Level 3

HPS301 Research Methods in Psychology B
HPS307 Personality
HPS308 Psychopathology
plus five elective units

Elective units

Two of the 11 elective units must be chosen from the list below:

HPS302 Pathways Through Adulthood
HPS303 Cognitive Psychology B
HPS304 The Social Psychology of Relationships
HPS309 Psychological Testing and Measurement
HPS395 Clinical Neuroscience

The remaining nine elective units may be chosen from the psychology units listed below, or undertaken from any area of the University (subject to availability and timetabling):

HPS206 Psychology in the Criminal Justice System
HPY201 Psychology Internship
HPY210 Coaching and Counselling Individuals for Behaviour Change
HPY310 Coaching and Counselling Groups for Behaviour Change

Honours units

Level 4

HPS425 Honours in Psychology Part A (2 credit points)
HPS426 Honours in Psychology Part B (2 credit points)
HPS427 Honours in Psychology Part C (2 credit points)
HPS428 Honours in Psychology Part D (2 credit points)

KEY

- 3** Course duration in years
- B** Melbourne Burwood Campus
- F** Geelong Waterfront Campus
- G** Geelong Waurn Ponds Campus
- W** Warrnambool Campus
- X** Off campus

GRADUATE SNAPSHOT



Laura Baudinette
Bachelor of Psychology (Honours), 2010
Warrnambool Campus
Currently: Leading Community Corrections
Officer, Department of Justice

'The diversity of Deakin's psychology subject areas is fantastic – I could take electives in social, developmental, cognitive, forensic, health and neuropsychology, in addition to developing my skills in psychological research.

My honours year was fantastic. The opportunity to complete an independent research project and thesis was a highlight for me. With encouragement from my supervisor I chose to focus my research on the cognitive impact of Fibromyalgia syndrome on sufferers.

After completing my honours year, I secured my current position as a Leading Community Corrections Officer at Corrections Victoria. The knowledge and experience acquired through my studies have equipped me with invaluable professional skills which are directly relevant to my work.'

Courses

Bachelor of Health Sciences – major sequence in psychology **3 B G W**

Deakin code	VTAC code	Indicative first year fee	ATAR
H300	B 14301 (CSP) G 15261 (CSP) W 18211 (CSP)	\$6510 (CSP) ¹	B 71.15 G 55.90 W 50.30
Year 12 prerequisites	VCE units 3 and 4 – a study score of at least 30 in English (ESL) or 25 in any other English.		
Non-Year 12 requirements	VTAC Pi form. Some applicants only: STAT Multiple Choice.		

This flexible degree is ideal if you are interested in a career in health but aren't sure which direction to take. While concentrating your studies on two specialised health-related areas you can explore complementary study areas that appeal to your interests and career aspirations, and diversify your employment opportunities by undertaking elective units from any area of the University (subject to availability and timetabling).

Depending on the major sequences and electives you choose, you may have the opportunity to undertake an industry placement unit to consolidate your knowledge and enhance your employment prospects.

An honours year is available upon completion of this degree.

Professional recognition

Deakin's Bachelor of Health Sciences with a 10-credit-point major sequence in psychology is recognised for registration purposes by the Psychology Board of Australia (PBA).

Pathways to registration

Please refer to page 4 for information on pathways to full registration.

Career opportunities

Career opportunities for Bachelor of Health Science graduates are diverse and depend on the major sequences and electives chosen. Depending on the study areas you choose, you may qualify to work in areas such as health promotion, health education, community health, project management, program planning, case management, counselling, family and community support, housing services, regional health service planning, sports psychology, sports nutrition and sports development.

Work-Integrated Learning

You can enhance your employment prospects and consolidate your knowledge and skills through an industry placement unit. Depending on the major sequences you choose to study, this option may be available as an elective unit in the final year of this course.

Course structure

You must complete 24 credit points of study, including at least 16 credit points from the Faculty of Health. Within these 16 credit points you must complete two core units, which provide you with the opportunity to engage in multidisciplinary learning, and two major sequences chosen from the list below.

Core units

HBS107 Understanding Health
HBS108 Health Information and Data

Major sequences

- » Exercise science **B X**
- » Family, society and health **B**
- » Food studies **B**
- » Health promotion **B G W X**
- » Nutrition **B G W**
- » People, society and disability **B X**
- » Physical activity and health **B G W**
- » Psychology **B G W X**
- » Sport coaching **B**

For more information about these major sequences, please refer to the *2013 Undergraduate Health Career Booklet*.

Psychology major sequence **B G W X**

This major sequence develops your understanding of a range of topics in psychology, which is the science concerned with unravelling questions about human behaviour and mental processes.

6-credit-point major sequence

This six unit major sequence is designed to complement other studies within the Bachelor of Health Sciences. It does not meet the requirements for entry into fourth-year studies in psychology, nor does it lead to a professional qualification in psychology.

Level 1

HPS111 Introduction to Psychology A
HPS121 Introduction to Psychology B

Level 2

Select two elective units from the following:
HPS201 Research Methods in Psychology A
HPS202 Child and Adolescent Development
HPS203 Cognitive Psychology A
HPS204 Introduction to Social Psychology
HPS205 Behavioural Neuroscience

Level 3

Select two elective units from the following:
HPS301 Research Methods in Psychology B
HPS307 Personality
HPS308 Psychopathology

10-credit-point major sequence

Students who wish to pursue registration as a psychologist, can meet their undergraduate study requirements by taking this ten unit major sequence. Following successful completion of this major sequence, students may be eligible to apply for a fourth-year of study in psychology (either honours in psychology or a Graduate Diploma of Psychology).

Level 1

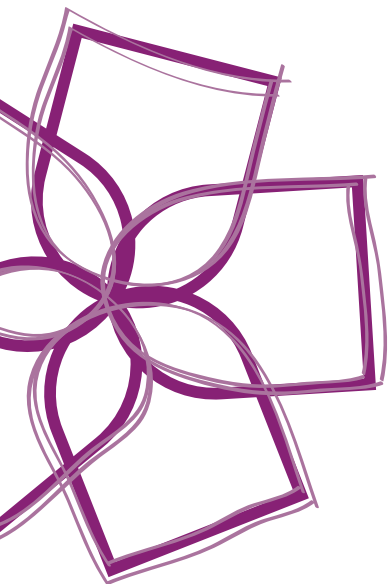
HPS111 Introduction to Psychology A
HPS121 Introduction to Psychology B

Level 2

HPS201 Research Methods in Psychology A
HPS202 Child and Adolescent Development
HPS203 Cognitive Psychology A
HPS204 Introduction to Social Psychology
HPS205 Behavioural Neuroscience

Level 3

HPS301 Research Methods in Psychology B
HPS307 Personality
HPS308 Psychopathology



KEY

- 3** Course duration in years
- B** Melbourne Burwood Campus
- F** Geelong Waterfront Campus
- G** Geelong Waurn Ponds Campus
- W** Warrnambool Campus
- X** Off campus

Combined courses

Bachelor of Nursing/ Bachelor of Applied Science (Psychology) **4 B F W**

Deakin code	VTAC code	Indicative first year fee	ATAR
D387	B 14081 (CSP) F 15101 (CSP) W 18031 (CSP)	\$5630 (CSP) ¹	B 80.70 F 71.75 W 54.85
Year 12 prerequisites	VCE units 3 and 4 – a study score of at least 30 in English (ESL) or 25 in any other English.		
Non-Year 12 requirements	VTAC Pi form. Some applicants only: STAT Multiple Choice.		

This course is particularly well suited to those interested in the growing field of mental health nursing. It will prepare you with a strong understanding of research methods in psychology, human behaviour and mental processes and provide you with the knowledge and skills to comprehensively care for patients.

Throughout the course you will benefit from our purpose-built clinical skills laboratories which provide you with the facilities and equipment required to develop practical skills which are further enhanced through clinical work placements.

In addition you will study a wide range of subjects that provide the scientific knowledge base for mental health practice such as psychology as a behavioural science, statistics, psychological testing and measurement, mental health promotion and research.

An honours year is available upon the completion of this degree.

Professional recognition

This course is specifically designed to fulfil the registration requirements for Registered Nurse (Division 1) of the Nursing and Midwifery Board of Australia (NMBA), and provides you with a three-year sequence in psychology that is recognised by the Psychology Board of Australia (PBA).

Career opportunities

Upon completion of your studies you will be qualified to work in areas such as mental health rehabilitation, youth work, careers counselling, community development and work/life counselling in addition to more traditional nursing roles.

Pathways to psychology registration

Please refer to page 4 for information on pathways to full registration.

DID YOU KNOW?

Experience has shown that employers prefer graduates who have studied combined courses. These graduates are highly regarded for their breadth of knowledge and unique perspective of the business environment.

Work-Integrated Learning

As part of the Bachelor of Nursing component of this course, work placements are conducted throughout your course beginning in Trimester 1 of your first year. This early exposure to the clinical environment gives you extensive opportunities to develop clinical skills under the supervision of registered nurses and enables you to experience being part of a multidisciplinary health care team. You will gain clinical experience in a variety of settings including acute/sub-acute care, medical and surgical care, aged care, rehabilitation, paediatrics, community nursing and mental health nursing. You will spend approximately 21 weeks in various health care settings, including hospitals and community health centres in metropolitan, rural and regional areas.

Work placement requirements

In accordance with Department of Human Services policy*, nursing students are required to undertake a National Police Record Check prior to work placements in each calendar year of your course. In accordance with the Working with Children Act 2005**, all students are required to undertake a Working with Children Check at commencement of the course. If you fail to obtain a National Police Record Check and a Working with Children Check prior to the commencement of the work placement you will not be able to undertake the work placement. You may also be required to declare your immunisation status to satisfy the requirements of health organisations where you will be undertaking your work placement. All expenses associated with the work placement are your responsibility.

* Department of Human Services Policy on Working with Children Check and Police Record Checks can be found at: www.dhs.vic.gov.au/facs/bdb/fmu/service-agreement/5.departmental-policies-and-procedures/5.6-police-records-check-policy.

** Department of Justice 2007, Working with Children Act 2005, Victoria, Australia retrieved 16 June 2008.

Course structure

You must complete 32 credit points of study, including 22 credit points of nursing units and 10 credit points of psychology units.

Level 1

HBS109 Human Structure and Function
HNN112 Principles of Nursing Care
HNN114 Health Assessment
HNN120 The Discipline of Nursing: Contemporary Issues and Trends 1
HNN122 Nursing Management and Interventions 1
HPS111 Introduction to Psychology A
HPS121 Introduction to Psychology B

Level 2

HBS107 Understanding Health
HBS108 Health Information and Data
HBS110 Health Behaviour
HNN215 Quality Use of Medicines in Nursing
HNN222 Mental Health Nursing
HNN227 Nursing Management and Interventions 2

Level 3

HNN217 Nursing in Community Settings
HNN300 Child and Adolescent Nursing
HNN318 Nursing Management of the Older Person
HPS201 Research Methods in Psychology A
HPS202 Child and Adolescent Development
HPS203 Cognitive Psychology A
HPS204 Introduction to Social Psychology
HPS205 Behavioural Neuroscience

Level 4

HNN301 Mental Health Promotion
HNN319 Nursing Management of Chronic Illness
HNN320 The Discipline of Nursing: Contemporary Issues and Trends 2
HNN325 Comprehensive Nursing Management and Interventions
HPS301 Research Methods in Psychology B
HPS307 Personality
HPS308 Psychopathology

For the latest information about new courses at Deakin University, please visit deakin.edu.au.

Courses

Bachelor of Health Sciences/Bachelor of Arts 4 B

Deakin code	VTAC code	Indicative first year fee	ATAR
D391	14071 (CSP)	\$6250 (CSP) ¹	73.85
Year 12 prerequisites	VCE units 3 and 4 – a study score of at least 30 in English (ESL) or 25 in any other English.		
Non-Year 12 requirements	VTAC Pi form. Some applicants only: STAT Multiple Choice.		

The Bachelor of Health Sciences/Bachelor of Arts is a flexible degree that is ideal if you are interested in a career in either health or arts but aren't sure which direction to take. The course allows you to undertake complementary studies in both these areas while exploring particular areas of interest to you. You choose how to structure your course and could combine, for example: exercise science with psychology, politics and policy studies with nutrition, sport coaching with media and communication, food studies with journalism, or sociology with health promotion.

For more information, including major sequences, career opportunities and course structure, please refer to page 10 for the Bachelor of Health Sciences – major sequence in psychology or visit deakin.edu.au/future-students.

You will also find more information about this course in the *2013 Undergraduate Health Career Booklet* and the *2013 Undergraduate Arts, Humanities and Social Sciences Career Booklet*.

¹ The indicative first year fee is an approximate indication of the cost of this course in the first year of full-time study for a Commonwealth Supported Place. We can't specify the exact figure, because fees are charged per unit, not per course, so the actual fees may vary depending on what units you choose to study.

The fees quoted in this booklet are for Australian students in 2012, and may change for 2013 and later years. You can find more information about fees on our website at deakin.edu.au. For information on fees for international students, please visit deakin.edu.au/international.

Peer Mentoring Program

The Faculty of Health runs a Peer Mentoring Program as part of its commitment to providing new students with the best possible transition into university life. By joining the Peer Mentoring Program, first-year students will receive support and guidance from more senior students in their course. The program runs across all campuses and is open to students from all courses offered by the Faculty of Health.

For more information please visit deakin.edu.au/health/peer-mentoring.



ACADEMIC PROFILE

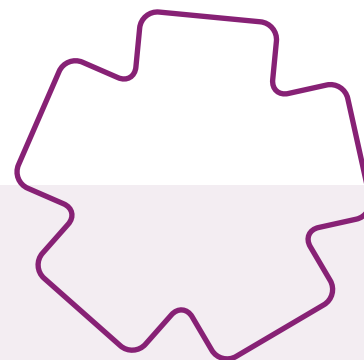


Ben Richardson
Lecturer, School of Psychology
Melbourne Burwood Campus

'Studies in psychology provide knowledge of key factors underlying human behaviour. This understanding has many applications across a wide range of contexts such as clinical (e.g. treating mental illness), organisational (e.g. personnel selection, management), policy and research. Students are supported to learn important skills including critical thinking and communication skills, preparing them for a successful career.'

KEY

- 3** Course duration in years
- B** Melbourne Burwood Campus
- F** Geelong Waterfront Campus
- G** Geelong Waurn Ponds Campus
- W** Warrnambool Campus
- X** Off campus



How to apply

Applying to study at Deakin University is easy. Whether you are a current Year 12 student, TAFE graduate, mature-age student, non-school leaver, or international student studying VCE in Australia, you can apply to study a Deakin undergraduate course through the **Victorian Tertiary Admissions Centre (VTAC)** (unless stated otherwise in the admission guidelines).

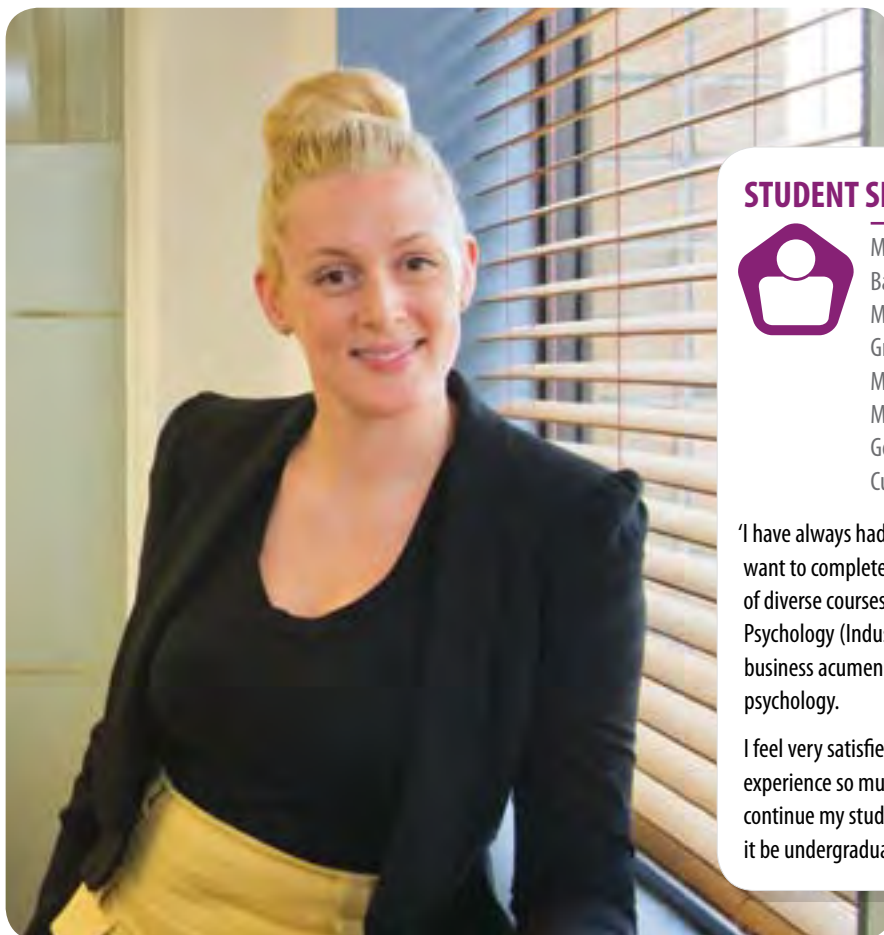
When you are applying for a course, make sure you check all of the entry requirements carefully. Most courses have prerequisites and some have additional requirements that you will need to complete to be eligible for selection into that course.

For prerequisite and extra requirement information, please visit the VTAC website www.vtac.edu.au.

For more information on how to apply, including special consideration and deferment, check out our *Undergraduate eBrochure* at deakin.edu.au/ebrochure/undergrad or visit deakin.edu.au/future-students/applications-enrolments.

DID YOU KNOW?

You can defer your studies in most Deakin courses for up to two years. This means you can postpone your studies to work, travel or volunteer and still retain your university place.



STUDENT SNAPSHOT



Marcele De Sanctis
 Bachelor of Applied Science (Psychology),
 Melbourne Burwood Campus
 Graduate Diploma of Psychology,
 Melbourne Burwood Campus
 Master of Psychology (Industrial and Organisational),
 Geelong Waterfront Campus
 Currently: studying Doctor of Philosophy

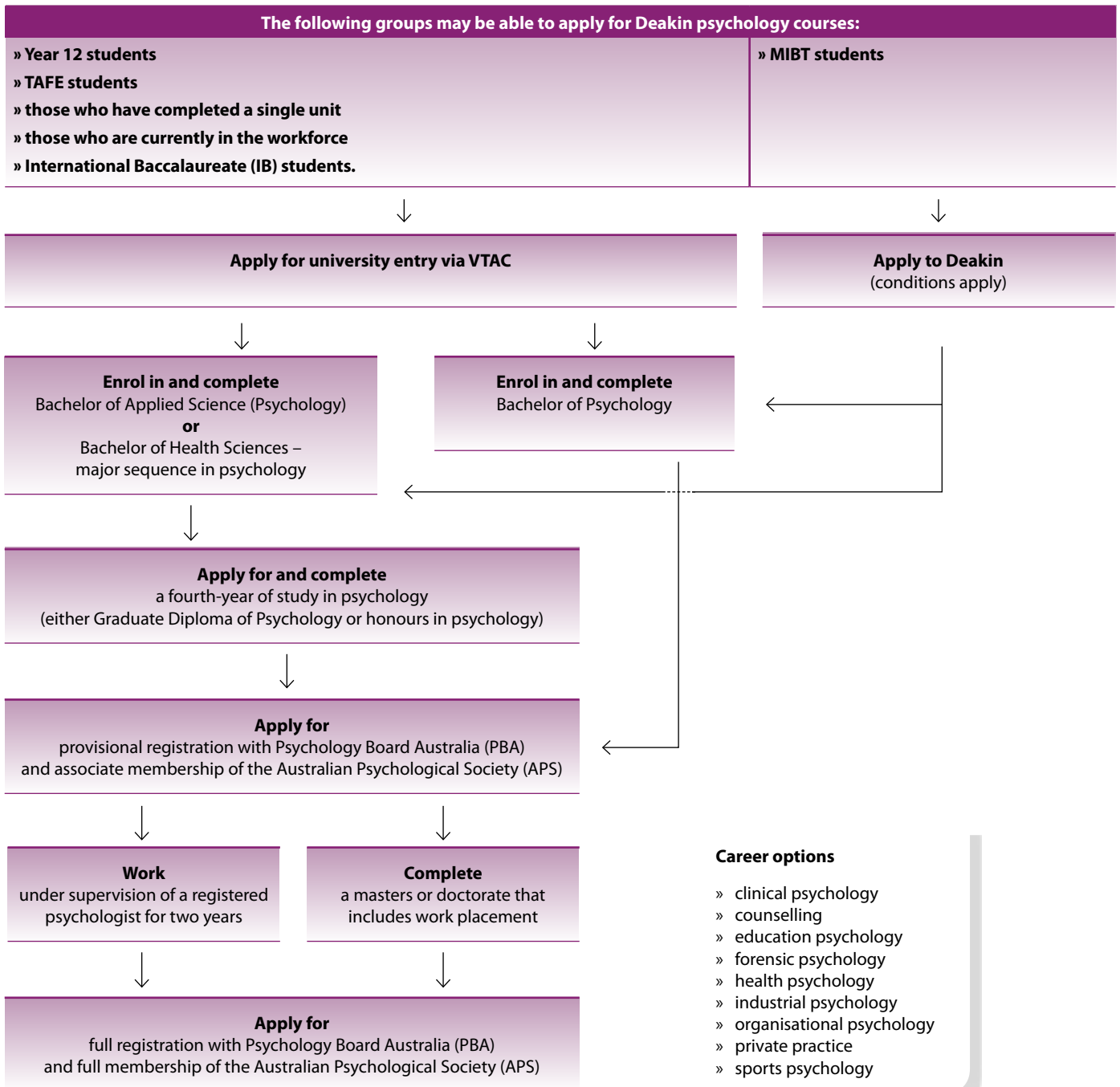
'I have always had an interest in the business side of psychology but did not want to complete an accounting or commerce degree. Deakin offers a range of diverse courses within the School of Psychology, such as the Master of Psychology (Industrial and Organisational), which allowed me to hone my business acumen and explore this area whilst maintaining my interest in psychology.

I feel very satisfied and proud to be a Deakin student and enjoyed my experience so much that I decided Deakin would be the ideal institution to continue my studies. I would recommend studying here at any level whether it be undergraduate or postgraduate.'

Entry options

Gaining entry into Deakin is not just for people who have recently completed Year 12. TAFE students, people who have completed a single unit(s) of study, those who are currently in the workforce and International Baccalaureate (IB) students can also apply to study at Deakin, providing they have met certain criteria. These alternative entry options are referred to as pathway programs and take into consideration previous qualifications or your time in the workforce.

The flowchart below outlines the various groups that can apply for Deakin psychology courses and examples of the options that are available to you on your journey as a student, depending on your chosen course. Some of these groups and options are explained further on page 15.



Please note applicants are subject to entry requirements.

For more examples of pathways into Deakin University, please visit deakin.edu.au/pathways.



TAFE pathways

If you complete a diploma or advanced diploma at TAFE in a field similar to the Deakin course of your choice, you can then apply for the Deakin course and you may receive credit for your TAFE qualification. In most cases, this will reduce the number of units you need to complete to obtain your Deakin qualification.

Deakin has formal pathway programs and special credit arrangements with its partner TAFEs (Box Hill Institute in Melbourne, South West TAFE in Warrnambool and The Gordon in Geelong) however all TAFE qualifications are considered for application to Deakin.

If you have completed a diploma or advanced diploma, you may be eligible for up to 12 credit points towards a related Deakin degree. The assessment of credit is based on a number of factors and is determined on an individual basis. To find out what credit you may be entitled to, please visit deakin.edu.au/courses/credit.

Melbourne Institute of Business and Technology (MIBT)

Deakin University and the Melbourne Institute of Business and Technology (MIBT) have been in partnership for more than 14 years. MIBT can provide an excellent pathway to Deakin for students who do not meet the admission requirements for Deakin University courses. MIBT is located at Deakin's Melbourne Burwood Campus and Geelong Waurm Ponds Campus, allowing you the opportunity to gain access to Deakin's facilities and services and get involved in uni life.

MIBT may provide a direct pathway to second-year psychology studies at Deakin (conditions apply).

MIBT diplomas are equivalent to the first year of a Deakin University undergraduate degree. On successful completion of a diploma and meeting University academic entrance criteria, you may be eligible for entry to second year of a Deakin University undergraduate psychology degree.

Single unit study (non-award)

You may wish to undertake a single unit of study at Deakin (without being enrolled or accepted into a course). These units are subject to fees and do not lead to a degree, but may be credited towards a degree if you succeed in gaining entry to a course at a later stage.

For more information, please visit deakin.edu.au/future-students/applications-enrolments/applications/single-subject.

Choice of campus

One of the great things about Deakin is that we have four campuses throughout Victoria. Many of our courses are offered at more than one campus and the ATAR required for each campus often differs, but the same high-quality degree is delivered no matter which campus you study at. This provides you with more entry options and enables you to transfer your studies from one campus to another.

Honours

Honours is a specialised year of study that allows you to draw together the theory and practical skills gained in previous undergraduate studies and develop an in-depth knowledge of your particular discipline through research and additional coursework and training in research techniques.

We offer the following honours in psychology programs:

- » Bachelor of Applied Science (Psychology) (Honours)
- » Bachelor of Arts (Psychology) (Honours)
- » Bachelor of Health Science (Psychology) (Honours).

These three courses are identical in content. The particular course of enrolment is determined by the bachelors degree completed.

For more information on honours degrees, please visit deakin.edu.au/honours.

The School of Psychology offers research in the following areas:

- » adolescent health
- » body image and disordered eating
- » clinical, health and forensic psychology
- » drugs and alcohol
- » eye-witness testimony
- » healthy ageing and depression among older people
- » human factors such as auditory and visual perception
- » human sexuality
- » organisational psychology in health care settings
- » quality of life
- » relationships
- » risk behaviours
- » social and mental health
- » treatment of offenders.

For a comprehensive list of supervisors and their research interests, please visit deakin.edu.au/health/research/supervision.

Postgraduate opportunities

Following completion of an approved four-year sequence of academic study in psychology, you may wish to undertake postgraduate studies in psychology in your pursuit of full registration. Deakin's School of Psychology offers two masters courses: Master of Psychology (Industrial and Organisational) and Master of Psychology (Clinical), and three doctorates: Doctor of Psychology (Clinical), Doctor of Psychology (Health) and Doctor of Psychology (Forensic). Alternatively, you may decide to undertake a research degree such as a research masters or Doctor of Philosophy (PhD).

Pathways to a career in medicine

Successful completion of the Bachelor of Applied Science (Psychology), Bachelor of Psychology or Bachelor of Health Sciences (including a major sequence in psychology) with electives in biomedical science, are some of the many pathways for graduates to apply for entry into Deakin's Bachelor of Medicine Bachelor of Surgery, offered at the Geelong Waurm Ponds Campus.

Pathways to full registration

Refer to page 4 to find out how you can gain full registration as a psychologist.

For more information on pathways into Deakin University, please visit deakin.edu.au/pathways.



STUDENT SNAPSHOT



Amanda Dando
Bachelor of Psychology (Honours), 2009
Geelong Wairn Ponds Campus
Currently: studying Master of Psychology (Clinical)
Geelong Waterfront Campus

'I chose Deakin because I immediately felt most comfortable there. Not only were all the staff approachable, but the other students and student support groups were so friendly.

I completed an honours year researching body image in young adult male and female gym users. It was the hardest year of my life but the result was rewarding and I have a thesis that is my own research and my own work – it's incredible.

After working in a position at Pathways Rehabilitation and Support Services (where I applied my learnt skills in a professional setting) I now work in the area of applied behaviour analysis therapy and as a research assistant while studying for a masters degree.'

Find out more

Contact us

P 1300 DEGREE (1300 334 733)
E enquire@deakin.edu.au

deakin.edu.au/psychology

For the latest information about new courses at Deakin University, please visit deakin.edu.au.

Further reading

- » 2013 Undergraduate Course Guide
- » 2013 undergraduate career booklets
- » Pathways to Deakin
- » Parents' Guide to University
- » Off-Campus Course Guide
- » Scholarships Guide
- » Accommodation Guide

To order copies of these brochures, phone 1300 DEGREE (1300 334 733) or view them online at deakin.edu.au/future-students/brochures.

Undergraduate eBrochure

Check out our *Undergraduate eBrochure*, available from deakin.edu.au/ebrochure/undergrad, the Apple App Store and Google play.



Discover Deakin online

You can follow Deakin University through Facebook, Twitter and YouTube.

Connect with other future students and ask current students and staff about life and study at Deakin.

facebook.com/discoverdeakin
twitter.com/discoverdeakin
youtube.com/discoverdeakin



Other useful websites

Future students
deakin.edu.au/future-students

Subject information
deakin.edu.au/handbook

Campuses
deakin.edu.au/campuses
deakin.edu.au/tour

Clubs and societies
dusa.org.au/pages/clubs

Scholarships
deakin.edu.au/scholarships

VTAC
www.vtac.edu.au

Australian Psychology Accreditation Council
www.apac.psychology.org.au

Psychology Board of Australia (PBA)
www.psychologyboard.gov.au

Australian Psychological Society
www.psychology.org.au

Important dates 2012

Deakin events

Sunday 12 August
Open Day
Warrnambool Campus

Sunday 19 August
Open Day
Geelong Waurn Ponds Campus
and Geelong Waterfront Campus

Sunday 26 August
Open Day
Melbourne Burwood Campus

Deakin will hold additional events for prospective students and parents. Please visit deakin.edu.au/future-students for updates.

Application dates

Early August*
VTAC applications open

Late September*
Timely VTAC applications close

Mid November*
Late VTAC applications close
(late fee applies)

Mid December*
Very late VTAC applications close
(very late fee applies)

December
Change of Preference

Please check the Deakin University Change of Preference website closer to the date for specific event details, deakin.edu.au/cop.

* Please check dates on the VTAC website www.vtac.edu.au and on the other websites provided.

Careers markets and expos

Melbourne

Thursday 3–Sunday 6 May
The Age VCE Careers Expo

Friday 25–Saturday 26 May
National Careers and Employment Expo

Saturday 16–Sunday 17 June
Reinvent Your Career Expo

Friday 27–Sunday 29 July
Herald Sun Careers Expo

Interstate

Sunday 29–Monday 30 April
Adelaide – Tertiary Studies and Careers Expo

Thursday 13–Sunday 16 May
Perth – Careers, Education and Employment Expo

Thursday 21–Sunday 24 June
Sydney – Western Sydney Careers Expo

Saturday 21–Sunday 22 July
Brisbane – The Tertiary Studies Expo (TSXPO)

Box Hill Institute CRICOS Provider Code: 02411J
Gordon Institute of TAFE CRICOS Provider Code: 00011G
Melbourne Institute of Business and Technology (MIBT)
CRICOS Provider Code: 01590J
South West Institute of TAFE CRICOS Provider Code: 01575G

More information | Psychology

1300 DEGREE (1300 334 733) | enquire@deakin.edu.au | deakin.edu.au/health
Health – Student and Academic Services | 03 9251 7777 | health-enquire@deakin.edu.au

2012 DEAKIN UNIVERSITY OPEN DAYS

**WARRNAMBOOL
CAMPUS**

Princes Highway
Warrnambool Victoria

**12
AUG**

**GEELONG
WAURN PONDS CAMPUS**

Pigdons Road
Waurn Ponds Victoria

**19
AUG**

**GEELONG
WATERFRONT CAMPUS**

1 Gheringhap Street
Geelong Victoria

**19
AUG**

**MELBOURNE
BURWOOD CAMPUS**

221 Burwood Highway
Burwood Victoria

**26
AUG**