

2010-2013

DEAKIN QPS

QUALITY AND PATIENT SAFETY RESEARCH
(QPS) STRATEGIC RESEARCH CENTRE

QUADRENNIAL REPORT

CRICOS Provider Code: 00113B



DEAKIN
UNIVERSITY AUSTRALIA

DEAKIN-QPS QUADRENNIAL REPORT 2010-2013

**CENTRE FOR QUALITY AND PATIENT
SAFETY RESEARCH**

For further information about this report please contact:

Centre for Quality and Patient Safety Research
Deakin University
221 Burwood Highway
BURWOOD VIC 3125

qps@deakin.edu.au

© Deakin University 2013
Published December 2013

CONTENTS

From the Director	1
Centre for Quality and Patient Safety Research	2
Our vision	3
Clinical partnerships	5
Members	6
Governance	16
Strategic planning days and goal development	17
Activities	18
Flagship projects	22
Quality and Patient Safety	22
Complex and Continuing Aged Care	24
Internationalisation and Global Engagement	26
Awards, prizes and distinctions	28
QPS seeding grants 2010–2013	30
Deakin-led external funding 2010–2013	32

FROM THE DIRECTOR



The Centre for Quality and Patient Safety Research (Deakin-QPS) was established in late 2009 following a call by Deakin University for existing research clusters and other researcher groups to apply to become strategic research centres (SRC) of the University. Following this call, Deakin initially established 11 SRCs, which are now being promoted as Deakin's research strengths. The SRCs are approved on a triennial basis (initially 2010-2012 inclusive) with annual baseline and performance-based support from the central research budget. Each SRC is led by a Director who is responsible for driving the research agenda, planning for growth, mentoring researchers, benchmarking performance and ensuring quality outputs. The Director is also responsible for working collaboratively with colleagues in the Faculties and Schools to stimulate research activity across the University.

The research environment created by these SRC groupings is intended to stimulate research and research training, make more efficient use of and increase infrastructure, and assist Deakin to build a stronger research profile in the short to mid-term. Membership of an SRC is important to the development of a strategic research focus, with eligibility assessed on a case-by-case basis and based upon the research alignment and research intensity of the researcher.

Prior to becoming an SRC, QPS was formerly a research cluster within the School of Nursing and Midwifery, where it was branded as the 'Quality and Risk Management in Clinical and Aged Care Research Cluster' (QRM). Upon becoming an SRC,

QRM was renamed the 'Clinical Care, Quality and Risk Management (CCQRM) Group'. Later, following strategic planning and a refocusing of its strategic priority goals, CCQRM was rebadged as the 'Centre for Quality and Patient Safety Research' (Deakin-QPS). This change was in line with a growing trend nationally to situate patient safety and quality care as a health services research priority area.

QPS aims to inform the delivery of safe, high-quality care in hospital, aged care and community care settings. Cognisant of the renewed global emphasis on translational research in health care domains, QPS's vision is to be a world leader in health service research, particularly translational research, focusing on clinical care, quality and risk management.

The Deakin University Research Plan 2013-2015 emphasises the importance of making a difference through world class innovation and research. The DU Plan highlights the importance of ensuring the implementation of research agendas that are consistent with a commitment to the following overarching principles:

- **Excellence** of our research efforts
- **Relevance** of our research to our communities
- **Alignment** of our research with our Teaching and Learning approaches, and
- **Communication** of our research results and innovations.

As the activities summarised in this report demonstrate, since commencing its operations as an SRC in 2010, QPS is implementing a research agenda consistent with these principles. It is therefore with great pleasure that I write this introduction to our inaugural 2010-2013 Quadrennial report. I would also encourage readers to peruse the QPS website and the individual DRO and Research Gate links of our members, which contain more detailed information on our research and publication interests and achievements. I hope that you will find this report informative and that it will enable you to gain an appreciation of the substantive work that members and affiliates of QPS are engaged in.

Professor Megan-Jane Johnstone
Director
Centre for Quality and Patient Safety Research

CENTRE FOR QUALITY AND PATIENT SAFETY RESEARCH

The Deakin – Centre for Quality and Patient Safety Research (Deakin-QPS) is led by Deakin’s School of Nursing and Midwifery with which it shares the vision to be a world leader in advancing collaborative, multi-disciplinary research, particularly translational research, to the benefit of our stakeholder communities.

Commensurate with this vision is a shared commitment to developing a strong interface between research, education and practice, and progressing innovations in research and teaching for improving patient safety and health care outcomes.

The QPS key objectives for 2013-2015 are to:

1. Undertake high quality, innovative research that advances, in all healthcare environments, patient-focused care, evidence-based care and organisational safety;
2. Produce world-leading research in terms of originality, significance, rigour, and capacity to make an outstanding contribution to knowledge, theory, practice and/or policy;
3. Generate and integrate knowledge in the areas of clinical care, quality and risk management to enhance the independence and functional wellbeing of individuals in hospital and community care settings;
4. Increase the volume of applied research conducted in hospitals and other real-world settings with an emphasis on enhancing the ‘bench-to-bed’ principle;
5. Build QPS and affiliates research infrastructure through the development of local, national and international collaborations;
6. Build sustainable in-house research capacity by increasing the pool of ECRs/postdoctoral researchers and MCRs, and up-skilling and supporting new and established health professionals to identify research niches and conduct research;
7. Work with key organisations to inform and develop ethical thinking, decision making, practices and policy development in health services and community care.
8. In keeping with the above, a key and defining goal of QPS during 2013-2015 is to achieve designation as a World Health Organisation Collaborating Centre (WHOCC) for Research and Training in Patient Safety and Quality Care.

QPS researchers have strong alliances with other Schools and Faculties within and outside of Deakin University; enjoy productive national and international collaborations with researchers from the disciplines of medicine, psychology, health economics, and biostatistics; and are uniquely able to share research findings generated from their comprehensive clinical partnership network, which spans public and private healthcare sectors in urban, regional and rural areas.

Through its research activities QPS aims to also contribute to achieving the new national strategic research priorities, particularly in regard to *Priority 2: Promoting population health and wellbeing, Outcome 1: ‘Optimise effective delivery of health care and related systems and services’*. To this end, the Centre for Quality and Patient Safety Research conducts research across the following four strategic research priority areas: Clinical Risk and Symptom Management, Workforce Development and Health Care Service Delivery Models, Consumer Involvement in Health and Social Care Decision-Making, and Health Care Ethics and Policy Development.



QPS Strategic Planning Day 16 August, 2013 – includes QPS members and guest invitees from School of Nursing and Midwifery, Deakin University. **Back row left to right:** A/Prof Natisha Sands, Ms Lauren McTier (Guest), Dr Bernice Redley, Ms Emma Steel, Dr John Rolley, Prof Julie Considine, Dr Helen Rawson, Dr Nikki Phillips, A/Prof Trish Livingston. **Front row left to right:** Dr Maryann Street, Dr Emma Cohen (Guest), Ms Mary Gett, Prof Alison Hutchinson, Prof Megan-Jane Johnstone, Prof Maxine Duke, Prof Mari Botti, Prof Tracey Bucknall, Mr Danny Hills (Guest), Dr Cate Nagle.

OUR VISION

QPS's vision is to be a world leader in health service research, particularly translational research, focusing on clinical care, quality and risk management. Our broad objectives are to:

- Produce world-leading research
- Generate and integrate knowledge
- Increase the volume of applied research
- Build research infrastructure and strategic local/national/international collaborations
- Build sustainable research capacity
- Succession planning

Researchers lead a range of interrelated programs, which are organised into the following four strategic research priority areas: Clinical risk and symptom management; Workforce development and health care service delivery models; Consumer Involvement in health and social care decision-making; Health care ethics and policy development.

CLINICAL RISK AND SYMPTOM MANAGEMENT

Partnerships with industry form the basis for research in this area investigating the safety and quality of health care, processes for minimising clinical risks, and improving symptom and chronic disease management. Researchers collaborate with clinicians to translate research knowledge into practice, to develop and implement innovations designed to reduce adverse events and to improve the safety and quality of patient/client care.

WORKFORCE DEVELOPMENT AND HEALTH CARE SERVICE DELIVERY MODELS

Researchers in this area work in partnership with the health and community care sector to develop and implement projects to improve the quality, effectiveness and efficiency of service delivery. One of the key challenges facing the Australian health and community care systems is how to use limited resources effectively and efficiently to meet the growing demands for professional health care of an ageing and diverse population. Another key challenge is responding effectively to the increasing burden of chronic diseases. Researchers are developing and evaluating innovations to improve the productivity, responsiveness and capacity of the health care workforce to meet these challenges.

CONSUMER INVOLVEMENT IN HEALTH AND SOCIAL CARE DECISION-MAKING

Researchers in this area develop and implement projects that encourage the involvement of consumers in decisions that directly affect and shape their care. Evidence is mounting that consumer involvement in health and social care decision-making produces safer and more effective, flexible and responsive care outcomes. Researchers are developing projects and initiatives that further our

understanding of the issues that consumers face in accessing and dealing with the health and social care system, and also developing and trialling innovative solutions and policies to improve health and social care services.

HEALTH CARE ETHICS AND POLICY DEVELOPMENT

Researchers lead projects that examine the role and impact of ethics guidance and ethical frameworks in health policy proposals. The aim is to develop theory and produce evidence to inform the development, integration and implementation of ethics guidance pertinent to the ethical and effective delivery of health care. Projects also encompass the development of methodologies for the translation of evidence into the ethical integration and implementation of health-related policy. Researchers engage stakeholders, including policy makers, health service managers, clinicians, patients and caregivers to influence policy reform and innovation.

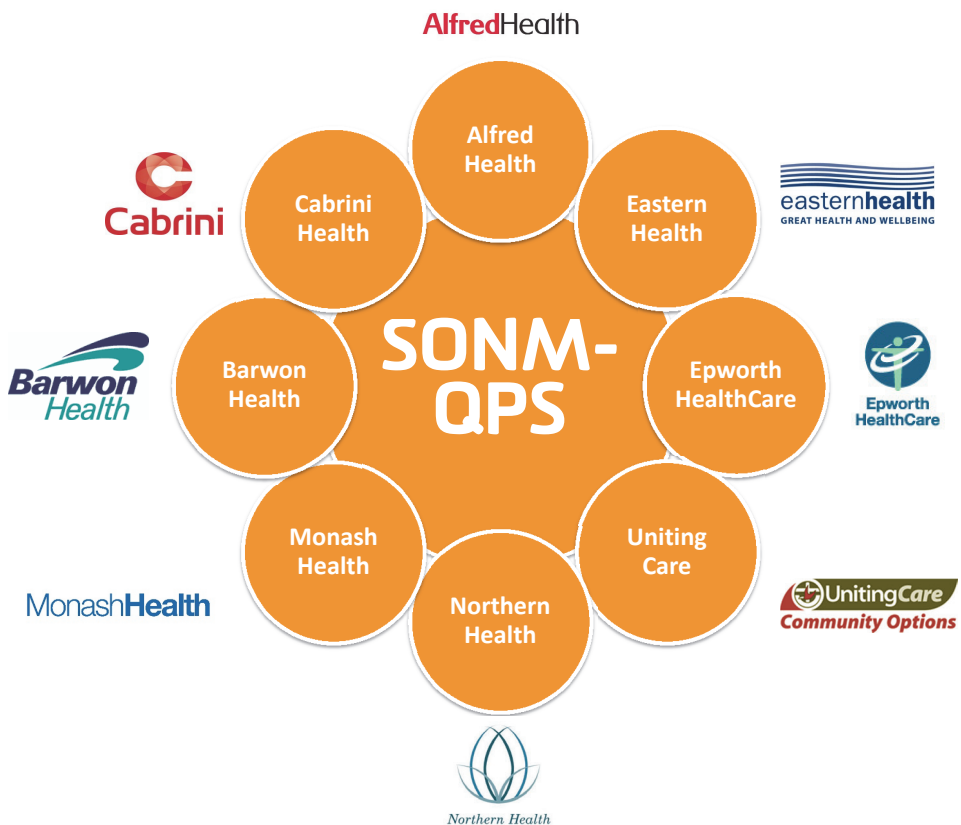
INFRASTRUCTURE

Within the Faculty of Health at Deakin University, QPS provides a productive, well-resourced environment to support high quality research in the above domains. This environment is equipped with up-to-date computers and analytic software (e.g. SPSS, Stata, NVivo, CReMS, Review Manager), and physical space to ensure a productive work setting. Located within the School of Nursing and Midwifery, QPS has a collegial setting, with resources that include: a full-time research assistant; finance and administration officer; and librarian in residence. QPS also provides access to internationally renowned biostatisticians. Access to these resources and to individuals with expertise in experimental design, qualitative and quantitative research design, and translational research, enables members and their collaborators to achieve their national and international objectives.

CLINICAL PARTNERSHIPS

Deakin – QPS research is strongly aligned with the School of Nursing and Midwifery’s Clinical Partnership Program, the first coordinated program of its kind in Australia. This extensive program connects Deakin University’s School of Nursing and Midwifery to eight health care organisations in the public and private sector and in metropolitan and non-metropolitan areas of Victoria.

The goal of this innovative program is to facilitate clinical multi-disciplinary research. The program enables research to be strategically focussed in areas of clinical importance to the health care field. These alliances facilitate major multi-site projects to be undertaken and provide a base for national and international collaboration.



Each partner health care organisation has a joint appointment with the School of Nursing and Midwifery in the form of either a Professor of Clinical Nursing or a Senior Research Fellow. This model facilitates research and relates the School’s education offerings to specific health care needs of the community.

MEMBERS

QPS OFFICE



Professor Megan-Jane Johnstone

Professor Megan-Jane Johnstone is Director of the Deakin – Centre for Quality and Patient Safety Research. One of Australia’s foremost nursing scholars, Megan-Jane is renowned internationally for her scholarly research in the areas of nursing and health care ethics, with a particular focus on patients’ rights, cross-cultural ethics, patient safety ethics, ethics and policy development, professional conduct, and end-of-life ethics including end-of-life decision-making in an aging society.

ResearchGate: www.researchgate.net/profile/Megan-Jane_Johnstone

DRO: www.deakin.edu.au/research/admin/pubs/reports/database/dynamic/output/person/person.php?person_code=johnsmea



Professor Alison Hutchinson

Professor Alison Hutchinson is Deputy Director of the Centre for Quality and Patient Safety Research and Chair in Nursing at Monash Health where she leads the Centre for Nursing Research – Deakin University and Monash Health Partnership. Her primary research interest centres on improving practice through knowledge translation (translation of evidence into practice), with particular interest in the influences of interprofessional interaction and organizational context on knowledge translation. Alison also has a research interest in the area of nursing ethics in relation to knowledge translation and end-of-life care.

ResearchGate: www.researchgate.net/profile/Alison_Hutchinson/?ev=hdr_xprf

DRO: www.deakin.edu.au/research/admin/pubs/reports/database/dynamic/output/person/person.php?person_code=hutchal



Ms Mary Gett

Ms Mary Gett is the Finance and Administration Officer (Research) at the Centre for Quality and Patient Safety Research. Mary joined the Centre for Quality and Patient Safety Research in April 2013, bringing with her 13 years’ experience working across multiple faculties. Mary has a Master in Business Systems and a Bachelor of Commerce.



Ms Emma Steel

Ms Emma Steel is the Research Assistant at the Centre for Quality and Patient Safety Research. Since completing a Masters of Genetic Counselling in 2010, Emma has been developing her research skills by working on a variety of qualitative research projects, including work in the fields of dysmorphology, familial cancer and gender inequality. In her current role, Emma assists the QPS members with a range of research related tasks, including systematic literature reviewing, grant and ethics applications and data analysis.

ResearchGate: www.researchgate.net/profile/Emma_Steel/?ev=hdr_xprf

SCHOOL OF NURSING AND MIDWIFERY



Professor Maxine Duke

Professor Maxine Duke is Deputy Dean of the Faculty of Health at Deakin University, Head of School of Nursing and Midwifery, and Chair in Nursing Development. She has overseen important research partnership agreements with eight of the largest health care organisations in Victoria; forming a research collaboration network that supports clinically relevant research and facilitates translation of research findings into practice and ensures curricula are based on best available evidence. Professor Duke has led numerous initiatives in the national and international arena with specific expertise in the area of Hospital in the Home and qualitative research methods.

ResearchGate: www.researchgate.net/profile/Maxine_Duke

DRO: www.deakin.edu.au/research/admin/pubs/reports/database/dynamic/output/person/person.php?person_code=dukexma

CLINICAL CHAIRS AND RESEARCH TEAMS

ALFRED HEALTH

Deakin Alfred Health Nursing Research Centre



Professor Tracey Bucknall

Professor Tracey Bucknall, Foundational Chair of Clinical Nursing, Alfred Health, Director of the Deakin Alfred Health Nursing Research Centre & Associate Head of School (Research) School of Nursing and Midwifery, Deakin University. As a decision scientist Tracey has successfully attracted significant competitive funding, presented her research nationally and internationally, and published more than 100 publications in the top ranked critical care, pain, nursing and knowledge translation journals. Her research aims to increase patient safety, alleviate patient symptoms and enhance the patient experience by focusing on improving clinical decision making and the uptake of research evidence in practice.

ResearchGate: www.researchgate.net/profile/Tracey_Bucknall

DRO: www.deakin.edu.au/research/admin/pubs/reports/database/dynamic/output/person/person.php?person_code=buckntr

BARWON HEALTH

Centre of Nursing and Allied Health Research



Professor Trisha Dunning

Professor Trisha Dunning AM, is Chair in Nursing and Director of the Centre of Nursing and Allied Health Research, Deakin University and Barwon Health. Trisha has an international reputation in diabetes research and clinical practice. She has a particular interest in nursing management of older people with diabetes, quality use of medicines, diabetes and end of life care and complementary therapies. Trisha is a Vice President of the International Diabetes Federation and a Board Member of Diabetes Australia – Victoria.

ResearchGate: www.researchgate.net/profile/Trisha_Dunning

DRO: www.deakin.edu.au/research/admin/pubs/reports/database/dynamic/output/person/person.php?person_code=dunnitr



Dr John Rolley

Dr John Rolley is a Senior Lecturer of Nursing at Deakin. In addition to undergraduate and postgraduate learning and teaching, John has an active research profile focusing on interventional cardiovascular nursing and education. John's main clinical focus has been critical care with particular interest in cardiovascular health. However, experiences in community health and social welfare have broadened that focus to include chronic illness management. In 2009, John completed a PhD with Curtin University. His program of research has as its focus improving outcomes for people undergoing percutaneous coronary interventions. A significant outcome of this work has been the development of nursing clinical practice guidelines. John is currently extending his work to inform the development of cardiac catheterisation laboratory specific guidelines and competencies.

ResearchGate: www.researchgate.net/profile/John_Rolley2

DRO: www.deakin.edu.au/research/admin/pubs/reports/database/dynamic/output/person/person.php?person_code=rollejo

CABRINI HEALTH

Cabrini – Deakin Centre for Nursing Research



Professor Tracey Bucknall holds this position in an honorary capacity having recently accepted the position as the Clinical Chair at Alfred Health.

Professor Alison Hutchinson holds an Honorary Professorial Fellow appointment at Cabrini Institute having recently moved to the Chair in Nursing at Monash Health where she leads the Centre for Nursing Research – Deakin University and Monash Health Partnership.

EASTERN HEALTH

Eastern Health – Deakin University Nursing Research Centre



Professor Julie Considine

Professor Julie Considine is the Chair of Nursing at Eastern Health. Julie leads two programs of research. The first is focused on Clinical Risk Management with an emphasis on the relationships between educational preparation and decision context on clinical decisions and patient care. The second research program is focused on Workforce Development and Service Delivery Models, in particular, the clinical outcomes advanced nursing practice and nurse practitioner roles, transition to speciality practice, and evaluation of service delivery models.

ResearchGate: www.researchgate.net/profile/Julie_Considine2

DRO: www.deakin.edu.au/research/admin/pubs/reports/database/dynamic/output/search/search_author.php?q=julie+considine



Associate Professor Trish Livingston

Associate Professor Trish Livingston is Associate Dean (Research) in the Faculty of Health and also holds a joint appointment at Eastern Health. Her research focus is in the development and implementation of clinical and community based interventions, programs, policy initiatives and guidelines to improve health delivery and outcomes for people with cancer and their caregivers. Her studies have demonstrated gaps in service delivery and she and her teams have developed recommendations, changes in clinical practice, and policy initiatives to improve consumer access to health services.

ResearchGate: www.researchgate.net/profile/Patricia_Livingston2

DRO: www.deakin.edu.au/research/admin/pubs/reports/database/dynamic/output/person/person.php?person_code=livinpa



Dr Maryann Street

Dr Maryann Street is a Research Fellow in the Eastern Health – Deakin University Nursing and Midwifery Research Centre. Her research focus is clinical risk in transitions of care, improving health care quality and patient safety through evidence-based practice. Specific research studies include nursing perspectives of handover, improving patient outcomes associated with emergency care for older and vulnerable patients, risk management in patient care, nursing assessment for the safe and timely discharge of patients from post-anaesthetic care, evaluating patient participation in acute care settings, and the role of nurses in end-of-life advanced care planning.

ResearchGate: www.researchgate.net/profile/Maryann_Street

DRO: www.deakin.edu.au/research/admin/pubs/reports/database/dynamic/output/person/person.php?person_code=streema

EPWORTH HEALTH

Epworth – Deakin Centre for Clinical Nursing Research



Professor Mari Botti

Professor Mari Botti is the Epworth/Deakin Chair in Nursing, where she leads the Epworth – Deakin Centre for Clinical Nursing Research. She also holds the prestigious title of Alfred Deakin Professor at Deakin University. Her research focus is on clinical and health services evaluation. She has a particular interest in postoperative pain management and the investigation of models of care that encourage patient engagement in their care, safety, health and wellbeing. She consults widely in the establishment of research collaborations and chairs the Deakin University Human Research and Ethics Committee.

DRO: www.deakin.edu.au/research/admin/pubs/reports/database/dynamic/output/person/person.php?person_code=bottima



Dr Bernice Redley

Dr Bernice Redley is a Senior Research Fellow in the Epworth-Deakin Centre for Clinical Nursing Research. She brings a unique combination of knowledge, skills, experience in clinical, health service, academic and Government settings and well established collaborations with local and international experts to research safety and quality in health care delivery. Specific research interests include interprofessional clinical communication; performance of frontline health care teams; and patient and family participation in care delivery.

ResearchGate: www.researchgate.net/profile/Bernice_Redley

DRO: www.deakin.edu.au/research/admin/pubs/reports/database/dynamic/output/person/person.php?person_code=redlebe

MONASH HEALTH

Centre for Nursing Research – Deakin University and Monash Health Partnership



Professor Alison Hutchinson

Professor Alison Hutchinson is Deputy Director of the Centre for Quality and Patient Safety Research and Chair in Nursing at Monash Health where she leads the Centre for Nursing Research – Deakin University and Monash Health Partnership. Her primary research interest centres on improving practice through knowledge translation (translation of evidence into practice), with particular interest in the influences of interprofessional interaction and organizational context on knowledge translation. Alison also has a research interest in the area of nursing ethics in relation to knowledge translation and end-of-life care.

ResearchGate: www.researchgate.net/profile/Alison_Hutchinson/?ev=hdr_xprf

DRO: www.deakin.edu.au/research/admin/pubs/reports/database/dynamic/output/person/person.php?person_code=hutchal



Associate Professor Paul Bennett

Associate Professor Paul Bennett is an Alfred Deakin Postdoctoral Research Fellow at the Centre for Nursing Research – Deakin University and Monash Health Partnership. His research investigates strategies to improve the physical function of people with kidney disease, with a specific focus on strategies to improve the quality of life for this group using exercise, laughter therapy, home dialysis, e-learning, communication techniques and imagery and workforce models. Paul is Editor of the Renal Society of Australasia Journal, Chair of the Kidney Health Australia Nursing Grants Program and foundation member of the Global Expert Forum on Haemodialysis in the Home.

ResearchGate: www.researchgate.net/profile/Paul_Bennett4/?ev=hdr_xprf

DRO: www.deakin.edu.au/research/admin/pubs/reports/database/dynamic/output/person/person.php?person_code=bennepa



Dr Helen Rawson

Dr Helen Rawson is a Research Fellow at the Centre for Nursing Research – Deakin University Monash Health Partnership. Helen has a keen interest in safe and quality care for older people and her current research focus is around health and wellbeing outcomes for older people in the acute, sub-acute and residential aged care settings. Her other areas of interest are the health of individuals from culturally and linguistically diverse population groups.

ResearchGate: www.researchgate.net/profile/Helen_Rawson

NORTHERN HEALTH

Deakin University – Northern Health Clinical Partnership



Northern Health

Originally led by Professor Julie Considine (2010-2012), who now holds the Clinical Chair at Eastern Health. This position has been advertised and a new appointment is pending, for commencement in 2014.

UNITING CARE COMMUNITY OPTIONS

Deakin University – Uniting Care Community Options Partnership



Dr Goetz Ottmann

Dr Goetz Ottmann is the lead researcher of the Uniting Care Community Options/Deakin University Research Partnership. He has extensive experience in mixed methods applied to community aged and disability care. His research focuses on stakeholder engagement, client involvement in decision making, augmented motivational goal setting, personalized and self-directed care, later life resilience, restorative health and health promotion approaches, multiple chronic condition management, child protection for children with disabilities, outcome measures in community care, and online health communication design.

ResearchGate: www.researchgate.net/profile/Goetz_Ottmann

DRO: www.deakin.edu.au/research/admin/pubs/reports/database/dynamic/output/person/person.php?person_code=ottmago

SCHOOL OF NURSING AND MIDWIFERY – BURWOOD AND GEELONG CAMPUSES

Associate Professor Judy Currey

Associate Professor Judy Currey is the Director of Postgraduate Studies at Deakin University. Judy researches processes and outcomes of nurses' decision making for acutely and critically ill patients, and forms of educational preparation required to develop a professional nursing workforce skilled in clinical risk management.

ResearchGate: www.researchgate.net/profile/Judy_Currey

DRO: www.deakin.edu.au/research/admin/pubs/reports/database/dynamic/output/person/person.php?person_code=curreju



Associate Professor Andrea Driscoll

Associate Professor Andrea Driscoll is an NHMRC postdoctoral research fellow at Deakin University. She completed her PhD in 2008 supported by an NHMRC scholarship and a National Heart Foundation grant. Her postdoctoral work has focused on improvements in health service delivery for heart failure patients. She has received national and international awards for her research in cardiovascular disease. She is a fellow of American Heart Association and Cardiac Society of Australia and New Zealand in recognition of her contribution to cardiovascular nursing research.

ResearchGate: www.researchgate.net/profile/Andrea_Driscoll/?ev=hdr_xprf

DRO: www.deakin.edu.au/research/admin/pubs/reports/database/dynamic/output/person/person.php?person_code=driscan





Associate Professor Bodil Rasmussen

Associate Professor Bodil Rasmussen is the Course Leader of Master of Nursing Practice Courses and the Graduate Certificate of Diabetes, including the program for Aboriginal Health workers. Bodil's program of research investigates the impact of changes during life transitions on diabetes self-management and risk management among young adults with diabetes. Bodil works in partnership with professional national and international diabetes organisations and with world renowned researchers in the field of self-management in chronic illness. Bodil leads numerous projects in self-management during life transition in Denmark.

ResearchGate: www.researchgate.net/profile/Bodil_Rasmussen/?ev=hdr_xprf
DRO: www.deakin.edu.au/research/admin/pubs/reports/database/dynamic/output/person/person.php?person_code=rasmubo



Associate Professor Natisha Sands

Associate Professor Natisha Sands' research investigates Mental Health Triage. A key feature of this work has been the rapid transfer of research findings to practice. The aim and focus of this work is improving the quality and safety of practice, and improved outcomes for mental health consumers. This research has produced a body of work that has informed education, policy and practice in the speciality, both nationally and internationally.

ResearchGate: www.researchgate.net/profile/Natisha_Sands
DRO: www.deakin.edu.au/research/admin/pubs/reports/database/dynamic/output/person/person.php?person_code=sandsna



Dr Cate Nagle

Dr Cate Nagle is the Course Director of the Bachelor of Nursing/Bachelor of Midwifery. Cate's PhD thesis was titled: Development and Evaluation of a Decision Aid in Prenatal Testing of Fetal Abnormalities, and her research program is centred on improving clinical outcomes in maternity care. Cate's areas of research include: obesity, diabetes, clinical deterioration, complications in maternity care and the impact of alcohol use in pregnancy. Intersecting Cate's research projects are the themes of communication skills, risk communication and woman centred care.

ResearchGate: www.researchgate.net/profile/Cate_Nagle
DRO: www.deakin.edu.au/research/admin/pubs/reports/database/dynamic/output/person/person.php?person_code=nagleca



Dr Nikki Phillips

Dr Nikki Phillips is the Director of Undergraduate Studies and the Course Coordinator for the Bachelor of Nursing suite of courses, and Deputy Director of the Deakin Centre for Quality and Risk Management in Health- A Joanna Briggs Collaborating Centre. Nikki's research is focused on evidence-based practice and solutions for quality health outcomes and patient safety. Nikki also conducts research into teaching and learning strategies that facilitate the learning of nursing and midwifery students, to ultimately improve patient outcomes.

ResearchGate: www.researchgate.net/profile/Nicole_Phillips4
DRO: www.deakin.edu.au/research/admin/pubs/reports/database/dynamic/output/person/person.php?person_code=phillni

SCHOOL OF EXERCISE AND NUTRITION SCIENCES



Associate Professor Tim Crowe

Associate Professor Tim Crowe is a nutrition academic in the School of Exercise and Nutrition Sciences. His teaching role is in the area of disease prevention and management, particularly diabetes and cancer. He has an active research program centred on clinical-based nutritional interventions in areas such as nutrition support in wound healing and post-surgical complications, and malnutrition identification.

ResearchGate: www.researchgate.net/profile/Tim_Crowe

DRO: www.deakin.edu.au/research/admin/pubs/reports/database/dynamic/output/person/person.php?person_code=croweti

AFFILIATE MEMBERS



Professor David Ashley

Professor David Ashley has had an extensive career in cancer research, education and clinical care dating close to two decades. He has published in excess of 120 peer reviewed publications over that period across a variety of domains including laboratory based cancer research, clinical trials, public health and psycho-oncology research. In recent years his focus has been in particular on neurologic tumours and the epigenetics of cancer. His achievements in research have led to change in practice in the care of children and adults with malignancies including the introduction of new standards of practice for delivery of systemic chemotherapy. Professor Ashley is highly regarded for his work as evidenced by numerous invitations to plenary sessions and symposia of international standing. He has been the principal investigator of a number of national and international studies and is currently the Chief Executive Officer of Australia's premium early phase children's cancer study group (ACCT).

DRO: www.deakin.edu.au/research/admin/pubs/reports/database/dynamic/output/person/person.php?person_code=ashledab



Associate Professor Peter Martin

Associate Professor Peter Martin is a palliative care physician and the Regional Director of Palliative Care, Barwon Health. He is also a clinical associate professor with the School of Medicine, Deakin University. Associate Professor Martin graduated from Queen's University Belfast in 1987 and received a Masters in Medicine (majoring in Palliative Medicine) at the University of Melbourne in 2000. His research interests include multi-modality and multidisciplinary approaches to Cancer Anorexia Cachexia Syndrome and how medical informatics can improve outcomes in palliative care practice. He also continues his commitment to communication skills training with the Cancer Council's VCCCP program.

ResearchGate: www.researchgate.net/profile/Peter_Martin15

DRO: www.deakin.edu.au/research/admin/pubs/reports/database/dynamic/output/person/person.php?person_code=martipe



Dr Mohammadreza Mohebbi

Dr Mohammadreza Mohebbi is a Senior Research Fellow within the Faculty of Health at Deakin University. Prior to joining Deakin, Dr Mohebbi was a Research Fellow in the Department of Epidemiology and Preventive Medicine at Monash University. His primary areas of research are biostatistics and epidemiological aspects of public health and biomedical research. He has been successful in obtaining external research grants, has published in peer-referred journals, and presented at both national and international conferences.

ResearchGate: www.researchgate.net/researcher/13985089_Mohammadreza_Mohebbi



Dr Melissa Weinberg

Dr Melissa Weinberg is an affiliate member of the Centre for Quality and Patient Safety Research. She completed her PhD in Psychology in 2011 and is the Research Fellow of the Australian Centre on Quality of Life. Melissa's primary research area is Subjective Wellbeing, and she manages the Australian Unity Wellbeing Index database, which includes 12 years of data on the wellbeing of Australians.

ResearchGate: www.researchgate.net/profile/Melissa_Weinberg
DRO: www.deakin.edu.au/research/admin/pubs/reports/database/dynamic/output/person/person.php?person_code=weinbme

GOVERNANCE

QPS governance structure comprises three core operating committees each of which has its own Terms of Reference:

QPS EXECUTIVE COMMITTEE

QPS Executive Committee serves as the interface with the University and provides leadership of the research program areas both internally and externally. Committee membership consists of all the clinical chairs, the Head of School and academic chair in nursing. Chaired by the Director of QPS this committee meets on a monthly basis.

QPS GENERAL MEMBERS COMMITTEE

The role of the QPS General Members Committee is to advance the strategic agenda of the Centre via identifying strategies and tactics for achieving QPS key performance indicators, identifying and exploring new opportunities for research and research partnerships, and generally promoting cooperative and collaborative research and scholarship within and outside QPS. Committee membership consists of all QPS members both full and affiliate members. Chaired by the Director of QPS this committee meets on a bi-monthly basis.

QPS EXTERNAL ADVISORY COMMITTEE

The QPS External Advisory Committee is tasked with providing advice to the QPS Executive Committee on achieving QPS mission and performance targets. Chaired by Professor Neville Yeoman, AM, the committee membership consists of the QPS Executive Committee, the Faculty of Health Associate Dean (Research), and five external members:

The inaugural meeting of this Committee was held 27 July 2012. Hereon in the Committee is scheduled to meet twice per year (February/March and October/November) of each calendar year, with the option of calling extraordinary meetings if required.

Chair

Professor Neville Yeomans, AM. Professor Emeritus in the School of Medicine, University of Western Sydney and Director of Research at Austin Hospital, Melbourne

Invited members

Dr Nicola Dunbar, Program Manager, Australian Commission on Safety and Quality in Healthcare
Dr Sue Evans, Acting Director, Centre of Research Excellence for Patient Safety (CREPS) at Monash University
Professor Fethi Mansouri, Director of the Centre for Globalisation and Citizenship, Deakin University
Ms Stephanie Newell, Consumer Advocate, South Australia

STRATEGIC PLANNING DAYS AND GOAL DEVELOPMENT

The strategic direction of QPS is informed and reviewed bi-annually at strategic planning days (SPD) held respectively February and November of each year. Since 2011, the SPD have been facilitated by an external consultant. The SPD's are open to full members and observers (e.g. affiliates, academic staff enrolled in PhD programs and administration staff) as relevant.

In the context of the QPS SPDs, the following strategic goals have been identified and refined:

National safety and quality health standards	<ul style="list-style-type: none"> • Be a leader in the evidence-based implementation of the National Safety and Quality Health Service Standards • Develop a database of validated tools • Provide consultation and assistance to organisations to evaluate patient safety outcomes with use of validated tools • Lead programs of translational research focusing on improving patient safety and quality of care outcomes
Complex and continuing aged care	<ul style="list-style-type: none"> • Lead innovative research on ageing and aged care • Be the research provider of choice for agencies and organisations concerned with the aged care sector • Lead programs of research with a focus on complex and chronic care for ageing populations • Contribute to cultural diversity in ageing research
Global engagement	<p>Build and grow our global footprint via collaborative networks to:</p> <ul style="list-style-type: none"> • Operationalise the global patient safety agenda via existing collaborations with researchers in the UK and North America • Identify patient safety issues and concerns in resource and data poor countries in our region • Assist in the creation of locally adapted standards and guidelines for the delivery of safe and high quality patient care • Educate and offer teaching to nurses and allied health professionals in countries where patient safety measures are low or non-existent • Give recommendations and advice to policymaking bodies on patient safety measures and providing quality patient care • Stimulate awareness of patient safety issues locally and globally
Entrepreneurial engagement	<ul style="list-style-type: none"> • Become a provider of choice for commercial research projects addressing issues related to patient safety and quality care • Provide leading edge professional development programs including: master classes, seminars, conferences and courses on patient safety and quality care, and other topics related to the QPS four programs of research • Be a leader in strengthening the nexus between research and teaching and learning • Achieve financial self-sustainability

ACTIVITIES

QPS has hosted a number of activities aimed at fostering a strong and supportive research culture within both the Centre itself and School where it is located. These activities have included providing seed funding for early and mid-career researchers, providing support grants to HDR students, hosting research forums and conferences, and conducting master classes.

QPS ANNUAL INNOVATION, SEED AND PROGRAM SUPPORT GRANTS

Since its inception QPS has allocated innovation, seed and program support grant funding on a competitive basis for early and mid-career researchers. In keeping with the principles of SRC funding allocation, all successful applications were required to demonstrate capacity to achieve the following criteria-based objectives:

- Strategic advantage
- Contribution to a broader program of research
- Lead to Future Fellowships, competitive ARC/NHMRC grant applications
- Generate high quality publications
- Engage/foster valued partnerships with long-term potential
- Foster interdisciplinary research
- Attract/engage prospective Honours and PhD students

During the period 2010-2013, 26 grants totalling over \$680,000 were allocated. A list of funded projects can be found on page 30 of this report.

RESEARCH STUDENT SUPPORT

In 2012 QPS operationalised provisions for the allocation of HDR Research and Research Training Support funds of up to \$5000 per candidate to assist HDR students pay for the direct costs of their research, including conference attendance. This support was in addition to other DU, Faculty and SONM support that students were eligible to access and may already have accessed. The QPS support scheme was designed to assist HDR candidates to collect data and fund other direct costs of their research not otherwise covered, thereby enabling them to focus on their studies and complete their programs in a timely manner. Recipients were required to be enrolled in an HDR program at Deakin University during the time the expenditure was being incurred. All funding requests were criteria-based and required the recommendation of the candidate's supervisor. A total of six allocations (totalling \$25,000) were made in 2012; of these three were awarded to international students and three to domestic students. In addition, QPS initiated its inaugural Post-Doctoral Prelim Scholarship, which enabled mentorship of an approved supervised research program of a PhD candidate who had submitted his/her thesis and was awaiting results. One scholarship (valued at \$25,000) was awarded under this initiative, which required the candidate to (i) prepare for publication manuscripts reporting the findings of their thesis; (ii) prepare for submission of a competitive grant application in which they are situated as an ECR/post doc fellow. The candidate successfully fulfilled the requirements of the scholarship and was subsequently appointed as an ECR RF at the Deakin-Epworth Centre for Clinical Nursing Research.

RESEARCH FORUMS

Every second month QPS hosts a 'combined research forum', which is open to interested parties outside of the QPS membership. The forums are designed to provide researchers with an opportunity to share and showcase their work. Forum program highlights include the hosting of national and international scholars:

- 2010: Professor Sharon McKinley, Professor of Critical Care at UTS and recipient of a Fulbright Senior Scholar Award, 1998 and a Fulbright Alumni Initiative Grant, 2008. Presented her research and spoke on process of how to make a successful Fulbright application.
- 2011: Professor Nancy Donaldson, RN, DNSc, FAAN, Clinical Professor and Director, UCSF Centre for Evidence-based Quality Improvement—A JBI Affiliate Centre, USA, and Co-Principal Investigator for CALNOC (www.calnoc.org).
- 2012: Professor Anne Sales, RN, PhD, Nursing Business and Health Systems, University of Michigan and Center for Clinical Management Research, Department of Veteran Affairs, USA.

CLINICAL PARTNERSHIP FORUMS

In April 2011 it was suggested by the SONM's clinical partners (Barwon Health, Epworth Healthcare, Eastern Health, Southern Health, Cabrini Health, Northern Health, The Alfred, and UCCO) that there would be mutual benefit in a conjoint meeting being held between the executive directors, clinical governance directors, quality and safety managers, and other interested parties from the partnerships and Deakin University's researchers from the Centre for Quality and Patient Safety Research (QPS) to consider the (then) pending Australian Commission on Safety and Quality in Healthcare (ACSQHC) implementation of the National Safety and Quality Health Service Standards and their use in a model national accreditation scheme for safety and quality in health care (subsequently released October 2011). There was particular interest in exploring possible mutual research opportunities and synergies between the QPS four programs of research and the need to progress a standardised approach to the implementation of the national safety and quality health service standards in Victoria, which it was envisaged could also serve as a benchmark nationally. To this end an inaugural Clinical Partnership Forum meeting was held 22 August to progress this initiative. This was the first such conjoint meeting to occur between the clinical partnerships and QPS (formerly cluster) researchers and stands as an important milestone in the evolution of QPS. This initiative was also the first of its kind to be taken in the State of Victoria. Subsequent forums have been held respectively 5 June 2012, 1 October 2012, and 1 August 2013 and have been identified as providing a unique and valuable opportunity for networking and sharing knowledge and experiences concerning the national patient safety agenda.

CONFERENCES AND MASTER CLASSES

2012 Knowledge Utilization Colloquium (KU12)

In 2012, the 'KU12' was hosted by QPS members. This was an international invitational colloquium of 80 researchers from Australia, UK, USA, Canada, Europe and Asia. The venue for the 2012 Knowledge Utilization Colloquium was Deakin University, City Conference Centre, Melbourne, Australia on October 16-17th. The international planning committee comprises: Tracey Bucknall (Australia), Carole Estabrooks (Canada), Brendan McCormack (UK), Jo Rycroft-Malone (UK), Marita Titler (USA), Lars Wallin (Sweden), Jacqueline Tetroe (Canada), Christian Helfrich (USA) and Margaret Harrison (Canada).

The focus for KU12 was 'Innovation in Knowledge Utilisation.' It had two themes: Advances in Measurement and Innovation in Behavioural Change. Attendees explored new research measures and technologies available for measuring uptake in practice. They also explored approaches that move beyond telling others what is best in a rational systematic way to the more understated process of influencing others through engagement and enlightenment.

In the spirit of the colloquium theme of innovation, it was opened virtually by Deakin's Vice Chancellor, Professor Jane den Hollander from our Waterfront campus. Associate Professor Shannon Scott, from the University of Alberta, Canada, Dr Doug Creighton from the Centre for Intelligent Systems Research, Deakin University, and Ms Susie McFarlane, an e-Learning Educational Developer, from Deakin University were invited speakers to stimulate the thinking of participants and challenge the way researchers interact with technologies in research.

International Centre for Nursing Ethics (ICNE) 14 Annual Conference and Human Rights and Nursing Award (16-17 May, 2013)

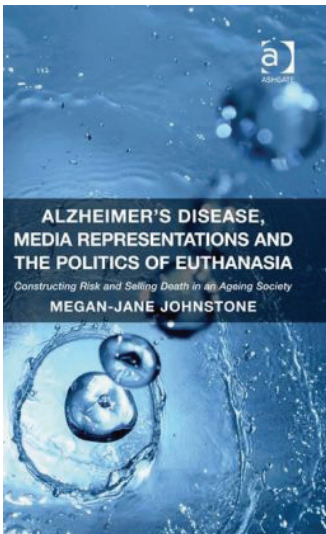


In May 2013, Deakin University's Centre for Quality and Patient Safety Research (Health Care Ethics and Policy Development program) and Deakin University's School of Nursing and Midwifery in collaboration with the International Centre for Nursing Ethics (ICNE) co-hosted the ICNE 14th annual conference, the theme of which was: 'Ethical issues at the end of life: practice and policy imperatives in healthcare.' An annual event, this was the first time the conference was hosted in Australia. Opened by Deakin's Vice Chancellor Professor Jane den Hollander, the key issues addressed included nurse-administered palliative sedation, moral risk and moral luck in end-of-life decision making, cross-cultural considerations, and evidence-based ethics in healthcare policy and practice. A highlight of the conference was the

co-hosting of the ICNE annual Human Rights and Nursing Award, which is presented to any nurse in recognition of an outstanding commitment to human rights and exemplifying the essence of nursing's philosophy of humanity. Criteria for the award are:

- The contributions and accomplishments of the nominee must be of international significance to human rights.
- The contributions of the nominee have influenced health care and/or nursing practice.

There were three recipients of the Human Rights and Nursing Awards 2013: Dr Elizabeth Crock, RN, PhD of the Royal District Nursing Service, and Mr Tom Carter and Ms Elizabeth (Beth) Hatch (conjoint award), both of whom initially worked at Melbourne Communicable Diseases Centre as contact tracers. The awards were presented by Acting Commissioner Karen Toohey from the Victorian Equal Opportunity and Human Rights Commission.



A second highlight of the conference was Deputy Vice Chancellor Lee Astheimer's launch of Professor Megan-Jane Johnstone's controversial book: *Alzheimer's disease, media representations and the politics of euthanasia: constructing risk and selling death in an ageing society* (published by Ashgate, UK).

Drawing on extensive data including news media reports and commentaries, documentaries, courts and court reports, films, websites, professional literature and government and non-government agencies, this book explores the 'Alzheimerisation' of the euthanasia debate, examining the shift in recent years in public attitudes towards the desirability and moral permissibility of euthanasia as an end-of-life 'solution' for people living with the disease - not just at its end stage, but also at earlier stages. With attention to media representations and public understandings of Alzheimer's disease, *Alzheimer's disease, media representations and the politics of euthanasia* sheds light on the processes contributing to these changes in public opinion, investigating the drivers of vexed political debate surrounding the issue and examining the manner in which both sides of the euthanasia debate mobilise support, portray their opponents and make use of media technologies to frame the terms of discourse. Further information: www.ashgate.com/isbn/9781409451921

Master Class: Clinical Leadership in Patient Safety (25 November, 2013)

In November 2013, QPS sponsored the first in what it hopes will become an annual series of patient safety master classes. The inaugural Master Class was designed to build high level skills in clinical leadership with a focus on patient safety. Upon completion of the master class attendees were expected to be able to:

- Evaluate patient assessment findings against the evidence related to predictors of deterioration and implement appropriate interventions for patients with signs of deterioration
- Discuss the importance of maintaining positive communication and relationships between health professionals during usual practice and adverse events
- Demonstrate an understanding of, and how to use communication frameworks
- Analyse team performance at a unit level and rationalise strategies to ensure that team function contributes to positive patient safety outcomes
- Rationalise leadership and change management strategies that may be used in a clinical environment to facilitate effective change and improve the use of research evidence in practice
- Identify specific patient safety considerations for patients from culturally & linguistically diverse backgrounds and rationalise a plan of care to decrease risks for this patient population

GLOBAL ENGAGEMENT

The DU Centre for Quality and Patient Safety Research (QPS) is leading innovative programs of research that have as their focus patient safety and quality care. Through its research partnerships with local health services and international collaborators, as well as local and international PhD students, QPS has reached a position where it has the capacity to expand its activities to contribute to a broader international agenda for research and training in patient safety and quality care in low and middle income countries, and to engage more fully at a regional and global level. To this end, over the past two years, QPS has devoted considerable attention to developing and operationalizing its internationalisation and global engagement strategy, and aligning it with the Deakin international research plan and goals.

A highlight of the period currently being reported here was QPS successful application in 2013 for a Deakin International Research Development Scheme (IRDS) grant. The purpose of the grant was to host a delegation from Bhutan to begin collaboration on a new research capacity building project aimed at progressing a new initiative: 'Patient Safety Beyond Borders' (PSBB). QPS success was based on its application addressing 'important research questions strategic to Deakin's research profile, involving a number of staff and targeting high priority regions, sectors or existing Deakin partnerships.' Further details can be found under the 'Flagship project' section on page 22 of this report.

QPS NEWSLETTER

In July 2011, QPS launched the inaugural issue of its biannual newsletter. This four page publication provides a snapshot of QPS research and related activities and can be accessed via the QPS website.

FLAGSHIP PROJECTS

QUALITY AND PATIENT SAFETY

Translations of evidence into pain management



The problem of uncontrolled postoperative pain is well documented. Worldwide prevalence studies have shown up to 80% of patients experience significant pain after surgery and they receive less than 50% of the analgesics they are prescribed. Similar Australian studies have shown that over 40% of patients experience unnecessary pain after surgery. Ineffective pain management has severe moral, political and financial implications for health. In particular, poorly managed postoperative pain is linked to suboptimal quality

of care processes and can pose serious risks for patients' safety, as well as having a negative impact on patients' general functioning and wellbeing. Effective use of analgesics offers significant health benefits and is associated with positive outcomes for both patients and healthcare organisations. Given the significant benefits of effective pain management and the potential consequences of poor analgesic control, it is imperative that current practices become consistent with guidelines developed from the best available scientific evidence.

In 2010 Professor Mari Botti and her team were awarded an ARC Development grant to collate the best available evidence to inform the development of standard care processes to address the problem of ineffective pain management in postoperative care. To progress this innovative study the investigators have partnered with clinicians involved in medication prescribing, pain assessment and clinical management to address the complex problem of postoperative pain management through two fundamental components:

- the development of a management algorithm for postoperative pain (MAPP) based on best available evidence to support for clinical decision making
- the implementation of the MAPP into clinical practice in a way that ensures uptake, integration and sustainability.

Evidence shows that interventions to improve postoperative pain management often fail because they are not sustained in the clinical environment once the initial implementation period is over. To avoid this problem, the Promoting Action on Research Implementation in Health Services (PARIHS) framework will be used to guide the clinical implementation of the MAPP, as it has been successfully used previously in improving postoperative pain management. The intervention will be tested in three sites across public and private hospitals to assess applicability in different healthcare contexts.

This project has potential economic and social benefits for Australia through improving care processes related to the management of postoperative pain, therefore minimising the adverse outcomes associated with unrelieved pain. The project will provide guidance for the formulation of educational programs and practice protocols and will inform policy development locally, nationally and internationally.

The research team includes: Prof Mari Botti, Prof Tracey Bucknall, Prof Maxine Duke, Prof Megan-Jane Johnstone, Prof Bridie Kent, Dr Rosemary Watts, Prof Richard Steiger, Dr Bernice Redley, Prof Julie Considine

Contact: Prof Mari Botti – mari.botti@deakin.edu.au

‘Listen to me, I really am sick!’ Understanding patient perspectives in triggering responses to medical emergencies



Patients entering hospital expect that the care they receive is safe and unlikely to cause harm. Yet hospital systems may fail deteriorating patients, with detailed descriptions of suboptimal care requiring patient admissions to intensive care and high rates of serious adverse events (SAEs) resulting in death and severe disability. Many SAEs that occur in hospitals are often preceded by warning signs that are not always acted upon. Significant research has focused on the clinician detecting and responding to patient deterioration. However there has been no research that explores the patient’s perspective and role in initiating clinician and service responses to critical illness. A recent priority in healthcare is to improve the safety and quality of

health care by placing patients at the centre of care; by providing respect for, and response to, patient preferences, needs and immediate treatment requirements.

In 2012 Professor Tracey Bucknall and her team received funding from the Australian Research Council (Linkage Grant) and Australian Commission of Safety and Quality in Health Care (ACSQHC) to investigate patients’ perceptions and role in detecting and communicating their deteriorating status and the impact on prevention of SAEs. Using a qualitative design involving patient and family member interviews and medical record reviews, the results from this study will provide unique insights into patient and family member interpretations of events during medical emergencies. It will also inform the development of strategies to improve health service planning and delivery, thereby reducing preventable SAEs. The stories will be used to develop case-based scenarios for medical and nursing students to develop their clinical reasoning skills in detecting and managing deteriorating patients.

The research team includes: Prof Tracey Bucknall, Prof Alison Hutchinson; Partner Investigators – Prof Michael Buist, Prof Brendan McCormack, Dr Nicola Dunbar, Dr Suellen Allen, A/Prof Daryl Jones; Partner Organisations – University of Ulster (UK), Australian Commission of Safety and Quality in Health Care, Austin Hospital (Melbourne), Cabrini Health (Melbourne), North West Area Health Service (Tasmania); and PhD Candidate – Ms Jessica Guinane

Contact: Prof Tracey Bucknall – tracey.bucknall@deakin.edu.au

The first reported ZUMBA GOLD dialysis program



People requiring dialysis three times per week have only limited exercise leading to muscle deconditioning, a reduced quality of life and increased risk of injury. Low-impact exercise programs during dialysis have been found to be safe and beneficial for this group. Exercise can alleviate the boredom of receiving dialysis, creating an exercise-focused positive environment in the dialysis centre. A popular exercise program designed for people with physical limitations and inactive older people is Zumba Gold®. This is a program in which the Latin and international dance rhythms created in the original Zumba® program are adapted for older populations.

This project explored the feasibility of implementing a modified Zumba Gold® program for patients at the Moorabin Dialysis Centre. Twenty, 30-minute sessions were completed in the unit over a two week period. Choreographed to music the exercises included various shoulder, arm, and leg movements, including shoulder squeezes, arm lifts, knee lifts and toe taps. Participants became increasingly active and engaged as the sessions progressed, and the instructor adjusted movements accordingly. Several staff and other dialysis patients spontaneously participated in the exercises.

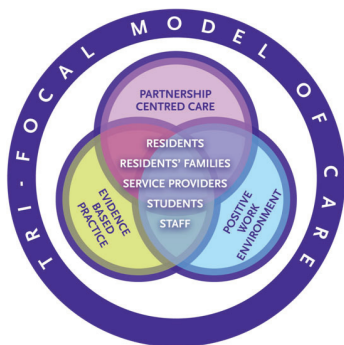
The study has found that an intradialytic modified form of ZUMBA GOLD® is a safe and feasible exercise program for people receiving hemodialysis. The intervention was acceptable to patients, was inexpensive, and did not adversely impact on the hemodialysis treatment. It was fun and encouraged staff and other patients to join in the exercises.

The research team includes: A/Prof Paul Bennett, Ms Ann Marie Corradini, Ms Cherene Ockerby, Ms Tania Cossich

Contact: A/Prof Paul Bennett – p.bennett@deakin.edu.au

COMPLEX AND CONTINUING AGED CARE

The Tri-focal Model of Care: Teaching and Research Aged Care Services



The Tri-focal Model of Care - Teaching and Research in Aged Care Services project, funded by the Department of Health and Aging, commenced in 2012. This project is led by Professor Alison Hutchinson, Chair in Nursing, Centre for Nursing Research-Deakin University and Monash Health Partnership, and Professor Bev O'Connell, Dean of the Faculty of Nursing, University of Manitoba, Canada.

The Trifocal Model of Care promotes partnership-centred care, evidence based practice and positive and healthy work environments in Residential Aged Care (RAC). The Model takes account of Australian regulatory requirements in relation to the Accreditation Standards and brings together research, education, and practice to help transform residential aged care. The Tri-focal

Model of Care education program consists of three professional modules and six clinical modules.

This project has evolved to involve the implementation of the Tri-focal Model of Care in seven RAC facilities within four healthcare organisations located in metropolitan and regional Victoria. Deakin University researchers are working in collaboration with facility staff to promote the principles of the Model and implement the Tri-focal Model of Care curriculum. Further information about the project, the Model, and the education modules can be found on the Centre for Innovation and Education in Aged Care website: www.deakin.edu.au/health/nursing/cieac

The research team includes: Prof Alison Hutchinson, Prof Bev O'Connell, Prof Tracey Bucknall, DR Mary Stevens, Dr Joan Ostaszkiwicz, Dr Helen Rawson, Dr Helen Forbes, Ms Cherene Ockerby, Mr David McMillan, Ms Cheryl Turner

Contact: Prof Alison Hutchinson – alison.hutchinson@deakin.edu.au

Quality Use of Medicines and Glucose Lowering Medicines in Aged Care



Diabetes is the leading chronic disease in Australia, especially in older people and the prevalence is increasing. Medicines play a key role in diabetes management and enhance physical functioning and quality of life (benefits) but are associated with significant adverse events (risks) that compromise safety and quality of life. In June 2013 Professor Trisha Dunning and her team received funding from the Australian Government Department of Health and Ageing Aged Care Service Improvement and Healthy Ageing Grants Fund to investigate the Quality Use of Medicines (QUM) and Glucose Lowering Medicines (GLM) in Aged Care. The aim of the project is to develop and evaluate QUM GLM

resources and an education program for older people with diabetes and aged care staff. The focus of the program will be on how to apply the QUM framework to everyday clinical decision-making and when educating older people about their GLMs.

Previous research conducted by Professor Dunning and colleagues indicates that aged care staff have a limited understanding of the pharmacokinetics and pharmacodynamics of GLMs, key aspects of managing insulin, and how to interpret blood glucose patterns and HbA1c levels in relation to medicines. The QUM framework has an integral place in health care generally and diabetes management in particular. However, there is a demonstrable need to enable aged care staff to develop the knowledge and competence necessary to apply QUM principles when making clinical decisions, and administering and monitoring the effects of GLM. In addition, community dwelling older people with diabetes who self-manage their medicines or manage their medicines with some support from others require specific personalised information about how to use their GLMs to maximise benefit and reduce the risks.

In light of this observation, a compelling feature of the project is its objective to operationalise QUM principles for use at the 'bedside.' The new resources will improve the health, quality of life and safety of older people with diabetes. The study is highly significant given the high rates of medicine use by older people with diabetes (an average of 8 medicines in multiple doses per day) and the medicine-related adverse events that lead to hospital admissions and significant morbidity and mortality in older people.

The research team includes: Prof Trisha Dunning, Dr Sally Savage, Ms Ann Hague

Contact: Prof Trisha Dunning – trisha.dunning@deakin.edu.au

CHOICES in Consumer-Directed Aged Care

The CHOICES project, funded by the Department of Health and Ageing, commenced in 2012. The project is led by Dr Goetz Ottmann, the inaugural Senior Research Fellow of the Uniting Care Community Options/Deakin University research partnership. The CHOICES model addresses the support needs of older people with complex care needs living in rural/regional, culturally and linguistically diverse, and Aboriginal and Torres Strait Islander communities. It has been specifically designed for community aged care recipients who would like to have more input into and control over their own care arrangements. The model is based on the evidence gathered by a previous ARC Linkage-supported research project that developed and evaluated a self-directed community aged care model in partnership with older people, carers, and service provider staff. The evaluation of that model demonstrated that a capacity building- focused, self-directed care approach gives rise to important synergies that not only increase older people's satisfaction with their care arrangements and standard of living, it also gives older people the sense that they are having greater control over their care arrangements and are treated with dignity and respect. Moreover, the research also suggests that psycho-social support provided in conjunction with more flexible support options improves their outlook on what they can achieve in life. These outcomes stand in stark contrast to the results associated with consumer-directed care models implemented in the US and UK. The CHOICES project produced four animation-supported training modules aimed at communicating the key elements of the model (restorative health maintenance, motivational goal setting, and assisted self-direction) to case managers. The CHOICES project will be evaluated during 2014 employing a stepped wedge trial design. Further information about the project can be found on the CHOICES website: www.choicesinagedcare.com.au.



The research team includes: Dr Goetz Ottmann, Ms Anna Millicer, Ms Barbara Blakey, Ms Margarita Maragoudaki, Ms Claire Preistly

Contact: Dr Goetz Ottmann – goetz.ottmann@deakin.edu.au

INTERNATIONALISATION AND GLOBAL ENGAGEMENT



Co-creating a program of patient safety research and training with researchers from the Royal Kingdom of Bhutan

WHO Patient Safety (a global research program of WHO) has identified patient safety 'as a global issue affecting countries at all levels of development'. Commensurate with this observation, patient safety research and training have been designated as global imperatives. WHO Patient Safety explains, 'understanding the magnitude of the problem and the main contributing factors is essential in order to devise appropriate solutions'. It further explains that understanding

the local cultural context of patient safety initiatives and how best to enable the adaptation of 'effective, appropriate and affordable solutions', particularly in countries that are under-resourced, is also essential. To this end WHO Patient Safety has identified a number of global priority areas, i.e., 'where there are substantial knowledge gaps' and where 'further knowledge would significantly contribute to improving patient safety and reducing harm'.

Bhutan is currently facing the challenge of developing mechanisms for scoping and improving understanding of the magnitude of patient safety issues in its hospitals and devising appropriate (locally/culturally adapted) solutions to the problems identified. In keeping with WHO Patient Safety designated global priority areas, QPS and its collaborating partners are committed to working with the RIHS to co-create a program of Research and Training in Patient Safety and Quality Care, which addresses WHO designated priorities. To this end, in 2013, QPS successfully applied for a Deakin International Research Development Scheme (DIRDS) grant to host a visit (14-18 October, 2013) by Dr Chench Dorjee, Director of the Royal Institute of Health Sciences (RIHS), Bhutan, and Dr Neyzang Wangmo, Dean (Research and External Linkages) of the Royal Institute of Health Sciences (RIHS). The purpose of the visit was to commence collaborative work with QPS researchers on co-creating a program of patient safety research and training for future research funding and other related initiatives. The key objectives of the week long collaboration forum (which included face-to-face meetings and field visits), were to:

- Develop a common understanding of the WHO global agenda for patient safety and quality care in resources and data poor nations
- Develop a mutual, culturally informed and comparative understanding of patient safety processes and concerns in Bhutanese and Australian hospitals
- Discuss the vision and mission of the ‘Patient Safety Beyond Borders’ (PSBB) initiative being led by Deakin-QPS
- Explore challenges and opportunities for collaboration to develop and progress patient safety research and training programs/projects using:
 - Methodologies for developing locally adapted (culturally appropriate) solutions
 - Processes for ensuring equity and sustainability
- Discuss processes for co-developing a strategic plan and action agenda (time permitting draft a preliminary plan)
- Identify preliminary projects and resources
- Build relationships with new colleagues and prospective partners

The objectives were achieved and QPS is in the process of planning further activities to progress its collaboration with RIHS. This has included Professor Megan-Jane Johnstone, Director of QPS, undertaking a study tour in Bhutan, where she met with officials in the Ministry of Health and presented a series of lectures to RIHS and hospital staff on advancing patient safety in resources and data poor nations. Following the Bhutan study tour, Professor Johnstone travelled to Thailand where she engaged in a similar forum with colleagues at Mahidol University, Bangkok. The objectives of the forum were the same as those set for the Bhutan forum. During her four day visit she presented a series of lectures to researchers and PhD students in the Faculty of Nursing on processes for advancing patient safety education and research in the ASEAN, South and South East Asian region.

A highlight of the week long forum was QPS hosting the signing of a Memorandum of Understanding (MOU) between Deakin University, School of Nursing and Midwifery and RIHS.



Front left to right: Prof. Brendan Crotty (PVC Health, Deakin University), Dr Chench Dorjee (Director, RIHS, Bhutan);
Back Left to right: Prof Maxine Duke (head, School of Nursing and Midwifery), Dr Neyzang Wangmo (Dean, Research and External Linkages, RIHS, Bhutan)

AWARDS, PRIZES AND DISTINCTIONS

ASSOCIATE PROFESSOR PAUL BENNETT

- *Alfred Deakin Postdoctoral Research Fellowship 2012*: Awarded to A/Prof Paul Bennett for the project, 'Improving the physical function of people with end stage kidney disease on dialysis'. A/Prof Bennett is the first QPS member to be awarded an Alfred Deakin Postdoctoral Research Fellowship

PROFESSOR MARI BOTTI

- *Alfred-Deakin Professor by the Deakin University Council 2012*: The title of Alfred Deakin Professor is the highest honour that Deakin can bestow upon its academic staff members and it is testament to the outstanding and sustained contribution Prof Botti has made to nursing

ASSOCIATE PROFESSOR JUDY CURREY

- *Australian Learning and Teaching Council Citation for Outstanding Contributions to Student Learning 2011*: Awarded for commitment to developing advanced critical thinking, problem solving and teamwork skills in students through teaching excellence in postgraduate critical care nursing courses
- *WJC Banks Award for Distinguished Contributions to Teaching and Learning and Deakin University Teacher of the Year 2010*
- *Vice-Chancellor's Award for Distinguished Teaching 2010*
- *Deakin University Award for Distinguished Teaching Excellence 2010*
- *Faculty of Health, Medicine, Nursing and Behavioural Sciences Innovation Award 2010*

PROFESSOR JULIE CONSIDINE

- *Julie Finucane OAM, Medal for Leadership in Emergency Nursing 2013*: The College of Emergency Nursing Australasia (CENA) highest award of service recognition. Awarded to Prof Considine for outstanding commitment to the leadership of the profession and discipline of Emergency Nursing, and to the College of Emergency Nursing Australasia
- *College of Emergency Nursing Australasia Founding Fellowship 2012*: Bestowed by Australasian College of Emergency Nursing to Prof Considine for outstanding contribution to emergency nursing in Australasia
- *Australian Government Office for Teaching and Learning Citation for Outstanding Contributions to Student Learning 2012*: Awarded for commitment to a teaching-evidence-practice nexus in specialist and advanced nursing courses to develop clinical excellence and enhanced quality and safety of healthcare

ASSOCIATE PROFESSOR ANDREA DRISCOLL

- *American Heart Association International Fellowship 2012*: Bestowed to A/Prof Driscoll in recognition of outstanding research in the field of cardiac nursing
- *Cardiac Society of Australia and New Zealand Fellowship 2012*: Bestowed to A/Prof Driscoll in recognition of outstanding research in the field of cardiac nursing

PROFESSOR TRISHA DUNNING

- *Royal College of Nursing Australia (RCNA) Distinguished Life Member Award 2011*: Awarded in recognition of Prof Dunning's long continuous service to the profession and for work that has made a significant contribution to the College and influenced nursing practice
- *International Diabetes Federation Inaugural Education Award Lecture 2011*
- *Diabetes Australia Victoria Outstanding Achievement Award 2010*: Awarded to Prof Dunning for Contribution to diabetes in Victoria, nationally and internationally; presented on World Diabetes Day

PROFESSOR MEGAN-JANE JOHNSTONE

- *Royal College of Nursing Australia (RCNA) 2010*: Awarded to Prof Johnstone in recognition of her sustained authorship resulting in publications in refereed journals and books that address issues of contemporary significance to the profession (ethics and health care), provide critical analysis of the issue, challenge the current situation, and argues for reform or change

PROFESSOR BRIDIE KENT

- *Smartward Development Phase 2 and 3: Clinical Testing 2011*
- *Capstone International Nursing Book Award from Sigma Theta Tau International 2011*: This award recognises the excellence of Prof Kent's work in the nursing profession, with particular reference to her publication 'Clinical Context for Evidence-Based Practice', co-authored by Prof Brendan McCormack. The award was presented to Bridie by Dr Patricia Thompson, Chief Executive Officer of STTI (left) and Dr Karen Morin, past President of STTI (right)
- *Smartward Development Phase 1 2010*



ASSOCIATE PROFESSOR BODIL RASMUSSEN

- *Citation for Outstanding Contribution to Student Learning from Office of Learning and Teaching 2013*
- *Vice-Chancellor's Award for Distinguished Teaching (Deakin University) 2012*

ASSOCIATE PROFESSOR NATISHA SANDS

- *Kathleen AB Smith Memorial Award in Nursing 2012*: Bestowed to A/Prof Sands by the Alfred Hospital, Melbourne, in recognition of outstanding publication: Sands, N., Elsom, E., Maragu, E., Keppich-Arnold, S & Henderson, K. (2012). Mental Health Telephone Triage: Managing Psychiatric Crisis and Emergency. *Perspectives in Psychiatric Care*. ISSN 0031-5990.

QPS SEEDING GRANTS 2010–2013

Project Title	Investigator/s	Year Awarded
Virtual reality and restorative health in the home: What works with older people?	CI: G. Ottmann EI: A. Nolan, M. James	2013
Managing the care of older patients in the emergency department	CI: H. Rawson M: J. Considine, P. Bennett	2013
Measuring patient participation in health care: A systematic review	CI: N. Phillips, M. Street M: M. Botti, B. Kent	2013
Self-management needs among young people with type 2 diabetes: An Australian and Danish cohort comparison (Pilot Study)	CI: B. Rasmussen, T. Livingston, T. Dunning, V. Lorentzen, H. Therkilden Maimdahl	2012
Post-operative Risk and Surgical Monitoring (PRISM)	CI: M. Street, N. Phillips M: B. Kent	2012
The influence of organisational interventions on the quality of maternity care	CI: A. Hutchinson, C. Nagle EI: D. Bick, G. Teale M: B. Kent	2012
Influence of speciality cardiac nursing on adverse events and costs	CI: A. Driscoll, J. Currey AI: P. Davidson	2012
Subjective wellbeing of people with chronic disease	CI: P. Bennett, M. Weinberg M: R. Cummins	2012
Patient outcomes of inter-professional handover communication in the Post Anesthetic Care Unit (PACU)	CI: B. Redley EI: B. Wood, G. Lethbridge, D. Williams, S. Riley M: M. Botti	2012
Have you SCAND MMe?	CI: B. Redley EI: D. Howe, T. Baker M: M. Botti	2012
Tools to evaluate Structured Interdisciplinary Bedside Rounds (SIBR) in acute care: A pilot in general medicine	CI: B. Redley EI: K. Stockman M: P. Bennett	2012
Primary prevention of gestational diabetes in overweight and obese women	CI: C. Nagle M: H. Skouteris EI: R. Kennedy, P. Mayall	2012
Identification of factors which contribute to extended length of stay in Emergency Department for patients from residential aged care versus community settings	CI: M. Street, J. Considine, G. Ottmann M: B. Kent, T. Livingston	2011

The evidence-practice gap for management of “behaviours of concern”	CI: P. Lakhan M: B. O’Connell	2011
Improving quality of life outcomes for people with multiple myeloma	CI: T. Livingston, M. Botti EI: M. Craike, K. Hose, S. Harrison, K. Courneya, A. Hordern	2011
Development of the Pressure Injury Prevention Research (PIPR) Group: Stage 1	CI: B. Kent, T. Bucknall, A. Hutchinson EI: W. Chaboyer, C. Rickard	2011
Patient participation in symptom management in acute care settings: An international pilot study	CI: M. Botti, T. Livingston, M. Johnstone, M. Duke, G. Ottmann, B. Rasmussen, E. Cohen	2011
Systematic review: Aged care	CI: V. Anna M: B. O’Connell	2010
Increasing self-management for people with chronic kidney diseases	CI: P. Bennett EI: A. Bonner	2010
Detailed analysis of unplanned transfer from subacute to acute care	CI: J. Considine EI: B. O’Connell, B. Kent, T. Dunning, M. Street M: M. Botti	2010
Interprofessional interaction and knowledge translation: A systematic review	CI: A. Hutchinson EI: A. Sales, C. Brand	2010
Achieving consensus for assessing patient discharge from post-anaesthetic care	CI: N. Phillips, M. Street M: B. Kent	2010
Post-anaesthetic discharge scoring criteria: A comparative systematic review	CI: N. Phillips, M. Street	2010
Validating the clinical descriptors of the ATS mental health triage sub-scale	CI: N. Sands EI: M. Gerdtz, J. Hosking	2010
Disability strategic scoping project with NDS Victoria	CI: G. Ottmann, C. Gaskin	2010
Self-management of diabetic women in transition to motherhood: Survey development	CI: B. Rasmussen	2010

DEAKIN-LED EXTERNAL FUNDING 2010–2013

CATEGORY 1-4 AUSTRALIAN COMPETITIVE GRANTS*

Project Title	Investigator/s	Industry Partner/ Funding Body	Year Awarded
Predicting serious in-hospital adverse events: Evidence-based risk assessment for patients requiring emergency admission	J. Considine, J. Currey, D. Jones	Nurses Board of Victoria Legacy Limited	2013
Heart failure nurse practitioners: Do they improve patient outcomes?	A. Driscoll, D. Hare, O. Faroque	Department of Health	2013
Improving health literacy in heart failure	A. Driscoll, A. Beauchamp, R. Osborne	Department of Health	2013
Quality use of medicines and glucose lowering medicines in aged care	T. Dunning, S. Savage, A. Hague	Department of Health	2013
Nursing roles and strategies in end-of-life decision making involving older people from culturally and linguistically diverse (CALD) backgrounds admitted to Victorian hospitals for end-of-life care	M. Johnstone, A. Hutchinson, B. Redley	Nurses Board of Victoria Legacy Limited	2013
The efficacy of a referral and physical activity program for survivors of prostate cancer	T. Livingston, J. Salmon, K. Courneya, C. Gaskin, M. Botti, S. Broadbent, B. Kent	Prostate Cancer Foundation of Australia	2013
A multi-centre randomised controlled trial to test the efficacy and cost effectiveness of an intervention to reduce carer burden and depression among caregivers of cancer patients	T. Livingston, M. Botti, J. Chirgwin, R. Osborne, D. Ashley, S. McGuigan	National Health and Medical Research Council - Project Grant	2013
Improving clinical outcomes in maternity care: Recognition and response to clinical deterioration in the maternity patient	C. Nagle, T. Bucknall, B. Kent	Nurses Board of Victoria Legacy Limited	2013
An interactive computer program for assessing competency in telephone-based mental health triage: A pilot study	N. Sands	Telematics Course Development Fund - Trust Grant Research	2013

Smartward - Evaluation of technology within simulated and real-life nursing settings	M. Botti, B. Kent, L. Nguyen, B. Redley	Smartward Pty Ltd	2012
The communication of acute postoperative pain (CAPP): The clinically significant meanings behind numerical pain ratings	M. Botti, S. Hunter	National Health and Medical Research Council - Scholarship	2012
Listen to me, I really am sick! Understanding patient and family perspectives in triggering responses to medical emergencies	T. Bucknall, A. Hutchinson	Australian Research Council - Linkage Grant, ACSQHC Australian Commission on Safety and Quality in Health Care	2012
Does a nurse-led high intensity transitional care program improve outcomes?	A. Driscoll, DL. Hare, H. Krum, P. Srivastava	Nurses Board of Victoria Mona Menzies	2012
Centre for Innovation and Education in Aged Care (new Wicking)	A. Hutchinson, B. O'Connell, H. Forbes	ANZCT Grant - J.O & J.R Wicking Trust - Medical & Scientific Research	2012
Teaching and Research Aged Care Services Initiative (TRACS) - Stage One	A. Hutchinson, B. O'Connell, M. Hawkins	Department of Health and Ageing - DHA Tender	2012
Using an audit with feedback knowledge translation intervention to promote safety and quality in health care	A. Hutchinson, T. Bucknall, A. Sales	Australian Research Council - Linkage Grant and Cabrini Hospital	2012
Observational study of symptom management in palliative care practice	A. Hutchinson, T. Bucknall, T. Walker, K. Wright, C. Weeden	Peter Meese Seeding Grant	2012
Application of the International Standards for the professional practice of internal auditing in the clinical setting in healthcare: A systematic review of the literature	A. Hutchinson, M. Johnstone, B. Clarke	East Grampians Health Service	2012
The Tri-Focal Model of Care: Teaching and research aged care services	A. Hutchinson, B. O'Connell, T. Bucknall, M. Hawkins	Department of Health and Ageing - TRACS Grant	2012
Person-centred, consumer-directed community aged care: Translating the evidence into practice	G. Ottmann	Department of Health and Ageing	2012
Developing an evidence-based 'best practice' approach to support life goal exploration with people with an intellectual disability and other cognitive impairments who are formal communicators	G. Ottmann	Department of Families, Community Services and Indigenous Affairs - DFCSIA Tender	2012

Minimising post-operative risk through PACT	M. Street, B. Kent, N. Phillips	HCF Health and Medical Research Foundation - Hospitals - Contribution Fund	2012
Evaluation of goldfields kidney disease nursing management program	P. Bennett, B. O'Connell	WA Country Health Service Goldfields	2011
Translation of evidence into pain management practices in acute care environments	M. Botti, T. Bucknall, M. Duke, M. Johnstone, B. Kent, R. Watts, R. Steiger, B. Redley, J. Considine	Australian Research Council - Discovery Grant Epworth HealthCare	2010
Patient outcomes after open and minimally invasive surgery for prostate cancer	M. Botti, A. Costello, B. O'Connell, S. Lo	Prostate Cancer Foundation of Australia	2010
Assessing the effects of an audit and feedback intervention on nurses' symptom management decisions in palliative care	T. Bucknall, A. Hutchinson, A. Sales, J. Essen	Peter Meese Research Grant	2010
The efficacy of a referral and physical activity program for survivors of prostate cancer	T. Livingston, M. Botti, C. Gaskin, B. Kent, J. Salmon, K. Courneya, S. Broadbent	Australian Research Council - Linkage Grant and Prostate Cancer Foundation of Australia	2010

*Source: Deakin Research Master database [accessed September 2013]. In addition to these Deakin-led grants, QPS researchers are also co-chief investigators and associate investigators on a number of grants led by collaborating researchers at other universities. Further information about these collaborative projects can be found via the researcher's web links located under their respective profiles.



WARRNAMBOOL CAMPUS

Princes Highway
Warrnambool Victoria

GEELONG WAURN PONDS CAMPUS

Pigdons Road
Waurnd Ponds Victoria

GEELONG WATERFRONT CAMPUS

1 Gheringhap Street
Geelong Victoria

MELBOURNE BURWOOD CAMPUS

221 Burwood Highway
Burwood Victoria

deakin.edu.au

Published by Deakin University MONTH 2013. While the information published in this guide was accurate at the time of publication. Deakin University reserves the right to alter, amend or delete details of course offerings and other information published here. For the most up-to-date information please review our website at deakin.edu.au

CRICOS Provider Code: 00113B

