

# UNDERGRADUATE PSYCHOLOGY

2014


Melbourne | Geelong | Warrnambool | Off campus



**MARIEL MESSER**

Bachelor of Psychology, see page 9.

# EXPLORE THE WORLD OF PSYCHOLOGY AT DEAKIN



Psychology is a scientific discipline, which studies the mind and its processes, behaviour and mental states.

There is a heightened emphasis on mental health in the modern world. A large portion of research and research training in Deakin's School of Psychology is focused on mental health outcomes for people outside the mainstream, targeting those less likely to access treatment and those at risk of chronic and severe mental ill health.

Our psychology courses are community-relevant, solution-focused and aim to contribute to the production of high-quality, professional practitioners, who are adequately equipped to work in a broad range of settings and contexts.

As a Deakin psychology student, you will have flexible study options and the ability to gain hands-on industry experience, preparing you for employment in the real world. Our courses are informed by advisory boards, which ensure the curriculum we deliver produces graduates who are suited to the jobs they will undertake.

Each of the psychology courses offered at Deakin meet the requirements of the Psychology Board of Australia and the Australian Psychological Society (APS).

This booklet will outline the undergraduate courses we offer in psychology, their key features and the career opportunities you can expect from completing a psychology degree at Deakin.

Choosing a university course is an important decision – and we are here to help. We encourage you to gather as much information as possible to help you make an informed decision about which course is best for you.

If you need more information, please contact us on 1300 DEGREE (1300 334 733), email [enquire@deakin.edu.au](mailto:enquire@deakin.edu.au) or visit [deakin.edu.au](http://deakin.edu.au).

We look forward to seeing you at Deakin!

*The Deakin team*



# CONTENTS

|    |                               |
|----|-------------------------------|
| 2  | Psychology at Deakin          |
| 4  | Where do our graduates go?    |
| 4  | Pathways to full registration |
| 5  | Courses and ATARs             |
| 6  | Courses                       |
| 16 | Entry options                 |
| 18 | How to apply                  |
| 20 | Find out more                 |
| 21 | Important dates 2013          |



## Using this booklet

This booklet provides you with detailed information about Deakin's undergraduate courses in psychology (for domestic students), including study areas, career opportunities, course overviews and course structures. It is designed to be read in conjunction with the *2014 Undergraduate Course Guide*, which gives an overview of all of Deakin's undergraduate courses, study options, support services and campuses.

Deakin University also produces course guides specifically for international students. To request a copy phone Deakin International on +61 3 9627 4877 or email [deakin-international@deakin.edu.au](mailto:deakin-international@deakin.edu.au).

## Applying to Deakin is easy

You can apply for most of Deakin's undergraduate courses (bachelor's degrees) commencing in Trimester 1 through the Victorian Tertiary Admissions Centre (VTAC).<sup>\*</sup> We also offer courses commencing at other times of the year, for example Trimester 2 (commencing in August) and Trimester 3 (commencing in November), that require a direct application to Deakin. Whether you are a current Year 12, TAFE, private provider or mature-age student, currently studying at another university, in the workforce, taking a gap year or a graduate, visit [www.vtac.edu.au](http://www.vtac.edu.au) or [deakin.edu.au/study-at-deakin](http://deakin.edu.au/study-at-deakin) for details.

<sup>\*</sup> Some courses commencing in Trimester 1 require direct application to Deakin. Please check the course entry requirements carefully.

## Find out more

If you need more information, please phone 1300 DEGREE (1300 334 733), email [enquire@deakin.edu.au](mailto:enquire@deakin.edu.au) or visit [deakin.edu.au](http://deakin.edu.au).

You can also connect with us on social media, order other publications and visit us. Turn to page 20 for more information.

# PSYCHOLOGY AT DEAKIN

## As a graduate, you will have vast employment opportunities

Studying psychology at Deakin gives you entry into one of the fastest growing and most diverse professional fields in Australia and around the world. Whether you complete a basic degree in psychology or go on to postgraduate study, you will develop the knowledge and skills that make you highly employable across an array of stimulating employment settings. These include, but are not limited to, mental health, neuroscience, human services, public health, criminal justice, human resources management, organisational development, public relations, education and child development.

## We offer flexible study options

In addition to traditional face-to-face teaching (located learning), all undergraduate psychology subjects are taught in online/off-campus mode, and can be taken as part of a full-time or part-time degree. You can take advantage of this flexibility to study psychology when, where, and how you like, and fit your study in with your work and personal commitments.

## You can fast-track your degree

Undergraduate psychology is taught across each of Deakin's trimesters. By taking advantage of the subjects offered in Trimester 3, you can fast-track your studies to complete a three-year degree in psychology in just two years of full-time study, meaning you can gain registration and start your career sooner.

## You will be ready for the workforce

Work readiness is a key feature of psychology at Deakin. As an undergraduate psychology student you have the opportunity to undertake relevant work experience in psychology and participate in transition-to-work activities such as developing a professional portfolio, writing a resume and interviewing skills.

## Our courses are industry-relevant

Deakin's School of Psychology has strong partnerships with industry, involving collaborative activities with government agencies, public and private organisations, hospitals and other universities. These partnerships ensure that our courses remain relevant to industry and workforce needs.

## Learn from experienced and enthusiastic staff

Our lecturers are well qualified, enthusiastic teachers and researchers with broad local and international links and experiences. You will learn from academic staff who are internationally recognised researchers with specialist skills developed through their work with outside agencies, their research and community involvement. This experience reflects and informs our teaching programs.

## Our courses are professionally recognised

All of Deakin's undergraduate and postgraduate psychology courses are accredited by the Australian Psychology Accreditation Council (APAC) and are recognised for the purposes of registration by the Psychology Board of Australia. This high level of accreditation translates into excellent job and career opportunities for Deakin psychology graduates.

## You can study where you want to live

Deakin offers psychology courses across all campuses; the Melbourne Burwood Campus, the Geelong Waterfront Campus, the Geelong Waurn Ponds Campus and the Warrnambool Campus, as well as providing off-campus study options.

Commencing in 2013, the School of Psychology will also offer students the opportunity to complete a Bachelor of Applied Science (Psychology)<sup>^</sup> in a supported community environment – at the Deakin Learning Hub in Dandenong and the Deakin Learning Hub in Craigieburn.

<sup>^</sup> From 2014, this course may be renamed the Bachelor of Psychological Science (subject to approval).

## We offer a range of scholarships

Deakin University offers scholarships for academic excellence, access and equity, accommodation and Aboriginal and Torres Strait Islanders, ensuring higher education is accessible for all members of the community. For more information on scholarships, please visit [deakin.edu.au/scholarships](http://deakin.edu.au/scholarships).

Scholarships are also available through the Nursing and Allied Health Scholarship and Support Scheme (NAHSSS). For more information about this scheme please contact Services for Australian Rural and Remote Allied Health by email [sarrah@sarrah.org.au](mailto:sarrah@sarrah.org.au) or visit [www.sarrah.org.au](http://www.sarrah.org.au).

## Experience the world while you study

Give your degree a competitive edge with a Deakin Study Abroad Program. The Study Abroad and Exchange Office offers various programs including exchange, study abroad, short-term study programs, study tours and international volunteering opportunities, which allow you to study overseas for a few weeks, a trimester, or a year as part of your Deakin degree.

For more information on study abroad, please visit [deakin.edu.au/current-students/student-exchange/exchange](http://deakin.edu.au/current-students/student-exchange/exchange).

## DID YOU KNOW?

Depending on experience and chosen work area, the median starting salary for graduates of undergraduate psychology courses is approximately \$47 500, and the median starting salary for graduates of master's-level psychology courses is approximately \$70 000.\*

\* Source: Graduate Careers Australia, [www.graduatecareers.com.au](http://www.graduatecareers.com.au).

## We offer fourth-year psychology programs

Following successful completion of an undergraduate degree in psychology, students may complete an approved 'fourth year' of study in psychology (either the Graduate Diploma of Psychology or honours in psychology) in order to seek provisional registration with the Psychology Board of Australia and associate membership of the Australian Psychological Society (APS).

Honours is a specialised year of study that allows you to draw together the theory and practical skills gained in previous undergraduate studies and develop an in-depth knowledge of your particular discipline through research, additional coursework and training in research techniques.

We offer the following honours in psychology programs:

- Bachelor of Applied Science (Psychology) (Honours)<sup>^</sup>
- Bachelor of Arts (Psychology) (Honours)
- Bachelor of Health Science (Honours)\*.

These three courses are identical in content. The particular course of enrolment is determined by the bachelor's degree completed. For more information on honours degrees, please visit [deakin.edu.au/honours](http://deakin.edu.au/honours).

The honours and graduate diploma courses both offer students a combination of coursework and research units.

In the honours program, the research component is normally completed as part of an individual research project; whereas in the Graduate Diploma of Psychology, research normally takes the form of a group project, where each group member submits an individual report.

<sup>^</sup> From 2014, this course may be renamed the Bachelor of Psychological Science (Honours) (subject to approval).

\* This honours program is available to those who have completed a 10-credit-point psychology major sequence within the Bachelor of Health Sciences.

## Research at Deakin makes a difference

The School of Psychology's teaching is underpinned by excellence in research across a range of fields, including cognitive and behavioural neuroscience, social psychology, developmental psychology, forensic psychology, organisational psychology and clinical psychology. In particular, research reflects clinical, health and forensic issues; industrial and organisational psychology; human factors; and quality of life.

The School of Psychology offers research in the following areas:

- adolescent health
- body image and disordered eating
- clinical, health and forensic psychology
- drugs and alcohol
- eye-witness testimony
- healthy ageing and depression among older people
- autism and cognitive neurosciences
- human sexuality
- organisational psychology in health care settings
- quality of life
- relationships
- risk behaviours
- social and mental health
- treatment of offenders.

For a comprehensive list of supervisors and their research interests, please visit [deakin.edu.au/health/research/supervision](http://deakin.edu.au/health/research/supervision).

## We offer postgraduate opportunities

Following completion of an approved four-year sequence of academic study in psychology, you may wish to undertake postgraduate studies in psychology in your pursuit of full registration. Deakin's School of Psychology offers two master's courses: Master of Psychology (Industrial and Organisational) and Master of Psychology (Clinical); and three doctorates: Doctor of Psychology (Clinical), Doctor of Psychology (Health) and Doctor of Psychology (Forensic). Alternatively, you may decide to undertake a research degree such as a research master's or Doctor of Philosophy (PhD).

## AN ELITE ATHLETE FRIENDLY UNIVERSITY

As a member of the Elite Athlete Friendly University (EAFU) Network, Deakin is dedicated to supporting elite athletes in their quest to achieve academic success alongside the demands of training and competition.

We enable recognised elite athlete students to negotiate assessment deadlines, lecture and tutorial attendance and study loads to integrate with sporting commitments. Student athletes may also be able to take several leaves of absence in order to meet sporting commitments and extend the amount of time normally allowed to complete a course.

For more information, please visit [deakin.edu.au/future-students/why-deakin/eafu](http://deakin.edu.au/future-students/why-deakin/eafu).

# WHERE DO OUR GRADUATES GO?

After completing an undergraduate psychology degree you may seek employment or undertake further studies in the pursuit of full registration. Qualified psychologists can work in a variety of settings including clinical, forensic, organisational, educational, health, rehabilitation, sport, and many other specialist areas. The contexts in which you can work are just as varied, including private practice, hospitals, business organisations, schools, universities, government agencies, community sport and various research groups.

Recent Deakin psychology graduates have been employed by a range of organisations including, but not limited to, the following:

- Alzheimer's Australia
- Australian Unity
- Barwon Health
- Bellarine Psychology
- Box Hill Hospital
- Cancer Council
- Centre for Behavioural Research in Cancer
- Centrelink
- Clinical Services, Corrections Victoria
- CRS Australia
- Department of Education
- Department of Human Services
- Department of Justice
- Geelong Football Club
- Inner East Mental Health Services Association
- Monash IVF
- Olympic Park Sports Medicine Centre
- People at Work
- Private schools
- Specialised children's services
- Youth Substance Abuse Service.

## PATHWAYS TO FULL REGISTRATION

The current requirements for registration as a provisional psychologist include the completion of four years of academic study of psychology that is recognised by the Psychology Board of Australia. The academic program usually consists of an approved three-year undergraduate psychology sequence – such as Deakin's Bachelor of Applied Science (Psychology)<sup>^</sup>, Bachelor of Arts (Psychology) or Bachelor of Health Sciences (major sequence in psychology) – followed by an approved fourth year of study (such as Deakin's Graduate Diploma of Psychology or honours in psychology).

Following successful completion of an approved fourth year of psychology study, you may apply for provisional registration with the Psychology Board of Australia and associate membership of the Australian Psychological Society (APS). Deakin's Bachelor of Psychology can lead directly to provisional registration provided the honours year is completed within this four-year course.

In order to gain full registration, provisional psychologists must then complete either two years of supervised practice, or a minimum two years of further study, which may include a Master of Psychology, Doctor of Psychology or a Doctor of Philosophy (PhD) (with supervised practice completed outside the degree). It is at this stage that you can specialise in a particular area of psychology that appeals to your interests and career aspirations.

Deakin offers psychology courses for every stage of your pathway to registration.

<sup>^</sup> From 2014, this course may be renamed the Bachelor of Psychological Science (subject to approval).



# COURSES AND ATARS

|   | Melbourne Burwood<br>Campus<br>Clearly-in ATAR 2013 | Geelong<br>campuses<br>Clearly-in ATAR 2013 | Warrnambool<br>Campus<br>Clearly-in ATAR 2013 | Off campus<br>Available | Page |
|---|---|---|---|-------------------------|------|
| <i>Bachelor of ...</i>  |   |   |   |                         |      |
| Applied Science (Psychology)*   H344                          | 60.45   | 60.35                                       | N/A   | Yes                     | 6    |
| Applied Science (Psychology)^<br>in Craigieburn   H344C **    |   |   |   | Yes                     | 7    |
| Applied Science (Psychology)^<br>in Dandenong   H344D **      |   |   |   | Yes                     | 8    |
| Psychology   H345   | 80.10   | 73.60                                       | N/A   |                         | 8    |
| Arts (Psychology)   A301                                      | 73.35   | 58.85                                       | N/A   | Yes                     | 10   |
| Health Sciences   H300<br><i>major sequence in psychology</i> | 71.60   | 51.00                                       | 56.55   |                         | 11   |
| <b>Combined courses</b>                                       |   |   |   |                         |      |
| <i>Bachelor of ... / Bachelor of ...</i>                      |   |   |   |                         |      |
| Nursing/<br>Applied Science (Psychology)**   D387             | 79.00   | 71.20                                       | N/A   |                         | 13   |
| Health Sciences/Arts   D391                                   | 74.20   |   |   |                         | 14   |

Geelong campuses = Geelong Warrnambool Campus and Geelong Waterfront Campus.

N/A = Not available or not applicable. The course is offered at this campus. Where no ATAR is available it may mean that other admission requirements apply.

Please refer to the course entry for more information.

\*\* Applicants must apply directly to Deakin University. Refer to pages 7 and 8 for more information.

^ From 2014, this course may be renamed the Bachelor of Psychological Science (subject to approval).

^^ From 2014, this course may be renamed the Bachelor of Nursing/Bachelor of Psychological Science (subject to approval).

If a clearly-in ATAR is not listed it means that the course is not available at that campus.

For more information on ATARs please visit [deakin.edu.au/future-students/year12](http://deakin.edu.au/future-students/year12).

Psychology is a scientific discipline, which studies the mind and its processes, behaviour and mental states.



# COURSES



## CLAIRE JOSEPH

### BACHELOR OF APPLIED SCIENCE (PSYCHOLOGY)\* MELBOURNE BURWOOD CAMPUS

'I chose this field because I believe children are "our" future and thus wanted to work with them. I have always had an interest in the way people think, why they act the way they do and what can be done to prevent some of the atrocities we are increasingly witnessing. As such, I decided to combine my love for children and my love for psychology into the goal of becoming a doctor in child psychology.

I chose to study at Deakin because it is renowned for its psychology courses with some of the best psychologists and psychology lecturers out there. Everyone was extremely friendly and helpful when I was enquiring so I felt "at home" before I had even started my course.

At uni I've had the opportunity to complete a psychology internship (it is very rare that a university offers an internship in psychology, especially to students completing a bachelor's degree). I've had the honour of working with world class lecturers and tutors and have been exposed to many different opportunities.'

\* From 2014, this course may be renamed the Bachelor of Psychological Science (subject to approval).

## BACHELOR OF APPLIED SCIENCE (PSYCHOLOGY)\* 3 B G W X

| DEAKIN CODE   | ATAR   | INDICATIVE FIRST YEAR FEE  |
|---|--|--|
| H344  | <span>B</span> 60.45<br><span>G</span> 60.35<br><span>W</span> N/A<br><span>X</span> N/A | \$6750 (CSP) <sup>1</sup>  |
| YEAR 12 PREREQUISITES   |  | NON-YEAR 12 REQUIREMENTS   |
| VCE units 3 and 4 – a study score of at least 30 in English (ESL) or 25 in any other English. |  | VTAC Personal History online.<br>Some applicants only: STAT Multiple Choice. |

Psychology is concerned with understanding human personality, behaviour, emotion, underlying mental processes and the factors which lead people to differ in the way they think and behave. Throughout this course you will be exposed to an integrated approach to psychology, which covers areas including behavioural and clinical neuroscience, child and adolescent psychology, relationships and the psychology of groups, personality, cognitive psychology, forensic psychology and psychopathology. You will also be given the opportunity to undertake an internship in psychology as well as develop your counselling skills through a suite of elective units offered by the School of Psychology.

Following successful completion of this degree, graduates may apply for a fourth-year of psychology study (including Deakin's Graduate Diploma of Psychology or honours in psychology).

### Professional recognition

Deakin's Bachelor of Applied Science (Psychology)\* is recognised for registration purposes by the Psychology Board of Australia, accredited by the Australian Psychology Accreditation Council (APAC) and enables you to undertake additional study in pursuit of professional registration.

### Pathways to registration

Please refer to page 4 for information on pathways to full registration.

### Career opportunities

As a graduate of this course you will have developed the knowledge and skills that make you highly employable across an array of stimulating employment settings.

Many psychology graduates work in schools and education settings, or in a variety of businesses, delivering employee assistance programs or training. Increasingly, opportunities are available in commerce and in areas such as human resources, business and management.



## Course structure

You must complete 24 credit points of study, including at least 12 psychology units.

### Level 1

HBS107 Understanding Health  
 HBS108 Health Information and Data  
 HBS110 Health Behaviour  
 HPS111 Introduction to Psychology A  
 HPS121 Introduction to Psychology B  
*plus three elective units*

### Level 2

HPS201 Research Methods in Psychology A  
 HPS202 Child and Adolescent Development  
 HPS203 Understanding the Mind  
 HPS204 Introduction to Social Psychology  
 HPS205 Behavioural Neuroscience  
*plus three elective units*

### Level 3

HPS301 Research Methods in Psychology B  
 HPS307 Personality  
 HPS308 Psychopathology  
*plus five elective units*

### Elective units

*Two of the 11 elective units must be chosen from the list below:*

HPS302 Pathways Through Adulthood  
 HPS303 Cognition and Behaviour  
 HPS304 The Social Psychology of Relationships  
 HPS395 Clinical Neuroscience

*The remaining nine elective units may include other psychology units such as:*

HPS206 Psychology in the Criminal Justice System  
 HPY201 Psychology Internship  
 HPY210 Coaching and Counselling Individuals for Behaviour Change  
 HPY310 Coaching and Counselling Groups for Behaviour Change

^ From 2014, this course may be renamed the Bachelor of Psychological Science (subject to approval).

N/A Refer to page 5.

For more information and to click through to unit descriptions, please visit [deakin.edu.au/courses](http://deakin.edu.au/courses).

## BACHELOR OF APPLIED SCIENCE (PSYCHOLOGY)^ IN CRAIGIEBURN **3** **X**

| DEAKIN CODE  | ATAR         | INDICATIVE FIRST YEAR FEE                                |
|--|--------------|--|
| H344C  | <b>X</b> N/A | \$6750 (CSP)^  |
| YEAR 12 PREREQUISITES  |              | NON-YEAR 12 REQUIREMENTS                                 |
| VCE units 3 and 4 – a study score of at least 30 in English (ESL) or 25 in any other English. Minimum ATAR of 50. Application form and personal statement. See note below. |              | Application form and personal statement. See note below. |

Commencing in 2013, Deakin offers students a psychology degree in a supported community environment – the Deakin Learning Hub in Craigieburn. This newly developed community learning facility provides a support service and resource centre to ensure you receive the assistance you need throughout your studies.

This exciting initiative provides you with the flexibility to complete a Bachelor of Applied Science (Psychology)^ off campus, while having access to academic staff in Craigieburn who will offer support, guidance and advice throughout your studies.

Take advantage of this flexible degree and the unique support available at the Deakin Learning Hub to make the most of your studies and build your degree towards the exciting and diverse career opportunities that exist in the psychology industry.

### Pathways to registration

Following successful completion of the Bachelor of Applied Science (Psychology)^ plus either a Graduate Diploma of Psychology or honours in psychology, you may apply for provisional registration with the Psychology Board of Australia and associate membership of the Australian Psychological Society (APS).

For more details about pathways to registration, please refer to page 4.

### Career opportunities

Whether you complete an undergraduate degree in psychology or go on to postgraduate study, you will have developed the knowledge and skills that make you highly employable across an array of stimulating employment settings.

Many psychologists work in schools and education settings, or in a variety of businesses, delivering employee assistance programs or training. Increasingly, opportunities are available in commerce and in areas such as human resources, business and management.

### Course structure

Please refer to the course structure for the Bachelor of Applied Science (Psychology)^ on pages 6–7.

C = Deakin Learning Hub in Craigieburn.

^ From 2014, this course may be renamed the Bachelor of Psychological Science (subject to approval).

N/A Refer to page 5.

NOTE: All applicants must apply directly to Deakin University using the approved application form. For more information (including application closing dates) and to apply, please visit [deakin.edu.au/study-at-deakin/study-options-and-pathways/pathways-to-deakin/bachelor-of-applied-science-psychology](http://deakin.edu.au/study-at-deakin/study-options-and-pathways/pathways-to-deakin/bachelor-of-applied-science-psychology).

# COURSES

## BACHELOR OF APPLIED SCIENCE (PSYCHOLOGY)^ IN DANDENONG 3 X

| DEAKIN CODE  | ATAR               | INDICATIVE FIRST YEAR FEE                                |
|--|--------------------|--|
| H344D  | <span>X</span> N/A | \$6750 (CSP) <sup>1</sup>                                |
| YEAR 12 PREREQUISITES  |                    | NON-YEAR 12 REQUIREMENTS                                 |
| VCE units 3 and 4 – a study score of at least 30 in English (ESL) or 25 in any other English. Minimum ATAR of 50. Application form and personal statement. See note below. |                    | Application form and personal statement. See note below. |

Commencing in 2013, Deakin offers students the opportunity to complete the Bachelor of Applied Science (Psychology)^ in a supported community environment – the Deakin Learning Hub in Dandenong. This newly developed community learning facility provides a support service and resource centre to ensure you receive the assistance you need throughout your studies.

This exciting initiative provides you with the opportunity to complete the course off campus, while having access to academic staff in Dandenong who will offer support, guidance and advice throughout your studies.

Take advantage of the unique support available at the Deakin Learning Hub to make the most of your studies and build your degree towards the exciting and diverse career opportunities that exist in the field of psychology.

Following successful completion of this degree, graduates may apply for a fourth-year of psychology study (including Deakin's Graduate Diploma of Psychology or honours in psychology).

### Pathways to registration

Following successful completion of the Bachelor of Applied Science (Psychology)^ plus either a Graduate Diploma of Psychology or honours in psychology, you may apply for provisional registration with the Psychology Board of Australia and associate membership of the Australian Psychological Society (APS).

For more details about pathways to registration, please refer to page 4.

### Career opportunities

As a graduate of this course you will have developed the knowledge and skills that make you highly employable across an array of stimulating employment settings.

Many psychology graduates work in schools and education settings, or in a variety of businesses, delivering employee assistance programs or training. Increasingly, opportunities are available in commerce and in areas such as human resources, business and management.

### Course structure

Please refer to the course structure for the Bachelor of Applied Science (Psychology)^ on pages 6–7.

D = Deakin Learning Hub in Dandenong.

^ From 2014, this course may be renamed the Bachelor of Psychological Science (subject to approval).

N/A Refer to page 5.

NOTE: All applicants must apply directly to Deakin University using the approved application form. For more information (including application closing dates) and to apply, please visit [deakin.edu.au/dandenong](http://deakin.edu.au/dandenong).

### RELATED COURSE

- Bachelor of Health Sciences in Dandenong

Please refer to the *2014 Undergraduate Health Career Booklet* for more information.

## BACHELOR OF PSYCHOLOGY 4 B G W

| DEAKIN CODE   | ATAR   | INDICATIVE FIRST YEAR FEE   |
|---|--|---|
| H345  | <span>B</span> 80.10<br><span>G</span> 73.60<br><span>W</span> N/A | \$6920 (CSP) <sup>1</sup>   |
| YEAR 12 PREREQUISITES   |  | NON-YEAR 12 REQUIREMENTS  |
| VCE units 3 and 4 – a study score of at least 30 in English (ESL) or 25 in any other English. |  | VTAC Personal History online. Some applicants only: STAT Multiple Choice. |

Psychology is concerned with understanding human personality, behaviour, emotion, underlying mental processes and the factors that lead people to differ in the way they think and behave. Throughout this course you will be exposed to an integrated approach to psychology, which covers areas including behavioural and clinical neuroscience, child and adolescent psychology, relationships and the psychology of groups, personality, cognitive psychology, forensic psychology and psychopathology. You will also be given the opportunity to undertake an internship in psychology as well as develop your counselling skills through a suite of elective units offered by the School of Psychology.

Unlike the Bachelor of Applied Science (Psychology)^ or Bachelor of Arts (Psychology), this four-year course provides selected students with the opportunity to complete honours in psychology as part of the final year of this degree. Selection into honours is subject to academic achievement in the first three years of study.

### Professional recognition

Deakin's Bachelor of Psychology is recognised for registration purposes by the Psychology Board of Australia and is accredited by the Australian Psychology Accreditation Council (APAC).

### Pathways to registration

Please refer to page 4 for information on pathways to full registration.

### Career opportunities

After successfully completing the Bachelor of Psychology you will be well prepared for employment in a wide range of areas relevant to human wellbeing, such as social work, youth work, careers counselling, work/life counselling, developmental psychology, research psychology, or mental health rehabilitation.

Depending on your chosen area and level of further study, you will be able to work in a variety of settings, including specialist areas of psychology practice, such as clinical, forensic, organisational, educational, health, sport and many others. The contexts in which you work may include hospitals, business organisations, schools, universities, government agencies, community sporting groups, various research groups or in private practice.

## Course structure

You must complete 32 credit points of study, including a minimum of 20 credit points of psychology units.

### Level 1

HBS107 Understanding Health  
 HBS108 Health Information and Data  
 HBS110 Health Behaviour  
 HPS111 Introduction to Psychology A  
 HPS121 Introduction to Psychology B  
*plus three elective units*

### Level 2

HPS201 Research Methods in Psychology A  
 HPS202 Child and Adolescent Development  
 HPS203 Understanding the Mind  
 HPS204 Introduction to Social Psychology  
 HPS205 Behavioural Neuroscience  
*plus three elective units*

### Level 3

HPS301 Research Methods in Psychology B  
 HPS307 Personality  
 HPS308 Psychopathology  
*plus five elective units*

### Elective units

*Two of the 11 elective units must be chosen from the list below:*

HPS302 Pathways Through Adulthood  
 HPS303 Cognition and Behaviour  
 HPS304 The Social Psychology of Relationships  
 HPS395 Clinical Neuroscience

*The remaining nine elective units may be chosen from the psychology units listed below, or undertaken from any area of the University (subject to availability and timetabling):*

HPS206 Psychology in the Criminal Justice System  
 HPY201 Psychology Internship  
 HPY210 Coaching and Counselling Individuals for Behaviour Change  
 HPY310 Coaching and Counselling Groups for Behaviour Change

### Honours units

#### Level 4

HPS425 Honours in Psychology Part A (2 credit points)  
 HPS426 Honours in Psychology Part B (2 credit points)  
 HPS427 Honours in Psychology Part C (2 credit points)  
 HPS428 Honours in Psychology Part D (2 credit points)

^ From 2014, this course may be renamed the Bachelor of Psychological Science (subject to approval).

N/A Refer to page 5.



## MARIEL MESSER

BACHELOR OF PSYCHOLOGY  
 GEELONG WATERFRONT CAMPUS

'I've thoroughly enjoyed learning about psychological disorders and how these relate to brain structure and function. I have further enjoyed learning about health-related concepts, such as recognising the fundamental stages of grief. In the future, I would like to work in the trauma department of hospitals providing psychological assistance to patients and their families. Acquiring specific knowledge in the psychological field has therefore helped to make this career achievable.

Honours has been the most challenging but rewarding year to date. I am currently working with Dr Peter Miller on a project examining the predictors of alcohol consumption and aggression in the night time economy, with particular focus on gender norm conformity. The aim of my proposal is to identify various interventions that may prevent alcohol-related aggression in regional Geelong.

I would definitely recommend the Bachelor of Psychology to others considering studying at Deakin. The range of subjects, quality of teaching and facilities are of an exceptionally high standard. As a result, Deakin ensures you are equipped to undertake postgraduate studies if you wish to do so.'

» Read more about Mariel's experience at [deakin.is/mariel-messer](https://deakin.is/mariel-messer).

# COURSES

## BACHELOR OF ARTS (PSYCHOLOGY) 3 B G W X

| DEAKIN CODE   | ATAR   | INDICATIVE FIRST YEAR FEE                               |
|---|--|---|
| A301  | <span>B</span> 73.35<br><span>G</span> 58.85<br><span>W</span> N/A<br><span>X</span> N/A | \$5870 (CSP) <sup>1</sup>                               |
| YEAR 12 PREREQUISITES   |  | NON-YEAR 12 REQUIREMENTS                                |
| VCE units 3 and 4 – a study score of at least 25 in English (ESL) or 20 in any other English. |  | VTAC Personal History online, academic results and GPA. |

The Bachelor of Arts (Psychology) combines research-based and professional studies in psychology with broad studies in the liberal and creative arts. It provides you with opportunities to develop skills of critical and systematic thinking; an imaginative understanding and appreciation of the theory and practice of the social sciences, the humanities or the arts; and enhanced cultural sensitivity and understanding through genuine reciprocity of values.

The course develops capabilities inherent in interpreting sources of knowledge, and develops the capacity for quantitative and qualitative analysis, and the capacity for critique and creative thinking in various arts disciplines. At the same time, you will develop an understanding of psychology as a scientific discipline and appreciate the role it plays within society as a whole.

Following successful completion of this degree, graduates may apply for a fourth year of psychology study (including Deakin's Graduate Diploma of Psychology or honours in psychology).

### Professional recognition

Deakin's Bachelor of Arts with a 10-credit-point major sequence in psychology is recognised for registration purposes by the Psychology Board of Australia.

### Pathways to registration

Please refer to page 4 for information on pathways to full registration.

### Career opportunities

As a graduate, you will be well placed to enter a variety of employment fields including psychology, human resources, education, law enforcement, media and communication, photography, politics and policy studies, history, languages and visual arts. The broad range of major sequence options ensures graduates have the opportunity to gain qualifications in a number of areas.

### Course structure

You must complete 24 credit points of study comprising the approved 10-credit-point psychology major sequence, 10 credit points of arts units (including an approved arts major sequence of at least 8 credit points) and four elective units, which may be taken from any area of the University (subject to availability and timetabling).

For more information and to click through to unit descriptions, please visit [deakin.edu.au/courses](http://deakin.edu.au/courses).

### Core units

#### Level 1

HPS111 Introduction to Psychology A  
HPS121 Introduction to Psychology B

#### Level 2

HPS201 Research Methods in Psychology A  
HPS202 Child and Adolescent Development  
HPS203 Understanding the Mind  
HPS204 Introduction to Social Psychology  
HPS205 Behavioural Neuroscience

#### Level 3

HPS301 Research Methods in Psychology B  
HPS307 Personality  
HPS308 Psychopathology

### Major sequences

- Animation B
- Anthropology G X
- Arabic B G X
- Australian studies B G W X
- Children's literature B G W X
- Chinese B G
- Criminology G X
- Dance B <sup>\*\*</sup>
- Drama B
- Film studies B
- History B G X
- Indonesian B G X
- International relations B G X
- Journalism B G W X
- Language and culture studies B G X <sup>\*</sup>
- Literary studies B G X
- Media and communication B G W X
- Middle East studies B G X
- Philosophy B G X
- Photography B
- Politics and policy studies B G W X
- Professional and creative writing B G
- Public relations G W <sup>#</sup> X
- Sociology B G W X
- Visual arts B W

<sup>\*</sup> A full major sequence in Chinese is not available at this campus.

<sup>\*\*</sup> Dance major sequence offered to Bachelor of Teaching (Secondary)/Bachelor of Arts (D347) students and students enrolled in Bachelor of Creative Arts courses only from 2013.

<sup>#</sup> A full major sequence is not available at this campus.

For more information about these major sequences, please refer to the *2014 Arts, Humanities and Social Sciences Career Booklet*.

N/A Refer to page 5.



## BACHELOR OF HEALTH SCIENCES – MAJOR SEQUENCE IN PSYCHOLOGY **3 B G W**

| DEAKIN CODE   | ATAR   | INDICATIVE FIRST YEAR FEE  |
|---|--|--|
| H300  | <b>B</b> 71.60<br><b>G</b> 51.00<br><b>W</b> 56.55 | \$7640 (CSP) <sup>1</sup>  |
| YEAR 12 PREREQUISITES   |  | NON-YEAR 12 REQUIREMENTS   |
| VCE units 3 and 4 – a study score of at least 30 in English (ESL) or 25 in any other English. |  | VTAC Personal History online.<br>Some applicants only: STAT Multiple Choice. |

This flexible degree is ideal if you are interested in a career in health but aren't sure which direction to take. It equips you with the specialist knowledge and transferable skills that will make you highly sought-after for employment in a variety of valuable settings within the health sector.

While concentrating your studies on two or more specialised health-related areas you can explore complementary study areas that appeal to your interests and career aspirations, and diversify your employment opportunities by undertaking elective units from any area of the University (subject to availability and timetabling).

Depending on the major sequences and electives you choose, you may have the opportunity to undertake an industry placement unit to consolidate your knowledge and enhance your employment prospects.

Following successful completion of this degree, graduates may apply for a fourth year of psychology study (including Deakin's Graduate Diploma of Psychology or honours in psychology).

### Professional recognition

Deakin's Bachelor of Health Sciences with a 10-credit-point major sequence in psychology is recognised for registration purposes by the Psychology Board of Australia.

### Pathways to registration

Please refer to page 4 for information on pathways to full registration.

### Career opportunities

Career opportunities for Bachelor of Health Science graduates are diverse, and depend on the major sequences and electives chosen. Depending on the study areas you choose, you may qualify to work in areas such as health promotion, health education, community health, project management, program planning, case management, counselling, family and community support, housing services, regional health service planning, sports psychology, sports nutrition and sports development.

### Work-Integrated Learning

You can enhance your employment prospects and consolidate your knowledge and skills through an industry placement unit. Depending on the major sequences you choose to study, this option may be available as an elective unit in the final year of the course.

### Course structure

You must complete 24 credit points of study, including at least 16 credit points from the Faculty of Health. Within these 16 credit points you must complete two core units, which provide you with the opportunity to engage in multidisciplinary learning, and two major sequences chosen from the list below.

### Core units

HBS107 Understanding Health  
HBS108 Health Information and Data

### Major sequences

- Environmental health **B**
- Exercise science **B X**
- Family, society and health **B X**
- Food studies **B**
- Health and sustainability **B**
- Health promotion **B G W X**
- Medical biotechnology **G**
- Nutrition **B G W**
- People, society and disability **B X**
- Physical activity and health **B G W**
- Psychology **B G W X**
- Sport coaching **B**

For more information about these major sequences, please refer to the *2014 Undergraduate Health Career Booklet*.

> Continued on next page ...

As a Deakin student, you will learn in a friendly and supportive environment.



# COURSES



## ASSOCIATE PROFESSOR ALEXANDER MUSSAP

DEPUTY HEAD OF SCHOOL  
(DIRECTOR OF TEACHING AND LEARNING)  
SCHOOL OF PSYCHOLOGY  
MELBOURNE BURWOOD CAMPUS

I coordinate the Bachelor of Applied Science (Psychology)\* at undergraduate level, and the honours in psychology courses at fourth-year level. I also supervise numerous honours and postgraduate students (PhD and Doctor of Psychology). I conduct research primarily in the area of health psychology on topics that include body image, culture, religion and gender, and also work in the areas of visual and self perception.

I have been awarded four Australian Research Council Discovery Grants and, in 2009, I was part of a team that won an Australian Learning and Teaching Council Citation for Outstanding Contribution to Student Learning.

Students of psychology are faced with the difficult task of integrating knowledge across diverse theoretical perspectives and research traditions. This can make it difficult to form a coherent understanding of what it means to be "evidence-based" in psychology. The primary motivation behind my efforts and innovations in teaching and learning is to develop in our students a professional identity; one that integrates knowledge and practice in psychology.

^ From 2014, this course may be renamed the Bachelor of Psychological Science (subject to approval).

### PSYCHOLOGY MAJOR SEQUENCE B G W X

This major sequence develops your understanding of a range of topics in psychology, which is the science concerned with unravelling questions about human behaviour and mental processes.

#### 6-credit-point major sequence

This six-unit major sequence is designed to complement other studies within the Bachelor of Health Sciences. It does not meet the requirements for entry into fourth-year studies in psychology, nor does it lead to a professional qualification in psychology.

##### Level 1

HPS111 Introduction to Psychology A  
HPS121 Introduction to Psychology B

##### Level 2

*Select two elective units from the following:*

HPS201 Research Methods in Psychology A  
HPS202 Child and Adolescent Development  
HPS203 Understanding the Mind  
HPS204 Introduction to Social Psychology  
HPS205 Behavioural Neuroscience

##### Level 3

*Select two elective units from the following:*

HPS301 Research Methods in Psychology B  
HPS307 Personality  
HPS308 Psychopathology

#### 10-credit-point major sequence

Students who wish to pursue registration as a psychologist can meet their undergraduate study requirements by taking this ten-unit major sequence. Following successful completion of this major sequence, students may be eligible to apply for a fourth year of study in psychology (either honours in psychology or a Graduate Diploma of Psychology).

##### Level 1

HPS111 Introduction to Psychology A  
HPS121 Introduction to Psychology B

##### Level 2

HPS201 Research Methods in Psychology A  
HPS202 Child and Adolescent Development  
HPS203 Understanding the Mind  
HPS204 Introduction to Social Psychology  
HPS205 Behavioural Neuroscience

##### Level 3

HPS301 Research Methods in Psychology B  
HPS307 Personality  
HPS308 Psychopathology

---

For more information and to click through to unit descriptions,  
please visit [deakin.edu.au/courses](http://deakin.edu.au/courses).

---

## COMBINED COURSES

### BACHELOR OF NURSING/BACHELOR OF APPLIED SCIENCE (PSYCHOLOGY)^ **4 B F W**

| DEAKIN CODE   | ATAR   | INDICATIVE FIRST YEAR FEE  |
|---|--|--|
| D387  | <b>B</b> 79.00<br><b>F</b> 71.20<br><b>W</b> N/A | \$6380 (CSP) <sup>1</sup>  |
| YEAR 12 PREREQUISITES   |  | NON-YEAR 12 REQUIREMENTS   |
| VCE units 3 and 4 – a study score of at least 30 in English (ESL) or 25 in any other English. |  | VTAC Personal History online.<br>Some applicants only: STAT Multiple Choice. |

This course is particularly well suited to those interested in the growing field of mental health nursing. It will prepare you with a strong understanding of research methods in psychology, human behaviour and mental processes, and provide you with the knowledge and skills to comprehensively care for patients.

Throughout the course you will benefit from our purpose-built Clinical Simulation Centre, which provides you with the facilities and equipment required to develop practical nursing skills that are further enhanced through clinical work placements.

In addition, you will study a wide range of subjects that provide the scientific knowledge base for mental health practice such as psychology as a behavioural science, statistics, psychological testing and measurement, mental health promotion and research.

An honours year is available upon completion of this degree.

#### Professional recognition

This course is specifically designed to fulfil the registration requirements for Registered Nurse (Division 1) of the Nursing and Midwifery Board of Australia (NMBA), and provides you with a three-year sequence in psychology that is recognised by the Psychology Board of Australia.

#### Career opportunities

Upon completion of your studies you will be qualified to work in areas such as mental health rehabilitation, youth work, careers counselling, community development and work/life counselling in addition to pursuing roles as a registered nurse in a range of work areas.

#### Pathways to psychology registration

Please refer to page 4 for information on pathways to full psychology registration.

#### Work-Integrated Learning

As part of the Bachelor of Nursing component of this course, work placements are conducted throughout your course beginning in Trimester 1 of your first year. This early exposure to the clinical environment gives you extensive opportunities to develop clinical skills under the supervision of registered nurses and enables you to experience being part of a multidisciplinary health care team. You will gain clinical experience in a variety of settings including acute/sub-acute care, medical and surgical care, aged care, rehabilitation, paediatrics, community nursing and mental health nursing. You will spend approximately 21 weeks in various health care settings, including hospitals and community health centres in metropolitan, rural and regional areas.

#### Clinical placement requirements

In accordance with Department of Human Services policy\*, nursing students are required to undertake a Police Record Check prior to work placements in each calendar year of your course. In accordance with the Working with Children Act 2005\*\*, all students are required to undertake a Working with Children Check at commencement of the course. If you fail to obtain a Police Record Check and/or a Working with Children Check by the date specified each year by the School of Nursing and Midwifery, you will not be able to undertake the required related work placement. You may also be required to declare your immunisation status to satisfy the requirements of health organisations where you will be undertaking your work placement. All expenses associated with the work placement are your responsibility.

\* Department of Human Services Policy on Working with Children Check and Police Record Check can be found at: [www.dhs.vic.gov.au/facs/bdb/fmu/service-agreement/4.departmental-policies-procedures-and-initiatives/4.6-police-record-check-policy-including-working-with-children-check](http://www.dhs.vic.gov.au/facs/bdb/fmu/service-agreement/4.departmental-policies-procedures-and-initiatives/4.6-police-record-check-policy-including-working-with-children-check).

\*\* Department of Justice 2007, Working with Children Act 2005, Victoria, Australia, retrieved 16 June 2008.

#### Course structure

You must complete 32 credit points of study, of which 18 are specific to nursing and 10 are specific to psychology. The remaining 4 credit points are foundation units offered by the Faculty of Health, which provide you with the opportunity to engage in multidisciplinary learning.

##### Level 1

HBS109 Human Structure and Function  
 HNN112 Principles of Nursing Care  
 HNN114 Health Assessment  
 HNN120 The Discipline of Nursing: Contemporary Issues and Trends 1  
 HNN122 Nursing Management and Interventions 1  
 HPS111 Introduction to Psychology A  
 HPS121 Introduction to Psychology B

##### Level 2

HBS107 Understanding Health  
 HBS108 Health Information and Data  
 HBS110 Health Behaviour  
 HNN215 Quality Use of Medicines in Nursing  
 HNN222 Mental Health Nursing  
 HNN227 Nursing Management and Interventions 2

##### Level 3

HNN217 Nursing in Community Settings  
 HNN300 Child and Adolescent Nursing  
 HNN318 Nursing Management of the Older Person  
 HPS201 Research Methods in Psychology A  
 HPS202 Child and Adolescent Development  
 HPS203 Understanding the Mind  
 HPS204 Introduction to Social Psychology  
 HPS205 Behavioural Neuroscience

##### Level 4

HNN301 Mental Health Promotion  
 HNN319 Nursing Management of Chronic Illness  
 HNN320 The Discipline of Nursing: Contemporary Issues and Trends 2  
 HNN325 Comprehensive Nursing Management and Interventions  
 HPS301 Research Methods in Psychology B  
 HPS307 Personality  
 HPS308 Psychopathology

^ From 2014, this course may be renamed the Bachelor of Nursing/Bachelor of Psychological Science (subject to approval).

N/A Refer to page 5.

# COURSES

## BACHELOR OF HEALTH SCIENCES/ BACHELOR OF ARTS 4 B

| DEAKIN CODE   | ATAR  | INDICATIVE FIRST YEAR FEE  |
|---|---|--|
| D391  | <span style="background-color: red; color: white; padding: 0 2px;">B</span> 74.20 | \$6990 (CSP) <sup>1</sup>  |
| YEAR 12 PREREQUISITES   |   | NON-YEAR 12 REQUIREMENTS   |
| VCE units 3 and 4 – a study score of at least 30 in English (ESL) or 25 in any other English. |   | VTAC Personal History online.<br>Some applicants only: STAT Multiple Choice. |

The Bachelor of Health Sciences/Bachelor of Arts is a flexible degree that provides a range of exciting opportunities and equips graduates with the skills needed to work in a variety of valuable settings. It is an excellent option for those looking to discover their passion in health and the arts and also provides a pathway to further professional studies at a postgraduate level.

The course allows you to undertake complementary studies in both these areas while exploring particular areas of interest to you. You choose how to structure your course and could combine, for example; exercise science with dance, politics and policy studies with nutrition, sport coaching with media and communication, food studies with journalism, or sociology with health promotion.

For more information, including major sequences, career opportunities and course structure, please refer to page 11 for the Bachelor of Health Sciences – major sequence in psychology and page 10 for the Bachelor of Arts (Psychology) or visit [deakin.edu.au/study-at-deakin](http://deakin.edu.au/study-at-deakin).

You will also find more information about this course in the *2014 Undergraduate Health Career Booklet* and the *2014 Undergraduate Arts, Humanities and Social Sciences Career Booklet*.

<sup>1</sup> The indicative first year fee is an approximate indication of the cost of this course in the first year of full-time study for a Commonwealth Supported Place. We can't specify the exact figure, because fees are charged per unit, not per course, so the actual fees may vary depending on what units you choose to study.

The fees quoted in this booklet are for Australian students in 2013, and may change for 2014 and later years. You can find more information about fees on our website at [deakin.edu.au](http://deakin.edu.au) or at [studyassist.gov.au](http://studyassist.gov.au). For information on fees for international students, please visit [deakin.edu.au/international](http://deakin.edu.au/international).

## PEER MENTORING PROGRAM

The Faculty of Health runs a Peer Mentoring Program as part of its commitment to providing new students with the best possible transition into university life. By joining the Peer Mentoring Program, first-year students will receive support and guidance from more senior students in their course. The program runs across all campuses and is open to students from all courses offered by the Faculty of Health.

For more information please visit  
[deakin.edu.au/health/peer-mentoring](http://deakin.edu.au/health/peer-mentoring).

For the latest information about new courses at Deakin University, please visit [deakin.edu.au](http://deakin.edu.au).



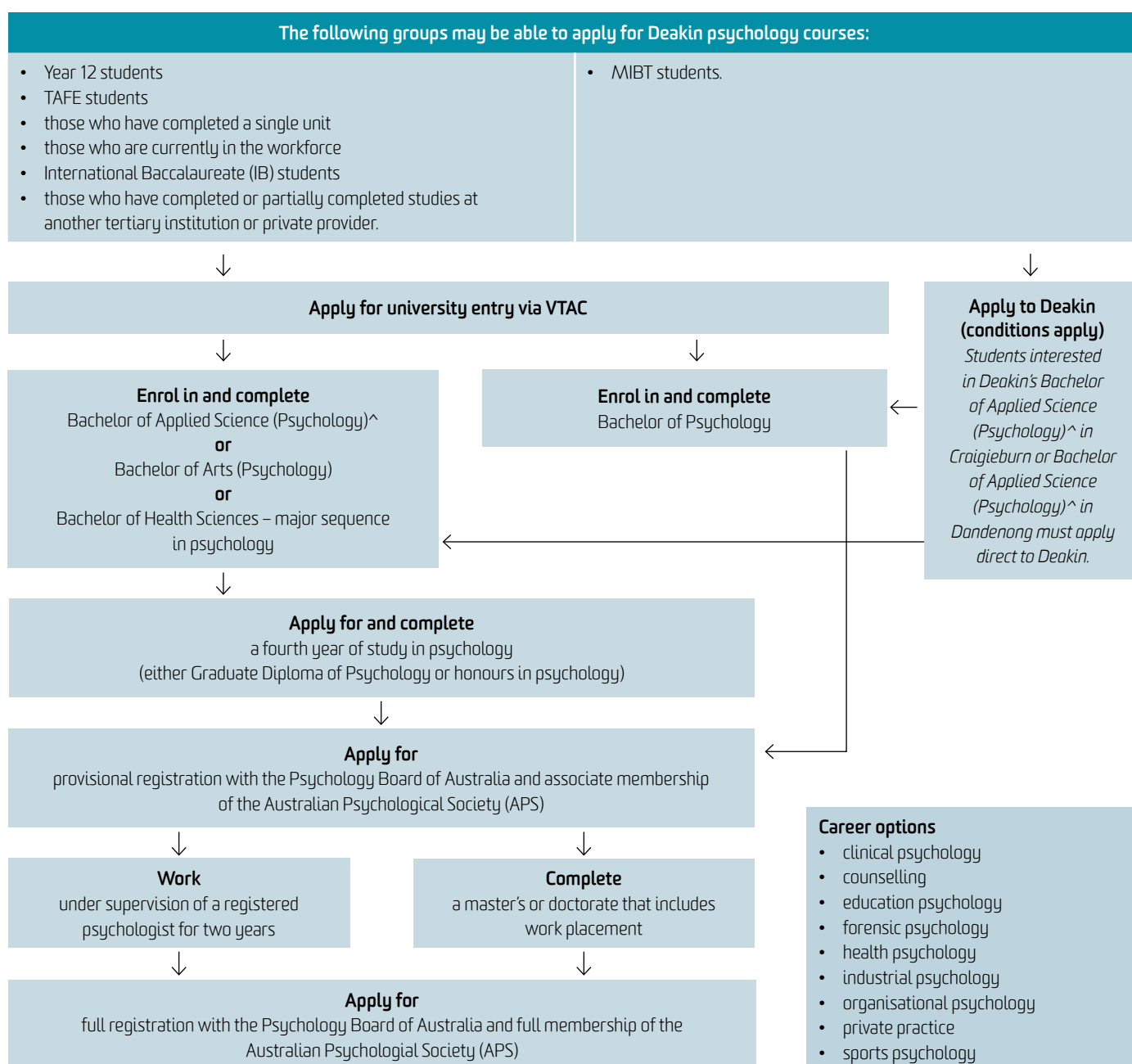
You can access Wi-Fi hotspots on all of our campuses.



# ENTRY OPTIONS

Gaining entry into Deakin is not just for people who have recently completed Year 12. International Baccalaureate (IB) students, TAFE students, people who have completed a single unit(s) of study, those who are currently in the workforce and those who have completed or partially completed studies at another tertiary institution or private provider can also apply to study at Deakin, providing they have met certain criteria. These alternative entry options are referred to as pathway programs and take into consideration previous qualifications or your time in the workforce.

The flowchart below outlines the various groups that can apply for Deakin psychology courses and examples of the options that are available to you on your journey as a student, depending on your chosen course. Some of these groups and options are explained further on page 17.



Please note applicants are subject to entry requirements.

For more examples of pathways into Deakin University, please visit [deakin.edu.au/pathways](http://deakin.edu.au/pathways).

<sup>^</sup> From 2014, this course may be renamed the Bachelor of Psychological Science (subject to approval).

## TAFE pathways

If you have completed a diploma or advanced diploma, you may be eligible for up to 12 credit points towards a related Deakin degree. In most cases, this will reduce the number of units you need to complete to obtain your Deakin qualification. The assessment of credit is based on a number of factors and is determined on an individual basis. To find out what credit you may be entitled to, please visit [deakin.edu.au/courses/credit](https://deakin.edu.au/courses/credit).

Deakin has formal pathway programs and special credit arrangements with its four partner TAFEs (Box Hill Institute and Chisholm in Melbourne, South West TAFE in Warrnambool and The Gordon in Geelong) however if you have completed a qualification at a non-partner TAFE, you can still apply to Deakin.

## Melbourne Institute of Business and Technology (MIBT)

Deakin University and the Melbourne Institute of Business and Technology (MIBT) have been in partnership for more than 15 years. MIBT can provide an excellent pathway to Deakin for students who do not meet the admission requirements for Deakin University courses. MIBT is located at Deakin's Melbourne Burwood Campus, Geelong Waterfront Campus and Geelong Warrnambool Campus, allowing you the opportunity to gain access to Deakin's facilities and services and get involved in uni life.

MIBT may provide a direct pathway to second-year psychology studies at Deakin (conditions apply).

MIBT diplomas are equivalent to the first year of a Deakin University undergraduate degree. On successful completion of a diploma and meeting University academic entrance criteria, you may be eligible for entry to second year of a Deakin University undergraduate psychology degree.

## Single unit (non-award) study

You may wish to undertake a single unit of study at Deakin (without being enrolled or accepted into a course). These units are subject to fees and do not lead to a degree, but may be credited towards a degree if you succeed in gaining entry to a course at a later stage.

For more information, please visit [deakin.edu.au/study-at-deakin/apply/other-types-of-application/apply-for-a-single-subject](https://deakin.edu.au/study-at-deakin/apply/other-types-of-application/apply-for-a-single-subject).

---

For more information on pathways into Deakin University, please visit [deakin.edu.au/pathways](https://deakin.edu.au/pathways).

---

## PATHWAYS TO FULL REGISTRATION

Refer to page 4 to find out how you can gain full registration as a psychologist.

## DID YOU KNOW?

Deakin offers a range of scholarships to support students in their studies. For more information, please visit [deakin.edu.au/scholarships](https://deakin.edu.au/scholarships).

## CHOICE OF CAMPUS

One of the great things about Deakin is that we have four campuses throughout Victoria. Many of our courses are offered at more than one campus and the ATAR required for each campus often differs, but the same high-quality degree is delivered no matter which campus you study at. This provides you with more entry options and enables you to transfer your studies from one campus to another.



Geelong Waterfront Campus

## PATHWAYS TO A CAREER IN MEDICINE

Successful completion of the Bachelor of Applied Science (Psychology)<sup>^</sup>, Bachelor of Psychology, or Bachelor of Health Sciences with electives in biomedical science, are some of the many pathways for graduates to apply for entry into Deakin's Bachelor of Medicine Bachelor of Surgery, offered at the Geelong Warrnambool Campus.

<sup>^</sup> From 2014, this course may be renamed the Bachelor of Psychological Science (subject to approval).



# HOW TO APPLY

Applying to study at Deakin University is easy. Whether you are a current Year 12 student, TAFE graduate, mature-age student, non-school leaver, or international student studying VCE in Australia, you can apply to study a Deakin undergraduate course through the Victorian Tertiary Admissions Centre (VTAC) (unless stated otherwise in the VTAC CourseSearch [www.vtac.edu.au](http://www.vtac.edu.au) or under the individual course entries in this booklet).

Please note, all applicants for the Bachelor of Applied Science (Psychology)\* in Craigieburn and Bachelor of Applied Science (Psychology)\* in Dandenong must apply directly to Deakin University using the approved application form. For more information (including application closing dates) and to apply, please visit [deakin.edu.au/study-at-deakin/study-options-and-pathways/pathways-to-deakin/bachelor-of-applied-science-psychology](http://deakin.edu.au/study-at-deakin/study-options-and-pathways/pathways-to-deakin/bachelor-of-applied-science-psychology) or [deakin.edu.au/dandenong](http://deakin.edu.au/dandenong).

When you are applying for a course, make sure you check all of the entry requirements carefully. Most courses have prerequisites and some have additional requirements that you will need to complete to be eligible for selection into that course.

For prerequisite and extra requirement information, please visit the VTAC website [www.vtac.edu.au](http://www.vtac.edu.au).

For more information on how to apply, including special consideration and deferment, please visit [deakin.edu.au/study-at-deakin/apply](http://deakin.edu.au/study-at-deakin/apply).

^ From 2014, this course may be renamed the Bachelor of Psychological Science (subject to approval).

## DID YOU KNOW?

If your application to study at Deakin is successful but it's not the right time for you to commence university, you can defer your studies in most Deakin courses for up to two years. This means you can postpone your studies to work, travel or volunteer and still retain your university place. For more information, please visit [deakin.edu.au/study-at-deakin/apply/enrol-defer-withdraw-or-transfer](http://deakin.edu.au/study-at-deakin/apply/enrol-defer-withdraw-or-transfer).



## GEORGINA SPEAK

BACHELOR OF PSYCHOLOGY  
GEELONG WAURN PONDS CAMPUS

'Deakin offers a fantastic psychology course. I really enjoy mixing with people who share the same passion for this fascinating science and studies in mental health.

The interaction we have with our tutors and lecturers is fantastic. They are approachable and encourage us to ask questions, making the learning environment really interactive. They have been so supportive and it is clear they are passionate about seeing students excel in their studies.

Throughout the course I have been encouraged to extend my learning and have acquired valuable skills in communication and critical thinking that are preparing me for a successful career in psychology.

I am really enjoying my honours year and am passionate about my research project which is about breast cancer survivorship in young women.'





The Deakin University Library provides vibrant, technology-rich and inviting learning spaces on every campus, giving you a wide choice of study options.

# FIND OUT MORE

## Talk to us

For more information, phone 1300 DEGREE (1300 334 733) to speak with a course adviser. You can also contact us via email at [enquire@deakin.edu.au](mailto:enquire@deakin.edu.au).

## Website

Deakin on the web, [deakin.edu.au](http://deakin.edu.au), contains detailed information on everything at Deakin, including:

- courses
- fees
- campuses
- facilities and services
- applications and scholarships
- events and activities for VCE, TAFE and non-school leavers
- student profiles.

To search for courses and click through to unit descriptions visit [deakin.edu.au/courses](http://deakin.edu.au/courses) or [deakin.edu.au/handbook](http://deakin.edu.au/handbook).

School of Psychology website: [deakin.edu.au/health/psychology](http://deakin.edu.au/health/psychology).

## Other useful websites

### Future students

[deakin.edu.au/study-at-deakin](http://deakin.edu.au/study-at-deakin)

### Subject information

[deakin.edu.au/handbook](http://deakin.edu.au/handbook)

### Campuses

[deakin.edu.au/campuses](http://deakin.edu.au/campuses)  
[deakin.edu.au/tour](http://deakin.edu.au/tour)

### Clubs and societies

[dusa.org.au/pages/clubs](http://dusa.org.au/pages/clubs)

### Scholarships

[deakin.edu.au/scholarships](http://deakin.edu.au/scholarships)

### Services and facilities

[deakin.edu.au/campus-life/services-and-facilities](http://deakin.edu.au/campus-life/services-and-facilities)

### VTAC

[www.vtac.edu.au](http://www.vtac.edu.au)

### Study Assist

[studyassist.gov.au](http://studyassist.gov.au)

## Social media@Deakin

Connect with Deakin University on Facebook, Twitter and YouTube. Talk with other future students and ask current students and staff about life and study at Deakin.

[facebook.com/DeakinUniversity](https://facebook.com/DeakinUniversity)

[twitter.com/DiscoverDeakin](https://twitter.com/DiscoverDeakin)

[youtube.com/DeakinUniversity](https://youtube.com/DeakinUniversity)

## Visit us

There are many opportunities throughout the year to visit Deakin, experience a campus tour and talk with representatives face-to-face.

To organise a campus tour and presentation for an individual or group, please phone:

Geelong 03 5227 8525

Melbourne 03 9246 8063

Warrnambool 03 5563 3444

or email [future-students@deakin.edu.au](mailto:future-students@deakin.edu.au).

For our 2013 Open Day dates, see the back cover of this guide.

For more information on event dates visit [deakin.edu.au](http://deakin.edu.au) or phone 1300 DEGREE (1300 334 733).

## Victorian Tertiary Admissions Centre (VTAC)

Contact VTAC for information about:

- the application process
- VCE prerequisites
- extra requirements
- middle-band selection
- clearly-in ATARs
- fees
- Special Entry Access Schemes (SEAS).

[www.vtac.edu.au](http://www.vtac.edu.au)

## Further reading

Deakin University produces a range of booklets to help you choose the right course. These include:

- *2014 Undergraduate Course Guide*
- *Accommodation Guide 2014*
- *Introduction to University Guide*
- *Pathways to Deakin 2014*
- *Parents' magazine*
- *Off-Campus Course Guide 2014*
- *University handbook 2013*  
[deakin.edu.au/study-at-deakin/find-a-course/university-handbook](http://deakin.edu.au/study-at-deakin/find-a-course/university-handbook) (online only)
- *Deakin at Your Doorstep* (Associate Degree of Arts, Business and Sciences)
- 2014 undergraduate career booklets
- postgraduate course information.

You can download copies of these brochures at [deakin.edu.au/course-guides](http://deakin.edu.au/course-guides) or to request copies of any of the above, email [enquire@deakin.edu.au](mailto:enquire@deakin.edu.au) or phone 1300 DEGREE (1300 334 733).

Deakin University also produces course guides specifically for international students. To request a copy phone Deakin International on +61 3 9627 4877 or email [deakin-international@deakin.edu.au](mailto:deakin-international@deakin.edu.au).

# IMPORTANT DATES 2013

## DEAKIN EVENTS

**Sunday 4 August**

Open Day  
Warrnambool Campus

**Sunday 11 August**

Open Day  
Geelong Warrnambool Campus and  
Geelong Waterfront Campus

**Sunday 25 August**

Open Day  
Melbourne Burwood Campus

Deakin will hold additional events for prospective students and parents. Please visit [deakin.edu.au/study-at-deakin](http://deakin.edu.au/study-at-deakin) for updates.

## APPLICATION DATES

### Trimester 1

**Early August\***

VTAC applications open

**Late September\***

Timely VTAC applications close

**Mid November\***

Late VTAC applications close (late fee applies)

**Mid December\***

Very late VTAC applications close (very late fee applies)

**December**

Change of Preference

Please check the Deakin University Change of Preference website closer to the date for specific event details, [deakin.edu.au/cop](http://deakin.edu.au/cop).

\* Please check the VTAC website [www.vtac.edu.au](http://www.vtac.edu.au) closer to the time for specific dates.

Please note, application dates for the Bachelor of Applied Science (Psychology)\* in Craigieburn and Dandenong are different to those listed above. For more information, please visit [deakin.edu.au/study-at-deakin/study-options-and-pathways/pathways-to-deakin/bachelor-of-applied-science-psychology](http://deakin.edu.au/study-at-deakin/study-options-and-pathways/pathways-to-deakin/bachelor-of-applied-science-psychology) or [deakin.edu.au/dandenong](http://deakin.edu.au/dandenong).

^ From 2014, this course may be renamed the Bachelor of Psychological Science (subject to approval).

### Trimester 2 and 3

Trimester 2 applications open in April and

Trimester 3 applications open in August.

Course availability and places may be limited. Please visit [deakin.edu.au/apply](http://deakin.edu.au/apply) closer to the time for more information and specific dates.

## CAREER EXPOS

### Melbourne

**Thursday 2–Sunday 5 May**

The Age VCE Careers Expo

**Saturday 1–Sunday 2 June**

Melbourne – Reinvent Your Career Expo

**Friday 16–Sunday 18 August**

Herald Sun Careers Expo

### Interstate

**Saturday 23–Sunday 24 March**

Brisbane – Reinvent Your Career Expo

**Sunday 12–Monday 13 May**

Adelaide – Tertiary Studies and Careers Expo

**Thursday 16–Sunday 19 May**

Perth – Careers, Education and Employment Expo

**Saturday 20–Sunday 21 July**

Brisbane – The Tertiary Studies Expo (TSXPO)

**Saturday 21–Sunday 22 September**

Sydney – Reinvent Your Career Expo

## VTAC OFFERS

**Late November\***

Early round offers

**Mid to late January 2014\***

Round 1 offers

**Mid to late January 2014\***

Negotiated offers (irregular offers)

**Early February 2014\***

Round 2 offers

\* Please check the VTAC website [www.vtac.edu.au](http://www.vtac.edu.au) closer to the time for specific dates.



Box Hill Institute CRICOS Provider Code: 02411J  
Chisholm Institute of TAFE CRICOS Provider Code: 00881F  
Gordon Institute of TAFE CRICOS Provider Code: 00011G  
Melbourne Institute of Business and Technology (MIBT) CRICOS Provider Code: 01590J  
South West Institute of TAFE CRICOS Provider Code: 01575G

## **MORE INFORMATION | PSYCHOLOGY**

1300 DEGREE (1300 334 733) | [enquire@deakin.edu.au](mailto:enquire@deakin.edu.au) | [deakin.edu.au/health/psychology](http://deakin.edu.au/health/psychology)  
Health – Student and Academic Services | 03 9251 7777 | [health-enquire@deakin.edu.au](mailto:health-enquire@deakin.edu.au)

# **2013 DEAKIN UNIVERSITY OPEN DAYS**

**04.08.13**

## **WARRNAMBOOL CAMPUS**

Princes Highway  
Warrnambool Victoria

**11.08.13**

## **GEELONG WAURN PONDS CAMPUS**

75 Pigdons Road  
Waurm Ponds Victoria

## **GEELONG WATERFRONT CAMPUS**

1 Gheringhap Street  
Geelong Victoria

**25.08.13**

## **MELBOURNE BURWOOD CAMPUS**

221 Burwood Highway  
Burwood Victoria

**deakin.edu.au**

Published by Deakin University in March 2013. While the information published in this guide was accurate at the time of publication, Deakin University reserves the right to alter, amend or delete details of course offerings and other information published here. For the most up-to-date course information please view our website at [deakin.edu.au](http://deakin.edu.au).

Deakin University CRICOS Provider Code: 00113B