

2016 POSTGRADUATE HEALTH

Melbourne | Geelong | Warrnambool | Cloud (online)

AGRICULTURAL HEALTH
AND MEDICINE

CHILD PLAY THERAPY

CLINICAL EXERCISE
PHYSIOLOGY

HEALTH AND HUMAN
SERVICES MANAGEMENT

HEALTH ECONOMICS

HEALTH PROMOTION

OPTOMETRY

PUBLIC HEALTH

SOCIAL WORK

RESEARCH DEGREES



Deakin is recognised in Australia and internationally for its contribution to teaching, training, research and service. The Faculty of Health is one of the fastest growing health faculties in Australia, assisting governments, communities and organisations to develop a wide variety of health and social policies and programs.



IN THIS GUIDE

- 03 WHY DEAKIN?
- 04 WHAT CAN I STUDY?
- 10 RESEARCH IN HEALTH
- 16 STUDY OPTIONS AND APPLICATIONS
- 17 COURSES AT DEAKIN
- 19 FIND OUT MORE

WHY DEAKIN?

Rural and regional focus

Many of our health courses have a rural and regional focus, giving you a broader perspective on your studies. You can undertake placements in rural and regional locations to complement knowledge and skills gained from metropolitan settings.

Our research makes a difference

The research profile of Deakin staff is facilitated by collaborative relationships with numerous hospitals, clinics, health care networks, communities and support centres. These partnerships enable us to provide our students with excellent opportunities to pursue their own research, as well as providing a diverse range of clinical placement opportunities.

Get experience in the real world

To bring your learning experiences to life we offer a variety of practical study opportunities, with many health courses incorporating a variety of placements throughout the duration of your degree, providing you with the opportunity to gain valuable skills and experience under the supervision of qualified practitioners. For example, clinical exercise physiology students start working with clients within a few weeks of commencing the course and social work students complete a minimum of 1000 hours of fieldwork placements that are conducted in a variety of communities and workplaces in metropolitan and regional settings.

Learn with students from other health courses

Deakin health students engage in multidisciplinary learning. For example, agricultural health and medicine students work with students from a range of other health disciplines, including, for example, psychology, nursing, public health and public policy. This experience introduces you to working in multidisciplinary teams and helps to develop an understanding of the expertise and role of different health professionals.

State-of-the-art facilities

Deakin's facilities are state of the art and modelled on those used in industry. For example, clinical exercise physiology students have access to an award-winning clinic at the Melbourne Burwood Campus, as well as undertaking part of the course at Baker IDI Heart and Diabetes Institute, and optometry students have access to cutting-edge facilities within the new purpose-built Regional Community Health Hub (REACH).

Flexible learning

Deakin offers flexible learning options. Many of our postgraduate health programs can be studied in Geelong, Melbourne or via cloud (online) learning, as well as full time or part time, increasing flexibility and enabling you to fit your study in with other commitments. Deakin's trimester system allows you to fast track your studies and complete your program within a shorter timeframe.



Deakin Health is guided by a strong and vibrant commitment to improving the health and wellbeing of all people in Australia and our surrounding region. ”

Professor Brendan Crotty,
Pro Vice-Chancellor, Faculty of Health

WHAT CAN I STUDY?

Agricultural health and medicine

The agricultural health and medicine program looks at the ways in which the physical and mental health of rural and remote workforces can be improved, highlighting how health, safety and wellbeing are essential for productivity in primary industries and agribusiness.

The program is relevant to a wide variety of graduate-level students and professionals from nursing, medicine, health, agricultural science, agribusiness, social work, veterinary and environmental science backgrounds, developing your knowledge of the physical and mental health issues facing our rural and remote communities.

The course is recognised by AgriSafe Australia and allows clinically trained graduates to become AgriSafe practitioners. It is accredited to offer continuing education and professional development through a number of professional colleges and associations, including the Australian College of Rural and Remote Medicine, the Australian Association of Social Workers, the Australian Veterinary Association and the Royal Australian College of General Practitioners.

Graduate Certificate of Agricultural Health and Medicine

Child play therapy

Child play therapy is a growing specialist area within the mental health and early childhood sectors. It is an evidence-based profession in which play is used to transform children's lives when they have experienced abuse or trauma, have a developmental disorder, or are experiencing a mental health issue. The orientation of the course is primarily humanistic but other approaches are presented in the course materials. Placement units are an important component of the program.

This course encourages you to develop your interpersonal, creative and expressive capacities, including spontaneity and playfulness, in order to work effectively with children and their families as a child play therapist. Assessments cover a wide spectrum from formal examinations to in-class activities.

Graduates are eligible to become a registered play therapist with the Australasian Pacific Play Therapy Association (APPTA).

Master of Child Play Therapy



Deakin is the only university in Australia offering postgraduate studies in child play therapy.





Deakin's Master of Clinical Exercise Physiology was the first Exercise and Sports Science Australia (ESSA) accredited postgraduate course in Victoria, with the course and its graduates receiving a number of ESSA awards, including runner-up exercise physiology practice of the year (2012), supervisor of the year (2014) and graduate of the year (2014).

Clinical exercise physiology

Clinical exercise physiologists provide exercise services for people who are living with or at risk from cardiovascular, respiratory/pulmonary, metabolic, musculoskeletal, neuromuscular/neurological disease and many other chronic conditions that are known to respond positively to exercise, such as cancer, mental ill-health and chronic pain.

Deakin's postgraduate clinical exercise physiology program has a strong emphasis on developing practical skills through clinical placements, which are arranged by Deakin. All students gain practical experience in a range of settings, with part of the course provided at Baker IDI Heart and Diabetes Institute, as well as state-of-the-art facilities at Deakin.

Accredited exercise physiologists (AEPs) are university-trained clinical exercise practitioners. Deakin's Master of Clinical Exercise Physiology is the first course in Victoria to have achieved AEP accreditation with Exercise and Sports Science Australia (ESSA). As a graduate of this course, you are eligible to apply for professional registration as an AEP with ESSA. You also meet the eligibility criteria to register with Medicare, WorkSafe and other compensable schemes as an allied health professional service provider and your accreditation will be recognised throughout Australia.

Deakin also offers the first nationally accredited undergraduate–postgraduate articulated pathway to AEP accreditation in Victoria: the Bachelor of Exercise and Sport Science followed by the Master of Clinical Exercise Physiology. Graduates of Deakin's Bachelor of Exercise and Sport Science who completed the ESSA sequence of units, are eligible for accreditation from ESSA as an exercise scientist, and will satisfy the admission requirements for application to the Master of Clinical Exercise Physiology, provided they can demonstrate evidence of 140 hours of exercise service delivery for apparently healthy clientele.

Successful completion of both these degrees leads to professional registration as an AEP with ESSA.

Master of Clinical Exercise Physiology

For more information about these courses, including fees, duration and prerequisites, please see pages 17–18.

SCHOLARSHIPS

At Deakin, we believe everyone should have the option of going to university. There is an array of scholarships available to students through Deakin and other parties, including the Australian Government.

For a full list of scholarship opportunities and information on how to apply, please visit deakin.edu.au/study-at-deakin/scholarships-and-awards.



WHAT CAN I STUDY?

CONTINUED

Health and human services management

Deakin's Master of Health and Human Services Management sets you on track for the next step in your health career toward management and leadership. Learn to make evidence-based decisions that focus on improving the quality of health service delivery – a sector that has seen strong growth in recent years.

The content of this course focuses on business and management issues within health – making it the most relevant business administration course for the health sector.

You have the opportunity to tailor the course to suit your interests by taking a range of elective units from a number of specialty streams, including:

- health economics
- public health research
- business administration.

There is also flexibility of choice between research or coursework to suit your interests and career aspirations.

Master of Health and Human Services Management

Health economics

Join the largest health economics team in Australia. Are you a health professional or economist interested in furthering your knowledge of health economics in Australia and internationally? Deakin's postgraduate course in health economics provides graduates from a range of areas, from nursing and pharmacy to commerce and public health, and more, with specialist training in the application of health economics to health policy, health technology assessment and the health care system.

Students develop a strong theoretical foundation and are equipped with analytical and quantitative skills to understand the complexities of health care financing, undertake economic evaluation of health care interventions and advise on health policy development.

Master of Health Economics

Health promotion

Preventing illness and promoting health are major aspects of the work of health agencies in all developed and developing countries. Deakin's postgraduate courses in health promotion enable students from varying backgrounds to acquire the knowledge and skills to develop appropriate and evidenced-based health promotion programs.

Career direction and professional development are strong drivers of Deakin's postgraduate health promotion programs. Our courses are designed for you to take ownership of your learning and career direction so that you can build the capacity to be an effective, confident health promotion practitioner.

Our health promotion courses focus on your professional development. Our partnerships with local industry give you access to cutting-edge health promotion practice, enhance your health promotion skills and prepare you to develop attributes valued by employers, such as critical analysis, creativity, reflective practice and lifelong learning.

Master of Health Promotion

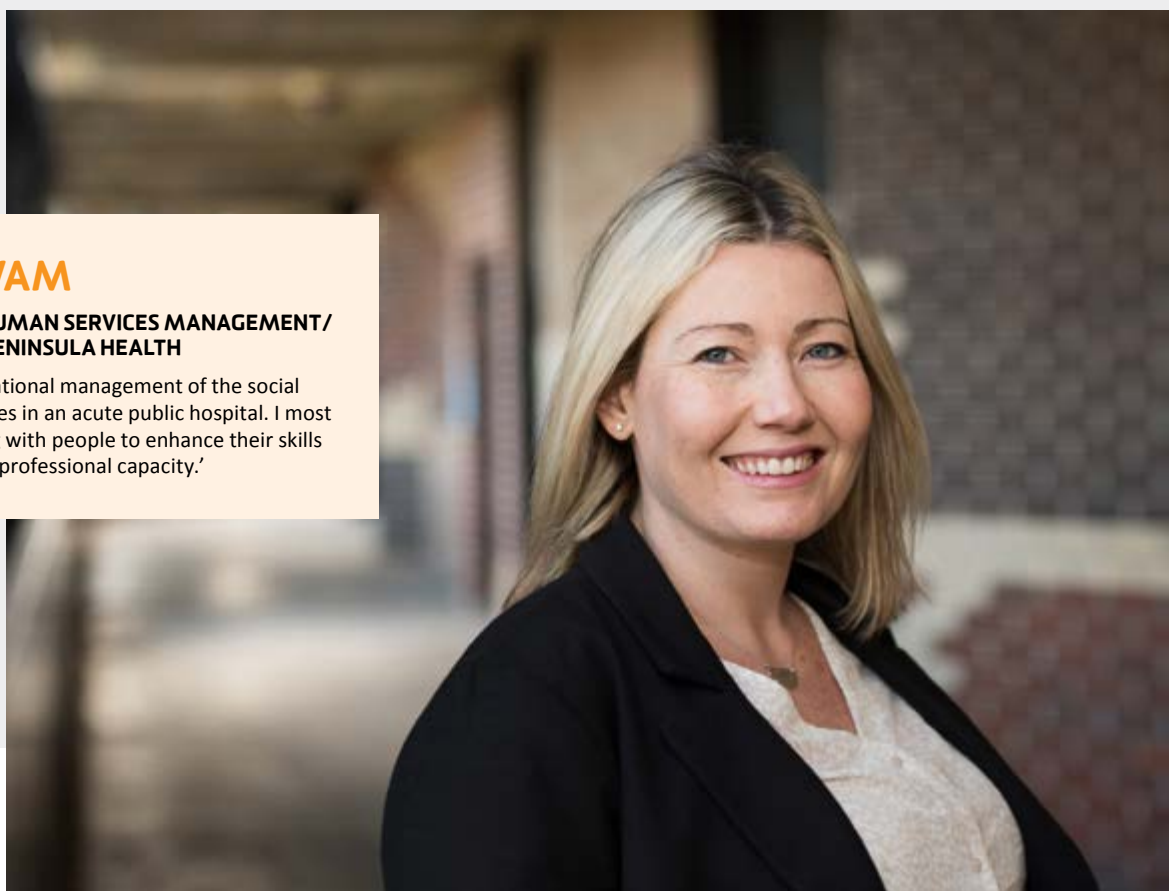
Graduate Diploma of Health Promotion

Graduate Certificate of Health Promotion

LOUISE WHITWAM

**MASTER OF HEALTH AND HUMAN SERVICES MANAGEMENT /
SENIOR SOCIAL WORKER, PENINSULA HEALTH**

'I'm currently working in operational management of the social work staff, who provide services in an acute public hospital. I most enjoy the challenge of working with people to enhance their skills and bring out the best in their professional capacity.'



Optometry

Deakin offers Australia's first accelerated optometry course. Offered as a combined course, the Bachelor of Vision Science/Master of Optometry is unique in many ways. It has an emphasis on case and team-based learning; an extensive, fully equipped clinical skills facility; industry partnerships; and a curriculum that delivers excellence across clinical, commercial and professional domains in optometry.

As a Deakin optometry student, you have access to cutting-edge facilities within the new, purpose-built Regional Community Health Hub (REACH). This \$53 million project was opened in late 2012 and targets myriad of underlying socio-economic and geographic challenges in order to recruit, train and retain health professionals in country areas. We offer the optometry program through REACH, utilising remote teaching via an innovative e-health learning and tele-teaching facility, which links students, practitioners, hospitals, TAFEs and other education centres across regional Victoria in an online environment.

Bachelor of Vision Science/Master of Optometry

For more information about these courses, including fees, duration and prerequisites, please see pages 17–18.

PRIYAL BHOOLA

BACHELOR OF VISION SCIENCE / MASTER OF OPTOMETRY

'Our eyes are essentially the window to the world and working with people to improve their vision is very rewarding for me.'

REGIONAL FOCUS

Optometry at Deakin is committed to training work-ready optometrists to address the workforce shortage in eye care in regional, rural and remote areas of Australia. To address this shortage, from 2016 onwards, a 'Regional and Remote Entry Scheme' will be available to applicants who completed their Year 12 studies in a school located in a regional or remote area or in the City of Greater Geelong.

The entry scheme has a separate VTAC code and offers an alternative entry pathway into the Bachelor of Vision Science/Master of Optometry.

For more information, please visit deakin.edu.au/medicine/optometry.



WHAT CAN I STUDY?

CONTINUED

Public health

Deakin's public health program is flexible in terms of both the way that you access your study and also in relation to what you want to get out of your postgraduate degree. With the course now available via cloud (online) learning, you can manage your study around both professional and personal commitments.

The degree's flexible structure (half core, half elective) allows you to tailor a degree across a number of career pathways to suit your interests and career aspirations.

Career pathways are offered in six areas:

- applied research
- environments for health
- health economics and management
- health promotion and community development
- public health nutrition
- public health practice.

This postgraduate degree is perfect for medical professionals, allied health workers and clinicians who are looking for 'bigger picture' approaches that improve the health of individuals, populations, the environment and communities.

Master of Public Health

For more information about these courses, including fees, duration and prerequisites, please see pages 17–18.

Social work

Social work is concerned with enhancing the wellbeing of people in their social environments. It is a broad profession with diverse practices that may include working with individuals, families, groups, communities and organisations. At Deakin, our postgraduate program has a particular emphasis on race and gender issues; equity, power and diversity issues; social and community development; regional communities and critical, anti-oppressive and empowerment approaches to social work practice and social policy.

Deakin's Master of Social Work is an Australian Association of Social Workers (AASW) accredited qualification, allowing entry into the social work profession and has been determined to meet the Australian Social Work Education and Accreditation Standards (ASWEAS). The AASW recognises Deakin's social work program's commitment to 'critically reflective practice', which sets it apart from other social work programs in Australia. As a Deakin social work graduate you will be eligible to apply for membership of the AASW and seek employment throughout Australia. The Master of Social Work creates a new pathway for entry into the profession and prepares graduates for a more advanced level of practice.

Fieldwork provides you with the opportunity to gain valuable skills and practical experience under the supervision of qualified social work practitioners. During the course you complete a minimum of 1000 hours of fieldwork placements that are conducted in a variety of communities and workplaces in metropolitan and regional settings.



Master of Social Work



WORK PLACEMENT REQUIREMENTS

In accordance with Department of Human Services policy*, all students are required to undertake a National Police Record Check prior to clinical placements in each calendar year of their course. Students who fail to obtain a Police Record Check prior to the commencement of clinical placement will not be able to undertake clinical placement.

Students may also be required to declare their immunisation status to satisfy the requirements of health organisations where they will be undertaking their clinical learning experience.

* Department of Human Services Policy on Working with Children Check and Police Records Checks can be found at: www.dhs.vic.gov.au/facs/bdb/fmu/service-agreement/4.departmental-policies-procedures-and-initiatives/4.6-safety-screening-for-funded-organisations.

RELATED POSTGRADUATE HEALTH COURSES

For information on all of the Faculty of Health's postgraduate courses, please see also:

- *2016 Postgraduate Medicine* booklet
- *2016 Postgraduate Nursing and Midwifery* booklet
- *2016 Postgraduate Nutrition and Dietetics* booklet
- *2016 Postgraduate Psychology* booklet.

“

Our programs in public health, disability, occupational therapy and social work are built on international collaborations that not only show our standing in the field, but also ensures that our graduates are at the cutting edge and make a difference of global importance.”

Catherine Bennett,
Head of School, School of Health and Social Development

THE ONE HUNDRED
UNDER
FIFTY



DEAKIN CRACKS WORLD'S TOP 50 YOUNG UNIVERSITIES

Deakin has continued its climb up the Times Higher Education (THE) list of the world's top 100 universities under 50 years old, cracking the top 50 for the first time.

Deakin has been ranked number one in Victoria, number six in Australia and number 45 in the world.

The news confirms Deakin's rise in the ranks of the very best young universities worldwide, after prestigious international university rankings organisation Quacquarelli Symonds (QS) last year listed Deakin at number 50 on its Top 50 under 50.

Vice-Chancellor Professor Jane den Hollander says at only 40 years young, Deakin owes its continuing success to a strong vision for the future and its wonderful staff, researchers, students, communities and partners.

'In the past two years, Deakin has leapt 21 places from 66 to 45 in the list of the top 100 universities under 50 years old,' Professor den Hollander says.

'Times Higher Education says younger universities are bullish and "they have no fear of the future or of older rivals" – and I couldn't agree more. Deakin is ready to drive the innovation that will create the jobs of the future.'



JENNA HUSON

**BACHELOR OF SOCIAL WORK (HONOURS)/
DHS CHILD PROTECTION GEELONG**

'I identify with the holistic approach of social work, rather than simply "treating the symptoms".'

RESEARCH IN HEALTH

The Faculty of Health conducts a wide variety of research activities and is affiliated with six of Deakin University's Strategic Research Centres (SRCs). These SRCs work with national and international partners in health communities, business, industry and government to bring about evidence-based practical, equitable health outcomes globally, nationally and in local communities.

- Centre for Social and Early Emotional Development
- Centre for Physical Activity and Nutrition Research
- Centre for Quality and Patient Safety Research
- Innovation in Mental and Physical Health and Clinical Treatment (IMPACT)
- Molecular and Medical Research
- Population Health.

Research partners

The Faculty of Health values its research partnerships with key organisations in the fields of public health, health promotion, occupational therapy and social work. We currently have partnerships with the following organisations:

- Department of Health and Human Services
- Parks Victoria
- World Health Organization
- Victorian Health Promotion Foundation (VicHealth).





RESEARCH IN HEALTH

CONTINUED

Research areas

The Faculty of Health offers research programs at master's and doctorate level across a broad range of health-related disciplines. An overview of the Faculty's research areas is outlined below. For more information, including a comprehensive list of supervisors for the research areas, please visit deakin.edu.au/health/research.

Disability

Social inclusion, equity and access issues and the nature of disability in the areas of employment, assistive technologies, the law, community living and evaluation of services, policy development and program delivery, organisational behaviour, psychiatric disabilities and community integration, relationships and positive behaviour support, human rights, inclusive practice, policy and research.

Exercise and sport science

Physical activity and health, muscle and tendon metabolism, movement analysis, physical activity and neurological adaptation, physiological demands of demanding occupations, musculoskeletal rehabilitation and sport performance.

Food and nutrition science

Diet and disease interactions, including specific interests in cancer, cardiovascular disease, hypertension, obesity, diabetes, osteoporosis and gut health, chemical and sensory evaluation, with an emphasis on novel functional foods, salt and polyphenolics, molecular nutrition and nutrigenomics, substantiation of health benefits of functional foods, food formulation, nutritional assessment, behavioural epidemiology and population health, public health policy and sports physiology and nutrition.

Medicine

Infectious diseases, cancer, cardiovascular disease, diabetes, developmental biology, immunity, inflammation, molecular nutrition, muscle diseases, nanomedicine, obesity, physiology, psychiatry, psychological interventions; and ageing, farmer health, rural and regional general practice, imaging, public health, vision science, epidemiology, health service evaluation and medical education.

Nursing

Evidence-based clinical care and safety, quality and risk management in clinical, aged care and community settings. Other areas include: acute and critical care, transitional care, health services evaluation, symptom management, consumer involvement in health and social care decision-making, health care ethics and midwifery.

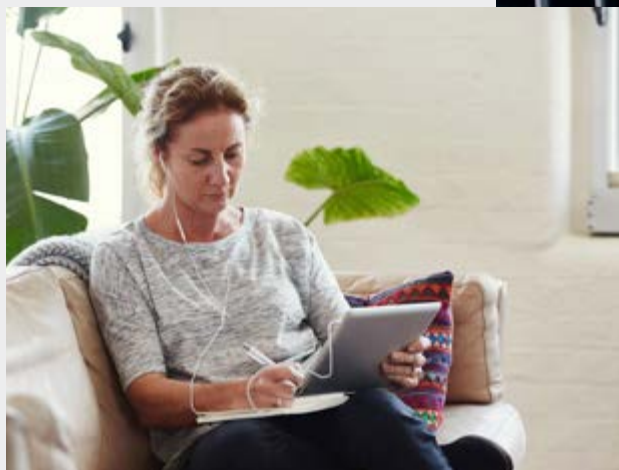
KATE GLEDHILL

MASTER OF PUBLIC HEALTH/ DOCTOR OF PHILOSOPHY

'My favourite subject was completing my major thesis as this really allowed me to see what a career in research would be like. It allowed me to research a topic that I was very passionate about and also allowed me to develop strong academic relationships with lecturers.'

I have stayed on at Deakin to study a PhD and being at Deakin has made me realise that I want a career in academia.'





Occupational therapy and sciences

Occupational therapy practice, research, and education in mental health, eating disorders prevention and treatment, carers support; early childhood intervention, specific learning disabilities, play as therapy, play assessment and intervention, coordination disorders and social adaptive behaviour.

Psychology

Neurodevelopmental disorders, autism, mental health and wellbeing of people with disabilities, cognitive neuroscience, ageing, reproductive health, diabetes, forensic psychology, investigative interviewing, addictions, violence prevention, intergenerational research, eHealth; body image and eating disorders, child and adolescent mental health and wellbeing, social and organisational psychology. The School of Psychology also provides the following specialist professional doctorate programs: Doctor of Psychology (Clinical) and Doctor of Psychology (Health).

Public health and health promotion

Health promotion: Understanding and promoting social and cultural aspects of health, encompassing: health and social justice, social diversity and improving the health of marginalised/excluded groups including groups marginalised or excluded by gender, ethnicity, sexuality and/or age, violence and abuse prevention, reproductive and sexual health, health literacy, social epidemiology encompassing social context and health, social relationships and health.

Health, nature and sustainability:

The relationships between human health and the natural environment, including environmental determinants of health, environmental deprivation and degradation and the importance of ecological sustainability to human health and wellbeing.

Health economics and program evaluations:

Community interventions, rural health, health and the environment encompassing sustainability, decision-making and community involvement, nutrition, physical activity and population health, international health, and health and human services systems.

Social work

Social work theory and practice, critical social work, evidence bases in social work, social work education, human services provision, child and family welfare, mental health, diversity and inclusivity, masculinities, religion and spirituality, gender relations and gender violence.

Deakin University and Department of Health and Human Services (Barwon – South Western Region) Partnership

The formal partnership between Deakin and the Department of Human Services (Barwon – South Western Region) was established in 1998 and represents a unique and innovative partnership that is committed to protecting and promoting the health and wellbeing of regional and rural Victorians.

Deakin University and Department of Health and Human Services (Eastern Metropolitan Region) Partnership

The partnership between Deakin and the Department of Human Services (Eastern Metropolitan Region) was launched in 2003 to enhance the health and social wellbeing of all people who live in the region, especially vulnerable people.

World Health Organization (WHO) Collaborating Centre for Obesity Prevention

The WHO Collaborating Centre for Obesity Prevention, established in 2003, conducts research into all aspects of obesity prevention, with a global health focus. Major research areas include:

- food policy
- health economics of obesity
- monitoring and benchmarking food environments, including INFORMAS (International Network for Food and Obesity Research, Monitoring and Action Support)
- community-based obesity prevention, including CO-OPS (Collaboration of Community-based Obesity Prevention Sites)
- pacific obesity prevention projects, through C-POND (Pacific Research Centre for the Prevention of Obesity and Non Communicable Diseases).

The centre was recently awarded as a Centre of Research Excellence in Obesity Policy and has also established several knowledge-translation organisations that it continues to support.

RESEARCH IN HEALTH

CONTINUED

Research study areas

Master of Applied Science (H817)

Research in health promotion; education and advancement; public health policy; household ecology encompassing sustainability, decision making and community involvement; social determinants of health with a focus on gender, ethnicity and inequality. Public Health research in nutrition includes measurement and evaluation of food sources; nutritional assessment; exercise and behaviour; sports nutrition; diet and disease with particular interest in cancer, cardiovascular disease, obesity, diabetes and osteoporosis.

Master of Arts (H830)

Research in exercise science/sport and physical activity and nutrition includes epidemiological, behavioural and social science analyses of activity in whole populations and special groups such as older adults; studies of muscle and bone metabolism and physiology of muscle, particularly as these relate to sporting performance and other forms of physical performance and endurance, and to precursors of chronic disease; and movement analysis and sport performance relating particularly to motor skill acquisition, perception and action, movement economy, and gait and falls in older adults.

Research in the discipline of nutrition also includes measurement and evaluation of food sources, sports nutrition, and diet and disease with a particular interest in cancer, cardiovascular disease, obesity, diabetes and osteoporosis.

Master of Applied Science (H831)

Research in health promotion; evaluation and health impact assessment; public health policy; rural health; health and the environment; social determinants of health; disability; social work; occupational therapy and community health.

Master of Applied Science (H842)

Research in exercise science/sport and physical activity and nutrition includes epidemiological, behavioural and social-science analyses of activity in whole populations and special groups such as older adults; studies of muscle and bone metabolism and physiology of muscle, particularly as these relate to sporting performance and other forms of physical performance and endurance, and to precursors of chronic disease; and movement analysis and sport performance relating particularly to motor skill acquisition, perception and action, movement economy, and gait and falls in older adults. Research in the discipline of nutrition also includes measurement and evaluation of food sources, sports nutrition, and diet and disease with particular interest in cardiovascular disease, obesity, diabetes and osteoporosis.

Master of Social Work (Research) (H803)

Further research training for qualified social workers. Research areas include: social work theory and practice, critical social work, evidence bases in social work, social work education, human services provision, child and family welfare, mental health, diversity and inclusivity, masculinities, religion and spirituality, gender relations and gender violence.

Doctor of Philosophy (H930)

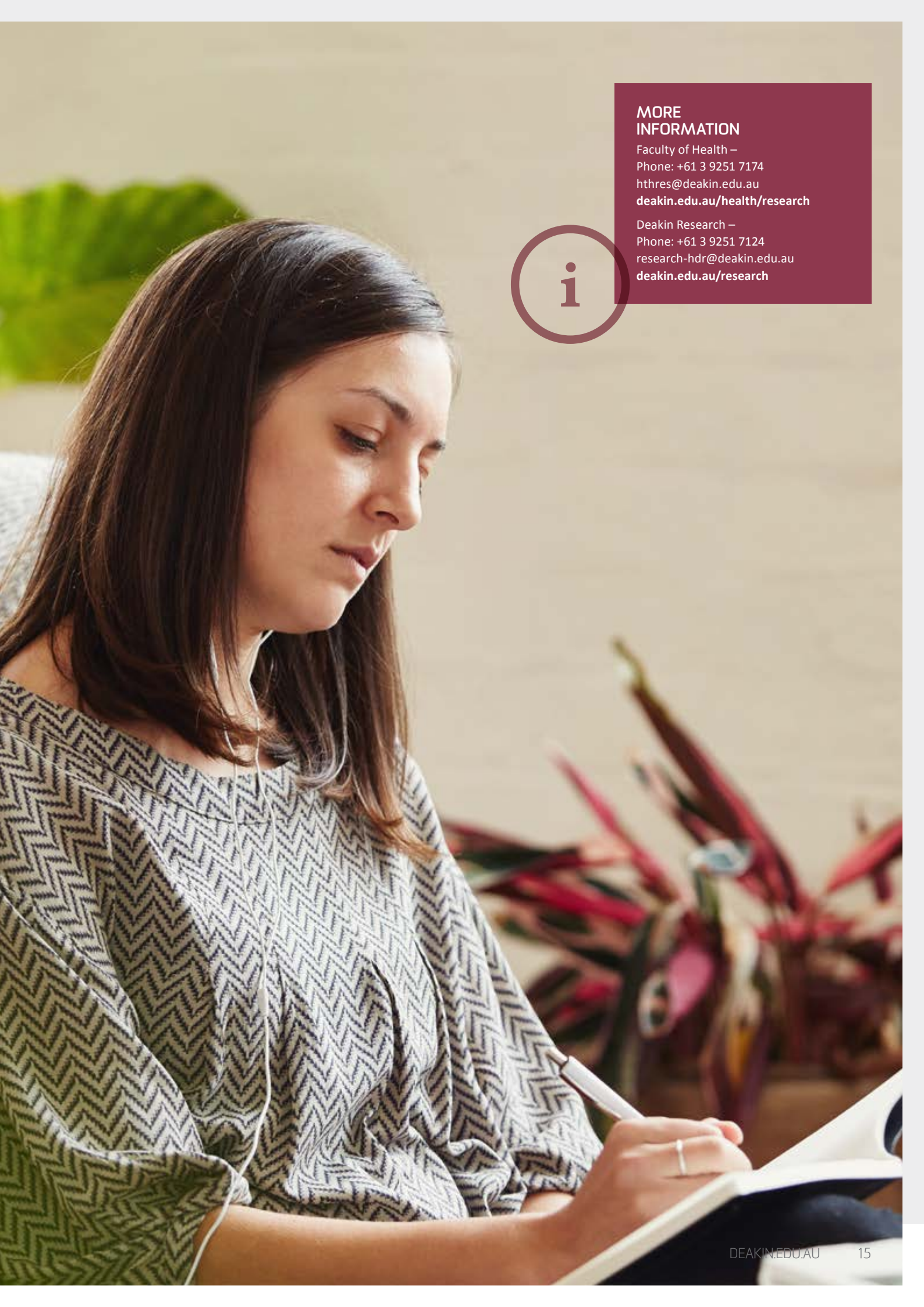
PhD research in health promotion; evaluation and health impact assessment; public health policy; rural health; health and the environment; social determinants of health; disability; social work; occupational therapy and community health.

Doctor of Philosophy (H910)

PhD research in health promotion; health education and advancement; public health policy; household ecology encompassing sustainability, decision making and community involvement; and social determinants of health with a focus on gender, ethnicity and inequality. Public health research in nutrition includes: measurement and evaluation of food sources; nutritional assessment; exercise and behaviour; sports nutrition; physiology and metabolism; diet and disease with particular interest in cancer, cardiovascular disease, obesity, diabetes and osteoporosis.

Doctor of Philosophy (H940)

Research in exercise science/sport and physical activity and nutrition includes epidemiological, behavioural and social science analyses of activity in whole populations and special groups such as older adults; studies of muscle and bone metabolism and physiology of muscle, particularly as these relate to sporting performance and other forms of physical performance and endurance, and to precursors of chronic disease; and movement analysis and sport performance relating particularly to motor skill acquisition, perception and action, movement economy, and gait and falls in older adults. Research in the discipline of nutrition also includes measurement and evaluation of food sources, sports nutrition, and diet and disease with particular interest in cardiovascular disease, obesity, diabetes and osteoporosis.



MORE INFORMATION

Faculty of Health –
Phone: +61 3 9251 7174
hthres@deakin.edu.au
deakin.edu.au/health/research

Deakin Research –
Phone: +61 3 9251 7124
research-hdr@deakin.edu.au
deakin.edu.au/research

STUDY OPTIONS AND APPLICATIONS

Study options

We provide a range of options and choices to allow your postgraduate study to suit your needs:

- If you're studying via cloud (online) learning, you really can study anywhere or any time. Our use of the cloud means you don't have to attend a campus to have a rich, interactive, personal and empowering learning experience.
- If you do choose campus learning, our four campuses in Melbourne, Geelong (Waterfront and Warrnambool, give you plenty of options.
- Life can change very quickly and what suits you one year, might not the next. That's why many courses give you the option to switch between full-time and part-time study, as your needs shift.
- With more than 150 postgraduate courses, there's plenty to choose from at Deakin. Many courses also give you the flexibility to tailor your studies to your interests and aspirations through your choice of elective subjects.
- We can help you fast-track your degree through our trimester system. Deakin has three trimesters, with an optional trimester over the summer, which means that for some courses you can study year-round and complete your degree sooner.

deakin.edu.au/study-at-deakin/study-options-and-pathways/flexible-study-options

Applications

Coursework applications

To apply for a postgraduate coursework degree you will usually need to have completed an undergraduate degree; however, there are other pathways. If you have considerable work or life experience, in some instances you may be able to use this to obtain admission into a graduate certificate or graduate diploma course. You may then progress to a master's degree subject to University approval.

Research applications

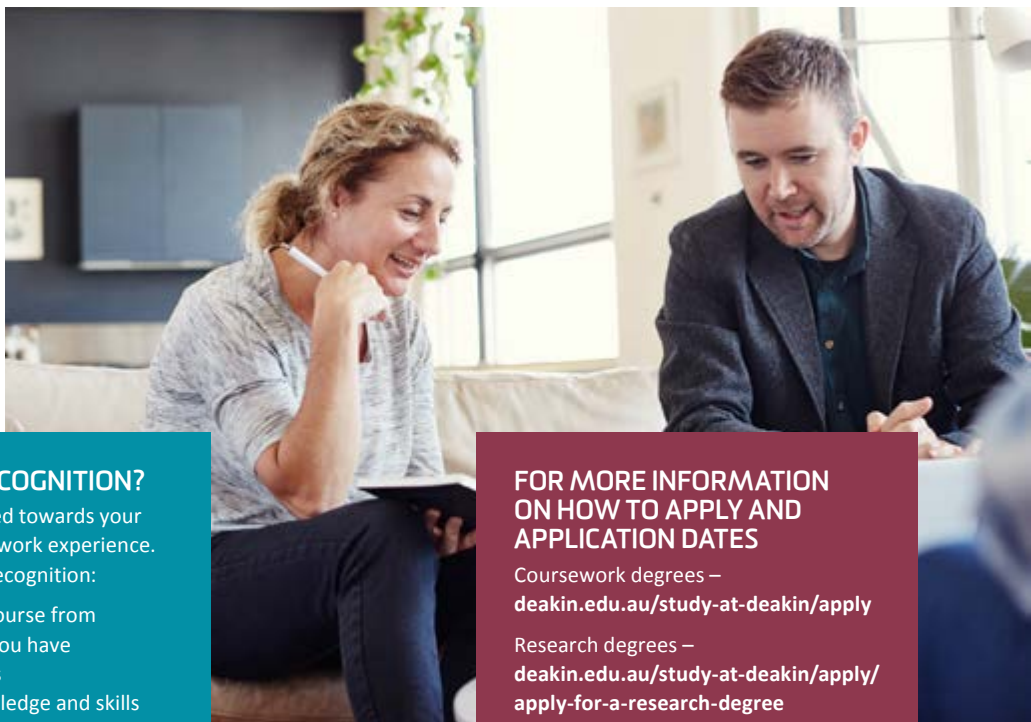
Deakin offers three types of research degrees: Master's by Research, Doctor of Philosophy (PhD) and Doctor of Psychology. A research degree requires the candidate to complete an approved program of research under the guidance of one or more supervisors within a time period. Supervisors are experienced and active researchers with expertise in the field of study.

Application dates

Applications for coursework degrees commencing in Trimester 3, 2015 and Trimester 1, 2016 open in August 2015. Applications for Trimester 2, 2016 open in April 2016. Some postgraduate courses have alternative application processes and closing dates. Applications for research candidature without scholarship may be made at any time.

STUDENT COMPUTING REQUIREMENTS

There are certain computing requirements students must meet in order to successfully study at Deakin. For more information, please visit deakin.edu.au/study-at-deakin/apply/computer-requirements.



WHAT IS CREDIT TRANSFER AND RECOGNITION?

Credit transfer and recognition is credit granted towards your Deakin course for relevant approved study or work experience. There are two aspects to credit transfer and recognition:

- credit may be transferred to your Deakin course from completed or partially completed studies you have undertaken at other accredited institutions
- credit may be granted on the basis of knowledge and skills acquired through uncredentialed learning.

deakin.edu.au/study-at-deakin/apply/credit-for-prior-learning

FOR MORE INFORMATION ON HOW TO APPLY AND APPLICATION DATES

Coursework degrees –
deakin.edu.au/study-at-deakin/apply

Research degrees –
deakin.edu.au/study-at-deakin/apply/apply-for-a-research-degree

General enquiries –
1300 DEGREE (1300 334 733).

Deakin Research –
phone +61 3 9251 7124,
email research-hdr@deakin.edu.au,
visit deakin.edu.au/study-at-deakin/research-degrees-doctoral-and-masters



COURSES AT DEAKIN

Melbourne Burwood Campus **B** T1 = Trimester 1
 Geelong Waterfront Campus **WF** T2 = Trimester 2
 Geelong Warrnambool Campus **WP** T3 = Trimester 3
 Warrnambool Campus **WB** FT = Full time
 Cloud (online) **X** PT = Part time

	CODE	YEARS FULL TIME [#]	CAMPUS	TRIMESTER INTAKE OPTIONS [^]	2016 FULL FEE-PAYING COST*	2015 INDICATIVE CSP COST*
Coursework						
Agricultural health and medicine						
Graduate Certificate of Agricultural Health and Medicine Admission requirements: A bachelor's degree or three years relevant work experience. This course includes a five-day residential unit.	H522	1 PT	X	T1, T2	\$12 000	—
Child play therapy						
Master of Child Play Therapy Admission requirements: Two years experience working with children and families and a relevant bachelor's degree or further studies relevant to therapeutic work with children and families.	H705	2	X [†]	T1	\$24 000	—
Clinical exercise physiology						
Master of Clinical Exercise Physiology Admission requirements: A bachelor's degree in relevant area with eligibility for exercise scientist accreditation from Exercise and Sports Science Australia and completion of 140 hours of exercise science service delivery for apparently healthy clientele.	H743	1.5	B	T1	\$24 000	\$8768
Clinical leadership						
Master of Clinical Leadership Admission requirements: A bachelor's degree in a health discipline or three years relevant work experience.	H702	1	X	T1, T3	\$24 000	—
Health economics						
Master of Health Economics Admission requirements: A bachelor's degree in one of the following disciplines: health, science, business, commerce or law.	H704	2 FT or PT equivalent	B X	T1, T2, T3	\$22 000	—
Health and human services management						
Master of Health and Human Services Management Admission requirements: A bachelor's degree in any discipline or two years relevant work experience.	H756	2 FT or PT equivalent	B X	T1, T2	\$22 760	—
Health promotion						
Graduate Certificate of Health Promotion Admission requirements: An approved tertiary qualification or two years relevant work experience. Course is under review in 2015 and may be subject to change.	H515	1 PT	B X	T1	\$12 000	—
Graduate Diploma of Health Promotion Admission requirements: An approved tertiary qualification or two years relevant work experience. Course is under review in 2015 and may be subject to change.	H615	1 FT or PT equivalent	B X	T1	\$22 760	—
Master of Health Promotion Admission requirements: A bachelor's degree in any discipline or two years relevant work experience. Course is under review in 2015 and may be subject to change.	H759	2 FT or PT equivalent	B X	T1	\$22 760	—

Continued on next page...

COURSES AT DEAKIN

CONTINUED

Melbourne Burwood Campus	B	T1 = Trimester 1
Geelong Waterfront Campus	WF	T2 = Trimester 2
Geelong Warrnambool Campus	WP	T3 = Trimester 3
Warrnambool Campus	WB	FT = Full time
Cloud (online)	X	PT = Part time

	CODE	YEARS FULL TIME [#]	CAMPUS	TRIMESTER INTAKE OPTIONS [^]	2016 FULL FEE-PAYING COST [*]	2015 INDICATIVE CSP COST [*]
Coursework (continued)						
Public health						
Graduate Certificate of Public Health Nutrition Admission requirements: A bachelor's degree with major studies in nutrition; or Graduate Certificate of Human Nutrition (H511); or eligibility for membership to the Dietitians Association of Australia (DAA).	H517	1 PT	X	T1, T2	\$12 000	–
Master of Public Health Admission requirements: A bachelor's degree in any discipline or two years relevant work experience. This course is also offered through the Institute of Koorie Education, which uses community-based delivery.	H757	2 FT or PT equivalent	B X	T1, T2	\$22 760	–
Social work						
Master of Social Work Admission requirements: A bachelor's degree with two units in human behaviour and two units in study of society. This course is also offered through the Institute of Koorie Education, which uses community-based delivery.	H703	2 FT or PT equivalent	X [†]	T1	\$21 000	\$6152
Optometry						
Bachelor of Vision Science/Master of Optometry Admission requirements: For students commencing in 2015 onwards, information will be available in the 2016 online VTAC Guide.	D302	3.5	WP	T1	–	\$9043
Master of Optometry Admission requirements: Bachelor of Vision Science, or equivalent, with an emphasis on an adequate coverage of vision sciences and students demonstrating the required level of clinical skills.	H710	1.5 (accelerated program)	WP	T1	\$38 000	–
Research						
Bachelor of Exercise and Sport Science (Honours)	H442	1	B		–	\$6806
Bachelor of Health Sciences (Honours)	H400	1	B		–	\$8768
Bachelor of Public Health and Health Promotion (Honours)	H412	1	B		–	\$8768
Master of Applied Science	H817	1–2	B WF X		–	–
Master of Arts	H830	1–2	B WP WF X		–	–
Master of Applied Science	H831	1–2	B WF X		–	–
Master of Applied Science	H842	1–2	B WP WF X		–	–
Master of Social Work (Research)	H803	1–2	WF X		–	–
Doctor of Philosophy	H930	3–4	B WP X		–	–
Doctor of Philosophy	H910 H940	3–4	B WP WF X		–	–

Information correct at July 2015. Deakin University reserves the right to alter, amend or delete course offerings and other information listed.

^{*} Fees quoted are for Australian domestic students and are based on a typical enrolment in one year of full-time study. They should be used as a guide only and are subject to change.
Fee-Paying Place (FPP): 2016 annual course fees for FPPs are set, as shown in the FPP column. These are based on an annual full-time study load, regardless of your unit selection.
Commonwealth Supported Place (CSP): The CSP rates shown in the CSP column are indicative 2015 annual course fees. CSP fees are indicative because they are calculated based on your unit selection. 2016 indicative CSP course fees will be available in late 2015 pending the outcome of the Commonwealth Government's proposed fee deregulation and reforms – please visit deakin.edu.au/fees for the most up-to-date information.

[^] Most courses start in Trimester 1 (March to June). This column indicates whether you have the option of commencing your studies in Trimester 2 (July to October) or Trimester 3 (November to February).
Not all units are offered in every trimester.

[#] Course lengths may vary in response to requirements within the Australian Qualifications Framework. Applicants should refer to the handbook for the latest information, deakin.edu.au/handbook.

[†] This course is offered via cloud (online) learning, however, there are significant fieldwork placement and campus requirements.



**FIND
OUT
MORE**

Talk to us

For all general enquiries,
phone 1300 DEGREE (1300 334 733)
or email myfuture@deakin.edu.au.

Go online

Deakin on the web contains detailed
information on everything at Deakin,
deakin.edu.au.

Connect with us



facebook.com/DeakinUniversity



twitter.com/Deakin



youtube.com/user/DeakinUniversity

Visit us

For information on Deakin's
postgraduate information events,
visit deakin.edu.au/deakin-events.

Further reading

Download our range of study
area booklets and course guides
at deakin.edu.au/course-guides.

deakin.edu.au

For information on upcoming events and activities please visit **deakin.edu.au/deakin-events**

Published by Deakin University in July 2015. While the information published in this guide was accurate at the time of publication, Deakin University reserves the right to alter, amend or delete details of course offerings and other information published here. For the most up-to-date course information please view our website at **deakin.edu.au**.

Deakin University CRICOS Provider Code: 00113B 1502

