

***Research***

***Education***



***Professional Practice***

## **The Deakin University / DHS - BSWR Partnership**

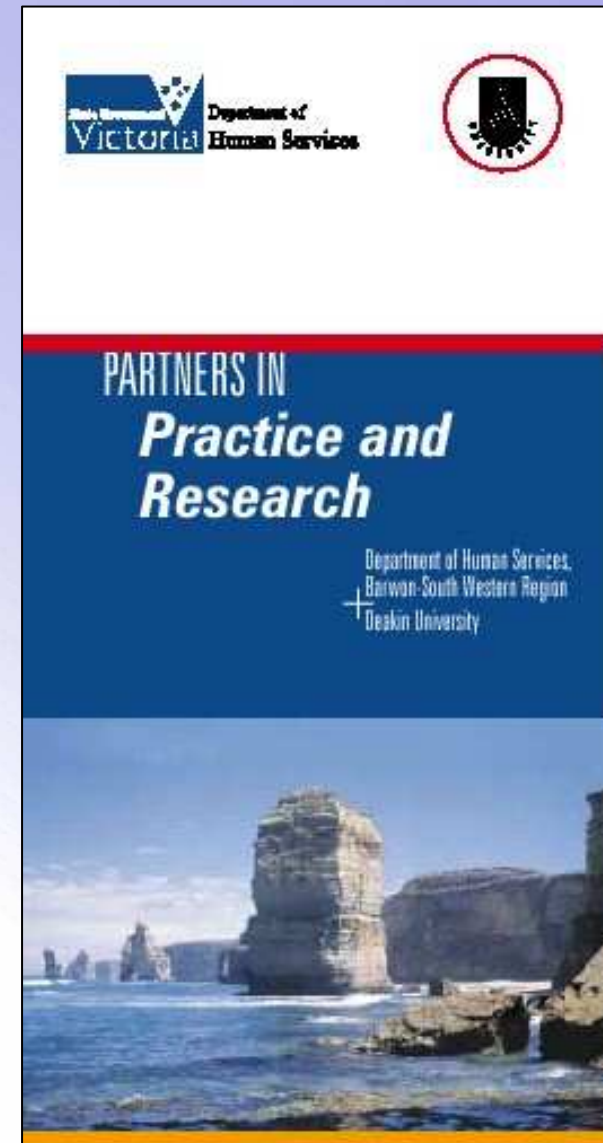
***Promoting community capacity through university-  
community engagement***

# Partnership launched 1999

## Objectives

- Collaborate on research programs
- Advance BSWR rural health issues
- Respond to local issues
- Undertake research and education in practical context of local issues
- Establish effective communication

[www.deakin.edu.au/dhs](http://www.deakin.edu.au/dhs)



# Key achievements 1999-2006

- Regional Nutrition Strategy & Network
- WHO Sentinel Site for Obesity Prevention
- Undergraduate and post graduate placements
- Joint research projects
- Evaluation of health, housing and community service programs
- Developed resources
- Quarterly regional public health forums
- 2003 Victorian Public Health Award for excellence and innovation

# Recommendations from 2006 Review

- Develop three-year business plan (2007-10)
- Re-structure governance arrangements
- Engage whole of Faculty
- Streamline student placements
- Engage other faculties/schools
- Systematic monitoring and evaluation

# Theoretical Frameworks

[www.deakin.edu.au/dhs](http://www.deakin.edu.au/dhs)

# Healthy Cities and Communities



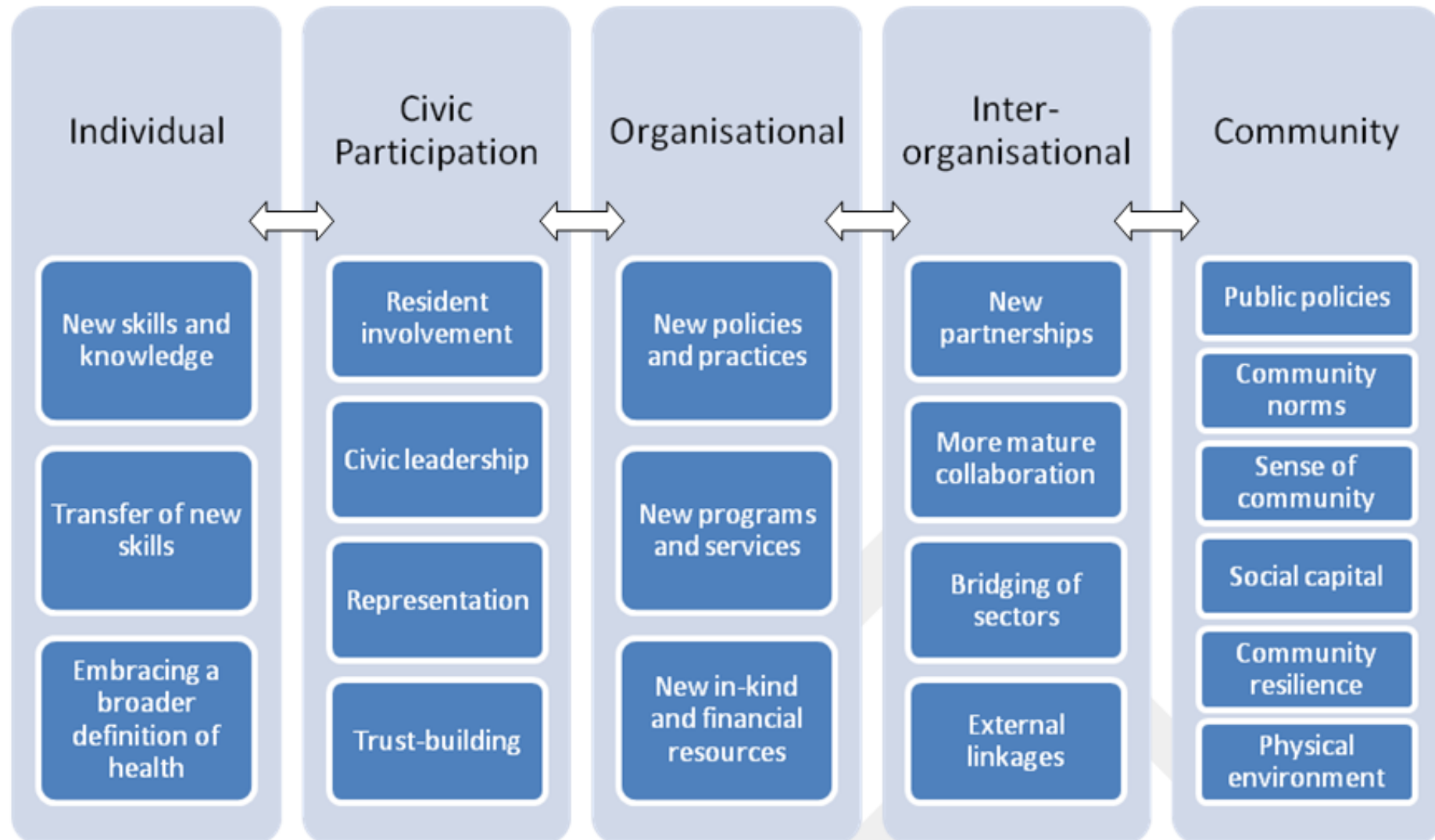
Trevor Hancock, 1993, Health Promotion International, Vol. 8, No. 1

# Community Capacity

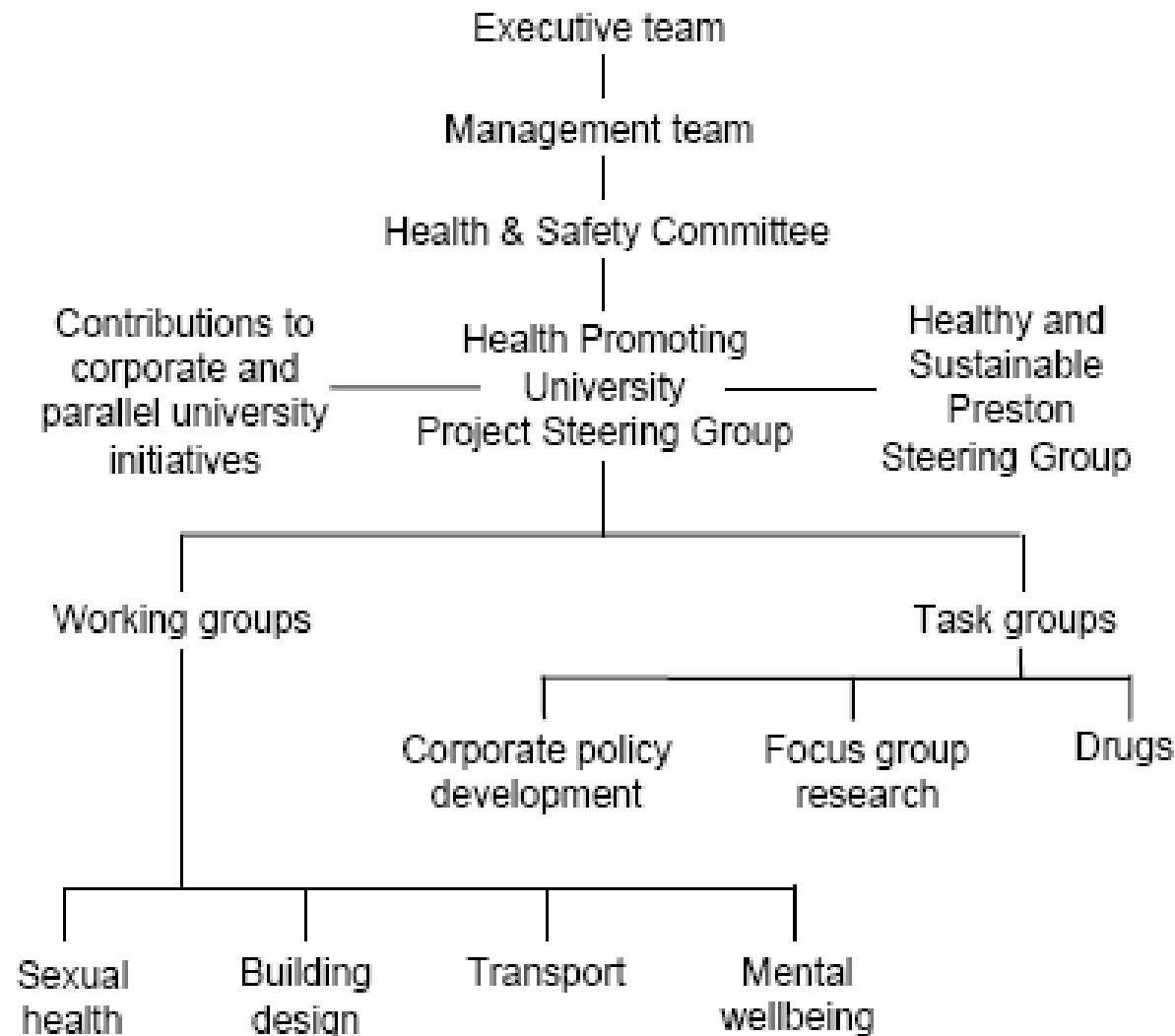
**‘Characteristics of a community that enable it to mobilize, identify and solve community problems’**

**(Goodman et al., cited in Kegler, Norton & Aronson, 2003, p.3).**

# Community Capacity Framework



# Health-Promoting Universities



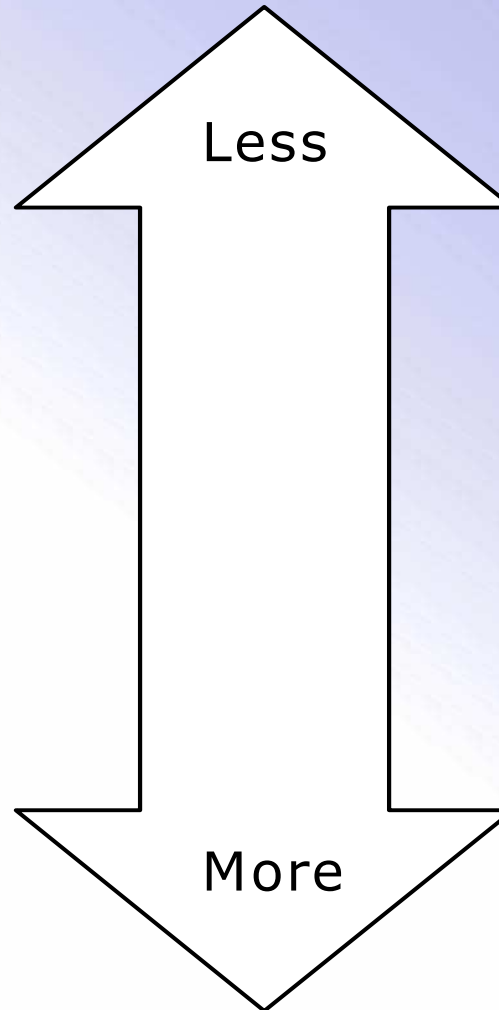
[www.ueakim.edu.au/uns](http://www.ueakim.edu.au/uns)

(Dooris, 1998, p. 108)

# VicHealth Partnership Continuum

## Continuum based on:

- Commitment
- Change required
- Risk involved
- Levels of interdependence
- Power
- Trust
- Willingness to Share turf



**Networking**

**Coordinating**

**Cooperating**

**Collaborating**

# Business Plan 2007–2010

for the

Deakin University  
+ Department of Human Services  
(Barwon-South Western Region)

Partnership



# Notable achievements since 2006

- Launch of three-year Business Plan
- Complete restructuring of governance of Partnership
- Partnership now administered from within Faculty Office – works across whole Faculty
- New Project Officer role
- New website

# Notable achievements since 2006

- Creation of Human Services Major
- DHS personnel teaching into Human Services Major
- DHS / DPCD personnel teaching into Architecture and Building degree
- Student Placement Protocol
- Primary Care Partnerships leading the delivery of Public Health Forums

# Deakin+DHS Partnership personnel have engaged with a range of ....

- Deakin directorates
- Faculties and Schools
- DHS program areas
- Government organisations
- Local Councils
- NGOs
- Service providers
- Education institutions

Deakin+DHS Partnership personnel  
have engaged with a range of ....

- Deakin Directorates
  - Vice Chancellor's Office
  - Pro Vice Chancellor (Rural & Regional)
  - PVC (Development)'s Office – Marketing
  - Division of Student Life
  - Deakin Jobshop

# Deakin+DHS Partnership personnel have engaged with a range of ....

- Faculties
  - Arts & Education
  - Science & Technology
  - Business & Law
  - Health, Medicine Nursing and Behavioural Sciences
    - Faculty Research Administrator
    - Media
    - IT
    - Manager Collaborative Programs and Research
    - Associate Dean (Partnerships & Development)

Deakin+DHS Partnership personnel  
have engaged with a range of ....

## **Schools**

- History, Heritage & Society
- Education
- Architecture & Building
- Psychology
- Business
- Health & Social Development
- Exercise & Nutrition Sciences
- Nursing

Deakin+DHS Partnership personnel  
have engaged with a range of ....

- DHS Regional program areas
  - HR
  - Public Health
  - Housing / Neighbourhood Renewal
  - Health & Aged Care
- DHS Central Office

# Deakin+DHS Partnership personnel have engaged with a range of ....

- Government organisations
  - DPCD
    - Armstrong Creek
    - Regional Managers' Forum
  - Dept Education and Early Childhood Development
  - Regional Development Victoria

# Deakin+DHS Partnership personnel have engaged with a range of ....

- Local Councils
  - City of Greater Geelong
  - Surf Coast Shire

# Deakin+DHS Partnership personnel have engaged with a range of ....

- NGOs
  - Corio-Norlane Development Advisory Board
  - G21

# Deakin+DHS Partnership personnel have engaged with a range of ....

- Service providers
  - Barwon Health
  - Primary Care Partnerships x 3
  - St Lawrence

# Deakin+DHS Partnership personnel have engaged with a range of ....

- Education institutions
  - Gordon TAFE
  - Primary Schools in Corio-Norlane