



Deakin Engagement and Access Program (DEAP)

What is the Deakin Engagement and Access Program?

As part of its commitment to Student Access and Equity, Deakin University has developed **university-school partnerships** that **build the attainment and aspirations of young people for higher education**, engaging and encouraging students to consider university as a viable and exciting pathway to achieving their goals and dreams.

DEAP partnerships have now been developed with 40 secondary schools in Melbourne, Werribee, Geelong and the Western District. Partnering schools participate in a **range of activities** developed in consultation with school staff.

The Deakin Engagement and Access Program also assists schools to engage with the University's various Faculties and Divisions in order to support students as they make the transition to university.

Why do we need this Program?

A student from a high socio-economic background is currently three times more likely to attend university than a student from a low socio-economic background.¹ In response to these statistics, the Commonwealth Government has set a target that 20 per cent of domestic undergraduate university students will be from a low socio-economic background by 2020.¹

Students from metropolitan areas are twice as likely as students from rural and regional areas to participate in higher education.² The Victorian Government is aiming for a five per cent increase in the proportion of higher education undergraduate enrolments by students from low SES backgrounds living in regional areas by 2020.³

Deakin Engagement and Access Program partnerships aim to reduce these educational inequities and positively contribute to achieving each the government's targets.

What are the Program objectives?

The objectives of the Deakin Engagement and Access Program are to:

- Raise **attainment and aspirations**, inspiring students to both consider, and access, university as a viable pathway.
- **Engage parents** to encourage and support student aspirations and attainment.
- **Familiarise students** with university life and pathways to university, including VTAC's Special Entry Access Scheme (SEAS).
- **Support schools** to prepare students for the transition to university.
- Build Deakin University's profile as a leader in the provision of **accessible and equitable education**.



How was the DEAP developed?

The Metropolitan Access Program (MAP) and Regional Engagement Access Program (REAP) were established in 2007-2008 after extensive consultation with school Principals, local councils and University staff. DEAP is a participatory program that reflects the combined expertise of schools, government and the University in community engagement towards increasing young people's life chances through education.

What are the DEAP activities?

DEAP partners commit to a multi-faceted range of activities and are also invited to work with Deakin to develop and pilot specific activities for cohorts, as identified by the school. The program caters primarily to Year 8–12 students and will include the following in 2012:

- Year 8 – Study Skills workshop
- Year 9 - Academic Enrichment – discipline specific; in school and/or on University campus; supported by academic staff or honours/PhD students
- Year 10 - Deakin Experience Day (including academic tasters)
- Year 11 - Study Skills Seminar
- Year 12- VTAC's Special Entry Access Scheme (SEAS) & Scholarships Workshops
- Year 11-12 Deakin Achievement Awards
- across years – myth busting parental engagement sessions
- school alumni connections – supporting schools to connect their past students studying at Deakin University with their current students to inspire and encourage.

What do students say about the program after attending an on campus Deakin Experience Day?

"I control my own future." - Year 11 student

"Desire is the main ingredient for success in life." - Year 10 student

"It's not about the chances you get in life, but the choices you make that determine your future." - Year 10 student

Which schools can participate?

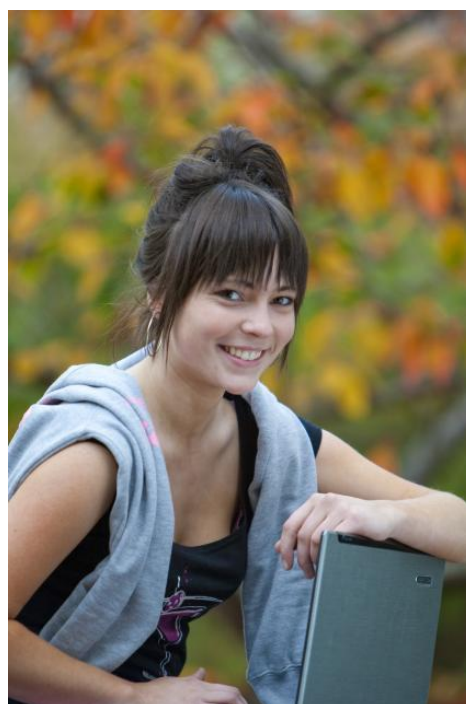
Individual schools have been selected on the basis of meeting a number of the following criteria arising from Commonwealth policy and international best practice, as well as excellence in school leadership and commitment to partnerships:

- **low articulation to university** by students (indicated by inclusion on the University's Under-Represented Schools List⁴)
- **low socio-economic** student catchment (indicated by geo-coded collection districts)
- **proximity to a Deakin University Campus.**

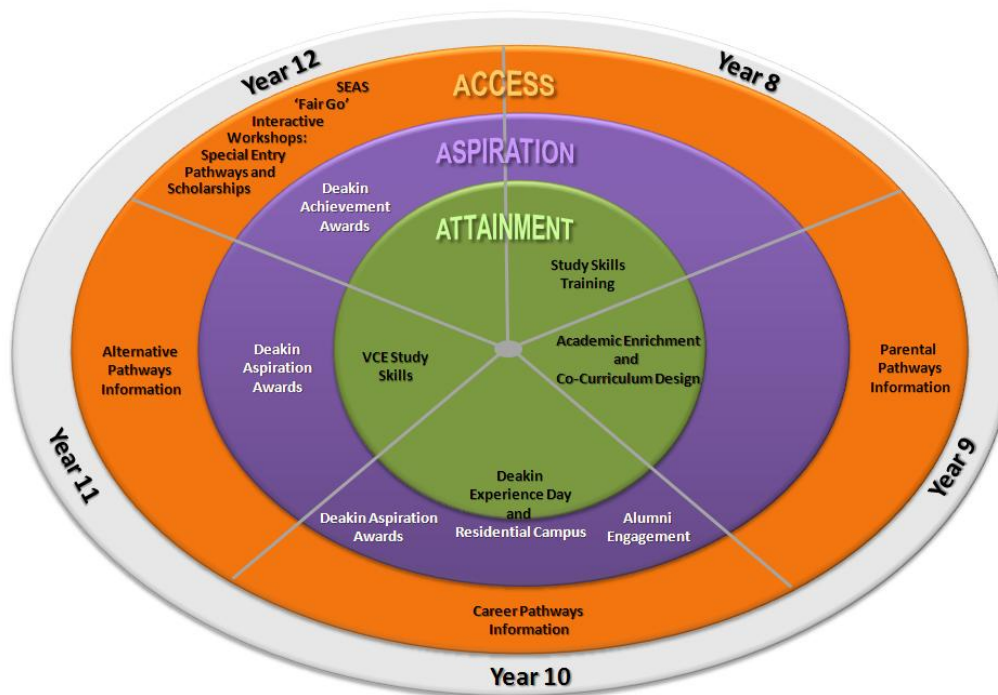
What do Principals say about the Program?

'Emerald Secondary College has been thrilled to be part of Deakin University's Engagement and Access Program. It has greatly enhanced our students' awareness of the options available at Deakin University, including opportunities available through Access and Equity Programs. I have no doubt that more of our students will be aware of the benefits of attending university and take up the various pathways as a result of Deakin's Access and Equity Programs.'

*Emerald Secondary College Principal
Wayne Burgess*



Deakin Engagement and Access Program (DEAP) 2012



DEAP Partner School Communities

City of Casey

- Cranbourne
- Hallam
- Lyndhurst

Cardinia Shire

- Emerald

Greater Dandenong

- Noble Park North
- Dandenong
- Keysborough
- Dandenong North

Frankston City Council

- Carrum Downs
- Langwarrin

Hobsons Bay

- Newport and Altona North
- Laverton

City of Hume

- Broadmeadows

Maroondah City Council

- Croydon

Shire of Melton

- Melton

City of Whitehorse

- Forest Hill

Wyndham City Council

- Werribee
- Hoppers Crossing

Shire of Yarra Ranges

- Lilydale
- Upper Yarra

City of Greater Geelong

- Drysdale
- Geelong
- Grovedale
- Lara
- Newcomb
- Corio and Norlane
- North Geelong
- Hamlyn Heights

Regional locations

- Apollo Bay
- Camperdown
- Colac
- Portland
- Warrnambool



Deakin University's commitment to equity

Deakin University's Strategic Plan places a strong emphasis on partnerships.⁷

One of Deakin University's six core commitments is to improve equity and access for individuals and groups who might not otherwise enjoy the benefits that flow from participation in higher education. The University's Strategic Plan includes the following equity and access goal:

'To champion higher education equity and access in the broader community; to be an exemplar of an inclusive organisation committed to the principles of social justice and fair treatment of its members; and to ensure that Deakin's teaching, research and services address the diversity of the Australian and Deakin University communities and enable all staff and students to realise their potential irrespective of background or personal circumstances.'

Deakin University has also made a commitment to regional engagement in its Strategic Plan:

'To advance the interests and aspirations of communities in rural and regional Australia, with a particular emphasis on Geelong and Western Victoria, by developing distinctive, lasting and mutually beneficial education, research, economic, social and cultural partnerships, and by providing knowledge, expertise and resources that will contribute to the life of those communities.'

Supporting higher educational equity also makes good business sense because it ensures that we attract and retain the best students and staff, it greatly enriches university culture, and it improves educational and employment outcomes.

DEAP Information and Contacts

Website: www.deakin.edu.au/equity

Manager, Student Access & Equity

Dr Jennifer Oriel

p: 03 9251 7112

e: jennifer.oriel@deakin.edu.au

Melbourne Burwood Campus

Ms Belinda Lees

p: 03 9244 6047

e: belinda.lees@deakin.edu.au

Mr Andrew Newhouse

p: 03 9251 7378

e: andrew.newhouse@deakin.edu.au

Geelong (Waurm Ponds & Waterfront) and Warrnambool Campuses

Ms Kerry Tucker

p: 03 5227 8098

e: kerry.tucker@deakin.edu.au

Ms Michelle Graham

p: 03 5227 8846

e: michelle.graham@deakin.edu.au



References

1. DEEWR (2010). Higher Education Participation and Partnerships Program (HEPPP) Guidelines. Commonwealth of Australia.
2. Deakin University (2009). Equity and Access Functional Area Plan. Deakin University, Melbourne.
3. Department of Innovation, Industry and Regional Development (2010). Report advising on the development of the Victorian Tertiary Education Plan. Skills Victoria, Melbourne.
4. The under-represented schools list is available on the Deakin University web site.
5. Census of Population and Housing: Socio-Economic Indexes for Areas (SEIFA), 2006. Australian Bureau of Statistics, Canberra.
6. Australian Standard Geographical Classification (ASGC), 2009. Australian Bureau of Statistics, Canberra.
7. Deakin University (2008). Deakin University Strategic Plan 2008–2012: *Delivering Effective Partnerships*. Deakin University, Melbourne.