



UNIVERSITY LIFE

INFORMATION FOR PARENTS

Innovative, career-focussed courses, flexible study options, fantastic locations and outstanding support are just some of the reasons why a Deakin degree is the right choice for your child.

HOW IS UNIVERSITY DIFFERENT FROM SECONDARY SCHOOL?

	School	TAFE	University
Contact hours	30	25–35	8–25
Length	Normally 6 years (VCE 2 years)	6 months to 2 years	3–6 years depending on your choice of course
Class structure	25 students, 1 teacher per subject	Classes and workshops, 12–20 students, one teacher per subject	Lectures, up to 700 people
Tutorials and practicals		Dependant on course	15–30 people, one subject teacher (tutor) complementary to lectures
Qualifications	VCE or VCAL or IB	Certificate I, II, III, IV, diploma, advanced diploma	Bachelors degree (can lead to honours, masters, PhD)
Teachers	Secondary school teachers	Industry trained, industry professionals, teachers	Academics, researchers, industry professionals
Cost	Fee per school	Determined fee cost based on prior learning (less for health care card holders) per year	\$4300–\$9100 per year of study, however eligible students may obtain a loan

COSTS, FINANCIAL ASSISTANCE AND SCHOLARSHIPS

Prospective students need to take into account course fees, text books, transport and living expenses when preparing for university study. However there are a number of financial support options available at Deakin and from the Commonwealth Government to assist your child.

Tuition costs for Commonwealth Supported Place (CSP) students

Depending on the course, an Australian Commonwealth supported undergraduate student at Deakin in 2011 can expect to pay between \$4355 and \$9080 per year of study.

Please note: these costs were relevant for 2011 students and may change in 2012 and beyond.

Eligible students may obtain loans via the Higher Education Contribution Scheme – Higher Education Loan Program (HECS-HELP). Repayments are made through the Australian taxation system once annual income exceeds the minimum threshold for repayment. Alternatively, eligible students can pay their contribution upfront and receive a discount.

For more information on fees, please visit deakin.edu.au/fees.

General costs

Other costs to consider include living costs and course-related expenses such as computer equipment, books, field trips and special equipment or clothing. The Deakin University Student Gateway offers a very useful interactive budget planner for students to manage their everyday income and expenditure:

deakin.edu.au/current-students/services/student-loans/budget/index.php.

Course overview and admission requirements

The Graduate Certificate of Chartered Accounting Foundations (GCCAF) has been developed to meet the requirements of the Institute of Chartered Accountants in Australia. It is designed for individuals who hold a non-accounting bachelor degree and wish to pursue a career in chartered accounting. The course is supported by the Institute and will enable students to acquire a basic grounding in financial accounting, management accounting, finance, taxation, audit and corporations law. The Institute's GradDipCA is available in Australia, Singapore and Malaysia only.

Financial assistance and scholarships

Financial support to help cover study-related expenses is available to eligible students. Further information about Student Loans and Emergency Loans for Fees is available online, or by contacting a Student Loan Officer at your campus. See deakin.edu.au/current-students/services/student-loans/std-and-emergency.php.

Deakin also offers a range of generous scholarships for students from recognised equity groups to support them in their studies at the University. Find out more about scholarships at Deakin at deakin.edu.au/scholarships.

BENEFITS OF A UNIVERSITY DEGREE

Graduate attributes

All Deakin programs will encourage students to develop skills that are easily transferable to the workforce. These include:

- » critical analysis, problem solving, and creative thinking
- » communicating effectively and appropriately in a range of contexts
- » developing, planning and managing independent work
- » working effectively as part of a team.

Career outcomes

Employers value the knowledge and skills developed at university, so a degree can open many doors. Deakin University offers the *My Course My Career* portal, which is full of course-relevant career information. When developing a career plan, students need to understand what is happening in their industry. This portal aims to give students new ideas about where their career may lead.

PATHWAYS TO DEAKIN UNIVERSITY

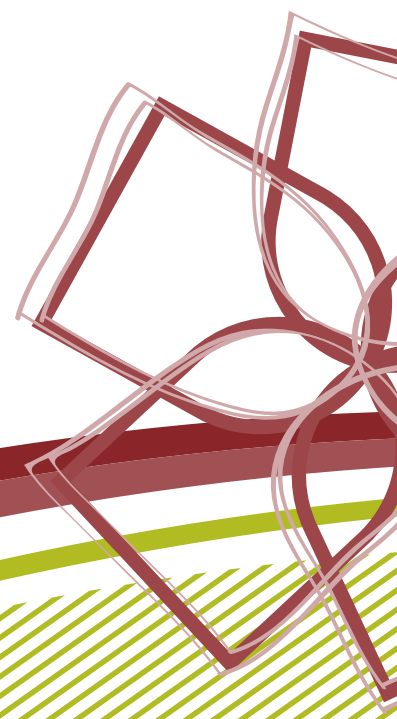
There are plenty of pathways to help students get into a Deakin degree and, once they commence their studies, there are many opportunities students can pursue. There are also many pathways to consider after completing an undergraduate course such as joining the workforce, pursuing a postgraduate degree or choosing to do honours.

Pathways into an undergraduate degree at Deakin include:

- » Year 12 – deakin.edu.au/future-students/year12/index.php
- » TAFE – deakin.edu.au/future-students/tafe/
- » Workforce – deakin.edu.au/future-students/mature-age/index.php
- » MIBT – deakin.edu.au/future-students/mibt.students/php
- » Associate Degree – deakin.edu.au/doorstep
- » Complete single unit(s)

For more information, download the *Deakin Pathways Guide*:

deakin.edu.au/future-students/brochures/pathways-guide-2012.pdf.



DEAKIN CAMPUSES

Locations

Deakin University has four campuses – one in Melbourne’s eastern suburbs, two in the port city of Geelong just south of Melbourne, and one in Warrnambool on the south-west coast of Victoria. Each has distinctive character and a strong presence in the local community.

For more information on getting to Deakin campuses, go to deakin.edu.au/visitors/getting-to-campus.php.

Support services and facilities at Deakin

There are a range of support services and facilities available to Deakin Students. Future students can access information about the following:

- » Academic support
- » Accommodation
- » Services and facilities by campus
- » Counselling and personal support
- » Careers and employment service
- » Deakin Medical Centres
- » Disability services
- » Financial assistance
- » IT @ Deakin
- » Libraries
- » Mentoring
- » Off-campus studies
- » Orientation Week
- » Personal support
- » Sport and recreation
- » Student association
- » Study skills
- » TravelSmart
- » Directory of services for Deakin students
- » International Student Advisors.

For details, go to deakin.edu.au/future-students/services-facilities/index.php.

Travel

Deakin University Travelsmart provides information on car sharing, carpooling, intercampus travel, walking, cycling and public transport, giving students a number of travel options. For more information on the many ways to get to Deakin campuses, go to deakin.edu.au/travelsmart/index.php.

FURTHER INFORMATION

Contact

e enquire@deakin.edu.au

p 1300 DEGREE (1300 334 733)

Resources

Parents’ page on the future students’ website: deakin.edu.au/future-students/parents/index.php

Parents’ newsletters: deakin.edu.au/future-students/parents/index.php

For more comprehensive information, please see the Deakin University parents’ page, including the *Parents’ Guide to University (2012)*: deakin.edu.au/future-students/parents/index.php