



Government of South Australia

Department for Families
and Communities

Taikurтинna Maltorendi

“Families to Remain Together”



Tier 3 Family Program

MAYFS - The Parks Community Centre

Co-ordinator: Sharen Letton

Taikurtinna Maltorendi

Taikurtinna is also known as the Tier 3 Aboriginal Families Program which in Kurna language is interpreted as “Families to Remain Together”, a principle aim of working with Aboriginal families.

Background:

It was identified that the high rate of homelessness amongst Indigenous families could be linked to incidence of reported child abuse / neglect. With research indicating that early intervention to families in crisis (such as those assessed to be Tier 3) can reduce the risk of homelessness to these families that can lead to further issues. Therefore, this program would access families through the child protection system as a key referral point for intervention.

Taikurtinna Maltorendi

Taikurtinna deliver that intervention and respond to the child abuse notification encouraging families to engage in the program on a voluntary basis.

The Taikurtinna Maltorendi (Tier 3 Program) is an Aboriginal- specific service designed and committed to providing a culturally accountable and appropriate child protection response by providing support and access to services for Aboriginal families who receive a 'Tier 3' child protection notification and who live in the north-west regions of Adelaide.

Taikurtinna commenced in June 2004 and was established in October 2004 staffed by an all Aboriginal Team comprising of a Coordinator (PSO 2) and two Aboriginal Family Practitioners (PSO 1).

Funded by the Department of the Premier and Cabinet through a Social Inclusion Board (SIB) Strategy in a Service Agreement with DFC, Families SA and MAYFS to develop a new approach to child protection responses and are currently funded til June 2009.

Taikurtinna Maltorendi

Referrals:

Initially **Taikurtinna** only accepted Tier 3 referrals from Families SA Enfield and Woodville District Centres, as classified/assessed under the Families SA differential response model. TM work in partnership with Families SA offices and has accepted Tier 2 referrals if the District Centre cannot engage with the family.

Tier 1 – Immediate danger (Immediate response)

Tier 2 – Primarily at risk of significant harm (Priority response)

Tier 3 – Primarily in need with low risk in the short term (Community response)

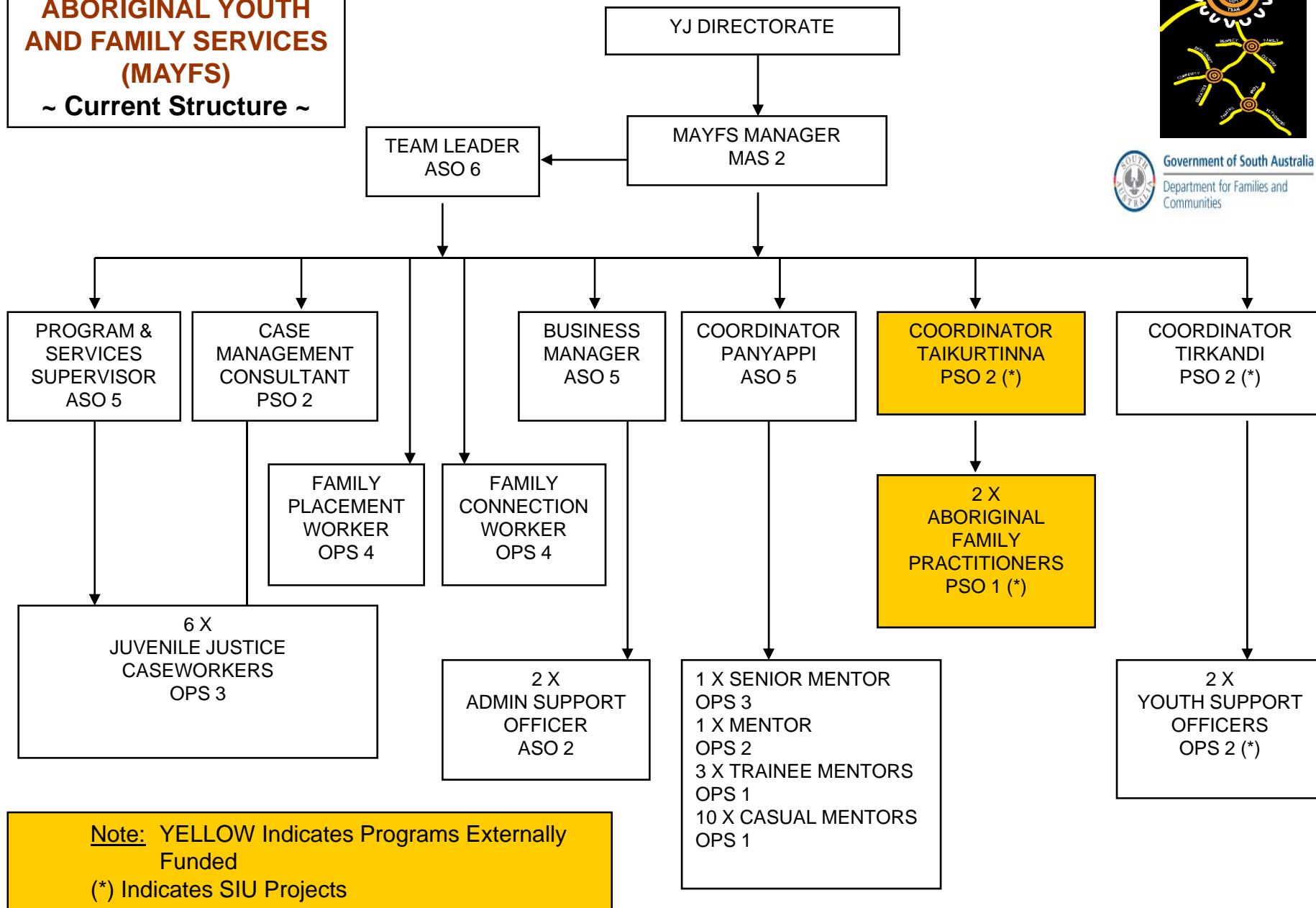
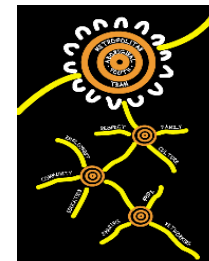
This latest service agreement now allows TM to receive referrals from Housing SA, DECS and other relevant services on vulnerable families in crisis who have had a history of Families SA involvement who live in the Charles Sturt & Port Adelaide Enfield Council areas.

Taikurтинna Maltorendi

Location:

The team are located within the Metropolitan Aboriginal Youth Team (MAYFS) based at The Parks Community Centre. The program is situated within the MAYFS structure and office, enabling the use of existing resources and expertise within the program (mentors in the Panyappi team, Youth Workers, Youth Programs) and at The Parks accessing a range of agencies and services for clients (Housing SA, Aboriginal Health Centre, Drug & Alcohol Services, Parenting Network, Strong Families Safe Babies etc)

**METROPOLITAN
ABORIGINAL YOUTH
AND FAMILY SERVICES
(MAYFS)**
~ Current Structure ~



Taikurtinna Maltorendi

Taikurtinna provide a whole of Family Case Management Service in response to the Child Protection issues raised with Families SA. The program is a community response providing a weekly Outreach Home Visiting service, aimed at supporting families, in a non-threatening, culturally accountable environment.

As an Aboriginal family support service, we provide support to children and families to help them overcome complex social issues of social by building positive, open relationships, linking them to other services both Aboriginal and non-Aboriginal to support their assessed and identified needs.

The ultimate outcome of the program is in:

Providing a sustained intervention

Culturally appropriate Community response to families

Focusing on low risk families with high needs

Providing a home-visiting / outreach service.

Taikurtinna Maltorendi

WHAT WE DO? SERVICES ON OFFER

Taikurtinna Maltorendi provides a holistic response to Aboriginal children, young people and their families that is:

- Intensive Family Case Management service catering for babies, children, young people, adults and the elderly.
- Culturally appropriate and accountable services encompassing assessment and intervention (the TM Program do not investigate families)
- Responsive and flexible.
- Home visiting outreach service.
- Based within the local Community.

Taikurтинna Maltorendi

WE AIM TO:

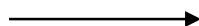
- Improve level of functioning for families
- Improve quality of life
- Facilitate independence
- Reduce risk of homelessness
- Improved safety and well being for children and young people

Taikurтинna Maltorendi

Family Inclusive Case Management Service

**Support & Access
to Services for
Aboriginal
Children, Youth &
Families**

**Culturally
Accountable
&
Appropriate
Child Protection
Response**



**Independent Living Skills/Family Goals &
Directions**

**Family & Parenting Support & Care
Arrangements**

Housing / Accommodation

Addictions / Concerns

Food & Material Assistance

Health / Medical

Legal

Education / Training & Employment

Sport, Leisure & Other Interests

Culture / Identity & Family Unification

Information about Rights and Responsibilities

Taikurtinna Maltorendi

Case Study 1

Intake relates to a 6 year old girl

Other people involved are: 38 Year old mother

Referred by: Families SA Child Abuse Report Line

Notifier: School Teacher

Presenting Problems: Neglect

Previous CIS History: There has been extensive CP history in relation to this family

Other relevant information: The child in this intake resides with her mother

Concerns listed: Notifier advised of an extreme case of head lice that are also in the child's eyebrows. Child would represent at school without the head lice being treated. Cockroaches have also been sighted in the child's school bag and concerns are held at the hygiene issues posed to the child. Child found wandering the streets. Mother presenting at school as vague & possibly under the influence of substances. Mothers mental health concerns. Child being continually late for school and missing critical literacy components and having delayed language and social skills.

Assessment by Yaitya Tirramangkotti: Concerns to be followed up as a community response by MAYFS Tier 3 Aboriginal Families Program.

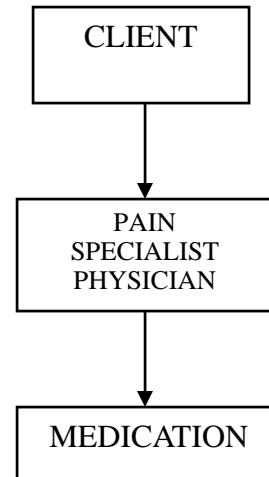
Taikurтинna Maltorendi

The family engaged immediately on contact made by the program.

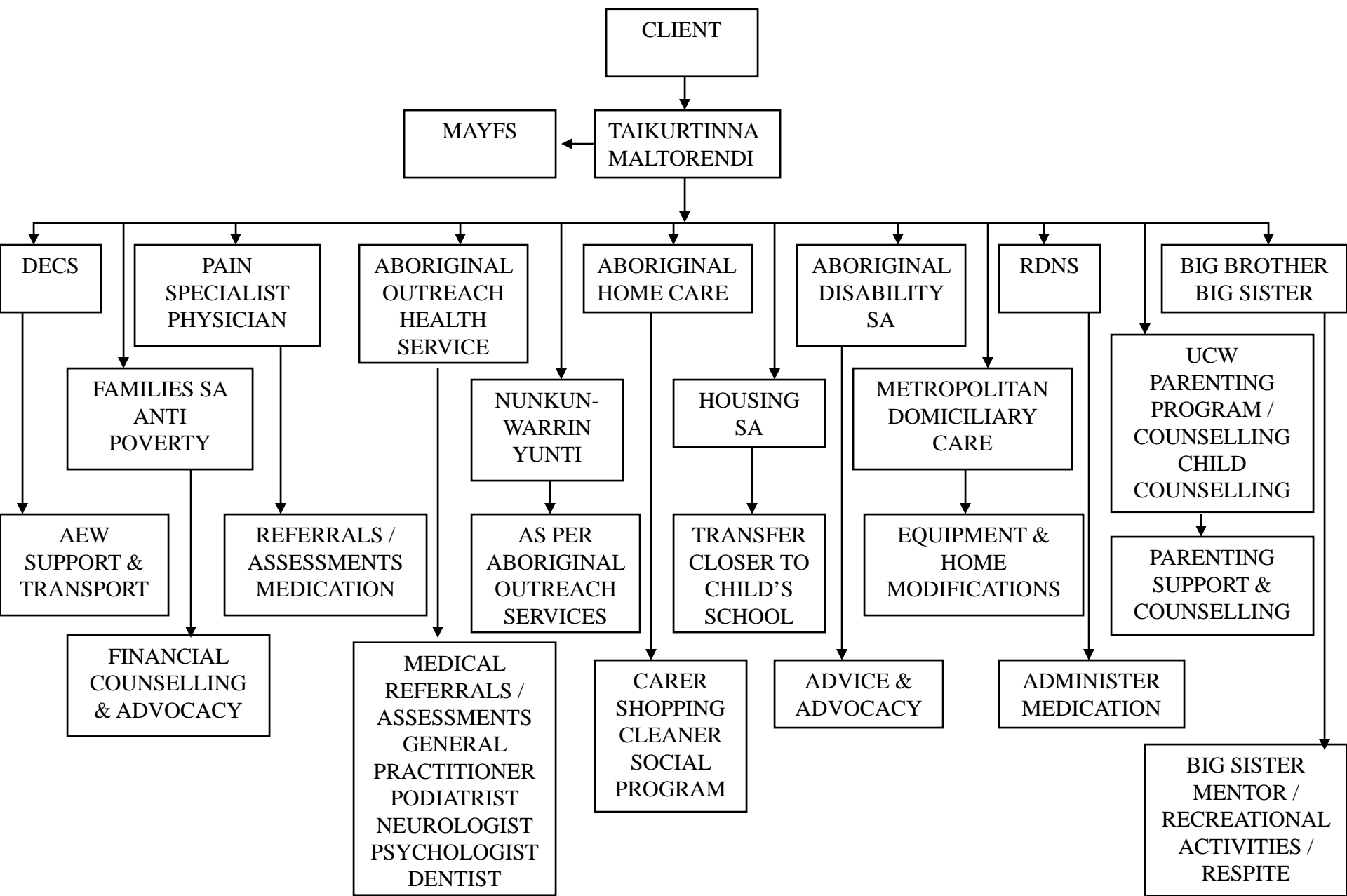
On engagement and assessment some issues facing the family were:

- The mother suffered from a painful disability and struggled to look after herself and the child.
- The mother had treated the child's hair, however due to the amount of infestation, the child needed her hair cut and mother educated re washing linen & prevention etc.
- The mother struggled to walk the distance to the school, stopping to have breaks along the way which is why the child was continuously late for school.
- The mother has been taking long term prescribed pain medication. This medication affects the mothers speech and made her appearance vague & like she was under the influence of substances.
- This medication affects the mothers ability to care for the child.
- No medical explanation or investigations had been done in regards to a diagnosis or prognosis re the mothers disability or pain, other than the prescription of pain medication which the mother was addicted too.
- The mother was unable to maintain the home at an appropriate hygienic level.

Services engaged with this family before TM Involvement:



Services Taikurtinna Maltorendi have engaged with the family:



Taikurtinna Maltorendi Partnerships:

Salvation Army Red Shield
Novita/Options

Parenting Network

Drug & Alcohol Program

Women's Information Service

Child & Family Investigation

Young Nungas Yarning

MAYFS Tutorial Centre

Aboriginal Employment Pgms

Warriapendi

Special Programs for Youth

Magill Training Centre

Aboriginal Sports Association

Child Protection Services

Tauondi College

Deaf SA

Shine SA

Place

DASSA

Women's Legal Services

Legal Rights Movement

& Community Healing

MAYFS Cultural Identity Program

Aboriginal Employment Programs

Adolescent Sexual Abuse Prevention Program

Aboriginal Home Care

Metropolitan Domiciliary Care

Strong Families Safe Babies

SAAP Services

Central Domestic Violence Svc

TWIG Program

The Parks Health Centre

Anglicare

Aboriginal Family Support Svcs

Tirkandi

Kumangka

Uniting Care Wesley

Courts

Port Youth Accommodation

Kurta Tirkandi @ TAFE SA

Big Brother Big Sister

Trace a Place

Aboriginal Disability

Housing SA

CAMHS

Nunkunwarrin Yunti

Police

Kura Yerlo

Black is Beautiful

DECS

Reconnect

Panyappi

Centacare

Boystown

Mission Australia

Aboriginal Hostels

Nunkuwarrin Yunti

Crisis Care

Guide Dogs Yarrow

St Vincent de Paul Indigenous

Centrelink

Aboriginal

Wiltenendi

Family

Dale Street Health

Gillies Plains Health

Tauondi College

Mudd Hutt Program

Taikurтинna Maltorendi

Program Outcomes & Deliverables:

Specified Outcomes:

Are to reduced numbers of children who experience long-term neglect and therefore make an early transition to homelessness

Specified Deliverables:

20 Aboriginal families provided with support per annum
(The program continually exceeds this limit)

Social Inclusion Unit Funding Allocation:

2007/2008 - \$213,000

2008/2009 - \$213,000

Taikurtinna Maltorendi

Current Status of the Program:

- Demand on the TM Service is extremely HIGH
- The program has had 226 referrals since its inception
- With 15 Families currently on the waiting list awaiting allocation
- Currently MAYFS have provided us with 1 x OPS4 Family Connections Worker who works within the TM team to help relieve some pressure on the current TM waiting list.
- All program staff are currently studying the Diploma in Statutory Child Protection which will be completed by December 2008.

Taikurтинna Maltorendi

Future Directions:

- TM are optimistic that with continued demonstration on the effectiveness of engaging and working with our families and outcomes achieved that the program will be able to secure ongoing funding and support through Families SA and the Child Protection Directorate
- TM programs will be expanded in all district service areas

Thankyou....

Questions Please:-

Taikurtinna Maltorendi
**Metropolitan Aboriginal Youth
& Family Services**

2-46 Cowan Street
ANGLE PARK 5010

(opposite the oval & speed skating
circuit)

Telephone: 8243-5733

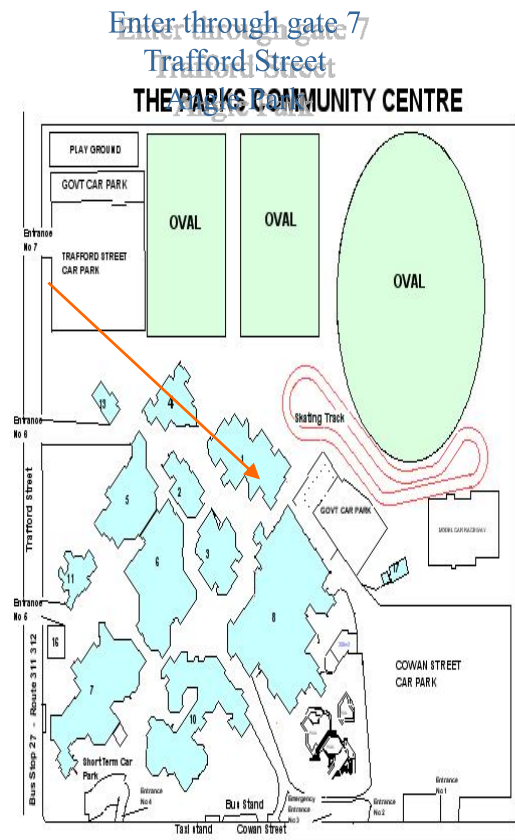
Fax: 8243-5744

Freecall: 1800-007-959

Coordinator:- Sharen Letton

Aboriginal Family Practitioners:

Jasmine Tonkin & Nat Loadsman



TENANT SCHEDULE

1. Metropolitan Aboriginal Youth Team
ISAS & Quantum Housing Association
ASK - Employment & Training Services
Parks Community IT Access Group
CYFS/SPY/ByteBack
2. Westside Community Lawyers
Networks SA - Aboriginal Resource & Management Support Unit
3. DASC - Drug & Alcohol Services
SAHT Training
Taking Realities
Brain Injury Options Coordination Uni SA & Julia Farr
Mediation Service
Various Children's Services
4. SAHT Parks Regional Office
5. Parks Health & Dental Services
6. Library / Community Space
Facilities Administration & Management
Justice Strategy Unit
Office of North West
Community Renewal Project
Victims Support Services
7. Art/Craft Complex
Strong Families Safe Babies Program
8. Sports & Fitness Centre
Grounds & Maintenance
10. Pt Adel Enfield Council Administration
Theatre, Art & Function Complex
Youth & Children Services
Creche
Security / Cafeteria
11. Child Care & Parenting Svcs
13. SA Soccer Federation
16. CYFS - ByteBack
17. Mud Hut & Model Car Racing Track



Government of South Australia

Department for Families
and Communities

Taikurтинna Maltorendi

“Families to Remain Together”



Tier 3 Family Program

MAYFS - The Parks Community Centre

Co-ordinator: Sharen Letton