

# The Dream Catchers

## LEARNING KIT



# THE DREAM CATCHERS LEARNING KIT

- Designed for pre-school and lower primary students
- Incorporating Aboriginal learning styles
- Including Art, English, Aboriginal Studies, Problem Solving, Lateral Thinking and Design



## Created by Louise Lynch

- Indigenous teacher with Corrective Services
- Member of the Campbelltown Aboriginal Advisory Council
- Lecturer - University Western Sydney

# What the Dream Catchers kit contains:

- A message from the four artists
- Teachers notes on the following:
  - What the border on the mural represents
  - What the totems on the mural represents
- Questions designed to engage the children to participate in art, dance, music, oral communication, numeracy and most importantly lots of fun
- Flash cards on the following animals:
  - The Big Red
  - The Bream Fish
  - The Echidna
  - The Red Bellied Black Snake
  - The Goanna
  - The Turtle
  - The Emu

# A MESSAGE FROM THE FOUR ARTISTS



---

## *REMEMBER!*

Always look around you as you may catch your dream.  
You just have to look, listen and never give up.  
Good luck catching your dreams

# A MESSAGE FROM THE FOUR ARTISTS



Sidney Hoskins

I originally come from the North Coast of N.S.W. from a place called Coffs Harbour. My tribal area is Gumbainggir however; my grandmother raised me with the Bundjalung tribe.

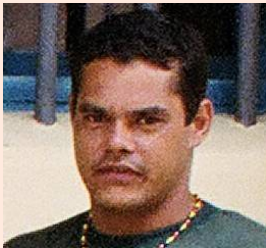
Donald Donovan

I come from the mid north coast of N.S.W in a little place called Kempsey.  
My tribe is Dunngatti.



William Swan

I originally come from a place in N.S.W. called Moree. My tribe is called Kamilaroi Warriors. Never forget that you each have a special gift to dream. The animals that you are looking at are Totem's from different tribes and they have been passed down from one Elder to another Elder. Who knows? in your future you may be the Elder that passes on the stories that we have presented to you.

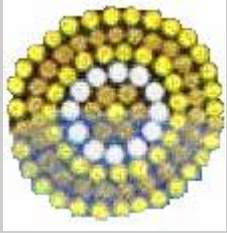


Christopher Ryan

I am originally from Dubbo; however I was brought up in 'uptown' Doonside.  
My tribal area is Dharrak.



# THE BORDER ON THE MURAL



The circles of dots around the mural represent the different Aboriginal camp sites.

The lines of dots around the painting represent the communication between the different tribes.



# THE TOTEMS ON THE MURAL



Each totem represents the different tribes and boundaries related to that area. In this mural the totems are the different animals.

# Questions for the kids

1. How many totems are in this mural?
2. How many Aboriginal camp sites can you see?
3. What do you think the father and son are looking at?
4. Can you name some of the things that; the different tribes would have talked about?
5. Name one totem that is your favourite animal and; tell the class why you like that animal.
6. Can you hop like the Big Red Kangaroo?
7. Can you walk like the Emu?
8. Can you run like a Goanna?
9. Can you swim like a fish?
10. Can you dig like a Turtle when they lay the eggs?
11. Can you slide like a Snake?
12. Can you eat like the Porcupine?
13. Can you make the sounds of the different animals?
14. What food do the different animals like to eat?

# THE BIG RED

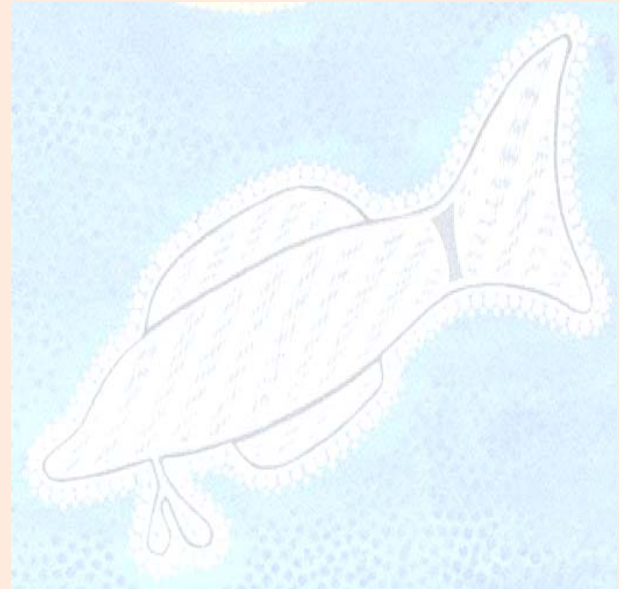
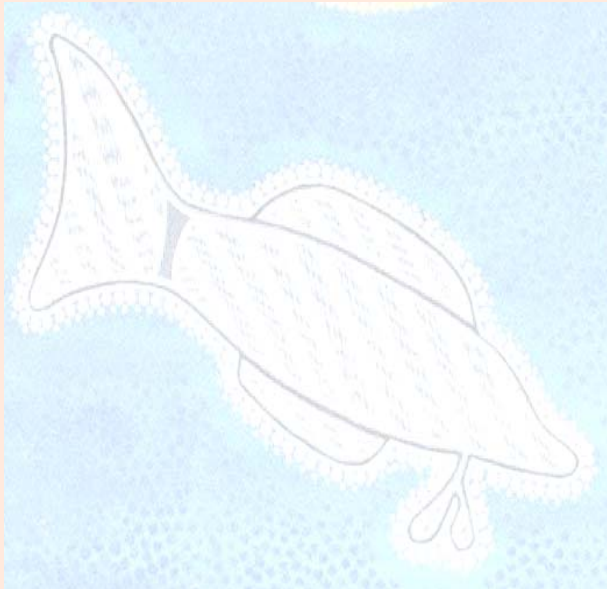


He is the strongest of the land animals because his tail is powerful for leaping and hopping in the air. The green dots around the Big Red represent the grass that he eats and loves.



# THE BREAM FISH

- The Bream Fish is found all around Australia in fresh and salt water.
- It is one of the main diets of all Aboriginal people.
- The blue dots represent the fresh and salt water that the Bream Fish lives in.
- The yellow dots around the animals represent the different tracks that they make.



# THE ECHIDNA

- We know him as the Porcupine.
- He lives in burrows of hollow logs, cool places and he loves the bush.
- The brown dots around him represent the ground he walks on.
- His favourite food is termites and ants.



# THE RED BELLIED BLACK SNAKE

- He lives along the edges of muddy water.
- The grey dots around the Red Bellied Black Snake represent the clay.



# THE GOANNA

- The Goanna lives in a burrow of logs, hollow trees and amongst the flat land.
- He has powerful legs and claws so that he can climb high trees to look for bird eggs and small prey.
- When laying its egg the Goanna digs under the ground and then will sit in the tree and watch for anyone coming within a certain distance of the eggs.
- The ochre red dots represent the outback where he lives and breeds.



# THE TURTLE

- The Turtle lives in the ocean and lays it egg in the sand.
- The ochre yellow dots around the Turtle represent the sand



# THE EMU

- The Emu is a sticky beak and with her long neck she is able to keep an eye out for goannas and snakes.
- She has long legs that make her run fast.
- She will lay her eggs in the tall grass and come back to the same spot every year.
- The grey dots represent the tall grass that she can camouflage herself in

