



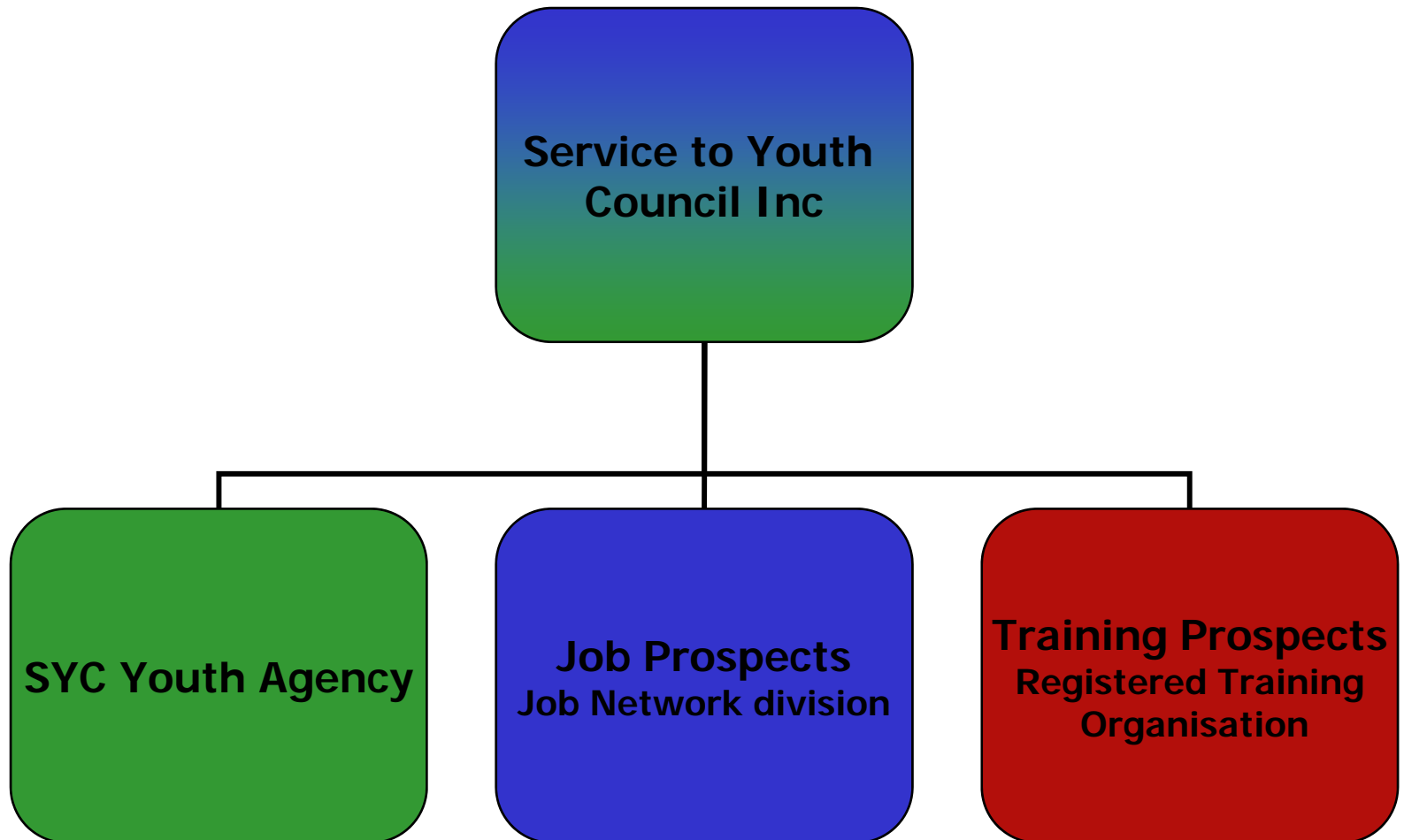
**Service to Youth Council Inc:
A social inclusion model for
young people**

Presentation Overview



1. Background information on SYC.
2. Who is excluded from our community.
3. Where are the revolving doors experienced by young people with an offending history.
4. Recommendation for social inclusion: An integrated, responsive case management approach.

Service to Youth Council Inc



Youth Agency Division: SYC



SYC's core business is helping young people achieve.

*"[its easier] just to come to one place"
(SYC Trace-A-Place client)*

Personnel

- 53 degree qualified members of staff
- 40 volunteer youth mentors

Clients

- Aged 12-25 years of age
- Experiencing homelessness or are vulnerable to becoming homeless
- High and complex needs
- At risk of not realising their full potential through having disengaged from education, vocational training and/or community supports.

SYC Services



Volunteer Youth Mentor Services

- Helping Young People Achieve

Homelessness Support Services

- Trace-A-Place®, Get-A-Place®, Cooperative Foundation Court, Murraylands Supported Accommodation Service, Street Soccer

School Retention Services

- Flexible Learning Option, Youth Pathways

Pre-Employment Services

- Job Placement Employment and Training (JPET), Personal Support Programme (PSP)

Youth Justice Services

- Juvenile Justice JPET, Pre-Release Programs, Bronzed Up©

Health and Recreation Services

- Get Rec©, Rec the North, Getting Fit

Client achievements



In 2006/07 SYC assisted 4,000 young people.

Examples of their success:

- 791 clients provided with case management support to overcome homelessness.
- 14 achieved surf life saving certifications through Bronzed Up.
 - 94% of Bronzed Up participants have not subsequently been charged with any criminal offences.
- 56% of Juvenile Justice JPET clients achieved economic outcomes.
- 2 clients selected to play for the Australian Street Soccer Team and played in the Homeless World Cup in Denmark.
- 577 clients assisted to re-engage in mainstream education.

SYC clients' views...



"[SYC] helps you when you're on the streets and have hit rock bottom"

"[Not having stable accommodation] was hard. I couldn't go to school. If I was not in a uniform I would get suspended. I got sick, physically, emotionally and mentally."

Who is excluded in South Australia?



- Youth unemployment rate: 12.7% vs. 4.8%.
- 15% increase in children and young people coming into care.
- Expenditure on child protection and out-of-home care is 35.4% less than national average.
- Resourcing of intensive family support is 82.4% less than national average.
- As at 30 June 2007, 67 young people in state care were housed in motels, cabins and apartments for a median stay 136 days, down from 86 (median stay 76 days) on 1 May 2007.
- 59.4% of young people in Northern Adelaide were participating in school on a full time basis vs. 78.5%.
- 1/3rd of all homeless people in SA are aged under 25
- 1,018 homeless school students.

Recidivism rates in SA



- Around 5% (approx 100) of male juvenile offenders will be sentenced to detention each year.
- In 2005, the average duration of a secure detention order was 23 weeks (19 weeks, 2004).
- Of the 103 young men aged 17 serving a detention order in 1999, 78% progressed to prison within 2 years of release.
- $\frac{3}{4}$ (77%) of the approx 1440 prisoners in custody have previous dealings with the juvenile justice system.
- In 2005, 967 admissions into youth detention centres; 68 admissions were young people aged 12 or under; 4 in 10 were Indigenous.
- 34% of Triple JPET clients reoffended within 6 months of release.

The exclusion of young offenders



School failure and reoffending:

- Not enrolled in school post-release
- Lower rates of literacy and numeracy
- Defunding of education options aimed at young offenders
- Not maximising day release options

The exclusion of young offenders



School failure and reoffending:

Poor school attachment, underachieving at school and school failure are risk factors for offending and social exclusion.

The exclusion of young offenders



Accommodation and reoffending:

- Limited accommodation options
- Limitations of Youth SAAP
 - Temporary
 - Waiting Lists
 - High Demand

“When you're in a shelter for one night you don't sleep. You worry about where you'll be the next night”, (Trace-A-Place client)

The exclusion of young offenders



"[Dad] hit me one day a couple of times and I stole his car... They ended up sending me back to my dad's... even though I sent a letter to the courts... and to the judge and told him what was going on... [the youth workers] knew what was going on because they got 'phone calls from the neighbours saying they heard me screaming and dad going off his head... but they just kept on giving me bail to my dad's house until I couldn't handle it no more and I just left school, I left my dad's house and it was about a week later... when I got caught for aggravated robbery"

(young male, Cavan Youth Training Centre, 2003/04)

Example of social inclusion: community approach to education



Flexible Learning Option (FLO)

- Department of Education and Children's Services, Social Inclusion Unit, Innovative Community Action Network
- Enrolment option for 13-19 year olds
- SYC FLO case management approach
 - Key elements: coordination, work across systems

Social inclusion: education



Flexible Learning Option (FLO) has changed the way enrolment funding can be used to reconnect young people with education.

- A partnership approach with DECS, ICAN, local government, community.

Social inclusion: accommodation



Trace-A-Place®: central assessment, referral and case management service into Youth Supported Accommodation Program.

- A partnership approach with SAAP, DFC and a multitude of mainstream services.

“the TAP worker knows all the options and knows what’s best for us. We’d be less stable if we self-referred – I’d run away from my problems more.” (client, 2008)

Social inclusion: youth justice



Triple JPET: Juvenile Justice Job Placement Employment and Training

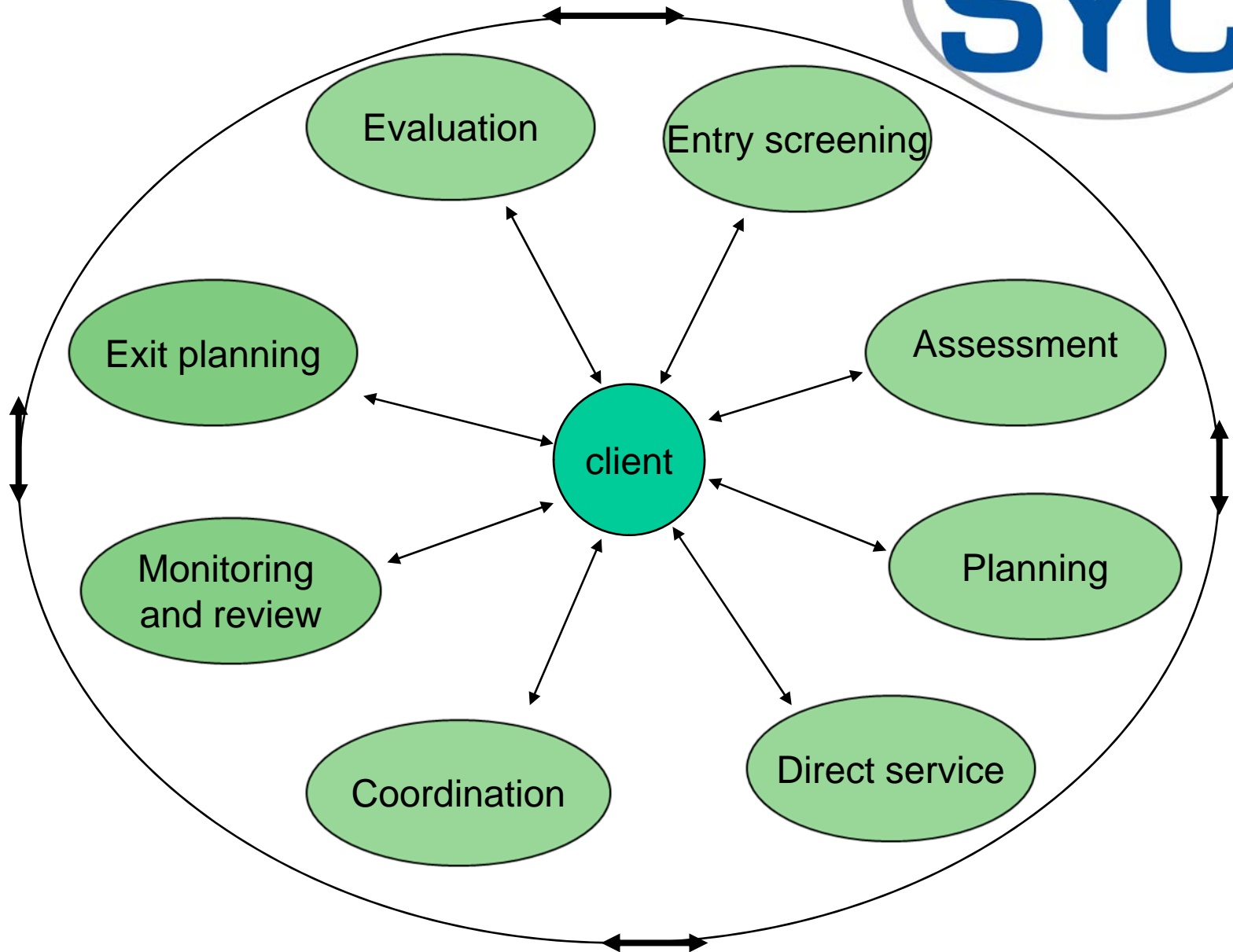
- A partnership with DECS, DFC, training providers and employment sector.
- Supports young people within detention and post release.
- Maps a positive pathway out of crime that involves education, vocational training or employment.

Proposed model for social inclusion



1. Case management to facilitate therapeutic intervention and a co-ordinated response to the underlying causes of young people's social exclusion.
2. Create a sense of belonging.
3. Integrate services to ensure consistent and seamless service provision and long term perspective.

SYC Case Management Model



Proposed model for social inclusion



2. Create a sense of belonging.
3. Integrate services to ensure consistent and seamless service provision and long term perspective.

Contact details for
more information...



www.syc.net.au

Gillian Anderson, General Manager

ganderson@syc.net.au

Ph: (08) 8211 8466

Kirsten Sandstrom, Manager Youth Justice Services

ksandstrom@syc.net.au

Ph: (08) 8211 8466

Leanne Cornell-March, Manager Homelessness Support Services

lcornell@syc.net.au

Ph: 8413 8150