

NSW Department of Corrective Services



The Intensive Learning Centre

“We must not believe the many, who say that only free people ought to be educated, but we should rather believe the philosophers who say that only the educated are free” (Epictetus).

Key objectives:



- What is the Intensive Learning Centre
- Why implemented
- Pedagogy of the ILC
- Achievement and results
- Recommendations

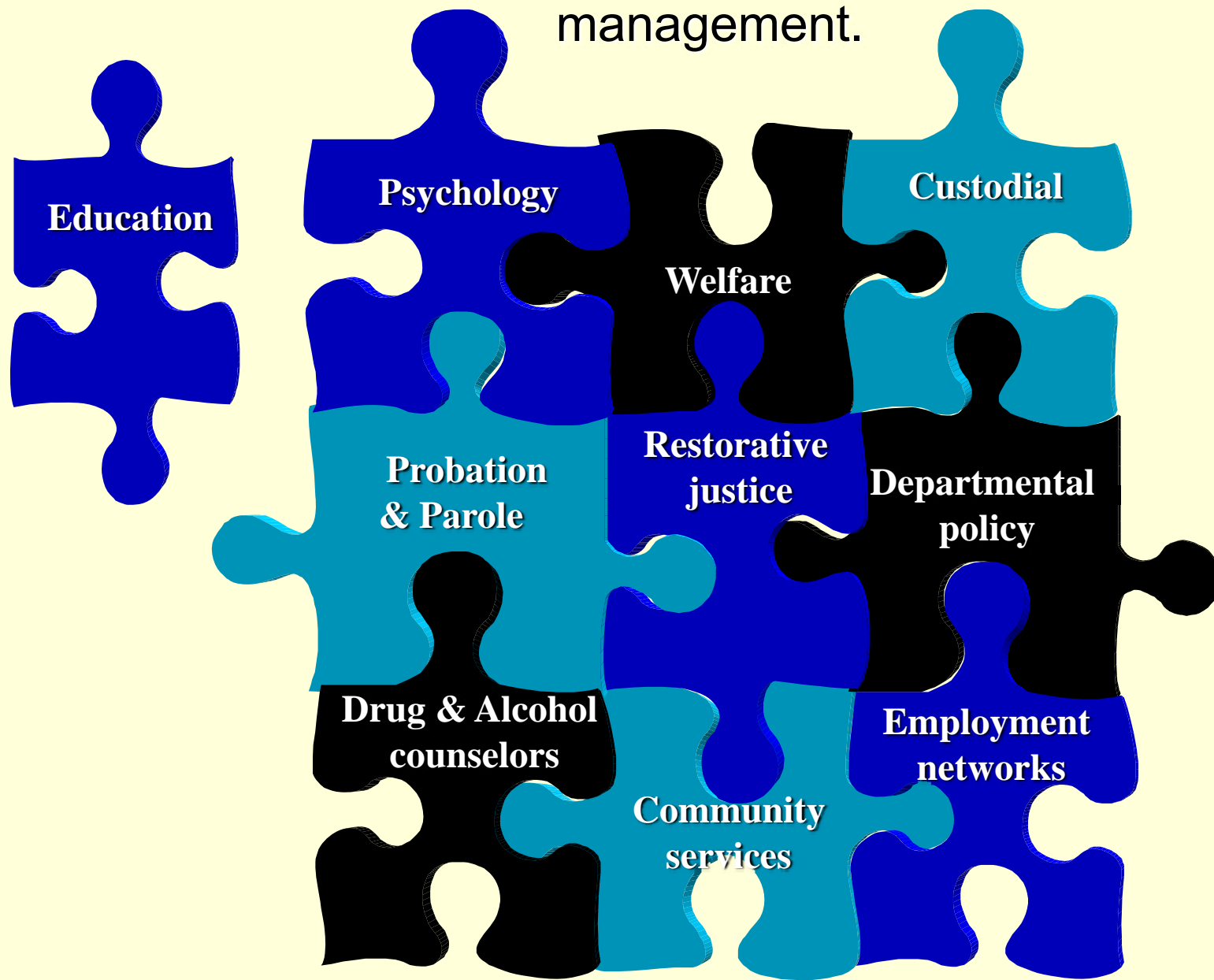
The Intensive Learning Centre

The ILC is located in Western Sydney at the John Morony Correctional centre. The conception began in June 2003 with the thoughts of the NSW Commissioner for Corrective Services, Ron Woodham. The program is directed towards an adult education infrastructure, addressing the 60% (approx) of this Young Adult Offender population who have a literacy/numeracy deficit.

How is the ILC different?

- Full time education program
- Multidisciplinary – Maths, Literacy, Communications, Information technology and numerous vocational programs
- Strict selection process for inmates
- Stand alone building structure
- Program duration of 6 months - 12 months
- Caters to various academic levels
- CSI work experience component
- Paid education, commensurate with academic progress.

Each piece of the puzzle, within the rehabilitation process contributes to the bigger picture of successful inmate management.



Our Clientele – Young Adult Offenders

Generalised profile of a young adult offender:

- 18 to 24 years old
- Impulsive, emotional, poor self esteem, educational deficits, behavioural difficulties, parental neglect, sexual abuse, delinquent peer group associations, abuse of alcohol and other drugs, socially alienated etc etc

Selection process

- Literacy/numeracy levels
- Criminogenic analysis (LSIR)
- Mental health issues
- Psychologist reports
- Previous Education levels
- Vocational qualifications
- Custodial reports
- Length of sentence.

Pedagogy of the ILC

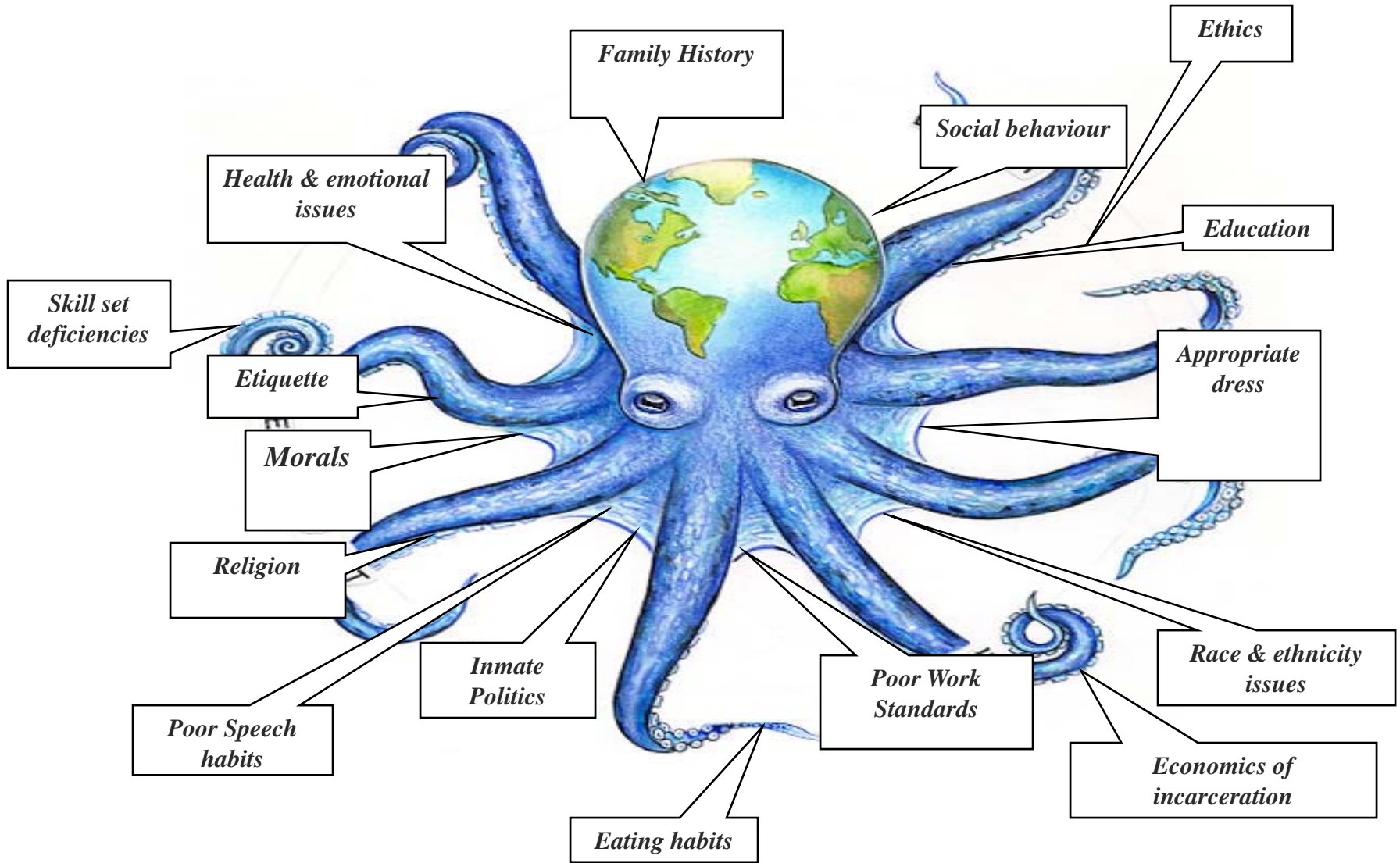
To cater to the educational needs, whilst considering and adapting to their behavioural idiosyncrasies....

Understanding their culture!

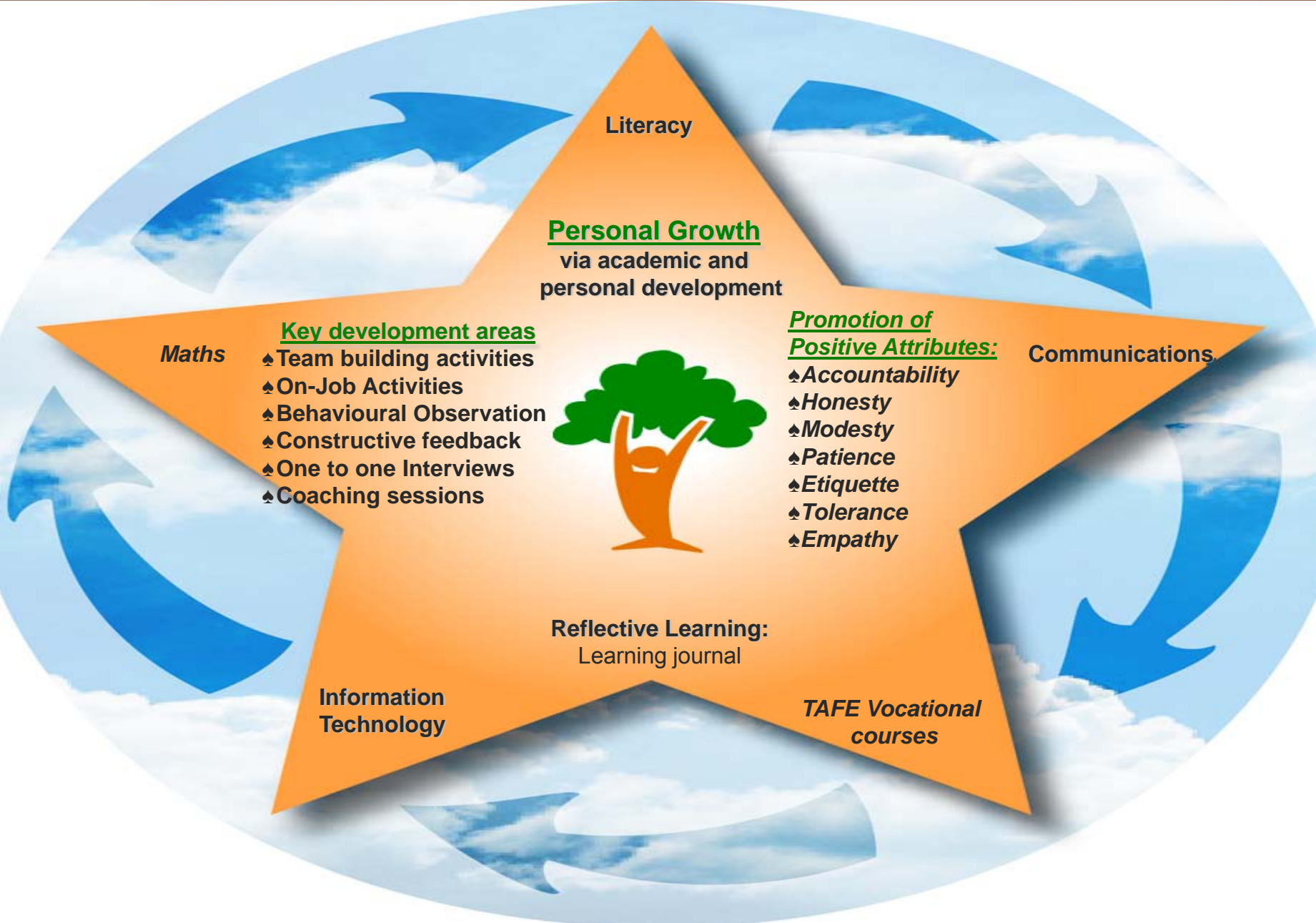
Williams defines culture as “a particular way of life, whether of a people, a period, a group, or humanity in general”

(Williams, 1976, p.90).

Visualising this demographic as a metaphorical Octopus of cultures so as to demonstrate that our interpersonal challenges are much broader than the single issue of education.



**Nationally accredited VET qualifications, accredited through AEVTI
(Adult Education and Vocational Training Institute)**



Breaking down the paradigms

Have a seat Kermit. What I'm about to tell you might come as big shock...



Read the following statements then
write them down



BIRD
IN THE
THE HAND



ONCE
IN A
A LIFETIME

We interpret messages according to our past experience

**“Experience is a marvellous thing that enables you to recognise a mistake when you make it again”
(Jones, F. P. 2008).**

Assisting students to Learn from their experiences via a Learning journal.



Verbatim; “I feel my memory is at a good stage in my life. I am headwise stronger and at a place I thought I couldn’t be. And discovering a lot about how my brain works. I have nearly come to the end of my math’s class and I have achieved a great deal and I will continue to learn after I’m finished. I am always takeing step’s to get me closer to the end and to my freedom. Lesson’s I feel will help me for the rest of my life. I am and will continue to consentrate and put my best foot forward every day! I feel I have achieved a lot more than expected”. Victor

Work Experience in Corrective Services Industries

Correctional Services Industry (CSI) philosophy states, *“The provision of inmate training and employment opportunities recognises that work, and the engagement of individuals in training and work, is a cornerstone of a successful society.* (Bearing Point, 2003).

Industry options:

- ❖ Powder Coating
- ❖ Packing Shop
- ❖ Laundry
- ❖ Grounds Maintenance
- ❖ Metal Engineering.



Addressing their work ethic....



Tackling one of Man's greatest fears...

A Formal Public Debate

- ✓ Breaking down personal inhibitions
- ✓ Improving team building skills
- ✓ Expanding vocabulary
- ✓ Research skills
- ✓ Analytical ability

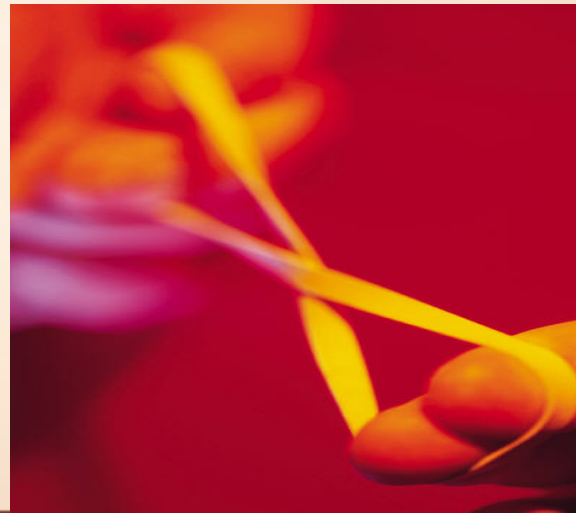


from this state of anarchy, comes the incredible jubilation and sense of self pride for overcoming a plethora of self deprecating beliefs.

A mixed bag of Educational Development

- Shakespeare analysis - Understanding Macbeth, Romeo & Juliet
- Comprehension of Pythagoras, Archimedes, Quadratic equations
- Interpersonal skills

Stretching them!





The Graduation Ceremony

危
中
機

"from crisis or danger, opportunity arises"

The Chinese symbol of change and is aptly defined as it has a dual meaning of opportunity or crisis, depending on our perspective.

Recommendations

- Ongoing evaluation of the ILC and its longitudinal effects on further education, employment, attitude and behaviour both during sentence and post release
- Further analysis of a student's ability to respond appropriately to external provocations; to determine how they manage stress and the interpersonal conflicts that are associated with this territory
- Greater involvement from The Community Restorative Centre (CRC)
- Consultative monthly meetings with all other programs staff including Psychology, thus providing collective two way data to all rehabilitation disciplines
- Explore options for Restorative Justice involvement
- Rotate facilitation staff, to broaden the skill set of employees and to have effective substitutes on hand when required
- To provide best practice self evaluation tools for students to self-appraise their behaviour, skills and personal paradigms, permitting students to initiate, discover and value a sense of *personal identity*, something that this demographic often buries deep and vehemently avoids.

As teachers we need to look beyond the obvious, the façade, the bravado and discover the underlying strengths; to follow and convey the admonition of Dean William R.Inge “the aim of education is the knowledge not of fact, but of values”.



The End

Question and Answer Period