



Help sheet:

Wireless network: Windows XP

The Deakin wireless network is a service provided for staff and students by the Information Technology Services Division (ITSD), delivering high speed mobile access for the Deakin community. Deakin's wireless network provides extensive Wi-Fi coverage across all campuses with an emphasis on all Libraries, lecture theatres and other teaching spaces. Once connected to the wireless network you can access a range of web-based services including library catalogue and database services, email and internet. Any Wi-Fi device that supports the wireless protocols 802.11n and 802.11g can connect to Deakin's wireless network.

The wireless network available to Deakin University staff and students is called 'eduroam'. The eduroam wireless service allows Deakin staff and students to access the wireless network while on any Deakin campus and while at other universities in Australia who are participants of the eduroam program. To view these universities go to

<https://wiki.aarnet.edu.au/display/eduroam/For+End+Users>. Detailed information about eduroam can be found at <http://www.aarnet.edu.au/Content.aspx?p=129>.

Deakin setup is a service which seamlessly enables staff, students and registered guests to access the eduroam wireless network on their personal device while on any Deakin campus.

On successful completion of the 'Deakin Setup' process, your device will automatically connect you to the eduroam wireless network. On returning to a Deakin campus your device will automatically search for and connect to the Deakin wireless network.

Please **do not** use Deakin Setup if you are using a Deakin University Workstation Scheme (DUWS) machine. Your workstation has been pre-configured to access the Deakin wireless network.

How do you connect to the Deakin wireless network?

In order to set up or connect to Deakin's wireless network you must be in a wireless network zone.

You can find a zone by looking for a Deakin wireless zone sign .

If you are connecting to the eduroam wireless network from another university that is a participant of the eduroam program, you'll need to start a Deakin VPN connection once connected to the network to be able to access Deakin network shares (including your home directory). See the relevant VPN guide on the ITSD Publications web site at www.deakin.edu.au/its/publications to help you set up a VPN connection.

What do you need to connect the Deakin wireless network?

Most computers and a significant number of mobile devices come with wireless networking built into them. If your device does not have wireless built in you will need a separate wireless modem to connect to the network. Consult your supplier if you are unsure if your device has wireless capability.

To connect to the eduroam wireless network on a device that is running Windows XP your computer must have:

- Windows XP with Service Pack 2
- a wireless card that supports IEEE 802.11b or g standards
- administration rights to your device

Your browser must have:

- pop ups enabled
- Java enabled / installed


Some laptops may require an update to the devices wireless driver or an update to the operating system.




One Windows XP update that may be required is the WPA2 (Wi-Fi Protected Access 2) update for Windows XP from Microsoft, downloadable from the *Operating system updates* section of the Deakin Software Library at www.deakin.edu.au/software.

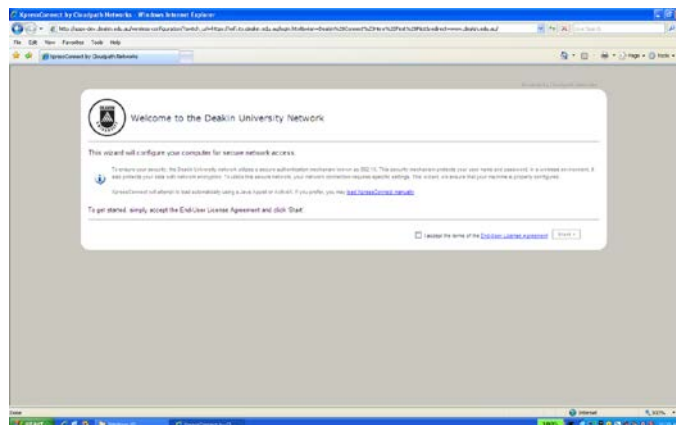
If in doubt, contact the vendor to find out the compatibility of your wireless card with 802.11 standards or refer to the wireless card manufacturer's website.

Using 'Deakin Setup' to connect your Windows XP device to the Deakin eduroam wireless network

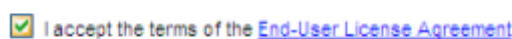
1. Click on the **wireless icon**  located at the bottom right hand corner of your screen. If the wireless icon is not displayed, click on the **Start** menu, select **Connect To** and click on **Wireless Network Connection**.
2. Click on **Deakin Setup**.
3. Click on the **Connect** button.
4. Click on the **Connect Anyway** button.

The network will acquire and connect to Deakin Setup.

5. Click the **Close** button  to shut the wireless network connection window. Connection has been established.
6. Open a web browser. Your browser will redirect you to the Deakin University network setup wizard. If your browser does not redirect automatically, you must type, www.deakin.edu.au.



7. After reading the End User License Agreement, Click the accept **Check Box**.

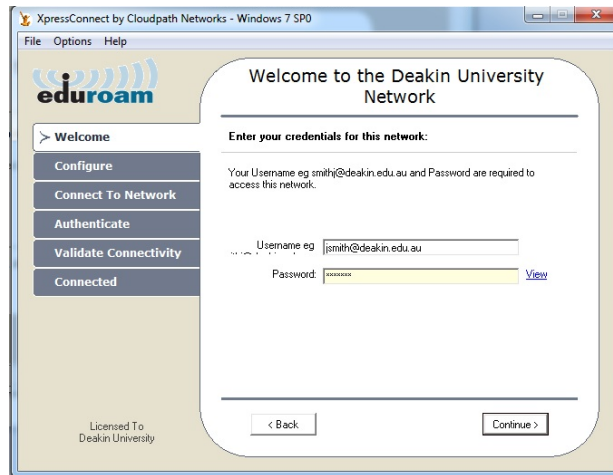


8. Click on **Start**.

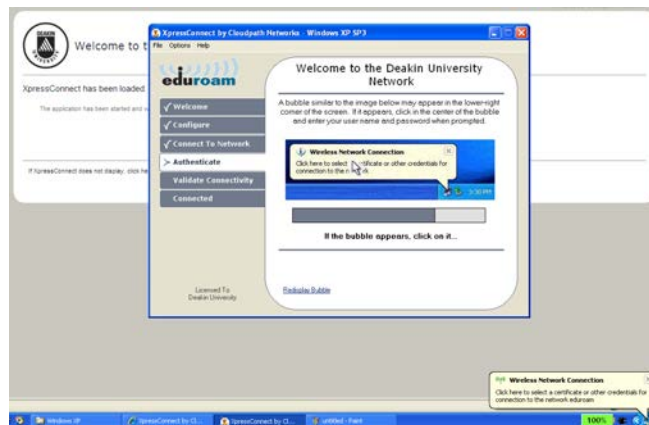




- The connection wizard will start. Enter the username of the owner of the device (e.g. `username@deakin.edu.au`). This is your username – `jsmith` not your email address – `john.smith`. You must include your institution suffix `@deakin.edu.au`.



- You may be required to authenticate again. Click on **Wireless Network Connection** bubble, bottom right.



- Enter the username of the owner of the device (e.g. `username@deakin.edu.au`). This is your username – `jsmith` not your email address – `john.smith`. You must include your institution suffix `@deakin.edu.au`.



- Click **OK**.
- You are now successfully connected to eduroam, Click **Done**.
- Eduroam is now your default wireless network connection. On returning to a Deakin campus your device will automatically connect to the wireless network using eduroam.



Note: On occasions, the Deakin Setup installation may produce a 'Syntax Error' message after you click the tick box to agree to the Terms and Conditions of the software. This is due to Java not functioning correctly for the installer to use. Simply press 'Ok' to persist past this. If this is unsuccessful, download the package to your desktop and execute, bypassing Java altogether.

Need help?

Further information on eduroam can be found at www.eduroam.edu.au/, and the Deakin wireless website located at <http://www.deakin.edu.au/services/computing/wireless/>.

More detailed information about wireless networking and eduroam can be found in the *Wireless networking (Windows)* user guide available from www.deakin.edu.au/its/publications/.

Go to the ITSD Publications website located at www.deakin.edu.au/itsd/publications/ for the latest version of this and other ITSD-published guides and help sheets.

Check out the Atomic Learning online tutorials at www.atomiclearning.com.au for assistance with a wide range of software applications. Note that there is no internet charge for accessing Atomic Learning from a Deakin network location. You can also access Atomic Learning from home, using the username and password available from the *Deakin Software Library* at www.deakin.edu.au/software/

MIBT students will need to configure their proxy settings to get access to information outside the Deakin network. Follow the *VPN: web browser configuration (Windows)* help sheet from the ITSD Publications web site located at www.deakin.edu.au/itsd/publications/

Contact the IT Service Desk for further assistance, if needed.