

Helpsheet:

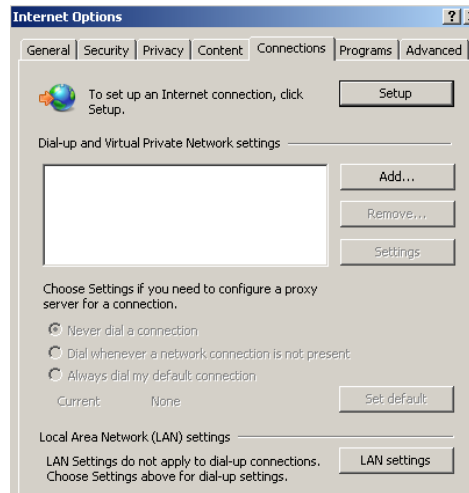
Configuring Internet Explorer for Deakin use

You will need to configure your web browser settings to work within the Deakin network whenever you connect to it (for example, when using Deakin's VPN service).

Configuring your proxy settings for connecting via Deakin

Internet Explorer needs to be running to complete the configuration steps.

1. Click on **Tools**, then **Internet Options**.
2. In the Internet Options window, click on **Connections** and then click on **LAN Settings**.



If you are connected directly to the network follow the below steps. If you are connected through VPN or a wireless connection, see the steps under **Configuring proxy settings with VPN or wireless connections**.

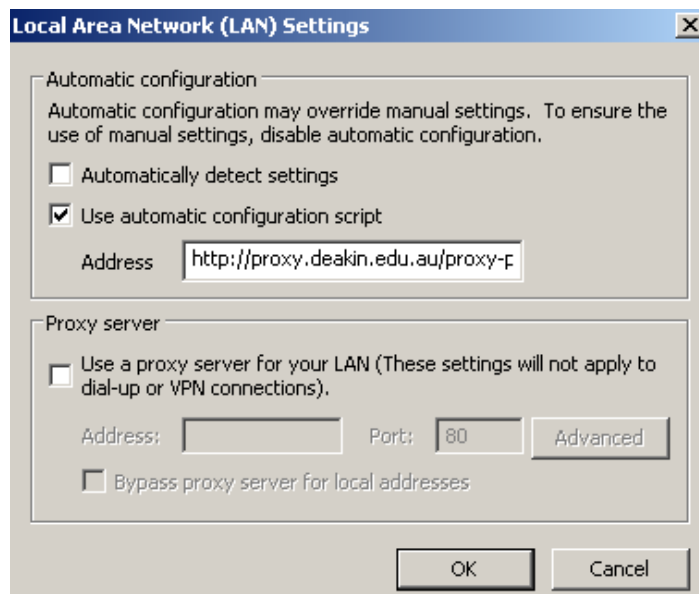
3. Under **Automatic configuration**, check the box next to **Use automatic configuration script**.
4. Click in the **Address** field.

5. Enter Deakin's proxy information.

`http://proxy.deakin.edu.au/proxy-pc.pac`

6. Click **OK** to confirm these settings.

Click **OK** again or **Cancel** to exit from the Options screen.



Configuring proxy settings with VPN or wireless connections

If you are connected through a VPN or a wireless connection, follow the below steps.

1. Click on **Tools**, then **Internet Options**. Now click on **Connections**.
2. In the box labelled "Dial-Up and Virtual Private Network settings", your wireless or VPN connection will be listed. Click on it.
3. Follow steps 3 to 6 above under "Configuring your proxy settings for connecting via Deakin".

Re-configuring your proxy settings for non-Deakin use

When you have finished accessing Deakin's network, (this includes when you have disconnected from Deakin's VPN service) you need to reset the proxy configuration on your web browser for normal ISP usage.

1. Follow steps 1 and 2 in the above configuration instructions.
2. Under "Automatic configuration" uncheck the box next to **Use automatic configuration script**.
3. Check the box next to **Automatically detect settings**.
4. Click **OK** to confirm these settings.
5. Click **OK** again or **Cancel** to exit from the Options screen.

Configuring Deakin as your homepage

If you mainly connect to Deakin University, you may wish to set up the Deakin portal as your homepage. This means it will load each time you start your web browser.

1. Click on **Tools** then **Internet Options**
2. Click on the **General** tab along the top of the window.
3. In the **Home page** field, enter the web address of the page you want to open when starting Internet Explorer.

The Deakin Portal website address is <http://www.deakin.edu.au/deakinonline>
4. Click on **Apply**.
5. Click **OK** to finish.

