

Helpsheet:

Connecting to eLive from within the Deakin network

Deakin eLive sessions can be accessed from anywhere with an internet connection providing you have a Deakin username and a password and have been invited to the session.

This helpsheet will take you through the steps required to connect to an eLive session from within Deakin's network, such as from a Phoenix workstation or laptop, a computer in the Deakin labs or a home laptop or computer connected to Deakin through a Virtual Private Network.

Browser selection

We recommend you use Mozilla Firefox. All Deakin computers have Firefox installed as the default browser. If you do not have this browser, you can download it from www.deakin.edu.au/software/internet.php

Java WebStart

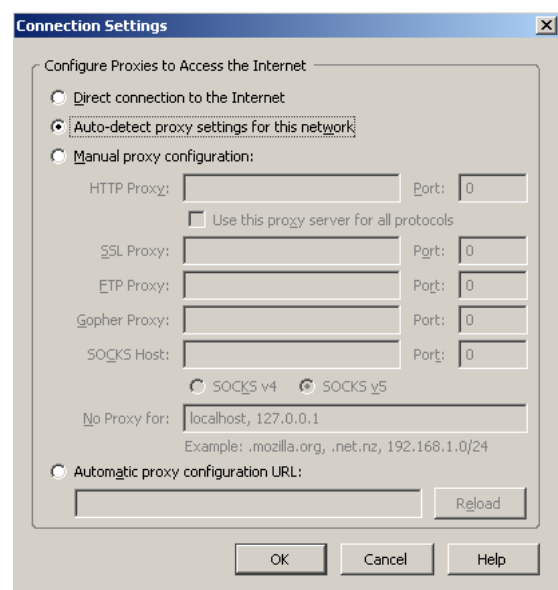
You need the correct version of Java to connect to eLive. Deakin computers have this installed already. If you don't have the correct version, it will download and install for you automatically as a 6 MB file.

Connecting to eLive

1. Your eLive session coordinator may have sent you a link to connect to your eLive session. If not, go to <http://elive.deakin.edu.au/>.
2. Log in with your Deakin username and password and select your eLive session from the list.
3. If you cannot connect, you will need to reconfigure the settings.

Configuring proxy settings in Firefox

1. Open Firefox. Select **Tools > Options**.
2. Select **Advanced** from the top right. Then click on the **Network** tab below.
3. Press **Settings**. In the Connection Settings window, select **Auto-detect proxy settings for this network**.
4. Select **OK**. Now click **OK** again to close and save the **Settings** window.
5. You may now try to load eLive from your link again. eLive will load but state it is unable to establish a connection. This is because eLive is preconfigured to not get through Deakin's firewall. Ignore this message and move on to the next step.



- Click **Cancel**. You will need to change the proxy settings by following the steps under “eLive proxy settings” below.

Which version of eLive do I have?

You will need to know which version of eLive you are using to complete the following steps.

- Select **Help**.
- Select **About...** A box will appear with the version number.



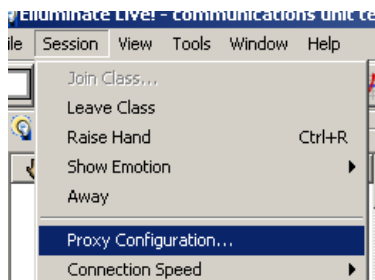
eLive proxy settings

- If you are using Elluminate 7 go to:

Session > Proxy Configuration

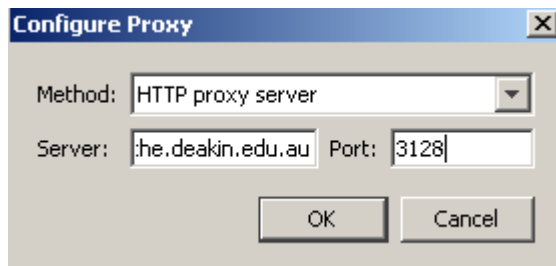
If you are using Elluminate 8 go to:

Tools > Preferences > Proxy Settings



- In the **Configure Proxy** box, complete the following settings:

Method: *HTTP Proxy Server*
Server: *cache.deakin.edu.au*
Port: *3128*



- Now reconnect to the session:

Elluminate 7
Go to: **Session > Join class**

Elluminate 8
Go to: **Session > Join session**

If you still cannot connect to the internal eLive session, contact the IT Service Desk on ext. 72400 or it-servicedesk@deakin.edu.au

Alternatively, you may call the Institute of Teaching and Learning (ITL) support on ext. 78127 or itl-tss@deakin.edu.au

How to disconnect from eLive

Once you are finished with your eLive session you should disconnect from it.

- Click on **File** at the top left corner of eLive.
- Click on **Exit**. This will close down the eLive window.
- Finally, select **Log Out** from the top right corner of the eLive webpage.