

Deakin at a Glance 2010



Summary

Students (as at end of year 2010)	
Course enrolments	39,606
Student load (EFTSL)	27,571
Course completions (2009)	8,489

Staff full-time equivalent (as at 31 March 2010)	
Full time/ fractional full time	2,539
Casual (estimate)	548

Course data (as at 22/02/2011)	
Active award courses	358

Library (quantity of materials as at end of year 2010)	
Books	1.49 Million
e-books	134,500
e-journals	78,521

Finance (2011)	
Total budgeted income	\$676 Million
Total budgeted expenditure	\$604 Million

Physical resources	
Landscape and Building replacement value (31 Dec 2010)	\$971 Million
Gross floor area (000's sq m) (March 2011)	412

- [Summary](#)
- [Preferences](#)
- [Course Enrolments](#)
- [Student Load \(EFTSL\)](#)
- [Student Outcomes](#)
- [Staff](#)
- [Research](#)
- [Finance](#)
- [Notes](#)

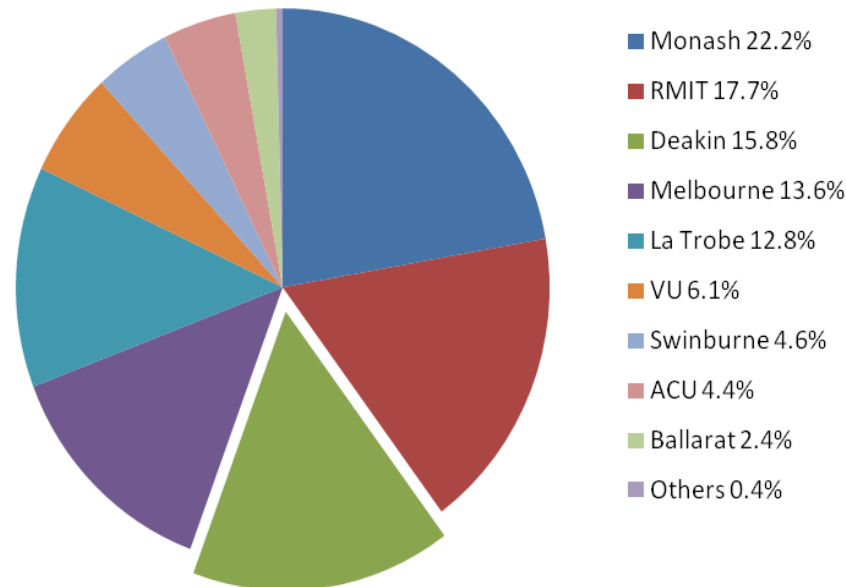


Preferences

VTAC commonwealth supported preferences

	2009	2010	2011
First preferences	10,006	11,487	10,295
Market share	16.0%	17.2%	15.8%

First preference market share



Note: This information is based on the Change of Preference Popularity Polls not including international bacalaureate changes.

- [Summary](#)
- [Preferences](#)
- [Course Enrolments](#)
- [Student Load \(EFTSL\)](#)
- [Student Outcomes](#)
- [Staff](#)
- [Research](#)
- [Finance](#)
- [Notes](#)



Course Enrolments

Summary

This section provides information about the number of enrolments at Deakin. Course enrolment numbers include some double counting of individual students who have enrolled in multiple courses throughout the year.

	2008 ¹	2009	2010
Total	37,133	37,785	39,606
Percentage change	5.7%	1.8%	4.8%

Commencing Status	2008 ¹	2009	2010
Commencing	14,114	14,420	15,415
Returning	23,019	23,365	24,191

Owning Faculty²	2008 ¹	2009	2010
Arts and Education	11,745	11,824	12,034
Business and Law	13,656	13,895	14,329
Health	6,538	6,826	7,814
Science and Technology	4,706	4,880	5,076
Cross institutional	488	360	353

Course Type Group	2008 ¹	2009	2010
Higher degree by research	880	974	1,130
Postgraduate coursework	9,782	10,567	11,267
Undergraduate	25,829	25,604	26,513
Non-award	642	640	696

[Summary](#)
[Preferences](#)
[Course Enrolments](#)
[Student Load \(EFTSL\)](#)
[Student Outcomes](#)
[Staff](#)
[Research](#)
[Finance](#)
[Notes](#)

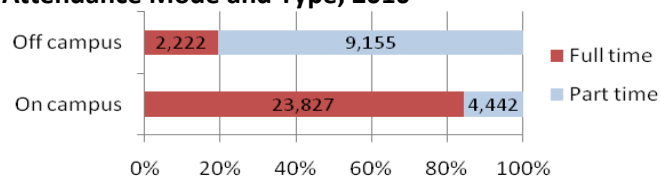


Course Enrolments

Attendance Mode and Campus ³	2008 ¹	2009	2010
<u>On Campus</u>			
Melbourne Burwood Campus	18,167	18,600	19,909
Geelong Waurin Ponds Campus	4,423	4,575	4,787
Geelong Waterfront Campus	2,080	2,181	2,320
Warrnambool Campus	1,069	1,057	1,253
Total on campus	25,740	26,413	28,269
<u>Off Campus</u>			
Off campus	10,607	10,718	11,023
Offshore partnership enrolments	786	654	314
Total off campus	11,393	11,372	11,337
Off campus as a percentage of total	(31%)	(30%)	(29%)

Attendance Type	2008 ¹	2009	2010
Full time	22,491	24,487	26,049
Part time	12,644	12,646	13,557

Attendance Mode and Type, 2010



Gender	2008 ¹	2009	2010
Female	21,595	22,126	23,530
Male	15,538	15,659	16,076

- [Summary](#)
- [Preferences](#)
- [Course Enrolments](#)
- [Student Load \(EFTSL\)](#)
- [Student Outcomes](#)
- [Staff](#)
- [Research](#)
- [Finance](#)
- [Notes](#)



Course Enrolments

Domestic

	2008 ¹	2009	2010
Total Domestic	29,456	29,825	31,099
Percentage change	4.9%	1.3%	4.3%

Gender	2008 ¹	2009	2010
Female	61.1%	61.2%	61.7%
Male	38.9%	38.8%	38.3%

Age Group	2008 ¹	2009	2010
Young people 15-19	24.6%	23.1%	22.4%
Aged 20-24	34.3%	36.1%	36.7%
Mature age 25-39	29.8%	29.3%	29.0%
Mature age 40+	11.2%	11.6%	11.9%

Equity Group (% of enrolments)	2008 ¹	2009	2010
Aboriginal & Torres Strait Islander	1.7%	1.8%	1.8%
Low socio-economic status	13.0%	12.7%	12.8%
Disability	2.7%	3.9%	4.3%
Regional	21.7%	21.8%	22.2%
Remote	0.6%	0.6%	0.6%

Note: These figures may differ slightly from official equity statistics which are subject to additional criteria

[Summary](#)
[Preferences](#)
[Course Enrolments](#)
[Student Load \(EFTSL\)](#)
[Student Outcomes](#)
[Staff](#)
[Research](#)
[Finance](#)
[Notes](#)



Course Enrolments

International

	2008 ¹	2009	2010
Total International	7,677	7,960	8,507
Percentage change	8.9%	3.7%	6.9%

Gender	2008 ¹	2009	2010
Female	46.9%	48.5%	51.1%
Male	53.1%	51.5%	48.9%

Age Group	2008 ¹	2009	2010
Young people 15–19	8.6%	8.5%	8.1%
Aged 20–24	60.9%	61.4%	62.6%
Mature age 25–39	28.0%	27.8%	27.4%
Mature age 40+	2.5%	2.3%	2.0%

Home Country (Top 8)	2008 ¹	2009	2010
China	23.6%	29.9%	39.7%
India	17.2%	15.4%	11.3%
Hong Kong	8.5%	8.2%	7.3%
Malaysia	8.5%	7.9%	5.2%
Sri Lanka	8.5%	7.0%	5.2%
Indonesia	5.3%	4.9%	4.9%
Vietnam	2.1%	3.0%	3.7%
Singapore	3.6%	2.8%	2.3%

Note: International includes students studying with offshore partners

[Summary](#)
[Preferences](#)
[Course Enrolments](#)
[Student Load \(EFTSL\)](#)
[Student Outcomes](#)
[Staff](#)
[Research](#)
[Finance](#)
[Notes](#)



Student Load (EFTSL)

Summary

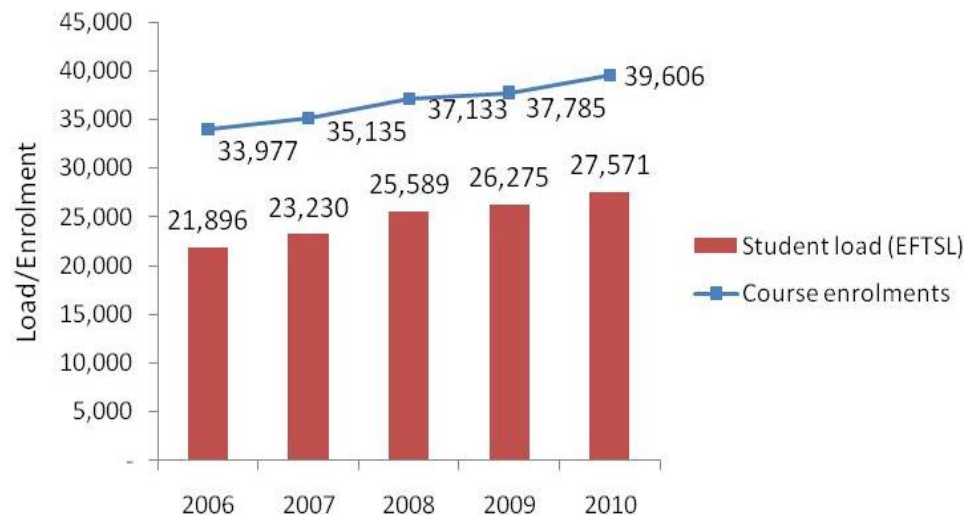
This section considers Equivalent Full Time Student Load.

	2008 ¹	2009	2010
Total	25,589	26,275	27,571
Percentage change	10.1%	2.7%	4.9%

Commencing Status	2008 ¹	2009	2010
Commencing	9,620	9,902	10,826
Returning	15,968	16,373	16,745

- [Summary](#)
- [Preferences](#)
- [Course Enrolments](#)
- [Student Load \(EFTSL\)](#)
- [Student Outcomes](#)
- [Staff](#)
- [Research](#)
- [Finance](#)
- [Notes](#)

Course enrolments and student load



Student Load (EFTSL)

Funding category	2008¹	2009	2010
Commonwealth Supported	15931.8	16856.7	17,798.9
International Fee Paying	5754.7	5951.6	6,460.0
Domestic Fee Paying	3277.0	2817.9	2,631.5
Domestic HDR	510.5	546.9	599.0
Deakin Prime	100.6	89.5	71.1
Employer Reserved (Excl. DP)	13.9	12.6	10.0
Undefined	0.3	0.1	0

Owning Faculty²	2008¹	2009	2010
Arts and Education	8,122	8,159	8,137
Business and Law	8,758	8,976	9,482
Health	4,975	5,205	5,877
Science and Technology	3,585	3,831	3,984
Cross institutional	148	105	112

Campus³	2008¹	2009	2010
Melbourne Burwood Campus	14,782	15,177	16,087
Geelong Wauran Ponds Campus	3,751	3,983	4,142
Geelong Waterfront Campus	1,786	1,870	2,002
Warrnambool Campus	903	922	1,065
Off campus	3,888	3,945	4,128
Offshore	479	378	146

[Summary](#)
[Preferences](#)
[Course Enrolments](#)
[Student Load \(EFTSL\)](#)
[Student Outcomes](#)
[Staff](#)
[Research](#)
[Finance](#)
[Notes](#)



Student Load (EFTSL)

Course Type Group	2008 ¹	2009	2010
Higher degree by research	612	701	835
Postgraduate coursework	4,221	4,640	5136
Undergraduate	20,561	20,764	21,409
Non-award	195	171	191

[Summary](#)
[Preferences](#)
[Course Enrolments](#)
[Student Load \(EFTSL\)](#)
[Student Outcomes](#)
[Staff](#)
[Research](#)
[Finance](#)
[Notes](#)

Student load (EFTSL) by course type



Student Load (EFTSL)

Domestic fee-paying

	2008 ¹	2009	2010
Total Domestic	3,277	2,818	2,631
Percentage change	21.5%	-14.0%	-6.6% ⁴

Course Type Group	2008 ¹	2009	2010
Postgraduate coursework	1,908	2,028	2,151
Undergraduate	1,295	713	383
Non-award	74	78	98

Note: From 2009, undergraduate places cannot be offered to domestic students on a fee-paying basis

Owning Faculty ²	2008 ¹	2009	2010
Arts and Education	920	819	742
Business and Law	1,579	1,326	1,138
Health	562	531	619
Science and Technology	193	116	112
Cross institutional	24	26	20

Campus ³	2008 ¹	2009	2010
Melbourne Burwood Campus	1,345	962	826
Geelong Waurin Ponds Campus	146	92	87
Geelong Waterfront Campus	141	93	85
Warrnambool Campus	21	10	11
Off campus	1,621	1,659	1,621
Offshore	3	3	1

[Summary](#)
[Preferences](#)
[Course Enrolments](#)
[Student Load \(EFTSL\)](#)
[Student Outcomes](#)
[Staff](#)
[Research](#)
[Finance](#)
[Notes](#)



Student Load (EFTSL)

International fee-paying

	2008 ¹	2009	2010
Total International	5,755	5,952	6,460
Percentage change	17.3%	3.4%	8.5%

Owning Faculty²

	2008 ¹	2009	2010
Arts and Education	611	610	492
Business and Law	3,808	3,956	4,410
Health	572	586	659
Science and Technology	672	735	829
Cross institutional	92	64	70

Campus³

	2008 ¹	2009	2010
Melbourne Burwood Campus	4 624	4 861	5,485
Geelong Waurin Ponds Campus	360	394	411
Geelong Waterfront Campus	158	181	255
Warrnambool Campus	23	23	28
Off campus	113	117	136
Offshore	476	375	145

Course Type Group

	2008 ¹	2009	2010
Higher degree by research	101	154	236
Postgraduate coursework	1,836	2,096	2,240
Undergraduate	3,700	3,611	3,892
Non-award	118	90	92

Note: International EFTSL includes load for study with offshore partners

[Summary](#)
[Preferences](#)
[Course Enrolments](#)
[Student Load \(EFTSL\)](#)
[Student Outcomes](#)
[Staff](#)
[Research](#)
[Finance](#)
[Notes](#)



Student Outcomes

Course Completions

	2008	2009	2010
Total	8,056	8,489	9,102
Percentage change	5.8%	5.4%	7.2%

Gender	2008	2009	2010
Female	4,793	5,050	5,572
Male	3,263	3,439	3,530

Responsible Faculty⁵	2008	2009	2010
Arts and Education	2,409	2,625	2,700
Business and Law	3,059	3,088	3,288
Health	1,622	1,773	1,998
Science and Technology	966	1,003	1,116

Course Type Group	2008	2009	2010
Higher degree by research	145	147	140
Higher degree by coursework	1,634	1,673	2,012
Other postgraduate	1,229	1,264	1,371
Bachelor	4,964	5,331	5,532
Other undergraduate	84	73	47

[Summary](#)
[Preferences](#)
[Course Enrolments](#)
[Student Load \(EFTSL\)](#)
[Student Outcomes](#)
[Staff](#)
[Research](#)
[Finance](#)
[Notes](#)

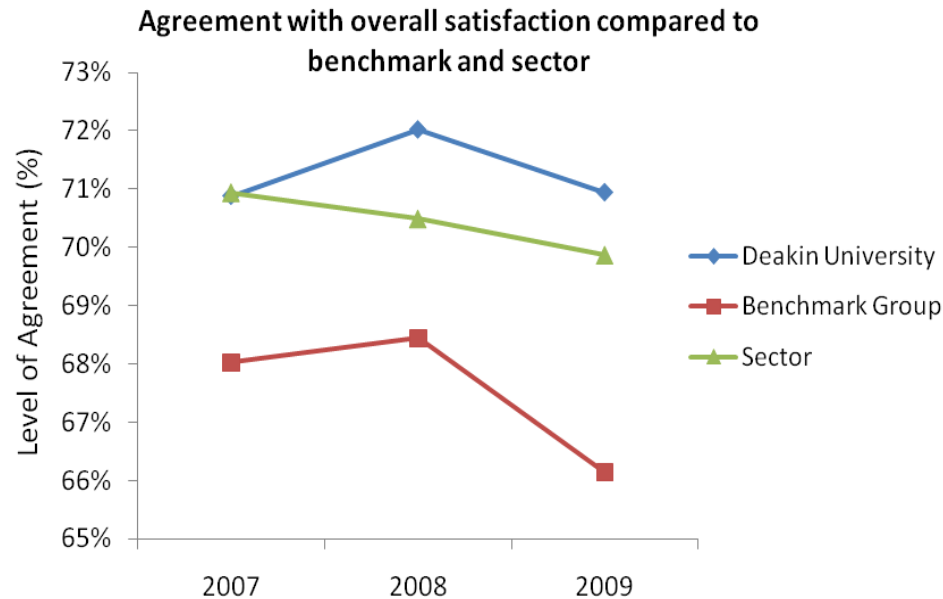


Student Outcomes

Course Experience Questionnaire

2009 Graduates (2010 AGS) Level of agreement (%)	Good Teaching	Generic Skills	Overall Satisfaction
Arts and Education	67	73	83
Business and Law	62	79	88
Health	65	78	86
Science and Technology	69	82	87

- [Summary](#)
- [Preferences](#)
- [Course Enrolments](#)
- [Student Load \(EFTSL\)](#)
- [Student Outcomes](#)
- [Staff](#)
- [Research](#)
- [Finance](#)
- [Notes](#)



Source: 2010 Institutional Performance Portfolio.



Staff (full-time equivalent)

Summary

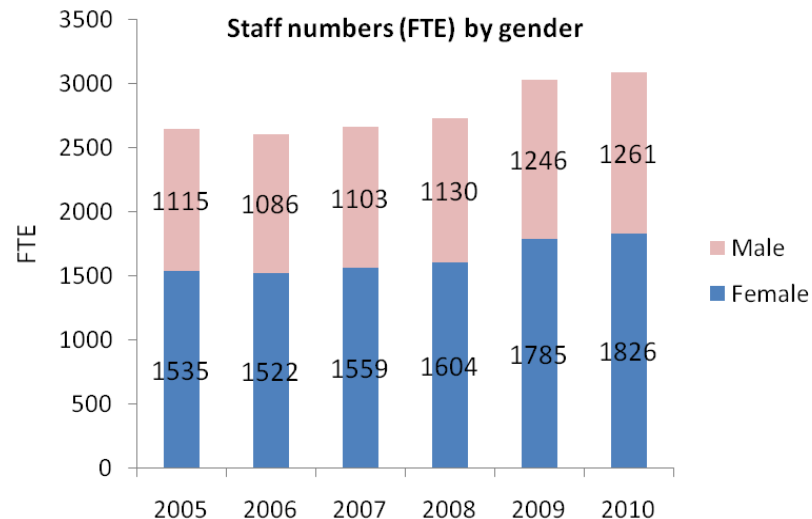
The staff data in this section is based on data report to government (see notes 6 and 7). It excludes staff in controlled entities.

	2008	2009	2010
Total	2,733	3,031	3,087
Percentage change	2.7%	10.9%	1.8%

Campus	2008	2009	2010
Melbourne Burwood Campus	1,023	1,163	1,184
Geelong Waurnd Ponds Campus	711	765	794
Geelong Waterfront Campus	379	432	433
Warrnambool Campus	125	123	126

Note: Staff figures by campus exclude casuals

[Summary](#)
[Preferences](#)
[Course Enrolments](#)
[Student Load \(EFTSL\)](#)
[Student Outcomes](#)
[Staff](#)
[Research](#)
[Finance](#)
[Notes](#)



Staff (full-time equivalent)

Staff Type	2008	2009	2010
Academic staff	1,287	1,389	1,424
General staff	1,446	1,642	1,663

General Work Contract	2008	2009	2010
Full time/fractional full time ⁶	1,293	1,425	1,446
Casual ⁷	153	217	217

Academic Work Contract	2008	2009	2010
Full time/fractional full time ⁶	945	1,058	1,093
Casual ⁷	342	331	331

Academic Classification	2008	2009	2010
Above Senior Lecturer	178	200	224
Senior Lecturer	247	263	280
Lecturer	392	471	475
Below Lecturer	470	454	445

[Summary](#)
[Preferences](#)
[Course Enrolments](#)
[Student Load \(EFTSL\)](#)
[Student Outcomes](#)
[Staff](#)
[Research](#)
[Finance](#)
[Notes](#)



Research

Student Load (EFTSL)

	2008 ¹	2009	2010
Total	612	701	835
Percentage change	-0.5%	14.6%	19.1%

Owning Faculty²	2008¹	2009	2010
Arts and Education	155	172	206
Business and Law	43	58	87
Health	182	206	236
Science and Technology	232	266	306

Campus³	2008¹	2009	2010
Melbourne Burwood Campus	269	310	369
Geelong Waurin Ponds Campus	158	200	248
Geelong Waterfront Campus	27	32	31
Warrnambool Campus	27	24	22
Off campus	130	134	164

Funding Source	2008¹	2009	2010
Domestic	510	547	599
Overseas fee-paying	101	154	236

[Summary](#)
[Preferences](#)
[Course Enrolments](#)
[Student Load \(EFTSL\)](#)
[Student Outcomes](#)
[Staff](#)
[Research](#)
[Finance](#)
[Notes](#)



Research

Higher Degree Research Completions

	2007	2008	2009
Total	137	145	147
Percentage change	16.1%	5.8%	1.4%

Faculty	2007	2008	2009
Arts and Education	43	37	34
Business and Law	9	15	15
Health	25	41	37
Science and Technology	60	52	61

Publications

Publication Category	2007	2008	2009
Authored Books weighted by 5	86.9	153.6	165.4
Chapters in Books	132.6	110.2	166.5
Refereed Journal papers	574.1	626.0	705.4
Refereed Conference papers	252.8	282.3	233.4

Note: Each item with several authors is portioned by the authors based at Deakin University.

Income Category (\$m)	2007	2008	2009
Australian Competitive Grants	11.12	10.07	10.98
Other Public Sector	5.16	9.78	19.09
Industry and Other	7.87	8.46	5.42
CRC	0.71	0.80	1.33

[Summary](#)
[Preferences](#)
[Course Enrolments](#)
[Student Load \(EFTSL\)](#)
[Student Outcomes](#)
[Staff](#)
[Research](#)
[Finance](#)
[Notes](#)



Finance

Summary

(\$'000)	2007	2008	2009
Operating income	460,790	557,210	611,372
Operating expenses	411,716	475,378	540,192
Operating result before income tax	49,074	81,832	71,180

Operating Income (\$'000)	2007	2008	2009
Commonwealth Government grants	170,227	187,270	209,668
HECS-HELP	80,601	99,185	102,473
State Government Grants	1,323	11,042	12,328
Other	208,639	259,713	286,903

Balance Sheet (\$'000)	2007	2008	2009
Current Assets	193,982	235,172	279,937
Non-Current Assets	847,694	935,182	1,064,440
Liabilities	294,175	332,293	361,980
Net Assets	747,501	838,061	982,397
Total Equity	747,501	838,061	982,397

[Summary](#)
[Preferences](#)
[Course Enrolments](#)
[Student Load \(EFTSL\)](#)
[Student Outcomes](#)
[Staff](#)
[Research](#)
[Finance](#)
[Notes](#)



Notes

For previous users of the Pocket Statistics

Deakin at a Glance course enrolment and student load figures are based on finalised end of year data. The figures in this publication are not comparable to the Pocket Statistics which were based on a mid year snapshot.

1. In 2008 Deakin transitioned to a Trimester based teaching calendar. In that year, Deakin allowed enrolments in four teaching periods (summer semester, Trimesters 1, Trimester 2 and Trimester 3).

As a typical calendar year has only three teaching periods, course enrolments and student load in 2008 are not directly comparable to course enrolments and load in other years.

2. Deakin's combined courses may be shared across two Faculties. Data presented by Owning Faculty splits the enrolments and EFTSL associated with these courses between the two owners.

3. Campus figures presented in this document take into account the student's course attempt location and their mode of study. Any student studying all units off-campus is excluded from the campus figures and shown separately under off-campus. Campus figures include students who mainly study on-campus but are undertaking some units in off-campus mode (multimodal).

4. The decline in domestic fee-paying load in recent years results from the phasing out of undergraduate fee-paying places for domestic students from 2009. Deakin continues to have some undergraduate fee-payers who commenced prior to 2009. As these student complete their studies, the load for the undergraduate cohort will continue to decline until it disappears entirely.

5. Responsible Faculty is used in the analysis of course completions to ensure that each course completion in a combined program is counted fully in one Faculty rather than split between the respective owners.

6. The Full-time staff data shown in this document is as reported to the Department of Education, Employment and Workplace Relations (DEEWR) based on a 31 March snapshot.

7. Casual staff data for 2010 is an estimate only and is based on the actual casual staff reported to DEEWR in 2009.

