

## Student Evaluation of Teaching and Units: Semester 1, 2006

### *About the survey*

Student evaluation of teaching and units for semester 1, 2006 took place between 15 May and 2 June 2006. As in previous semesters, the evaluations were conducted online for all students except for two cohorts:

- Institute of Koorie Education students received paper-based surveys
- Offshore students received paper-based survey forms via their offshore teaching partners

An advertising campaign, individual email invitations and letters posted to off-campus students were used to encourage students to complete the survey using the online evaluation system.

### *About the survey questions and scale*

The survey for semester 1, 2006 contained the same 18 questions which have been used in the survey each time since its introduction in semester 1, 2003. For each question, students were asked to choose a response on a scale of 1 (strongly disagree) to 5 (strongly agree), or to choose NA if they believed that the question did not apply to them in that unit.

Table 1: Survey questions

Questions related to teaching	
1.	The teaching staff of this unit stimulated my interest in further learning.
2.	The teaching staff of this unit motivated me to do my best work.
3.	The teaching staff gave me helpful feedback on how I was going.
4.	The teaching staff made a real effort to understand difficulties I might be having with my work.
5.	<b>This unit was well taught.</b>
6.	I had a clear idea of what was expected of me in this unit.
7.	Course materials in this unit were of a high quality.
Questions related to the unit	
8.	This unit developed my analytical skills.
9.	This unit developed my problem-solving skills.
10.	This unit developed my written communication skills.
11.	This unit developed my ability to work as a team member.
12.	I consider what I learned in this unit valuable for my future.
13.	The library learning resources were appropriate for my needs in this unit.
14.	My experience in this unit encouraged me to value perspectives of people from different cultures.
15.	The amount of work required in this unit has been appropriate.
16.	Requirements for completing assessment tasks in this unit have been clear and specific.
17.	<b>I would recommend this unit to other students.</b>
18.	<b>The use of on-line technologies in this unit enhanced my learning experience.</b>

Questions 5, 17 and 18 are used in the Council Performance Indicators. These questions are highlighted in **bold type** in the figures and tables in this report.

The results reported for this survey are for **valid** responses for each question, in which the student has chosen a response from 1 to 5. Because 'NA' and 'did not answer' responses are excluded from the results, the number of responses reported may differ for each question.

The **mean response** for each question has been calculated by adding the numerical value (on the scale 1 to 5) of each valid response and dividing by the number of valid responses for that question.

**Percentage agreement** for each question is determined from the number of responses 4 (agree) or 5 (strongly agree) as a percentage of all valid responses to that question.

### *Response rates*

Approximately 32363 responses were received from 80748 unit enrolments, giving an overall response rate of 40%. This is higher than the response rate recorded for semester 2, 2005 (32%) and semester 1, 2005 (38%).

The overall response rates for each faculty, campus, offshore status and gender are shown alongside the detailed results for these categories in Table 3.

Enrolments and responses for IKE students have been excluded from the calculation of response rate for this semester. Because IKE unit enrolments are less than 0.5% of the University total, this exclusion does not have a significant effect on the overall response rate.

### *Offshore and IKE*

Paper based surveys sent to students of Offshore Teaching Partners and students from the Institute of Koorie Education have a longer turn around time due to mail delivery and scanning processes. In order to avoid delays in data analysis and reporting to schools and faculties, completed surveys received from offshore students and students from the Institute of Koorie Education were analysed separately from the online evaluations. For this reason, the results in this report **do not**, in general, incorporate responses from offshore students; results for these students are shown only as a supplementary line item in the detailed tables (Table 3 – Table 7).

### *Results*

The overall results of the evaluation for semester 1, 2006 were notably similar to the results for semester 2, 2005. In particular:

- Each question recorded a mean response either higher or the same as semester 2, 2005.
- Each of the 18 questions recorded a mean of 3.5 or higher, and each question gained agreement from at least 54% of the students who responded.

In other results:

- Question 12 ('I consider what I learned in this unit valuable for my future') was once again the highest scoring question with a mean of 3.9.
- Questions 3,13 and 14 once again recorded the lowest scores, although each of these questions remained steady in mean response. Question 3 and 14 increased between one and three percentage points on percentage agreement compared to semester 2 of 2005.
- The number of responses received for question 18 (approximately 24 000) was once again much lower than the number of responses received for other questions (average 30, 000).

The overall University results for each question are shown in Table 2, Figure 1 and Figure 2.

Table 2: Summary of responses (all students excluding Offshore and IKE)

Q	No. of responses	Strongly disagree	Disagree	Neutral	Agree	Strongly agree	%age agreement	%age disagreement	Difference	Mean responses			
										Sem 1, 2006	Summer 2005/06	Sem 2, 2005	Sem 1, 2005
Teaching													
1	31791	5%	10%	22%	41%	23%	64%	14%	49	3.7	3.7	3.6	3.6
2	31754	4%	10%	25%	39%	21%	60%	15%	45	3.6	3.7	3.6	3.6
3	31544	6%	12%	26%	36%	20%	56%	18%	38	3.5	3.6	3.5	3.5
4	30892	5%	11%	28%	35%	21%	56%	16%	40	3.6	3.7	3.5	3.5
5	31833	5%	10%	22%	41%	22%	63%	15%	49	3.7	3.8	3.6	3.6
6	32100	5%	11%	21%	44%	20%	64%	15%	49	3.6	3.7	3.6	3.6
7	31864	3%	8%	25%	45%	20%	64%	11%	53	3.7	3.7	3.7	3.7
Units													
8	31625	3%	7%	28%	45%	17%	62%	10%	52	3.7	3.8	3.7	3.7
9	31358	3%	9%	30%	43%	16%	58%	11%	47	3.6	3.7	3.6	3.6
10	31232	3%	9%	29%	42%	17%	59%	12%	47	3.6	3.6	3.6	3.6
11	29157	4%	11%	28%	38%	19%	57%	15%	41	3.6	3.4	3.5	3.5
12	31798	3%	6%	20%	43%	29%	71%	9%	62	3.9	4.1	3.9	3.9
13	29411	4%	8%	34%	39%	15%	54%	12%	42	3.5	3.5	3.5	3.5
14	28720	4%	9%	34%	37%	17%	54%	12%	42	3.5	3.5	3.5	3.5
15	31972	3%	6%	20%	53%	18%	71%	9%	61	3.8	3.7	3.7	3.7
16	31921	6%	10%	19%	46%	20%	66%	16%	50	3.6	3.7	3.6	3.6
17	31694	6%	7%	23%	40%	24%	64%	13%	50	3.7	3.8	3.7	3.7
18	23979	6%	8%	30%	38%	19%	57%	13%	43	3.6	3.6	3.5	3.5

Figure 1: Mean responses to each question (all students excluding Offshore and IKE)

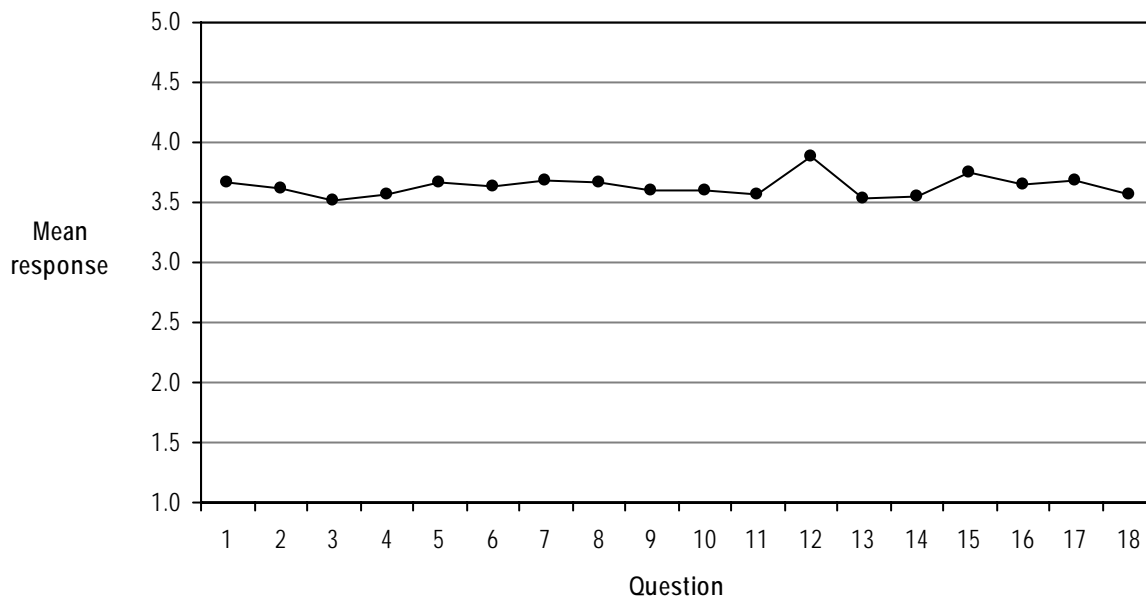


Figure 2: Percentage agreement for each question (all students excluding Offshore and IKE)

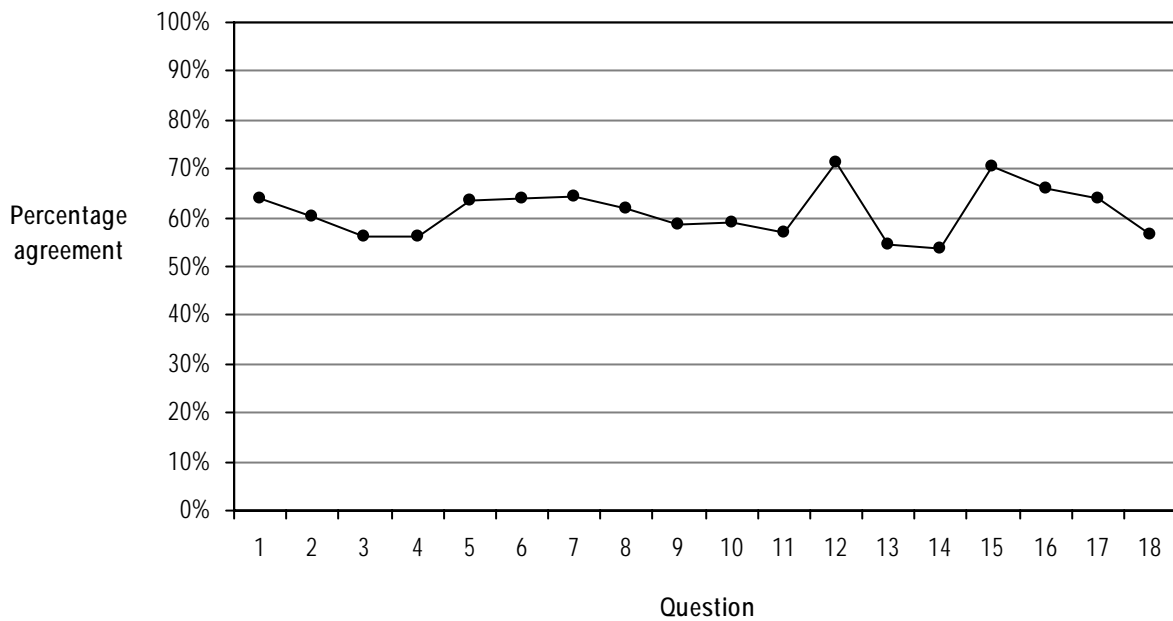


Table 3 and Table 4 below show the mean responses for each question by faculty, campus, gender, citizenship, unit level and funding source. In these tables, offshore students have been displayed separately at the campus level and the Institute of Koorie Education has been displayed separately under the Faculty level. Data from offshore and IKE surveys are not included in the overall University results.

Key results from these tables include an increase in the gap between the means of off-campus and other students particularly evident in questions one to seven. This group of questions are more teaching based and possibly not worded in a way which is applicable to the teaching of off-campus students. There continues to be a gap in overall mean for offshore students for Question 13 ('The library learning resources were appropriate for my needs in this unit') compared to other student groups.

Question 12 ('I consider what I learned in this unit valuable for my future') continues to obtain the highest mean response for all groups (3.9 overall). In most of the other lower-level breakdowns shown in these two tables, the means of each group of students were very similar to the means for the University as a whole.

Table 3: Comparison of mean responses – Teaching questions

	Response		Q1	Q2	Q3	Q4	Q5	Q6	Q7
	Responses	rate							
<b>All students</b>	<b>32363</b>	<b>40%</b>	3.7	3.6	3.5	3.6	3.7	3.6	3.7
<b>Faculty</b>									
Arts	7014	40%	3.8	3.7	3.7	3.7	3.8	3.7	3.8
B & L	9296	34%	3.6	3.6	3.5	3.6	3.6	3.6	3.7
Education	3174	41%	3.8	3.7	3.5	3.6	3.7	3.5	3.7
H&BS	6645	45%	3.7	3.6	3.4	3.5	3.6	3.6	3.7
S & T	6684	46%	3.5	3.5	3.4	3.5	3.6	3.6	3.6
IKE	160	18%	4.2	4.1	4.1	4.1	4.2	4.0	4.2
<b>Campus</b>									
Burwood	17462	41%	3.7	3.6	3.5	3.6	3.7	3.6	3.7
Waurm Ponds	6142	49%	3.7	3.7	3.6	3.6	3.7	3.7	3.7
Waterfront	1764	45%	3.7	3.7	3.5	3.5	3.7	3.6	3.7
Warrnambool	1518	50%	3.7	3.7	3.6	3.6	3.7	3.7	3.7
Toorak	821	35%	3.8	3.8	3.7	3.7	3.8	3.7	3.7
On Campus (sub total)	27707	43%	3.7	3.6	3.5	3.6	3.7	3.7	3.7
Off-campus	4656	29%	3.6	3.5	3.4	3.5	3.5	3.5	3.7
Offshore	990	51%	3.8	3.8	3.8	3.7	3.8	3.7	3.7
<b>Gender</b>									
Female	21238	45%	3.7	3.6	3.5	3.6	3.7	3.6	3.7
Male	11125	33%	3.6	3.6	3.5	3.6	3.6	3.6	3.7
<b>Citizenship</b>									
Domestic	26943	41%	3.7	3.6	3.5	3.5	3.7	3.6	3.7
International	5420	35%	3.7	3.7	3.7	3.7	3.7	3.6	3.7
<b>Unit level</b>									
UG	28580	42%	3.7	3.6	3.5	3.6	3.7	3.6	3.7
PGC	3783	31%	3.8	3.7	3.6	3.7	3.7	3.6	3.7
<b>Funding source</b>									
Commonwealth	24187	43%	3.7	3.6	3.5	3.5	3.6	3.6	3.7
Domestic fee-paying	2673	31%	3.7	3.6	3.5	3.6	3.7	3.6	3.7
International fee-paying	5420	35%	3.7	3.7	3.7	3.7	3.7	3.6	3.7
Other	66	13%	3.6	3.6	3.4	3.5	3.6	3.6	3.8

Table 4: Comparison of mean responses – Unit questions

	Q8	Q9	Q10	Q11	Q12	Q13	Q14	Q15	Q16	Q17	Q18
<b>All students</b>	3.7	3.6	3.6	3.6	3.9	3.5	3.5	3.8	3.6	3.7	3.6
<b>Faculty</b>											
Arts	3.7	3.6	3.7	3.4	3.9	3.6	3.8	3.9	3.8	3.8	3.5
B & L	3.7	3.6	3.6	3.5	3.9	3.5	3.4	3.7	3.7	3.6	3.6
Education	3.7	3.6	3.7	3.7	4.1	3.6	3.7	3.7	3.4	3.7	3.5
H&BS	3.6	3.6	3.6	3.7	3.9	3.6	3.6	3.7	3.6	3.7	3.6
S & T	3.6	3.6	3.5	3.5	3.8	3.4	3.3	3.7	3.6	3.6	3.5
<b>IKE</b>	4.0	3.9	3.9	3.7	4.2	3.9	4.0	4.0	4.0	4.1	3.6
<b>Campus</b>											
Burwood	3.6	3.6	3.6	3.6	3.8	3.5	3.6	3.8	3.6	3.7	3.6
Waurm Ponds	3.7	3.7	3.6	3.6	3.9	3.6	3.5	3.8	3.7	3.7	3.6
Waterfront	3.7	3.7	3.7	3.7	4.0	3.6	3.6	3.8	3.6	3.7	3.5
Warrnambool	3.7	3.6	3.7	3.7	3.9	3.6	3.6	3.8	3.6	3.7	3.4
Toorak	3.8	3.8	3.7	3.7	3.9	3.6	3.7	3.7	3.8	3.8	3.8
On-Campus (sub total)	3.7	3.6	3.6	3.6	3.9	3.5	3.6	3.8	3.7	3.7	3.6
Off-campus	3.7	3.6	3.6	3.2	3.9	3.6	3.5	3.7	3.6	3.6	3.6
Offshore	3.8	3.8	3.7	3.8	4.0	3.3	3.7	3.6	3.7	3.8	3.6
<b>Gender</b>											
Female	3.7	3.6	3.6	3.6	3.9	3.6	3.6	3.8	3.6	3.7	3.6
Male	3.7	3.6	3.6	3.5	3.9	3.5	3.5	3.7	3.6	3.6	3.5
<b>Citizenship</b>											
Domestic	3.7	3.6	3.6	3.5	3.9	3.5	3.5	3.8	3.6	3.7	3.5
International	3.7	3.7	3.6	3.6	3.8	3.6	3.6	3.7	3.7	3.7	3.6
<b>Unit level</b>											
UG	3.7	3.6	3.6	3.6	3.9	3.5	3.5	3.8	3.6	3.7	3.6
PGC	3.7	3.6	3.7	3.5	4.0	3.6	3.6	3.7	3.6	3.7	3.6
<b>Funding source</b>											
Commonwealth	3.7	3.6	3.6	3.6	3.9	3.5	3.5	3.8	3.6	3.7	3.5
Domestic fee-paying	3.7	3.6	3.6	3.5	4.0	3.6	3.5	3.7	3.7	3.7	3.6
International fee-paying	3.7	3.7	3.6	3.6	3.8	3.6	3.6	3.7	3.7	3.7	3.6
Other	3.7	3.5	3.5	3.3	3.9	3.4	3.4	3.5	3.7	3.7	3.4

The mean responses for the three questions which are used as Council Performance Indicators are shown in Figure 3 below for all students excluding IKE and Offshore at the faculty level. As in previous semesters, the faculty mean responses to each of these questions occurred over a narrow range of values. The Faculty of Science and Technology recorded a mean response below the University average for each of these three questions, all other faculties recorded either the same or higher than the University average.

For Question 18 ('The use of on-line technologies in this unit enhanced my learning experience'), while the Faculty of Arts once again recorded a mean score lower than the University as a whole, the gap has narrowed considerably in comparison to previous semesters. Overall, the faculty responses for this question showed notably less variation than in previous semesters.

Figure 3: Council Performance Indicator questions (all students excluding IKE and Offshore by faculty)

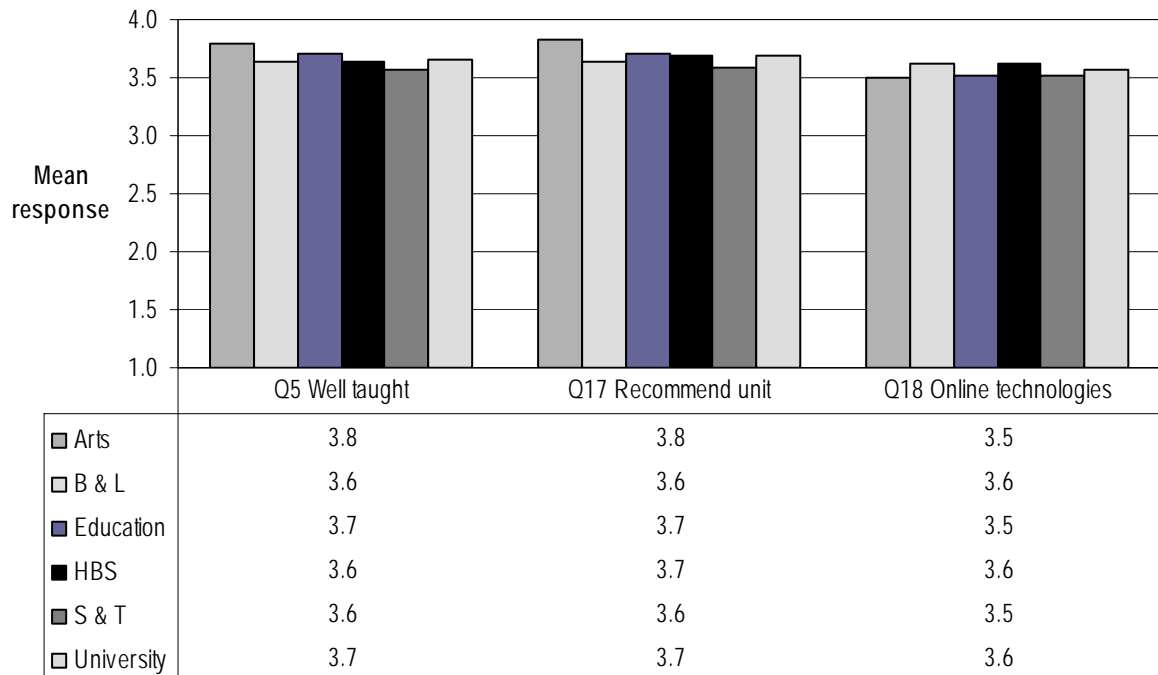


Table 5, Table 6 and Table 7 show the trends in mean response for each of the Council Performance Indicator questions by faculty, campus, citizenship, gender and unit level.

Table 5: Trends for Council Performance Indicator questions: Q5

Q5. This unit was well taught.	Sem 1, 2006	Summer 2005/06	Sem 2, 2005	Sem 1, 2005
<b>Faculty</b>				
Arts	3.8	4.1	3.7	3.7
Business & Law	3.6	3.7	3.6	3.6
Education	3.7	3.9	3.6	3.6
Health & Behavioural Sciences	3.6	3.9	3.7	3.7
Science & Technology	3.6	4.2	3.6	3.5
IKE	4.2	n/a	4.1	4.2
<b>Campus</b>				
Burwood	3.7	3.9	3.6	3.6
Waurm Ponds	3.7	4.3	3.6	3.7
Waterfront	3.7	3.8	3.6	3.7
Warrnambool	3.7	3.8	3.7	3.8
Toorak	3.8	3.9	3.8	3.7
On-Campus (sub total)	3.7	3.9	n/a	n/a
Off-campus	3.5	3.6	3.6	3.4
Offshore	3.8	3.8	3.7	3.6
<b>Gender</b>				
Female	3.7	3.8	3.6	3.7
Male	3.6	3.8	3.6	3.6
<b>Citizenship</b>				
Domestic	3.7	3.8	3.6	3.6
International	3.7	3.8	3.7	3.6
<b>Unit level</b>				
UG	3.7	3.8	3.6	3.6
PGC	3.7	3.9	3.7	3.6

Table 6: Trends for Council Performance Indicator questions: Q17

Q17. I would recommend this unit to other students.	Sem 1, 2006	Summer 2005/06	Sem 2, 2005	Sem 1, 2005
<b>Faculty</b>				
Arts	3.8	4.2	3.7	3.8
Business & Law	3.6	3.7	3.6	3.6
Education	3.7	4.2	3.7	3.7
Health & Behavioural Sciences	3.7	4.0	3.7	3.8
Science & Technology	3.6	4.2	3.6	3.6
IKE	4.1	n/a	4.2	4.2
<b>Campus</b>				
Burwood	3.7	3.9	3.7	3.7
Waurm Ponds	3.7	4.3	3.7	3.6
Waterfront	3.7	3.8	3.7	3.8
Warrnambool	3.7	4.1	3.6	3.8
Toorak	3.8	3.9	3.7	3.7
On-Campus (sub total)	3.7	3.9	n/a	n/a
Off-campus	3.6	3.8	3.7	3.7
Offshore	3.8	3.6	3.6	3.6
<b>Gender</b>				
Female	3.7	3.9	3.7	3.7
Male	3.6	3.8	3.6	3.6
<b>Citizenship</b>				
Domestic	3.7	3.9	3.6	3.7
International	3.7	3.8	3.7	3.7
<b>Unit level</b>				
UGC	3.7	3.8	3.6	3.7
PGC	3.7	3.9	3.7	3.7

Table 7: Trends for Council Performance Indicator questions: Q18

Q18. The use of on-line technologies in this unit enhanced my learning experience.	Sem 1, 2006	Summer 2005/06	Sem 2, 2005	Sem 1, 2005
<b>Faculty</b>				
Arts	3.5	3.7	3.4	3.4
Business & Law	3.6	3.6	3.6	3.6
Education	3.5	3.7	3.5	3.5
Health & Behavioural Sciences	3.6	3.5	3.6	3.6
Science & Technology	3.5	3.8	3.5	3.5
IKE	3.6	n/a	3.7	4.0
<b>Campus</b>				
Burwood	3.6	3.7	3.5	3.5
Waurm Ponds	3.6	3.6	3.5	3.5
Waterfront	3.5	3.6	3.5	3.5
Warrnambool	3.4	3.6	3.5	3.5
Toorak	3.8	3.8	3.7	3.7
On-Campus (sub total)	3.6	3.7	n/a	n/a
Off-campus	3.6	3.6	3.6	3.5
Offshore	3.6	3.2	3.5	3.6
<b>Gender</b>				
Female	3.6	3.6	3.6	3.5
Male	3.5	3.7	3.5	3.5
<b>Citizenship</b>				
Domestic	3.5	3.6	3.5	3.5
International	3.6	3.7	3.6	3.6
<b>Unit level</b>				
UGC	3.6	3.6	3.5	3.5
PGC	3.6	3.5	3.5	3.6

### *Conclusion*

The online evaluation was conducted successfully without complication. Survey forms for the Institute of Koorie Education were distributed according to amended procedures which would enable the distribution of survey forms during residential intensives. The turnaround of results for schools and faculties has been achieved within the four week schedule (from time of receiving data from ITSD).

School and faculty reports have been sent to the appropriate people to be used for their internal reporting requirements.

The on-line SETU has been enhanced to include evaluation of named teaching staff and the addition of optional questions. The new enhanced system will be operational for the semester 2,2006 evaluation period. The semester 2,2006 report will reflect these enhancements.

**Helen Jacob**

Manager, Evaluation and Surveys

18 September 2006