

Student Evaluation of Teaching and Units: Semester 2, 2005

About the survey

Student evaluation of teaching and units for semester 2, 2005 took place between 3 October and 21 October 2005. As in previous semesters, the evaluations were conducted online for all students except for two cohorts:

- Institute of Koorie Education students received paper-based surveys
- offshore students received paper-based survey forms via their offshore teaching partners

An advertising campaign, individual email invitations and letters posted to off-campus students were used to encourage students to complete the survey using the online evaluation system.

Completed surveys received from offshore and IKE students were analysed separately from the online evaluations in order to avoid delays in data analysis and reporting to schools and faculties. Enrolments and responses for offshore and IKE students have been excluded from the calculation of response rate. Because offshore and Institute of Koorie Education student unit enrolments are less than 3% and 0.5% of the University their omission from the overall University means and lower level analysis would have a generally negligible effect on the results.

As student identification is not accurately recorded by students using paper-based surveys (offshore and Institute of Koorie Education) responses from paper surveys cannot be incorporated into the University dataset. The overall University results in this report **do not** in general incorporate responses from offshore and IKE students; results for these students are shown as supplementary line items in the detailed tables (Table 3– Table 7).

About the survey questions and scale

The survey for semester 2, 2005 contained the same 18 questions which have been used in the survey each time since its introduction in semester 1, 2003. For each question, students were asked to choose a response on a scale of 1 (strongly disagree) to 5 (strongly agree), or to choose NA if they believed that the question did not apply to them in that unit.

Table 1: Survey questions

Questions related to teaching	
1.	The teaching staff of this unit stimulated my interest in further learning.
2.	The teaching staff of this unit motivated me to do my best work.
3.	The teaching staff gave me helpful feedback on how I was going.
4.	The teaching staff made a real effort to understand difficulties I might be having with my work.
5.	This unit was well taught.
6.	I had a clear idea of what was expected of me in this unit.
7.	Course materials in this unit were of a high quality.
Questions related to the unit	
8.	This unit developed my analytical skills.
9.	This unit developed my problem-solving skills.
10.	This unit developed my written communication skills.
11.	This unit developed my ability to work as a team member.
12.	I consider what I learned in this unit valuable for my future.
13.	The library learning resources were appropriate for my needs in this unit.
14.	My experience in this unit encouraged me to value perspectives of people from different cultures.
15.	The amount of work required in this unit has been appropriate.
16.	Requirements for completing assessment tasks in this unit have been clear and specific.
17.	I would recommend this unit to other students.
18.	The use of on-line technologies in this unit enhanced my learning experience.

Questions 5, 17 and 18 are used in the Council Performance Indicators. These questions are highlighted in **bold type** in the figures and tables in this report.

The results reported for this survey are for **valid** responses for each question, in which the student has chosen a response from 1 to 5. Because 'NA' and 'did not answer' responses are excluded from the results, the number of responses reported may differ for each question.

The **mean response** for each question has been calculated by adding the numerical value (on the scale 1 to 5) of each valid response and dividing by the number of valid responses for that question.

Percentage agreement for each question is determined from the number of responses 4 (agree) or 5 (strongly agree) as a percentage of all valid responses to that question.

Response rates

Approximately 24,278 responses were received from 76,903 unit enrolments (excluding students from offshore teaching partners, and the Institute of Koorie Education), giving an overall response rate of 32%. This is slightly lower than the response rate recorded for semester 2, 2004 (36%) and the lowest response rate recorded since the evaluations were conducted online. The highest response rate was recorded in semester 1, 2004 (45%), the first semester where the evaluations were conducted fully online.

The overall response rates for each faculty, campus, mode of attendance, citizenship, unit level, funding source, offshore status and gender are shown alongside the detailed results for these categories in Table 3.

Limitations

Results

The overall results of the evaluation for semester 2, 2005 were notably the same as the results for semester 1, 2005. There has been little variation in the means over the past four semesters. In particular:

- Each question recorded a mean response the same as semester 1, 2005, and (to the nearest 0.1) for semester 1 and 2, 2004.
- Each of the 18 questions recorded a mean of 3.5 or higher, and each question gained agreement from at least 52% of the students who responded.
- Each question recorded the same or higher mean compared to both semester 2 of 2003 and semester 1 of 2004.

In other results:

- Question 12 ('I consider what I learned in this unit valuable for my future') was once again the highest scoring question; its percentage agreement remaining the same at 73% for semester 1, 2005 and semester 2, 2004.
- Questions 3, 4, 11, 13 and 14 once again recorded the lowest scores, although each of these questions remained steady in mean response and most increased slightly on percentage agreement compared to semester 1 of 2005 and semester 2, 2004.
- Percentage agreement increased from 1 – 2% for the majority of questions with the exception of questions 5, and 12 which recorded a percentage decrease of 1%.
- The number of responses received for question 18 (approximately 17 959) was once again much lower than the number of responses received for other questions (average 23 000).

The overall University results for each question are shown in, Figure 1 and Figure 2.

Table 2: Summary of responses (all students excluding offshore, and Institute of Koorie Education)

Q.	No. of responses	Strongly disagree	Disagree	Neutral	Agree	Strongly agree	Percentage agreement	Mean							
								Sem 2 2005	Sem 1 2005	Summer 2004-5	Sem 2 2004	Sem 1 2004	Summer 2003-4	Sem 2 2003	Sem 1 2003
Teaching															
1	23707	5%	10%	23%	41%	21%	62%	3.6	3.6	3.7	3.6	3.5	3.5	3.5	3.6
2	23660	5%	11%	25%	39%	20%	59%	3.6	3.6	3.6	3.6	3.4	3.5	3.5	3.5
3	23536	6%	13%	26%	36%	18%	55%	3.5	3.5	3.5	3.5	3.3	3.4	3.3	3.3
4	23003	5%	11%	28%	36%	20%	56%	3.5	3.5	3.5	3.5	3.4	3.4	3.4	3.4
5	23628	6%	9%	23%	39%	22%	62%	3.6	3.6	3.6	3.6	3.5	3.5	3.6	3.7
6	23949	6%	11%	20%	44%	20%	64%	3.6	3.6	3.6	3.6	3.5	3.5	3.6	3.6
7	23782	4%	8%	24%	43%	21%	63%	3.7	3.7	3.6	3.6	3.6	3.5	3.6	3.6
Units															
8	23664	3%	7%	26%	48%	17%	65%	3.7	3.7	3.6	3.7	3.5	3.5	3.5	3.5
9	23404	3%	8%	28%	45%	16%	61%	3.6	3.6	3.6	3.6	3.4	3.5	3.4	3.4
10	23424	3%	8%	28%	44%	17%	60%	3.6	3.6	3.5	3.6	3.4	3.4	3.4	3.4
11	21215	5%	12%	29%	36%	18%	53%	3.5	3.5	3.5	3.5	3.3	3.3	3.3	3.2
12	23874	4%	5%	19%	43%	29%	73%	3.9	3.9	4	3.9	3.8	3.8	3.8	3.9
13	22011	4%	8%	34%	40%	14%	55%	3.5	3.5	3.3	3.5	3.3	3.2	3.3	3.2
14	21140	4%	9%	35%	36%	16%	52%	3.5	3.5	3.5	3.5	3.3	3.4	3.3	3.2
15	23957	3%	7%	19%	53%	17%	70%	3.7	3.7	3.7	3.7	3.6	3.5	3.6	3.7
16	23915	6%	10%	19%	46%	19%	65%	3.6	3.6	3.6	3.6	3.5	3.5	3.6	3.6
17	23807	6%	7%	24%	40%	23%	63%	3.7	3.7	3.8	3.7	3.6	3.7	3.6	3.7
18	17959	6%	8%	31%	39%	17%	56%	3.5	3.5	3.5	3.5	3.3	3.2	3.3	3.2

Figure 1: Mean responses to each question (all students excluding offshore, and Institute of Koorie Education)

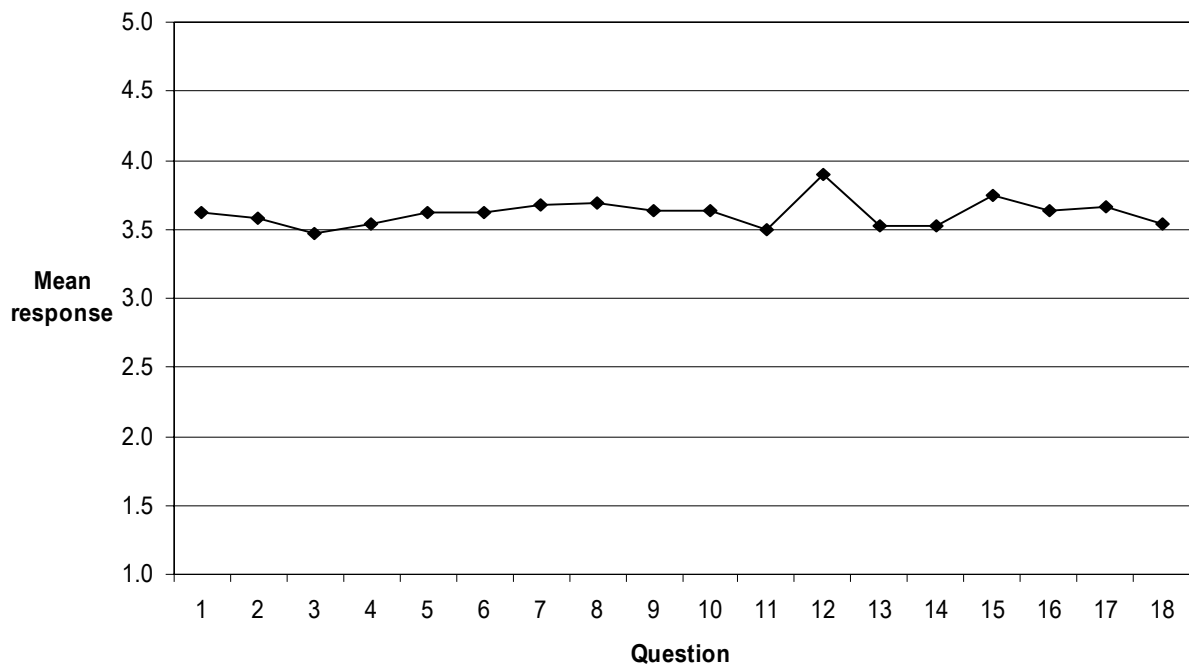


Figure 2: Percentage agreement for each question (all students excluding offshore, and Institute of Koorie Education)

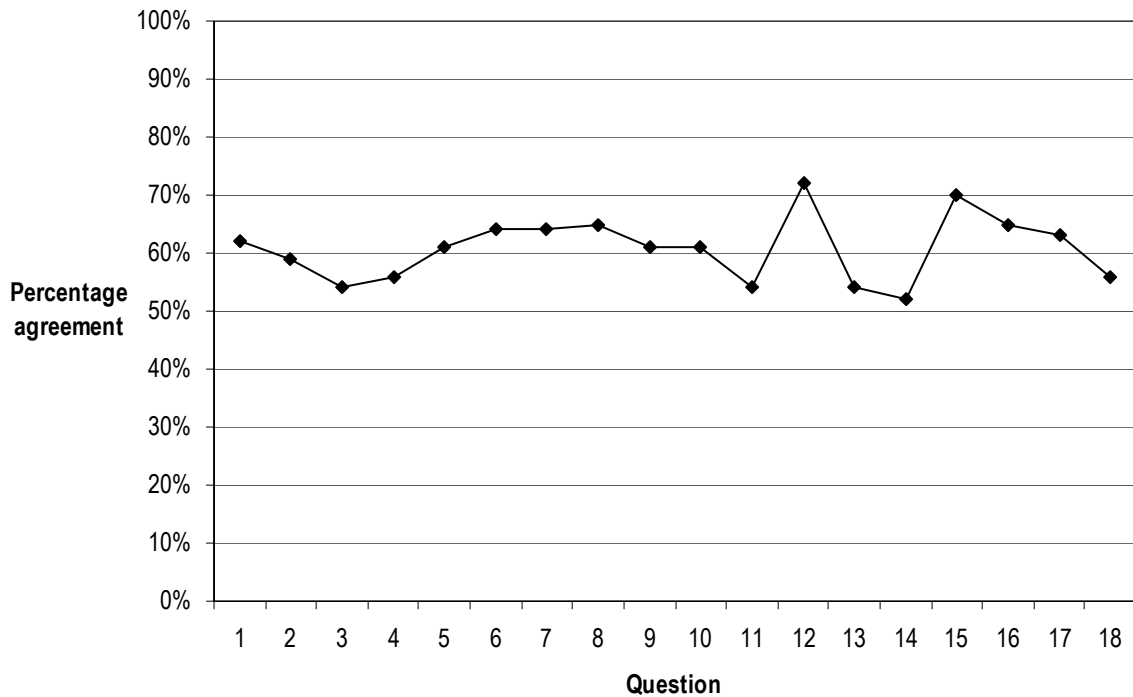


Table 3 and Table 4 below show the mean responses for each question by faculty, campus, mode, gender, citizenship, unit level and funding source. In these tables, offshore and IKE students have been displayed separately at the campus level. Data from offshore and IKE surveys are not included in the overall University results and are excluded from lower level analyses.

Key results from these tables include a significant difference in means of off-campus and students on other campuses particularly evident in questions one to seven. This group of questions are more teaching based and possibly not worded in a way which is applicable to the teaching of off-campus students. There continues to be a gap in overall mean for offshore students for Question 13 ('The library learning resources were appropriate for my needs in this unit') compared to other student groups. Means from IKE students continue to rate higher than students from other groups particularly for teaching questions 1 – 7.

Question 12 ('I consider what I learned in this unit valuable for my future') continues to obtain the highest mean response for all groups. In most of the other lower-level breakdowns shown in these two tables, the means of each group of students were very similar to the means for the University as a whole.

Table 3: Comparison of mean responses – Teaching questions

	Responses	Response rate	Q1	Q2	Q3	Q4	Q5	Q6	Q7
All students	24278	32%	3.6	3.6	3.5	3.5	3.6	3.6	3.7
Faculty									
Arts	5098	31%	3.7	3.7	3.6	3.6	3.7	3.7	3.7
B & L	6670	24%	3.5	3.5	3.4	3.5	3.6	3.6	3.6
Education	2642	34%	3.7	3.6	3.5	3.6	3.6	3.5	3.7
HBS	4727	35%	3.7	3.6	3.4	3.5	3.7	3.6	3.7
S & T	5196	39%	3.6	3.5	3.5	3.5	3.6	3.6	3.6
Campus									
Burwood	12465	32%	3.6	3.6	3.5	3.5	3.6	3.6	3.7
Waurm Ponds	4520	39%	3.6	3.6	3.5	3.6	3.6	3.7	3.7
Waterfront	1483	39%	3.7	3.6	3.4	3.5	3.6	3.5	3.6
Warrnambool	1168	39%	3.6	3.6	3.5	3.6	3.7	3.7	3.7
Toorak	652	26%	3.7	3.7	3.6	3.7	3.8	3.7	3.7
Off-campus	3990	22%	3.6	3.5	3.4	3.5	3.6	3.6	3.7
Mode									
On	20288	34%	3.6	3.6	3.5	3.6	3.6	3.6	3.7
Off	3990	22%	3.6	3.5	3.4	3.5	3.6	3.6	3.7
Gender									
Female	15866	35%	3.6	3.6	3.5	3.5	3.6	3.6	3.7
Male	8412	26%	3.6	3.6	3.5	3.5	3.6	3.6	3.6
Citizenship									
Domestic	19883	32%	3.6	3.6	3.4	3.5	3.6	3.6	3.7
International	4395	29%	3.7	3.7	3.6	3.6	3.7	3.6	3.6
Unit level									
UG	21407	34%	3.6	3.6	3.5	3.5	3.6	3.6	3.7
PGC	2871	22%	3.7	3.7	3.6	3.6	3.7	3.6	3.7
Funding source									
Commonwealth	18030	34%	3.6	3.6	3.4	3.5	3.6	3.6	3.7
Domestic fee-paying	1813	23%	3.6	3.5	3.4	3.5	3.6	3.6	3.7
International fee-paying	4248	28%	3.7	3.7	3.6	3.6	3.7	3.6	3.6
Other	187	32%	3.8	3.6	3.4	3.5	3.7	3.7	3.6
Supplementary results									
Offshore	817	38%	3.7	3.8	3.8	3.8	3.7	3.7	3.6
Institute of Koorie Education	122	16%	4.1	4.2	4.1	4.3	4.1	4.1	4.2

Table 4: Comparison of mean responses – Unit questions

	Q8	Q9	Q10	Q11	Q12	Q13	Q14	Q15	Q16	Q17	Q18
All students	3.7	3.6	3.6	3.5	3.9	3.5	3.5	3.7	3.6	3.7	3.5
Faculty											
Arts	3.7	3.5	3.8	3.3	3.9	3.6	3.7	3.9	3.7	3.7	3.4
B & L	3.7	3.7	3.6	3.5	3.9	3.5	3.5	3.7	3.7	3.6	3.6
Education	3.7	3.6	3.7	3.7	4.1	3.6	3.6	3.8	3.4	3.7	3.5
HBS	3.7	3.7	3.7	3.5	4.0	3.6	3.5	3.8	3.7	3.7	3.6
S & T	3.7	3.7	3.5	3.5	3.8	3.4	3.3	3.7	3.6	3.6	3.5
Campus											
Burwood	3.7	3.6	3.6	3.6	3.9	3.5	3.5	3.7	3.6	3.7	3.5
Waurm Ponds	3.7	3.6	3.6	3.5	3.9	3.5	3.5	3.8	3.7	3.7	3.5
Waterfront	3.7	3.8	3.6	3.7	4.0	3.5	3.5	3.7	3.6	3.7	3.5
Warrnambool	3.7	3.6	3.6	3.6	3.9	3.5	3.5	3.8	3.7	3.6	3.5
Toorak	3.7	3.7	3.6	3.6	3.9	3.6	3.6	3.7	3.7	3.7	3.7
Off-campus	3.7	3.6	3.7	3.1	3.9	3.7	3.5	3.7	3.6	3.7	3.6
Mode											
On	3.7	3.6	3.6	3.5	3.9	3.5	3.5	3.7	3.6	3.7	3.5
Off	3.7	3.6	3.7	3.1	3.9	3.7	3.5	3.7	3.6	3.7	3.6
Gender											
Female	3.7	3.6	3.7	3.5	3.9	3.5	3.5	3.8	3.6	3.7	3.6
Male	3.7	3.7	3.6	3.5	3.9	3.5	3.5	3.7	3.6	3.6	3.5
Citizenship											
Domestic	3.7	3.6	3.6	3.5	3.9	3.5	3.5	3.8	3.6	3.6	3.5
International	3.7	3.7	3.6	3.6	3.8	3.5	3.6	3.7	3.7	3.7	3.6
Unit level											
UG	3.7	3.6	3.6	3.5	3.9	3.5	3.5	3.7	3.6	3.6	3.5
PGC	3.7	3.7	3.7	3.4	4.0	3.6	3.6	3.7	3.7	3.7	3.5
Funding source											
Commonwealth	3.7	3.6	3.6	3.5	3.9	3.5	3.5	3.8	3.6	3.6	3.5
Domestic fee-paying	3.7	3.6	3.6	3.2	3.9	3.6	3.4	3.6	3.6	3.7	3.4
International fee-paying	3.7	3.7	3.6	3.6	3.8	3.5	3.6	3.7	3.7	3.7	3.6
Other	3.7	3.6	3.7	3.3	4.0	3.7	3.7	3.8	3.8	3.8	3.3
Supplementary results											
Offshore	3.8	3.7	3.5	3.6	3.8	3.4	3.6	3.6	3.7	3.6	3.5
Institute of Koorie Education	4.0	3.9	3.9	4.0	4.3	3.7	4.0	4.0	3.9	4.2	3.7

Council Performance Indicators

The mean responses for the three questions which are used as Council Performance Indicators are shown in Figure 3 below. As in previous semesters, the faculty mean responses to each of these questions occurred over a narrow range of values. The Faculty of Arts, Education, Health and Behavioural Sciences and IKE recorded mean responses which was at or above the University average for each of these questions, while the Faculty of Science and Technology recorded a mean response at or below the University average for each of these three questions.

For Question 18 ('The use of on-line technologies in this unit enhanced my learning experience'), while the Faculty of Arts once again recorded a mean score lower than the University as a whole, the gap remained consistent with that observed in semester 1, 2005 but considerably narrowed in comparison to previous semesters. Overall, the faculty responses for this question showed notably less variation than in previous semesters.

Figure 3: Council Performance Indicator questions

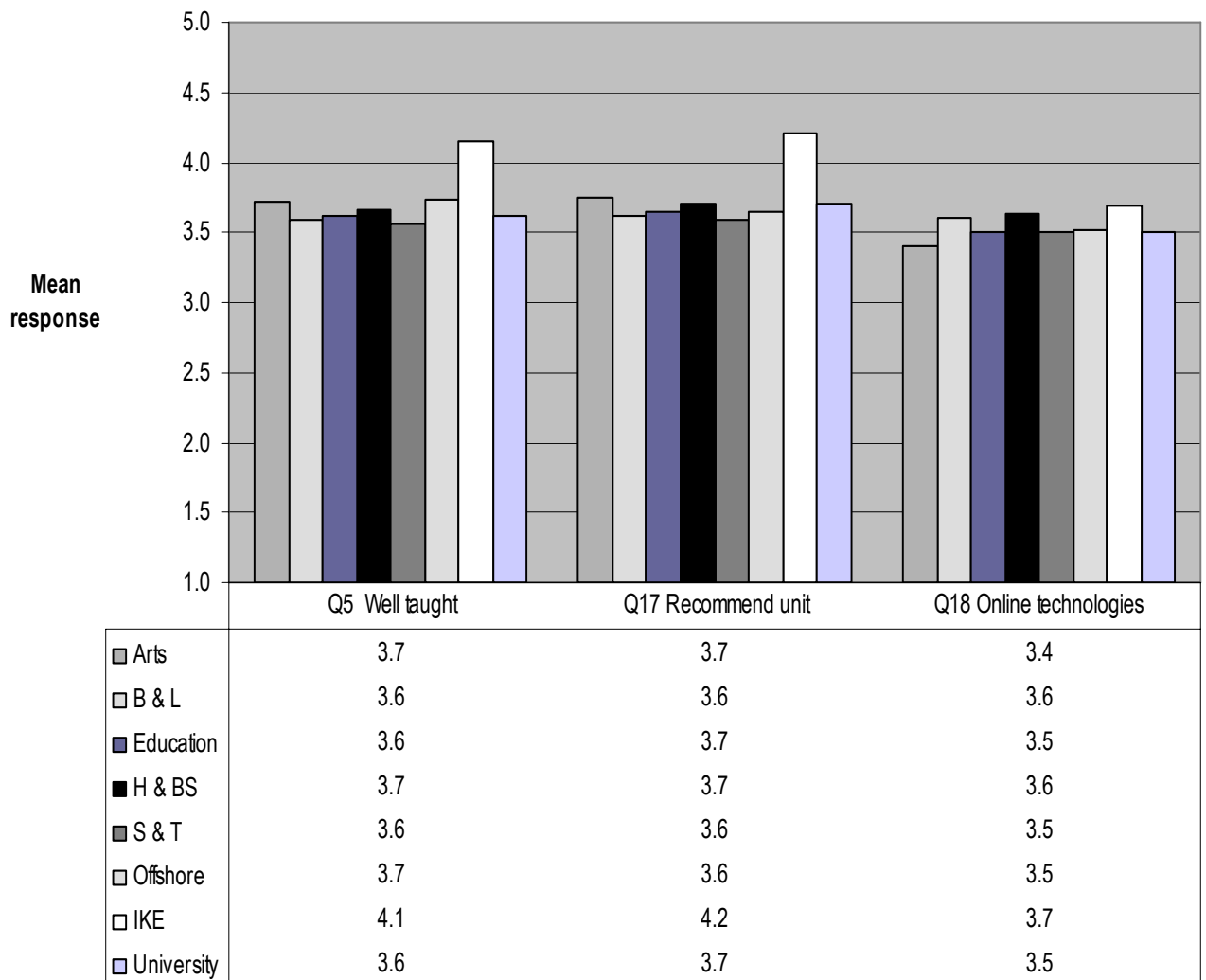


Table 5, 6 and 7 show the trends in mean response for each of the Council Performance Indicator questions by faculty, campus, citizenship, gender and unit level.

Completed surveys from students of the Institute of Koorie Education had not been received at the time of producing the semester 1, 2005 report. This data has now been included in the table below.

Table 5: Trends for Council Performance Indicator questions: Q5

Q5. This unit was well taught.	Sem 2, 2005	Sem 1, 2005	Summer 2004/5	Sem 2, 2004	Sem 1, 2004	Summer 2003/4	Sem 2, 2003	Sem 1, 2003
Faculty								
Arts	3.7	3.7	3.4	3.7	3.6	3.6	3.8	3.9
Business & Law	3.6	3.6	3.6	3.6	3.4	3.3	3.4	3.6
Education	3.6	3.6	3.7	3.7	3.5	4.1	3.6	3.7
Health & Behavioural Sciences	3.7	3.7	3.3	3.6	3.6	3.2	3.6	3.7
Science & Technology	3.6	3.5	4.1	3.5	3.4	4	3.4	3.5
Campus								
Burwood	3.6	3.6	3.7	3.6	3.5	3.6	3.6	3.7
Waurm Ponds	3.6	3.7	4.1	3.6	3.6	4.5	3.6	3.7
Waterfront	3.6	3.7	3.8	3.6	3.5	4.1	3.6	3.7
Warrnambool	3.7	3.8	3.7	3.7	3.6	4	3.7	3.8
Toorak	3.8	3.7	4.8	3.7	3.6	n/a	n/a	n/a
Off-campus	3.6	3.4	3.6	3.5	3.3	3.3	3.4	3.4
Mode								
On	3.6	3.5	3.8	3.6	3.5	3.8	n/a	n/a
Off	3.6	3.7	3.6	3.5	3.3	3.3	n/a	n/a
Gender								
Female	3.6	3.7	3.7	3.6	3.5	3.4	n/a	n/a
Male	3.6	3.6	3.7	3.6	3.5	3.5	n/a	n/a
Citizenship								
Domestic	3.6	3.6	3.8	3.6	3.5	3.6	n/a	n/a
International	3.7	3.6	3.5	3.6	3.5	3.3	n/a	n/a
Unit level								
UG	3.6	3.6	3.7	3.6	3.5	3.5	3.6	3.7
PGC	3.7	3.6	3.6	3.7	3.5	3.4	3.5	3.5
Supplementary results								
Offshore	3.7	3.6	3.6	3.6	3.3	3.5	3.1	n/a
Institute of Koorie Education	4.1	4.2	n/a	4.2	4.3	n/a	4.1	n/a

Table 6: Trends for Council Performance Indicator questions: Q17

Q17. I would recommend this unit to other students.	Sem 2, 2005	Sem 1, 2005	Summer 2004/5	Sem 2, 2004	Sem 1, 2004	Summer 2003/4	Sem 2, 2003	Sem 1, 2003
Faculty								
Arts	3.7	3.8	4.3	3.8	3.7	4.2	3.8	3.9
Business & Law	3.6	3.6	3.8	3.6	3.5	3.6	3.5	3.6
Education	3.7	3.7	4.4	3.7	3.6	4.1	3.7	3.7
Health & Behavioural Sciences	3.7	3.8	3.5	3.7	3.6	3	3.5	3.7
Science & Technology	3.6	3.6	4.1	3.6	3.4	4	3.4	3.5
Campus								
Burwood	3.7	3.7	3.9	3.7	3.5	3.5	3.3	3.6
Waurm Ponds	3.7	3.6	4	3.6	3.5	4.5	3.3	3.6
Waterfront	3.7	3.8	3.8	3.7	3.6	4.3	3.2	3.7
Warrnambool	3.6	3.8	4.4	3.7	3.6	4.6	3.1	3.8
Toorak	3.7	3.7	4.8	3.8	3.7	n/a	n/a	n/a
Off-campus	3.7	3.7	3.9	3.7	3.6	3.7	3.3	3.7
Mode								
On	3.7	3.7	4.1	3.6	3.6	3.7	n/a	n/a
Off	3.7	3.7	3.8	3.7	3.5	3.7	n/a	n/a
Gender								
Female	3.7	3.7	4	3.7	3.5	3.4	n/a	n/a
Male	3.6	3.6	3.9	3.6	3.5	3.5	n/a	n/a
Citizenship								
Domestic	3.6	3.7	4.1	3.7	3.6	3.8	n/a	n/a
International	3.7	3.7	3.8	3.7	3.5	3.4	n/a	n/a
Unit level								
UG	3.6	3.7	3.8	3.6	3.5	3.5	3.6	3.7
PGC	3.7	3.7	3.9	3.8	3.5	3.4	3.5	3.5
Supplementary results								
Offshore	3.6	3.6	3.5	3.5	3.3	3.5	3.3	n/a
Institute of Koorie Education	4.2	4.2	n/a	4.3	4.1	n/a	4.2	n/a

Table 7: Trends for Council Performance Indicator questions: Q18

Q18. The use of on-line technologies in this unit enhanced my learning experience.	Sem 2, 2005	Sem 1, 2005	Summer 2004/5	Sem 2, 2004	Sem 1, 2004	Summer 2003/4	Sem 2, 2003	Sem 1, 2003
Faculty								
Arts	3.4	3.4	4.0	3.3	3.1	3.4	3.2	3.0
Business & Law	3.6	3.6	3.5	3.5	3.4	3.2	3.4	3.4
Education	3.5	3.5	3.8	3.5	3.3	2.0	3.2	3.2
Health & Behavioural Sciences	3.6	3.6	3.1	3.5	3.5	2.8	3.2	3.2
Science & Technology	3.5	3.5	3.6	3.5	3.4	3.3	3.3	3.2
Campus								
Burwood	3.5	3.5	3.5	3.5	3.4	3.0	3.3	3.2
Waurm Ponds	3.5	3.5	3.5	3.5	3.4	3.5	3.3	3.2
Waterfront	3.5	3.5	3.3	3.4	3.4	3.8	3.2	3
Warrnambool	3.5	3.5	4.0	3.5	3.3	3.3	3.1	3.2
Toorak	3.7	3.7	3.5	3.7	3.6	n/a	n/a	n/a
Off-campus	3.6	3.5	3.5	3.5	3.2	3.1	3.3	3.3
Mode								
On	3.5	3.5	3.6	3.5	3.4	3.2	n/a	n/a
Off	3.6	3.5	3.5	3.5	3.2	3.1	n/a	n/a
Gender								
Female	3.6	3.5	3.7	3.5	3.4	3.1	n/a	3.3
Male	3.5	3.5	3.6	3.5	3.3	3.2	n/a	3.2
Citizenship								
Domestic	3.5	3.5	3.6	3.5	3.6	3.8	n/a	n/a
International	3.6	3.6	3.6	3.6	3.5	3.4	n/a	n/a
Unit level								
UG	3.5	3.5	3.6	3.5	3.3	3.2	3.3	3.2
PGC	3.5	3.6	3.5	3.6	3.3	3.2	3.4	3.3
Supplementary results								
Offshore	3.5	3.6	3.6	3.4	3.2	3.3	3.1	n/a
Institute of Koorie Education	3.7	4.0	n/a	3.7	4.1	n/a	3.5	n/a

Conclusion

The online evaluation process was conducted successfully with only minor complications. Survey forms for the Institute of Koorie education were distributed according to amended procedures which would enable the distribution of survey forms during residential intensives. The turnaround of results for schools and faculties has been achieved within the four week schedule (from time of receiving data from ITSD).

School and faculty reports have been sent to the appropriate people to be used for their internal reporting requirements.

Helen Jacob
Manager, Evaluation and Surveys

30 November 2005