

# Deakin University

## Report on the outcomes of the Higher Degrees by Research Candidate Survey conducted in September 2007

The terms of reference for the Research and Research Training Committee include a requirement to monitor the quality of supervision of candidates and the research training environment across the University.

As one step towards this objective, the Research Services Division introduced an annual, anonymous survey of all postgraduate research candidates in February 1999 to determine attitudes to research supervision and the research environment. Since then, surveys have been conducted to coincide with the time of the annual review of progress.

A consistent pattern which has been reflected in all surveys is that HDR candidates consider the performance of their supervisors to be very good. They are a little less satisfied with their research environment, but it still scores well on average. Figure 1 and Table 4 show the results for the ten surveys conducted to date.

### The September 2007 survey

A total of 844 research candidates were invited to complete an online survey at the same time that they completed their online annual review of progress. 168 responded, representing a response rate of 20%. This is the lowest rate since the survey commenced (the previous lowest being 21% in 2003). The rate in 2005/2006 was in the 28%-29% range. In 2004 it was 48%. The highest response rates ever achieved were in the 1999-2001 period when approximately 60% of candidates completed the survey.

Possible reasons for the decline in the response rate could be:

- over surveying
- candidates may not feel that direct action results from their comments
- the online format is less attractive than a paper-based survey.

The number of responses by Faculty and School is shown in Table 2. Figure 2 shows the response rate by Faculty.

### Survey format

The survey questions included:

1. Brief candidature details - School, commencement year, mode of enrolment and study, and location of off-campus research.
2. Supervision details - A set of 11 questions concerning supervisory interactions with responses captured using the 5-point Likert scale in the range 5 (strongly agree) to 1 (strongly disagree).
3. Research environment - A set of 12 questions addressing issues such as funding support, encouragement to conduct research and the induction process. Responses were captured using the 5-point Likert scale in the range 5 (strongly agree) to 1 (strongly disagree).

4. A comments section canvassing the positive and negative aspects of the research experience at Deakin. An opportunity was provided to comment on the questionnaire structure and suggest ways of improving the quality of research training at Deakin.

## Candidate Responses

### Supervision

As shown in Table 3, supervision arrangements were perceived to be highly satisfactory with an overall average of 4.4. The percentage of respondents who gave a score at each level of the 1-5 scale has been provided. As can be seen, the responses were heavily concentrated at the 4-5 end of the scale (90%), with only 4% of respondents giving a score of 1 or 2 for their supervision.

Respondents were most satisfied with the extent to which their supervisor:

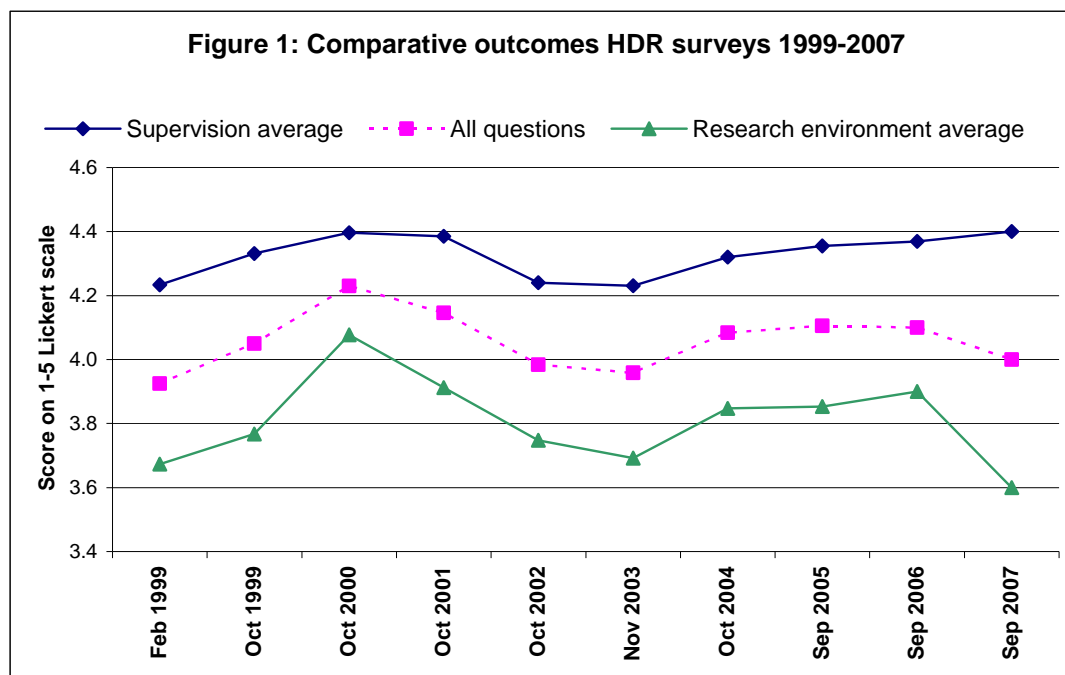
- requires them to think independently (mean of 4.7);
- promotes opportunities for self direction (mean of 4.6);
- encourages them in their research (mean of 4.5);
- effectively communicates his/her expertise (mean of 4.5).

The areas of least satisfaction (albeit still a good rating of 4.2) were:

- the extent to which their supervisors have directed them to resources useful for starting their project;
- requirements by supervisors for students to plan work and meet deadlines;
- the extent to which supervisors provide timely feedback on written work.

All of the above results are virtually identical to the 2004, 2005 and 2006 surveys.

In all of the surveys conducted to date, the average of all the questions relating to supervision has remained in the narrow range of 4.2 to 4.4 (Table 4 and Figure 1).



## **Research Environment**

Respondents were less satisfied with their research environment than with their supervision, a pattern which has shown up in every previous survey. The overall average was 3.6 (see Table 3). 70% of respondents scored the overall research environment 4 or 5; 14% scored it 1 or 2. While perhaps not a significant decrease from previous surveys, the average of 3.6 was the lowest recorded since the survey commenced. In previous surveys, the average has remained in the range of 3.7 to 4.1 (Table 4 and Figure 1).

Respondents were most satisfied with the extent to which they:

- were aware of the standards expected for their degree (mean of 4.2);
- have been advised about School supervision practices (mean of 3.9);
- were encouraged to participate in seminars, etc. (mean of 3.9).

This is very similar to the results obtained in the 2004, 2005 and 2006 surveys.

As in previous surveys, respondents were least satisfied with the following aspects, and two of these were the aspects which recorded the largest decline from the previous survey.

Respondents were least satisfied with the extent to which:

- they were offered financial support to attend conferences (mean of 3.0; it was 3.6 in the 2006 survey);
- the financial assistance available to support their research was explained to them (mean of 3.1; it was 3.6 in 2006);
- they felt part of the University academic community (mean of 3.2; it was 3.5 in 2006).

## **Differences in Faculty perceptions**

### **Supervision**

The overall satisfaction with supervision for individual faculties was generally close to the University average of 4.4 (Table 5).

The Faculties of Arts and Health, Medicine, Nursing & Behavioural Sciences had the highest overall mean: 4.5.

The lowest mean was 4.0 in the Faculty of Business and Law. However, with only 9 respondents, this should be treated with caution. So should the values of 3.1 and 3.2 for specific questions for that faculty which are out of line with previous surveys.

Apart from these values, the lowest means for individual questions about supervision, although still satisfactory, were the extent to which:

- Education and Business and Law supervisors require candidates to plan their work and meet deadlines (3.8);
- Science & Technology and Business & Law supervisors provide timely feedback on written work (4.1 and 4.0 respectively);
- Education and Science & Technology supervisors direct candidates to resources useful for starting their project (4.1 and 4.0 respectively).

The highest means were 4.7 and 4.8 and these were recorded for the questions about the extent to which supervisors:

- demonstrate expertise in the topic area (Arts);
- encourage candidates in their work (Education);

- require candidates to think independently (Arts, Education, Health, Medicine, Nursing & Behavioural Sciences and Science & Technology);
- give competent advice on research methodology (Education);
- promote opportunities for self direction (Education).

Time series data on the satisfaction of respondents in the five faculties with their supervision are shown in Tables 6 to 10.

### **Research environment**

Table 5 also shows how candidates rated various aspects of their research environment.

The University-wide average was 3.6 which is a decrease from the 3.9 recorded in 2005 and 2006.

Respondents from Education were the most satisfied (mean of 3.7) with their research environment. Respondents from Arts and Business & Law were the least satisfied (mean of 3.5).

Several faculties had average scores at or below 3.0 for some questions:

- the extent to which respondents feel they were offered financial support to attend conferences (Arts 2.8, Education 2.9, Business & Law 3.0).
- the extent to which respondents feel part of the University academic community (Arts 2.7, Business & Law 2.8).
- the extent to which financial assistance has been explained to candidates (Arts and Business & Law 2.9, Health, Medicine, Nursing & Behavioural Sciences 3.0).

At the upper end of the range, Education and Business & Law respondents gave average scores of 4.5 and 4.4 respectively to the question about the extent to which they are aware of the standards expected for their degree. Education respondents also recorded an average of 4.4 for the question about advice on School supervision practices.

### **Mode of enrolment and study**

Table 1 below shows the enrolment and study modes of the respondents.

**Table 1: Enrolment and study modes**

	<b>On campus</b>	<b>Off campus</b>	<b>Total</b>
<b>Part-time</b>	15%	24%	39%
<b>Full-time</b>	53%	8%	61%
<b>Total</b>	68%	32%	100%

### **Mode of enrolment**

#### **Supervision**

Full-time respondents (average of 4.6) were slightly more satisfied with their supervision than their part-time peers (average 4.3) (Table 11). In previous surveys there has tended to be little or no difference.

## **Research Environment**

Table 11 also shows a similar pattern in the case of the research environment. Full-time respondents recorded a mean of 3.9 and part-time respondents 3.6. In terms of individual questions, the greatest difference (0.8 of a point) was with the extent to which they felt they had been offered financial support to attend conferences: the mean was 3.7 for full-time and 2.9 for part-time respondents.

## **Mode of study**

### **Supervision**

The overall level of satisfaction with supervision was similar for both on-campus and off-campus respondents (4.4 and 4.3 respectively). The results are shown in Table 12. There was virtually no difference in the results for individual questions relating to supervision, the exception being the extent to which they are required to plan their work and meet deadlines: 4.3 for on campus and 3.8 for off campus respondents.

### **Research environment**

On and off campus respondents also had similar levels of satisfaction with the research environment, the mean being 4.0 for on campus and 3.8 for off campus candidates (Table 12). The greatest difference related to satisfaction with workspace: 3.7 for on campus and 2.9 for off campus respondents.

## **Candidate Comments**

### **Most positive aspects of research experience**

As in previous surveys, the support of supervisors was acknowledged by the largest number of respondents (Table 13). Supervisor support, knowledge, availability and overall supervision made up 45% of the positive comments from the 135 respondents to this question. The research experience, research environment and independence/freedom were also commented upon by a considerable number.

### **Least satisfactory aspects of research experience**

A summary of the comments is given in Table 14. Concerns relating to resources and facilities, and isolation and distance received the greatest number of comments. Together they made up 39% of the least satisfactory aspects mentioned. Both of these aspects have featured prominently in all previous surveys.

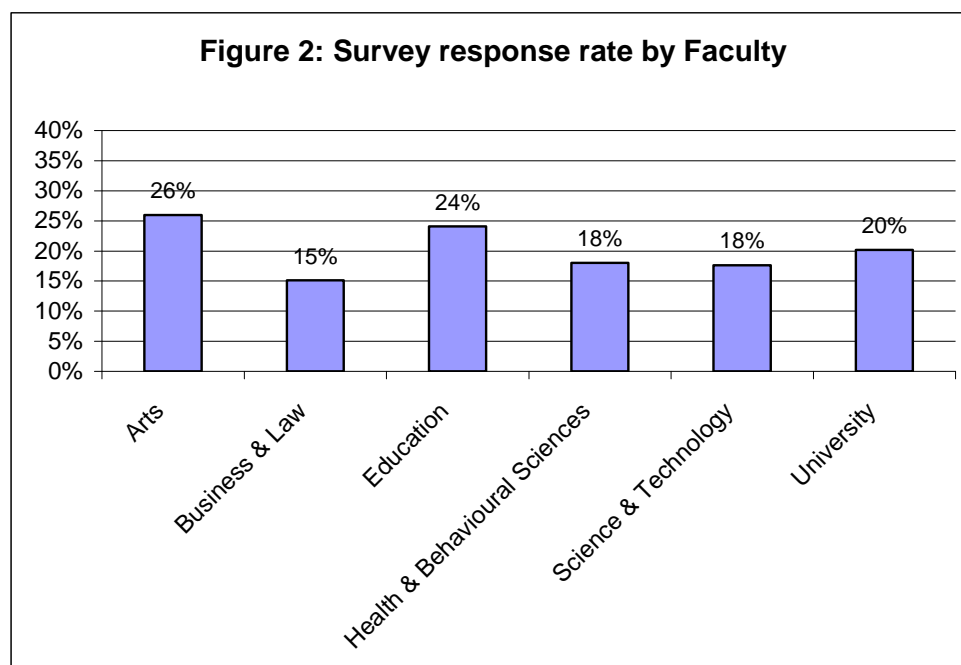
### **Suggested improvements to the quality of research training**

Table 15 shows a summary of the suggested improvements to the quality of research training. As in 2004 and 2006, the most common suggestion was improved research resources, facilities and workspace. In 2005 the most common suggestion was that there should be more courses on aspects such as data analysis, research methodology, software use and thesis writing. The fact that this suggestion has moved down the list could be a reflection of the popularity of Professor Richard Ingleby's workshop series.

Grant Michie  
Executive Officer, Higher Degrees by Research (Research Services Division)  
12 February 2008

**Table 2: Number of responses by faculty and school (September 2007)**

<b>Faculty of Arts – 37 responses</b>	
Communication & Creative Arts	18
History, Heritage and Society	10
International and Political Studies	9
<b>Faculty of Business &amp; Law – 9 responses</b>	
Accounting, Economics & Finance	2
Deakin Business School	4
Information Systems	1
Law	0
Management & Marketing	2
<b>Faculty of Education – 27 responses</b>	
School of Education	27
<b>Faculty of Health &amp; Behavioural Sciences – 42 responses</b>	
Exercise & Nutrition Sciences	9
Health & Social Development	5
Medicine	0
Nursing	6
Psychology	22
<b>Faculty of Science &amp; Technology – 53 responses</b>	
Architecture & Building	6
Centre for Material and Fibre Innovation	4
Engineering & Information Technology	22
Life & Environmental Sciences	21
<b>University – 168 responses</b>	



**Table 3: Candidate satisfaction with supervisor and research environment  
(September 2007)**

	Average <i>n=168</i>	Percentage for each score				
		1	2	3	4	5
<b>My supervisor .....</b>						
has directed me to resources useful for starting my project	4.2	2%	5%	6%	33%	54%
demonstrates expertise in my research topic	4.3	2%	4%	8%	27%	60%
effectively communicates his/her expertise	4.5	1%	3%	5%	30%	61%
encourages me in my research	4.5	2%	2%	4%	23%	68%
requires me to think independently	4.7	1%	1%	2%	21%	76%
is available for discussion when needed	4.4	3%	0%	8%	36%	54%
gives competent advice on research methodology when asked	4.4	4%	2%	5%	25%	64%
requires me to plan my work and meet deadlines	4.2	4%	2%	8%	32%	54%
provides timely feedback on written work	4.2	5%	1%	7%	28%	59%
provides constructive criticism	4.4	2%	4%	4%	26%	65%
promotes opportunities for self direction	4.6	1%	1%	4%	26%	68%
<b>Supervision average</b>	<b>4.4</b>	<b>2%</b>	<b>2%</b>	<b>5%</b>	<b>28%</b>	<b>62%</b>
<b>Research environment</b>						
I have been given an adequate introduction to the School and facilities	3.8	7%	7%	13%	43%	31%
I have been advised about School supervision practices	3.9	5%	6%	14%	42%	33%
I have adequate workspace to conduct my research	3.5	4%	8%	10%	40%	37%
I have adequate access to the facilities I need for my research	3.6	7%	7%	19%	39%	28%
I am aware of the standards expected for my degree	4.2	2%	3%	7%	48%	40%
I have opportunities to develop my presentation skills	3.8	3%	7%	15%	39%	37%
I am encouraged to participate in seminars etc	3.9	4%	10%	13%	35%	39%
I am encouraged to write papers or regular research reports	3.7	4%	8%	19%	33%	36%
I am encouraged to present my work at major conferences	3.6	4%	7%	17%	39%	32%
I am offered some financial support to attend conferences	3.0	14%	13%	15%	31%	26%
I feel that I am part of the University academic community	3.2	10%	12%	28%	29%	20%
The financial assistance to support my research has been explained to me	3.1	14%	8%	24%	34%	19%
<b>Research environment average</b>	<b>3.6</b>	<b>6%</b>	<b>8%</b>	<b>16%</b>	<b>38%</b>	<b>32%</b>
<b>All questions</b>	<b>4.0</b>	<b>4%</b>	<b>5%</b>	<b>11%</b>	<b>33%</b>	<b>46%</b>

1 = Strongly Disagree    2 = Disagree    3 = Uncertain    4 = Agree    5 = Strongly Agree

**Table 4: Comparative outcomes of the 1999-2007 higher degree by research candidate surveys**

	Feb 1999 n=253	Oct 1999 n=461	Oct 2000 n=529	Oct 2001 n=515	Oct 2002 n=331	Nov 2003 n=180	Oct 2004 n=453	Sep 2005 n=239	Sep 2006 n=250	Sep 2007 n=168
<b>My supervisor .....</b>										
has directed me to resources useful for starting my project	4.1	4.3	4.4	4.3	4.2	4.1	4.3	4.3	4.3	4.2
demonstrates expertise in my research topic	4.1	4.2	4.3	4.3	4.2	4.2	4.3	4.3	4.3	4.3
effectively communicates his/her expertise	4.2	4.3	4.4	4.4	4.2	4.2	4.3	4.3	4.3	4.5
encourages me in my research	4.4	4.5	4.5	4.5	4.4	4.4	4.4	4.4	4.4	4.5
requires me to think independently	4.5	4.6	4.7	4.7	4.5	4.6	4.6	4.7	4.6	4.7
is available for discussion when needed	4.2	4.4	4.3	4.3	4.1	4.0	4.3	4.3	4.3	4.4
gives competent advice on research methodology when asked	4.2	4.3	4.4	4.4	4.3	4.2	4.4	4.3	4.3	4.4
requires me to plan my work and meet deadlines	4.0	4.0	4.1	4.1	4.0	4.0	4.1	4.2	4.2	4.2
provides timely feedback on written work	4.1	4.2	4.3	4.2	4.1	4.0	4.1	4.2	4.2	4.2
provides constructive criticism	4.3	4.4	4.4	4.4	4.3	4.3	4.4	4.4	4.4	4.4
promotes opportunities for self direction	4.3	4.5	4.5	4.5	4.4	4.4	4.5	4.5	4.6	4.6
<b>Supervision average</b>	<b>4.2</b>	<b>4.3</b>	<b>4.4</b>	<b>4.4</b>	<b>4.2</b>	<b>4.2</b>	<b>4.3</b>	<b>4.4</b>	<b>4.4</b>	<b>4.4</b>
<b>Research environment</b>										
I have been given an adequate introduction to the School and facilities	3.6	3.7	4.0	3.8	3.6	3.5	3.8	3.8	3.9	3.8
I have been advised about School supervision practices	3.4	3.7	3.9	3.8	3.6	3.5	3.8	3.8	3.9	3.9
I have adequate workspace to conduct my research	3.8	3.9	4.4	4.1	3.9	3.8	3.9	3.9	3.9	3.5
I have adequate access to the facilities I need for my research	3.8	3.9	4.1	3.9	3.9	3.8	4.0	4.0	3.8	3.6
I am aware of the standards expected for my degree	4.0	4.1	4.1	4.2	4.0	4.1	4.2	4.2	4.2	4.2
I have opportunities to develop my presentation skills	3.8	4.0	4.2	4.2	4.0	4.1	4.1	4.1	4.2	3.8
I am encouraged to participate in seminars etc	3.8	4.0	4.3	4.1	3.9	3.8	4.1	4.1	4.2	3.9
I am encouraged to write papers or regular research reports	3.8	3.9	4.3	4.1	3.9	3.9	4.0	4.0	4.0	3.7
I am encouraged to present my work at major conferences	3.3	3.8	4.1	4.0	3.9	3.8	4.0	3.9	3.9	3.6
I am offered some financial support to attend conferences	3.5	3.5	4.0	3.8	3.7	3.5	3.6	3.5	3.6	3.0
I feel that I am part of the University academic community	3.3	3.4	3.7	3.5	3.2	3.1	3.5	3.5	3.5	3.2
The financial assistance to support my research has been explained to me	3.3	3.4	3.8	3.5	3.4	3.3	3.4	3.4	3.6	3.1
<b>Research environment average</b>	<b>3.7</b>	<b>3.8</b>	<b>4.1</b>	<b>3.9</b>	<b>3.7</b>	<b>3.7</b>	<b>3.8</b>	<b>3.9</b>	<b>3.9</b>	<b>3.6</b>
<b>All questions</b>	<b>3.9</b>	<b>4.0</b>	<b>4.2</b>	<b>4.1</b>	<b>4.0</b>	<b>4.0</b>	<b>4.1</b>	<b>4.1</b>	<b>4.1</b>	<b>4.0</b>

1 = Strongly Disagree    2 = Disagree    3 = Uncertain    4 = Agree    5 = Strongly Agree

**Table 5: Candidate satisfaction with supervisor and research environment by faculty (September 2007)**

	Average Arts <i>n</i> = 37	Average Bus & Law <i>n</i> = 9	Average Educ <i>n</i> = 27	Average HMNBS <i>n</i> = 42	Average Sci & Tech <i>n</i> = 53	Average Uni <i>n</i> = 168
<b>My supervisor .....</b>						
has directed me to resources useful for starting my project	4.5	3.1	4.1	4.3	4.0	4.2
demonstrates expertise in my research topic	4.7	3.2	4.1	4.4	4.3	4.3
effectively communicates his/her expertise	4.5	4.2	4.6	4.6	4.3	4.5
encourages me in my research	4.5	4.1	4.7	4.6	4.5	4.5
requires me to think independently	4.7	4.3	4.8	4.7	4.7	4.7
is available for discussion when needed	4.4	4.2	4.5	4.3	4.3	4.4
gives competent advice on research methodology when asked	4.5	4.2	4.7	4.5	4.2	4.4
requires me to plan my work and meet deadlines	4.3	3.8	3.8	4.4	4.2	4.2
provides timely feedback on written work	4.2	4.0	4.4	4.3	4.1	4.2
provides constructive criticism	4.4	4.3	4.4	4.5	4.5	4.4
promotes opportunities for self direction	4.4	4.4	4.7	4.6	4.6	4.6
<b>Supervision average</b>	<b>4.5</b>	<b>4.0</b>	<b>4.4</b>	<b>4.5</b>	<b>4.3</b>	<b>4.4</b>
<b>Research environment</b>						
I have been given an adequate introduction to the School and facilities	3.9	3.7	4.2	3.7	3.5	3.8
I have been advised about School supervision practices	3.9	3.3	4.4	3.8	3.7	3.9
I have adequate workspace to conduct my research	3.3	3.7	3.4	3.3	3.7	3.5
I have adequate access to the facilities I need for my research	3.9	3.4	3.7	3.5	3.3	3.6
I am aware of the standards expected for my degree	4.3	4.4	4.5	4.0	4.0	4.2
I have opportunities to develop my presentation skills	3.4	4.3	3.7	4.0	3.8	3.8
I am encouraged to participate in seminars etc	3.6	4.3	4.2	3.9	3.9	3.9
I am encouraged to write papers or regular research reports	3.5	3.0	3.5	3.6	4.1	3.7
I am encouraged to present my work at major conferences	3.5	3.2	3.4	3.6	3.9	3.6
I am offered some financial support to attend conferences	2.8	3.0	2.9	3.1	3.2	3.0
I feel that I am part of the University academic community	2.7	2.8	3.7	3.5	3.2	3.2
The financial assistance to support my research has been explained to me	2.9	2.9	3.2	3.0	3.3	3.1
<b>Research environment average</b>	<b>3.5</b>	<b>3.5</b>	<b>3.7</b>	<b>3.6</b>	<b>3.6</b>	<b>3.6</b>
<b>All questions</b>	<b>4.0</b>	<b>3.7</b>	<b>4.1</b>	<b>4.0</b>	<b>4.0</b>	<b>4.0</b>

1 = Strongly Disagree    2 = Disagree    3 = Uncertain    4 = Agree    5 = Strongly Agree

**Table 6: Comparison over time of satisfaction with supervisor and research environment: Faculty of Arts**

	Feb 1999 n=84	Oct 1999 n=135	Oct 2000 n=133	Oct 2001 n=116	Oct 2002 n=44	Nov 2003 n=57	Oct 2004 n=107	Sep 2005 n=48	Sep 2006 n=48	Sep 2007 n=37
<b>My supervisor:</b>										
has directed me to resources useful for starting my project	4.1	4.3	4.4	4.4	4.0	4.3	4.3	4.3	4.4	4.5
demonstrates expertise in my research topic	4.1	4.2	4.2	4.4	4.2	4.2	4.3	4.3	4.6	4.7
effectively communicates his/her expertise	4.3	4.3	4.3	4.5	4.3	4.3	4.4	4.5	4.7	4.5
encourages me in my research	4.5	4.5	4.6	4.6	4.4	4.5	4.4	4.6	4.6	4.5
requires me to think independently	4.6	4.6	4.7	4.8	4.5	4.8	4.7	4.7	4.7	4.7
is available for discussion when needed	4.3	4.3	4.4	4.4	4.0	4.2	4.3	4.5	4.5	4.4
gives competent advice on research methodology when asked	4.1	4.3	4.4	4.4	4.2	4.3	4.4	4.4	4.6	4.5
requires me to plan my work and meet deadlines	4.1	4.1	4.2	4.1	4.1	4.0	4.2	4.3	4.4	4.3
provides timely feedback on written work	4.3	4.2	4.4	4.3	4.1	4.0	4.2	4.4	4.3	4.2
provides constructive criticism	4.4	4.4	4.4	4.4	4.4	4.4	4.3	4.5	4.5	4.4
promotes opportunities for self direction	4.2	4.5	4.5	4.6	4.5	4.5	4.6	4.7	4.7	4.4
<b>Supervision average</b>	<b>4.3</b>	<b>4.3</b>	<b>4.4</b>	<b>4.4</b>	<b>4.2</b>	<b>4.3</b>	<b>4.4</b>	<b>4.5</b>	<b>4.5</b>	<b>4.5</b>
<b>Research environment:</b>										
I have been given an adequate introduction to the School and facilities	3.3	3.5	3.9	3.8	3.4	3.2	3.5	3.7	3.9	3.9
I have been advised about School supervision practices	3.3	3.7	3.9	3.8	3.4	3.4	3.8	3.8	4.1	3.9
I have adequate workspace to conduct my research	3.7	3.9	4.6	4.1	3.9	3.8	3.9	4.3	4.3	3.3
I have adequate access to the facilities I need for my research	3.7	3.8	4.2	3.9	3.8	4.1	4.0	4.3	4.2	3.9
I am aware of the standards expected for my degree	3.9	4.1	4.2	4.2	4.0	4.2	4.1	4.2	4.4	4.3
I have opportunities to develop my presentation skills	3.5	3.9	4.3	3.9	3.6	3.9	3.9	4.1	4.1	3.4
I am encouraged to participate in seminars etc	3.4	4.0	4.3	3.9	3.6	3.3	3.7	3.8	4.2	3.6
I am encouraged to write papers or regular research reports	3.5	3.7	4.0	3.8	3.5	3.7	3.7	3.7	4.1	3.5
I am encouraged to present my work at major conferences	3.0	3.6	4.1	3.7	3.3	3.5	3.7	3.7	3.9	3.5
I am offered some financial support to attend conferences	3.1	3.2	4.0	3.6	3.3	3.1	3.6	3.4	4.0	2.8
I feel that I am part of the University academic community	2.9	3.2	3.6	3.3	2.7	2.6	3.1	3.2	3.5	2.7
The financial assistance to support my research has been explained to me	3.2	3.1	4.0	3.6	3.2	3.0	3.3	3.5	4.0	2.9
<b>Research environment average</b>	<b>3.4</b>	<b>3.7</b>	<b>4.1</b>	<b>3.8</b>	<b>3.5</b>	<b>3.5</b>	<b>3.7</b>	<b>3.8</b>	<b>4.1</b>	<b>3.5</b>
<b>All questions</b>	<b>3.8</b>	<b>4.0</b>	<b>4.2</b>	<b>4.1</b>	<b>3.8</b>	<b>3.9</b>	<b>4.0</b>	<b>4.2</b>	<b>4.3</b>	<b>4.0</b>

1 = Strongly Disagree    2 = Disagree    3 = Uncertain    4 = Agree    5 = Strongly Agree

**Table 7: Comparison over time of satisfaction with supervisor and research environment: Faculty of Business and Law**

	Feb 1999 n=17	Oct 1999 n=36	Oct 2000 n=39	Oct 2001 n=33	Oct 2002 n=8	Nov 2003 n=17	Oct 2004 n=42	Sep 2005 n=26	Sep 2006 n=25	Sep 2007 n=9
<b>My supervisor:</b>										
has directed me to resources useful for starting my project	4.1	4.0	4.6	4.5	4.7	4.1	4.4	4.2	4.2	3.1
demonstrates expertise in my research topic	4.4	4.2	4.5	4.6	4.5	4.0	4.4	4.0	4.0	3.2
effectively communicates his/her expertise	4.4	4.3	4.5	4.5	4.5	4.0	4.4	4.2	4.3	4.2
encourages me in my research	4.6	4.6	4.5	4.7	4.7	4.5	4.5	4.2	4.4	4.1
requires me to think independently	4.7	4.7	4.6	4.8	4.7	4.7	4.5	4.3	4.5	4.3
is available for discussion when needed	4.3	4.4	4.3	4.4	4.8	4.2	4.4	4.2	4.3	4.2
gives competent advice on research methodology when asked	4.5	4.1	4.4	4.5	4.5	4.3	4.5	4.3	4.6	4.2
requires me to plan my work and meet deadlines	4.1	4.0	4.3	4.3	4.8	4.2	4.3	4.3	4.3	3.8
provides timely feedback on written work	4.3	4.2	4.2	4.2	4.8	3.9	4.3	4.2	4.4	4.0
provides constructive criticism	4.4	4.3	4.5	4.6	4.6	4.4	4.4	4.3	4.6	4.3
promotes opportunities for self direction	4.4	4.5	4.5	4.5	4.7	4.5	4.5	4.0	4.5	4.4
<b>Supervision average</b>	<b>4.4</b>	<b>4.3</b>	<b>4.5</b>	<b>4.5</b>	<b>4.7</b>	<b>4.3</b>	<b>4.4</b>	<b>4.2</b>	<b>4.4</b>	<b>4.0</b>
<b>Research environment:</b>										
I have been given an adequate introduction to the School and facilities	3.6	3.8	4.4	4.1	4.5	3.7	4.2	3.4	3.9	3.7
I have been advised about School supervision practices	3.7	3.8	4.1	4.2	4.0	3.5	3.7	3.6	3.8	3.3
I have adequate workspace to conduct my research	3.7	4.2	4.4	4.2	5.0	4.2	4.3	3.2	3.6	3.7
I have adequate access to the facilities I need for my research	3.8	4.0	4.3	4.3	4.7	4.2	4.3	3.6	3.8	3.4
I am aware of the standards expected for my degree	4.1	4.2	4.3	4.4	4.5	4.5	4.3	3.8	4.3	4.4
I have opportunities to develop my presentation skills	4.1	4.0	4.4	4.4	4.8	3.9	4.4	3.8	4.0	4.3
I am encouraged to participate in seminars etc	4.1	4.1	4.2	4.3	4.2	4.0	4.5	3.7	4.0	4.3
I am encouraged to write papers or regular research reports	3.9	3.9	4.4	4.5	4.5	3.9	4.3	3.8	4.0	3.0
I am encouraged to present my work at major conferences	3.0	3.8	4.4	4.3	4.2	4.1	4.3	3.4	3.5	3.2
I am offered some financial support to attend conferences	3.2	3.3	3.9	3.6	3.0	4.2	3.7	2.8	3.2	3.0
I feel that I am part of the University academic community	3.4	3.3	3.8	4.0	3.8	3.7	4.0	2.9	2.8	2.8
The financial assistance to support my research has been explained to me	3.4	3.3	3.6	3.8	4.5	4.1	3.6	3.0	3.2	2.9
<b>Research environment average</b>	<b>3.7</b>	<b>3.8</b>	<b>4.2</b>	<b>4.2</b>	<b>4.3</b>	<b>4.0</b>	<b>4.1</b>	<b>3.4</b>	<b>3.7</b>	<b>3.5</b>
<b>All questions</b>	<b>4.0</b>	<b>4.1</b>	<b>4.3</b>	<b>4.3</b>	<b>4.5</b>	<b>4.1</b>	<b>4.3</b>	<b>3.8</b>	<b>4.0</b>	<b>3.7</b>

1 = Strongly Disagree    2 = Disagree    3 = Uncertain    4 = Agree    5 = Strongly Agree

**Table 8: Comparison over time of satisfaction with supervisor and research environment: Faculty of Education**

	Feb 1999 n=49	Oct 1999 n=87	Oct 2000 n=92	Oct 2001 n=92	Oct 2002 n=53	Nov 2003 n=0	Oct 2004 n=79	Sep 2005 n=46	Sep 2006 n=45	Sep 2007 n=27
<b>My supervisor:</b>										
has directed me to resources useful for starting my project	4.1	4.3	4.4	4.4	4.3		4.2	4.5	4.4	4.1
demonstrates expertise in my research topic	4.2	4.3	4.3	4.4	4.2		4.3	4.3	4.5	4.1
effectively communicates his/her expertise	4.3	4.3	4.4	4.4	4.4		4.4	4.4	4.5	4.6
encourages me in my research	4.6	4.5	4.5	4.5	4.6		4.5	4.4	4.5	4.7
requires me to think independently	4.5	4.5	4.6	4.7	4.7		4.7	4.6	4.8	4.8
is available for discussion when needed	4.2	4.3	4.4	4.3	4.4		4.3	4.5	4.5	4.5
gives competent advice on research methodology when asked	4.3	4.3	4.5	4.5	4.4		4.5	4.5	4.4	4.7
requires me to plan my work and meet deadlines	4.0	4.0	4.2	4.1	4.1		4.1	4.2	4.1	3.8
provides timely feedback on written work	4.0	4.2	4.4	4.1	4.3		4.3	4.3	4.3	4.4
provides constructive criticism	4.4	4.4	4.5	4.4	4.5		4.5	4.5	4.7	4.4
promotes opportunities for self direction	4.6	4.5	4.6	4.5	4.6		4.6	4.6	4.6	4.7
<b>Supervision average</b>	<b>4.3</b>	<b>4.3</b>	<b>4.4</b>	<b>4.4</b>	<b>4.4</b>		<b>4.4</b>	<b>4.4</b>	<b>4.5</b>	<b>4.4</b>
<b>Research environment:</b>										
I have been given an adequate introduction to the School and facilities	4.0	4.0	4.3	3.9	4.2		4.1	4.3	4.1	4.2
I have been advised about School supervision practices	3.7	3.8	4.3	4.0	4.2		4.0	4.2	4.2	4.4
I have adequate workspace to conduct my research	3.9	4.1	4.6	4.4	4.3		3.9	3.9	4.1	3.4
I have adequate access to the facilities I need for my research	4.0	4.1	4.4	4.2	4.2		4.1	4.2	4.2	3.7
I am aware of the standards expected for my degree	4.2	4.1	4.2	4.3	4.2		4.4	4.4	4.4	4.5
I have opportunities to develop my presentation skills	3.9	3.8	4.2	4.1	4.0		4.0	4.1	4.1	3.7
I am encouraged to participate in seminars etc	3.8	3.9	4.4	4.2	4.1		4.1	4.2	4.1	4.2
I am encouraged to write papers or regular research reports	3.9	3.8	4.1	4.2	4.1		3.8	4.0	3.8	3.5
I am encouraged to present my work at major conferences	3.1	3.7	4.2	4.2	4.0		3.9	4.1	3.8	3.4
I am offered some financial support to attend conferences	3.4	3.5	4.0	3.6	3.6		3.5	3.8	3.6	2.9
I feel that I am part of the University academic community	3.5	3.4	3.8	3.7	3.4		3.4	3.8	3.6	3.7
The financial assistance to support my research has been explained to me	3.3	3.4	3.9	3.4	3.3		3.4	3.7	3.5	3.2
<b>Research environment average</b>	<b>3.7</b>	<b>3.8</b>	<b>4.2</b>	<b>4.0</b>	<b>4.0</b>		<b>3.9</b>	<b>4.1</b>	<b>4.0</b>	<b>3.7</b>
<b>All questions</b>	<b>4.0</b>	<b>4.1</b>	<b>4.3</b>	<b>4.2</b>	<b>4.2</b>		<b>4.1</b>	<b>4.3</b>	<b>4.2</b>	<b>4.1</b>

1 = Strongly Disagree    2 = Disagree    3 = Uncertain    4 = Agree    5 = Strongly Agree

\* There was a zero response from Education students in 2003. A new online annual review system was introduced that year and candidates were also invited to complete the HDR candidate survey online. The Faculty of Education did not participate in the online annual review process (a paper-based process was used), but their candidates were invited to complete the survey online. Unfortunately none took up this opportunity.

**Table 9: Comparison over time of satisfaction with supervisor and research environment: Faculty of Health, Medicine, Nursing and Behavioural Sciences**

	Feb 1999 <i>n=48</i>	Oct 1999 <i>n=89</i>	Oct 2000 <i>n=107</i>	Oct 2001 <i>n=114</i>	Oct 2002 <i>n=77</i>	Nov 2003 <i>n=36</i>	Oct 2004 <i>n=88</i>	Sep 2005 <i>n=55</i>	Sep 2006 <i>n=56</i>	Sep 2007 <i>n=42</i>
<b>My supervisor:</b>										
has directed me to resources useful for starting my project	4.1	4.3	4.3	4.3	4.3	4.1	4.3	4.2	4.3	4.3
demonstrates expertise in my research topic	4.1	4.3	4.3	4.3	4.3	4.1	4.3	4.5	4.4	4.4
effectively communicates his/her expertise	4.2	4.4	4.4	4.4	4.3	4.2	4.2	4.5	4.4	4.6
encourages me in my research	4.4	4.4	4.4	4.4	4.4	4.2	4.4	4.6	4.5	4.6
requires me to think independently	4.6	4.7	4.7	4.7	4.5	4.4	4.6	4.8	4.6	4.7
is available for discussion when needed	4.1	4.3	4.3	4.2	4.1	3.6	4.2	4.3	4.3	4.3
gives competent advice on research methodology when asked	4.4	4.5	4.5	4.4	4.3	4.0	4.3	4.3	4.3	4.5
requires me to plan my work and meet deadlines	4.1	4.1	4.1	4.1	4.1	3.9	4.1	4.1	4.3	4.4
provides timely feedback on written work	3.9	4.2	4.2	4.3	4.2	3.6	4.0	4.1	4.3	4.3
provides constructive criticism	4.2	4.4	4.4	4.4	4.4	4.0	4.3	4.4	4.4	4.5
promotes opportunities for self direction	4.3	4.4	4.5	4.6	4.4	4.3	4.5	4.5	4.5	4.6
<b>Supervision average</b>	<b>4.2</b>	<b>4.4</b>	<b>4.4</b>	<b>4.4</b>	<b>4.3</b>	<b>4.0</b>	<b>4.3</b>	<b>4.4</b>	<b>4.4</b>	<b>4.5</b>
<b>Research environment:</b>										
I have been given an adequate introduction to the School and facilities	3.7	3.4	3.7	3.7	3.4	3.7	3.7	3.8	3.9	3.7
I have been advised about School supervision practices	3.2	3.4	3.8	3.6	3.6	3.2	3.5	3.7	3.7	3.8
I have adequate workspace to conduct my research	3.7	3.8	4.1	3.9	3.7	3.7	3.8	4.1	4.1	3.3
I have adequate access to the facilities I need for my research	4.0	3.8	4.0	3.8	3.9	3.7	3.9	3.9	4.0	3.5
I am aware of the standards expected for my degree	4.1	3.8	4.1	4.1	3.9	4.0	4.1	4.2	4.3	4.0
I have opportunities to develop my presentation skills	4.0	4.0	4.3	4.3	4.0	4.2	4.1	4.3	4.3	4.0
I am encouraged to participate in seminars etc	4.1	3.9	4.2	4.0	4.0	3.8	4.0	4.2	4.2	3.9
I am encouraged to write papers or regular research reports	4.0	3.8	4.0	4.0	3.8	3.8	3.9	3.9	4.0	3.6
I am encouraged to present my work at major conferences	3.6	3.6	4.0	4.0	4.1	3.7	3.8	4.1	3.9	3.6
I am offered some financial support to attend conferences	3.9	3.4	3.9	3.8	3.9	3.4	3.7	3.4	3.4	3.1
I feel that I am part of the University academic community	3.5	3.4	3.6	3.3	3.1	2.9	3.4	3.5	3.4	3.5
The financial assistance to support my research has been explained to me	3.3	3.3	3.4	3.5	3.3	3.1	3.2	3.4	3.6	3.0
<b>Research environment average</b>	<b>3.7</b>	<b>3.6</b>	<b>3.9</b>	<b>3.8</b>	<b>3.7</b>	<b>3.6</b>	<b>3.8</b>	<b>3.9</b>	<b>3.9</b>	<b>3.6</b>
<b>All questions</b>	<b>4.0</b>	<b>4.0</b>	<b>4.1</b>	<b>4.1</b>	<b>4.0</b>	<b>3.8</b>	<b>4.0</b>	<b>4.1</b>	<b>4.1</b>	<b>4.0</b>

1 = Strongly Disagree    2 = Disagree    3 = Uncertain    4 = Agree    5 = Strongly Agree

**Table 10: Comparison over time of satisfaction with supervisor and research environment: Faculty of Science and Technology**

	Feb 1999 <i>n=55</i>	Oct 1999 <i>n=108</i>	Oct 2000 <i>n=144</i>	Oct 2001 <i>n=152</i>	Oct 2002 <i>n=87</i>	Nov 2003 <i>n=70</i>	Oct 2004 <i>n=137</i>	Sep 2005 <i>n=64</i>	Sep 2006 <i>n=76</i>	Sep 2007 <i>n=53</i>
<b>My supervisor:</b>										
has directed me to resources useful for starting my project	4.1	4.2	4.4	4.3	4.1	4.0	4.2	4.2	4.0	4.0
demonstrates expertise in my research topic	3.9	4.2	4.3	4.3	4.2	4.3	4.2	4.1	4.1	4.3
effectively communicates his/her expertise	4.0	4.3	4.4	4.3	4.0	4.2	4.1	4.1	4.0	4.3
encourages me in my research	4.3	4.6	4.5	4.5	4.3	4.3	4.3	4.3	4.3	4.5
requires me to think independently	4.4	4.6	4.6	4.6	4.5	4.6	4.5	4.7	4.6	4.7
is available for discussion when needed	4.2	4.4	4.3	4.2	3.9	4.1	4.2	4.2	4.2	4.3
gives competent advice on research methodology when asked	4.1	4.3	4.4	4.2	4.2	4.1	4.3	4.2	4.1	4.2
requires me to plan my work and meet deadlines	3.7	3.9	4.0	3.9	3.9	4.1	4.0	4.1	4.1	4.2
provides timely feedback on written work	3.9	4.2	4.4	4.2	3.9	4.2	4.1	4.0	3.9	4.1
provides constructive criticism	4.2	4.3	4.4	4.4	4.1	4.3	4.3	4.2	4.2	4.5
promotes opportunities for self direction	4.3	4.4	4.5	4.4	4.3	4.4	4.3	4.3	4.4	4.6
<b>Supervision average</b>	<b>4.1</b>	<b>4.3</b>	<b>4.4</b>	<b>4.3</b>	<b>4.1</b>	<b>4.2</b>	<b>4.2</b>	<b>4.2</b>	<b>4.2</b>	<b>4.0</b>
<b>Research environment:</b>										
I have been given an adequate introduction to the School and facilities	3.6	3.8	4.0	3.8	3.6	3.6	3.7	3.6	3.6	3.5
I have been advised about School supervision practices	3.3	3.6	3.9	3.8	3.7	3.6	3.7	3.8	3.7	3.7
I have adequate workspace to conduct my research	3.9	3.9	4.2	4.1	4.0	3.8	3.8	3.9	3.6	3.7
I have adequate access to the facilities I need for my research	3.5	3.8	3.8	3.7	3.8	3.6	3.8	3.8	3.3	3.3
I am aware of the standards expected for my degree	3.9	4.2	4.1	4.1	4.0	4.0	4.1	4.2	4.0	4.0
I have opportunities to develop my presentation skills	4.0	4.2	4.4	4.3	4.1	4.2	4.2	4.1	4.3	3.8
I am encouraged to participate in seminars etc	4.0	4.1	4.3	4.1	4.1	4.1	4.2	4.2	4.3	3.9
I am encouraged to write papers or regular research reports	4.1	4.2	4.3	4.2	4.1	4.1	4.3	4.2	4.2	4.1
I am encouraged to present my work at major conferences	3.8	4.2	4.3	4.2	3.9	3.9	4.1	4.0	4.1	3.9
I am offered some financial support to attend conferences	3.6	3.8	4.0	4.0	3.8	3.7	3.7	3.7	3.7	3.2
I feel that I am part of the University academic community	3.5	3.6	3.9	3.8	3.5	3.5	3.8	3.7	3.7	3.2
The financial assistance to support my research has been explained to me	3.4	3.5	3.9	3.6	3.3	3.5	3.7	3.4	3.5	3.3
<b>Research environment average</b>	<b>3.7</b>	<b>3.9</b>	<b>4.1</b>	<b>4.0</b>	<b>3.8</b>	<b>3.8</b>	<b>3.9</b>	<b>3.9</b>	<b>3.8</b>	<b>3.6</b>
<b>All questions</b>	<b>3.9</b>	<b>4.1</b>	<b>4.2</b>	<b>4.1</b>	<b>3.9</b>	<b>4.1</b>	<b>4.1</b>	<b>4.1</b>	<b>4.0</b>	<b>4.0</b>

1 = Strongly Disagree    2 = Disagree    3 = Uncertain    4 = Agree    5 = Strongly Agree

**Table 11: Satisfaction with supervisor and research environment by enrolment mode (September 2007)**

	Full-time					Part-time						
	Ave <i>n=103</i>	Percentage for each score					Ave <i>n=65</i>	Percentage for each score				
		1	2	3	4	5		1	2	3	4	5
<b>My supervisor .....</b>												
has directed me to resources useful for starting my project	4.5	0%	5%	7%	25%	63%	4.1	6%	5%	3%	46%	40%
demonstrates expertise in my research topic	4.5	0%	2%	8%	28%	62%	4.2	5%	6%	8%	25%	56%
effectively communicates his/her expertise	4.6	1%	1%	3%	29%	66%	4.3	2%	6%	8%	32%	52%
encourages me in my research	4.7	1%	0%	2%	24%	73%	4.3	5%	6%	8%	20%	62%
requires me to think independently	4.7	0%	1%	2%	18%	79%	4.6	2%	0%	3%	25%	71%
is available for discussion when needed	4.4	1%	0%	5%	42%	52%	4.2	6%	0%	12%	26%	55%
gives competent advice on research methodology when asked	4.6	2%	1%	4%	24%	69%	4.2	6%	3%	8%	26%	57%
requires me to plan my work and meet deadlines	4.4	2%	3%	4%	32%	59%	4.1	7%	2%	15%	31%	46%
provides timely feedback on written work	4.4	3%	2%	5%	29%	61%	4.2	8%	0%	9%	28%	55%
provides constructive criticism	4.6	1%	2%	3%	26%	68%	4.3	3%	6%	5%	25%	61%
promotes opportunities for self direction	4.7	0%	1%	3%	24%	73%	4.4	3%	0%	6%	31%	60%
<b>Supervision average</b>	<b>4.6</b>	<b>1%</b>	<b>2%</b>	<b>4%</b>	<b>27%</b>	<b>66%</b>	<b>4.3</b>	<b>5%</b>	<b>3%</b>	<b>8%</b>	<b>29%</b>	<b>56%</b>
<b>Research environment</b>												
I have been given an adequate introduction to the School and facilities	3.9	4%	8%	12%	44%	32%	3.7	11%	5%	14%	41%	30%
I have been advised about School supervision practices	4.0	0%	8%	14%	44%	34%	3.7	13%	3%	14%	38%	32%
I have adequate workspace to conduct my research	4.0	1%	10%	11%	43%	35%	3.9	9%	6%	9%	36%	40%
I have adequate access to the facilities I need for my research	3.8	6%	6%	19%	41%	27%	3.7	8%	8%	20%	34%	30%
I am aware of the standards expected for my degree	4.3	1%	1%	8%	50%	41%	4.1	5%	6%	6%	45%	38%
I have opportunities to develop my presentation skills	4.1	1%	8%	15%	35%	40%	3.9	5%	5%	15%	44%	31%
I am encouraged to participate in seminars etc	4.0	2%	12%	10%	34%	42%	3.8	6%	6%	18%	35%	34%
I am encouraged to write papers or regular research reports	4.1	0%	9%	12%	35%	43%	3.5	11%	5%	31%	29%	24%
I am encouraged to present my work at major conferences	4.1	0%	6%	17%	35%	42%	3.5	11%	8%	16%	46%	18%
I am offered some financial support to attend conferences	3.7	8%	13%	10%	38%	32%	2.9	25%	14%	25%	19%	18%
I feel that I am part of the University academic community	3.6	2%	16%	27%	30%	26%	3.0	23%	6%	30%	28%	13%
The financial assistance to support my research has been explained to me	3.6	8%	9%	23%	38%	21%	3.0	25%	7%	26%	26%	16%
<b>Research environment average</b>	<b>3.9</b>	<b>3%</b>	<b>9%</b>	<b>15%</b>	<b>39%</b>	<b>35%</b>	<b>3.6</b>	<b>13%</b>	<b>7%</b>	<b>19%</b>	<b>35%</b>	<b>27%</b>
<b>All questions</b>	<b>4.2</b>	<b>2%</b>	<b>5%</b>	<b>10%</b>	<b>33%</b>	<b>50%</b>	<b>3.9</b>	<b>9%</b>	<b>5%</b>	<b>13%</b>	<b>32%</b>	<b>41%</b>

1 = Strongly Disagree    2 = Disagree    3 = Uncertain    4 = Agree    5 = Strongly Agree

**Table 12: Satisfaction with supervisor and research environment by study mode (September 2007)**

	On campus					Off campus						
	Ave n=114	Percentage for each score					Ave n=54	Percentage for each score				
		1	2	3	4	5		1	2	3	4	5
<b>My supervisor .....</b>												
has directed me to resources useful for starting my project	4.2	3%	5%	5%	31%	57%	4.0	2%	4%	8%	39%	47%
demonstrates expertise in my research topic	4.4	2%	3%	8%	29%	58%	4.2	2%	2%	8%	37%	52%
effectively communicates his/her expertise	4.5	1%	4%	5%	28%	62%	4.4	2%	2%	4%	35%	57%
encourages me in my research	4.5	3%	2%	4%	24%	68%	4.5	2%	4%	4%	20%	70%
requires me to think independently	4.7	0%	1%	3%	22%	75%	4.7	2%	0%	2%	19%	78%
is available for discussion when needed	4.4	3%	0%	6%	40%	51%	4.4	4%	0%	11%	26%	59%
gives competent advice on research methodology when asked	4.4	4%	2%	7%	24%	63%	4.6	2%	2%	2%	28%	67%
requires me to plan my work and meet deadlines	4.3	4%	4%	5%	32%	56%	3.8	4%	0%	14%	33%	49%
provides timely feedback on written work	4.2	5%	2%	5%	28%	60%	4.1	4%	0%	12%	29%	55%
provides constructive criticism	4.5	2%	3%	4%	25%	66%	4.4	2%	6%	2%	28%	62%
promotes opportunities for self direction	4.6	1%	1%	4%	25%	69%	4.6	2%	0%	4%	30%	65%
<b>Supervision average</b>	<b>4.4</b>	<b>2%</b>	<b>2%</b>	<b>5%</b>	<b>28%</b>	<b>62%</b>	<b>4.3</b>	<b>2%</b>	<b>2%</b>	<b>6%</b>	<b>29%</b>	<b>60%</b>
<b>Research environment</b>												
I have been given an adequate introduction to the School and facilities	3.7	7%	8%	13%	40%	31%	3.8	6%	4%	12%	48%	31%
I have been advised about School supervision practices	3.9	5%	8%	14%	42%	31%	3.9	4%	2%	14%	41%	39%
I have adequate workspace to conduct my research	3.7	4%	9%	9%	44%	33%	2.9	5%	5%	13%	29%	47%
I have adequate access to the facilities I need for my research	3.7	7%	6%	19%	42%	27%	3.3	6%	9%	21%	32%	32%
I am aware of the standards expected for my degree	4.2	3%	4%	6%	50%	38%	4.3	2%	2%	9%	43%	44%
I have opportunities to develop my presentation skills	3.9	2%	8%	15%	40%	35%	3.6	4%	4%	17%	35%	40%
I am encouraged to participate in seminars etc	3.9	4%	12%	11%	33%	40%	3.9	2%	4%	19%	38%	37%
I am encouraged to write papers or regular research reports	3.8	4%	11%	15%	33%	37%	3.4	6%	0%	29%	31%	33%
I am encouraged to present my work at major conferences	3.8	4%	8%	17%	37%	34%	3.3	7%	4%	15%	46%	28%
I am offered some financial support to attend conferences	3.2	12%	13%	13%	38%	25%	2.6	20%	16%	20%	16%	29%
I feel that I am part of the University academic community	3.3	10%	14%	25%	29%	21%	3.1	12%	8%	34%	28%	18%
The financial assistance to support my research has been explained to me	3.3	12%	12%	25%	33%	18%	2.8	20%	0%	22%	36%	22%
<b>Research environment average</b>	<b>3.7</b>	<b>6%</b>	<b>9%</b>	<b>15%</b>	<b>38%</b>	<b>31%</b>	<b>3.4</b>	<b>8%</b>	<b>5%</b>	<b>19%</b>	<b>36%</b>	<b>33%</b>
<b>All questions</b>	<b>4.0</b>	<b>4%</b>	<b>6%</b>	<b>10%</b>	<b>33%</b>	<b>46%</b>	<b>3.8</b>	<b>5%</b>	<b>3%</b>	<b>12%</b>	<b>32%</b>	<b>47%</b>

1 = Strongly Disagree    2 = Disagree    3 = Uncertain    4 = Agree    5 = Strongly Agree

**Table 13: Summary of most positive comments about research experience (September 2007)**

<b>Most positive aspects of research experience</b>	<b>Number</b>
Supervision	61
Research experience (personal development/learning/research itself/skills)	19
Independence/freedom	14
Research environment	11
Library support/services	8
Supportive academic staff/School/admin staff	6
Distance education opportunities	4
Facilities/resources (incl. office space)	4
Administration	1
Financial support	1
HDR Workshop	1
HDR workshops - Ingleby	1
Opportunity to develop other skills	1
Quality of academic staff/quality of research group	1
Research Services/HDR Guide	1
Summer and Winter Schools	1
<b>Total respondents</b>	<b>135</b>

**Table 14: Summary of comments relating to least satisfactory aspects of research experience (September 2007)**

<b>Least positive aspects of research experience</b>	<b>Number</b>
Inadequate resources/facilities/access to (incl. office space)	24
Isolation/distance/off campus	22
Supervisor's lack of knowledge	13
Lack of networking/interaction between staff/students	8
Administration/bureaucracy (various levels of university) - accounts system	8
Lack of School/Faculty support for HDR research - school politics	6
IT services/facilities	6
Ethics administration	6
Financial support	4
Parking	3
Library support/services/resources - not enough journals	3
Lack of time for competing demands	3
Lack of opportunity/funding to attend symposiums/conferences/seminars	3
Too many progress reviews	1
Scholarships - lack of	1
Lack of staff to help with English tuition	1
Lack of communication/information/induction/orientation	1
Lack of interaction with other faculties	1
Coursework/placement organisation	1
DSO is very difficult to negotiate	1
Academic/research environment/research culture	1
<b>Total respondents</b>	<b>117</b>

**Table 15: Suggested improvements to the quality of research training (September 2007)**

<b>Suggested improvements</b>	<b>Number</b>
Improved research resources, facilities, workspace	16
More seminars/workshops (including for off-campus students, and after hours)	8
Improved academic/school/administrative staff support	8
Improved Library services/facilities/resources - more journals	6
Improved technical support	4
Improved IT support/services/facilities - free internet access	4
More seminars/workshops (including for off-campus students, and after hours) - Ingleby	3
More courses on data analysis/research methodology/software use/thesis writing	3
Increased financial support for conference attendance	3
Supervisor - better availability	2
More interaction/communication - with other research groups	2
More help with English writing	2
Improved supervisor training	2
Better supervisor/student ratio	2
Better ethics administration	2
Training - more online training	1
Survey about the HDR annual review process	1
Supervisor absence - more action to provide alternatives for students	1
Supervisor - more flexible meeting times for off campus students	1
Supervisor - better management from above	1
Supervisor - better knowledge	1
Student mentors	1
Show track records of supervisors (number of completions...etc)	1
Scholarships for part-time candidates	1
Reduce number of progress reviews	1
More structure at commencement	1
More progress reporting - at each phase	1
More presentation opportunitites	1
More part-time jobs for students	1
More on-line courses	1
More interaction with other universities	1
Ingleby workshops	1
Increased scholarship opportunities	1
Improved procedural information	1
Deakin publish refereed journals	1
Better induction - School level	1
Better induction - online	1
Better induction	1
<b>Total respondents</b>	<b>90</b>