

BURWOOD LINK

Connecting the community



DEAKIN
UNIVERSITY



WHAT IS THE BURWOOD LINK?

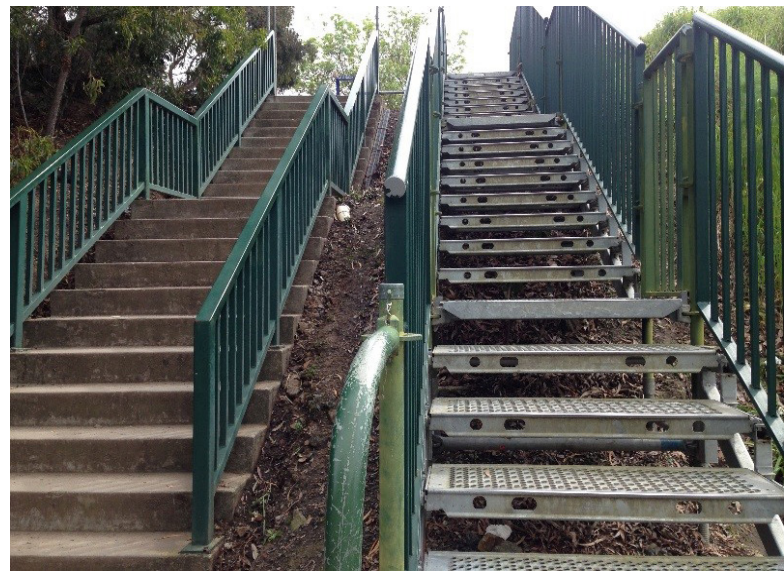
The Burwood Link is a pedestrian crossing over the Gardiners Creek Reserve between the Burwood Highway and Elgar Road sides of the Deakin University Melbourne Burwood Campus. It will improve accessibility, safety and convenience to users of the University's facilities and the reserve in general.

WHY IS IT REQUIRED?

ACCESSIBILITY

The Burwood Link will:

- Stop the discrimination against people with particular disabilities who are unable to cross the current Gardiners Creek crossing
- Allow for people in wheelchairs, those with prams and strollers, people on crutches and the elderly to cross the creek with ease
- Comply with the Disability Discrimination Act 1992 (DDA).



Current stairs between the two sides of the Burwood Campus

SAFETY

The Burwood Link will:

- Allow for a safe, 24 hour creek crossing for all pedestrians
- Increase safety by improved lighting and Wi-Fi connectivity to the SafeZone app
- Enable staff, students and the community to safely cross the Creek during times of flood
- Allow for those who walk their dogs off leash to continue to do so, reducing the potential for incidents.

ENVIRONMENT

The Burwood Link will:

- Remove over 40,000 pedestrian crossings per week from Gardiners Creek, reducing the impact on existing vegetation
- Provide users with a unique, 'tree top' walk experience
- Potentially reduce car traffic around the area with people more inclined to walk across the Link instead of driving between the Burwood Highway and the Elgar Road sides of the campus.

WHAT WILL IT LOOK LIKE?

DESIGN

The final design of the Burwood Link is the product of years of planning and community input.

The Burwood Link is a light, narrow and environmentally friendly crossing with a natural rusted steel look.

DESIGN SPECIFICATIONS

ELEMENT	DETAILS
Width	Constant 4m over the reserve, splayed to 6.4m at western end
Support structures within the Crown Reserve	1 'V' shaped pylon
Height of truss and balustrade	3.8m
Maximum height above ground level	14.9m
Length within Crown Reserve	113m
Total Length of Link	245m

LANDSCAPING

The landscaping and revegetation works at Gardiners Creek will be designed to match the current informal bushland landscape character of the creek and park, through the principles below:

- Continue informal park-like character, with no formal borders or edges to paths and planting
- Scattered overstorey of Acacia and Eucalypt species
- Pockets of understorey of Hop Goodenia, Lomandra, Cassinia and Dianella planting
- Ensure all new plantings are locally Indigenous
- Organic and native species mulch will be spread throughout planting islands.





Further information

Mike David

Project Manager,
Facilities Services

+61 3 9244 6244

mike.david@deakin.edu.au

deakin.edu.au/burwood-link

Deakin University CRICOS Provider Code 00113B



DEAKIN
UNIVERSITY