



Sustainability Commitments

2020 - 2030



Contents

We acknowledge the Traditional Custodians of the unceded lands and waterways on which Deakin University operates.

We pay our deep respect to the Ancestors and Elders of Wadawurrung Country, Gunditjmara Country, and Wurundjeri Country, as well as the Traditional Custodians of all the lands our students and staff come from, study and work on. We take seriously our commitment to Care for Country, following the examples that have been practised on this continent for many millennia, and to walk softly during our journeys on the Country that sustains us.

Message from the Vice-Chancellor	4
Our commitment	6
Thinking global, acting local	8
Procurement and Supply	10
Travel and Transport	12
Energy and Emissions	14
Waste	16
Water	18
Built Environment	20
Natural Environment	22



Message from the Vice-Chancellor

Deakin University sees a strong commitment to advancing sustainability through quality education, sustainable campus operations and research as non-negotiable – it is part of our core social contract.

Sustainability is one of our university values and underpins all five Impact Themes in our strategic plan *Deakin 2030: Ideas to Impact*.

Our sustainability practices are also deeply connected to our respect for the Traditional Custodians of the lands on which our campuses reside and the waterways that run alongside them. We acknowledge Elders past, present and emerging and thank them for nurturing and caring for Country, which sustains us all.

With over 65,000 students studying at Deakin, we are in the privileged position to educate and inspire society's future leaders, foster research solutions to local and global challenges, and use our campuses as living laboratories for field-scale innovations in sustainability.

We also have a significant responsibility to manage our own operational sustainability impacts. We view these through social, economic and environmental lenses – in particular by taking urgent and authentic action to mitigate and adapt to climate change, implement integrated water management principles and enhance the biodiversity of our campuses' natural environments.



To continue our leadership in sustainability, we are committed to mitigating all Scope 1 and Scope 2 carbon emissions by the end of 2025 and have developed our Climate Ready Campus vision: establishing the Geelong Waurin Ponds Campus as a living laboratory for sustainable development. This will enable us to work closely with our students, academics, researchers and key partners to deliver projects, undertake research and develop innovations.

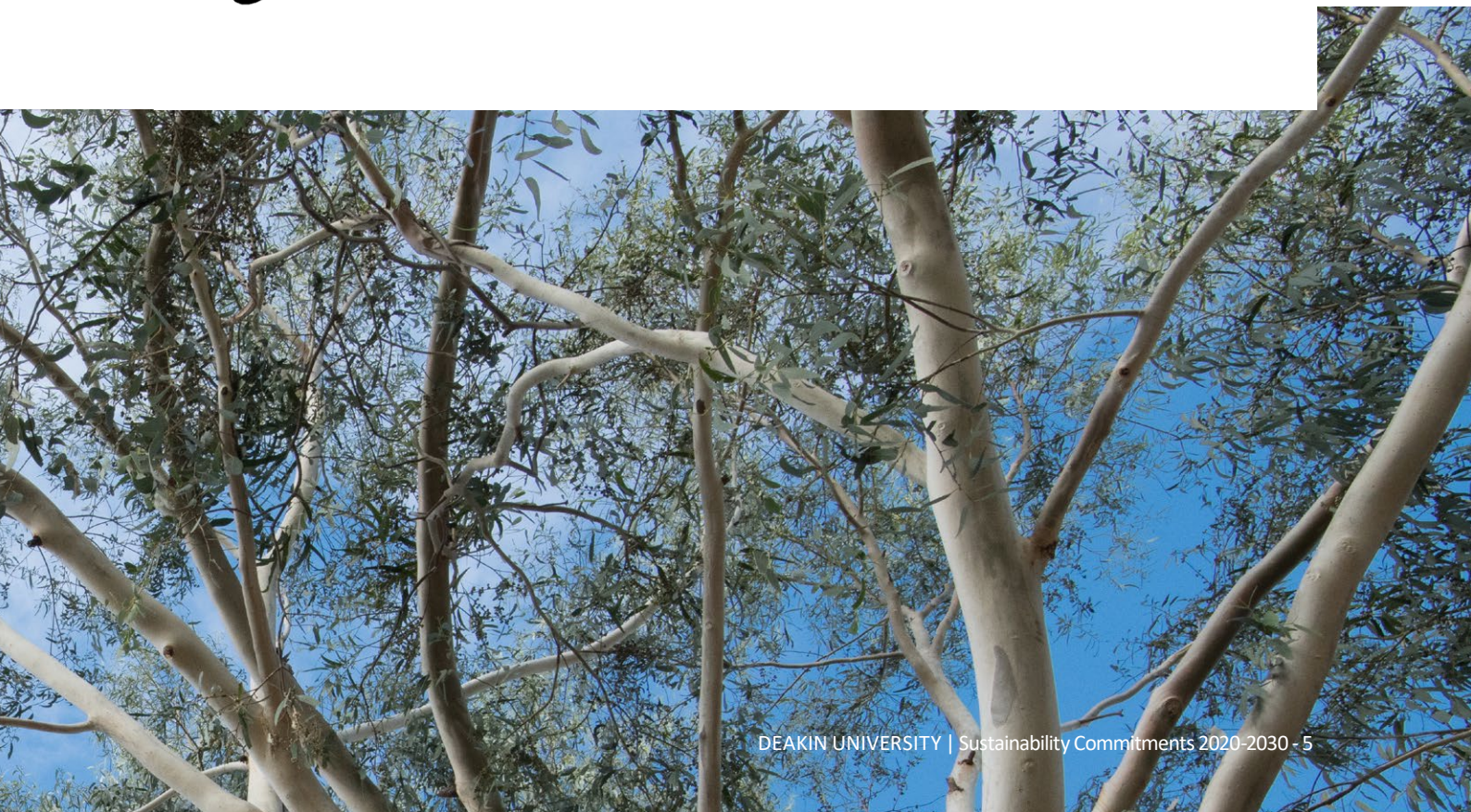


This document, *Deakin's Sustainability Commitments 2020 – 2030* outlines our sustainability plan and key milestones over the next decade. Aligned to the United Nations Sustainable Development Goals, and wholly supported by our strategic planning and governance across the University, these commitments are the next stage of Deakin's stewardship of the environment.

It represents our solemn promise to advance the sustainable operations of our campuses and demonstrates our strategic intent to model what it takes to deliver global sustainability.

Professor Iain Martin
Vice-Chancellor

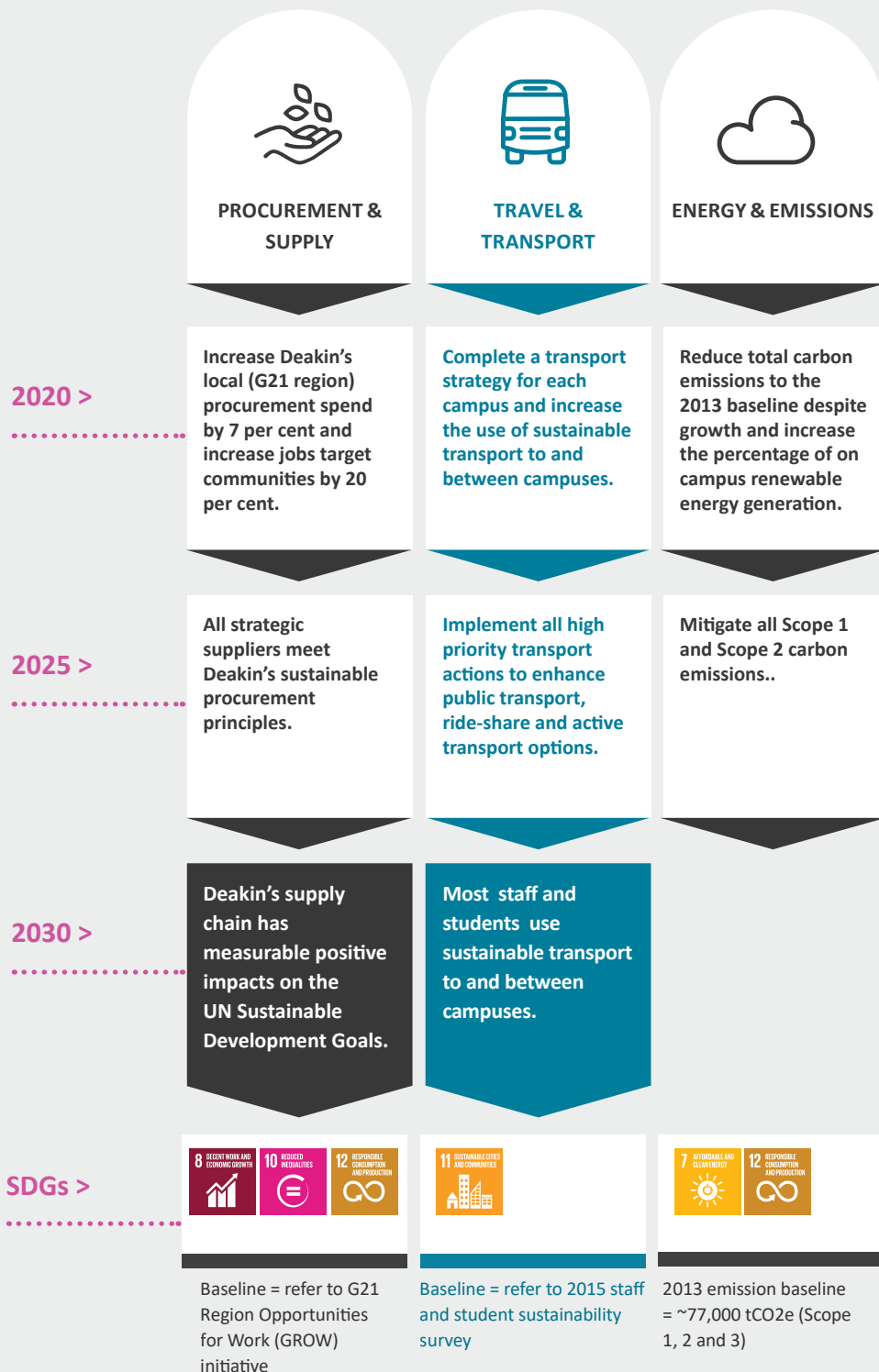
A handwritten signature in black ink, reading 'Iain Martin'.



Our commitment

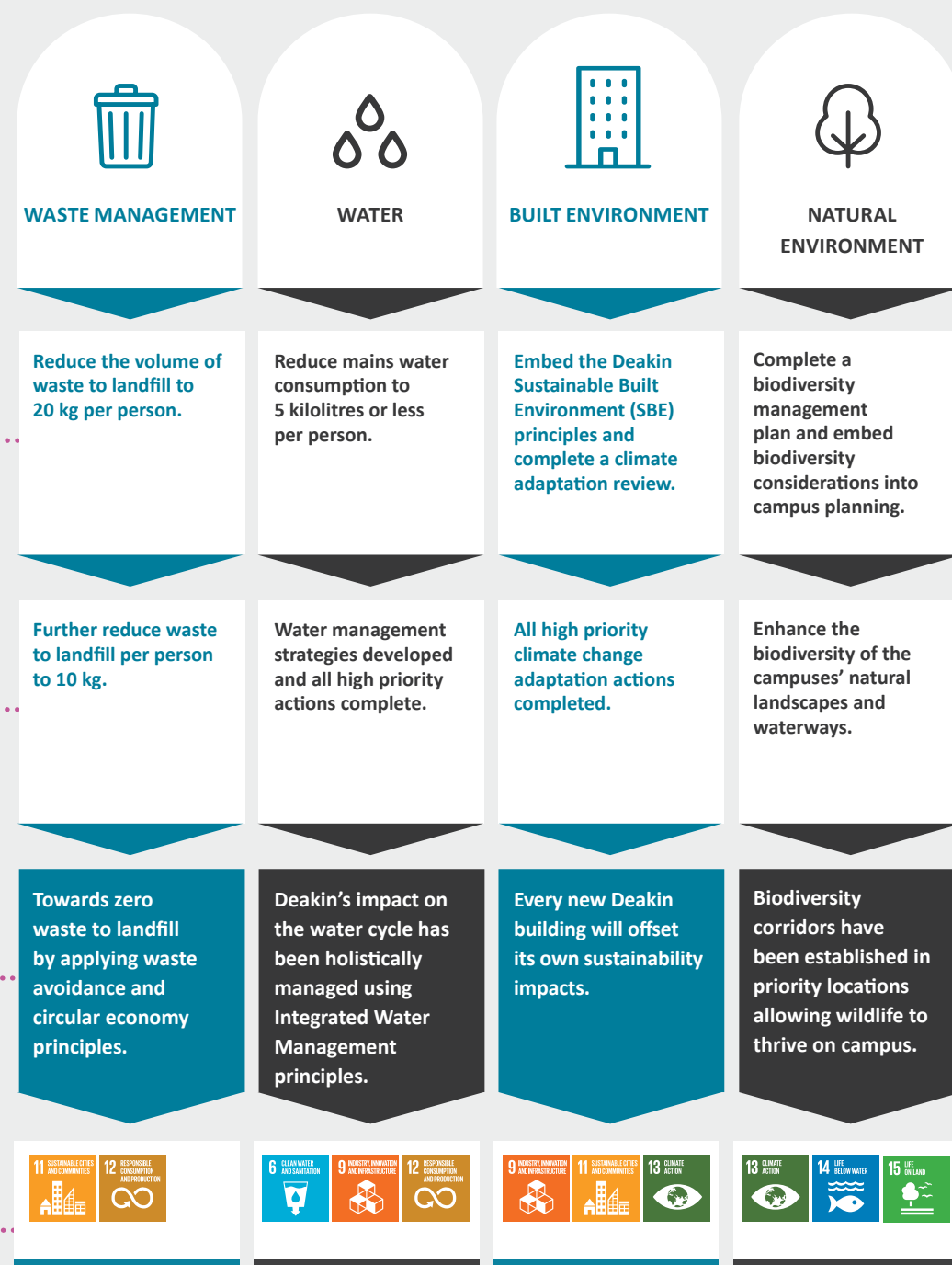
Sustainability is embedded within Deakin as one of our values, we care about our shared future and integrating economic, environmental and social dimensions of sustainability in all that we do.

To enable this, the University has established sustainability commitments with measurable targets set for 2020, 2025 and 2030. Since their launch in 2017, these commitments have grown to encompass new opportunities and tackle new sustainability challenges and through their alignment to the United Nations Sustainable Development Goals (SDGs), will result in sustainability benefits on-campus, within our communities and at a global level.



These commitments are underpinned by best practice policy, and a robust governance structure helps us make informed decisions and realise the targets. Each commitment has a dedicated working group to monitor progress and implement actions to achieve the goals. The University's Enterprise Sustainability Committee, chaired by the Chief Operating Officer, oversees these working groups and the ultimate achievement of the sustainability commitments.

We report annually against these commitments and contribution to the SDGs via the Deakin Annual Report and annual Sustainability Report.



2016 baseline = 38.6 kg per person (Person = EFTSL + FTE staff)

2013 baseline = ~187,000 KI total consumption, equivalent to 5kL per person (Person = EFTSL + FTE staff)

Thinking global, acting local

We're proud of our progress toward achieving our sustainability commitments and contribution to the Sustainable Development Goals.

Since 2017 we've implemented a wide range of plans, strategies and actions that demonstrate our values and create a springboard to achieve our 2025 and 2030 commitments.





As a signatory to the university sector's commitment to the SDGs, we approach sustainability holistically across the organisation..

The SDGs are a set of 17 goals and 169 targets adopted by all UN Member States in 2015 to end poverty, protect the planet and ensure prosperity for all.

Deakin's sustainability commitments are aligned to the SDGs and we are committed to advancing local actions that contribute to a global agenda for sustainable development by focusing on the following elements within our sustainability program:

Partnerships:

Develop and foster strategic partnerships that support Deakin's Sustainability commitments, teaching, research and our community.

Embedment:

Integrating sustainability principles in planning, governance and decision making across the University to ensure that the value is embedded across all aspects of the organisation.

Innovation:

Use the campuses as Living Laboratories to foster action based research, learning and innovation that supports Deakin's commitments and drives change in our communities, locally and globally.

Participation:

Create meaningful opportunities for students, staff and the broader Deakin community to participate and contribute to sustainability and provide opportunities for our students to acquire the knowledge and skills to promote sustainable development.

Engagement:

Report and communicate about sustainability at Deakin to transparently disclose performance, demonstrate leadership, advocate for sustainability and inspire others.

Procurement and Supply



The goods and services Deakin purchases, and the process to procure them, significantly impacts environmental, social and economic sustainability. Through the lenses of people, planet and purpose, we will drive sustainable procurement practices that create positive impacts toward the SDGs.

2020

Increase Deakin's local (G21 region) procurement spend by 7 per cent and increase jobs target communities by 20 per cent.

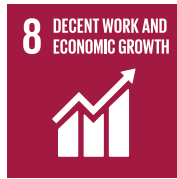
2025

All strategic suppliers meet Deakin's sustainable procurement principles.

2030

Deakin's supply chain has measurable positive impacts on the UN Sustainable Development Goals.

Contributing to the Sustainable Development Goals



Existing initiatives and planning

- Procurement policy suite and category management plans
- Procurement data and analytics
- Signatory to the G21 GROW Compact – an regional initiative to tackle place-based disadvantage and improve economic and social prosperity
- Ongoing involvement with the Australian Universities Procurement Network
- The University's 2020 Modern Slavery Statement and associated procurement practices.

Pathway

- Develop a Social Procurement Strategy, including a focus on Indigenous procurement opportunities.
- Undertake a procurement data management review, including measurement and reporting systems, economic impacts and SDG outcomes.
- Enhance and further embed sustainability considerations within category plans, contracts and market approach documents.
- Embed key principles within procurement processes to help drive the circular economy.

Travel and Transport



Sustainable transport plays a key role in the student, staff and visitor experience, enabling local precincts and reducing our emissions impacts. Through our strategic approach, we will advance accessible and sustainable transport solutions that support enriching, easy and engaging on-campus experiences.

2020

Complete a transport strategy for each campus and increase the use of sustainable transport to and between campuses.

2025

Implement all high priority transport actions to enhance public transport, ride-share and active transport options.

2030

The majority of staff and students with sustainable transport options, use thee for travel to and between campuses.



Contributing to the Sustainable Development Goals



Existing initiatives and planning

- Travel and transport survey data and campus specific transport strategies.
- Existing network of public transport options and on-campus active transport facilities.
- Deakin intercampus bus service, which provides transport between the Waterfront and Waurn Ponds Campus.
- Sustainable transport considerations within Deakin's Design Standards.
- Car share and carpooling services.

Pathway

- Implement the Transport Strategies at each campus, focusing on the following key areas:
 - improving campus access
 - shifting single occupant driving toward enhanced public transport, ridesharing and active transport alternatives
 - supporting enriching, easy and engaging on-campus experience • reducing emissions and other negative sustainability impacts
 - enhancing local precincts.
- Continue to implement electric vehicle charging infrastructure on-campus.

Energy and Emissions



As a major cause of climate change, there has never been a more important time to focus on energy and reducing Deakin's operational emissions. We have set ambitious energy and emissions commitments which combined with a strong research focus, demonstrate leadership in transitioning away from fossil fuels and mitigating climate change.

2020

Reduce total carbon emissions to the 2013 baseline despite growth and increase the percentage of on campus renewable energy generation.

2025

Mitigate all Scope 1 and Scope 2 carbon emissions.

Contributing to the Sustainable Development Goals



Existing initiatives and planning

- Energy and Emissions Framework, Deakin's strategy to avoid emissions, reduce energy consumption, replace non-renewable sources and offset unavoidable emissions.
- The 7.25 MW Renewable Energy Microgrid at the Waurin Ponds Campus, designed and built in partnership with AusNet Services and Mondo Power.
- 14 GWh of renewable electricity procured through the Melbourne Renewable Energy Project 2 (MREP2) buying group, over the next 10 years.
- 100% of all travel related emissions are offset each year.
- All carbon offsets are aligned to the SDGs, and 20% are sourced from Australian projects.
- Hycel Technology Hub at the Warrnambool Campus, a regional cluster of expertise for researching, testing, optimising and scaling technologies that use hydrogen.

Pathway

- From 2020 to 2025, implement the Built Environment Program, targeting 10,000 tonnes of emission reduction via renewable energy, energy efficiency and optimisation.
- Switch the remainder of the University's grid supplied electricity to renewable sources prior to 2025.
- Develop and implement a range of low emission technologies and initiatives.
- Develop a comprehensive strategy to determine a pathway to full decarbonisation.

Waste



Fundamental to a sustainable campus, our approach to waste management focuses on eliminating waste at its source, achieving the highest value outcome for all waste items, driving lasting behaviour change and supporting the circular economy.

2020

Reduce the volume of waste to landfill to 20 kg per person.

2025

Further reduce waste to landfill per person to 10 kg.

2030

Towards zero waste to landfill by applying waste avoidance and circular economy principles.

Contributing to the Sustainable Development Goals



Existing initiatives and planning

- Waste audit data and Waste Management Plan.
- Implementation of new best practice waste signage across each campus.
- Organics collections in priority locations including hospitality venues and staff kitchens.
- Accurate and reliable waste measurement and data collection practices.
- Circular economy partnership to recycle Deakin's soft plastic for reuse insustainable asphalt products on-campus.

Pathway

- Develop a Waste Management Strategy outlining Deakin's roadmap towards zero waste.
- Continue to create and expand circular economy initiatives and partnerships.
- Review laboratory waste streams and implement actions to divert waste from landfill.
- Implement commercially compostable food packaging within hospitality venues to eliminate single-use plastics and enhance organic waste management.
- Implement waste separation initiatives in alignment with the Victorian Container Deposit Scheme.

Water



Managing and protecting water is integral to our sustainability approach. By applying integrated water management principles, we will address critical water-related climate change challenges.

2020

Reduce mains water consumption to 5 kilolitres or less per person.

2025

Water management strategies developed and all high priority actions complete..

2030

Deakin's impact on the water cycle has been holistically managed using Integrated Water Management principles.

Contributing to the Sustainable Development Goals

A vertical photograph on the left side of the page shows a park area with lush green trees and a body of water in the foreground. A grey line with circular endpoints connects the text 'Existing initiatives and planning' to the SDG icons above.

Existing initiatives and planning

- Waurn Ponds Campus Integrated Water Management (IWM) Plan.
- The Climate Ready Campus vision for the Waurn Ponds Campus.
- Biodiversity Management Plans and Climate Adaptation Plan.
- Deakin's involvement in the regional IWM forums, established by the Department of Environment, Land, Water and Planning.

Pathway

- Implementation of the Waurn Ponds IWM, including:
 - securing an alternate water supply
 - enhancing stormwater, sewerage and drainage infrastructure
 - improving water efficiency data and systems
 - protecting, enhancing and restoring waterways
 - prioritising the social and economic values of water.
- Development of water management strategies for the Burwood, Waterfront and Warrnambool Campuses.
- Embed Water Sensitive Urban Design (WSUD) design principles within Deakin's Design Standards and campus masterplanning.

Built Environment



Deakin is committed to planning, designing and operating the built environment to best practice sustainability standards. By embedding sustainability within Deakin's Campus Infrastructure and Property Strategy and Design Standards, we deliver infrastructure with positive environmental, economic and social outcomes for the university and community.

2020

Embed the Deakin Sustainable Built Environment (SBE) principles and complete a climate adaptation review.

2025

All high priority climate change adaptation actions completed.

2030

Every new Deakin building will offset its own sustainability impacts.

Contributing to the Sustainable Development Goals



Existing initiatives and planning

- Sustainable design principles are embedded within Deakin's Design Standards, and are applied to all new capital projects, major refurbishments or maintenance upgrades.
- Sustainability requirements are embedded in briefing and business case templates and processes.
- Climate Adaptation Plan completed for all campuses, including identification of climate ready goals, risks and recommended high priority actions.

Pathway

- Implement high priority climate change adaptation actions across Deakin's campuses.
- Continue to embed and refine sustainability considerations within Deakin's Design Standards.
- Embed and prioritise key sustainability principles within campus master planning.
- Prioritise and apply Net Zero Carbon design principles within Deakin's infrastructure.

Natural Environment



We are privileged to be the custodians of 450 hectares across four campuses and recognise our responsibility to manage and care for this land. Our approach to the natural campus environments includes a strong focus on adapting to climate change, increasing resilience and enhancing biodiversity value.

2020

Complete a biodiversity management plan and embed biodiversity considerations into campus planning.

2025

Enhance the biodiversity of the campus' natural landscapes and waterways.

2030

Biodiversity corridors have been established in priority locations allowing wildlife to thrive on campus.

Contributing to the Sustainable Development Goals



Existing initiatives and planning

- The Climate Ready Campus vision for the Waurin Ponds Campus.
- Biodiversity Assessments (Waurin Ponds, Burwood, Warrnambool).
- Biodiversity Management Plans (Waurin Ponds, Burwood).
- Urban Tree Strategy and Arbor Plan mapping.
- Waurin Ponds Campus IWM Plan, which incorporates significant natural environment elements.
- Deakin Climate Adaptation Plan.
- Campus Landscape Environmental Design Standards.

Pathway

- Develop an overarching strategy relating to biodiversity and the natural environment to connect existing plans, assessments and initiatives across the University.
- Establish specific biodiversity zones within campus masterplanning.
- Revegetate biodiversity corridors, linkages, and waterways.
- Develop interpretive signage and an Indigenous cultural walk at the Waurin Ponds Campus.
- Embed and prioritise key sustainability principles within campus masterplanning.



For more information:

Contact the sustainability team:

sustainability@deakin.edu.au