

# 2026 DEAKIN ACCELERATE

VCE EXTENSION  
STUDIES PROGRAM





# ACCELERATE YOUR JOURNEY TO UNI

Deakin Accelerate is a distinctive extension study program designed to challenge high-achieving students with university-level learning opportunities.

Get a head start on your degree, boost your ATAR and save money on tuition fees by completing two first-year university units, studying on campus or online, alongside your Year 12 studies.

With 19 exciting study areas across a range of disciplines to choose from, there's several opportunities to familiarise yourself with the university experience before you've even finished high school.



**#1 VICTORIAN  
UNIVERSITY  
FOR GRADUATE  
EMPLOYMENT<sup>1</sup>**

<sup>1</sup> Graduate Outcomes Survey 2023, Quality Indicators for Learning and Teaching (QILT), based on overall employment for domestic undergraduates, 4–6 months after course completion, equal overall employment rate with Monash University



## CONTENTS

- 2 Accelerate your journey to uni
- 4 Get ahead with Deakin Accelerate
- 6 How the program supports your studies
- 7 Deakin Accelerate study areas
- 16 Your guide to the application process
- 18 Glossary of terms
- 19 About Deakin

# GET AHEAD WITH DEAKIN ACCELERATE

Want to get the same benefits as studying a fifth or sixth VCE subject, gain university credit and reduce the cost of your future degree at Deakin?

Deakin Accelerate gives you a unique glimpse into life at Deakin while boosting your ATAR by completing an extra subject in Year 12. You'll experience uni life, new learning styles, subject variety and a dynamic environment created especially for this program.

## BOOST YOUR ATAR

Increase your ATAR and your future career prospects with Deakin Accelerate. Complete two first-year university subjects during Year 12 to gain between three and five increment points to your ATAR aggregate. That means more course options and a greater chance of getting into your ultimate course.

Here's the ATAR increment contribution you can gain based on your results:

Average mark across both Accelerate units	ATAR aggregate contribution	Equivalent VCE study score
90–100%	5.0 points	50
80–89.5%	4.5 points	45
70–79.5%	4.0 points	40
60–69.5%	3.5 points	35
50–59.5%	3.0 points	30

## CHOOSE HOW AND WHEN YOU WANT TO STUDY

When you join Deakin Accelerate, you can choose to study on campus, online or a combination of both.

Study at one of Deakin's vibrant four campuses in Melbourne Burwood, Geelong Waterfront, Geelong Waurin Ponds or Warrnambool. Or, if you're a rural student or just prefer learning online, you can take advantage of our flexible premium online learning platform and fit your learning around your VCE timetable and lifestyle.

At some universities, your online experience is an afterthought. At Deakin, digital is in our DNA, with 40 years of experience in distance and online learning. Join our connected, dynamic community of over 60,000 online students and discover why we're Victoria's #1 university for educational experience.<sup>1</sup>

When you study online at Deakin, our premium platform brings the classroom to you using innovative technology, backed by Australia's top-rated tech support.<sup>2</sup>

Access resources from your desktop, tablet or mobile device. When, where and how you study is up to you!

1 2022 Student Experience Survey, Quality Indicators for Learning and Teaching (QILT).

2 According to the Voice Project IT Service Quality Support Benchmark Survey.

## HOW IS MY ATAR CALCULATED?

Your ATAR is calculated from an aggregate, produced by adding together:

- your highest scaled study score in one of the English studies (English, English Language, English as an Additional Language (EAL), Literature),
- your next best scaled study scores for three permissible studies, and
- 10% of your scaled scores for your fifth and sixth permissible studies – one of these will be your Deakin Accelerate subject (however the good news is that your average mark is not scaled).

You'll then be ranked, alongside other students, in order of your aggregate and will be given a percentage rank, which will then be converted to an ATAR score.

# GET AHEAD WITH DEAKIN ACCELERATE



'The Deakin Accelerate program was a great opportunity to test out university before completely dedicating to a course, there were many transferable skills that led me to being ahead with my degree.'

**Alice Taylor**

Past Deakin Accelerate student – Criminology  
Current Deakin student – Bachelor of Laws/Bachelor of International Studies

## EARN UNI CREDIT FOR FREE

With Deakin Accelerate, you can fast-track your degree, gaining credit for completing two first-year university subjects during Year 12. Your credit can be used towards a related Deakin course – that's two units ticked off your degree before you even start university. Even if your Deakin course is unrelated to your Accelerate units, in many cases you'll still be able to put the credit you've earned towards electives. Plus, there are no tuition fees for Deakin Accelerate units – we pay them for you.

## EASE INTO UNI LIFE

Immerse yourself in the university experience and set yourself up for success in your first year with Deakin Accelerate. By the time you start uni, you'll already be familiar with essential tasks like using the library, referencing, navigating unit guides and selecting classes, ensuring a smooth transition from high school to university.

We also offer a free peer mentor program that matches new students with a peer mentor to help them navigate Deakin University resources. A peer mentor is an experienced student in your faculty who will support your transition into life as a Deakin student.

## STAND OUT FROM THE CROWD

Give your resume a distinctive edge and stand out to future employers as a high-achieving student with the Deakin Accelerate program. You'll show future employers your eagerness to learn, as well as your commitment to a program that demands advanced time-management skills, discipline and maturity.

# HOW THE PROGRAM SUPPORTS YOUR STUDIES

## FITTING IN WITH YOUR VCE

You'll study two first-year university units in the Deakin Accelerate Program, one in Trimester 1 (March to June) and the other in Trimester 2 (July to October). Your VCE studies will have started before you begin Accelerate, so you'll be settled in and ready to incorporate the program into your study schedule.

If you choose to study and experience uni life on campus, you'll attend classes and seminars during the day. There are various times to choose from, meaning you can pick one that best fits your VCE timetable.

Or if studying online is more accessible for you, you can also complete the program online. All class content is recorded and made available for all students to access throughout the trimester.

We recommend you spend up to 10 hours per week on your Accelerate unit. This includes time spent:

- preparing for class, including readings or activities
- attending weekly seminars
- completing assessments
- studying for exams.

As you can see from the image below, when it comes to university exam periods, you'll find these usually don't overlap with your VCE exams, so you'll have plenty of time to study for both.

## GETTING THE MOST OUT OF YOUR EXPERIENCE

With a dedicated team to guide you through the program, you'll be supported to perform at your best in both your VCE and Accelerate studies. Throughout the program, a number of helpful tools and resources are provided for Accelerate students, along with dedicated forums to interact with other Accelerate students.

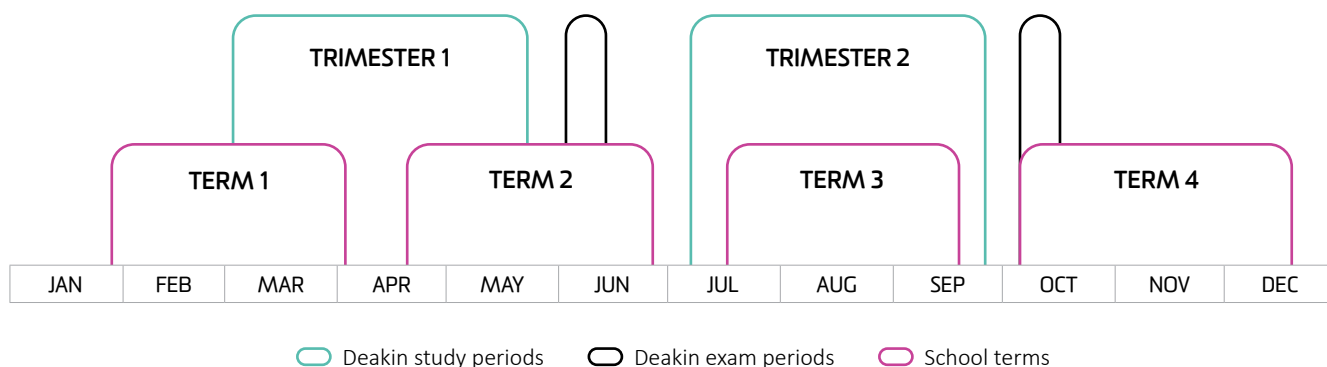
You'll have access to Deakin's many study support services to help you get the most out of your learning experience. Our study support team, made up of staff and students, are available in person and online, to help you understand your assessments and provide feedback on planning, writing and revising. They can also offer strategies to help you further develop your writing and study skills.

You'll also have access to our library, both on campus and online, offering you essential resources to improve your digital literacy or one-on-one guidance from a research expert.

## SUPPORTING YOUR HEALTH

Deakin offers a range of services to help students stay healthy and safe – physically, mentally and spiritually. We have Medical Centres which offer accessible and confidential services for all students. We also offer free confidential psychological support with our counsellors who are all highly-skilled psychologists and social workers. As well as this, Deakin's Disability Resource Centre provides essential services for students with a disability, health or mental condition that affects their study or participation in university life.

## DEAKIN TRIMESTERS VS SCHOOL TERMS





# ▶ DEAKIN ACCELERATE STUDY AREAS

We offer 19 exciting study areas across a range of disciplines, giving you the opportunity to diversify and ramp up your final year of VCE.

Please visit [deakin.edu.au/accelerate](https://deakin.edu.au/accelerate) for detailed information about Deakin Accelerate units, plus campus and essential course information.

Information is correct at the time of publishing but is subject to change. Please visit our website for the most up-to-date information.

## WHAT ARE CO-REQUISITES AND PREREQUISITES?

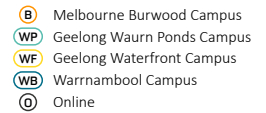
### ▶ PREREQUISITE

The VCE units that must be successfully completed in Year 11 to be eligible to participate in the Deakin Accelerate program and gain an ATAR increment.

### ▶ CO-REQUISITE

The VCE units that must be successfully completed in Year 11 or be enrolled to complete in Year 12, to be eligible to participate in the Deakin Accelerate program and gain an ATAR increment.

# STUDY AREAS



## ARTS AND COMMUNICATION

### CRIMINOLOGY

There are no prerequisite subjects.

#### Overview

Investigate the motives, causes and consequences of crime – and learn how to combat it. Our criminology courses help you understand criminal behaviour and find ways to minimise or prevent it. A great choice if you are interested in pursuing a Criminology, Law or Arts degree following Year 12.

Units	Campus	Assessment overview
Trimester 1 ACR101 – Introducing Crime and Criminology	B WP WF O	Assessment 1: Online assessment (10%) Assessment 2: Quiz (20%) Assessment 3: Research and writing assessment (30%) Assessment 4: Essay (40%)
Trimester 2 ACR102 – Introducing Crime and Criminal Justice	B WP WF O	Assessment 1: Presentation (10%) Assessment 2: Report (20%) Assessment 3: Research and writing assessment (30%) Assessment 4: Essay (40%)

### JOURNALISM

#### Prerequisite

Units 3 and 4 VCE Media – to be completed in Year 11.

#### Overview

Ready to produce stories that truly make an impact? Study journalism at Deakin and graduate with practical experience, strong industry connections and a standout portfolio that will impress future employers. Only suitable if you have completed VCE Units 3 and 4 Media in Year 11, this is a great choice if you are interested in pursuing Journalism via a Communication or Arts degree following Year 12.

Units	Campus	Assessment overview
Trimester 1 ALJ111 – Introduction to Journalism	B WP O	Assessment 1: Research assessment (20%) Assessment 2: News story (40%) Assessment 3: News story (40%)
Trimester 2 ALJ112 – News Reporting	B WP O	Assessment 1: News story (30%) Assessment 2: Photojournalism news story (30%) Assessment 3: Video news story (40%)

### PUBLIC RELATIONS

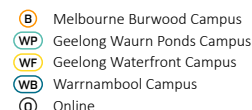
There are no prerequisite subjects.

#### Overview

Master reputation management and learn to inspire trust with Deakin's public relations units. Learn from industry-leading practitioners and develop the valuable hands-on experience you need to excel in your career. This is a great choice if you are interested in pursuing a degree and career in Communication and Public Relations following Year 12.

Units	Campus	Assessment overview
Trimester 1 ALR103 – Introduction to Public Relations	B WP O	Assessment 1: Research and writing assessment (30%) Assessment 2: Planning project (50%) Assessment 3: Online exercises (20%)
Trimester 2 ALR104 – Strategic Communication and Writing	B WP O	Assessment 1: Quiz (20%) Assessment 2: Group project (40%) Assessment 3: Portfolio (40%)

# STUDY AREAS



## BUSINESS AND LAW

### ACCOUNTING

#### Prerequisite/co-requisite

Units 3 and 4 VCE Accounting – to be completed in Year 11 or be enrolled to complete in Year 12.

#### Overview

In this study area you will learn to apply the fundamental concepts of accounting, while building on introductory accounting knowledge to give you a detailed understanding of financial reporting concepts. Suitable if you are studying Accounting in VCE, and are interested in pursuing a Commerce or Business degree following Year 12.

Units	Campus	Assessment overview
Trimester 1 MAA103 – Accounting for Decision Making	<b>B</b> <b>WF</b> <b>O</b>	Assessment 1: Case study (15%) Assessment 2: Case study (10%) Assessment 3: Group assessment and written reflection (15%) Assessment 4: Examination (60%)
Trimester 2 MAA261 – Financial Accounting	<b>B</b> <b>O</b>	Assessment 1: Case study (15%) Assessment 2: Case study (15%) Assessment 3: Group assessment and written reflection (20%) Assessment 4: Examination (50%)

### LAW

#### Prerequisite

Units 3 and 4 VCE Legal Studies – to be completed in Year 11.

#### Overview

In this study area you will gain the legal knowledge and skills to form the foundation of your legal education, including skills in communication, legal analysis and problem-solving, legal research and legal referencing. Suitable if you are studying Legal Studies in VCE and have an interest in a Law degree following Year 12.

Units	Campus	Assessment overview
Trimester 1 MLL110 – Legal Research and Statutory Interpretation	<b>B</b> <b>WF</b> <b>O</b>	Assessment 1: Quiz (20%) Assessment 2: Case study (30%) Assessment 3: Statutory Interpretation assessment (50%)
Trimester 2 MLL113 – Resolving Disputes and Legal Communication	<b>B</b> <b>WF</b> <b>O</b>	Assessment 1: Group assessment and written reflection (40%) Assessment 2: Written assignment and reflection (60%)



# STUDY AREAS

- B Melbourne Burwood Campus
- WF Geelong Wairn Ponds Campus
- WF Geelong Waterfront Campus
- WB Warrnambool Campus
- O Online

## BUSINESS AND LAW CONTINUED

### MANAGEMENT AND LAW

#### Prerequisite/co-requisite

Units 3 and 4 VCE Business Management and Units 3 and 4 VCE Legal Studies – to be completed in Year 11 or be enrolled to complete in Year 12.

#### Overview

In this study area you will have the opportunity to combine your interest in management and law, by completing a unit from each study area. With 25 different related course options, this is a great choice for students studying and enjoying both Business Management and Legal Studies in VCE.

Units	Campus	Assessment overview
<b>Trimester 1</b> MMM132 – Management	<span style="border: 1px solid black; border-radius: 50%; padding: 2px;">B</span> <span style="border: 1px solid black; border-radius: 50%; padding: 2px;">WF</span> <span style="border: 1px solid black; border-radius: 50%; padding: 2px;">O</span>	<b>Assessment 1:</b> Business report (40%) <b>Assessment 2:</b> Group presentation (20%) <b>Assessment 3:</b> End of unit assessment (40%)
<b>Trimester 2</b> MLL110 – Legal Research and Statutory Interpretation	<span style="border: 1px solid black; border-radius: 50%; padding: 2px;">B</span> <span style="border: 1px solid black; border-radius: 50%; padding: 2px;">WF</span> <span style="border: 1px solid black; border-radius: 50%; padding: 2px;">O</span>	<b>Assessment 1:</b> Quiz (20%) <b>Assessment 2:</b> Case study (30%) <b>Assessment 3:</b> Statutory Interpretation assessment (50%)

### MANAGEMENT AND MARKETING

#### Prerequisite/co-requisite

Units 3 and 4 VCE Business Management – to be completed in Year 11 or be enrolled to complete in Year 12.

#### Overview

In this study area you will have the opportunity to combine your interest in management and marketing, by completing a unit from each study area. Suitable if you are studying Business Management in VCE and are keen to gain an insight into the creativity involved in the marketing process.

Units	Campus	Assessment overview
<b>Trimester 1</b> MMM132 – Management	<span style="border: 1px solid black; border-radius: 50%; padding: 2px;">B</span> <span style="border: 1px solid black; border-radius: 50%; padding: 2px;">WF</span> <span style="border: 1px solid black; border-radius: 50%; padding: 2px;">O</span>	<b>Assessment 1:</b> Business report (40%) <b>Assessment 2:</b> Group presentation (20%) <b>Assessment 3:</b> End of unit assessment (40%)
<b>Trimester 2</b> MMK101 – Marketing Fundamentals	<span style="border: 1px solid black; border-radius: 50%; padding: 2px;">B</span> <span style="border: 1px solid black; border-radius: 50%; padding: 2px;">O</span>	<b>Assessment 1:</b> Research report (20%) <b>Assessment 2:</b> Problem-based report (40%) <b>Assessment 3:</b> End of unit assessment (40%)

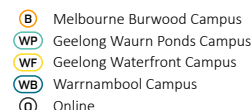


'Deakin Accelerate made the transition from high school to uni easier, allowing me to get ahead of my peers by already knowing how to reference and handle assignments in my first year of uni.'

#### Ari Lovell

Past Deakin Accelerate student  
 Current Deakin student – Bachelor of International Studies (Global Scholar)

# STUDY AREAS



## HEALTH AND SPORT

### DISABILITY, DIVERSITY AND INCLUSION

There are no prerequisite subjects.

#### Overview

In this study area, you'll explore how communication works across spoken, written and non-verbal forms, with a focus on disability and diversity. You'll also examine how people with disability interact with society and learn how to apply inclusive approaches across real-world settings. A great choice if you are interested in a health degree, while also providing an invaluable understanding of inclusion, relevant to any future career.

Units	Campus	Assessment overview
<b>Trimester 1</b> HDS101 – Communication and Diversity	B WP WB O	Assessment 1: Online multiple choice quiz (20%) Assessment 2: Reflective essay (40%) Assessment 3: Communication profile (40%)
<b>Trimester 2</b> HDS106 – Diversity, Disability and Social Inclusion	B WB O	Assessment 1: Case study analysis (20%) Assessment 2: Written assessment and reflection (30%) Assessment 3: Multimedia presentation (50%)

### EXERCISE AND NUTRITION SCIENCE

There are no prerequisite subjects.

#### Overview

In this study area, you'll build foundational knowledge in nutrition, food and the musculoskeletal system—exploring how the body moves, what we eat, and how our choices are shaped by science, culture and environment. Suitable if you are interested in a degree in nutrition science, sport and other areas of health.

Units	Campus	Assessment overview
<b>Trimester 1</b> HSN101 – Foundations of Food, Nutrition and Health	B WP WB O	Assessment 1: Career activity and reflection (20%) Assessment 2: Written assignment (30%) Assessment 3: Case study (15%) Assessment 4: End of unit assessment (35%)
<b>Trimester 2</b> HSE102 – Functional Human Anatomy <sup>1</sup>	B WP WB	Assessment 1: 3 x Online tests (40%) Assessment 2: Practical examination (30%) Assessment 3: End of unit assessment (30%)

### FOOD AND NUTRITION

#### Prerequisite/co-requisite

Units 3 and 4 VCE Food Studies – to be completed in Year 11 or be enrolled to complete in Year 12.

#### Overview

In this study area, you'll explore how food, nutrition and health are connected through topics like food culture, production and dietary behaviours. You'll also gain insight into food preparation and manufacturing processes – ideal if you're studying VCE Food Studies and considering a degree in nutrition science or a career in the food industry.

Units	Campus	Assessment overview
<b>Trimester 1</b> HSN101 – Foundations of Food, Nutrition and Health	B WP WB O	Assessment 1: Career activity and reflection (20%) Assessment 2: Written assignment (30%) Assessment 3: Case study (15%) Assessment 4: End of unit assessment (35%)
<b>Trimester 2</b> HSN106 – Food Fundamentals <sup>1</sup>	B	Assessment 1: Laboratory assessment (15%) Assessment 2: Laboratory assessment (20%) Assessment 3: Laboratory assessment (25%) Assessment 4: Practical assessment (5%) Assessment 5: End of unit assessment (35%)

<sup>1</sup> Students must complete HSE010, a laboratory safety unit which will take approximately one hour to complete.

# STUDY AREAS

- B Melbourne Burwood Campus
- WP Geelong Waurm Ponds Campus
- WF Geelong Waterfront Campus
- WB Warrnambool Campus
- O Online

## HEALTH AND SPORT CONTINUED

### HEALTH PRACTICE AND RESEARCH

#### Prerequisite/co-requisite

Units 3 and 4 VCE Health and Human Development – to be completed in Year 11 or be enrolled to complete in Year 12.

#### Overview

In this study area you'll explore relevant health behaviour issues and their impact on an individual's health and wellbeing while developing the basic skills necessary to consume and provide health research information. Suitable if you are studying Health and Human Development in VCE and looking to pursue a degree in health, including health sciences, OT, psychology, social work or health promotion.

Units	Campus	Assessment overview
<b>Trimester 1</b> HBS108 – Health Information and Data	<span style="border: 1px solid black; border-radius: 50%; padding: 2px;">O</span>	Assessment 1: Written report (20%) Assessment 2: Annotated bibliography (35%) Assessment 3: Written report (45%)
<b>Trimester 2</b> HBS110 – Health Psychology (Behaviour Change)	<span style="border: 1px solid black; border-radius: 50%; padding: 2px;">B</span> <span style="border: 1px solid black; border-radius: 50%; padding: 2px;">WP</span> <span style="border: 1px solid black; border-radius: 50%; padding: 2px;">WB</span> <span style="border: 1px solid black; border-radius: 50%; padding: 2px;">O</span>	Assessment 1: Behaviour change journal (35%) Assessment 2: Behaviour change journal (35%) Assessment 3: End of unit assessment (30%)

### PHYSICAL EDUCATION AND SPORT SCIENCE

#### Prerequisite/co-requisite

Either Units 3 and 4 VCE Physical Education or VCE VET Sport and Recreation – to be completed in Year 11 or be enrolled to complete in Year 12.

#### Overview

In this study area you will focus on exploring the body systems relevant to human movement. Learn about the structure and function of the musculoskeletal system and how it relates to normal and abnormal human movement. Suitable for students who can attend classes on campus and are studying PE, VET Health or VET Sport and Recreation in VCE, looking to pursue a degree and career in Sports Science, Physical Education or Occupational Therapy.

Units	Campus	Assessment overview
<b>Trimester 1</b> EEH103 – Foundations of Sport and Exercise Pedagogy and Practice	<span style="border: 1px solid black; border-radius: 50%; padding: 2px;">B</span> <span style="border: 1px solid black; border-radius: 50%; padding: 2px;">WP</span>	Assessment 1: Mid-trimester online examination (20%) Assessment 2: Group presentation (40%) Assessment 3: End of unit assessment (40%)
<b>Trimester 2</b> HSE102 – Functional Human Anatomy <sup>1</sup>	<span style="border: 1px solid black; border-radius: 50%; padding: 2px;">B</span> <span style="border: 1px solid black; border-radius: 50%; padding: 2px;">WP</span> <span style="border: 1px solid black; border-radius: 50%; padding: 2px;">WB</span>	Assessment 1: Online tests (40%) Assessment 2: Practical examination (30%) Assessment 3: End of unit assessment (30%)

<sup>1</sup> Students must complete HSE010, a laboratory safety unit which will take approximately one hour to complete.



# STUDY AREAS

- B Melbourne Burwood Campus
- WP Geelong Waurin Ponds Campus
- WF Geelong Waterfront Campus
- WB Warrnambool Campus
- O Online

## HEALTH AND SPORT CONTINUED

### PSYCHOLOGICAL SCIENCE

#### Prerequisite

Units 3 and 4 VCE Psychology – to be completed in Year 11.

#### Overview

In this study area you'll explore the roots of human behaviour and examine how we develop, adapt and function as individuals in a social world. You'll learn about key psychological concepts, personality, mental health and the biological and environmental influences that shape us, providing a strong foundation for future study in psychology. Only suitable if you've completed VCE Units 3 and 4 Psychology in Year 11.

Units	Campus	Assessment overview
<b>Trimester 1</b> HPS111 – Introduction to Psychology: Human Behaviour	<span style="border: 1px solid black; border-radius: 50%; padding: 2px;">B</span> <span style="border: 1px solid black; border-radius: 50%; padding: 2px;">WP</span> <span style="border: 1px solid black; border-radius: 50%; padding: 2px;">WB</span> <span style="border: 1px solid black; border-radius: 50%; padding: 2px;">O</span>	Assessment 1: Data extraction assessment (25%) Assessment 2: Critical response task (35%) Assessment 3: End of unit assessment (40%)
<b>Trimester 2</b> HPS121 – Introduction to Psychology: Individual and Social Development	<span style="border: 1px solid black; border-radius: 50%; padding: 2px;">B</span> <span style="border: 1px solid black; border-radius: 50%; padding: 2px;">WP</span> <span style="border: 1px solid black; border-radius: 50%; padding: 2px;">WB</span> <span style="border: 1px solid black; border-radius: 50%; padding: 2px;">O</span>	Assessment 1: Lab report (35%) Assessment 2: Lab report (35%) Assessment 3: End of unit assessment (30%)

### SPORT MANAGEMENT

#### Prerequisite/co-requisite

Units 3 and 4 of VCE Business Management – to be completed in Year 11 or be enrolled to complete in Year 12.

#### Overview

In this study area you will examine the structure of the Australian sports system, reviewing trends that have shaped the sports sector, while exploring the social sciences and their application to sport studies. This is a great choice if you have a strong desire to pursue a degree in sports management, sport development or business following Year 12.

Units	Campus	Assessment overview
<b>Trimester 1</b> MMS100 – Sport Organisation	<span style="border: 1px solid black; border-radius: 50%; padding: 2px;">B</span> <span style="border: 1px solid black; border-radius: 50%; padding: 2px;">WP</span> <span style="border: 1px solid black; border-radius: 50%; padding: 2px;">WF</span> <span style="border: 1px solid black; border-radius: 50%; padding: 2px;">O</span>	Assessment 1: Seminar activities and discussions (15%) Assessment 2: Business report (35%) Assessment 3: Business report (50%)
<b>Trimester 2</b> MMS201 – Sport in Society	<span style="border: 1px solid black; border-radius: 50%; padding: 2px;">B</span> <span style="border: 1px solid black; border-radius: 50%; padding: 2px;">WP</span> <span style="border: 1px solid black; border-radius: 50%; padding: 2px;">O</span>	Assessment 1: Seminar activities and discussions (20%) Assessment 2: Essay (30%) Assessment 3: Written assessment and online presentation (50%)



# STUDY AREAS

- B Melbourne Burwood Campus
- WP Geelong Waurm Ponds Campus
- WF Geelong Waterfront Campus
- WB Warrnambool Campus
- O Online

## ENGINEERING AND CONSTRUCTION MANAGEMENT

### CONSTRUCTION MANAGEMENT

There are no prerequisite subjects.

#### Overview

In this study area, you will learn about the purpose and context of project management within the construction industry, while gaining hands-on experience with information management systems and methodologies. A great choice for students interested in a career and degree in construction management, architecture or real estate.

Units	Campus	Assessment overview
<b>Trimester 1</b> SRM181 – Project Management 1	WF <span style="border: 1px solid black; border-radius: 50%; padding: 2px;">O</span>	Assessment 1: Group presentation (30%) Assessment 2: Essay (50%) Assessment 3: Group report (20%)
<b>Trimester 2</b> SRM165 – Introduction to Building Information Modelling	WF <span style="border: 1px solid black; border-radius: 50%; padding: 2px;">O</span>	Assessment 1: Report (20%) Assessment 2: Model assessment (30%) Assessment 3: Group assessment and presentation (50%)

### ENGINEERING IN THE WORLD

There are no prerequisite subjects.

#### Overview

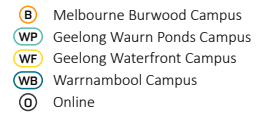
In this study area, you will explore the principles of human-centred design within sustainable systems, with emphasis on the design process, problem-solving and ideation through real-world applications. You will also gain hands-on experience with data creation, visualisation and Building Information Modelling (BIM) tools. A great choice if you are interested in a degree and career in engineering, construction and environment, robotics or infrastructure.

Units	Campus	Assessment overview
<b>Trimester 1</b> SEJ104 – Engineering in Society <sup>1</sup>	B WP <span style="border: 1px solid black; border-radius: 50%; padding: 2px;">O</span>	Assessment 1: Case study (25%) Assessment 2: Reflection (10%) Assessment 3: Visual poster presentation (30%) Assessment 4: Group project (35%)
<b>Trimester 2</b> SRM165 – Introduction to Building Information Modelling	WF <span style="border: 1px solid black; border-radius: 50%; padding: 2px;">O</span>	Assessment 1: Report (20%) Assessment 2: Model assessment (30%) Assessment 3: Group assessment and presentation (50%)

<sup>1</sup> STP010 is a compulsory zero credit point corequisite for SEJ104 - Engineering in Society. It is a career education online module that students must complete in weeks 0–6 and includes a short quiz.



# STUDY AREAS



## SCIENCE AND INFORMATION TECHNOLOGY

### FUTURE TECHNOLOGIES

There are no prerequisite subjects.

#### Overview

In this study area, you will explore sustainable design principles and the use of computer-aided design (CAD) to create environmentally responsible solutions. You will also learn about data capture technologies, including sensors in mobile devices and cyber-physical systems, and explore data collection, visualisation, and analysis methods to assess reliability and validity. A great choice if you are interested in a degree and career in engineering, sustainability or information technology.

Units	Campus	Assessment overview
<b>Trimester 1</b> SET111 – Sustainable Design	B WP O	<b>Assessment 1:</b> Design portfolio (70%) <b>Assessment 2:</b> CAD skills test (30%)
<b>Trimester 2</b> SIT112 – Introduction to Data Science and Artificial Intelligence	B O	<b>Assessment 1:</b> Portfolio (100%)

### ROBOTICS AND DATA SCIENCE

There are no prerequisite subjects.

#### Overview

In this study area, you will be introduced to robotics programming using Nao robots. You will learn about data capture protocols and methodologies, as well as data presentation and visualisation methods. A great choice if you are excelling in maths during VCE and interested in pursuing a degree in computer science, data science, IT, software engineering or design technologies.

Units	Campus	Assessment overview
<b>Trimester 1</b> SIT122 – Robotics Studio <sup>1</sup>	B O	<b>Assessment 1:</b> Portfolio (100%)
<b>Trimester 2</b> SIT112 – Introduction to Data Science and Artificial Intelligence	B O	<b>Assessment 1:</b> Portfolio (100%)

### SCIENCE

There are no prerequisite subjects.

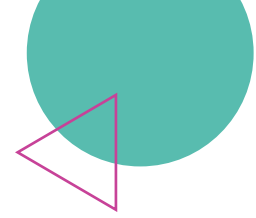
#### Overview

In this study area, you will focus on developing essential skills such as data analysis, scientific writing, research methods, and mathematics. You'll also be introduced to key physics concepts – such as mechanics, energy and electricity – and explore how they apply to biology and biomedical science. A great choice if you are interested in a degree and career in research, planning, management, pharmaceuticals or biomedical science.

Units	Campus	Assessment overview
<b>Trimester 1</b> SLE115 – Essential Skills in Science	O	<b>Assessment 1:</b> Online quiz (8%) <b>Assessment 2:</b> Written essay plan (18%) <b>Assessment 3:</b> Online multiple choice test (18%) <b>Assessment 4:</b> Group presentation (18%) <b>Assessment 5:</b> Careers report (20%) <b>Assessment 6:</b> End of unit assessment (18%)
<b>Trimester 2</b> SLE123 – Physics for the Life Sciences	O	<b>Assessment 1:</b> 10 x Online quizzes (40%) <b>Assessment 2:</b> Group presentation video (35%) <b>Assessment 3:</b> End of unit assessment (25%)

<sup>1</sup> Learning experiences and assessment activities in this unit require that students have access to specific computing equipment such as mBot ranger robot (to the approximate value of \$250). Campus-based students will have access to the robots during practical sessions. Cloud (online) students can pick up a robot from the Burwood Campus and borrow for the Trimester. If students are unable to collect from Burwood, arrangements are to be made to purchase your own.

# YOUR GUIDE TO THE APPLICATION PROCESS



## WHO SHOULD APPLY?

Apply to the Deakin Accelerate program if you're:

- a high-achiever with above-average Year 11 results
- looking for an extra challenge in VCE
- a self-starter who can work independently
- keen to make a head-start on your university degree.

## WHAT DO I NEED TO APPLY?

To be eligible for the program you must:

- be completing Year 12 in 2026
- meet the prerequisite or co-requisite VCE subject requirement
- achieve an average of at least 65% across your Year 11 subjects.

## HOW WE ASSESS YOUR APPLICATION

Deakin is committed to providing opportunities to students from diverse backgrounds. Successful applicants will be selected based on academic performance, school recommendation and responses to the supporting statement questions.

## HOW DO I APPLY?

### STEP 1

#### Research

- Which study areas are you interested in?
- What are the units about and will you enjoy them?
- Are there any prerequisite or co-requisite subjects you need to complete or have already completed?
- Will you complete the units on campus, online or a mix of both?

### STEP 2

#### Apply

Applications close on 28 November 2025. All applications must be submitted online via the application portal.

- Download the application pack at [deakin.edu.au/accelerate](https://deakin.edu.au/accelerate).
- Gain approval and supporting documentation from your parent or guardian, your school and your principal.
- Get a copy of your VASS 'Full Details Report'.
- Complete your responses to the student supporting statement questions.
- Submit your application and supporting documents at [deakin.edu.au/accelerate](https://deakin.edu.au/accelerate) by 28 November 2025.

### STEP 3

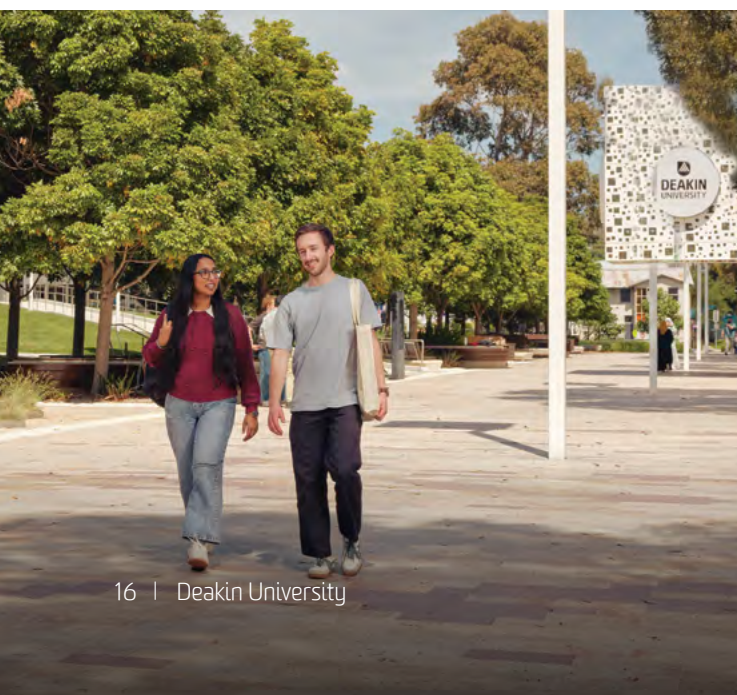
#### Receive your offer

- You'll be notified in early January 2026 about the outcome of your application
- Once you've received an offer, you'll have one week to formally accept it and confirm your place in the program.

### STEP 4

#### Start Deakin Accelerate

- Come along to Orientation, which will be held online in February 2026.
- Trimester 1 begins on 2 March 2026.



**APPLICATIONS CLOSE  
FRIDAY 28 NOVEMBER 2025**

Download your application pack:  
[deakin.edu.au/accelerate](https://deakin.edu.au/accelerate)



# GLOSSARY OF TERMS

## ACADEMICS

Teaching staff of the University. They will teach you the unit curriculum.

## CLASS

A class is a presentation given by an academic to a large group of students on the subject area being studied. Classes are held in big lecture theatres with upwards of a few hundred students.

## CONTACT HOURS

The weekly timetabled classes, seminars, workshops or practicals for each unit. This does not include the time you'll need to prepare for class, such as completing readings and activities or time spent completing assessments and studying for exams.

## CO-REQUISITE

The VCE units that must be successfully completed in Year 11 or be enrolled to complete in Year 12, to be eligible to participate in the Deakin Accelerate program and gain an ATAR increment.

## CREDIT

Credit granted towards your Deakin course for Accelerate study area units completed satisfactorily.

## FACULTIES

Organisational divisions at the University. Deakin has four faculties: the Faculty of Arts and Education, the Faculty of Business and Law, the Faculty of Health and the Faculty of Science, Engineering and Built Environment. Within each faculty are several schools; for example, Deakin Law School is within the Faculty of Business and Law.

## ONLINE STUDY

Deakin's premium online learning platform. Both on-campus and online students will participate in scheduled and flexible online learning experiences, including classes, seminars and discussion forums.

## PREREQUISITE

The VCE units that must be successfully completed in Year 11 to be eligible to participate in the Deakin Accelerate program and gain an ATAR increment.

## SEMINAR

An interactive meeting for smaller groups of students to discuss study materials and ideas with a member of the teaching team. Formerly referred to as a 'tutorial', seminars are usually held on campus and give you a chance to work closely with other students and teaching academics.

## STUDY AREAS

The pair of Deakin Accelerate units in one area available for a student to complete as part of the program. There are 19 study areas available in the 2026 Deakin Accelerate program, each consisting of two units.

## TRIMESTER

A trimester is the method of organising the teaching year. At Deakin there are three trimesters per year for most undergraduate courses. If you're enrolled in Deakin Accelerate, you'll study one unit in Trimester 1 (March to June) and the other in Trimester 2 (July to October).

## UNITS

A unit is an individual subject, typically studied over 11 weeks, with assessments throughout and at the end of the unit. Through the Accelerate program, you will study two units.

*Note: These terms are defined in relation to this publication only.*





# ABOUT DEAKIN



Through the Deakin Accelerate Program, you'll get a feel for what it's like to study at a university ranked in the top 1% of universities worldwide<sup>1</sup>, which gives you real-world skills, practical experience and networks to launch your dream career.

We have facilities and services available so that students feel happy, safe and supported as they build friendships, make connections and start their university adventure, which is why our students have also rated us as the #1 university in Victoria for course satisfaction.<sup>2</sup>

At Deakin, you'll experience:

- progressive real-world learning from practicing industry leaders
- practical, hands-on experiences in exceptional facilities
- flexible study options that fit into your busy life
- support services available to you whenever and however you need it
- industry partnerships to grow your professional network
- lifelong access to an award-winning university careers service.<sup>3</sup>

<sup>1</sup> 2023 ARWU Rankings, 2024 QS World University Rankings.

<sup>2</sup> Australian Graduate Survey 2010–2015, Graduate Outcomes Survey 2016–2022, Quality Indicators for Learning and Teaching (QILT).

<sup>3</sup> Australian Graduate Recruitment Industry Awards, 2017, 2018, 2019, 2020 winner for most popular career service in Australia; Employability award, 2021 Australian Financial Review Higher Education Awards.





# DEAKIN ACCELERATE WEBINAR

## WEBINAR

Wednesday 22 October, 2025  
6pm–7pm

Find out more  
[deakin.edu.au/accelerate](https://deakin.edu.au/accelerate)



1800 693 888  
[accelerate@deakin.edu.au](mailto:accelerate@deakin.edu.au)

Published by Deakin University June 2025. Information is correct at time of printing but is subject to change. Please see [deakin.edu.au/accelerate](https://deakin.edu.au/accelerate) for the most up-to-date information.

Deakin University CRICOS Provider Code: 00113B

DE  
AK  
IN