

2027 Undergraduate

Health and community services



DEAKIN
UNIVERSITY



Environmental health
Health promotion
Health sciences
Medical imaging

Occupational therapy
Optometry
Public health
Social work



Acknowledgement of Country

Deakin University acknowledges the Traditional Custodians of all the unceded lands, skies and waterways on which Deakin students, staff and communities come together. As we learn and teach through virtually and physically constructed places across time, we pay our deep respect to the Ancestors and Elders of Wadawurrung Country, Eastern Maar Country and Wurundjeri Country, where our physical campuses are located. We also acknowledge the many First Nations from where students join us online and make vital contributions to our learning communities.

Artwork: *Learning Together, Growing Together* by Nathan Patterson.

Your future in health and community services

Gain real-world experience

Our health courses give you the opportunity to complete at least 120 hours of supervised industry experience, supported by Deakin. Placements are coordinated through Deakin's Health WIL team, with major health services, not-for-profits and local councils providing hands-on experience that can lead to ongoing employment. You'll graduate with practical skills, confidence and professional networks across the health sector.

Learn from industry leaders

Courses are shaped by experts from top health organisations, including VicHealth, Cancer Council Victoria, Lifesaving Victoria, Victorian Department of Health, Parks Victoria, Sustainability Victoria and Refuge Victoria. You'll gain current industry knowledge, understand best-practice approaches, and build connections that enhance your career prospects.

Broaden your perspective

Rural and regional placements complement metropolitan experience, helping you understand diverse community health needs. You can also explore international health systems and practices through study abroad programs, global partnerships, collaborations and internships. These experiences expand your professional networks, expose you to different cultural approaches to health, and give you a competitive edge in a globalised workforce.

Work in multidisciplinary teams

Our multidisciplinary approach means that students in one area, such as occupational therapy, learn alongside peers from medicine, nursing, social work and dietetics. Working in these collaborative teams helps you understand the expertise and roles of different health professionals, preparing you for team-based care in real-world settings and giving you skills highly valued by employers.

Launch your career in a growing sector

The health care and social assistance industry is Australia's largest and fastest-growing employment sector, with over half a million new jobs projected by 2035.¹ Ranked #36 in the world for public health² and the #1 Victorian university for graduate employment³, Deakin ensures you enter the workforce with confidence.



Your future in health and community services

Our research is improving health and wellbeing

Research at Deakin is making a difference across the health spectrum in areas like:

- ageing and chronic illness
- disability and inclusion
- health and sustainability
- infant and child health
- medicine
- nutrition
- physical activity
- social and mental health.

Our research feeds directly into the development of our undergraduate and postgraduate courses, which means that you'll graduate with knowledge from the cutting edge of science. Here's a snapshot of what our research currently focuses on:

- **Deakin Institute for Physical Activity and Nutrition** is a world-leading research institute committed to improving health and quality of life and preventing chronic disease. The Institute focuses on reducing the rates of chronic disease through nutrition and physical activity research excellence while fostering the next generation of research stars.
- **Deakin Institute for Health Transformation** works to address today's most compelling and complex health challenges through excellence in collaborative research that transforms how we design and deliver prevention and care. It aims to activate healthy populations and communities, innovate health service delivery and design, empower consumers as advocates for health system change, and drive equity and value in health and care.
- **Deakin Institute for Mental and Physical Health and Clinical Translation** develops new and effective responses to mental and physical health for the community. Its researchers use innovative approaches to translate medical research from the laboratory to real-world solutions.

For more research stories, visit deakin.edu.au/research.

Access state-of-the-art health facilities

Deakin students benefit from industry-standard facilities across our campuses. The medical precinct at Geelong Waurm Ponds is located within walking distance from Epworth HealthCare's private, which provides a supportive space for supervised clinical placements. Students gain hands-on experience in purpose-built teaching spaces. For example, optometry students use cutting-edge labs at Geelong Waurm Ponds, while medical imaging students learn x-ray techniques and complex imaging procedures in dedicated labs.

The multi-million-dollar Warrnambool Health Precinct now offers upgraded clinical simulation and viewing facilities, specialist learning spaces, and shared health discipline environments. These integrated spaces allow you to collaborate with students from other courses, preparing you for multidisciplinary teamwork in your future career.

Indigenous Access Scheme

The Indigenous Access Scheme is a pathway to undergraduate study that recognises the achievements of Aboriginal and Torres Strait Islander students. By looking beyond your ATAR and academic results to consider all the skills, experience and community work that make you unique and prepare you for study, we can reward your hard work with a place at university. A large range of health courses are available through the Indigenous Access Scheme, such as health sciences, medical imaging, occupational therapy, optometry, public health and health promotion, and social work.

For further information about the Indigenous Access Scheme, visit deakin.edu.au/ias.

Optometry students can practice real-world scenarios in our fully equipped optometry facilities and state-of-the-art clinical skills laboratory.



Careers in health and community services

Over half a million new roles expected in healthcare and social assistance by 2035.¹

The healthcare and social assistance sector in Australia is booming and offers a wide range of career opportunities where you can make significant impacts across a range of fields. Whether you're drawn to direct health services, public health education, or advocating for social justice, this sector provides a platform to develop your skills and pursue your passion.

Nutrition

As a nutritionist, you'll delve into the profound effects of diet on health, addressing societal issues such as obesity, misinformation, and disease prevention. You'll also provide tailored dietary advice and develop nutrition programs for individuals and communities, enhancing their well-being both socially and physiologically.

Occupational therapy

Occupational therapists make a tangible difference in people's lives by utilising specialised knowledge to enhance health and well-being, modify environments, and assist individuals in engaging in meaningful activities. They work across various settings, including hospitals, schools, and private practices, helping clients overcome physical and cognitive challenges.

Optometry

Optometrists play a critical role in healthcare by diagnosing and managing a variety of eye conditions, contributing to the overall health and well-being of their patients. After qualifying, you can practice across Australia and New Zealand, providing essential eye care services in communities.



Public health

Public health professionals work on the front lines of health improvement, examining societal and environmental determinants of health and managing campaigns that can save thousands of lives. They also engage in research and policy-making to ensure sustained public health improvements.

Social work

In social work, you will address deep-rooted social issues and support vulnerable groups by providing counselling, advocacy, and intervention services. Social workers are essential in promoting social change and development across a variety of sectors, including education, healthcare, and community organisations.

Food studies

In food studies, professionals explore the science of food safety, quality management, and nutritional values, directly impacting public health and safety. Your career could span roles in food production, quality assurance, and policy development, making substantial contributions to the food industry and health services.

Health promotion

Health promotion specialists strategise and implement programs that mitigate health risks and promote wellness, often collaborating with community groups to tailor interventions. This career involves not only planning but also evaluating the effectiveness of health initiatives and education campaigns.

Medical imaging

Specialists in medical imaging use sophisticated technology to capture detailed internal images that diagnose and treat various conditions, as well as guide medical decisions. Careers in this field extend to hospital settings, private clinics, and research institutions, where your skills can contribute to advanced patient care and medical research.

The Deakin Guaranteed ATAR

We are providing lower guaranteed ATARs for eligible Australian Year 12 students for most undergraduate courses. This will provide you with more certainty, reduce stress and ultimately give you greater opportunity to get into the course you really want.

To be eligible for the program, you will need to meet at least one of the following criteria, preference Deakin and remain opted-in for the 'personal information and location' category in VTAC equity schemes (SEAS):

- attend a Deakin under-represented school
- live or study in a regional or remote location, or
- be of Indigenous Australian descent.

deakin.edu.au/deakin-guaranteed-atar

Courses

LN Low number – fewer than five offers made to recent secondary education applicants

X123 Deakin course code
 🕒 Course duration in years
 📅 Trimester intake

📍 Melbourne Burwood Campus
 📍 Geelong Waurin Ponds Campus
 📍 Geelong Waterfront Campus
 📍 Warrnambool Campus
 📍 Online

Bachelor of Health Sciences

H300 🕒 3 📅 T1, T2, T3

CAMPUS	📍	📍	📍	📍
ATAR	55.40	55.20	59.15	58.40
GUARANTEED ATAR ⁴	✓	✓	✓	✓

A rewarding career in health gives you the chance to reduce health disparities and help individuals and communities – in Australia and overseas – lead fuller, healthier and happier lives. As a Bachelor of Health Sciences graduate, you can be confident you will have a solid grounding in a range of health-related fields. It is projected that there will be over half a million new jobs in Health Care and Social Assistance in the next ten years.¹ You will graduate with the in-demand skills needed to join this booming sector.

Careers

This flexible degree allows you to combine study areas that you're passionate about, and benefit from workplace learning to become a specialist in the booming health sector.

Depending on your majors, your health sciences degree can prepare you for work in the following roles and fields:

- community engagement officer
- counsellor
- disability support planner
- environmental and sustainability officer
- exercise specialist
- family/community/refugee/Indigenous project officer
- food and nutrition policy developer
- food scientist
- health educator
- health policy developer
- health promotion officer
- health and sports marketer or PR officer
- international aid worker
- lifestyle and wellness professional
- nutrition and health promotion coordinator
- regional health service planner.

With ageing populations and public health issues such as obesity and chronic illness on the rise, and with governments around the world increasing emphasis on disease prevention as well as treatment, employability in the sector is strong and continually increasing.

You may choose to begin your studies with a Bachelor of Health Sciences to get a solid grounding in health sciences and explore your interest areas, then follow a pathway into psychology, nutrition, public health or disability and inclusion. This will allow you to pursue further career opportunities in specialist fields.

Work experience

Enhance your employment prospects and consolidate your knowledge and skills through an industry placement or volunteer unit. Depending on the majors and elective units you choose to study, this option may be available in your second or third year.

Course structure

This 24-credit-point course consists of six core units and at least two major sequences. Students must complete at least 18 credit points offered by the Faculty of Health, at least 14 credit points at level 2 or 3 and at least 6 credit points at level 3.

	TRIMESTER 1	TRIMESTER 2
YEAR 1	Understanding Health Major sequence 1 Major sequence 2 Elective/major 3/minor	Health Information and Data Major sequence 1 Major sequence 2 Elective/major 3/minor
YEAR 2	Australian Health Care System Major sequence 1 Major sequence 2 Elective/major sequence 3	Population Health: A Research Perspective Major sequence 1 Major sequence 2 Elective/major 3/minor
YEAR 3	Program Planning, Management and Evaluation Major sequence 1 Major sequence 2 Elective/major 3/minor	Integrated Learning for Practice Major sequence 1 Major sequence 2 Elective/major 3/minor

▶ Ready to find out more? deakin.edu.au/course/H300⁵



Courses

LN Low number – fewer than five offers made to recent secondary education applicants

X123 Deakin course code
🕒 Course duration in years
📅 Trimester intake

📍 Melbourne Burwood Campus
📍 Geelong Waurn Ponds Campus
📍 Geelong Waterfront Campus
📍 Warrnambool Campus
📍 Online



'I chose to study within the field of health as I enjoy learning about how we can enhance the quality of life for others and improve health systems to address prevention. This course has the benefit of lots of flexibility and choice in terms of what you can study.'

Dani Sharpe
Bachelor of Health Sciences graduate

Bachelor of Health Sciences continued

Majors

Disability and inclusion 📍 📍

Understand the importance of social inclusion, and apply your disability knowledge in a variety of occupations. Learn to support people with disabilities in living the life of their choice by removing barriers to inclusion that exist in services and the community.

Environmental health 📍 📍

If you're interested in working in public health policy, environmental health or related areas, this major is a great choice; it focuses on healthy environments and healthy people.

Exercise science 📍 📍 📍

Understand the core sciences underpinning competitive sport and recreational physical activity. A variety of learning approaches is adopted so that you can integrate your sporting interests with your studies.

Family, society and health 📍 📍

Explore the issues facing households and families, such as the link between healthy human development and healthy households, economic wellbeing and health, and the need for supportive environments.

Food studies 📍

Understand everything about food, from the science of food composition to community issues such as genetically modified foods and food law. You can pursue a career in settings including the food industry, health services, business and mass media.

Health promotion 📍 📍 📍

Develop a sound knowledge of the causes of health and illness and effective strategies for prevention of the latter, as well as practical skills in health education and communication, health planning and health management.



Medical biotechnology 📍 📍

Medical biotechnology uses cells and cell materials to produce pharmaceutical and diagnostic products that help treat and prevent human diseases. This major gives you an understanding of the core sciences underpinning biotechnology for medical advancement.

Nutrition 📍 📍 📍 📍

Gain knowledge of the biological basis of human nutrition and the relationship between diet, health and disease. You'll be introduced to the science and physiology underpinning human nutrition and explore the role that good nutrition plays in human health and the prevention of disease. You will acquire skills needed to support the nutritional wellbeing of individuals and communities.

Physical activity and health 📍 📍 📍 📍

Understand how behaviour influences health, focusing on the relationship between physical activity and health across the lifespan. Explore the roles physical activity and sedentary behaviour play in the prevention of chronic disease.

Psychological science 📍 📍 📍 📍

This major prepares you for further training towards becoming a registered psychologist. To practise as a psychologist, you must complete an undergraduate degree with a major in psychology followed by a fourth year of study in psychology, which is accredited by the Australian Psychology Accreditation Council (APAC), before continuing on to postgraduate study in psychology.

apac **accredited.**

Psychology for allied health 📍 📍 📍 📍

This major prepares you to work in allied health areas such as community work, coaching and counselling individuals and groups, as well as health and human services consulting.

Public health 📍 📍 📍



A major in public health allows you to develop strategies and techniques to help solve global health challenges, prevent diseases and promote conditions that optimise population health.

Sustainability and planetary health 📍 📍

Learn how human activity influences both planetary and human health. You'll examine climate change, environmental systems and the Sustainable Development Goals (SDGs), a global framework for improving sustainability and wellbeing. You'll develop practical skills in analysing environmental impacts, supporting climate adaptation and mitigation and applying nature-based approaches to health promotion.

Courses

IES Indigenous Entry Stream
RRES Regional and Remote Entry Scheme
LN Low number – fewer than five offers made to recent secondary education applicants
NA Not applicable

X123 Deakin course code
 Course duration in years
 Semester intake

B Melbourne Burwood Campus
WP Geelong Waurin Ponds Campus
WF Geelong Waterfront Campus
WB Warrnambool Campus
Ⓞ Online

Bachelor of Medical Imaging

  4  S1 **RRES** **IES**

CAMPUS	WP
ATAR	95.45
GUARANTEED ATAR ⁴	NA
RRES	95.50

Join one of the strongest growth areas within the health sector⁶ with Deakin's Bachelor of Medical Imaging. Gain the latest knowledge in medical radiation science and develop your skills in techniques like general radiography, computed tomography (CT), digital vascular imaging and magnetic resonance imaging (MRI). You will learn in our world-class medical imaging labs, which have the capabilities of real medical imaging clinics.

Regional and Remote Entry Scheme (RRES)

Workforce shortages in medical imaging exist in regional and remote areas of Australia. Deakin has addressed these shortages by introducing a Regional and Remote Entry Scheme to attract more regional and rural students into the course.

The Regional and Remote Entry Scheme has a separate VTAC code and eligible applicants may receive up to 10 bonus aggregate points towards their entry score for admission.

deakin.edu.au/rres

Indigenous Entry Stream

Deakin offers an Indigenous Entry Stream for the Bachelor of Medical Imaging, with Commonwealth Supported Places available to non-Year 12 Indigenous students.

For more information about minimum entry requirements and how to apply, visit deakin.edu.au/ies.

Professional recognition

This course is designed to meet the registration eligibility requirements of the Australian Health Practitioner Regulation Agency (AHPRA). Deakin's Bachelor of Medical Imaging has been awarded accreditation by AHPRA, with statutory direction provided by the Medical Radiation Practice Board of Australia (MRPBA).

Careers

Medical imaging professionals jobs in Australia are projected to grow strongly with 18.1% growth by 2030.⁶

Upon graduation, you'll be prepared to pursue a career as a diagnostic radiographer. You could find yourself working in a radiology department in a hospital, private radiology practice or health department. As a graduate, you'll be eligible to work as a skilled practitioner across the broad range of diagnostic medical imaging, including:

- general radiography
- computed tomography (CT)
- fluoroscopy.

You will be eligible to receive AHPRA registration as a Medical Radiation Practitioner, with a division/registration type of Diagnostic Radiographer, General. This AHPRA registration enables graduates to work as a diagnostic radiographer in a range of settings, such as:

- small regional clinics
- large metropolitan imaging departments
- hospitals and specialist medical facilities in Australia.

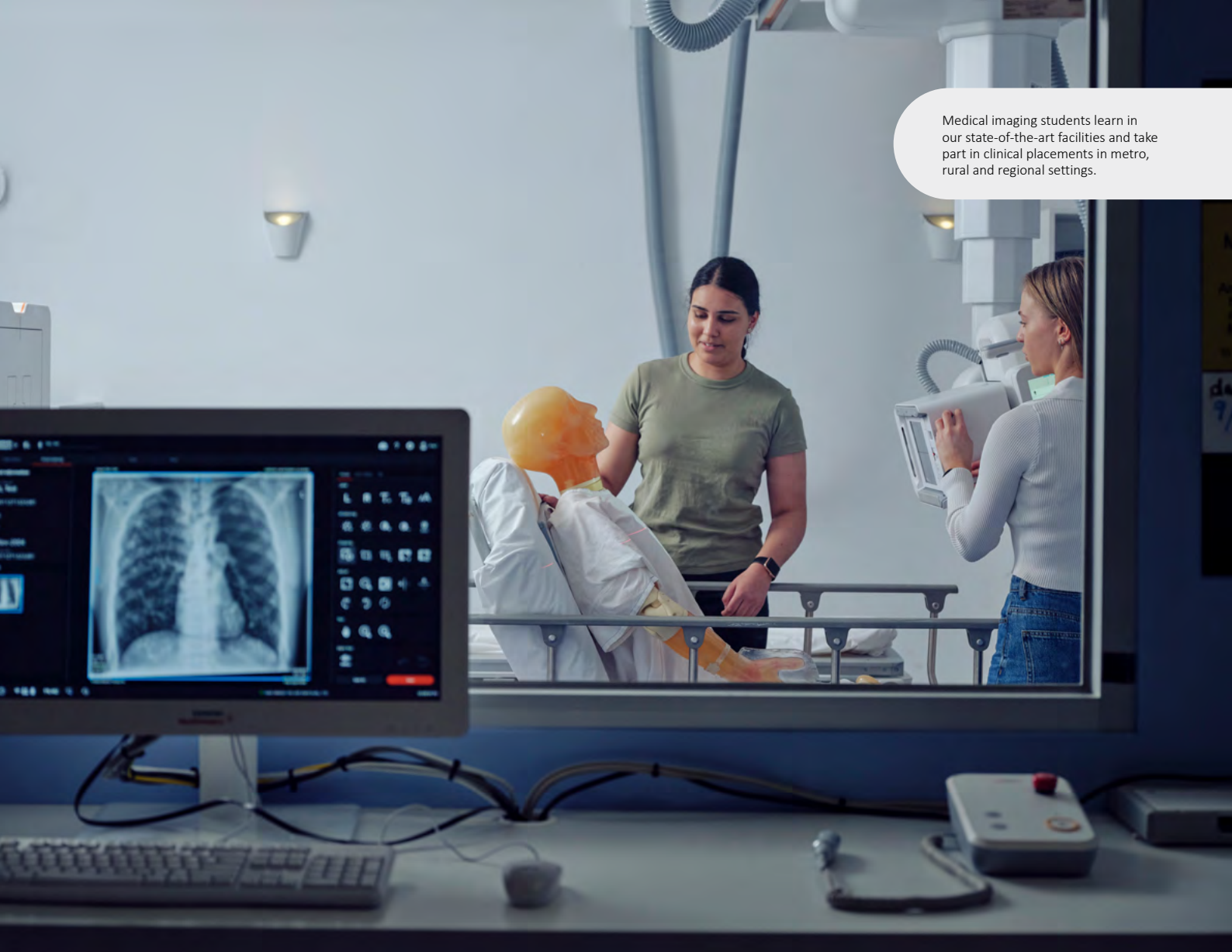


'I chose to study medical imaging as I want to make a positive difference to as many individuals as possible. Not only do you get to assist in the initial proceedings of one's diagnosis, but also to follow them throughout their treatment and aid in their recovery.'

Abbey Harman

Bachelor of Medical Imaging student

Medical imaging students learn in our state-of-the-art facilities and take part in clinical placements in metro, rural and regional settings.



Bachelor of Medical Imaging continued

Work experience

From your first year of study, you'll begin clinical placements. You will develop clinical skills under the supervision of experienced practitioners and work in a range of settings, including hospitals and private radiology clinics throughout Australia. You'll consolidate your skills in the state-of-the-art medical imaging training unit at the Geelong Waurn Ponds Campus.

Work placement requirements

Please refer to page 20.

Course structure

This 32-credit-point course is delivered over eight consecutive semesters and consists of core units, as well as a choice of one of two units in the final semester of the course.

	SEMESTER 1	SEMESTER 2
YEAR 1	Medical Radiation Science 1 Foundation Principles and Application of Medical Imaging 1 Medical Imaging Practice 1	Foundation Principles and Application of Medical Imaging 2 Medical Imaging Practice 2
YEAR 2	Medical Radiation Science 2 Foundation Principles and Application of Medical Imaging 3 Medical Imaging Practice 3	Foundation Principles and Application of Medical Imaging 4 Medical Imaging Practice 4
YEAR 3	Principles of Advanced Modality Imaging 1 Medical Imaging Practice 5	Principles of Advanced Modality Imaging 2 Medical Imaging Practice 6
YEAR 4	Research Methods and Critical Appraisal Medical Imaging Practice 7	Medical Imaging Practice 8 Advanced Modalities OR Practice Management

► Ready to find out more? deakin.edu.au/course/H309⁵

Courses

RRES Regional and Remote Entry Scheme
LN Low number – fewer than five offers made to recent secondary education applicants
NA Not applicable

X123 Deakin course code
🕒 Course duration in years
📅 Trimester intake

B Melbourne Burwood Campus
WP Geelong Waurrn Ponds Campus
WF Geelong Waterfront Campus
WB Warrnambool Campus
📺 Online

Bachelor of Occupational Therapy

H355 🕒 4 📅 T1 **RRES**

CAMPUS	WF	WB
ATAR	81.75	63.20
GUARANTEED ATAR⁴	NA	NA
RRES	82.45	78.35

Deakin’s accredited Bachelor of Occupational Therapy gives you a cutting-edge, practical education, combining hands-on learning in state-of-the-art facilities with guidance from expert teaching staff. You’ll gain the skills to identify environmental and social supports and barriers, assess people’s strengths and limitations, and develop personalised, evidence-based intervention plans for those affected by injury, illness, disability or environmental challenges. This focus on practical, high-quality teaching has made Deakin the #1 Victorian university⁷ for occupational therapy course satisfaction, so you can be sure you’ll graduate ready for professional practice.

Professional recognition

The Bachelor of Occupational Therapy is accredited by the Occupational Therapy Council of Australia Ltd (OTC) and the World Federation of Occupational Therapists, which means you’ll be able to practise professionally in Australia and overseas.

Regional and Remote Entry Scheme (RRES)

Deakin is addressing workplace shortages in occupational therapy in regional and remote areas of Australia by introducing an entry scheme to attract more regional and rural students into the occupational therapy course. The RRES has a separate VTAC code and eligible applicants may receive up to 10 bonus aggregate points towards their entry score for admission. deakin.edu.au/rres

Careers

Occupational therapy is one of Australia’s top 10 fastest-growing health and social assistance professions, with roles projected to grow 33.1% by 2035.¹

Through this course, you could find employment in areas such as:

- aged care
- community health organisations
- general, psychiatric or rehabilitation hospitals
- government departments or agencies
- in-patient and out-patient services
- mental health services
- primary and secondary schools
- private practices
- rehabilitation services
- research institutes
- workplace wellbeing and rehabilitation.

Our graduates have found employment with a range of organisations, including:

- Alfred Health, Barwon Health, Bellarine Community Health, Western District Health
- Department of Education and Training
- National Disability Insurance Agency (NDIA)
- primary and secondary schools
- private occupational therapy practices
- Transport Accident Commission (TAC).

Earn more with a Deakin occupational therapy degree

Deakin occupational therapy graduates are #1 in Victoria for median graduate salary⁸, reflecting the practical, industry-ready expertise gained through the course.



Courses

RRES Regional and Remote Entry Scheme
LN Low number – fewer than five offers made to recent secondary education applicants
NA Not applicable

X123 Deakin course code
 Course duration in years
 Trimester intake

B Melbourne Burwood Campus
WP Geelong Waurin Ponds Campus
WF Geelong Waterfront Campus
WB Warrnambool Campus
 Online



‘Deakin offers placements from first year, so you’re exposed to a wide variety of areas within the field of occupational therapy and provided with insight into the career early in the course.’

Shontel Lasker
 Bachelor of Occupational Therapy graduate

Bachelor of Occupational Therapy continued

Work experience

You undertake well over the minimum industry requirement of 1000 hours of practicum placements throughout the four years of this course, starting in year 1. Placements are conducted in a range of settings, including schools, hospitals, clinics, community health organisations and industry, in metropolitan, regional and rural locations.

Work placement requirements

Please refer to page 20.

Course structure

This 32-credit-point course consists of 31 credit points of core and one elective.

	TRIMESTER 1	TRIMESTER 2
YEAR 1	Understanding Health Introduction to Anatomy and Physiology Communication and Diversity Foundations of Occupational Science and Therapy A	Functional Human Anatomy Integrated Human Physiology Foundations of Occupational Science and Therapy B Introduction to Aboriginal Studies
YEAR 2	Impact of Health Conditions On Occupational Performance Occupations in Childhood Development Neurological Structure, Function and Plasticity Elective	Health Information and Data Occupation Across the Lifespan Occupational Performance Analysis Practice Education and Cultural Contexts
YEAR 3	Practice Education and Interprofessional Collaboration Evidence-Based Occupational Therapy Practice Enabling Occupational Participation Through Information Gathering Psychosocial Influences on Occupational Performance 1	Occupational Performance: Evaluation and Intervention 2 Professional Practice Education A Psychological Influences on Occupational Performance 2
YEAR 4 PASS STREAM	OT Practice Applying Knowledge and Reasoning Promoting Occupational Engagement Through Assistive Technology Professional Practice Education B	Transition to Practice Occupational Therapy Professional Development Innovation and Evaluation in OT Practice
YEAR 4 HONOURS STREAM	Promoting Occupational Engagement Through Assistive Technology Professional Practice Education B OT Honours Proposal Ethics and Literature	OT Honours Analysis and Critique Honours Research Project

▶ Ready to find out more? deakin.edu.au/course/H355⁵

Courses

LN Low number – fewer than five offers made to recent secondary education applicants

X123 Deakin course code
 🕒 Course duration in years
 📅 Trimester intake

📍 Melbourne Burwood Campus
 📍 Geelong Waurin Ponds Campus
 📍 Geelong Waterfront Campus
 📍 Warrnambool Campus
 📍 Online

Bachelor of Public Health and Health Promotion H313 🕒 3 📅 T1, T2

CAMPUS	📍	📍	📍
ATAR	65.95	LN	LN
GUARANTEED ATAR ⁴	✓	✓	✓

Make a difference with Deakin’s Bachelor of Public Health and Health Promotion – the only Victorian course accredited by the International Union for Health Promotion and Education (IUHPE). Gain expertise in addressing poor health through community engagement, policy, research, and media. Work Integrated Learning allows you to gain real-world experience across multiple units. Choose from both domestic and international opportunities for work placements and volunteering.

Ranked #36 worldwide

Public health at Deakin has been ranked #36 in the world by one of the world’s most prestigious international ranking systems.²

Professional recognition

Deakin’s Bachelor of Public Health and Health Promotion is fully accredited by the International Union for Health Promotion and Education (IUHPE). As a health promotion graduate, this accreditation enables you to register with the IUHPE as a registered Health Promotion Practitioner, securing you global recognition.

Graduates may also be eligible to become members of the Public Health Association of Australia (PHAA) and obtain professional accreditation as a Health Promotion Practitioner with the Australian Health Promotion Association (AHPA).

Careers

Job growth in the health sector continues to increase as public health issues – such as obesity, heart disease, diabetes, sedentary lifestyles and ageing populations – affect healthcare systems globally. With many other public health issues becoming more prevalent, you can mould your career around those that match your interests in the health field. Throughout your degree, we frequently discuss different case studies to help spark ideas for your unique career pathway.



Career opportunities in government and private sector roles across Australia and internationally include:

- community development coordinator
- health policy developer
- health promotion officer
- health researcher
- program development coordinator
- program evaluator
- social planning officer
- women’s health officer.

You may find employment in a range of health areas, including:

- healthy eating
- mental health
- physical activity and environmental health
- social inclusion
- tackling chronic illness (such as asthma, arthritis and heart disease), plus developing and implementing prevention strategies
- women’s health.

Work experience

Gain extensive practical experience throughout your course, by completing at least 200 work-integrated learning (WIL) hours, 120 of which will be undertaken in your final year and will entail work experience in a health-related agency. These placements help you to consolidate your skills under the supervision of qualified practitioners, so you can be work-ready when you graduate.

Work placement requirements

Please refer to page 20.

‘I love that the course is so diverse ... I have undertaken field visits to different health organisations and I have participated in self-run experiments to investigate health behaviours and habits. I loved my placement as I got to experience what it is like to work in the field and have one-on-one mentoring by professionals, and I’ve since gained employment from this.’

Clare Bjorksten

Bachelor of Public Health and Health Promotion graduate





Bachelor of Public Health and Health Promotion continued

Course structure

This 24-credit-point course consists of 16 core units and eight elective units chosen from any faculty.

	TRIMESTER 1	TRIMESTER 2
YEAR 1	Understanding Health Disease Prevention and Control Local and Global Environments for Health Elective	Health Information and Data Health Protection Social Perspectives on Population Health Elective
YEAR 2	Epidemiology and Biostatistics 1 Health Communication Health Promotion in Action Elective	Professional Practice Epidemiology and Biostatistics 2 Population Health: A Research Perspective Elective
YEAR 3	Politics, Policy and Health Implementation and Evaluation Program Planning, Management and Evaluation Elective	Contemporary Health Issues Health Practicum 2 electives

▶ Ready to find out more? deakin.edu.au/course/H313⁵

Award-winning university career service⁹

DeakinTALENT will prepare you to secure the jobs of tomorrow. Our award-winning service is available to you from day one and will support you for the rest of your career. You'll have lifetime access to career coaching, industry networking opportunities and a comprehensive suite of digital resources designed to help you become the most employable version of yourself.

deakintalent.deakin.edu.au

Courses

RRES Regional and Remote Entry Scheme
LN Low number – fewer than five offers made to recent secondary education applicants
NA Not applicable

X123 Deakin course code
 Course duration in years
 Trimester intake

B Melbourne Burwood Campus
WP Geelong Waurin Ponds Campus
WF Geelong Waterfront Campus
WB Warrnambool Campus
Ⓞ Online

Bachelor of Social Work

H330 4 T1 **RRES** **NIK**

CAMPUS	WF	WB	Ⓞ
ATAR	60.10	LN	60.10
GUARANTEED ATAR⁴	NA	NA	NA
RRES	62.75	NA	NA

Do you have a passion for human rights and a strong sense of social justice? Deakin’s fully accredited Bachelor of Social Work will equip you with skills to enhance the wellbeing of others and address social equity and socioeconomic factors. Social work is one of Australia’s fastest-growing health and social assistance professions, with roles projected to grow 25.3% by 2035.¹ Graduate career-ready, with the expertise to work effectively with individuals, families and communities to address the root causes of inequality.

Professional recognition

This course is accredited with the Australian Association of Social Workers (AASW). Students completing the course are eligible to apply for membership of AASW and can practise professionally throughout Australia.

Careers

Social work is part of a growing human services field, with graduates working across local, state and federal government departments, in private and non-government human services organisations, and in various advocacy, policy making and tribunal capacities.

After completing this course, you’ll be a sought-after graduate ready to pursue a rewarding career in social work.

You may work in many general and specialist areas of social work, such as:

- activism
- advocacy
- assisting groups such as the aged, women, youth or multicultural populations
- community development
- consultancy
- counselling
- drug and alcohol counselling
- education
- facilitation
- family therapy
- health.

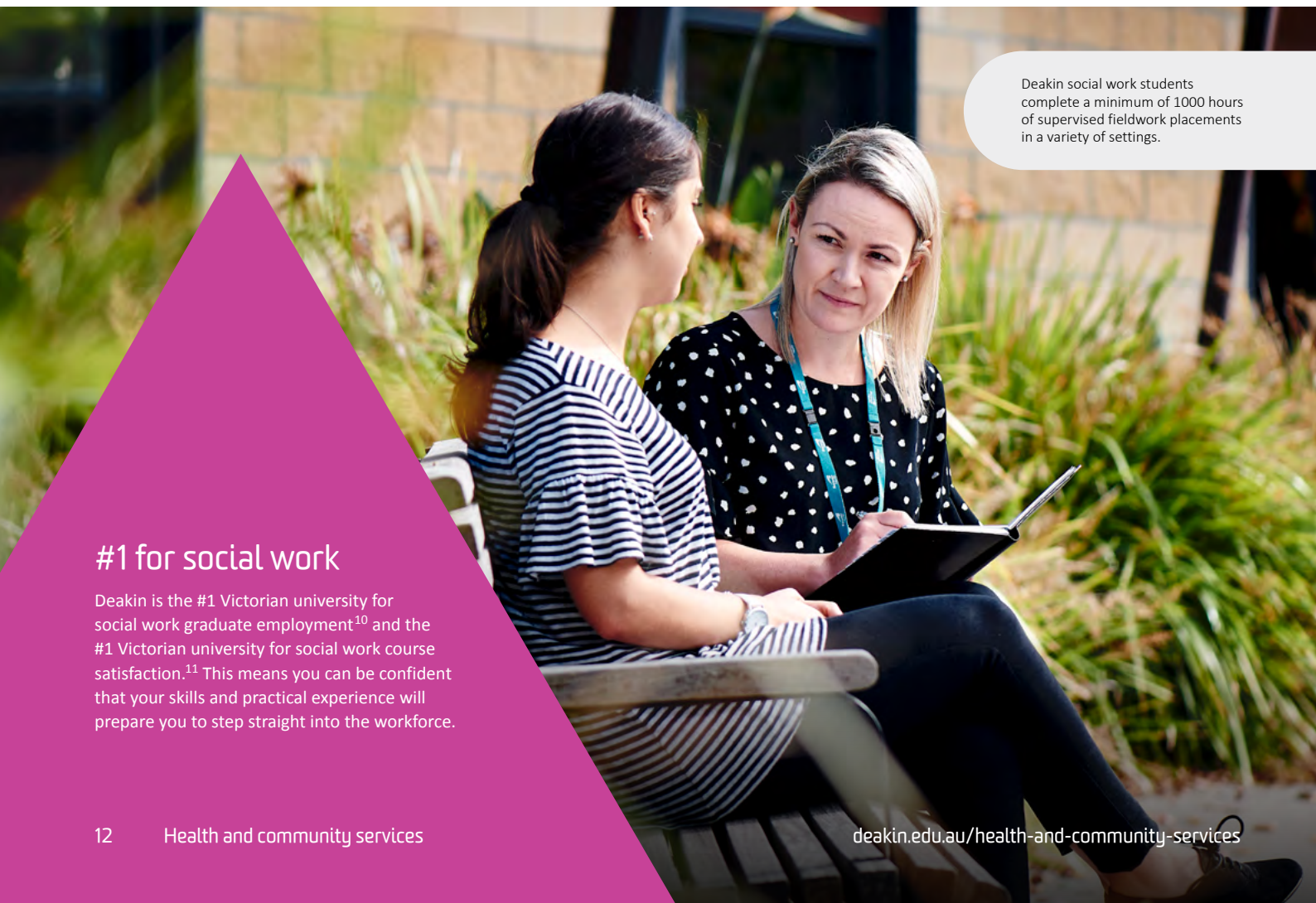
- housing
- policy development and research
- program management and coordination
- refugee assistance and tribunal capacities.

Examples of specific roles you may pursue include:

- careers counsellor
- case manager
- child and family counsellor
- child protection officer
- community development access officer
- community development and education officer
- disability support coordinator
- diversity officer
- drug and alcohol case manager
- family relationship adviser
- mental health coordinator
- school counsellor
- youth projects officer.

NIKERI Institute

This course is also available at the National Indigenous Knowledges, Education, Research and Innovation (NIKERI) Institute. Find out more at deakin.edu.au/nikeri.



Deakin social work students complete a minimum of 1000 hours of supervised fieldwork placements in a variety of settings.

#1 for social work

Deakin is the #1 Victorian university for social work graduate employment¹⁰ and the #1 Victorian university for social work course satisfaction.¹¹ This means you can be confident that your skills and practical experience will prepare you to step straight into the workforce.



Be rewarded for your hard work

A Deakin scholarship is more than just a financial boost. It is our chance to acknowledge your accomplishments and reward your hard work, setting you on the path to success at university. See the full range of scholarships available at deakin.edu.au/scholarships.

Bachelor of Social Work continued

Work experience

Field education placements let you experience learning under the supervision of qualified social work practitioners. During the course, you'll undertake a minimum of 1000 hours of fieldwork placements in a variety of communities and workplaces in metropolitan and regional settings.

If you are enrolled as an online student, you must attend a minimum of 20 days at the Geelong Waterfront Campus, engaging in intensives and workshops, to complete your degree. For a full-time student, this will generally mean five consecutive days per year. Eligible domestic social work students can receive financial support during placements through the Commonwealth Prac Payment (CPP), which provides approximately \$330 per week.¹²

Work placement requirements

Please refer to page 20.

Regional and Remote Entry Scheme (RRES)

Health workforce shortages exist in regional and remote areas of Australia. Deakin has addressed these shortages by introducing a Regional and Remote Entry Scheme to attract more regional and rural students into the course.

The Regional and Remote Entry Scheme has a separate VTAC code and eligible applicants may receive up to 10 bonus aggregate points towards their entry score for admission.

deakin.edu.au/rres

Course structure

This course consists of 32 credit points. Students in the 'Pass Stream' must complete 29 credit points of core units and three elective units; and students in the 'Honours Stream' must complete 31 core units and one elective unit.

TRIMESTER 1

YEAR 1

Introduction to Aboriginal Studies
Introduction to Sociology: the Sociological Imagination
Understanding Health
Introduction to Social Work: Social Work Theory and Practice A

YEAR 2

Public Policy and Politics for Critical Social Workers
Community-Engaged Research Practice A
Community Development: Social Work Theory and Practice D
Elective

YEAR 3

Social Work Field Education A

YEAR 4

PASS STREAM

Critical Approaches to Social Work: Social Work Theory and Practice G
Elective
Working in Uncertainty: Social Work Theory and Practice H
Elective

YEAR 4

HONOURS STREAM (H430)

Working in Uncertainty: Social Work Theory and Practice H
Critical Approaches to Social Work: Social Work Theory and Practice G
Social Work Honours Research Project A

TRIMESTER 2

Introduction to Sociology: the Sociology of Everyday Life
Theories for Social Work Practice: Social Work Theory and Practice B
Social Work Methods in Context: Social Work Theory and Practice C
Health Psychology (Behaviour Change) OR
Introduction to Psychology: Human Behaviour

Human Rights and Social Justice: Values, Ethics and the Legal Context of Social Work
Practice Skills: Social Work Theory and Practice E
Self and Society
Placement Readiness: Preparing for Supervised Social Work Practice

Doing Critical Social Work: Social Work Theory and Practice F
Critical Social Policy
Applied Social Research in Ethical and Political Context
Administration and Policy Development: The Organisational Context

Social Work Field Education B

Social Work Field Education B Research Focused
Social Work Honours Research Project B

▶ Ready to find out more? deakin.edu.au/course/H330⁵

Courses

IES Indigenous Entry Stream
RRES Regional and Remote Entry Scheme
LN Low number – fewer than five offers made to recent secondary education applicants
NA Not applicable

X123 Deakin course code
 Course duration in years
 Semester intake

B Melbourne Burwood Campus
WP Geelong Warrn Ponds Campus
WF Geelong Waterfront Campus
WB Warrnambool Campus
O Online

Double degrees

Bachelor of Vision Science/ Master of Optometry

D302 3.5 T1 **RRES** **IES**

CAMPUS	
ATAR	90.35
GUARANTEED ATAR ⁴	NA
RRES	86.90

Graduate in just three and a half years with Australia's only accelerated Bachelor of Vision Science/Master of Optometry – and help meet the growing need for optometrists in regional and remote communities. You will gain the discipline-specific knowledge and skills you need to be work-ready and eligible to apply for registration as a practising optometrist in Australia and New Zealand.

Regional and Remote Entry Scheme (RRES)

Workforce shortages in optometry exist in regional and remote areas of Australia. Deakin has addressed these shortages by introducing a Regional and Remote Entry Scheme, to attract more regional and rural students into the optometry course.

The Regional and Remote Entry Scheme has a separate VTAC code and eligible applicants may receive up to 10 bonus aggregate points towards their entry score for admission.

deakin.edu.au/rres

Indigenous Entry Stream

Deakin offers an Indigenous Entry Stream for the Bachelor of Vision Science/Master of Optometry, with Commonwealth Supported Places available to non-Year 12 Indigenous students. For more information about minimum entry requirements and how to apply, visit deakin.edu.au/ies.

Professional recognition

On successful completion of this course, you can apply for registration to practise as an optometrist in Australia. Deakin optometry is accredited by the Optometry Board of Australia, following assessment by the Optometry Council of Australia and New Zealand (OCANZ). You'll also be eligible to apply for registration to Medicare as a service provider. This will enable you to pursue employment opportunities throughout Australia and New Zealand.

Careers

Deakin optometry graduates are well prepared for employment in a diverse range of work settings, including:

- clinics
- corporate and community settings
- health services
- hospitals
- non-government organisations
- private practice
- research institutes
- state and local governments
- tertiary education institutions.

Career opportunities for qualified optometrists include:

- practice ownership
- private and public eye care
- research and education
- recognised interest areas within optometry such as:
 - dry eye management
 - low vision
 - myopia control
 - paediatric vision.

Work placement requirements

Please refer to page 20.

Course structure

To complete the Bachelor of Vision Science/Master of Optometry you must attain 40 credit points. This is an accelerated three-and-a-half-year course delivered over 10 consecutive trimesters commencing in Trimester 1. All the units in the course are core and the course can only be completed in full-time mode.

	TRIMESTER 1	TRIMESTER 2	TRIMESTER 3
YEAR 1	Principles of Optics Cells and Genes Understanding Health Health Information and Data	Science of Vision 1 Clinical Optics Ocular Structure Chemistry for the Professional Sciences OR Chemistry in Our World	Science of Vision 2 Ocular Function Accounting for Decision Making The Business of Optometry
YEAR 2	Health and Vision Sciences 1 Principles and Practice of Optometry 1	Health and Vision Sciences 2 Principles and Practice of Optometry 2	Health and Vision Sciences 3 Principles and Practice of Optometry 3
YEAR 3	Advanced Optometric Studies 1	Advanced Optometric Studies 2	Community Optometry 1 (Clinical Residential Placement)
YEAR 4	Community Optometry 2 (Clinical Residential Placement)		

▶ Ready to find out more? deakin.edu.au/course/D302⁵

Double the skills, double the career opportunities

Deakin double degrees help you stand out, opening doors to a wider range of career paths. By combining two disciplines, you'll unlock unique opportunities and gain a competitive edge in today's dynamic job market.

deakin.edu.au/study/find-a-course/double-degrees

Work experience

Clinical placements are an integral part of this program. You will undertake a variety of short-term industry placements and spend the final six months of the course as a 'student resident' in a range of clinical optometric and medical settings. These extensive rotations take place in metropolitan and regional or rural settings – with a minimum of three months in a non-metropolitan setting – and will help you consolidate your knowledge and skills in supported environments, under the supervision of qualified optometrists.



'The double degree offers many different avenues and opportunities to study a range of subjects on offer at Deakin. For me, this course combines my love of journalism with my passion for health promotion and gives me the knowledge and experience to assist in whichever path I choose to take.'

Bethany Griffiths

Bachelor of Health Sciences/Bachelor of Arts graduate

Double degrees

Bachelor of Health Sciences/Bachelor of Arts

D391 4 T1, T2, T3

CAMPUS	B	WP	D
ATAR	61.25	63.20	LN
GUARANTEED ATAR⁴	✓	✓	✓

Build a degree tailored to your interests with a Bachelor of Health Sciences/Bachelor of Arts. This flexible and diverse degree will equip you with a unique skill set that will unlock wide-ranging career opportunities and give you a competitive edge in the job market. Choose from over 45 major options and develop specialist knowledge in your selected disciplines. Learn how to apply critical, creative and strategic thinking to solve real-world issues.

Course structure

This course consists of 32 credit points: 16 credit points from the Bachelor of Health Sciences units and 16 credit points from the Bachelor of Arts units. Students must also complete the Academic Integrity Module (0 credit points; compulsory).

Bachelor of Health Sciences majors

Within the 16 credit points from the Bachelor of Health Sciences, you'll study six core units and select from one major and one minor sequence of study. To view available majors and minors within the Bachelor of Health Sciences, see page 5 or visit deakin.edu.au/course/H300.⁵

Bachelor of Arts majors

The 16 credit points from the Bachelor of Arts comprises of one major sequence (8 credit points). The remaining 8 credit points can be used to undertake a Bachelor of Arts minor sequence, the Employability units or electives chosen from the Bachelor of Arts.

Majors	B	WP	D
Anthropology	✓	✓	✓
Arabic	✓	✓	✓
Chinese	✓	✓	✓
Criminology	✓	✓	✓
Digital cultures	✓	✓	✓
Education	✓	✓	✓
English – Children's literature	✓	✓	✓

Majors

	B	WP	D
English – Creative writing	✓	✓	✓
English – Literature	✓	✓	✓
Film and television studies	✓	✓	✓
Gender and sexuality studies	✓	✓	✓
History	✓	✓	✓
Indigenous studies			✓
Indonesian	✓	✓	✓
International relations	✓	✓	✓
Media and communication	✓	✓	✓
Media studies	✓	✓	✓
Performing arts	✓	✓	✓
Philosophy	✓	✓	✓
Politics and policy studies	✓	✓	✓
Public relations studies	✓	✓	✓
Religious studies	✓	✓	✓
Social media	✓	✓	✓
Sociology	✓	✓	✓
Spanish	✓	✓	✓
Sport journalism	✓	✓	✓
Strategic advertising	✓	✓	✓
Visual arts and photography	✓	✓	✓
Visual communication design	✓	✓	✓

deakin.edu.au/course/D391⁵



Want a deeper dive into your degree options?

We want you to feel confident and informed about your university choices. This guide is just the beginning – our online course pages offer in-depth information, from detailed course content to entry requirements and career outcomes. When online, you can also connect one-on-one with our course experts for personalised advice to help shape your study and career path.

Ready to take the next step? Visit deakin.edu.au/health-and-community-services and let's get started.

Courses

LN Low number – fewer than five offers made to recent secondary education applicants
 NA Not applicable
 NP ATAR not published. A range of criteria can apply

X123 Deakin course code
 🕒 Course duration in years
 📅 Trimester intake

📍 Melbourne Burwood Campus
 📍 Geelong Waurn Ponds Campus
 📍 Geelong Waterfront Campus
 📍 Warrnambool Campus
 📍 Online

Double degrees

Bachelor of Nursing/Bachelor of Public Health and Health Promotion D381 🕒 4 📅 T1

CAMPUS	B	WF
ATAR	80.50	LN
GUARANTEED ATAR ⁴	NA	NA

Graduate prepared for a successful career in the largest growing employment sector in Australia.¹ Develop the knowledge, skills and ethical understanding to become a registered nurse, balanced with the skills required to empower people to lead healthier lifestyles. Deakin's Bachelor of Nursing/Bachelor of Public Health and Health Promotion enables you to make a real difference in the health outcomes of individuals, communities and global populations.

Professional recognition

On successful completion of your course, you'll be eligible to apply for registration as a registered nurse with the Nursing and Midwifery Board of Australia (NMBA). You may also be eligible to become a member of the Public Health Association of Australia (PHAA) and the Australian Health Promotion Association (AHPA).

Careers

As a registered nurse with public health and health promotion knowledge, you can pursue career opportunities in a range of work settings, including:

- aged care
- clinics
- community health centres
- government agencies and private industry
- homes
- hospices
- hospitals
- schools
- universities.

The skills you'll develop in the growing fields of public health and health promotion will qualify you to work in diverse areas, including:

- health and human services
- health education
- health policy development and implementation
- public health communication.

Your knowledge of the social and environmental factors that affect the health of individuals and populations will prepare you for a career in a range of clinical and community settings, such as:

- health education
- patient support agencies
- public health
- rehabilitation
- schools
- voluntary organisations
- working abroad.

Work experience

From Trimester 1 of your first year of study, you will undertake professional experience placements. Here, you'll work in multidisciplinary healthcare teams, where you'll develop clinical skills under the supervision of registered nurses. A Public Health and Health Promotion Practicum unit offers an in-depth working understanding of public health and health promotion principles and approaches in the field.

Clinical placement requirements

Please refer to page 20.

Course structure

The Bachelor of Nursing/Bachelor of Public Health and Health Promotion consists of 32 credit points across four years of study. An honours year is available to eligible students upon completion of this degree.

deakin.edu.au/course/D381⁵

Bachelor of Public Health and Health Promotion/Bachelor of Commerce D379 🕒 4 📅 T1, T2

CAMPUS	B	WP	D
ATAR	81.65	NP	LN
GUARANTEED ATAR ⁴	✓	✓	✓

Deakin's Bachelor of Public Health and Health Promotion/Bachelor of Commerce combined course allows you to take your commercial knowledge into the fast-growing health sector, or your health expertise into the commercial world. Graduates can register with the International Union for Health Promotion and Education (IUHPE); Deakin is the only Victorian university to hold this accreditation. You will also gain a globally recognised commerce qualification and learn to solve real commercial challenges alongside industry leaders.

Careers

As a graduate of this course, you may find employment in either of these professional areas and work with groups such as children, adults, the disadvantaged and employees. Understanding both business and health is particularly important in executive management positions in the health industry – particularly those that carry policy development, budget and staff management responsibilities.

You may qualify to work in positions such as health promotion officer, community development officer, social planning officer, health educator, women's health officer, health policy developer, planning officer, health researcher, partnerships coordinator or program evaluator.

You will be prepared for a diverse range of employment areas, including but not limited to healthy eating, physical activity, mental health, social inclusion, chronic illness (such as asthma, arthritis, heart disease) and women's health.

Work experience

A Public Health and Health Promotion Practicum requires you to undertake a minimum of 120 hours of work experience in a health-related agency. In addition to developing a practical understanding of public health and health promotion, this experience will help you further develop the professional and personal skills required to work in a public health and health promotion role.

Work placement requirements

Please refer to page 20.

Course structure

This course consists of 32 credit points: three foundation health units, 13 core units in public health and health promotion, eight Bachelor of Commerce core units and a prescribed commerce major sequence.

deakin.edu.au/course/D379⁵



Pathway to postgraduate studies

Deakin's Faculty of Health will prepare you to explore the largest and fastest-growing employment industry in Australia; employment in the health care and social assistance sector projected to grow by over half a million jobs (23%) by 2035.¹ We inspire students to reach their potential, provide personal, dynamic learning experiences and conduct world-class research.

Your undergraduate degree will see you well placed to take advantage of this booming sector, with fantastic graduate employment opportunities across a range of roles. It also provides an excellent pathway to a wide range of postgraduate degrees at Deakin. Many of these degrees can be completed in a reduced duration depending on your professional experience and previous qualifications, which can save you time and money.

Dietetics

The Master of Dietetics prepares you to solve widespread health issues through science-based, diet-related treatments. Take a big step towards becoming an Accredited Practising Dietitian, and build advanced skills that allow you to improve the health and wellbeing of the individuals and communities you work with.

Course

- Master of Dietetics

deakin.edu.au/course/master-dietetics



#1 Victorian university for course satisfaction

Year on year, Deakin's students have the highest course satisfaction rate of all Victorian universities.¹³ We've ranked this highly for the past 14 years. Students are particularly happy with our:

- teaching
- learning resources
- student support
- skills development
- learner engagement.



Disability and inclusion

You'll form relevant, innovative and critical approaches to understanding disability and inclusion thanks to the up-to-date and practical material taught in our courses. One in five Australians have a disability, so you'll be ready to join a rapidly growing sector.

Courses

- Graduate Certificate of Disability and Inclusion
- Master of Disability and Inclusion

deakin.edu.au/disability-and-inclusion

Health economics

Form a strong theoretical foundation, plus develop analytical and quantitative skills, to understand the complexities of healthcare financing. You'll have the opportunity to get hands-on experience and gain valuable insider knowledge through our placement program. As a graduate, you'll be able to critically evaluate current research in economic policy and economic evaluation of health services, as well as participate effectively in health policy development and debate.

Courses

- Graduate Certificate of Health Economics
- Master of Health Economics

deakin.edu.au/health-economics

Health management

Graduate from a school ranked in the top 200 worldwide for public health. You'll learn to make evidence-based decisions that focus on improving the quality of health service delivery, a sector that has seen strong growth in recent years. Align your study options with your career aspirations and interest areas so you can excel in your chosen field.

Courses

- Graduate Certificate of Health Management
- Graduate Diploma of Health Management
- Master of Health Management

deakin.edu.au/health-management

Pathway to postgraduate studies

Health promotion

Develop your practical skills in health education, health communication, health planning and health management. Job growth in the health sector continues to increase as public health issues affect healthcare systems globally. Through personalised fieldwork, we'll help you to consolidate your skills under the supervision of qualified practitioners, so you can be work-ready after graduation.

Courses

- Graduate Certificate of Health Promotion
- Graduate Diploma of Health Promotion
- Master of Health Promotion

deakin.edu.au/health-promotion

Human nutrition

Tailor your study choices to focus on fields that you're interested in pursuing after graduation, such as nutrition in childhood, nutrition policy, nutrition in ageing and many more. Through your industry knowledge and hands-on experience, you'll gain an advanced understanding of the role of nutrition and diet in the health of individuals and the population. Graduate with the skills to evaluate the findings of human nutrition studies and be ready to undertake further research, if you wish.

Courses

- Graduate Certificate of Human Nutrition
- Graduate Diploma of Human Nutrition
- Master of Human Nutrition
- Master of Nutrition and Population Health

deakin.edu.au/human-nutrition

Occupational therapy

Occupational therapy helps people of all ages participate in everyday life and live with autonomy, dignity, and choice. Deakin's Master of Occupational Therapy Practice is designed for graduates with a bachelor's degree in another discipline and prepares you to enter the profession as a registered occupational therapist in just two years. Through a blend of online and hands-on learning, you'll develop practical skills, professional experience, and the confidence to work collaboratively with individuals, communities, and multidisciplinary teams. You'll learn to use person-centred, culturally safe, and evidence-informed approaches.

Course

- Master of Occupational Therapy Practice

deakin.edu.au/occupational-therapy

Public health

Depending on your course, you'll complete a range of work-integrated learning experiences. These opportunities give you the chance to transfer your knowledge and skills to a practical setting. Over the 120 hours of placement on offer, we'll frequently unpack different case studies to help spark ideas for your own unique career pathway. These placements help you consolidate your skills under the supervision of qualified practitioners, so you can be work-ready after graduation.

Courses

- Graduate Certificate of Epidemiology Intelligence
- Graduate Certificate of Public Health
- Graduate Diploma of Public Health
- Master of Public Health

deakin.edu.au/public-health

Social work

Our work-integrated learning allows you to put your skills into practice while under the supervision of qualified social work practitioners. These field education placements are conducted in a variety of communities and workplaces in metropolitan and regional settings, giving you the chance to work through a wide range of scenarios. You'll graduate ready to handle real-world situations with confidence.

Course

- Master of Social Work

deakin.edu.au/social-work

Speech pathology

With Deakin's Master of Speech Pathology, you will gain the knowledge, skills and practical experience to confidently and collaboratively work with people of any age experiencing communication or swallowing difficulties, including people with developmental or acquired speech, language or communication disorders, people with complex communication needs, people who are deaf or hard of hearing, and people with swallowing difficulties resulting from age, impairment or disability.

Course

- Master of Speech Pathology

deakin.edu.au/master-speech-pathology



Courses

IES Indigenous Entry Stream
RRES Regional and Remote Entry Scheme
LN Low number – fewer than five offers made to recent secondary education applicants
NA Not applicable
NP ATAR not published. A range of criteria can apply

X123 Deakin course code
 Course duration in years
 Trimester/Semester intake
 NIKERI Institute
Y12 Recent secondary education
NY12 Non-year 12

B Melbourne Burwood Campus
WP Geelong Waurin Ponds Campus
WF Geelong Waterfront Campus
WB Warrnambool Campus
D Online

Bachelor of Health and Medical Science (Honours) H413

ADMISSION REQUIREMENTS

Completion of a bachelor degree or a major in a related discipline, with a Weighted Average Mark (WAM) of at least 65 in all level three or four Deakin units (or in final year units for awards from other providers). Doctor of Medicine (H911) students who do not meet these criteria will require a minimum GAMSAT score of 60 and have successfully completed a minimum of 8 credit points of the Doctor of Medicine.

NY12 See webpage for further information.

deakin.edu.au/course/H413⁵

1 S1

CAMPUS

Bachelor of Health Sciences H300

ENTRY REQUIREMENTS

Y12 VCE units 3 and 4 English – study score of at least 30 (EAL) or 25 (not EAL).

NY12 See webpage for further information.

deakin.edu.au/course/H300⁵

3 T1, T2, T3

CAMPUS

ATAR	55.40	55.20	59.15	58.40
GUARANTEED ATAR ⁴	✓	✓	✓	✓

Bachelor of Health Sciences (Honours) H400

ADMISSION REQUIREMENTS

Completion of a bachelor degree or higher or major in a related discipline with a Weighted Average Mark (WAM) of at least 65 in third year units, or where relevant, final year units.

NY12 See webpage for further information.

deakin.edu.au/course/H400⁵

1 S1

CAMPUS

Bachelor of Medical Imaging H309

ENTRY REQUIREMENTS

Y12 VCE units 3 and 4:

- English – study score of at least 30 (EAL) or 25 (not EAL)
- Biology, Chemistry or Physics – study score of at least 25
- Maths – study score of at least 22 for Mathematical Methods (CAS) or Specialist Mathematics, or at least 30 for General Mathematics.

NY12 See webpage for further information.

deakin.edu.au/course/H309⁵

4 S1 **RRES¹⁴** **IES¹⁵**

CAMPUS

ATAR	95.45
GUARANTEED ATAR ⁴	NA
RRES	95.50

Bachelor of Occupational Therapy H355

ENTRY REQUIREMENTS

Y12 VCE units 3 and 4 English – study score of at least 30 (EAL) or 25 (not EAL).

NY12 See webpage for further information.

deakin.edu.au/course/H355⁵

4 T1 **RRES¹⁴**

CAMPUS

ATAR	81.75	63.20
GUARANTEED ATAR ⁴	NA	NA
RRES	82.45	78.35

Bachelor of Public Health and Health Promotion H313

ENTRY REQUIREMENTS

Y12 VCE units 3 and 4 English – study score of at least 30 (EAL) or 25 (not EAL).

NY12 See webpage for further information.

deakin.edu.au/course/H313⁵

3 T1, T2

CAMPUS

ATAR	65.95	LN	LN
GUARANTEED ATAR ⁴	✓	✓	✓

Bachelor of Public Health and Health Promotion (Honours) H412

ADMISSION REQUIREMENTS

Completion of a bachelor degree or higher or major in a related discipline with a Weighted Average Mark (WAM) of at least 65 in third year units, or where relevant, final year units.

NY12 See webpage for further information.

deakin.edu.au/course/H412⁵

1 S1

CAMPUS

Bachelor of Social Work H330

ENTRY REQUIREMENTS

Y12 VCE units 3 and 4 English – study score of at least 30 (EAL) or 25 (not EAL).

NY12 See webpage for further information.

deakin.edu.au/course/H330⁵

4 T1 **NIK¹⁶** **RRES¹⁴**

CAMPUS

ATAR	60.10	LN	60.10
GUARANTEED ATAR ⁴	NA	NA	NA
RRES	62.75	NA	NA

Courses

IES Indigenous Entry Stream
RRES Regional and Remote Entry Scheme
LN Low number – fewer than five offers made to recent secondary education applicants
NA Not applicable
NP ATAR not published. A range of criteria can apply

X123 Deakin course code
 ⌚ Course duration in years
 📅 Trimester/Semester intake
 🏢 NIKERI Institute
Y12 Recent secondary education
NY12 Non-year 12

B Melbourne Burwood Campus
WP Geelong Waurrn Ponds Campus
WF Geelong Waterfront Campus
WB Warrnambool Campus
⓪ Online

DOUBLE DEGREES

Bachelor of Health Sciences/Bachelor of Arts **D391**

ENTRY REQUIREMENTS

Y12 VCE units 3 and 4 English – study score of at least 30 (EAL) or 25 (not EAL).
NY12 See webpage for further information.

deakin.edu.au/course/D391⁵

⌚ 4 📅 T1, T2, T3

CAMPUS	B	WP	⓪
ATAR	61.25	63.20	LN
GUARANTEED ATAR ⁴	✓	✓	✓

Bachelor of Nursing/Bachelor of Public Health and Health Promotion **D381**

ENTRY REQUIREMENTS

Y12 VCE units 3 and 4 English – study score of at least 30 (EAL) or 25 (not EAL).
NY12 See webpage for further information.

deakin.edu.au/course/D381⁵

⌚ 4 📅 T1

CAMPUS	B	WF
ATAR	80.50	LN
GUARANTEED ATAR ⁴	NA	NA

Bachelor of Public Health and Health Promotion/Bachelor of Commerce **D379**

ENTRY REQUIREMENTS

Y12 VCE units 3 and 4 English – study score of at least 30 (EAL) or 25 (not EAL).
NY12 See webpage for further information.

deakin.edu.au/course/D379⁵

⌚ 4 📅 T1, T2

CAMPUS	B	WP	⓪
ATAR	81.65	NP	LN
GUARANTEED ATAR ⁴	✓	✓	✓

Bachelor of Vision Science/Master of Optometry **D302**

ENTRY REQUIREMENTS

Y12 VCE units 3 and 4 English – study score of at least 30 (EAL) or 25 (not EAL).
NY12 See webpage for further information.

deakin.edu.au/course/D302⁵

⌚ 3.5 📅 T1 RRES¹⁴ IES¹⁵

CAMPUS	WP
AATAR	90.35
GUARANTEED ATAR ⁴	NA
RRES	86.90

Work placement requirements

Students are required to undertake a Police Record Check and a Working with Children Check prior to undertaking placements in accordance with the *Worker Screening Act 2020*.¹⁷ Some placements may also have immunisation requirements. See course webpages for further information.

Can we help you find your pathway into university?

There are many different ways you can get into an undergraduate course at Deakin. Whether you get the ATAR you hoped for or not, we'll make sure your hard work is rewarded with a pathway to university. Try our Pathways Finder tool and explore the options that might be available to you at deakin.edu.au/pathways-finder or call us on 1800 693 888.



Endnotes

- 1 2025 Employment Projections – for the ten years to 2035, Jobs and Skills Australia.
- 2 ShanghaiRanking’s Global Ranking of Academic Subjects 2025.
- 3 Graduate Outcomes Survey 2024, Quality Indicators for Learning and Teaching (QILT), based on overall employment for domestic undergraduates.
- 4 Deakin guaranteed ATARs and more information are available at: deakin.edu.au/deakin-guaranteed-atar.
- 5 Visit our course webpage for full details about: course structure, pre-course and entry requirements, unit selection options, minor and major options, campus and trimester availabilities, WIL options, accreditations, Deakin Guaranteed ATAR information, and more.
- 6 2025 Employment Projections – for the five years to 2030, Jobs and Skills Australia.
- 7 Rehabilitation inc. Occupational Therapy (Undergraduate), ComparED (QILT – Course Experience Questionnaire), 2023–2024.
- 8 Rehabilitation inc. Occupational Therapy (Undergraduate), ComparED (QILT – Graduates Outcomes Survey), 2022–2024.
- 9 Australian Graduate Recruitment Industry Awards 2017, 2018, 2019, 2020 winner for most popular career service in Australia; Employability award, 2021 Australian Financial Review Higher Education Awards.
- 10 Social Work (Undergraduate), ComparED (QILT – Graduates Outcomes Survey), 2022–2024.
- 11 Social Work (Undergraduate), ComparED (QILT – Course Experience Questionnaire), 2023–2024.
- 12 For more information, visit education.gov.au/commonwealth-prac-payment-cpp.
- 13 Australian Graduate Survey 2010–2015, Graduate Outcomes Survey 2016–2023, Quality Indicators for Learning and Teaching (QILT).
- 14 Visit deakin.edu.au/rres for more information.
- 15 This course has an Indigenous Entry Stream, which offers an alternative pathway into the course for non-Year 12 Indigenous students. For more information, visit deakin.edu.au/ies.
- 16 This course is also available at the National Indigenous Knowledges, Education, Research and Innovation (NIKERI) Institute. Find out more at deakin.edu.au/nikeri.
- 17 *Worker Screening Act 2020*, (No. 34, 2020). Accessible at legislation.vic.gov.au.

Contact us

We’re here to help

We have staff at each of our campuses who are more than happy to answer your general queries.

Prospective student enquiries

Domestic students

1800 693 888

deakin.edu.au/help-hub

International students

+61 3 9918 9188

study@deakin.edu.au

Social media at Deakin

 facebook.com/DeakinUniversity

 instagram.com/DeakinUniversity

 tiktok.com/@deakinuni

 linkedin.com/school/deakin-university

Other useful websites

vtac.edu.au

studyassist.gov.au

myfuture.edu.au

youthcentral.vic.gov.au

Your pathway to a PhD or research degree

For over 50 years, Deakin research has been shaping the world. Did you know that studying at the honours level gives you valuable research experience and opens doors to a future PhD or masters by research?

To find out more, visit: deakin.edu.au/research.

Find an honours degree

Want to know more about studying at the honours level?

To get more information visit: deakin.edu.au/study/how-to-apply/honours-degree-applications.

Published by Deakin University in February 2026. While the information published in this guide was accurate at the time of publication, Deakin University reserves the right to alter, amend or delete details of course offerings and other information published here. For the most up-to-date course information, please view our website at deakin.edu.au.

Deakin University CRICOS Provider Code: 00113B
TEQSA Provider ID: PRV12124



DEAKIN OPEN DAY

Warrnambool
SUNDAY 2 AUGUST

Geelong Waterfront and Waurn Ponds
SUNDAY 16 AUGUST

Melbourne Burwood
SUNDAY 23 AUGUST

openday.deakin.edu.au

Deakin University CRICOS Provider Code: 00113B