



# Deakin at a Glance

— 2026



Top 10 university in Australia



Balanced excellence in education and research



Top 5 in Australia for research quality





▲ **Photo:**  
Professor Iain Martin, President  
and Vice-Chancellor

## ▶ Vice-Chancellor's message

The Deakin University Act handed down more than 50 years ago affirmed Deakin's ambition 'to be a catalyst for positive change for the individuals and the communities it serves'.

Our fundamental role is delivering outcomes that benefit society through exploring and developing great ideas. All efforts across our education and research portfolios are focused on achieving this endeavour as we collaborate with others to effect 'local change that matters beyond the local'.

As Australia's largest university excelling in both education and research, we are committed to upholding the highest academic standards while addressing the broader challenges facing society.

Deakin is committed to maintaining the social licence of universities – demonstrating the value we create for our communities. We're dedicated to building trust through legitimacy, credibility and accountability.

**Professor Iain Martin**  
President and Vice-Chancellor

## ▶ Acknowledgement

We acknowledge the Traditional Custodians of our lands and waterways, and we pay respects to Elders past, present and emerging.

Deakin campuses are built on the traditional lands of the Wadawurrung people of the Geelong region, the Wurundjeri and Boon Wurrung people of the greater Melbourne region, and the Gunditjmarra people of Western Victoria.

# ► What makes us Deakin

## Values

Our values guide our actions and decisions, shaping how we act, collectively and individually.



### Excellent

We strive for excellence in all aspects of our work.



### Inclusive

We value diversity, embrace difference, seek to engage and welcome all.



### Brave

We make bold decisions, demonstrate courage and ambition, and we support personal responsibility and accountability.



### Dynamic

We are innovative and entrepreneurial, solving problems with creativity and flexibility.



### Sustainable

We care about our shared future, integrating economic, environmental and social dimensions of sustainability in all we do.



### Ethical

We conduct our business with the highest standards of professional behaviour and integrity.

## Ambition

Deakin University's innovation and excellence in both education and research generate ideas that transform lives and communities. We aim to be Australia's most progressive and responsive university, leading in blending digital capability with our distinctive campus precincts.

We leverage strong partnerships to maximise the social, cultural and economic impact we deliver regionally, nationally and globally.

## ► Balanced excellence in education and research

Deakin excels in both education and research, performing highly in both areas globally – a feat few can deliver at scale.

The symbiotic relationship between education and research is what sets universities apart from research institutes and teaching colleges.

Deakin excels at this dual focus, embedded in our strategic priorities including:

- educational inequity and the skills gap
- enhancing student outcomes
- expanding the research ecosystem in collaboration with industry and community partners.

By integrating research into teaching, we expose students to cutting-edge developments and encourage real-world application of knowledge.

Students also bring fresh perspectives to research, driving innovation and discovery. This dynamic environment fosters intellectual growth and delivers impact far beyond the University's walls.

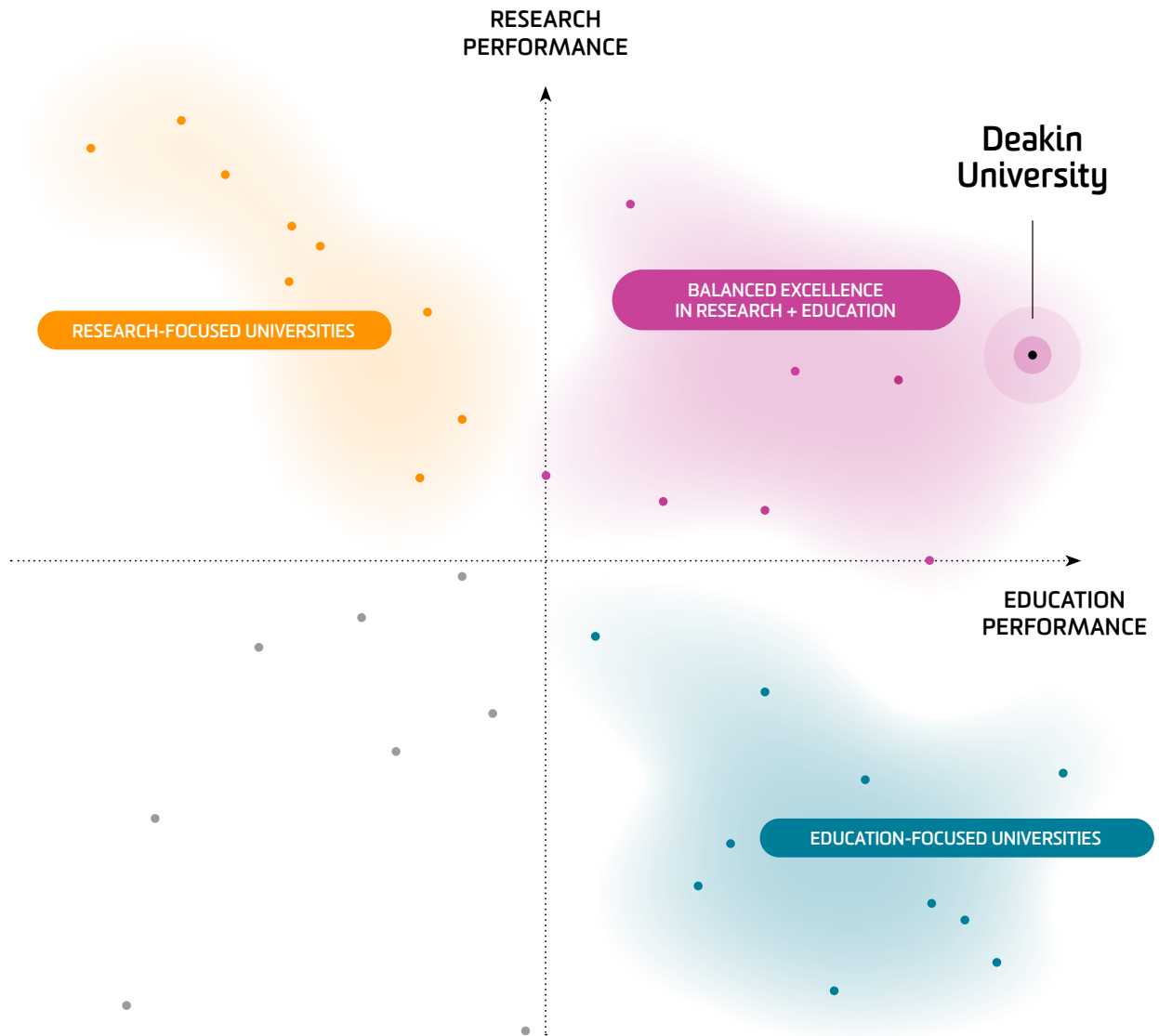
Over the past five years, Deakin has delivered significant benefits for industry and community partners, directing increasing research income to areas where it is needed most. This reflects our capacity to address broader societal needs while achieving academic excellence.



▲ **Photo:**  
Researchers at the Queenscliff Marine Science Centre

◀ **Photo:**  
Associate Professor Susanna Venn and graduate researcher Mohan Pandey, School of Life and Environmental Sciences

# Performance in education and research at Australian universities



Education performance is the mean score for overall quality of educational experience (undergraduate and postgraduate coursework), QILT 2024 Student Experience Survey, Australian Government Department of Education.

Research performance is measured by publication volume and proportion of publications in the top 10% (number of citations per paper), CWTS Leiden Ranking Open Edition 2025 – Australian universities.

# ▶ Deakin at a Glance



## Top 10

universities in Australia<sup>1</sup>



## 9 out of 10

Deakin undergraduates are in full-time employment three years after graduation<sup>2</sup>



## #1

sport science school worldwide<sup>3</sup>



## #1

university in Victoria for postgraduate teaching engagement and quality (external)<sup>4</sup>



10 researchers in the

## Top 0.1%

worldwide in their field<sup>5</sup>



## #1

in Victoria for undergraduate overall satisfaction 15 years running<sup>6</sup>

### INTERNATIONAL NETWORK

International offices	13
Research institutes and centres	12
International branch campuses	2
Research initiative	1

### STAFF AND ALUMNI

Total staff/FTE	5,654 / 4,988
Academic staff (FTE)	2,099
Professional staff (FTE)	2,889
Alumni community	370,000+
Global distribution	164 countries
Number of donors	8,500+

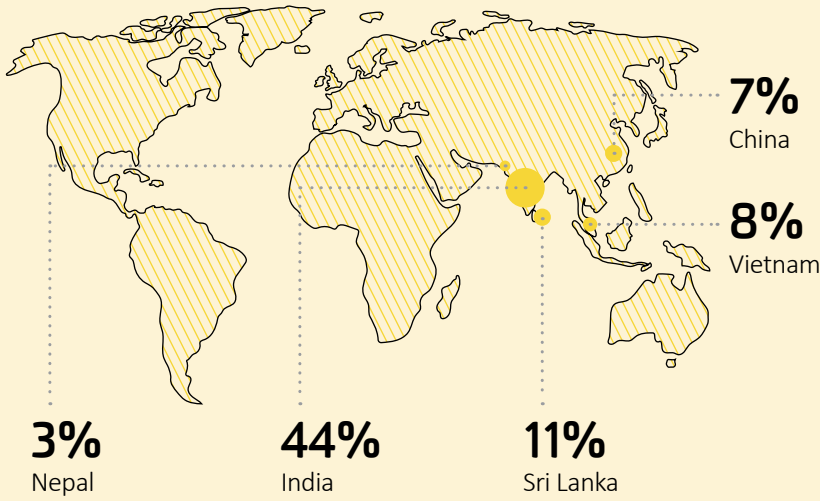
### FINANCES

Research Income **\$185.0m**

### ENROLMENTS By campus



**ENROLMENTS International – top countries of origin**



**ENROLMENTS**

Total enrolments

**61,704**

Equivalent full time student load (EFTSL)

**43,023**

Undergraduate

**39,766**

Postgraduate

**18,954**

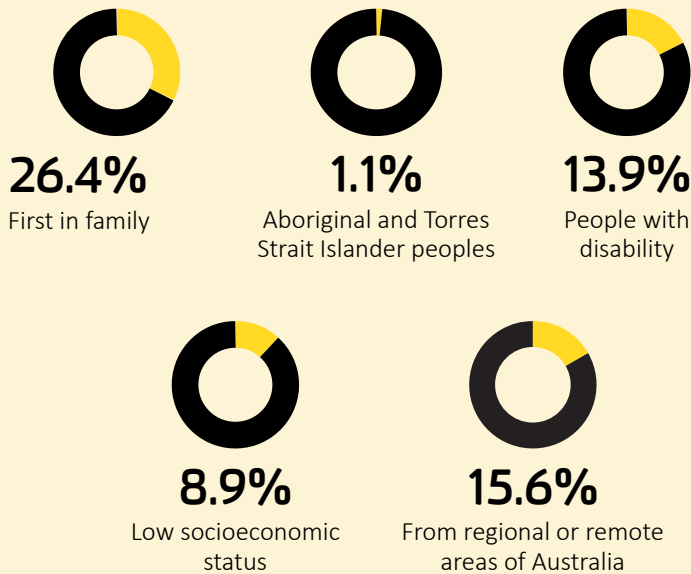
Higher Degree by Research (HDR)

**2,253**

Non-award

**731**

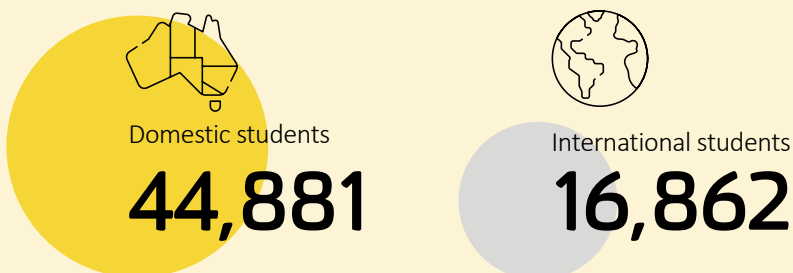
**ENROLMENTS Equity and inclusion**



**ENROLMENTS By faculty**

Arts and Education	14,155
Business and Law	15,111
Health	17,297
Science, Engineering and Built Environment	14,507
Other	634

**ENROLMENTS Domestic and international\***



1. ShanghaiRanking 2025 ARWU
2. QILT Graduate Outcomes Survey – Longitudinal 2024
3. ShanghaiRanking Global Ranking of Sport Science Schools and Departments 2025.
4. QILT Student Experience Survey 2024
5. Clarivate Highly Cited Researchers 2025
6. QILT Graduate Outcomes Survey 2024

\*Note: due to students gaining residency during the year, a very small number of individuals appear in both categories, resulting in the sum slightly exceeding the total course enrolments figure.

## ► Australia's most progressive university

For more than 50 years Deakin has championed distance education, accessibility and innovation.

We are ranked among the top 250 institutions in the world (QS 2025, *THE* 2025), with subjects regularly appearing in the top 50 worldwide.

Since 1974, we have responded to each challenge by adapting and emerging stronger – and this remains true even as the world continues to change:

- We responded quickly to the emergence of generative AI, establishing principles that guide our actions and empower students and staff to leverage the technology responsibly. Deakin is already recognised as a global leader in this area.
- The expansion of our engineering offering to the Burwood Campus augments the work we have been doing at Waurm Ponds for many years and will help to produce the additional 100,000 engineers Australia will need by 2030.

We have a long history of perfecting distance and online education and we continue to deliver significant outcomes in course satisfaction.

We are extremely proud of our achievements over the last five decades, of our status nationally and internationally, and of the value we have created for our communities and partners.

We are always working to help realise the best future for our communities while forging a distinctive identity as Australia's most progressive university.

### Global rankings

**Quacquarelli Symonds (QS) 2025**  
207 in the world

**ShanghaiRanking (ARWU) 2025**  
201-300 in the world

**Times Higher Education (THE) 2025**  
201-250 in the world

## TOP 50

- ▶ Hospitality and Tourism Management (#26)

---

- ▶ Education (#33)

---

- ▶ Textile Science and Engineering (#35)

---

- ▶ Public Health (#36)

## TOP 100

- ▶ Ecology

---

- ▶ Metallurgical Engineering

---

- ▶ Psychology

---

- ▶ Telecommunication Engineering

## TOP 150

- ▶ Artificial Intelligence

---

- ▶ Communication

---

- ▶ Computer Science and Engineering

---

- ▶ Development Studies

---

- ▶ Engineering

---

- ▶ Finance

---

- ▶ Food Science and Technology

---

- ▶ Law

---

- ▶ Materials Science and Engineering

---

- ▶ Sociology

## TOP 200

- ▶ Accounting

---

- ▶ Anatomy and Physiology

---

- ▶ Anthropology

---

- ▶ Architecture/Built Environment

---

- ▶ Automation and Control

---

- ▶ Civil Engineering

---

- ▶ Clinical Medicine

---

- ▶ Data Science

---

- ▶ Economics and Econometrics

---

- ▶ Electrical and Electronic Engineering

---

- ▶ Geography

---

- ▶ Information Systems

---

- ▶ Instruments Science and Technology

---

- ▶ Life Sciences

---

- ▶ Media Studies

---

- ▶ Philosophy

---

- ▶ Transportation Science and Technology

## HIGHLIGHTS



1<sup>st</sup> for  
Sports  
Science\*



11<sup>th</sup> for  
Sports  
related  
subjects



14<sup>th</sup> for  
Nursing



15<sup>th</sup> for  
Business  
Administration

World rankings by subject are from one or multiple of: QS World University Rankings by Subject 2026; ShanghaiRanking Global Ranking of Academic Subjects 2025; Times Higher Education (THE) World University Rankings by Subject 2026

\* ShanghaiRanking 2025 Global Ranking of Sport Science Schools and Departments

## ▶ Partnering with Deakin

### Purpose-driven partnerships. Real-world impact.

Universities play a critical role in addressing the complex challenges shaping our future. The most effective institutions do this not in isolation, but through deep, purpose-driven partnerships that connect knowledge and capability with real-world application.

At Deakin, partnerships are central to how we deliver impact. We work with industry, government, academia and community partners to translate capability into regional, national and global outcomes. By concentrating our efforts on shared challenges, we unlock opportunity and create long-term value.

A partnership with Deakin provides access to world-class talent, education, research and development, as well as specialised facilities and infrastructure.

More importantly, it provides a platform that is connected across the University, enabling the design and delivery of solutions that achieve meaningful impact.

We know strong partnerships do not happen by chance – they happen by design. In 2025, Deakin launched Partnerships by Design, a whole-of-university approach to developing and managing high-value partnerships. We have a consistent, structured pathway for engagement, ensuring partnerships are purposeful, aligned and positioned for long-term success. Supported by enterprise systems and underpinned by strong, risk-based governance and commercialisation capability, Deakin manages partnerships consistently and effectively at scale.

Through partnerships, Deakin is strengthening its ability to deliver enduring value, building capability, deepening relationships and driving real-world impact for our partners and the communities we serve.

## Partner with Deakin to drive real-world solutions.

Submit an inquiry:  
[deakin.edu.au/partnerships-and-engagement](https://deakin.edu.au/partnerships-and-engagement)



## CASE STUDY

## ▶ Restoring Australia's underwater ecosystems

The Deakin Marine Research and Innovation Centre has worked alongside community, government and education partners to drive pioneering research that is protecting Victoria's kelp forests.

An essential foundation species for the Great Southern Reef, golden kelp shelters marine life and captures carbon dioxide. However, in recent decades climate change and surging urchin populations have devastated more than half of Port Phillip Bay's rocky reefs.

Under the Victorian Government-funded Port Phillip Bay Golden Kelp Restoration Project, Deakin partnered with The Nature Conservancy, The University of Melbourne and Parks Victoria to map and monitor reefs, cull

urchins and restore kelp at scale. Researchers at Deakin's Queenscliff Marine Science Centre cultivated kelp across multiple life stages before juvenile kelp was outplanted in targeted areas, rebuilding critical habitats for abalone and rock lobster.

Within seven months, the kelp averaged 20 centimetres and were reproducing. In 2025, a further 500,000 juvenile kelp were deployed, proving that large-scale restoration of Australia's underwater ecosystems is achievable.

[Learn more about the research into golden kelp restoration.](#)

▲ **Photo:**  
Researchers surveying a kelp forest



▶ **Photo:**  
Associate Professor Prue Francis, Deakin Marine Research and Innovation Centre

## ► Our commitment to sustainability

As a core value of the University, sustainability is a priority. Deakin remains steadfast in its commitment to advancing sustainability through quality education, sustainable campus operations and research.

### Campus improvements

#### Biodiversity assets

Habitat Restoration and Ecological Monitoring plans have been created to support the collective restoration of 53 hectares across our southwest Victorian campuses, creating biodiversity corridors at these locations.

#### Waste

New waste recovery walls have been installed at Waterfront and Burwood campuses, helping to divert batteries and small e-waste from landfill.



**Top 10**  
In Australia for  
environmental research

\* QS World University Rankings: Sustainability 2026



### Initiatives in our communities

#### Melbourne Burwood

##### Gardiners Creek collaboration

In 2025, development of a catchment-scale strategic plan for the Gardiners Creek (Kooyongkoot) catchment has further enhanced biodiversity restoration on land adjacent to the Burwood Campus.

#### Warrnambool

##### Hycel Technology Hub

Designed as a carbon neutral building, this Australian-first initiative supports hydrogen fuel cell research and the adoption of hydrogen as part of the clean energy transition.

##### Electric vehicle charging

Installation of electric vehicle charging stations at Warrnambool completes the rollout across all Deakin campuses.



▲ **Photo:**  
Constructed wetland at  
Deakin's Waurn Ponds  
Campus.

## Geelong

### Delama Dja Walk

Developed in collaboration with Wadawurrung Traditional Owners, the Delama Dja (embrace Country) Walk highlights Climate Ready Campus initiatives and celebrates the cultural significance of Country.

### Renewable Energy Microgrid

By purchasing 100% renewable electricity and drawing on our Renewable Energy Microgrid, Deakin will be entirely powered by renewable energy. We are also planning to expand solar PV across all our campuses.

### Integrated Water Management

In partnership with Barwon Water, we are bringing Class A recycled water to Waurn Ponds. Flood mitigation measures are also helping to future-proof the Campus and protect it from the impact of extreme weather events.

► **Photo:**  
The Renewable Energy  
Microgrid at the Geelong  
Waurn Ponds Campus

## Queenscliff

### Deakin Marine Research and Innovation Centre

In collaboration with the Australian food industry, Deakin Marine helps develop feeds that are sustainably sourced and create a smaller carbon footprint. It also supports research to restore lost marine habitats that improve biodiversity and help keep our waterways clean and healthy.



## ▶ Alumni and philanthropy

At Deakin, we create meaningful impact through education and research that drives positive change in the communities we serve.

But we don't do it alone. Our alumni, staff and supporters are key partners in this mission, working alongside us to enrich the student experience, strengthen industry connections, support critical research and enable equitable access to education. Whether as mentors, employers, collaborators or donors, our partners create opportunities, drive innovation and support us to deliver real benefits.

Our global community of 370,000+ Deakin alumni are more than graduates – they are leaders, innovators and agents for positive change.

Through their expertise, influence, industry connections and generosity, they enhance course satisfaction, employ graduates, build industry

partnerships, and attract and support students. From rural Australia to the world stage, Deakin alumni are tackling today's biggest challenges.

Philanthropy amplifies this mission. Our *Together* campaign is Deakin's call to imagine what's possible and make it real. By raising \$150 million and connecting with 150,000 of our alumni, we'll open more doors for students, accelerate new discoveries and build a more equitable, sustainable world for all. Together with our dedicated community of alumni and donors, we're investing in groundbreaking research and equity-focused scholarships, removing barriers to education and driving solutions for a better tomorrow. Every gift, no matter the size, helps turn ideas into impact, creating change where it's needed most.



▲ **Photo:**

Former Chancellor Dr John Stanhope AM launched *Together* at the annual Chancellor's Dinner 2025

Through our *Together* campaign, we are raising \$150 million and connecting with 150,000 alumni to spark discoveries, open pathways and drive lasting change where it is needed most:

[giving@deakin.edu.au](mailto:giving@deakin.edu.au)

+61 3 9244 5150

[together.deakin.edu.au/alumni](https://together.deakin.edu.au/alumni)



#### CASE STUDY

## ▶ A lasting legacy of lifelong learning

The legacy of Dr Lewis (PhD '08) and Libby Hughes lives on at Deakin University. Their \$1.64 million bequest continues to shape education and research through the Libby and Lewis Hughes Scholarship, a transformative gift to support research into the role of lifelong learning in community building.

This enduring partnership with Deakin reflects a shared commitment to education's impact on society, ensuring the Hughes' passion for learning inspires future generations.

---

Read more wonderful stories about giving through Deakin:

[together.deakin.edu.au](https://together.deakin.edu.au)

▲ **Photo:**  
Dr Lewis Hughes at his Mount Dandenong home and gardens in 2015

## Our campuses

Headquartered in Geelong, Deakin University has campuses in central Geelong, Waurin Ponds, Melbourne, Warrnambool, GIFT City in India, Bandung in Indonesia, and a vibrant online learning environment.



### Geelong Waterfront Campus

The Geelong Waterfront Campus is Deakin's headquarters. Set in the heart of Geelong, the Campus is close to the Geelong Railway Station and looks out on Corio Bay. Its heritage buildings have been transformed to accommodate cutting-edge learning spaces such as professional standard architecture and creative arts studios, and allied health laboratories.



### Melbourne Burwood Campus

Distinguished by its striking modern architecture, the Melbourne Burwood Campus is Deakin's largest, accommodating more than 30,000 students. It features innovative and technology-rich learning spaces including the Motion.Lab professional screen and motion technology facility, a virtual production and television studio, industry standard food nutrition labs and robotics laboratories. Our commitment to contemporary teaching with flexible learning spaces is apparent in modern facilities including the Deakin Law School building, clinical nursing simulation centre, and an exercise and sport science training facility.



### Geelong Waurin Ponds Campus

Deakin's original site, the Geelong Waurin Ponds Campus is set on expansive landscaped grounds nine kilometres south-west of Geelong. It is home to high-class sporting facilities, a solar energy microgrid, the Geelong Future Economy Precinct, state-of-the-art engineering facilities, and the Deakin Medical School and Regional Community Health Hub.



### **Warrnambool Campus**

Established on Victoria's beautiful south-western coast, the Warrnambool Campus offers a base for numerous community partnerships and a supportive, engaged community. The Campus is home to a world-class clinical nursing simulation centre and the groundbreaking hydrogen research facility, Hycl.



### **GIFT City, India Campus**

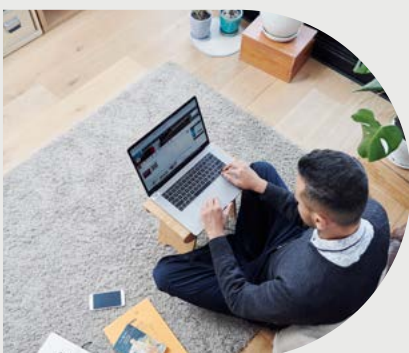
Located in the heart of Gujarat International Finance Tec-City (GIFT City), Deakin's GIFT City Campus is the first international branch campus in India. Focused on preparing postgraduate students for the rapidly advancing digital economy, it offers a vibrant atmosphere that includes cyber security laboratories and state-of-the-art digital classrooms. It also facilitates internship opportunities with onsite industry partners.



### **Bandung, Indonesia Campus**

Deakin University Lancaster University Indonesia (DLI) officially opened in September 2025 in Bandung. It is the first UK-Australia joint international campus, setting a new standard for transnational education.

The Bandung Campus offers a combination of British and Australian degree subjects, establishing links with local institutions and industry, and will continue to build on our history of meaningful connections with Indonesia.



### **Online education and interaction**

For 50 years, Deakin has been perfecting distance and digital learning. One third of our students are undertaking an online degree. Our dynamic community uses digital learning technologies to take part in all aspects of education, from classes to accessing student support services.

Premium digital systems have become a core part of learning and teaching at Deakin, contributing – alongside our Library – to our learning resources being consistently rated by students as among the best in Australia.

## ► Deakin internationally

Our international commitment delivers knowledge and ideas that transcend borders and cultures. We prepare our students to be global citizens and lead work that creates enduring impact.

### Worldly education

Deakin's wide global footprint – comprising campuses, international offices and in-country staff – creates diverse opportunities for students, staff and partners to engage with world-class education and research.

Deakin is delivering on this vision through two landmark international branch campuses:

- Gujarat International Finance Tec-City (GIFT City) was the first international university branch campus in India, bridging academic excellence with industry connection in one of the world's fastest-growing economies.
- Deakin University Lancaster University Indonesia was the world's first UK-Australia joint international campus. Located in Bandung, it represents a significant step forward in transnational education.

Together, these campuses realise Deakin's belief that quality education should be accessible wherever students are. They also reinforce our reputation as one of Australia's most innovative universities, pioneering digital education that is flexible, inclusive and globally connected.



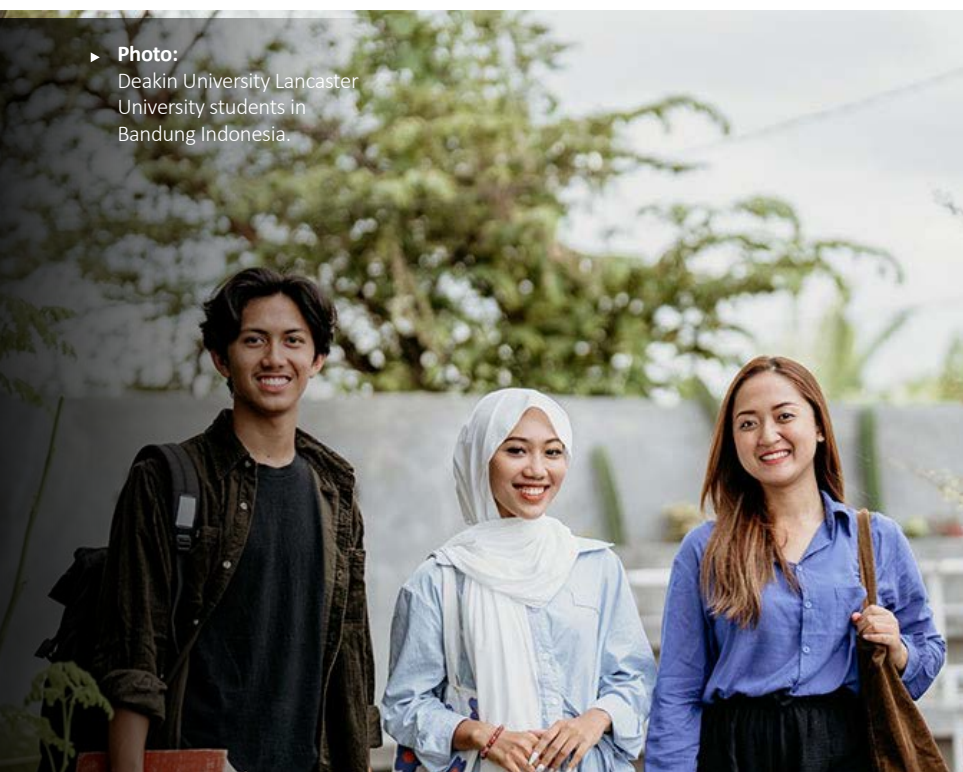
### International research and partnerships

Collaboration sits at the heart of Deakin's international engagement – and our partnerships address some of the most significant challenges of our time. Across the globe, we have built enduring relationships with institutions, governments and communities.

Two initiatives are strengthening these connections further:

- The IIT Madras-Deakin Research Academy supports more than 100 active projects and more than 45 scholars worldwide – a broad and growing portfolio with global reach.
- The Global Engagement Fund pilot, launched in 2025, supplements international travel costs for professional, teaching and research staff, maximising research and education outcomes.

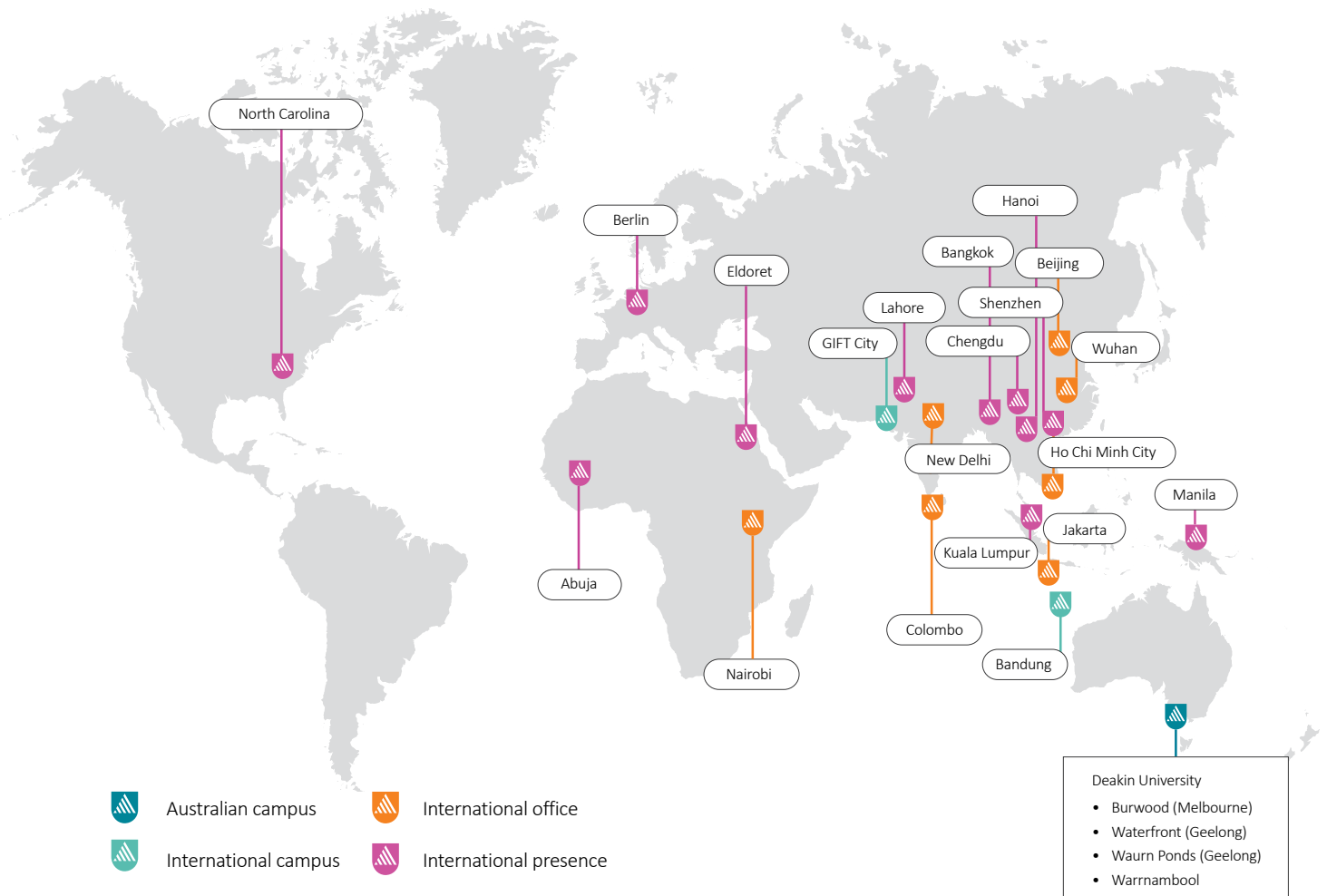
► **Photo:**  
Deakin University Lancaster University students in Bandung Indonesia.





◀ **Photo:**  
International students at Melbourne  
Burwood Campus

## Our global presence



# Our campuses

## Melbourne Burwood Campus

221 Burwood Highway  
Burwood Victoria 3125  
Australia  
+61 3 9244 6100

## Geelong Waterfront Campus

1 Gheringhap Street  
Geelong Victoria 3220  
Australia  
+61 3 5227 1100

## Geelong Waurm Ponds Campus

75 Pigdons Road  
Waurm Ponds Victoria 3216  
Australia  
+61 3 5227 1100

## GIFT City Campus

DevX Gift Aspire-3  
Gujarat International Finance Tec-City  
Gujarat 382355  
India  
+91 79 69326600

## Warrnambool Campus

Princes Highway  
Warrnambool Victoria 3280  
Australia  
+61 3 5563 3100

## Bandung Campus

Jl. Moch. Toha No.77,  
Cigereleng, Kec. Regol, Kota  
Bandung, Jawa Barat 40253,  
Indonesia  
+62 22 30010120

