

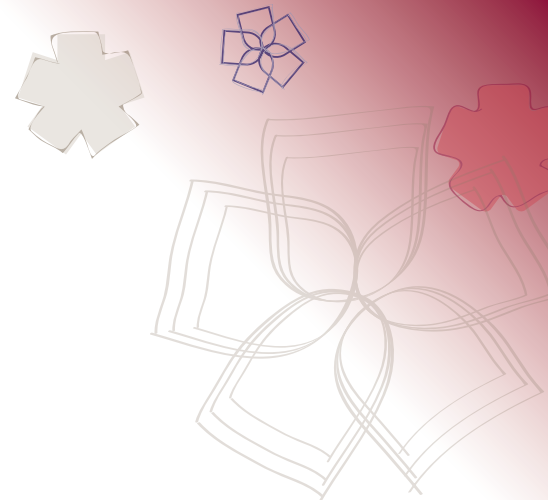
# ANNUAL REPORT 2010

**ALFRED  
DEAKIN  
RESEARCH  
INSTITUTE**



**DEAKIN**  
UNIVERSITY AUSTRALIA

# Contents



## Director's report

### Members

Core staff of the Alfred Deakin Research Institute	4
Alfred Deakin Research Institute faculty affiliated members 2010	4
Newly appointed core staff	5
Adjunct Professors	6

### Notable achievements 2010

Research funding	8
Partnerships	8
Public engagements	9

### Research

Research Leadership	10
Research programs	10
Leadership	11
Development	12
Governance	10
ADRI Working Paper Series	10

### Public engagement and external relationships

Public events 2010	15
Visitors	18

### Financial statement

### Advisory Board

### Appendix – Research outputs

Core staff	22
Affiliated members	24







# Director's Report

## Introduction

The year 2010 was one of expanded research activity and impact, of sharpening the focus of the Alfred Deakin Research Institute (ADRI), and of continued growth, especially towards the end of the year when new members were recruited. The vision of the ADRI remains:

*to generate and promote research that will inform public debate and public policy. Research will feature cross-disciplinary and problem orientated approaches, based on collaborative relationships within Deakin University and with external partners, including government entities. From its foundation in the humanities and social sciences... the Alfred Deakin Research Institute will promote research that integrates knowledge generated from other disciplines in ways that address problems of local, national and international importance*

## Staged Growth

One of the most important tasks of 2010 was to grow research that was distinctive and marked paths towards bigger concentrations of researchers demonstrating excellence and impact. In addition to heeding initial guidelines important to ADRI – the legacy of Alfred Deakin, connections with established strengths in the Faculty of Arts and Education and definitions of excellence provided by the Australian Research Council – we attached high priority to the building of research partnerships with external organisations, and to a focus on quality in publications, consistent with the Excellence for Research in Australia (ERA) initiative.

Pleasingly, a number of appointments at the end of 2010, mostly commencing early in 2011, has recently boosted progress towards research distinctiveness, mass and excellence. These appointments have also completed the first stage of ADRI's growth, namely the development of a vibrant research hub at the Geelong Waterfront Campus where the Institute's headquarters are located. They also include some notable honorary appointments. Brief profiles of newly-joined members are provided in the following section.

## Focus

The Institute's research activity has been sharpened to fall under three headings (and their interstices): leadership; development; and governance. In 2010,

discovery  
excellence  
application



the disciplinary expertise underpinning activity under these themes stemmed mainly from international development and economics, history, politics, and anthropology. A strong theme of regional research and sustainability has emerged in conjunction with these themes.

Notable achievements are listed in the following section. I am confident that these bode well for 2011 and beyond.

## Governance

Having been established by Council Regulation under Statute 2.4 – University Statutes, ADRI is part of the Faculty of Arts and Education. Towards the end of 2009 ADRI joined with cognate groups of research strength to form a new Strategic Research Centre, one of eleven such centres at Deakin University. The title of this Strategic Research Centre is 'Comparative Social Research' (CSR). In other words, ADRI is currently a significant component part of the new Strategic Research Centre.

In its communications with Federal Government, Deakin University has signalled an importance attaching to the recently established ADRI. This logically leads to the need for some further consideration of the ADRI-CSR-Faculty relationships and the most appropriate governance to yield best possible research outcomes and profile.

**Professor David Lowe**  
DIRECTOR  
Alfred Deakin Research Institute

## Members

### Core staff of the Alfred Deakin Research Institute



**Professor David Lowe**  
Director



**Professor Mark McGillivray**  
Chair in International Development



**Dr Jonathan Ritchie**  
Senior Research Fellow



**Associate Professor Kristina Murphy**  
Research Partnerships Manager  
(resigned December 2010)



**Ms Skye Priddle**  
Administration Manager  
(from November 2010)



**Ms Michelle Verso**  
Project Manager  
(from November 2010)  
Administration Manager  
(until October 2010)



**Mr Bevan Murphy**  
Research Assistant

### Alfred Deakin Research Institute faculty affiliated members

Associate Professor Rohan Bastin

Dr Joanna Cruickshank

Dr Helen Gardner

Associate Professor Louise Johnson

Professor Damien Kingsbury

Professor Marian Simms

Dr Christopher Waters

Associate Professor Matthew Clarke

Associate Professor Elizabeth Eckermann

Associate Professor Linda Hancock

Dr Tanya King

Associate Professor Kevin O'Toole

Professor David Walker

Dr Bart Ziino

## Newly appointed core staff of Alfred Deakin Research Institute

(appointed late 2010, commenced early 2011)

### **Associate Professor Peter Kelly, Principal Research Fellow**

Associate Professor Peter Kelly is a social theorist/social researcher who has published extensively on young people, the practice of Youth Studies; social theory and globalisation. He has recently joined Deakin after working in the School of Political and Social Inquiry in the Faculty of Arts at Monash University from 2005-2011. Peter has an extensive research background in youth studies and an ongoing research interest in examining the challenges faced by young people as workers, and the ways in which youth transitions - and the family, employment, study and peer relationships shaped by these processes of transition - are being remade by the emergence of a globalised knowledge economy. He is currently working with Associate Professor Lyn Harrison (School of Education, Deakin University) on an ARC Linkage project in collaboration with the third sector organisation Mission Australia. This project (*Capacity Building and Social Enterprise: Individual and Organisational Transformation in Transitional Labour Market Programs*) is conducting research in Mission Australia's social enterprise Transitional Labour Market Program at the Charcoal Lane restaurant in Gertrude St, Fitzroy. Associate Professor Kelly joined ADRI in February 2011.

### **Associate Professor Simon Feeny, Principal Research Fellow (0.4)**

Associate Professor Simon Feeny is a Development Economist. His research interests are Development Economics, Foreign Aid Effectiveness and the Millennium Development Goals. Much of his research has examined the allocation and effectiveness of foreign aid with a focus on the Pacific region. He has undertaken work for a number of organisations including the Australian Agency for International Development (AusAID), the United Nations University World Institute for Development Economics Research (UNU-WIDER) and the South Pacific Forum Secretariat. He has undertaken work in Cambodia, Fiji, Papua New Guinea, the Solomon Islands and Vanuatu. He is a former intern of the United Nations University's World Institute for Development Economics Research (UNU-WIDER). Associate Professor Feeny joins ADRI in June 2011.

### **Dr Santosh Jatrana, Senior Research Fellow**

Dr Santosh Jatrana is a demographer with particular research interest in the field of social demography, including socioeconomic inequality and mortality, child health, gender, demography of ethnic minorities, ageing and health, migrant health, and maternal employment and family commitments. She has recently applied for ARC funding for a major project assessing relationships between immigrants and health in Australia. Dr Jatrana joined ADRI in February 2011.

### **Dr Sharon Crozier-De Rosa, Alfred Deakin Postdoctoral Fellow**

Dr Sharon Crozier-De Rosa is an Alfred Deakin Postdoctoral Research Fellow, working within ADRI on a project investigating how increasingly potent *fin-de-siècle* notions of feminism, nationalism and imperialism affected representations of femininities in the print culture of Australia, Britain and Ireland amid newly emerging nationalisms and shifting understandings of imperialism, colonialism and national identity. Dr Crozier-De Rosa joined ADRI in February 2011.

### **Dr Samuel Koehne, Alfred Deakin Postdoctoral Fellow**

Dr Samuel Koehne is an Alfred Deakin Postdoctoral Research Fellow, working within ADRI on a project examining the official National Socialist position on religion from 1919-1933. Samuel has completed two postgraduate degrees (MA, PhD) at the University of Melbourne, and has previously published a number of articles and book chapters dealing with questions of nationalism and the interrelations between political ideology and religious identity (especially within the context of internment in Australia during WWII) as well as editing the book *Terror, War, Tradition: Studies in European History*. His project at ADRI is a systematic consideration of the Nazi Party from its foundation to 1933, and seeks to move beyond the majority of work in this historical field, which considers the 'Church Struggle' after 1933, to understanding how the Nazis presented their belief system (and the belief systems of others) as they rose to power. Dr Koehne joined ADRI in February 2011.



**Dr Sasi Iamsiraroj, Postdoctoral Research Fellow**

Dr Sasi Iamsiraroj is an economist with research focuses on international development, international trade, foreign direct investment, economic growth, and meta-analysis. She has previously taught in a wide range of economics units, such as macroeconomics, microeconomics, international trade, and econometrics. After obtaining her PhD in economics from Deakin University in 2009, she continued her role as a research assistant participating in several research projects across areas such as the effects of human capital on growth, the effects of inequality on growth, experimenting with affirmative action, CEO pay – performance analysis, and welfare state in Western Europe. She is currently working on a research project with Professor McGillivray “Development Effectiveness Issues in the Pacific”. The research looks at the extent to which 22 of the world’s richest countries support development in the Pacific Islands region through their efforts with respect to aid, trade, migration, private investment, security, technology, and environmental sustainability. It will develop an index that will rank these countries on the basis of these efforts. Dr Iamsiraroj joined ADRI in April 2011.

**Dr Quentin Farmar-Bowers, Research Fellow, 0.5**

Dr Quentin Farmar-Bowers joined Deakin University in January 2011 as a joint appointment between the Alfred Deakin Research Institute (0.5) and the School of Life and Environmental Sciences (0.5) working on the project ‘Policies and governance for integrated landscape management in a changing environment’. The project is funded by the Victorian Centre for Climate Change Adaptation Research (VCCCAR). Quentin is also editing a book Food security in Australia jointly with Dr Jo Millar and Dr Vaughan Higgins both at Charles Sturt University. The book is to be published by Springer.

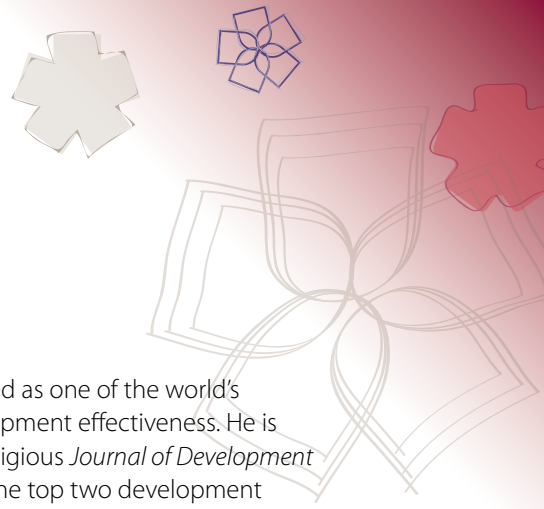
**Dr Tony Joel, Research Fellow, 0.4**

Dr Tony Joel is a historian whose main research interests are contemporary German history and the politics of war memory and commemoration. A Deakin employee for several years, Dr Joel has been involved with ADRI since its inception. His recent research has employed the WWII firebombing of Dresden as a case study for engaging in the heated ongoing international debate about the appropriateness or otherwise of Germans publicly representing and remembering themselves as war victims. He has contributed a chapter to the forthcoming edited collection *The Heritage of War* (Routledge UK, in press). Titled “Reconstruction over Ruins: rebuilding Dresden’s Frauenkirche,” it examines the popular but controversial decision in the 1990s to reconstruct the city’s landmark church destroyed by bombing at the expense of its ruins that had manifested into arguably Germany’s foremost antiwar site of memory. Dr Joel is currently developing a new project exploring how German politicians come to terms with the Nazi past when invoking history in public speeches and parliamentary debate.

**Adjunct Professors**

**Professor Peter Loney**

Professor Loney was the member for Lara in the Victorian Legislative Assembly and also served as the assembly’s deputy speaker. He began his political career in 1992 as a *shadow minister* before serving on the Victorian Parliament’s Public Accounts and Estimates Committee in 1997-2003. He was Chair of the Committee from 1999-2003 and Chair of the Australasian Council of Work Accounts Committees from 2001-2003. He was also the Chair of La Trobe University’s Public Sector Governance and Accountability Research Centre Advisory Council. Peter brings this program to ADRI, in revised form, as Parliamentary Leadership and Governance, a public sector accountability program sponsored by AusAID and international partners, bringing to Australia parliamentary officials from developing countries.



### Professor Oliver Morrissey

Professor Morrissey is widely regarded as one of the world's leading researchers in the area of development studies (also known as international development). He is co-editor of the very prestigious *Journal of Development Studies*, which is rated in the top two development studies journals. He is a prolific author, with more than 130 refereed publications. Professor Morrissey is a member of the editorial boards of *Development Policy Review* and the *Journal of African Economies*, and was a long standing editorial board member of the *Journal of International Development*. As an Honorary Professor at Deakin University, Professor Morrissey will work with Deakin staff on funding and publication submissions as co-applicant and author, respectively and alert people in the United Kingdom, Ireland and continental Europe to Deakin research.

### Dr Thomas Webster

Dr Webster is Papua New Guinea's leading public intellectual. He has a high profile in the media, and is very influential in policy circles. He is Director of PNG's leading think tank, the National Research Institute (NRI). The NRI conducts policy analysis and research into political, legal, education, social, environmental and population issues to influence public policy. The Institute also analyses data and carries out research on issues of national importance and briefs a select number of parliamentary committees of the Government of PNG. The NRI is an independent statutory authority. It was established by an Act of Parliament in 1988. The Institute has a workforce of 62 people. Currently there are 20 research staff, 6 cadet researchers, four ASF advisers, and 32 support staff. The NRI has signed a memorandum of understanding (MOU) with ADRI for collaboration in research projects of mutual interest.

Dr Webster is actively engaged with ADRI's research relating to PNG and the South Pacific, and is assisting to extend research and policy advocacy work in PNG and the Pacific.

### Dr Howard White

Dr White is widely regarded as one of the world's leading experts on development effectiveness. He is co-editor of the very prestigious *Journal of Development Studies*, which is rated in the top two development studies journals, and managing editor of the *Journal of Development Effectiveness*. Dr White is Executive Director of 3ie, the world's leading impact evaluation agency working in the field of international development. He was previously Senior Evaluation Officer at the Independent Evaluation Group of the World Bank and a Fellow at the Institute of Development Studies, University of Sussex. Dr White has more than 50 refereed academic publications in some of the world's leading international development journals. As an Adjunct Professor at Deakin University, Dr White will help strengthen research in international development and related areas, by providing advice on strategies to increase research funding and publication success and on emerging trends in development policy and industry needs world-wide. He will also assist Deakin staff in gaining access to very high level and influential international networks.



## Notable achievements 2010

In 2010 the Alfred Deakin Research Institute was successful in attracting research funding and disseminating the results of its activities and research through publications. It was also successful in terms of co-ordinating and sponsoring a range of seminars, conferences, workshops and public lectures. A brief overview of the most notable of these is presented below; further details are provided under appropriate headings later in this report.

### Research funding

During 2010 the Alfred Deakin Research Institute was successful in attracting substantial amounts of research funding from a variety of sources, including the Australian Research Council (National Competitive Grants). These funds supported projects undertaken in 2010, and several that continue through 2011 and 2012. Highlights include:

#### ARC funding

Professor David Lowe and Associate Professor Tina Murphy commenced two new ARC Discovery Grant funded projects. David's project 'Australian politicians and the uses of history: from Federation to the present' receives \$150,000 over three years in Australian Research Council funding.

Tina's project 'Understanding police and ethnic group interactions: Testing an integrated theoretical Model' receives \$330,000 over three years in Australian Research Council funding. This project is based at the University of Queensland.

#### Papua New Guinea Sustainable Development Program

In January, Senior Research Fellow, Dr Jonathan Ritchie, commenced writing a biography of the Papua New Guinean independence leader, the late Sir Ebia Olewale as funded by the PNG Sustainable Development Program. \$180,000 in funding will be received over two years.

#### G21 Geelong Regional Alliance and the formation of a Regional Research and Information Centre

The Geelong Regional Alliance group commissioned research for two projects: comparative change in small towns in the Greater Geelong Region; and the identification of trends and needs in early years education in the region. These projects total \$80,000 in funding and add momentum to the formation of a Regional Research and Information Centre, led by Professor David Lowe. The small towns project supports the first year of a three-year PhD scholarship (in Anthropology).

#### Australia India Institute

In December, Professor David Lowe convened a workshop jointly with the University of Delhi on the subject of cultural diplomacy and Australian-Indian relations. In the wake of the workshop, the Australia India Institute awarded David a research grant of \$20,000 to convene a more substantial conference on public diplomacy and Australian-Indian relations, also to be held in New Delhi, in April 2011.

#### Victorian Centre for Climate Change Adaptation Research

Professor Andy Bennett from Deakin's School of Life and Environmental Sciences, Professor David Lowe, and Assoc Professor Kevin O'Toole received \$215,000 to research impedances to integrated landscape management in Victoria. The funding is used primarily to support the recently appointed Research Fellow, Dr Quentin Farnar-Bowers, who is 0.5 with ADRI.

#### National Centre for Excellence in Desalination

Associate Professor Tina Murphy, Associate Professor Kevin O'Toole and Dr Tanya King secured agreement, in partnership with researchers at Murdoch and Victoria Universities, with the National Centre for Excellence in Desalination (NCED) for \$377,465 funding over two years to examine social attitudes to Water Desalination. Approximately \$150,000 of this funding comes to Deakin.

### Partnerships

During 2010 ADRI signed agreements that facilitated, and will facilitate further research opportunities consistent with ADRI's mission and focus. These include:

#### MOU signed with National Research Institute Papua New Guinea

The Alfred Deakin Research Institute signed a memorandum of understanding with Papua New Guinea's National Research Institute on 4 November at the Geelong Waterfront Campus. The signing was attended by NRI Director, Dr Thomas Webster and witnessed by the Hon. Richard Marles MP, local member for Corio and the Parliamentary Secretary for Pacific Island Affairs.



DR THOMAS WEBSTER AND PROFESSOR DAVID LOWE SIGNING THE MOU BETWEEN THE NATIONAL RESEARCH INSTITUTE, PAPUA NEW GUINEA AND THE ALFRED DEAKIN RESEARCH INSTITUTE

### Parliamentary Leadership and Governance Group

Towards the end of 2010, ADRI accepted the transfer from La Trobe University of the Annual Summer Residency Program for Public Accounts Committees, sponsored by AusAID and other groups. The program is being placed under a newly formed group within ADRI focused on Parliamentary Leadership and Governance, led by Professor Loney, Professor Mark McGillivray and Dr William Stent.

## Public engagement

Throughout 2010 ADRI organised and hosted (sometimes in collaboration with other organisations) an engaging series of seminars, lectures and other activities. These activities served to raise issues and provide commentary on significant local, state, national and international issues, often in spaces more accessible to the various communities that the University serves. They included:

### Fusion lecture

The Alfred Deakin Research Institute held the first lecture of the Fusion Lectures at the State Library of Victoria on Thursday 25 November. The inaugural lecture was presented by Professor Paul Collier, an eminent Economist and author of *The Bottom Billion*, on his most recent book *The Plundered Planet*, an incisive exploration of the nexus between addressing poverty and ensuring sustainability in the management of resources.

### Launch of the United Nations Human Development Report 2009

On 14 April ADRI hosted the Australian launch of the United Nations Development Program Human Development Report 2009. Special guest speakers included The Hon. Senator Bob McMullan, Parliamentary Secretary for International Development Assistance and Jeni Klugman, Director of the UNDP

Human Development Report. The title of the 2009 Report was *Overcoming Barriers: Human Mobility and Development*, and the report's launch was followed by a workshop in Melbourne, hosted by ADRI, attended by academics, practitioners, and advisers, on the theme of the 2010 report, a 20th anniversary reflective report, *The Wealth of Nations: Pathways to Human Development*. ADRI also sponsored a Canberra-based event associated with the 2009 and 2010 reports.

### Australia through the eyes of others

Prompted partly by the lack of reference to the outside world in the 2010 federal election campaign, and also by the need for public speaking that was ostentatiously in public spaces in the University (ie, where students eat their lunches) this series of seminars, held in August and September, examined how Australia was viewed/known from the perspective of four different countries: Iran, Japan, India and Indonesia. It featured nationals from these countries reflecting on their impressions of Australia both from the outside, and upon arrival and closer observation.



PROFESSOR KC SURI OF HYDERABAD UNIVERSITY GIVING A TALK 'ELECTORAL PROCESS IN AUSTRALIA: A VIEW FROM A VISITING INDIAN'

### Public lecture on Sustainability

On 25 October, ADRI sponsored a well-attended public lecture on *Issues to Consider in Regional Approaches to Sustainability* by Emeritus Professor Ian Lowe AO, Chair of the Australian Conservation Foundation and well-known author and advocate on environmental issues and sustainability.



# Research

## Research leadership

One of the objectives of ADRI is to support the continued development of Deakin University's research profile and performance through leadership and mentoring as well as through research training of higher degree by research students. During 2010 core ADRI staff and members were involved in the supervision of six higher degree by research (HDR) students and a number of Honours students for the Faculty of Arts and Education. David Lowe served on the University Research and Research Training Committee, the Faculty of Arts Research and Research Training Committee and led the History Discipline's trial submission for ERA. He and Kristina Murphy both took part in the University's Mentoring Program, 'Developing Research Leaders', as mentor and mentee, respectively.

During 2010 ADRI also hosted several workshops for Honours and HDR students enrolled in the Faculty of Arts and Education. Two full-day workshops were held in October and November 2010 for the purposes of providing Honours and early HDR candidates the opportunity to discuss their research projects with staff and other students in the Faculty. The workshops were also designed to provide constructive feedback on research projects and encourage prospective students to continue on higher degree by research pathways. One high-achieving History internship student (third level student) was located with ADRI for her internship experience; and David Lowe continued to oversee Geelong and off-campus internship students in History.

## Research programs

The Alfred Deakin Research Institute's research agenda for 2010 was primarily focused on three broad research themes:

- » Leadership
- » Development
- » Governance.

The following use of these headings does not always capture the manner in which some projects straddle two themes. In particular, the first listed, on Regional Research, addresses all three.

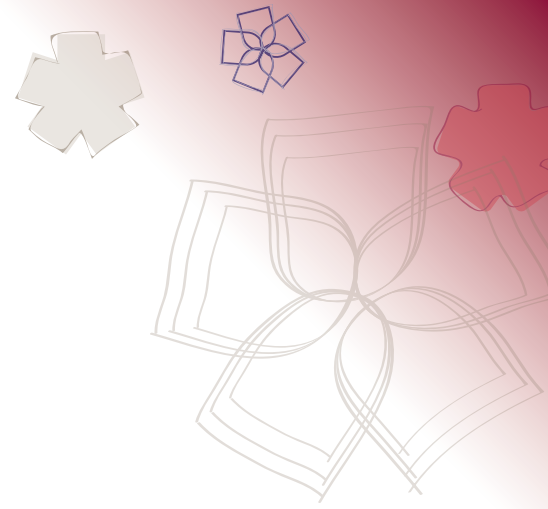
### **Regional Communities and Development/Regional Research and Information Centre**

During 2010, Professor David Lowe continued to gather support for the establishment of a Regional Research and Information Centre that will provide synthesis and interpretation from high quality data analyses around the core concepts of prosperity, sustainability and liveability in regional Victoria. The concept for the Centre has developed to address identified needs for:

- » evidence based research relating to recurring questions about growth, sustainability, social inclusion and community development
- » a repository of state-wide research reports and findings that can be easily accessed
- » better use of government resources and a stronger capacity to integrate regional and sub-regional plans.

Professor Lowe secured the support of G21, Regional Development Victoria, the department of Human Services, the University of Ballarat, Latrobe University at Bendigo, Monash University's Gippsland Campus and the Gordon TAFE for the proposal to establish a Regional Research and Information Centre. In October, the Minister for Regional and Rural Development announced a grant of \$15,000 to contribute to the development of a business plan for the Centre. This funding was matched by the Alfred Deakin Research Institute and G21, and in November work commenced on the preparation of a business plan for the Centre. Professor Lowe secured further support for the establishment and development of the Centre from Deakin University's strategic initiative funding and two part time appointments (Project Manager, and Senior Research Fellow) were made.

In its infancy, the Centre received support and seed funding from G21 and undertook two research projects – a report on Children 0-8 years in the G21 Region, and a study of small town communities. Both these reports will be published in 2011 by G21.



## Leadership

### Cultural Diplomacy

In December 2010 Professor David Lowe convened a workshop jointly with the University of Delhi on the subject of cultural diplomacy and Australian-Indian relations. The one-day workshop, held in New Delhi, featured contributions from academics from Deakin University, University of Hyderabad, University of Delhi, and Jawaharlal Nehru University, from NGOs, and also from the Australian High Commission, New Delhi. In the wake of the workshop, the Australia India Institute awarded Professor Lowe a research grant of \$20,000 to convene a bigger conference on public diplomacy and Australian-Indian relations, also to be held in New Delhi, in April 2011. The two-day conference, convened jointly with the University of Delhi, features a broader range of academic, journalist, NGO and practitioner contributions, and strong support from the Australian High Commission in New Delhi and the Indian Ministry of External Affairs.

### The decolonisation of Melanesia

Dr Christopher Waters, Dr Helen Gardner and Dr Jonathan Ritchie are undertaking a study of various dimensions of the decolonisation of Melanesia for the era from the 1950s through to the early 1980s.

### Australia and the Origins of the Second World War

Dr Chris Waters is working on a study of Australian government policy and actions during the appeasement era in the late 1930s. The project has a focus on the ideas and attitudes of the key Australian figures, including Robert Menzies and Stanley Bruce, and will form the subject of a book contracted with IB Taurus.

### The culture of war: private life and sentiment in Australia 1914-18

The social and political outlines of Australia's First World War are clear, yet the emotional world, or 'culture of war', in which Australians lived the war is only partially appreciated. Dr Bart Ziino's project examines the lived experience and agency of civilians in making war between 1914 and 1918. Engaging with current international debates about the cultural history of the First World War, it will investigate the extent to which ordinary Australians' everyday attitudes, feelings and activities made and sustained the war. Redressing the privileging of soldiers' voices in Australian war historiography, it provides an innovative reconceptualisation of the Australian experience of war.

### Australian heritage abroad: managing Australia's extraterritorial war heritage

Dr Bart Ziino worked on this project with Professor William Logan, Professor Joan Beaumont (ANU) and Associate Professor Andrea Witcomb, investigating the problems of managing and interpreting significant heritage sites in Australia's experience of war located in foreign sovereign territory. This focus on extraterritorial concerns moves beyond existing understandings of the contexts in which heritage is contested, exposing the greater complexities of managing national heritage in an international context. It will produce strategies for advancing heritage practice, policies and theory by encouraging understanding and dialogue between stakeholders of different historical and cultural backgrounds. In doing this the project recasts nationalist understandings of heritage and provides new frames for promoting dialogue at places of profound emotional significance.

### Life stories and parliaments in Melanesia

Professor David Lowe is extending his focus on parliamentarians and the uses of history to Melanesian parliaments, and particularly the parliament of Papua New Guinea. He is researching the constructions of life stories from within parliament in nationalist and post-independence settings.



## Development

### **Human well-being: concept and measurement**

Professor Mark McGillivray is undertaking a project that looks at ways of conceptualising and measuring achieved well-being in developed and developing countries. It adopts a multidimensional well-being perspective and is specifically concerned with well-being comparisons within and between countries, including Papua New Guinea.

### **Supporting pacific development**

Professor Mark McGillivray is undertaking a project that looks at donor efforts to promote development in the Pacific Islands through aid, trade, foreign investment, labour mobility, technology, security and environment sustainability. It aims to produce a donor league table, ranking donor countries in terms of their support for development in the Pacific.

### **Evaluation project**

The Government of Sweden has decided to wind up their aid programs in Sri Lanka, Laos and Vietnam to enable them to concentrate development cooperation in fewer countries and regions. The Swedish International Development Cooperation Agency (Sida) has commissioned an evaluation of long-term development cooperation in the fore-mentioned three countries. Professor Mark McGillivray's review will analyse the key aspects of Swedish support over time, and provide salient lessons learned which can inform ongoing donor activities in Sri Lanka, Laos and Vietnam, as well as inform Sida's ongoing programs in other countries.

## Governance

### **Integrated land management**

Dr Quentin Farmar-Bowers is working on the project 'Policies and governance for integrated landscape management in a changing environment'. The project is funded by the Victorian Centre for Climate Change Adaptation Research (VCCCAR).

### **Managing compliance with procedural justice: The role of motivational postures, legitimacy and emotion – Australian Research Council Discovery Grant (DP0987792).**

2010 saw Associate Professor Tina Murphy continue her research on her ARC Discovery grant. The project aims to critically evaluate procedural justice theory across several different regulatory contexts: a) taxation, b) social security, c) policing, and d) environment, in order to establish an empirically substantiated and practically useful theory of regulatory defiance that can explain the underlying reasons for why it occurs, when

it is most likely to occur, and more importantly how authorities can best prevent or manage it. Specifically, the project attempts to clarify the social-psychological processes that determine whether and when people are open to procedural justice, and the conditions that need to be established for procedural justice to be accepted as a legitimate approach to regulation

### **Understanding police and ethnic group interactions: testing an integrated theoretical model – Australian Research Council Discovery Project (dp1093960)**

Associate Professor Tina Murphy is partner in this project, led from the University of Queensland. The main objective of this project is to critically evaluate theories of procedural justice and legitimacy in the context of the policing of ethnic communities in Australia. Of particular interest will be how a *social distancing framework* can contribute to our understanding of interactions between police and ethnic groups. The project has four specific aims:

1. To examine levels of legitimacy and trust towards police among selected ethnic communities in Australia and to examine the impact that procedural justice has in shaping these perceptions;
2. To identify the conditions under which procedural justice-based policing may be more or less effective in shaping the willingness of minority groups to cooperate with police.
3. To apply and empirically test a social distancing framework which aims to integrate theories from sociology and psychology to more fully explain potential responses to procedural justice or injustice;
4. To compare and contrast findings obtained with data collected from a sample of Anglo-Australians (ie. non-minority group members).

### **Public perception of, and response to, desalination in Australia**

In late 2010, Dr Tanya King, Associate Professor Kristina Murphy and Associate Professor Kevin O'Toole were successful in their bid to the ARC's Centre for Excellence in Desalination to undertake a research project examining what people in Australia think of desalination as a mechanism for producing drinking water. It is a collaborative project, led by Deakin University, together with Victoria University and Murdoch University. The project will produce advice on widespread public attitudes to the deployment of desalination in Australia, as well as providing a detailed case study of information exchange between desalination experts and lay publics, in two focus regions. The project will survey national attitudes to

desalination plant implementation and outcomes in a range of rural and metropolitan regions where plants are operational, under construction, or absent. The national survey will identify general attitudes to desalination as a response to climate change, as well as common understandings of the desalination process itself, including anticipated or perceived outcomes of desalination. This information will identify different gaps in knowledge which require addressing via education and communication campaigns. The project will also research the views of water professionals about the role of lay publics in desalination policy and implementation. These data (community views and water professionals' views) will provide an evidence base for effective, dialogical communication strategies. 2010 saw the initial development of the project, with the national survey to be undertaken in early 2011.

## ADRI Working Paper Series

The ADRI Working Paper Series was established in 2010 and is designed to bring the research of the Institute to as wide an audience as possible and to promote discussion among researchers, academics and practitioners both nationally and internationally on issues of importance.

The working papers are selected with three criteria in mind:

1. to share knowledge, experience and preliminary findings from research projects;
2. to provide an outlet for policy focused research and discussion papers; and
3. to give ready access to previews of papers destined for publication in academic journals, edited collections or research monographs.

### **Founding Editor and Coordinator:**

Kristina Murphy

### **Editorial Team:**

David Lowe

Mark McGillivray

Jonathan Ritchie

**Working Paper No. 1** The Colombo Plan and 'soft' regionalism in the Asia-Pacific: Australian and New Zealand cultural diplomacy in the 1950s and 1960s – *David Lowe*

**Working Paper No. 2** Policing ethnic minority groups with procedural justice: an empirical study – *Kristina Murphy and Adrian Cherney (School of Social Sciences, University of Queensland)*

**Working Paper No. 3** 'We need one district government to be set up to replace other district governments': The beginnings of provincial government in Papua New Guinea – *Jonathan Ritchie*

**Working Paper No. 4** 'The Australian Tax Survey of Tax Scheme Investors': Survey methodology and preliminary findings for the second stage follow-up survey – *Bevan Murphy and Kristina Murphy*

**Working Paper No. 5** Scaling-up foreign aid: Will the 'Big Push' work? – *Mark McGillivray and Simon Feeny (School of Economics, Finance and Marketing, RMIT University)*

**Working Paper No. 6** Policing youth: Can procedural justice nurture youth cooperation with police? – *Kristina Murphy and Alana Gaylor (School of History, Heritage and Society, Deakin University)*

**Working Paper No. 7** The Anglican Church and the Vanuatu independence movement: solidarity and ambiguity – *Terry M Brown (Anglican Church of Melanesia)*

**Working Paper No. 8** Decolonising the Solomon Islands: British theory and Melanesian practice – *Clive Moore (University of Queensland)*

**Working Paper No. 9** Re-framing Polynesian journalism-from Tusitalato liquid modernity – *Mark Hayes (School of Journalism and Communication, University of Queensland)*

**Working Paper No. 10** 'Taking over, of what and from whom? Women and Independence, the PNG Experience' – *Anne Dickson-Waiko (University of Papua New Guinea)*

**Working Paper No. 11** Risky business: Why the Commonwealth needs to take over gambling regulation. – *Linda Hancock and Michael O'Neil (South Australia Centre for Economic Studies)*



**Working Paper No. 12** 'The Fijian Qoliqoli and urban squatting in Fiji: Righting an historical wrong?' *Jenny Bryant-Tokalau (University of Otago, New Zealand)*

**Working Paper No. 13** The Australian tax system survey of tax scheme investors': Methodology and preliminary findings for the third follow-up survey – *Bevan Murphy, Kristina Murphy and Malcolm Mearns (Datacol Research)*

**Working Paper No. 14** How 'responsible' is Crown Casino?: What Crown employees say – *Linda Hancock*

**Working Paper No. 15** Understanding minority group willingness to cooperate with police: Taking another look at legitimacy research – *Kristina Murphy and Adrian Cherney (School of Social Sciences, University of Queensland)*

**Working Paper No. 16** 'The 2007 public safety and security in Australia survey': survey methodology and preliminary findings – *Kristina Murphy and Adrian Cherney (School of Social Sciences, University of Queensland) and Malcolm Means*

**Working Paper No. 17** 'The 2009 crime, safety and policing in Australia survey': survey methodology and preliminary findings – *Kristina Murphy and Adrian Cherney (School of Social Sciences, University of Queensland) and Malcolm Mearns (Datacol Research)*





# Public engagement and external relationships

ADRI organised and hosted a program of events and activities, and joined with others in co-sponsoring other events.

## Public events 2010

The ADRI-hosted and ADRI-sponsored events of 2010 are outlined below.

### Launch of the Australian Policy and History website, 26 March

Professor David Lowe, Director of the Alfred Deakin Research Institute and Associate Professor Melanie Oppenheimer from the University of New England launched the Australian Policy and History website on 26 March 2010. The Network is a collaborative project of the Alfred Deakin Research Institute and links historians with policy-makers, the media and the Australian public to inform public debate and promote better public policy-making through an understanding of history. The website provides a means by which historians engage with the media and policy-makers on topical issues that benefit from historical perspectives. The launch was the subject of a Radio National Future Tense program, aired on 8 April 2010. The Network continues to attract media attention and contributions from historians.



PROFESSOR DAVID LOWE AND ASSOCIATE PROFESSOR MELANIE OPPENHEIMER BEING INTERVIEWED FOR A RADIO NATIONAL FUTURE TENSE PROGRAM REGARDING THE LAUNCH OF THE AUSTRALIAN AND POLICY AND HISTORY NETWORK

### Australian launch of the United Nations Development Program Human Development Report 2009, 14 April

The Alfred Deakin Research Institute proudly hosted the Australian launch of the United Nations Development Program's Human Development Report 2009 by Dr Jeni Klugman, Director Human Development Report Office, New York City at the Telstra Conference Centre, Melbourne. Special guest speakers included the Hon. Bob McMullan, Parliamentary Secretary for International Development Assistance and Professor Sally Walker, Vice-Chancellor, Deakin University.



DR JENI KLUGMAN, DIRECTOR HUMAN DEVELOPMENT REPORT OFFICE ADDRESSES GUESTS AT THE LAUNCH OF THE UNDP HUMAN DEVELOPMENT REPORT 2009

### Book launch – Australian Between Empires: The Life of Percy Spender, 31 May

Greg Sheridan, Foreign Editor, The Australian, launched the new book by Alfred Deakin Research Institute Director, Professor David Lowe 'Australian Between Empires: The Life of Percy Spender', at the Geelong Waterfront Campus.



MR GREG SHERIDAN AND PROFESSOR DAVID LOWE AT THE LAUNCH OF THE BOOK 'AUSTRALIAN BETWEEN EMPIRES: THE LIFE OF PERCY SPENDER'

### Seminar: 'A participatory approach to sustainability assessment development: A case study of South West Victoria', 11 August

Dr Michelle Graymore, Research Fellow, School of Life and Environmental Sciences presented the seminar based on her research on the development and evaluation of tools for regional sustainability assessment both for South West Victoria and for South East Queensland, including the integration of assessment tools into Geographical Information Systems to allow mapping of the sustainability assessment for reporting and communication results.



**Australia through the eyes of others**

The Alfred Deakin Research Institute hosted a lunchtime series held in public spaces on the two Geelong campuses that explored the question *How do others view Australia?* from different national perspectives.

**The Iranian view** – 31 August. By Marzieh Asgari

**The Indian view** – 7 September. Distinguished political scientist Professor KC Suri of Hyderabad University gave a talk entitled ‘Electoral process in Australia: A view from a visiting Indian’.

**The Japanese view** – 14 September. Dr Yoko Harada, Alfred Deakin Postdoctoral Research Fellow gave a talk from the Japanese perspective ‘Australia in the Japanese consciousness: from the movie AUSTRALIA to whaling’.

**The Indonesian view** – 21 September. Dr Ismet Fanany, lecturer in Indonesian language and culture spoke about the intense relationship between Australia and Indonesia and how Indonesian perceptions of Australia have been changing.

**Seminar: ‘Hope and Religion’, 2 September**

Professor Stan Van Hooff presented the seminar ‘Hope and Religion’, introducing the notion of “metaphysical hope” as an expression of eight features of hope and argued that faith in God is not based upon rational argument or evidence, that it is produced by metaphysical hope. The seminar delivered at the Geelong Waurin Ponds Campus, was jointly hosted by the Alfred Deakin Research Institute, School of International and Political Studies and the Deakin Philosophical Society.

**Seminar: ‘Newcastle UK: How an industrial city is pursuing sustainability’, 8 September**

Peter Dorling, Executive Director, Committee for Geelong and Mark Sanders, Managing Director, Third Ecology presented the seminar as part of the Geelong Futures Group Seminar Series at the Geelong Waterfront Campus, hosted by the Alfred Deakin Research Institute.

The Geelong Futures Group’s series of public events held at Deakin University in 2010 focused on sustainability in the Geelong region. The Geelong Futures Group brings together the Alfred Deakin Research Institute, G21 Regional Alliance, Committee for Geelong and the City of Greater Geelong to encourage forward-looking, innovative thinking and debate on issues of regional sustainability.

**Conference: Australian Anthropological Society, 23-24 September**

The conference held at the Geelong Waterfront Campus was jointly sponsored by the Alfred Deakin Research Institute and the School of History, Heritage and Society. The conference keynote speaker was Professor André Iteanu (CNRS, Paris) whose address ‘The Disenchantment of Society’ will be published by The Australian Journal of Anthropology.

**Conference: New pathways for Pro Cycling, Building the Future Common Wealth of Cycling, 27-28 September**

The conference was held to bring together cyclists, administrators, academics, scientists, fans and others interested in the future direction of professional cycling to discuss the problems the sport faces as it undergoes changes in the process of its globalisation. The conference held at the Geelong Performing Arts Centre was jointly sponsored by the Alfred Deakin Research Institute, the School of Law and the School of History, Heritage and Society and was held at a time to coincide with World Cycling Championships held in Geelong.

**Geelong Futures Group Seminar, 13 October**

Rod Thomas and Tonya Higgins presented the seminar as part of the Geelong Futures Group Seminar Series at the City for Greater Geelong Council Chambers, hosted by the Alfred Deakin Research Institute.

**Seminar: ‘Issues to consider in regional approaches to sustainability’, 25 October**

Professor Ian Lowe presented the seminar as part of the Geelong Futures Group Seminar Series at the Geelong Waterfront Campus during DeakinWeek, hosted by the Alfred Deakin Research Institute.



PROFESSOR DAVID LOWE (DIRECTOR, ALFRED DEAKIN RESEARCH INSTITUTE), EMERITUS PROFESSOR IAN LOWE AO, MS ANNE SOMMERVILLE (DIRECTOR, HEALTH & WELLBEING, G21) AND MR JOHN BOURKE (G21 PROJECT CHAMPION)



**Forum: 'Yes we're still a monarchy but it is not my fault', 9 November**

The Alfred Deakin Research Institute hosted the annual Deakin Research IT'S NOT MY FAULT forum titled 'Yes we're still a monarchy but it is not my fault' and looked at the issue that goes right back to the early days of Federation and remains unresolved: should Australia do away with having a foreigner as its head of state? The forum was sponsored by the ABC, and broadcast on Radio National's 'Life Matters' (26 January 2011), and featured three researchers.

Professor Marian Simms provided the historical context of failed republican pushes since Federation. Greg Barns, a former adviser to senior Liberal Party figures like Nick Greiner and John Fahey, and the man who succeeded Malcolm Turnbull as chairman of the Australian Republican Movement, spoke about his experiences during the 1999 Australian Republic referendum – and his passions for a future republic which are still strong. Professor Damien Kingsbury took a Jacobean approach to the topic and given that it was during the reign of James the First that Guy Fawkes tried to blow up Parliament House in London, he provided plenty of fireworks.

The forum was chaired by Warwick Hadfield and held in the atrium space of the Alfred Deakin Research Institute.



GREG BARNs, PROFESSOR DAMIEN KINGSBURY AND PROFESSOR MARIAN SIMMS DURING THE 'YES WE'RE STILL A MONARCHY BUT ITS NOT MY FAULT FORUM'.

**Conference: 'National Rural/Regional Law and Justice', 19-21 November**

The inaugural National Rural/Regional Law and Justice Conference, opened by the Chief Justice of the High Court of Australia, The Honourable Justice Robert French, was held at Lady Bay Resort, Warrnambool and sponsored by the Alfred Deakin Research Institute.

The conference was attended by over 100 delegates representing approximately 50 organisations from all States and Territories with representation across federal, state and local government, industry, legal practitioners,

academics, Legal Aid, Community Legal Services, Indigenous, Youth, and other regional advocacy and support services.

The aim of the conference was to influence and shape the direction of policy and debate on the provision of justice system services to regional Australia. The conference highlighted initiatives currently being undertaken in rural and regional Australia and focused attention on the areas of greatest need now and in the future.

**Fusion Lecture: 'The Plundered Planet', 25 November**

The Alfred Deakin Research Institute held the first lecture of the Fusion Lecture Series at the State Library of Victoria. The inaugural lecture was presented by Professor Paul Collier, an eminent Economist and author of *The Bottom Billion*, on his most recent book *The Plundered Planet*. To have a researcher of his standing provide such a judicious insight into the way that we can better use natural resources was a great way to start the Fusion lectures.

The lectures are named in recognition of the intellectual and political legacy of Alfred Deakin, Australia's second Prime Minister and a leading figure in Australian Federation. Deakin led a 'fusion' government, comprised of groups that would soon afterwards become the first Australian Liberal Party, in 1909-10.

The Fusion lectures draw inspiration from Alfred Deakin in bringing different disciplines to bear in interpreting and responding to global and regional change. Future Fusion lectures, three more are planned for next year, will feature prominent thinkers on current public policy issues. It is also planned to publish the lectures in book form.



PROFESSOR PAUL COLLIER GIVING THE INAUGURAL FUSION LECTURE 'THE PLUNDERED PLANET'



**Workshop: 'Enriched relations: Cultural Diplomacy in Australian-Indian Relations-Past, Present and Prospective', 2 December**

The Alfred Deakin Research Institute, with the assistance of the Deakin India Office, hosted a workshop on cultural diplomacy and Australian-Indian relations, in New Delhi. The workshop featured Australian and Indian scholars and officials, including Australian Deputy High Commissioner in New Delhi, Dr Lachlan Strahan, and is the product of research undertaken by Professor David Lowe (workshop co-ordinator) and by Indian academic colleagues from universities including Jawaharlal Nehru University, Indira Gandhi National Open University, and the University of New Delhi.

A two day International Conference 'Public Diplomacy in theory and practice: culture, information and interpretation in Australian-Indian Relations' to be held in New Delhi in April 2011 has been planned following the success of the December workshop.

## Visitors

The Institute hosted a number of visitors from Australian and international universities and organisations.

### FEBRUARY

**James Arnott**, GMHBA

### MARCH

**Professor Ross Garnaut**, in his capacity as Board member of the Papua New Guinea Sustainable Development Program

**Associate Professor Melanie Oppenheimer**, University of New England, co-founder of the Australian Policy and History Network

**Antony Funnell**, ABC Radio National Future Tense program

### APRIL

State Members of Parliament, **David Koch** (Legislative Council) and **Denis Naphthine** (Legislative Assembly)

**Sucheta Priyabadani**, Endeavour Award Scholar, researching Indian women as professional and their role in strengthening Indian-Australian relations

### MAY

**Katrina Alford**, social and economic researcher

**Greg Sheridan**, Australian newspaper

### JUNE

**Professor Fazal Rizvi**, Education, University of Illinois

### JULY

**Professor Sareena Seifer**, Founding Executive Director of Community-Campus Partnerships for Health (CCPH) and Adjunct Professor at the University of Guelph in Ontario, Canada.

### AUGUST

**Dr Takayuki Nagano**, Dokkyo University, Tokyo

### OCTOBER

**Professor Ian Lowe**, President Australian Conservation Foundation

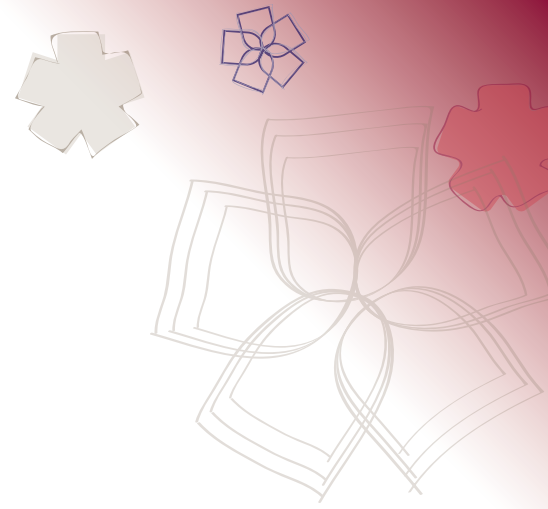
**Andrew Brookes**, Member of Deakin Foundation

### NOVEMBER

**Dr Thomas Webster**, Director, National Research Institute, Papua New Guinea

### DECEMBER

**Professor John Martin**, Chair, Sustainable Regional Communities, La Trobe University, Bendigo



# Financial statement

OPERATING & RESEARCH	2010 Actual
<b>Income</b>	
Deakin Internal Funding	1,358,520
Conference and Consultancy Income	46,781
<b>Subtotal Operating Income</b>	<b>1,405,301</b>
ARC Grants	78,094
Industry & Other Grants	118,330
Local Government Grants	88,320
<b>Subtotal Research Income</b>	<b>284,744</b>
<b>Total Income</b>	<b>1,690,044</b>
<b>Expenses</b>	
Employment Costs (Salaries)	847,829
Non Salary Costs	624,830
Building Works, cleaning, repairs and maintenance	1,537
Stationery & Printing Costs	21,877
Books – General Purchases	373
Equipment & Furniture	8,429
Motor Vehicle Expenses	12,751
Licenses & Registration Costs, Administration Fees	775
Computer Equipment, telephones & internet	19,708
Freight, Cartage & Courier Expenses	2095
Postgraduate Awards	6,468
Payments to other Universities - HERDC	10,000
Internal Grant Transfers	48,696
Marketing & Promotions	25,288
Consultants	496,543
Overseas Visitor Expenses	4,233
Conference Costs	14,477
Staff Development	1995
Staff Recruitment	17,090
Catering & Meals	7315
Travel - Domestic	33,124
Travel - Overseas	56,423
Miscellaneous and Other Expenses	10,756
<b>Total Expenses</b>	<b>1,472,659</b>
<b>Net Operating &amp; Research Surplus/Deficit</b>	<b>217,616</b>
<b>Carried Forward Surplus to 2011</b>	<b>125,616</b>
<b>Variance</b>	<b>(91,769 )</b>

The Alfred Deakin Research Institute operated on a surplus of \$217,385 in 2010. \$125,616 was carried forward to 2011 to undertake strategic research and activities.

In 2010 the Institute received \$1,358,520 in Internal Funding; Conference and Consultancy Income totalling \$46,781; \$78,094 in ARC funding; Industry and other grants totalling \$118,330; and \$88,320 in local government grants.

Research income generated by affiliate members is listed on the next page.



## Current funded projects, with affiliate members as investigators

**\$394,349 Clarke, M.,** Feeny, S., Wallace, H., Posso, A. et al *Economic Shocks: Reducing Vulnerability and Increasing Resilience in the Pacific* Australian Development Research Award, 2010-2013.

**\$350,000 Clarke, M.,** Feeny, S., Fry, T. and Rogers, M. *Scaling Up Aid and the Millennium Development Goals in the Pacific: Absorptive Capacity, Sustainability and Efficiency*, Australian Development Research Award, 2009-2012.

**\$153,000 Clarke, M.,** Leach, M., Feeny, S. and Wallace, H. *Understanding Attitudes to National Identity in Melanesia*, Australian Development Research Award, 2009-2010.

**\$153,000** Leach, M., **Clarke, M.,** Wallace, H. and Feeny, S. *Understanding Attitudes to National Identity in Melanesia*, Australian Agency for International Development, 2009 – 2010.

**\$221,000 Eckermann, E. and Clarke, M.** *Developing new and effective ways to evaluate intervention in maternal health services in illiterate and innumerate communities in southern Lao PDR: a case study*, Australian Agency for International Development, 2010-2012.

**\$22,240 Eckermann, E.** *Women and Health in the Western Pacific Region*, WHO, WPRO, 2010.

**\$104,000 Kingsbury, D.** and Leach, M. *After the crisis: Nation building challenges in East Timor*, Australian Research Council, 2009-2011.

**\$330,000 O'Toole, K.,** Wescott, G., Wallis, A., Miller, K., Keneley, M., Scarborough, H., Macgarvey, A. and Quinn, G. *Clearing the path for science imoact: identifying and overcoming the social and institutional barriers to effective and intergrated management of Australias's coastal in the face of future change*, CSIRO, 2010-2013.

**\$215,293** Bennett, A., Jones, R., Beilin, R., Buxton, M., Wallis, P., Ison, R., Farmer-Bowers, Q., Lowe, D. and **O'Toole, K.** *Understanding Policies and Governance for Integrated landscape Management in a Changing Environment*, Victorian Centre for Climate Change Adaptation Research, 2010-2012.

**\$50,000** Byrne, S., Wallis, A., Graymore, M. and **O'Toole, K.** *Integrated Regional Sustainability Program Indicators Guide – Victoria*, Department of Sustainability and Environment Victoria, 2010.

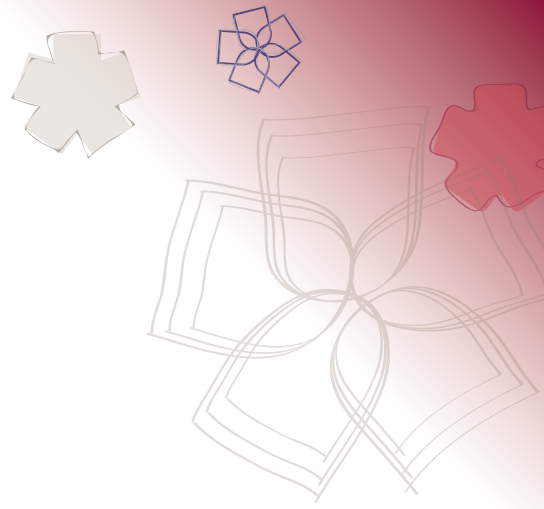
**\$230,000** Ierodiaconou, D., Wallis, A., **O'Toole, K.,** Scarborough, H. and Stagnitti, F. *Warrnambool-Corangamite Land Suitability Decision Framework: Southwest case study and partnerships*, Warrnambool City Council for the Department of Sustainability and Environment, 2009 – 2011.

**\$180,000 Walker, D.** *Australia's Asian Futures: A Cultural History, 1972 to the present*, Australian Research Council 2009- 2011.

**\$180,000** Mansouri, F., Kenny, S., and **Walker, D.,** *Local Governance, Multiculturalism and Active Citizenship: The Case of Arab-Muslim Diaspora in the West*, Australian Research Council, 2007-2010.

**\$180,000** Logan, WS., Beaumont, J., Witcomb, A. and **Ziino, B.** *Australian Heritage Abroad: Managing Australia's Extraterritorial War Heritage*, Australian Research Council, 2010-2012.

**\$235,944 Ziino, B.** *The culture of war: private life and sentiment in Australia 1914-1*, Australian Research Council, 2008-2011.



## ADRI and Deakin's Strategic Plan

The Alfred Deakin Research Institute sits alongside the Institute for Technology Research and Innovation and is associated with one of the 11 Strategic Research Centres that Deakin University has created, to recognise and promote Deakin's research strengths. The research environment created by these groupings stimulates research and research training, and assists Deakin in its strategic goal: to improve Deakin's research performance so that it is in the top third of the Australian higher education sector by building a critical mass of researchers who will develop a portfolio of high quality discovery, applied and commercial research.

With a foundation in the humanities and social sciences, the Alfred Deakin Research Institute has a mission to generate and promote research that will inform public debate and public policy. The Institute's research features cross-disciplinary and problem oriented approaches, based on collaborative relationships within Deakin University and with external partners, including government entities. The Alfred Deakin Research Institute promotes research that integrates knowledge generated from a broad range of disciplines in ways that address problems of local, national and international importance.

### Alfred Deakin Research Institute Advisory Board Members

Vice-Chancellor's nominee

Chair **Professor Peter Spearritt**

Deputy Vice-Chancellor (Research)



**Professor Lee Astheimer**

Deputy Vice-Chancellor (Research)  
Deakin University

Director, Alfred Deakin Research Institute



**Professor David Lowe**

Director, Alfred Deakin Research  
Institute, Deakin University

Dean, Faculty of Arts and Education



**Professor Jennifer Radbourne**

Dean, Faculty of Arts and Education  
Deakin University

## Advisory Board

The Alfred Deakin Research Institute Advisory Board was established by the Vice-Chancellor in 2010, to advise the Director of the Alfred Deakin Research Institute on the operations of the Institute, including matters of policy and strategic planning. The main function of the Advisory Board is to provide advice to the Director on the activities of the Institute and the pursuit of the Institute objectives.

External member



**Professor Peter Spearritt**

Professor of History, and Director,  
Centre for the Government  
of Queensland, University of  
Queensland

External member



**Dr Leena Srivastava**

Executive Director, The Energy  
Resources Institute (TERI)  
New Delhi, India

External member



**Mr Greg Sheridan**

Foreign Editor  
*The Australian* Newspaper

External member



**Ms Tricia Caswell**

CEO of Tricia Caswell + Associates:  
Sustainability Experts



## APPENDIX – Research outputs

Below are research outputs, listed by ADRI Core members, and ADRI Affiliate Members.

### CORE MEMBERS

#### LOWE, DAVID

##### BOOKS

**Lowe, D.** *Australian Between Empires: The Life of Percy Spender*, Pickering and Chatto Publishers, London, 2010.



##### BOOK CHAPTERS

**Lowe, D.** Cold war London: Harrison and White in C. Bridge, F. Bongiorno and D Lee (Eds), *The High Commissioners: Australia's representatives in the United Kingdom*, 1910-2010. Department of Foreign Affairs and Trade, Canberra, 2010.

**Lowe, D.** The Colombo Plan and 'Soft' Regionalism in the Asia-Pacific: Australian and New Zealand Cultural Diplomacy in the 1950s and 1960s in Frank, R. Haba, K and Momose, H (Eds), *The End of the Cold War and Regional Integration*, Aoyama Gakuin University, Tokyo, 2010.

##### REFEREED JOURNAL ARTICLES

McCooey, D. and **Lowe, D.** Autobiography in Australian Parliamentary First Speeches in *Biography*, vol. 33, no. 1, Winter 2010, pp.68-83, University of Hawaii Press, Honolulu, USA.

##### OTHER

**Lowe, D.** Politicians, History and Policy in *Dissent*, no.33, spring 2010, pp.16-19.

**Lowe, D.** The Colombo Plan and 'Soft' Regionalism in the Asia-Pacific: Australian and New Zealand Cultural Diplomacy in the 1950s and 1960s, *Alfred Deakin Research Institute Working Paper*, no. 1, Deakin University, Geelong, 2010.

##### REVIEW

**Lowe, D.** Anglo-Australian relations and the 'Turn to Europe', 1960-1972, by Andrea Benvenuti (Woodridge: Boydell P., for the Royal Historical Society, 2008; in *The English Historical Review*, volume CXXV, no.15, August 2010.

##### CONFERENCE PAPERS

**Lowe, D.** *The Australian Policy and History Network*, Australian Historical Association Conference, Perth, July 2010.

**Lowe, D.** *Whose History: Australia politicians and the story of independent Papua New Guinea*, Pacific at the

Crossroads - Pacific History Conference, Goroka, Papua New Guinea, September 2010.

##### INVITED/KEYNOTE ADDRESSES

**Lowe, D.** *Decolonisation in Asia and the Pacific*, Centre for Defence and Strategic Studies, Canberra, 11 March 2010.

**Lowe, D.** *Alfred Deakin and Australia's Defence*, Military History Society of Australia Conference, Melbourne, 3 April 2010.

**Lowe, D.** *Australia, the Colombo Plan and the early stirrings of cultural diplomacy*, Enriched Relations: Cultural Diplomacy in Australian-Indian Relations, past, present and prospective, New Delhi, 2 December 2010.

##### COMMENTARY

*Launch of the Australian Policy and History Network*, Radio National, Future Tense, 8 April 2010.

*The Life of Percy Spender*, Radio National Late Night Live, 8 April; Radio Australia, 3 June; ABC Radio Canberra, 1 July 2010.

*The Legacy of Alfred Deakin*, ABC Radio Canberra, 2 August; ABC radio 774, 3 August 2010

*History and the Election*, ABC Radio Canberra, 6 September 2010.

#### MCGILLIVRAY, MARK

##### EDITED BOOKS

Santos-Paulino, A., **McGillivray, M.** and Naude, W. (Eds) *Understanding Small Island Developing States: Fragility and External Shocks*, Routledge, Abingdon, 2010.

**McGillivray, M.**, Dutta, I. and Lawson, D. (Eds) *Health Inequality and Development*, Palgrave-Macmillan, London, 2010.

##### BOOK CHAPTERS

Santos-Paulino, A., **McGillivray, M.** and Naude, W. Vulnerability, Financial Flows and State Failure in Small Island Developing States in Santos-Paulino, A., McGillivray, M. and Naudé, W. (Eds), *Understanding Small Island Developing States: Fragility and External Shocks*, Routledge, Abingdon, 2010.

**McGillivray, M.** and Feeny, S. Aid and Growth in Small Island Developing States in Santos-Paulino, A., McGillivray, M. and Naudé, W. (Eds), *Understanding Small Island Developing States: Fragility and External Shocks*, Routledge, Abingdon, 2010.

**McGillivray, M.**, Dutta, I. and Lawson, D. "Health Inequality and Development: Achieving Better Health

in Developing Countries" in McGillivray, M. Dutta, I. and Lawson, D. (Eds), *Health Inequality and Development*, Palgrave-Macmillan, London, 2010.

**McGillivray, M.** Dutta, I. and Lawson, D. (Eds), "Global Inequality in Health: Disparities in Human Longevity among Countries" in McGillivray, M. Dutta, I. and Lawson, D.(Eds), *Health Inequality and Development*, Palgrave-Macmillan, London, 2010.

GUEST EDITOR OF JOURNAL SPECIAL ISSUE

Santos-Paulino,A., **McGillivray, M.** and Naudé, W. (Eds), *Small Island Developing States*, Special Issue of the *Journal of Development Studies*, vol. 46, no. 5, 2010.

REFEREED JOURNAL ARTICLES

Feeny, S. and **McGillivray, M.** "Aid and Public Sector Fiscal Behaviour in Failing States", *Economic Modelling*, vol. 27, 2010, pp.1006-1016.

**McGillivray, M.** Naude, W. and Santos-Paulino, A. "Vulnerability, Financial Flows and State Failure in Small Island Developing States", *Journal of Development Studies*, vol. 46, no. 5, 2010.

Feeny, S. and **McGillivray, M.** "Aid and Growth in Small Island Developing States", *Journal of Development Studies*, vol. 46, no. 5, 2010, pp. 897-917.

**McGillivray, M.** and Markova, N. "Global Inequality in Well-being Dimensions", *Journal of Development Studies*, vol. 46, no. 2, 2010, pp. 371-378.

CONFERENCE PAPERS

**McGillivray, M.** *Human Well-being and Human Security*, Human Security, Institute for Human Security, La Trobe University, June 2010.

**McGillivray, M.** *The Triple Crisis: Implications for Aid Policy and Research*, Triple Crisis Conference, World Institute for Development Economics Research, Helsinki, Finland, May 2010.

**McGillivray, M.** *A Sovereign Wealth Fund for Papua New Guinea: Institutional Arrangements and Absorptive Capacity Constraints*, PNG Department of Treasury - Bank of Papua New Guinea Conference on a PNG Sovereign Wealth Fund, Port Moresby, Papua New Guinea, May 2010.

**McGillivray, M.,** Guillaumont, P. and Wagner, L. *Performance, Vulnerability, Human Capital and the Allocation Aid Among Countries*, World Bank Annual Bank Conference on Development Economics (ABCDE), Stockholm, Sweden, June 2010.

APPOINTMENT

Research Associate, Oxford Poverty and Human Development Initiative, Department for International Development, University of Oxford.

## TINA MURPHY

BOOK CHAPTERS

**Murphy, K.** 'Reintegrative Shaming'. in B. Fisher & S. Lab (Eds.), *Sage Encyclopedia of Victimology and Crime Prevention*, Sage, U.K., 2010.

**Murphy, K.** 'Procedural justice and the regulation of tax compliance behaviour: The moderating role of personal norms'. In J. Alm, J. Martinez-Vasques, & B. Torgler (Eds), *Developing Alternative Frameworks for Explaining Tax Compliance*. London: Routledge, 2010.

OTHER

Murphy, B., **Murphy, K.** and Mearns, M. The Australian Tax System Survey of Tax Scheme Investors: Methodology and Preliminary Findings for the Third Follow-up Survey, *Alfred Deakin Research Institute Working Paper*, no 13, Deakin University, Geelong, 2010.

**Murphy, K.** and Gaylor, A. Policing Youth: Can procedural justice nurture youth cooperation with police, *Alfred Deakin Research Institute Working Paper*, no 6, Deakin University, Geelong, 2010.

**Murphy, K.** and Cherney, A. Policing ethnic minority groups with procedural justice: An empirical study, *Alfred Deakin Research Institute Working Paper*, no 13, Deakin University, Geelong, 2010.

Murphy, B. and **Murphy, K.** 'The Australian Survey of Tax Scheme Investors': Survey methodology and preliminary findings for the second stage follow-up survey, *Alfred Deakin Research Institute Working Paper*, no. 4, Deakin University, Geelong, 2010.

CONFERENCE PAPER

**Murphy, K.** *Policing with procedural justice: taking another look at legitimacy research*, 13<sup>th</sup> International Society for Justice Research Conference, Banff, Canada, 21 August 2010.

## RITCHIE, JONATHAN

CONFERENCE PAPERS

**Ritchie, J.** *The Ebia Olewale Project*, Association for the Advancement of Pacific Studies conference, Melbourne, April 2010.

**Ritchie, J.** *Ebia Olewale and the Politics of Identity*, Australian Historical Association (AHA) conference in Perth, July 2010.

**Ritchie, J.** *Walking with Sir Ebia – The Ebia Olewale Biography Project*, Pacific History Association conference, Goroka, PNG, September 2010.



**Affiliated members**

**BASTIN, ROHAN**

BOOK CHAPTER

**Bastin, R.** Sri Lankan civil society and its fanatics in Kapferer, B., Telle, K. and Erikson, A. (Eds) *Contemporary Religiosities and the post-nation-state*, Berghahn Books, Oxford.

REFEREED JOURNAL ARTICLE

**Bastin, R.** The Australian War Memorial and Fabrications of History: A Cautionary Tale in *Nethra Review*, vol. 11, no. 2 (2010), pp.1–15.

INVITED ADDRESS

Presented paper at the Reconceptualizing Development conference, Centre for Citizenship, Development and Human Rights, Melbourne, 29 October 2010.

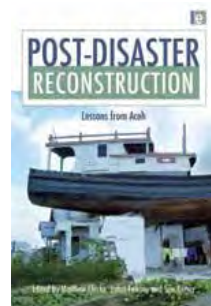
**CLARKE, MATTHEW**

BOOKS

Kenny, S. and **Clarke, M.** *Challenging capacity building: comparative perspectives rethinking international development*, Palgrave Macmillan, New York, N.Y., 2010.



Kenny, S., **Clarke, M.**, and Fanany, I. (Eds) *Post-disaster reconstruction: lessons from Aceh*, Earthscan, London, England, 2010.



BOOK CHAPTERS

Kenny, S. and **Clarke, M.**, Lessons from Aceh, in *Post-disaster reconstruction: lessons from Aceh*, Earthscan, London, England, 2010.

**Clarke, M.** and Murray, S. 2010, The voices of international NGO staff, in *Post-disaster reconstruction: lessons from Aceh*, Earthscan, London, England, 2010.

Kenny, S., **Clarke, M.**, Fanany, I. and Kingsbury, D., Deconstructing Aceh's reconstruction, in *Post-disaster reconstruction: lessons from Aceh*, Earthscan, London, England, 2010.

**CRUICKSHANK, JOANNA**

BOOK CHAPTER

**Cruickshank, J.** and Grimshaw, P. 'A Matter of No Small Importance to the Colony': Moravian Missionaries on Cape York Peninsula, Queensland, 1891-1919' in Brown-Mat, A. and Grimshaw, P. (Eds) *Missionaries, Indigenous People and Cultural Exchange*, Sussex Academic Press, Brighton, 2010.

REFEREED JOURNAL ARTICLES

**Cruickshank, J.** 'Race, History and the Australian Faith Missions' in *Itinerario* vol.34, no.3 (2010), pp. 39-52.

**Cruickshank, J.** 'Were Early Methodists Masochists? Suffering and Sanctification in the Hymns of Charles Wesley' *Bulletin of the John Rylands University Library* vol.88, no. 2 (2010), pp. 81-100.

GUEST EDITOR OF JOURNAL SPECIAL ISSUE

**Cruickshank, J.** (Ed) 'Missions and Modernity' Special Issue of *Itinerario* vol. 34, no.3 (2010)

CONFERENCE PAPERS

**Cruickshank, J.** *Race, History and the Australian Faith Missions*, Australian Historical Association Conference, Perth, WA, 7 July 2010 (in absentia).

**Cruickshank, J.** *Blood, Tears and Race: Moravian Missionaries and Indigenous Bodies in Colonial Australia*, American Society of Church History Annual Meeting, American Historical Association, San Diego, 9 January 2010.

INVITED ADDRESS

**Cruickshank, J.** *Matilda Ward*, Women and Leadership Symposium, University of Melbourne, 24 November 2010.

HONORARY APPOINTMENT

Appointed an Honorary Fellow of both the Manchester Wesley Research Centre and the Australasian Centre for Wesleyan Research.

COMMENTARY

*Pain, Passion and Faith*, The Spirit of Things, ABC Radio, 20 June 2010.

**ECKERMANN, ELIZABETH**

REFEREED JOURNALS

**Eckermann, E.** Embodiment and risk: Another string to Eberhard Wenzel's bow in *Health Promotion Journal of Australia*, vol. 21, no.3, (2010), pp.166-169.

Whitstock, M., Pearce, C., Ridout, S. and **Eckermann, E.** 'A retrospective analysis of VIOXX in Australia: using clinical trial data and linked administrative health data to predict patient groups at risk of an adverse drug event' Letter to the Editor in *Australian and New Zealand Journal of Public Health*, vol. 34, no.4 (2010) pp. 431-2.

MAJOR CONSULTANCY REPORTS

**Eckermann, E.** 'Women and Health in the Western Pacific Region: Remaining Challenges and New Opportunities' WHO, WPRO, (2010), pp 1-78.



#### KEYNOTE ADDRESS

**Eckermann, E.** *Eberhard Wenzel Oration*, Australian Health Promotion Association National Conference, Melbourne 1 June 2010.

#### JOHNSON, LOUISE

##### BOOK CHAPTER

**Johnson, L.C.** The Geelong cultural precinct: from a consumption to a production space, in S. Roodhouse, S. (Ed) *Cultural Quarters (2nd Edn)*, Intellect Books: Bristol, 2010.

##### REFEREED JOURNAL

**Johnson, L.C.** Master planned estates: parish or panacea? In *Urban policy and research*, vol. 28, no. 4, 2010, pp. 375-390.

##### CONFERENCE PRESENTATIONS

**Johnson, L.C.** and Oakley, S. *Watermarks: Re-making places in the liminal zones of Australia in the Contemporary Rural Landscapes II*, New Zealand Geographical Society Conference, with the Institute of Australian Geographers, Christchurch, 8 July 2010.

Prior, Y., **Johnson, L.C.** and van der Zwaard, R. *Project Australia: E-Learning through Digital Theatre*, Ubiquitous Learning Conference, Vancouver, 10 December 2010.

##### INVITED/KEYNOTE ADDRESSES

**Johnson, L.C.** *Creative Suburbs? How women, design and technology ensure that suburbs are always creative*, Queensland University of Technology Creative Suburbs Symposium, September 2010.

**Johnson, L.C.** *Feminist Geography Now Panel (Convenor)*, New Zealand Geographical Society Conference, with the Institute of Australian Geographers, Christchurch, 6 July 2010.

##### VISITING FELLOWSHIPS

Massey University, New Zealand, July 2010.  
Waikato University, New Zealand, July 2010.  
York University, Toronto, Canada, December 2010.

#### KING, TANYA

##### REFERRED JOURNAL ARTICLES

**King, T.J.** 'Damming the flow – Cultural barriers to perceived 'procedural justice' in Wonthaggi, Victoria' in *Cultural Studies Review*, vol. 16, no. 1, 2010, pp. 119-30.

##### INVITED ADDRESSES

**King, T.J.** *The Ganka of Bass Strait – Conservation efforts* – Human Ecology Seminar Series, Rutgers University, New Jersey, USA, 8 December 2010.

**King, T.J.** *Shark boat skippers and 'gun deckies' - motion binds them on the ocean*, Geelong Philosophy Society Paideia, Philosophy Café, Geelong, 24 February 2010.

**King, T.J.** *The devil in the detail of "marine stewardship"* Geelong Philosophy Society Paideia – Annual Philosophy Weekend, Geelong, 23 January 2010.

#### KINGSBURY, DAMIEN

##### BOOK CHAPTERS

Kenny, S., Clarke, M., Fanany, I. and **Kingsbury, D.** 2010, Deconstructing Aceh's reconstruction, in *Post-disaster reconstruction: lessons from Aceh*, Earthscan, London, England, 2010.

**Kingsbury, D.** Political reconstruction in Aceh, in Clarke, M., Fanany, I. and Kenny, S. (Eds) *Post-disaster reconstruction: lessons from Aceh*, Earthscan, London.

**Kingsbury, D.** The Aceh peace process, in Graf, A., Schroter, S. and Wieringa, E. (Eds), *Aceh: history, politics and culture*, Institute of Southeast Asian Studies, Singapore.

##### REFEREED JOURNALS

**Kingsbury, D.** National identity in Timor-Leste: challenges and opportunities in *East Asia Research*, vol.18, no.1, pp.133-159.

**Kingsbury, D.** Policing, rule of law, state capacity and sustainable peace in Timor-Leste in *Journal of international peacekeeping*, vol. 14, no. 3, pp. 353-374.

#### O'TOOLE, KEVIN

##### REFEREED JOURNALS

Graymore, M., Wallis, A. and **O'Toole, K.** Understanding drivers and barriers: the key to water use behaviour change in *Water Science and Technology – Water Supply*, vol 10, no 5, 2010, pp. 679-688.

**O'Toole, K.** Commentary: A scheme to support the recruitment and retention of allied health professionals to hard to fill posts in rural areas in *International Journal of Therapy and Rehabilitation*, vol. 17, no. 10, October 2010.

**O'Toole, K.** and Keneley, M. Forgotten outcomes for rural areas in central policy making: the case of blue gums in Australia in *Australian Journal of Public Administration*, vol. 69, no. 2, 2010, pp. 190-201.

**O'Toole, K.** and Schoo, A. Retention policies for allied health professionals in rural areas: A survey of private practitioners in *International Electronic Journal of Rural and Remote Health*, vol. 10, 3 May 2010, pp. 1-12.

**O'Toole, K.**, Schoo, A. and Hernan, A. Why did they leave and what can they tell us? Allied health professionals leaving rural settings in *Australian Health Review*, vol. 34, 2010, pp. 66-72.



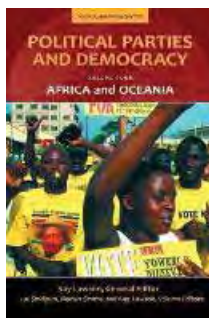
**O'Toole, K.**, Dennis J., Kilpatrick, S. and Farmer, J. 2010, From passive welfare to community governance: Youth NGOs in Australia and Scotland in *Children and Youth Services Review* vol. 32, 2010, pp. 430-436.

Stocker, L., Pokrant, B., Wood, D., Harvey, N., Haward, M., **O'Toole, K.** and Smith, T., Australian Universities, Government Research and the Application of Climate Change Knowledge in Australian Coastal Zone Management in Leal Filho, W. (Ed) *Universities and Climate Change*, Springer, Berlin, 2010.

**SIMMS, MARIAN**

EDITED BOOK

Lawson, K., Sindjoun, L. and **Simms, M.** (Eds) *Political parties and democracy*, Praeger, Santa Barbara, California, 2010.



BOOK CHAPTER

**Simms, M.** Australian political parties and democracy: a strange case of liberal modernity in Lawson, K. and Lanzaro, J. (Eds.) *Political parties and democracy*, Praeger, Santa Barbara, California, 2010.

REFEREED JOURNAL ARTICLES

**Simms, M.** The leaders and the press in *Australian cultural history*, vol. 28, no. 1, pp. 23-30.

**Simms, M** Preface in *Australian cultural history*, vol. 28, no. 1, pp. 1-4.

**WATERS, CHRISTOPHER**

BOOK CHAPTER

**Waters, C.** Lost opportunity: Australia and the Bandung conference in Finnane, A. and McDougall, D. (Eds), *Bandung 1955: little histories*, Monash University Press, Caulfield, 2010.

REFEREED JOURNAL ARTICLES

**Waters, C.** Understanding and Misunderstanding Nazi Germany: Four Australian visitors to Germany in 1938 in *Australian Historical Studies*, vol. 41, no 3 (2010), pp. 369-84.

**Waters, C.** The Menzies Government and the Grand Alliance during 1939 in *Australian Journal of Politics and History*, vol. 56, no. 4 (2010), pp. 560-73.

INVITED ADDRESSES

**Waters, C.** *Australian Ministers and Officials: Misunderstanding the Decolonisation of the South Pacific in the 1960s*, Australian Association for the Advancement of Pacific Studies Conference, Victoria University, Melbourne, 9 April 2010.

**ZIINO, BART**

BOOK CHAPTER

**Ziino, B.** In Memoriam - the ANZAC Heroes - ANZAC Day, grief, and World War One, in Hede A-M., Rentschler, R. (Eds), *Reflections on Anzac Day: from one millennium to the next*, Heidelberg Press, Heidelberg, 2010.

REFEREED JOURNAL ARTICLES

**Ziino, B.** "A Lasting Gift to His Descendants": Family Memory and the Great War in Australia in , *History and Memory*, vol. 22, no. 2, (2010), pp. 125-146.

**Ziino, B.** Enlistment and non-enlistment in wartime Australia: responses to the 1916 Call to Arms appeal in *Australian Historical Studies*, vol. 41, no.2, (2010) pp. 217-232.

INVITED ADDRESSES

**Ziino, B.** *Australians and the First World War*, History Teachers' Association of Victoria Annual Conference, 22 and 23 July 2010.



Alfred Deakin Research Institute  
Deakin University  
Geelong Waterfront Campus  
1 Gheringhap St Geelong  
Victoria Australia 3220  
Tel: +61 3 5227 1464  
Fax: +61 3 5227 8650

Deakin University CRICOS Provider Code 00113B

discovery  
excellence  
application



*Handwritten text:* ... Ltd 318 GEORGE ST