



Geelong Campus at Waurn Ponds

Pigdons Road
Geelong Victoria
Australia 3217
Telephone 03 5244 6274
Facsimile 03 5244 6755

Geelong Waterfront Campus

1 Gheringhap Street
Geelong Victoria
Australia 3217
Telephone 03 5244 6274
Facsimile 03 5244 6755


Melbourne Campus at Burwood

221 Burwood Highway
Burwood Victoria
Australia 3125
Telephone 03 9244 6274
Facsimile 03 9244 6755

Warrnambool Campus

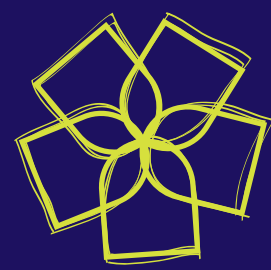
Sherwood Park
Princes Highway
Warrnambool Victoria
Australia 3280
Telephone 03 9244 6274
Facsimile 03 9244 6755

www.deakin.edu.au



Life at Deakin

Arrival Guide for International Students



Deakin University CRICOS Provider Code: 00113B



DEAKIN
UNIVERSITY AUSTRALIA

Contents

Welcome to the Deakin community	2
Welcome from the International Student Support team	
How to contact an International Student Adviser	3
Division of Student Life	4
Orientation program	
What to bring to your enrolment session?	6
Credit for prior learning	6
Important	
Student visa requirements	7
Identity theft	8
Living in Victoria	
Melbourne	9
Geelong	9
Warnambool	9
What is the weather like in Victoria?	10
I need help with...	
Child care	11
Financial matters	11
Finding accommodation	12
Finding a job	14
Finding a place to pray	15
Health and well-being	16
Legal advice	17
Locating food on campus	18
Phone and internet access	19
Public transport	20
Study skills	21
There is more...	22
Join the Peer Support Program	23

Welcome to the Deakin community

We aim to create a unique Deakin student experience that helps you maximise your learning and provide you with skills and attributes that will equip you for your future careers, lifelong learning and in making positive contributions to your community.

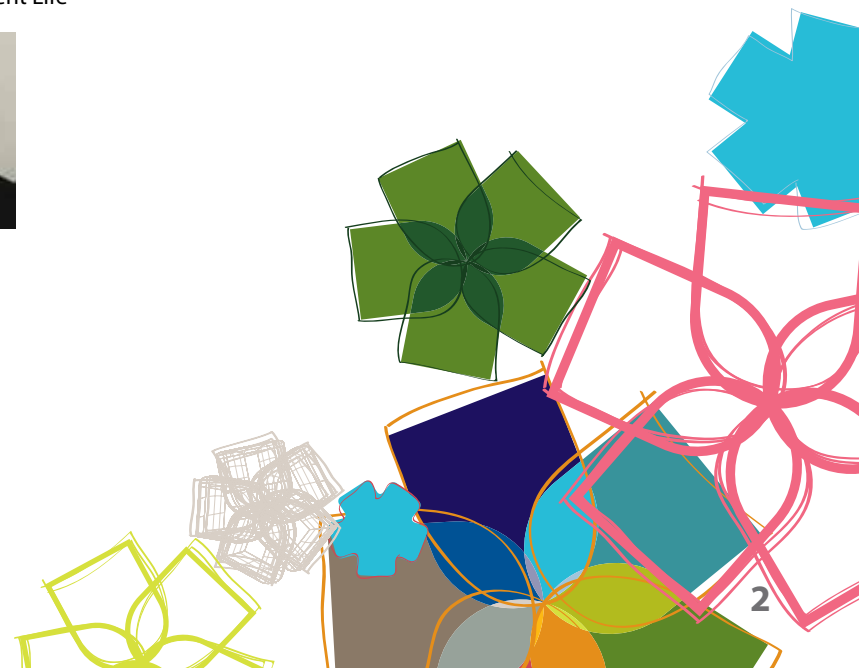
Your learning at Deakin is enhanced by a connected community of teachers and learners, flexibility that recognises the diverse learning needs of individual students and a culture of research and scholarship. Please take some time to read the Deakin University Student Charter. This important document describes what you can expect and what is expected of you as a member of the University community. The Charter can be found at www.deakin.edu.au/current-students/study-support/student-charter.

Student services are an essential part of your learning at Deakin. We urge you to take advantage of everything Deakin has to offer to maximise your potential and excel in your learning and research.

Life at Deakin: Arrival Guide for International Students has been compiled to assist you and we hope that you will find it a useful reference tool, especially in conjunction with the A-Z Guide.

We wish you the very best of luck with your studies.

John Devereaux
Director
Division of Student Life



Welcome from the International Student Support team

You are about to embark on an exciting journey, filled with lots of new impressions and opportunities to meet new friends, all in a fast-paced and challenging academic climate.

Along the way, you will find yourself having to adapt to another culture, unfamiliar surroundings, different academic expectations, and much more. But don't let any of that be more of a concern to you than it needs to be. Your International Student Support team is here to help you, with both the challenges and the opportunities!

As International Student Advisers, we are uniquely placed to provide assistance and advice on a wide range of issues, such as social or adjustment difficulties, feelings of homesickness and isolation, academic problems, visa-related issues, financial struggles, connections with the wider community, and a whole range of other things.

We are here to help you to achieve your goals whilst studying at Deakin. By providing advice to you personally, or referring you to specialised units, both within Deakin or in the wider community, we hope to contribute to your success at Deakin and beyond.

So don't hesitate to come and see one of us to discuss your needs. We look forward to working with you to make the most of your time here at Deakin!

www.deakin.edu.au/international/student

How to contact an International Student Adviser

Melbourne Campus at Burwood

International Student Advisers:

Clare Baldwin

Joshua Beggs

Isabelle Droulers

Jessica van Dyk

Telephone: 03 9244 6689

Email: enqint-melb@deakin.edu.au

Warrnambool Campus

International Student Adviser:

Marita Hewson

Telephone: 03 5563 3486

Email: marita.hewson@deakin.edu.au

Geelong Campus at Waurn Ponds

International Student Adviser:

Helen Nicholls-Stary

Telephone: 03 5227 1261

Email: helen.nicholls-stary@deakin.edu.au

Geelong Waterfront Campus

International Student Adviser:

Laurynda Giles

Telephone: 03 5227 8119

Email: laurynda.giles@deakin.edu.au

Division of Student Life

The International Student Support team is part of the Division of Student Life. The Division of Student Life aims to enrich the learning experience and life opportunities of all Deakin University students through the provision of a range of high quality student centred services. Student Life staff know what you need to be successful at Deakin University and have tailored services to help you achieve this. Services include:

- accommodation on campus and off campus
- career planning
- childcare
- counselling
- Deakin Card
- financial assistance (loans, grants, food vouchers)
- fitness clubs and sports stadiums
- international student support
- Jobshop (for job opportunities while studying and beyond)
- medical centres (on-campus doctors and nurses)
- multi-faith chaplaincy
- language and learning support
- transition (helping students adjust to university life).

Melbourne Campus at Burwood

Telephone: 03 9244 6300

Building b, Level 2

Geelong Campus at Waurn Ponds

Telephone: 03 5227 1221

Building jb, Level 2

Geelong Campus at Waterfront

Telephone: 03 5227 8400

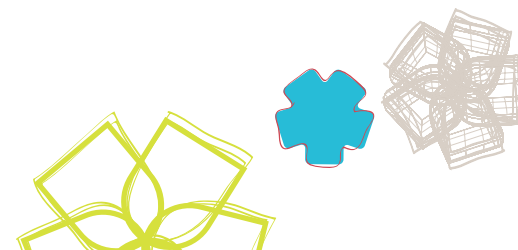
Level 2

Warrnambool Campus

Telephone: 03 5563 3256

Building B, Lower Level

www.deakin.edu.au/studentlife



Orientation program

Making the move into university can be an exciting and challenging journey, but you should always remember that there are many people and programs at Deakin to help you to make a successful start to your studies.

Deakin's Orientation program is designed specifically for new students and is absolutely essential if you want to make a great start to uni life. Orientation is packed with activities that will enable you to meet other students and staff, become familiar with the campus and services available, and learn more about your course. And there's lots of fun to be had too.

You will have received a course itinerary in your Orientation pack, which outlines all the activities you need to attend during Orientation. Make sure you bring this with you to Orientation, so that you know where you need to be and when.

Orientation starts with the Host Program where your student Host will introduce you to other students from your Faculty and give you some time to get to know each other. You'll then go on a tour of the campus so that you can quickly get to know where your lectures will be, where to go for help, and where to grab a good coffee.

During Orientation you're also expected to attend your Faculty and School welcome and information sessions. These sessions are extremely important because they will help you to understand more about what you can expect from your course, and what will be expected of you as a Deakin student.

There are also lots of opportunities for you to relax and have fun during Orientation. There are bands, free lunches, markets, comedy and movie nights, competitions and a huge range of clubs and societies to get involved in. And who knows – you may even make some lifelong friends.

Orientation: Kickstart your life at Deakin!

Check out the Getting Started site for more information:
www.deakin.edu.au/transition

What to bring to your enrolment session

Your itinerary includes the day and time for your enrolment. Please bring the following documents to your academic enrolment session:

- Letter of Offer
- e-COE
- Original transcript of previous studies and any other relevant academic documents

Credit for prior learning (Exemptions/Credit transfer)

If you have completed studies at another institution, you may be eligible for credit towards your course at Deakin University.

All students who are applying for credit for prior learning will have their credits finalised at the time of enrolment. You will need to bring your letter of offer, detailing any credits that you have previously been advised of, and your original documentation – transcripts of results, certificates etc. If no mention is made of credit on your offer letter, you must provide both original transcripts of results and / or certificates, as well as unit/syllabus outlines detailing the content of each subject previously studied.



Important



Student visa requirements

All international students holding a student visa must comply with the conditions of that visa. Failure to do so may have serious consequences, including cancellation of the student visa.

These are the important points you must remember:

- **Change of address:** Condition 8533 of your student visa requires that you notify the University of any change of address within seven (7) days of the change. Please make sure you update your most current contact details (including both address and phone number) via student connect (www.deakin.edu.au/studentconnect) within 7 days of any changes.
- **Condition 8202 of your student visa** requires you to maintain both satisfactory academic progress and satisfactory attendance. Failure to do so may result in cancellation of your student visa and a mandatory exclusion period from Australia.

You need to advise Deakin about your intention to do any of these. Please see an ISA for advice and assistance.

- **Overseas Student Health Cover:** you need to have valid Overseas Student Health Cover while studying. The Australian government requires all international students (and any dependents accompanying them) to have Overseas Student Health Cover (OSHC). The health cover provides for medical and hospital care within Australia from the date of the student's arrival until the end of his/her studies in Australia. Deakin University will arrange a program length OSHC cover for students who are arriving from overseas to study in Australia for the first time. Deakin's preferred provider for OSHC is BUPA Australia. OSHC fees are set out in your Letter of Offer and are payable together with your tuition fees.

It is important you have continuous health insurance coverage. If you allow your membership to lapse, you will not be eligible for reimbursement of any medical costs incurred during the lapsed period.

You will also be in breach of your student visa. For the most up-to-date information on Overseas Student Health Cover, go to www.overseasstudenthealth.com and www.deakin.edu.au/future-students/international/oshc.

- **Work limitations:** while there is no limit to the number of hours you can work on University holidays, you cannot work more than 20 hours per week while your course is in session. Even if you are enrolled in only one unit in a trimester, you are limited to 20 hours of work per week.
- **Change of institution:** Under the ESOS (Education Services for Overseas Students) National Code 2007, restrictions apply to students who wish to change institutions within the first six months of their principal course (a release letter is required if less than 6 months has been studied at the principal provider). Eligibility and release letter application details can be found at: www.deakin.edu.au/future-students/international/coming-aus/request-transfer

For all student visa conditions, please refer to: www.immi.gov.au/students/visa-conditions-students.htm

Renewing your visa: see the current international on-campus students' website for details on how to apply for your visa extension: www.deakin.edu.au/current-students/international/services-support/visa-immigration/visa-renewal

Useful links

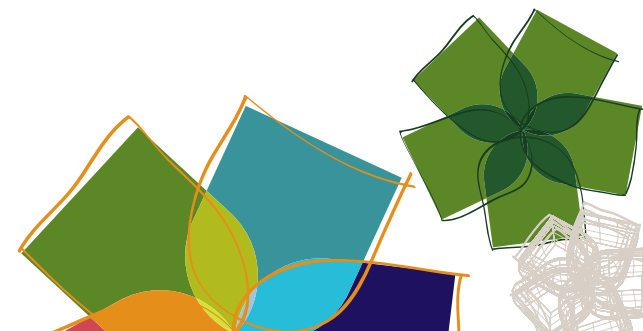
Department of Immigration and Citizenship (DIAC)
www.immi.gov.au/

HSA Group (for medical test)
www.medibankhealth.com.au/government

Visa and immigration, Deakin University
www.deakin.edu.au/current-students/international/living/visa-immigration/index.php

Identity theft

The Australian Government wishes to advise international students to be aware of identity theft. Identity theft happens when another person steals your identity to commit crimes. For further information on this matter, please refer to the ATO website at: www.ato.gov.au/individuals/content.asp?doc=/content/00092180.htm





Living in Victoria

Although Victoria is the smallest of Australia's mainland states, it has much to offer. A wide variety of landscapes and natural habitats cover Victoria – from ocean beaches and mountain ranges, to deserts and forests, volcanic plains and never-ending sheep farms. Victoria's population is also the most diverse in Australia - Victorians come from more than 200 countries and speak more than 230 different languages.

Melbourne

Greater Melbourne has a population of 3.9 million people. It is exciting, relatively safe, cosmopolitan and culturally rich. Melbourne is renowned for its music and cultural festivals, quality restaurants, entertainment venues, beautiful parks and gardens and its excellent shopping. It boasts world-class sporting and recreational facilities, including tennis, golf, cricket, yachting, football and motor racing. Melbourne has been voted 'the world's most liveable city' twice in the past four years, following surveys conducted by a United States research group, because of its clean and safe environment, cost of living and quality of housing and education.

Geelong

Geelong is Victoria's second largest city and the population of the City of Greater Geelong is approximately 216,000 people. It is situated on the beautiful Corio Bay and Barwon River and is less than an hour from the center of Melbourne. It is the gateway to the famous Great Ocean Road and some of the best surf beaches in the world. Geelong offers a cosmopolitan way of life. It has all the modern amenities of larger cities including excellent cafes, restaurants, shopping and recreational facilities, and offers a clean, healthy and relaxed environment in which to live.

Warrnambool

Situated at the end of the stunning Great Ocean Road, Warrnambool is a regional city, three hours from Melbourne by car or train. It is the commercial, cultural and educational centre for southwest Victoria. This premier tourist location is surrounded by beautiful coastlines and surf beaches, and has a long and fascinating history. In the summer months, the resident population of 30,000 doubles, with holiday makers enjoying miles of beaches for swimming, surfing, fishing, windsurfing, boating, diving, and many other activities. Galleries, lighthouses, restaurants and cafes are some of the city's attractions, but it remains the close-knit atmosphere of a smaller Australian city. Many students choose Warrnambool because of its smaller size which offers a more personal teaching environment.

Useful links

Study Melbourne

www.studymelbourne.com.au

Study in Australia

<http://studyinaustralia.gov.au/Sia/en/Home.htm>

Visit Victoria

The Visit Victoria site provides comprehensive information about the regions of Victoria, holiday accommodation, events and attractions, shopping destinations and much more. www.visitvictoria.com

What is the weather like in Victoria?

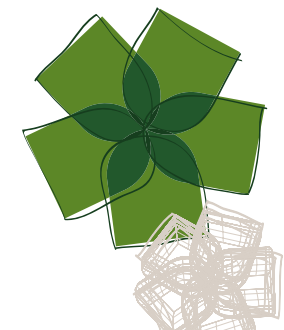
The weather in Victoria is temperate and mild with four distinct seasons (sometimes these can be experienced all in the same day!). Students will need to have a range of clothing to cater for the seasonal climatic conditions.

Season	Daytime temperature range
Summer December, January, February	25° – 35° Mostly warm, with occasional very hot days
Autumn March, April, May	18° – 24° Most days are pleasantly mild
Winter June, July, August	6° – 14° Most days are cool
Spring September, October, November	15° – 22° Most days are pleasantly mild

Useful Links

Bureau of Meteorology

www.bom.gov.au/





I need help with ...

Child care

On-campus child care is available on the Melbourne Campus at Burwood, Geelong Campus at Waurm Ponds and Warrnambool Campus. Qualified, experienced and caring staff provide high quality care for under school age children. More information about on-campus childcare can be found at: www.deakin.edu.au/studentlife/childcare

Other child care options can be found with local councils and privately run organisations. It is important to know that international students are not usually eligible for the subsidies available to Australian citizens. Contact the International Student Adviser on your campus for further information.

Useful links

Child Care Centres Association of Victoria Inc.
www.cccav.org.au/index.html

National Childcare Accreditation Council Inc
www.ncac.gov.au/

Financial matters

Opening a bank account

There are many banks, credit unions and other financial institutions in Australia. Banks have a range of accounts and it is up to you to find out what type of account is most suitable for you. Most banks either waive account fees for students or allow you to open an account at low cost, so make sure you enquire about the options for students. To open a bank account, you are usually required to bring your passport, student ID and your current address.

The following link has information regarding banking in Australia and how it might be different from your home country:
www.bankers.asn.au/smarter-banking/default.html

Financial assistance

Deakin University offers a range of interest-free student loans, student grants, emergency food and transport vouchers for students in financial need, as well as money management advice for daily budgeting. The Financial Assistance service can also refer you to other financial support agencies outside the University. For further information, please contact the Division of Student Life.

www.deakin.edu.au/financial-assistance

Finding accommodation

Short-term (temporary) accommodation

Short-term or temporary accommodation can be arranged before you arrive in Australia, at your own cost, through a Notification of Arrival form. Should you need temporary accommodation at other times, you need to contact the International Student Adviser on your campus. Single person short-term accommodation varies from approximately AU\$30–35 per night in Geelong and Warrnambool to AU\$35–110 per night in Melbourne. Motel-style accommodation may be considerably more expensive.

Please note that some accommodation providers may require you to stay a minimum of two nights.

Accommodation on campus

On-campus student housing is available at the Melbourne Campus at Burwood, the Geelong Campus at Waurm Ponds and the Warrnambool Campus. Residences are designed to meet the needs of students who move away from home to study by offering a secure and supportive living and learning environment, assisting you in your transition to university life.

Melbourne Campus at Burwood
Telephone: 03 9251 7671

Geelong Campus at Waurm Ponds
Telephone: 03 5227 1158

Warrnambool Campus
Telephone: 03 5563 3256

www.deakin.edu.au/studentlife/residences

Accommodation off campus

Assistance in finding off-campus accommodation is provided through the Deakin University Division of Student Life's off-campus housing service on all campuses. Please note, the Off-Campus Housing Officers do not facilitate homestay arrangements.

The Off-Campus Housing Officers assist new students with:

- access to an online database of local properties available to international students
- making contact with local real estate agents and landlords
- inspection of available properties
- details of vacant properties, private board and shared housing
- advice with regard to lease agreements, tenancy issues, bond and rental payment advice
- advice regarding the connection, where necessary, of utilities such as gas, electricity and telephone
- general support and advice in regards to accommodation.



Renting a property – house, flat or apartment

Vacant properties usually vary from one to four bedrooms. The majority of vacant flats, houses and apartments are unfurnished. Renting a vacant property is upon application and must be made in person (identification, proof of income and rental references are required). Rental prices vary according to location, condition of building and number of bedrooms.

Renting a room in a house, flat or apartment

Renting a room in an established household and sharing the cooking, bathroom and laundry facilities can be the cheapest option. Rooms to rent are offered by other students, families with or without children, and working people in the community. A room in a house, flat and apartment may be furnished or unfurnished and utility costs may or may not be included in the rent.

All students are strongly advised to consult with the Off-Campus Housing Officer before signing a lease. It is important to know your rights as a tenant and to be aware of the legal aspects of bonds and leases.

Melbourne Campus at Burwood

Telephone: 03 9244 6031

Email: housing-melbourne@deakin.edu.au

Geelong Campus at Wairn Ponds and Waterfront

Telephone: 03 5227 2249

Email: housing-geelong@deakin.edu.au

Warrnambool Campus

Telephone: 03 5563 3256

Email: housing-warrnambool@deakin.edu.au

www.deakin.edu.au/studentlife/accommodation/offcampus

Useful links

Realestate.com.au

www.realestate.com.au

Domain.com.au

www.domain.com.au

Consumer Affairs Victoria

www.consumer.vic.gov.au/

Tenants Union of Victoria

www.tuv.org.au/



Finding a job

When you are new to Australia, finding a job can be a real challenge. Careers & Employment in the Division of Student Life helps you build your skills and improve your chances of finding employment.

www.deakin.edu.au/current-students/services/careers

Jobshop

Jobshop is Deakin University's link between students and employers. Jobshop offers:

- job listings – full time, part time, casual, graduate, internship, volunteer, tutoring
- events listings, news, information sheets, announcements

www.deakin.edu.au/jobshop/

Melbourne Campus at Burwood

Careers and Employment Resource Centre, Building B, Level 2

Geelong Campus at Wairn Ponds

Student Life, Administration Building, Level B

Geelong Waterfront Campus

Student Life, Level 2

Warrnambool Campus

Student Life, Level 2, Building B

Useful Links

Seek

www.seek.com.au

Career One

www.careerone.com.au

International Student Work Rights

www.aei.gov.au/AEI/Workrights_for_international_students.htm

Fair Work Ombudsman

www.fwo.gov.au

Tax File Number

If you do not want to pay more tax than required once you have a job, you need a Tax File Number (TFN), issued by the Australian Taxation Office (ATO). There is no charge to obtain a TFN. Below is information on how you can apply for a TFN.



Step 1 : Go to the Australian Taxation Office (ATO) website: www.ato.gov.au
Step 2 : Select *Individuals* => *Get a tax file number* => *Students* => *Apply for your tax file number online*, follow the prompts to complete your application.

Generally, you are required to complete a “tax return” at the end of each financial year if you are an Australian resident for tax purposes for the full financial year (1 July – June 30) and earned in excess of AU\$6,000 for the period. International students enrolled at Deakin University for more than six months are generally considered to be Australian residents for tax purposes.

www.ato.gov.au

Finding a place to pray

Deakin University Chaplains can help you find a place of worship - a mosque, temple or church - to suit your particular religious beliefs.

Chaplains can provide a focus for the campus community's spiritual life, helping nurture people's faith –no matter what faith they practice – and being available to those seeking meaning and purpose in their lives. Places of worship on/near each of the Deakin campuses are listed at the following website: www.deakin.edu.au/studentlife/chaplains/

Health and well-being

Deakin Medical Centre

Not feeling well? Do you have any health concerns?

Deakin Medical Centre staff are caring professionals with experience in the health needs and cultural diversity of all students. Campus doctors direct bill via OSHC with no extra payment required by students. Campus nurse consultations are free. All services to students are strictly confidential.

Services include:

- vaccinations (e.g. flu, hepatitis)
- tests and screenings (blood pressure, medicals and blood testing)
- referrals (to specialist doctors, hospitals, physiotherapists)
- diet and exercise advice
- mental wellbeing (e.g. homesickness, feeling sad/anxious)
- treatment when sick.

Bring your student ID and your OSHC card to the Division of Student Life reception to make an appointment to see a doctor or nurse.

www.deakin.edu.au/current-students/services/health/

Counselling and personal development

Counsellors provide professional, confidential and free counselling for students. Counselling can help you develop your problem-solving abilities, manage stress and personal crises, and resolve issues. The counselling team is focused on helping you maximise your academic potential through the provision of resources, web-based services and one-on-one personal counselling.

www.deakin.edu.au/current-students/services/counselling

Disability Resource Centre

Deakin University is strongly committed to the principles of social justice and fairness in education and provides a range of services tailored to individual student needs. If you have a health condition or a disability, the Disability Resource Centre (DRC) can help you to adjust to university life and improve your chances of success.

DRC services include:

- academic support workers, such as note-takers and sign interpreters
- accessible course materials – see also 'Information Access'
- alternative assessment arrangements, such as extra writing time and/or rest breaks in exams
- assistance with assistive technology and training
- information about access parking, extended library services, scholarships.

Please contact the DRC to make an appointment to speak with a disability liaison officer.

www.deakin.edu.au/disability



Legal advice

Victoria Legal Aid

Should you find yourself in a position where you need legal advice or help, further information can be obtained from Victoria Legal Aid (VLA). VLA provides limited legal information for international students, advice and assistance in relation to criminal issues, family breakdown, family violence, immigration, social security, mental health, debt and traffic offences. For contact details, please refer to the table below.

Melbourne	Geelong	Warrnambool
350 Queen St Melbourne VIC 3001 Telephone: 03 9269 0234	Level 2, 199 Moorabool St Geelong VIC 3220 Telephone: 03 5226 5666 Toll free: 1800 196 200	185 Fairy St Warrnambool VIC 3280 Telephone: 03 5559 7222 Toll free: 1800 651 022

www.legalaid.vic.gov.au

International Student Legal Advice Clinic (ISLAC)

The Western Suburbs Legal Service offers free legal advice for international students every Wednesday, from 6 pm to 8 pm, through a drop-in service at their Newport office.

For further information please refer to:

www.hobsonsbay.vic.gov.au/Page/Page.asp?Page_id=4744



Locating food on campus

Deakin provides a range of food options for students and staff including cafés, restaurants, bars, vending machines and function catering services. Offerings vary from campus to campus.

Melbourne Campus at Burwood	Geelong Campus at Warrn Ponds	Waterfront Campus Geelong	Warrnambool Campus
Cafe Ava (halal food) Caffeine Internet Cafe Einstein's Bar -Bistro Corner Cafe (halal food) Sushi Bar Main Cafe (halal food) Cafe Plateau General Store	Eats Bistro Encompass general store The Lakehouse Main Cafe (halal food)	Main Cafe (halal food)	Main Cafe (halal food)

You can use your Deakin Card, once you have loaded it with money, to pay at a variety of places on campus, including a number of food outlets. Simply hand over your Deakin Card at any outlet displaying the "Deakin Card accepted here" sign.

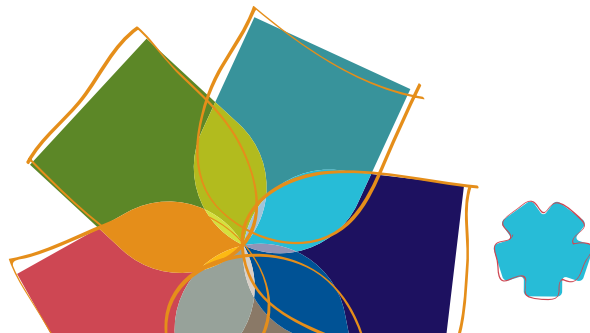
www.deakin.edu.au/current-students/services/foods-services



Phone and internet access

A range of options are available for your communication needs. It is important that you inform yourself about the options and carefully weigh up what suits you best. The table below gives you an overview.

Public phones on campus	Burwood: Building H Geelong : - Union Building near cafeteria (Waurm Ponds) - Located near cafeteria (Waterfront) Warrnambool : - Near the bus stop (Cafeteria Lane) - In the Cafeteria (Foyer) - Bruce Morris Terraces (Residences) - The Mansions (Residences)
Home phone	To install a home phone line, normally you will have to pay for a once off connection fee, a monthly line rental fee plus monthly usage fee according to your usage. Various packages from different companies may include a home phone line with broadband connection for internet, or a home phone line with cheaper local or international calls.
Mobile phones	Post-paid (set within a certain contract period, ie, normally 24 months) and pre-paid options are available. You need to find out what call rates apply and what various providers offer.
Phone cards	You can make cheaper overseas calls using phone cards. Phone cards can be used on home phone, mobile phone and public phone. There are different cards with different rates, depending on which country you are calling to. Phone cards can be purchased in most convenience stores.
Personal internet	If you want to get internet access in addition to your internet access through Deakin University, you can apply for either post-paid and pre-paid (similar to a phone plan with broadband connection) with various price options. Check out what various providers offer.



Public transport

Victoria's public transport system includes trains, trams, and buses. Travel fares vary according to distance travelled. Different types of tickets are used. The most comprehensive information about traveling on public transport around Victoria and within Melbourne, Geelong and Warrnambool can be found at MetLink: www.metlinkmelbourne.com.au/

Please note, hefty fines apply if you do not have a valid ticket. For further information on what to expect when caught traveling without a valid ticket, please refer to: www.metlinkmelbourne.com.au/using-public-transport/authorised-officers/travelling-without-a-valid-ticket/

Myki is the new payment method for public transport which will soon replace Metcards. It has been implemented in Geelong and Warrnambool already and is slowly being introduced to Melbourne also. To stay updated regarding the new payment method, please check www.myki.com.au regularly.

Melbourne

Melbourne's public transport area covers two zones and the fares vary according to the respective zones. Deakin University is located in both Zone 1 and 2 and has a number of tram and bus stops around.

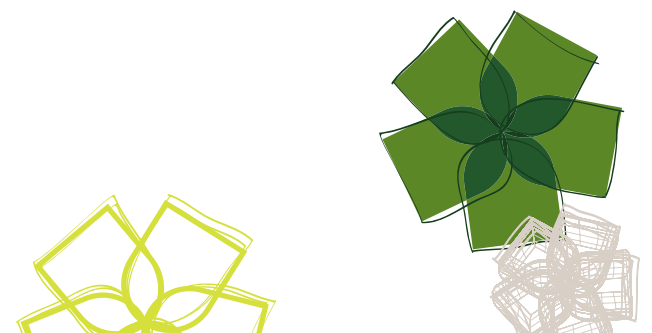
TravelSmart is a joint initiative by the Department of Transport and Deakin University and it aims to improve public transport services, walking and cycling facilities for students and staff alike on the Melbourne Campus at Burwood. For more information, visit the TravelSmart web site at www.deakin.edu.au/travelsmart

Geelong

You can get bus and train timetables for Geelong from the campus ISA. V-line operates train services from Melbourne to Geelong and back.

Warrnambool

There are hourly buses during weekdays to and from Warrnambool and Deakin University Campus and limited bus services in the evenings and on weekends. Three trains run to and from Melbourne every day with two each way stopping at Warrnambool Campus (Sherwood Park Station). V-line operates train services from Melbourne to Warrnambool and back via Geelong.



Useful Links

Metlink – Your guide to public transport in Melbourne and Victoria

www.metlinkmelbourne.com.au/

V-line

www.vline.com.au

Public Transport Safety Victoria

www.ptsv.vic.gov.au/

Study skills

Studying in Australia can be challenging and different from your home country. Study skills support at Deakin University is free. You can:

- meet with a Language and Learning Adviser to find out how you can succeed at Deakin
- come to a free workshop to meet people and learn how to write your assignments, manage your time, prepare for your exams, or read efficiently
- join an online workshop using eLive.

www.deakin.edu.au/study-success

There is more ...

All students should have received a copy of the A-Z Guide in their Orientation pack. It will give you helpful information and is to be used in conjunction with the Arrival Guide. Together these publications should assist you to succeed in your studies and enjoy university life.

Below are some of topics covered in the A-Z Guide.

Enrolment related		
COURSE ADVISERS	RE-ENROLMENT	RESULTS RELEASE
CREDIT FOR PRIOR LEARNING	CASHIER	DISCONTINUATION OF COURSE
ENCUMBRANCES	EXCLUSION	FEES AND CHARGES
HANDBOOKS	INTERMISSION	INVOICE
SPECIAL CONSIDERATION	TERMINATION	TRANSCRIPTS
WITHDRAWING FROM STUDY	WITHDRAWING/ADDING UNITS	
Study related		
COURSE GUIDES	LIBRARY	PLAGIARISM
DEAKIN STUDIES ONLINE (DSO)	ONLINE STUDY	SPECIAL OR SUPPLEMENTARY ASSESSMENT
EXAMINATIONS	PLAGIARISM	STAR (STUDENT TIMETABLE ALLOCATION AND REGISTRATION)
IT services		
COMPUTER LABORATORIES	INTERNET ACCESS	PRINTING AND PHOTOCOPYING
DEAKIN EMAIL	IT SECURITY	STUDENTCONNECT
DEAKIN PORTAL	PASSWORDS AND USERNAMES	WIRELESS ACCESS ON CAMPUS
Others		
DEAKIN CARD	NURSE-ON-CALL	REFERENCING
IMMUNISATION	PARENTS' ROOM	SAFETY ON-CAMPUS/ SECURITY
LOST PROPERTY	PARKING	SICKBAY
MOTORCYCLE PARKING	POLICIES AND PROCEDURES	STUDENT CHARTER



Join ISS-Connect

Your ISS-Connect volunteers are a group of current Deakin students who offer support and assistance to newly arrived international students. They are ready to help you with your first needs, offer you the tools you will need to become independent in your new life in Australia and to make the most out of your stay at your particular Deakin University campus and in your studies.

Would you like to:

- » make new friends at Deakin?
- » get help to open an Australian bank account? (Please bring your passport)
- » get useful information about using public transport around your campus and in your local area? (Please bring money, preferably coins, for your public transport ticket)
- » get information about accommodation options?
- » understand the shopping options around your campus?
- » meet other Deakin students and make friends over lunch on or near your campus?

We urge you to make contact with your ISS-Connect volunteers as soon as possible so that you quickly become familiar with the University and a part of the student community at Deakin.

Be sure to check the dates of our ISS-Connect Welcome programs at each campus on our website at:

www.deakin.edu.au/current-students/international/living/airport/iss-connect.php

